



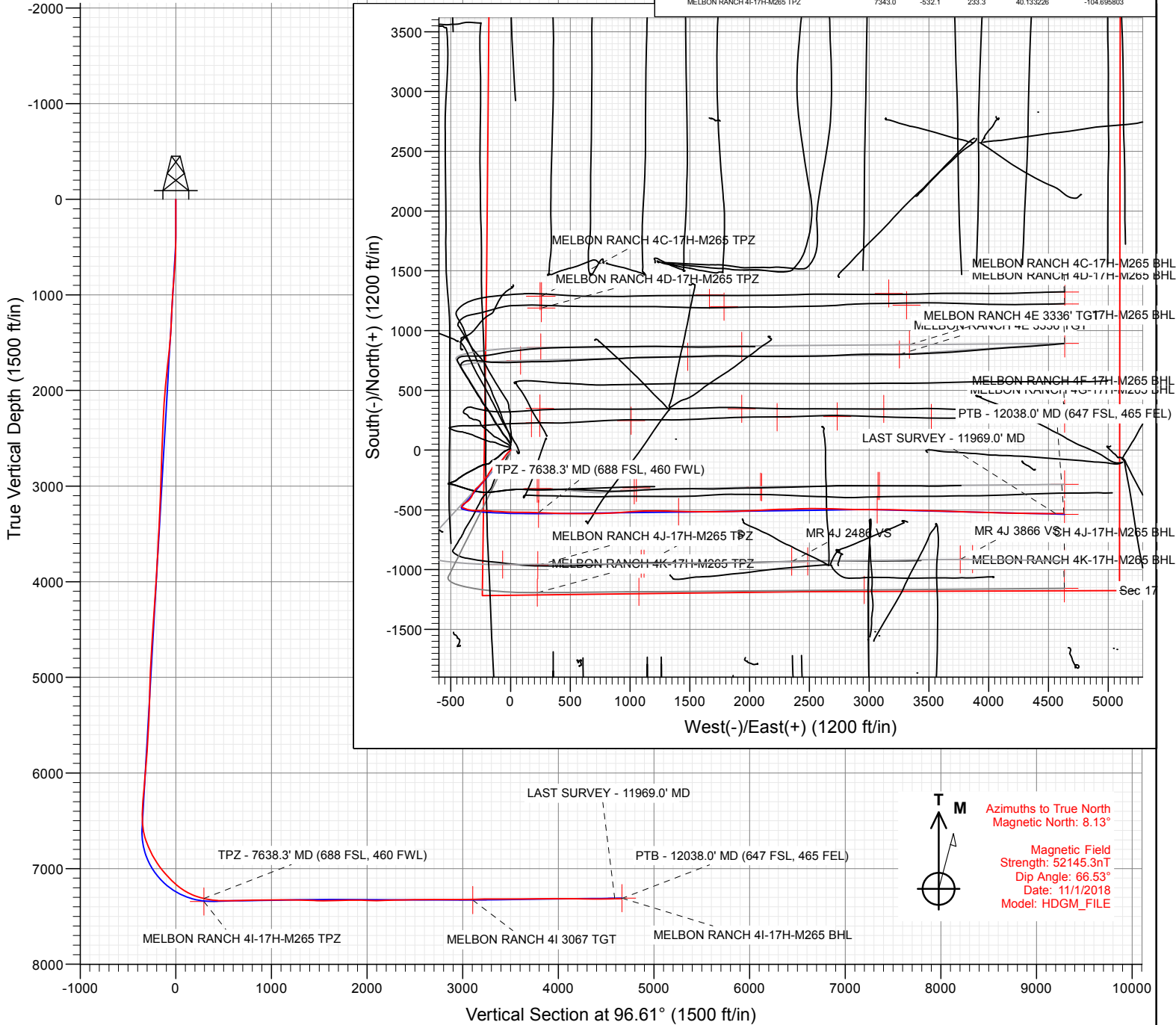
Project: Sec 17 T2N-R65W  
Site: Melbon Ranch Pad  
Well: MELBON RANCH 4I-17H-M265  
Wellbore: Wellbore #1  
Design: FINAL

#### SECTION DETAILS

Sec	MD	Inc	Azi	TVD	+N/-S	+E/-W	Dleg	TFace	VFace	Target
1	0.0	0.00	0.00	0.0	0.0	0.0	0.00	0.00	0.0	
2	300.0	0.00	0.00	300.0	0.0	0.0	0.00	0.00	0.0	
3	594.0	5.88	220.61	593.5	-11.4	-9.8	2.00	220.61	-8.4	
4	6611.6	5.88	220.61	6579.4	-479.5	-411.1	0.00	0.00	-353.2	
5	7797.2	90.98	89.34	7341.6	-531.1	316.2	8.00	-131.05	375.3	
6	8887.2	90.98	89.34	7323.0	-518.6	1406.0	0.00	0.00	1456.4	MELBON RANCH 4I 1406 TGT
7	8948.4	89.76	89.21	7322.6	-517.8	1467.1	2.00	-173.96	1517.0	
8	10390.2	89.76	89.21	7328.6	-498.0	2908.8	0.00	0.00	2946.8	
9	10548.4	90.69	91.39	7328.0	-498.9	3067.0	1.50	66.83	3104.0	MELBON RANCH 4I 3067 TGT
10	12116.1	90.69	91.39	7309.0	-537.0	4634.1	0.00	0.00	4665.1	MELBON RANCH 4I-17H-M265 BHL

FINAL  
MELBON RANCH 4I-17H-M265  
437637 156310  
WELL @ 4979.0ft (Original Well Elev)  
Ground Level @ 4956.0  
North American Datum 1983  
Well MELBON RANCH 4I-17H-M265, True North

Name	Type	User	Target	No Target (Freehand)	Azimuth	Origin	Type	N/S	E/W	From	TVD	Latitude	Longitude
MELBON RANCH 4I-17H-M265 BHL					96.61			0.0	0.0	0.0		40.133212	-104.696637
MELBON RANCH 4I 1406 TGT					7323.0			-518.6	1406.0	40.133263		-104.691509	
MELBON RANCH 4I 3067 TGT					7328.0			-498.9	3067.0	40.133317		-104.685668	
MELBON RANCH 4I-17H-M265 TPZ					7343.0			-532.1	233.3	40.133226		-104.695903	



#### WELL DETAILS: MELBON RANCH 4I-17H-M265

+N/-S	+E/-W	Northing	Easting	Latitude	Longitude
0.0	0.0	1292930.21	3224623.87	40.134687	-104.696637

CATHEDRAL





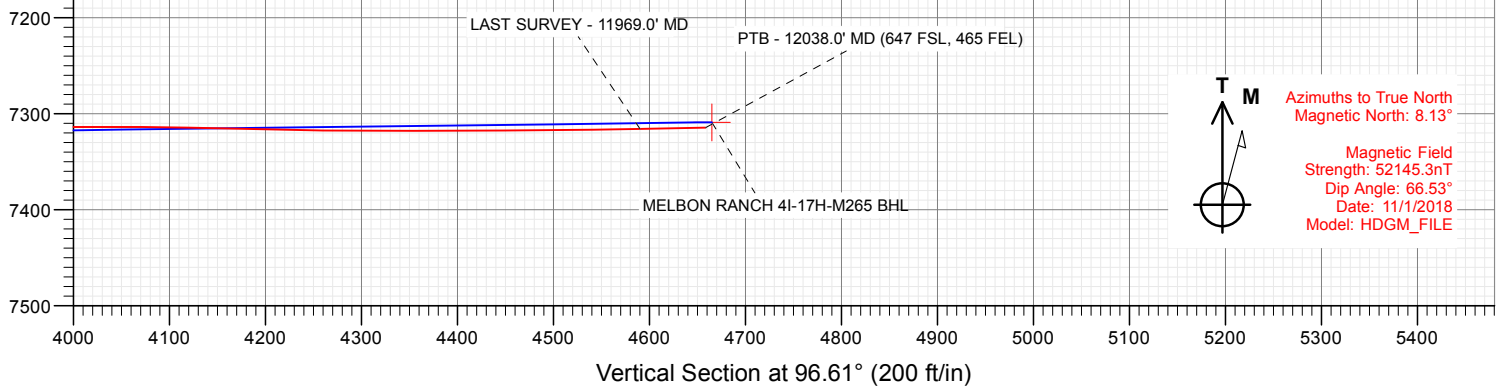
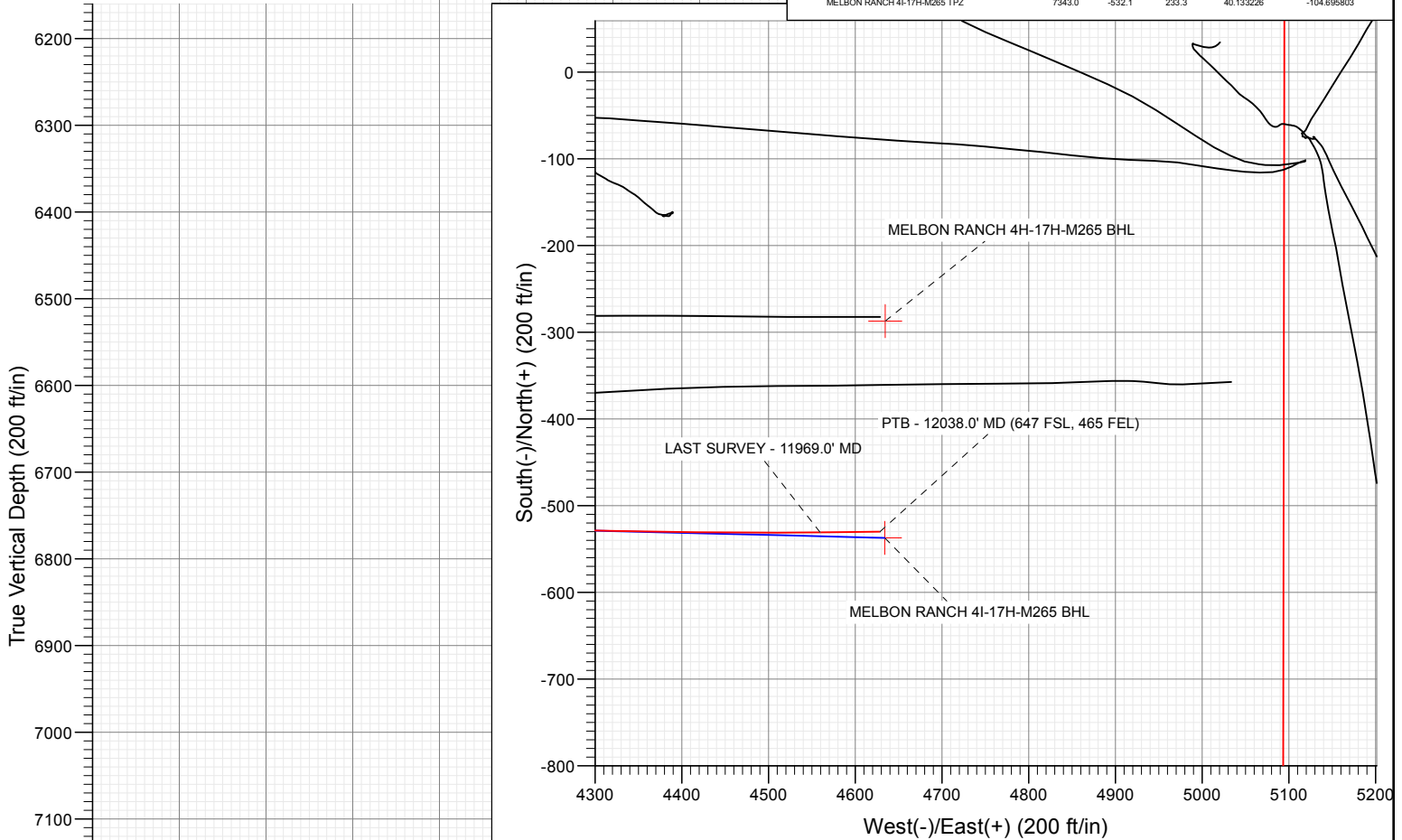
## SECTION DETAILS

Sec	MD	Inc	Azi	TVD	+N/-S	+E/-W	Dleg	TFace	VFace	Target
1	0.0	0.00	0.00	0.0	0.0	0.0	0.00	0.00	0.0	
2	300.0	0.00	0.00	300.0	0.0	0.0	0.00	0.00	0.0	
3	594.0	5.88	220.61	593.5	-11.4	-9.8	2.00	220.61	-8.4	
4	6611.6	5.88	220.61	6579.4	-479.5	-411.1	0.00	0.00	-353.2	
5	7797.2	90.98	89.34	7341.6	-531.1	316.2	8.00	-131.05	375.3	
6	8887.2	90.98	89.34	7323.0	-518.6	1406.0	0.00	0.00	1456.4	MELBON RANCH 4I 1406 TGT
7	8948.4	89.76	89.21	7322.6	-517.8	1467.1	2.00	-173.96	1517.0	
8	10390.2	89.76	89.21	7328.6	-498.0	2908.8	0.00	0.00	2946.8	
9	10548.4	90.69	91.39	7328.0	-498.9	3067.0	1.50	66.83	3104.0	MELBON RANCH 4I 3067 TGT
10	12116.1	90.69	91.39	7309.0	-537.0	4634.1	0.00	0.00	4665.1	MELBON RANCH 4I-17H-M265 BHL

Project: Sec 17 T2N-R65W  
Site: Melbon Ranch Pad  
Well: MELBON RANCH 4I-17H-M265  
Wellbore: Wellbore #1  
Design: FINAL

FINAL  
MELBON RANCH 4I-17H-M265  
437637 156310  
WELL @ 4979.0ft (Original Well Elev)  
Ground Level @ 4956.0  
North American Datum 1983  
Well MELBON RANCH 4I-17H-M265, True North

Type	Target	Origin	Slot	North	E/W	From	TVD
Name	User	No	Target	Target	Target	Target	Target
MELBON RANCH 4I-17H-M265 BHL	96.61	TVD	96.61	96.61	96.61	96.61	96.61
MELBON RANCH 4I 1406 TGT	7323.0	+N/-S	-537.0	4634.1	40.133212	-104.691509	-104.691509
MELBON RANCH 4I 3067 TGT	7328.0	+E/-W	-518.6	1406.0	40.133263	-104.685668	-104.685668
MELBON RANCH 4I-17H-M265 TP2	7343.0	Latitude	-532.1	233.3	40.133226	-104.695903	-104.695903



## WELL DETAILS: MELBON RANCH 4I-17H-M265

+N/-S	+E/-W	Northing	Easting	Latitude	Longitude
0.0	0.0	1292930.21	3224623.87	40.134687	-104.696637

CATHEDRAL



## Survey Report

<b>Company:</b>	Crestone Peak Resources	<b>Local Co-ordinate Reference:</b>	Well MELBON RANCH 4I-17H-M265
<b>Project:</b>	Sec 17 T2N-R65W	<b>TVD Reference:</b>	WELL @ 4979.0ft (Original Well Elev)
<b>Site:</b>	Melbon Ranch Pad	<b>MD Reference:</b>	WELL @ 4979.0ft (Original Well Elev)
<b>Well:</b>	MELBON RANCH 4I-17H-M265	<b>North Reference:</b>	True
<b>Wellbore:</b>	Wellbore #1	<b>Survey Calculation Method:</b>	Minimum Curvature
<b>Design:</b>	FINAL	<b>Database:</b>	USA EDM 5000 Multi Users DB

<b>Project</b>	Sec 17 T2N-R65W, Weld County, CO		
<b>Map System:</b>	US State Plane 1983	<b>System Datum:</b>	Mean Sea Level
<b>Geo Datum:</b>	North American Datum 1983		
<b>Map Zone:</b>	Colorado Northern Zone		

Site		Melbon Ranch Pad			
Site Position:		Northing:	1,292,990.36 ft	Latitude:	40.134852
From:	Map	Easting:	3,224,623.87 ft	Longitude:	-104.696635
Position Uncertainty:	0.0 ft	Slot Radius:	13.200 in	Grid Convergence:	0.52 °

Well		MELBON RANCH 4I-17H-M265				
Well Position	+N/-S	0.0 ft	Northing:	1,292,930.21 ft	Latitude:	40.134687
	+E/-W	0.0 ft	Easting:	3,224,623.87 ft	Longitude:	-104.696637
Position Uncertainty		0.0 ft	Wellhead Elevation:	ft	Ground Level:	4,956.0 ft

<b>Wellbore</b>	Wellbore #1				
<b>Magnetics</b>	<b>Model Name</b>	<b>Sample Date</b>	<b>Declination (°)</b>	<b>Dip Angle (°)</b>	<b>Field Strength (nT)</b>
	HDGM_FILE	11/1/2018	8.13	66.53	52,145.30000000

<b>Design</b>	FINAL				
<b>Audit Notes:</b>					
<b>Version:</b>	1.0	<b>Phase:</b>	ACTUAL	<b>Tie On Depth:</b>	0.0
<b>Vertical Section:</b>	<b>Depth From (TVD)</b>	<b>+N/-S</b>	<b>+E/-W</b>	<b>Direction</b>	
	(ft)	(ft)	(ft)	(°)	
	0.0	0.0	0.0	96.61	

<b>Survey Program</b>	<b>Date</b>	11/13/2018			
<b>From (ft)</b>	<b>To (ft)</b>	<b>Survey (Wellbore)</b>	<b>Tool Name</b>	<b>Description</b>	
181.0	2,335.0	Survey #1 (Wellbore #1)	GYRO-MWD	OWSG Gyro MWD	
2,451.0	12,038.0	Survey #2 (Wellbore #1)	MWD+HDGM	OWSG MWD + HDGM	

<b>Survey</b>										
<b>Measured Depth (ft)</b>	<b>Inclination (°)</b>	<b>Azimuth (°)</b>	<b>Vertical Depth (ft)</b>	<b>+N/-S (ft)</b>	<b>+E/-W (ft)</b>	<b>Vertical Section (ft)</b>	<b>Dogleg Rate (°/100ft)</b>	<b>Build Rate (°/100ft)</b>	<b>Formations / Comments</b>	
0.0	0.00	0.00	0.0	0.0	0.0	0.0	0.00	0.00		
181.0	0.62	170.24	181.0	-1.0	0.2	0.3	0.34	0.34		
275.0	0.26	171.21	275.0	-1.7	0.3	0.5	0.38	-0.38		
370.0	0.79	224.21	370.0	-2.4	-0.1	0.1	0.70	0.56		
465.0	1.41	233.00	465.0	-3.5	-1.5	-1.1	0.67	0.65		
559.0	3.08	236.51	558.9	-5.6	-4.6	-3.9	1.78	1.78		
654.0	4.84	227.46	653.7	-9.7	-9.6	-8.5	1.96	1.85		
748.0	6.42	226.23	747.2	-16.1	-16.4	-14.4	1.69	1.68		
822.0	7.12	225.33	820.7	-22.1	-22.6	-19.9	0.96	0.95		
917.0	7.24	222.90	915.0	-30.7	-30.9	-27.1	0.34	0.13		
1,011.0	6.66	216.58	1,008.3	-39.4	-38.1	-33.4	1.02	-0.62		
1,105.0	6.48	216.21	1,101.6	-48.0	-44.5	-38.7	0.20	-0.19		

## Survey Report

<b>Company:</b>	Crestone Peak Resources	<b>Local Co-ordinate Reference:</b>	Well MELBON RANCH 4I-17H-M265
<b>Project:</b>	Sec 17 T2N-R65W	<b>TVD Reference:</b>	WELL @ 4979.0ft (Original Well Elev)
<b>Site:</b>	Melbon Ranch Pad	<b>MD Reference:</b>	WELL @ 4979.0ft (Original Well Elev)
<b>Well:</b>	MELBON RANCH 4I-17H-M265	<b>North Reference:</b>	True
<b>Wellbore:</b>	Wellbore #1	<b>Survey Calculation Method:</b>	Minimum Curvature
<b>Design:</b>	FINAL	<b>Database:</b>	USA EDM 5000 Multi Users DB

Survey									
Measured Depth (ft)	Inclination (°)	Azimuth (°)	Vertical Depth (ft)	+N/-S (ft)	+E/-W (ft)	Vertical Section (ft)	Dogleg Rate (°/100ft)	Build Rate (°/100ft)	Formations / Comments
1,200.0	6.57	209.88	1,196.0	-57.1	-50.4	-43.5	0.76	0.09	
1,294.0	6.80	220.66	1,289.4	-66.0	-56.7	-48.7	1.36	0.24	
1,389.0	6.88	218.97	1,383.7	-74.7	-64.0	-54.9	0.23	0.08	
1,483.0	7.22	216.36	1,477.0	-83.8	-71.0	-60.9	0.50	0.36	
1,578.0	7.37	228.73	1,571.2	-92.6	-79.1	-67.9	1.66	0.16	
1,673.0	7.22	242.30	1,665.5	-99.4	-89.0	-76.9	1.82	-0.16	
1,767.0	7.89	245.03	1,758.7	-104.9	-100.1	-87.3	0.81	0.71	
1,862.0	8.35	242.77	1,852.7	-110.8	-112.1	-98.6	0.59	0.48	
1,956.0	6.87	233.98	1,945.9	-117.2	-122.7	-108.4	2.00	-1.57	
2,051.0	6.34	228.92	2,040.3	-124.0	-131.3	-116.1	0.83	-0.56	
2,146.0	6.10	225.60	2,134.7	-131.0	-138.8	-122.8	0.46	-0.25	
2,240.0	5.89	217.57	2,228.2	-138.3	-145.3	-128.5	0.92	-0.22	
2,335.0	5.75	210.62	2,322.7	-146.3	-150.7	-132.9	0.76	-0.15	LAST SURVEY - 2335.0' MD
2,451.0	4.53	205.62	2,438.2	-155.4	-155.7	-136.8	1.12	-1.05	
2,545.0	5.93	215.38	2,531.8	-162.7	-160.1	-140.3	1.76	1.49	
2,639.0	5.41	214.41	2,625.4	-170.3	-165.4	-144.7	0.56	-0.55	
2,734.0	4.22	210.81	2,720.0	-177.0	-169.7	-148.2	1.29	-1.25	
2,828.0	5.49	213.97	2,813.7	-183.7	-174.0	-151.7	1.38	1.35	
2,922.0	4.75	213.88	2,907.3	-190.7	-178.7	-155.6	0.79	-0.79	
3,017.0	4.53	211.25	3,002.0	-197.1	-182.8	-158.9	0.32	-0.23	
3,112.0	4.66	207.55	3,096.7	-203.8	-186.6	-161.9	0.34	0.14	
3,230.0	4.04	202.28	3,214.4	-211.9	-190.4	-164.7	0.62	-0.53	
3,325.0	5.63	221.79	3,309.0	-218.4	-194.7	-168.3	2.39	1.67	
3,419.0	7.25	220.47	3,402.4	-226.4	-201.7	-174.3	1.73	1.72	
3,513.0	6.24	217.57	3,495.8	-235.0	-208.6	-180.2	1.13	-1.07	
3,607.0	4.61	209.84	3,589.4	-242.3	-213.6	-184.3	1.90	-1.73	
3,703.0	5.76	215.55	3,685.0	-249.5	-218.3	-188.2	1.31	1.20	
3,797.0	6.77	218.89	3,778.4	-257.7	-224.6	-193.4	1.14	1.07	
3,892.0	6.59	218.54	3,872.8	-266.3	-231.5	-199.3	0.19	-0.19	
3,986.0	7.08	226.54	3,966.1	-274.5	-239.0	-205.9	1.14	0.52	
4,081.0	5.98	220.65	4,060.5	-282.3	-246.5	-212.4	1.35	-1.16	
4,175.0	5.01	219.07	4,154.1	-289.2	-252.3	-217.3	1.04	-1.03	
4,269.0	6.99	217.57	4,247.5	-296.9	-258.4	-222.5	2.11	2.11	
4,364.0	6.24	226.10	4,341.9	-305.1	-265.6	-228.7	1.30	-0.79	
4,458.0	4.57	233.39	4,435.5	-310.9	-272.3	-234.7	1.92	-1.78	
4,553.0	7.25	233.13	4,530.0	-316.7	-280.1	-241.8	2.82	2.82	
4,647.0	6.72	223.46	4,623.3	-324.3	-288.7	-249.4	1.37	-0.56	
4,742.0	5.63	221.53	4,717.7	-331.8	-295.6	-255.4	1.17	-1.15	
4,836.0	6.99	209.49	4,811.2	-340.2	-301.4	-260.3	2.01	1.45	
4,930.0	6.11	208.35	4,904.5	-349.6	-306.6	-264.4	0.95	-0.94	
5,025.0	5.36	209.66	4,999.1	-357.9	-311.2	-268.0	0.80	-0.79	
5,120.0	6.55	204.74	5,093.6	-366.7	-315.7	-271.4	1.36	1.25	
5,214.0	5.27	197.97	5,187.1	-375.7	-319.3	-273.9	1.55	-1.36	
5,308.0	5.14	201.49	5,280.7	-383.7	-322.1	-275.8	0.37	-0.14	
5,402.0	5.41	211.33	5,374.3	-391.4	-326.0	-278.8	1.00	0.29	
5,497.0	6.59	219.77	5,468.7	-399.4	-331.8	-283.6	1.55	1.24	
5,591.0	5.63	213.53	5,562.2	-407.4	-337.8	-288.7	1.24	-1.02	
5,686.0	5.23	229.00	5,656.8	-414.1	-343.7	-293.7	1.59	-0.42	
5,780.0	5.54	224.61	5,750.4	-420.2	-350.1	-299.4	0.55	0.33	
5,875.0	6.50	230.41	5,844.9	-426.9	-357.4	-305.9	1.20	1.01	
5,969.0	7.56	235.42	5,938.1	-433.8	-366.6	-314.3	1.30	1.13	
6,063.0	5.67	236.73	6,031.5	-439.8	-375.6	-322.5	2.02	-2.01	
6,158.0	5.67	240.60	6,126.1	-444.7	-383.6	-329.9	0.40	0.00	

# Survey Report

<b>Company:</b>	Crestone Peak Resources	<b>Local Co-ordinate Reference:</b>	Well MELBON RANCH 4I-17H-M265
<b>Project:</b>	Sec 17 T2N-R65W	<b>TVD Reference:</b>	WELL @ 4979.0ft (Original Well Elev)
<b>Site:</b>	Melbon Ranch Pad	<b>MD Reference:</b>	WELL @ 4979.0ft (Original Well Elev)
<b>Well:</b>	MELBON RANCH 4I-17H-M265	<b>North Reference:</b>	True
<b>Wellbore:</b>	Wellbore #1	<b>Survey Calculation Method:</b>	Minimum Curvature
<b>Design:</b>	FINAL	<b>Database:</b>	USA EDM 5000 Multi Users DB

Survey									
Measured Depth (ft)	Inclination (°)	Azimuth (°)	Vertical Depth (ft)	+N/-S (ft)	+E/-W (ft)	Vertical Section (ft)	Dogleg Rate (°/100ft)	Build Rate (°/100ft)	Formations / Comments
6,252.0	6.64	231.99	6,219.5	-450.3	-391.9	-337.5	1.42	1.03	
6,347.0	6.94	218.54	6,313.9	-458.2	-399.8	-344.4	1.70	0.32	
6,441.0	6.59	210.89	6,407.2	-467.3	-406.2	-349.7	1.03	-0.37	
6,536.0	4.48	162.20	6,501.8	-475.5	-407.8	-350.4	5.21	-2.22	
6,583.0	7.60	120.63	6,548.6	-478.8	-404.6	-346.8	11.02	6.64	
6,630.0	9.32	118.26	6,595.0	-482.2	-398.6	-340.4	3.73	3.66	
6,677.0	12.88	113.69	6,641.2	-486.1	-390.4	-331.9	7.80	7.57	
6,725.0	18.24	112.02	6,687.4	-491.1	-378.5	-319.5	11.20	11.17	
6,772.0	21.49	105.60	6,731.6	-496.2	-363.4	-303.9	8.32	6.91	
6,819.0	23.91	99.71	6,774.9	-500.1	-345.7	-285.9	7.06	5.15	
6,866.0	25.71	97.43	6,817.6	-503.0	-326.2	-266.2	4.34	3.83	
6,914.0	28.13	94.53	6,860.4	-505.2	-304.6	-244.4	5.73	5.04	
6,961.0	30.89	91.10	6,901.3	-506.3	-281.5	-221.4	6.88	5.87	
7,008.0	33.88	91.45	6,941.0	-506.9	-256.3	-196.3	6.37	6.36	
7,055.0	36.39	91.28	6,979.4	-507.6	-229.3	-169.4	5.34	5.34	
7,102.0	38.58	92.15	7,016.7	-508.4	-200.7	-140.9	4.79	4.66	
7,149.0	40.96	95.14	7,052.8	-510.3	-170.7	-110.8	6.50	5.06	
7,197.0	43.55	92.42	7,088.4	-512.5	-138.5	-78.6	6.60	5.40	
7,244.0	46.67	92.68	7,121.5	-513.9	-105.3	-45.4	6.65	6.64	
7,291.0	46.93	93.65	7,153.7	-515.8	-71.1	-11.2	1.60	0.55	
7,338.0	50.93	92.94	7,184.6	-517.9	-35.7	24.2	8.59	8.51	
7,386.0	55.94	90.57	7,213.2	-519.0	2.8	62.6	11.16	10.44	
7,433.0	60.25	90.75	7,238.0	-519.5	42.7	102.2	9.18	9.17	
7,481.0	63.59	91.28	7,260.6	-520.2	85.1	144.4	7.03	6.96	
7,528.0	67.98	91.01	7,279.9	-521.1	127.9	187.0	9.36	9.34	
7,575.0	72.95	90.92	7,295.6	-521.8	172.2	231.1	10.58	10.57	
7,622.0	76.33	90.84	7,308.0	-522.5	217.5	276.2	7.19	7.19	
7,638.3	77.00	91.26	7,311.8	-522.8	233.3	292.0	4.82	4.12	TPZ - 7638.3' MD (688 FSL, 460 FWL)
7,670.0	78.31	92.07	7,318.6	-523.7	264.3	322.8	4.82	4.13	
7,717.0	81.43	92.68	7,326.8	-525.6	310.5	369.0	6.76	6.64	
7,764.0	85.61	91.71	7,332.1	-527.4	357.2	415.5	9.13	8.89	
7,859.0	90.88	91.89	7,335.0	-530.4	452.0	510.1	5.55	5.55	
7,953.0	90.35	89.61	7,334.0	-531.6	546.0	603.6	2.49	-0.56	
8,048.0	90.97	89.52	7,332.9	-530.9	641.0	697.9	0.66	0.65	
8,142.0	91.45	89.52	7,331.0	-530.1	735.0	791.1	0.51	0.51	
8,237.0	91.41	87.67	7,328.6	-527.8	829.9	885.2	1.95	-0.04	
8,332.0	90.84	85.30	7,326.7	-522.0	924.7	978.7	2.57	-0.60	
8,426.0	89.82	86.09	7,326.2	-514.9	1,018.5	1,071.0	1.37	-1.09	
8,520.0	88.95	87.85	7,327.2	-509.9	1,112.3	1,163.6	2.09	-0.93	
8,615.0	89.47	91.10	7,328.5	-509.1	1,207.3	1,257.9	3.46	0.55	
8,709.0	88.59	90.48	7,330.1	-510.4	1,301.3	1,351.4	1.15	-0.94	
8,803.0	87.41	91.19	7,333.4	-511.7	1,395.2	1,444.8	1.46	-1.26	
8,898.0	89.78	90.92	7,335.7	-513.5	1,490.1	1,539.4	2.51	2.49	
8,992.0	91.58	90.92	7,334.6	-515.0	1,584.1	1,632.9	1.91	1.91	
9,087.0	92.11	90.84	7,331.5	-516.5	1,679.1	1,727.4	0.56	0.56	
9,182.0	90.35	88.99	7,329.5	-516.3	1,774.0	1,821.7	2.69	-1.85	
9,276.0	88.33	87.23	7,330.6	-513.2	1,868.0	1,914.6	2.85	-2.15	
9,371.0	87.98	87.06	7,333.6	-508.5	1,962.8	2,008.3	0.41	-0.37	
9,465.0	91.45	87.06	7,334.1	-503.7	2,056.7	2,101.0	3.69	3.69	
9,560.0	91.85	87.14	7,331.4	-498.9	2,151.5	2,194.6	0.43	0.42	
9,654.0	91.01	89.34	7,329.0	-496.0	2,245.4	2,287.6	2.50	-0.89	
9,749.0	91.98	89.08	7,326.5	-494.7	2,340.4	2,381.8	1.06	1.02	
9,843.0	90.40	87.50	7,324.6	-491.9	2,434.3	2,474.7	2.38	-1.68	

## Survey Report

<b>Company:</b>	Crestone Peak Resources	<b>Local Co-ordinate Reference:</b>	Well MELBON RANCH 4I-17H-M265
<b>Project:</b>	Sec 17 T2N-R65W	<b>TVD Reference:</b>	WELL @ 4979.0ft (Original Well Elev)
<b>Site:</b>	Melbon Ranch Pad	<b>MD Reference:</b>	WELL @ 4979.0ft (Original Well Elev)
<b>Well:</b>	MELBON RANCH 4I-17H-M265	<b>North Reference:</b>	True
<b>Wellbore:</b>	Wellbore #1	<b>Survey Calculation Method:</b>	Minimum Curvature
<b>Design:</b>	FINAL	<b>Database:</b>	USA EDM 5000 Multi Users DB

### Survey

Measured Depth (ft)	Inclination (°)	Azimuth (°)	Vertical Depth (ft)	+N/-S (ft)	+E/-W (ft)	Vertical Section (ft)	Dogleg Rate (°/100ft)	Build Rate (°/100ft)	Formations / Comments
9,937.0	89.82	88.81	7,324.4	-488.8	2,528.3	2,567.7	1.52	-0.62	
10,032.0	89.78	91.89	7,324.7	-489.4	2,623.2	2,662.1	3.24	-0.04	
10,126.0	90.13	91.89	7,324.8	-492.5	2,717.2	2,755.8	0.37	0.37	
10,220.0	90.66	91.89	7,324.2	-495.6	2,811.1	2,849.5	0.56	0.56	
10,314.0	90.18	90.22	7,323.5	-497.3	2,905.1	2,943.1	1.85	-0.51	
10,409.0	90.97	90.13	7,322.5	-497.6	3,000.1	3,037.5	0.84	0.83	
10,504.0	91.85	90.04	7,320.2	-497.8	3,095.1	3,131.8	0.93	0.93	
10,598.0	90.04	91.28	7,318.6	-498.9	3,189.1	3,225.3	2.33	-1.93	
10,692.0	91.10	92.33	7,317.7	-501.8	3,283.0	3,318.9	1.59	1.13	
10,787.0	88.90	90.57	7,317.7	-504.2	3,378.0	3,413.6	2.97	-2.32	
10,881.0	89.56	91.54	7,319.0	-506.0	3,471.9	3,507.1	1.25	0.70	
10,976.0	90.40	91.63	7,319.0	-508.6	3,566.9	3,601.7	0.89	0.88	
11,070.0	91.63	91.80	7,317.3	-511.4	3,660.8	3,695.4	1.32	1.31	
11,165.0	91.41	91.98	7,314.8	-514.5	3,755.8	3,790.0	0.30	-0.23	
11,260.0	89.69	91.71	7,313.9	-517.6	3,850.7	3,884.7	1.83	-1.81	
11,354.0	90.40	91.98	7,313.8	-520.6	3,944.7	3,978.4	0.81	0.76	
11,448.0	89.52	92.07	7,313.9	-523.9	4,038.6	4,072.1	0.94	-0.94	
11,543.0	88.42	90.57	7,315.6	-526.1	4,133.6	4,166.6	1.96	-1.16	
11,637.0	89.34	90.92	7,317.4	-527.3	4,227.5	4,260.1	1.05	0.98	
11,732.0	90.13	91.10	7,317.9	-529.0	4,322.5	4,354.7	0.85	0.83	
11,826.0	90.31	90.66	7,317.5	-530.5	4,416.5	4,448.2	0.51	0.19	
11,920.0	90.70	90.04	7,316.7	-531.0	4,510.5	4,541.6	0.78	0.41	
11,969.0	91.19	89.25	7,315.9	-530.7	4,559.5	4,590.2	1.90	1.00	LAST SURVEY - 11969.0' MD
12,038.0	91.19	89.25	7,314.4	-529.8	4,628.4	4,658.7	0.00	0.00	PTB - 12038.0' MD (647 FSL, 465 FEL)

## Survey Report

<b>Company:</b>	Crestone Peak Resources	<b>Local Co-ordinate Reference:</b>	Well MELBON RANCH 4I-17H-M265
<b>Project:</b>	Sec 17 T2N-R65W	<b>TVD Reference:</b>	WELL @ 4979.0ft (Original Well Elev)
<b>Site:</b>	Melbon Ranch Pad	<b>MD Reference:</b>	WELL @ 4979.0ft (Original Well Elev)
<b>Well:</b>	MELBON RANCH 4I-17H-M265	<b>North Reference:</b>	True
<b>Wellbore:</b>	Wellbore #1	<b>Survey Calculation Method:</b>	Minimum Curvature
<b>Design:</b>	FINAL	<b>Database:</b>	USA EDM 5000 Multi Users DB

Targets									
Target Name	Dip Angle	Dip Dir.	TVD	+N/-S	+E/-W	Northing	Easting	Latitude	Longitude
- hit/miss target	(°)	(°)	(ft)	(ft)	(ft)	(ft)	(ft)		
- Shape									
MELBON RANCH 4I 14I	0.00	0.00	7,323.0	-518.6	1,406.0	1,292,424.37	3,226,034.51	40.133263	-104.691609
- actual wellpath misses target center by 12.7ft at 8813.7ft MD (7333.8 TVD, -512.0 N, 1405.9 E)									
- Point									
MELBON RANCH 4I-17I	0.00	0.52	7,343.0	-532.1	233.3	1,292,400.26	3,224,862.00	40.133226	-104.695803
- actual wellpath misses target center by 31.8ft at 7645.2ft MD (7313.3 TVD, -523.0 N, 240.1 E)									
- Point									
MELBON RANCH 4I 30I	0.00	0.00	7,328.0	-498.9	3,067.0	1,292,459.16	3,227,695.26	40.133317	-104.685668
- actual wellpath misses target center by 7.1ft at 10475.8ft MD (7321.0 TVD, -497.8 N, 3066.8 E)									
- Point									
MELBON RANCH 4I-17I	0.00	0.53	7,309.0	-537.0	4,634.1	1,292,435.20	3,229,262.60	40.133212	-104.680064
- actual wellpath misses target center by 10.6ft at 12038.0ft MD (7314.4 TVD, -529.8 N, 4628.4 E)									
- Point									

Design Annotations				
Measured Depth	Vertical Depth	Local Coordinates		Comment
(ft)	(ft)	+N/-S (ft)	+E/-W (ft)	
2,335.0	2,322.7	-146.3	-150.7	LAST SURVEY - 2335.0' MD
7,638.3	7,311.8	-522.8	233.3	TPZ - 7638.3' MD (688 FSL, 460 FWL)
11,969.0	7,315.9	-530.7	4,559.5	LAST SURVEY - 11969.0' MD
12,038.0	7,314.4	-529.8	4,628.4	PTB - 12038.0' MD (647 FSL, 465 FEL)

Checked By: \_\_\_\_\_ Approved By: \_\_\_\_\_ Date: \_\_\_\_\_