



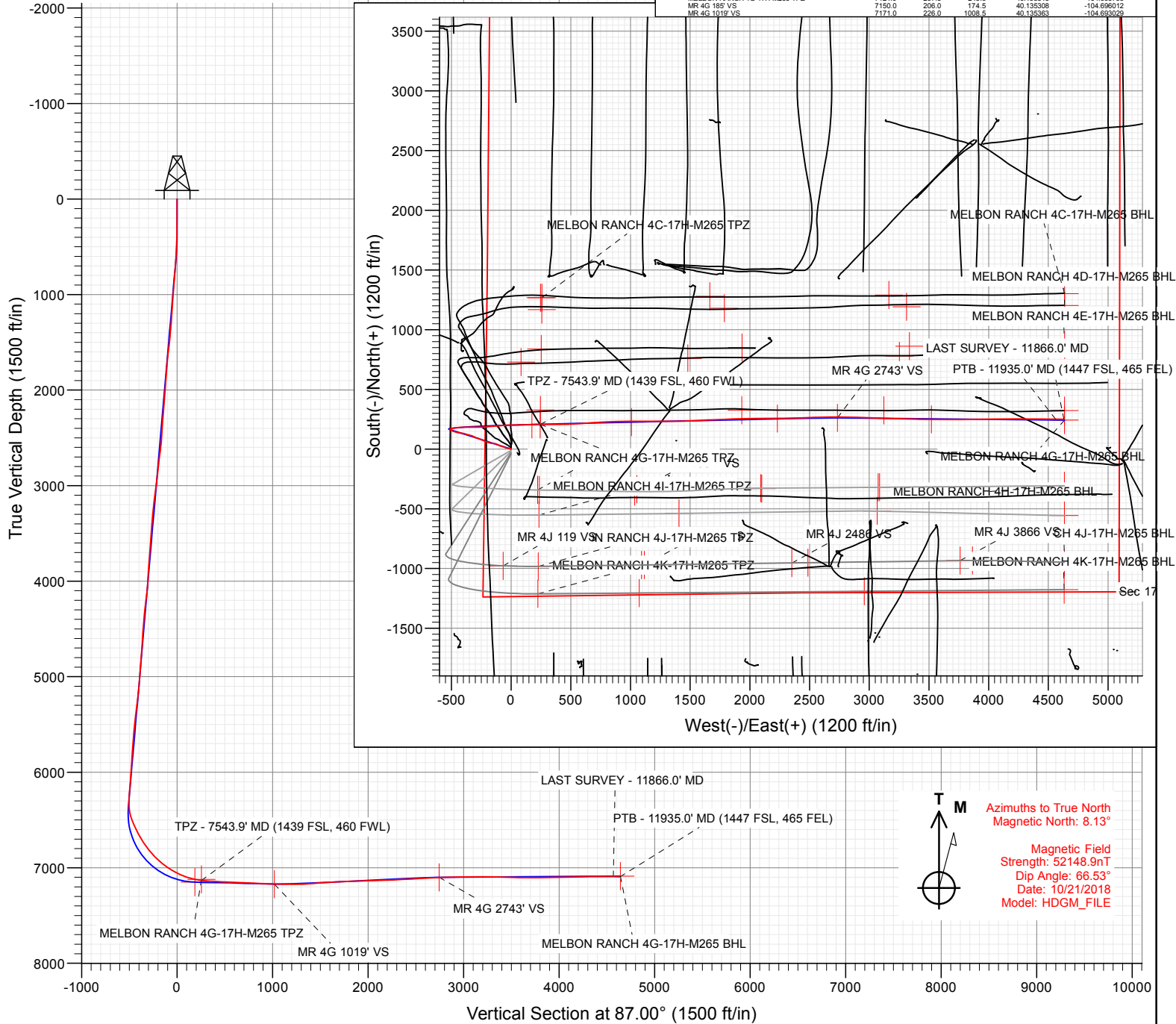
Project: Sec 17 T2N-R65W  
Site: Melbon Ranch Pad  
Well: MELBON RANCH 4G-17H-M265  
Wellbore: Wellbore #1  
Design: FINAL

#### SECTION DETAILS

Sec	MD	Inc	Azi	TVD	+N/-S	+E/-W	Dleg	TFace	VFace	Target
1	0.0	0.00	0.00	0.0	0.0	0.0	0.00	0.00	0.0	
2	350.0	0.00	0.00	350.0	0.0	0.0	0.00	0.00	0.0	
3	614.9	5.30	287.73	614.5	3.7	-11.7	2.00	287.73	-11.4	
4	6397.0	5.30	287.73	6371.9	166.3	-520.2	0.00	0.00	-510.8	
5	7566.5	88.56	88.63	7150.0	206.0	174.5	8.00	160.86	185.0	MR 4G 185' VS
6	8401.1	88.56	88.63	7171.0	226.0	1008.5	0.00	0.00	1019.0	MR 4G 1019' VS
7	8608.5	92.70	88.76	7168.7	230.8	1215.8	2.00	1.85	1226.2	
8	9981.0	92.70	88.76	7104.0	260.5	2586.5	0.00	0.00	2596.6	
9	10127.7	90.39	90.56	7100.0	261.3	2733.1	2.00	142.02	2743.0	MR 4G 2743' VS
10	12029.8	90.39	90.56	7087.0	242.6	4635.1	0.00	0.00	4641.4	MELBON RANCH 4G-17H-M265 BHL

FINAL  
MELBON RANCH 4G-17H-M265  
499237  
WELL @ 4979.0ft (Original Well Elev)  
Ground Level @ 4955.0  
North American Datum 1983  
Well MELBON RANCH 4G-17H-M265, True North

Type	Target	No	Target	Freehand	Azimuth	Origin	Type	N/S	E/W	From	TVD
Name	User				87.00	Slot		0.0	0.0	0.0	
MELBON RANCH 4G-17H-M265 BHL					7087.0			+N/-S	+E/-W	Latitude	Longitude
MELBON RANCH 4G 3520 TGT					7089.0			242.6	4635.1	40.135437	-104.680059
MR 4G 2743' VS					7100.0			248.4	3520.0	40.135423	-104.68047
MELBON RANCH 4G 2230 TGT					7104.0			261.3	2733.1	40.135459	-104.686861
MELBON RANCH 4G-17H-M265 TPZ					7121.0			255.2	2230.0	40.135443	-104.688661
MR 4G 185' VS					7150.0			207.8	243.6	40.135313	-104.695765
MR 4G 1019' VS					7171.0			206.0	174.5	40.135308	-104.696012
								226.0	1008.5	40.135353	-104.695029



#### WELL DETAILS: MELBON RANCH 4G-17H-M265

+N/-S	+E/-W	Northing	Easting	Latitude	Longitude
0.0	0.0	1292950.35	3224623.87	40.134742	-104.696636





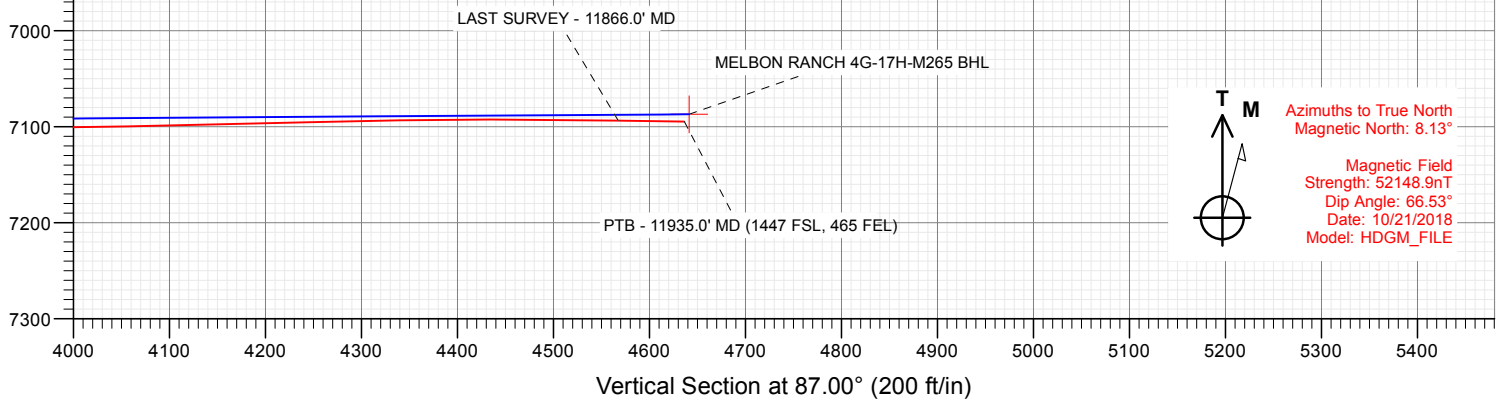
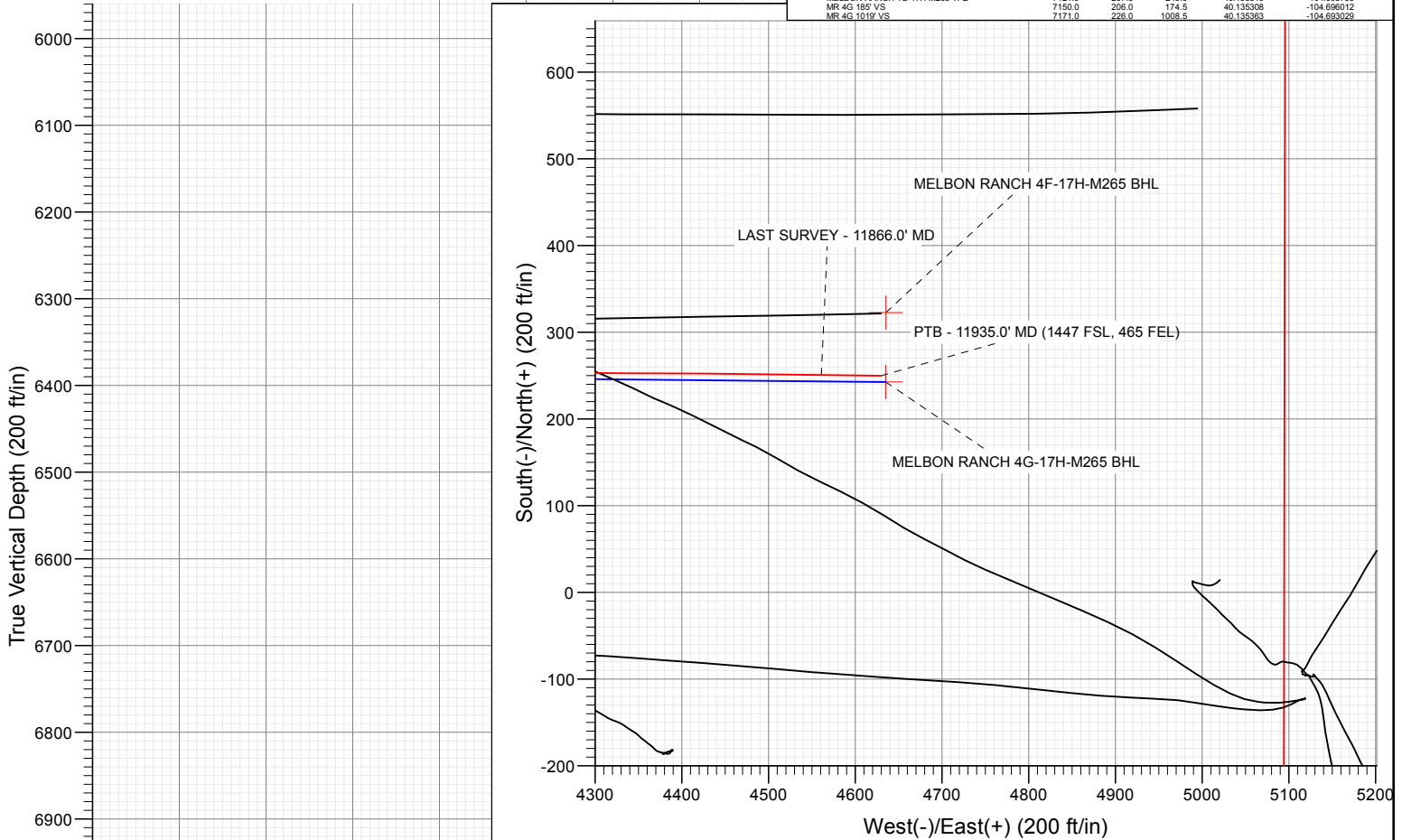
## SECTION DETAILS

Sec	MD	Inc	Azi	TVD	+N/-S	+E/-W	Dleg	TFace	Vsect	Target
1	5943.0	8.82	330.17	5887.6	675.6	-417.0	0.00	0.00	-291.7	
2	6135.5	10.00	80.00	6078.6	691.4	-407.8	8.00	142.03	-279.8	
3	6594.4	10.00	80.00	6530.5	705.3	-329.3	0.00	0.00	-200.1	
4	7579.5	88.69	88.76	7123.4	735.7	359.4	8.00	8.93	482.8	
5	8701.4	88.69	88.76	7149.0	760.0	1480.8	0.00	0.00	1590.0	MELBON RANCH 4E 1590 TGT
6	8872.3	92.02	89.57	7147.9	762.5	1651.7	2.00	13.69	1758.5	
7	10289.1	92.02	89.57	7098.1	773.1	3067.5	0.00	0.00	3153.0	
8	10474.2	90.54	86.18	7094.0	780.0	3252.4	2.00	-113.50	3336.0	MELBON RANCH 4E 3336 TGT
9	11861.0	90.54	86.18	7081.0	872.5	4636.1	0.00	0.00	4713.6	MELBON RANCH 4E-17H-M265 BHL

Project: Sec 17 T2N-R65W  
Site: Melbon Ranch Pad  
Well: MELBON RANCH 4G-17H-M265  
Wellbore: OH  
Design: FINAL

FINAL  
MELBON RANCH 4G-17H-M265  
499237  
WELL @ 4979.0ft (Original Well Elev)  
Ground Level @ 4955.0  
North American Datum 1983  
Well MELBON RANCH 4G-17H-M265, True North

Type	Target	No	Target	(Freehand)	Azimuth	Origin	Type	N/S	E/W	From	TVD	0.0
Name	User	No	Target	(Freehand)	87.00	Slot						
MELBON RANCH 4G-17H-M265 BHL					7087.0	242.6		4635.1	40.135407			-104.680059
MELBON RANCH 4G 3520 TGT					7089.0	248.4		3520.0	40.135423			-104.680417
MR 4G 2743 VS					7100.0	261.3		2733.1	40.135459			-104.686861
MELBON RANCH 4G 2230 TGT					7104.0	255.2		2230.0	40.135443			-104.688661
MELBON RANCH 4G-17H-M265 TP2					7121.0	207.8		243.6	40.135313			-104.695765
MR 4G 188 VS					7150.0	206.0		174.5	40.135308			-104.696012
MR 4G 1018 VS					7171.0	226.0		1006.5	40.135363			-104.695029



Azimuths to True North  
Magnetic North: 8.13°

Magnetic Field  
Strength: 52148.9nT  
Dip Angle: 66.53°  
Date: 10/21/2018  
Model: HDGM\_FILE

## WELL DETAILS: MELBON RANCH 4G-17H-M265

+N/-S 0.0 +E/-W 0.0 Northing 1292950.35 Easting 3224623.87 4956.0 Latitude 40.134742 Longitude -104.696636

CATHEDRAL



## Survey Report

<b>Company:</b>	Crestone Peak Resources	<b>Local Co-ordinate Reference:</b>	Well MELBON RANCH 4G-17H-M265
<b>Project:</b>	Sec 17 T2N-R65W	<b>TVD Reference:</b>	WELL @ 4979.0ft (Original Well Elev)
<b>Site:</b>	Melbon Ranch Pad	<b>MD Reference:</b>	WELL @ 4979.0ft (Original Well Elev)
<b>Well:</b>	MELBON RANCH 4G-17H-M265	<b>North Reference:</b>	True
<b>Wellbore:</b>	Wellbore #1	<b>Survey Calculation Method:</b>	Minimum Curvature
<b>Design:</b>	FINAL	<b>Database:</b>	USA EDM 5000 Multi Users DB

<b>Project</b>	Sec 17 T2N-R65W, Weld County, CO		
<b>Map System:</b>	US State Plane 1983	<b>System Datum:</b>	Mean Sea Level
<b>Geo Datum:</b>	North American Datum 1983		
<b>Map Zone:</b>	Colorado Northern Zone		

Site		Melbon Ranch Pad			
Site Position:		Northing:	1,292,990.36 ft	Latitude:	40.134852
From:	Map	Easting:	3,224,623.87 ft	Longitude:	-104.696635
Position Uncertainty:	0.0 ft	Slot Radius:	13.200 in	Grid Convergence:	0.52 °

Well	MELBON RANCH 4G-17H-M265					
Well Position	+N/-S	0.0 ft	Northing:	1,292,950.35 ft	Latitude:	40.134742
	+E/-W	0.0 ft	Easting:	3,224,623.87 ft	Longitude:	-104.696636
Position Uncertainty		0.0 ft	Wellhead Elevation:	ft	Ground Level:	4,956.0 ft

<b>Wellbore</b>	Wellbore #1				
<b>Magnetics</b>	<b>Model Name</b>	<b>Sample Date</b>	<b>Declination (°)</b>	<b>Dip Angle (°)</b>	<b>Field Strength (nT)</b>
	HDGM_FILE	10/21/2018	8.13	66.53	52,148.90000000

<b>Design</b>	FINAL				
<b>Audit Notes:</b>					
<b>Version:</b>	1.0	<b>Phase:</b>	ACTUAL	<b>Tie On Depth:</b>	0.0
<b>Vertical Section:</b>	<b>Depth From (TVD)</b>	<b>+N/-S</b>	<b>+E/-W</b>	<b>Direction</b>	
	(ft)	(ft)	(ft)	(°)	
	0.0	0.0	0.0	87.00	

<b>Survey Program</b>	<b>Date</b>	10/28/2018			
<b>From (ft)</b>	<b>To (ft)</b>	<b>Survey (Wellbore)</b>	<b>Tool Name</b>	<b>Description</b>	
181.0	2,335.0	Survey #1 (Wellbore #1)	GYRO-MWD	OWSG Gyro MWD	
2,451.0	11,935.0	Survey #2 (Wellbore #1)	MWD+HDGM	OWSG MWD + HDGM	

<b>Survey</b>										
<b>Measured Depth (ft)</b>	<b>Inclination (°)</b>	<b>Azimuth (°)</b>	<b>Vertical Depth (ft)</b>	<b>+N/-S (ft)</b>	<b>+E/-W (ft)</b>	<b>Vertical Section (ft)</b>	<b>Dogleg Rate (°/100ft)</b>	<b>Build Rate (°/100ft)</b>	<b>Formations / Comments</b>	
0.0	0.00	0.00	0.0	0.0	0.0	0.0	0.00	0.00		
181.0	0.53	292.41	181.0	0.3	-0.8	-0.8	0.29	0.29		
275.0	0.26	315.35	275.0	0.6	-1.3	-1.3	0.33	-0.29		
370.0	1.41	295.58	370.0	1.3	-2.5	-2.5	1.23	1.21		
465.0	2.20	292.41	464.9	2.5	-5.3	-5.1	0.84	0.83		
559.0	3.08	289.95	558.8	4.0	-9.3	-9.1	0.94	0.94		
653.0	3.52	279.14	652.7	5.4	-14.5	-14.2	0.81	0.47		
748.0	4.49	280.37	747.4	6.5	-21.1	-20.7	1.02	1.02		
842.0	4.93	282.48	841.1	8.0	-28.6	-28.2	0.50	0.47		
917.0	5.02	277.39	915.8	9.2	-35.0	-34.5	0.60	0.12		
1,012.0	4.61	291.18	1,010.5	11.1	-42.7	-42.1	1.29	-0.43		
1,107.0	4.22	286.52	1,105.2	13.4	-49.6	-48.9	0.56	-0.41		

## Survey Report

<b>Company:</b>	Crestone Peak Resources	<b>Local Co-ordinate Reference:</b>	Well MELBON RANCH 4G-17H-M265
<b>Project:</b>	Sec 17 T2N-R65W	<b>TVD Reference:</b>	WELL @ 4979.0ft (Original Well Elev)
<b>Site:</b>	Melbon Ranch Pad	<b>MD Reference:</b>	WELL @ 4979.0ft (Original Well Elev)
<b>Well:</b>	MELBON RANCH 4G-17H-M265	<b>North Reference:</b>	True
<b>Wellbore:</b>	Wellbore #1	<b>Survey Calculation Method:</b>	Minimum Curvature
<b>Design:</b>	FINAL	<b>Database:</b>	USA EDM 5000 Multi Users DB

### Survey

Measured Depth (ft)	Inclination (°)	Azimuth (°)	Vertical Depth (ft)	+N/-S (ft)	+E/-W (ft)	Vertical Section (ft)	Dogleg Rate (°/100ft)	Build Rate (°/100ft)	Formations / Comments
1,201.0	4.17	280.31	1,199.0	15.0	-56.3	-55.4	0.49	-0.05	
1,295.0	5.00	292.39	1,292.7	17.2	-63.5	-62.5	1.35	0.88	
1,390.0	5.08	290.90	1,387.3	20.3	-71.2	-70.1	0.16	0.08	
1,484.0	6.13	287.76	1,480.9	23.3	-79.9	-78.6	1.16	1.12	
1,579.0	7.71	288.79	1,575.2	26.9	-90.7	-89.2	1.67	1.66	
1,673.0	6.69	292.36	1,668.4	31.0	-101.8	-100.0	1.18	-1.09	
1,768.0	4.99	300.40	1,762.9	35.2	-110.5	-108.5	1.98	-1.79	
1,862.0	4.68	298.39	1,856.6	39.1	-117.4	-115.2	0.38	-0.33	
1,957.0	4.38	288.62	1,951.3	42.1	-124.2	-121.8	0.87	-0.32	
2,051.0	4.86	286.55	2,045.0	44.4	-131.4	-128.9	0.54	0.51	
2,146.0	5.13	281.45	2,139.6	46.4	-139.4	-136.8	0.55	0.28	
2,240.0	4.63	277.53	2,233.3	47.7	-147.3	-144.6	0.64	-0.53	
2,335.0	4.09	274.44	2,328.0	48.5	-154.5	-151.8	0.62	-0.57	
2,451.0	2.81	260.38	2,443.8	48.3	-161.4	-158.7	1.31	-1.10	
2,545.0	5.63	283.05	2,537.6	49.0	-168.2	-165.4	3.43	3.00	
2,639.0	7.08	285.43	2,631.0	51.6	-178.3	-175.3	1.57	1.54	
2,733.0	8.31	290.44	2,724.1	55.5	-190.2	-187.1	1.49	1.31	
2,828.0	7.30	290.35	2,818.2	60.0	-202.3	-198.9	1.06	-1.06	
2,923.0	6.15	291.31	2,912.6	63.9	-212.7	-209.1	1.22	-1.21	
3,017.0	8.70	292.37	3,005.8	68.4	-224.0	-220.1	2.72	2.71	
3,112.0	8.00	291.14	3,099.8	73.6	-236.8	-232.6	0.76	-0.74	
3,230.0	6.86	290.70	3,216.8	79.0	-251.0	-246.6	0.97	-0.97	
3,325.0	5.98	291.84	3,311.2	82.9	-261.0	-256.3	0.94	-0.93	
3,419.0	5.14	291.49	3,404.8	86.2	-269.4	-264.5	0.89	-0.89	
3,513.0	4.18	293.07	3,498.4	89.1	-276.5	-271.4	1.03	-1.02	
3,608.0	4.92	286.22	3,593.1	91.6	-283.6	-278.4	0.97	0.78	
3,702.0	4.04	286.04	3,686.9	93.6	-290.6	-285.3	0.94	-0.94	
3,797.0	5.05	291.84	3,781.6	96.1	-297.7	-292.3	1.17	1.06	
3,892.0	4.22	303.53	3,876.3	99.6	-304.5	-298.9	1.32	-0.87	
3,987.0	4.22	299.58	3,971.0	103.3	-310.5	-304.6	0.31	0.00	
4,081.0	5.19	297.11	4,064.7	106.9	-317.3	-311.2	1.05	1.03	
4,176.0	7.38	285.16	4,159.1	110.5	-327.0	-320.8	2.67	2.31	
4,270.0	7.25	286.48	4,252.3	113.7	-338.5	-332.1	0.23	-0.14	
4,364.0	5.85	290.96	4,345.7	117.1	-348.7	-342.1	1.58	-1.49	
4,459.0	4.97	278.92	4,440.3	119.5	-357.3	-350.5	1.51	-0.93	
4,553.0	4.35	282.35	4,534.0	120.9	-364.8	-357.9	0.72	-0.66	
4,647.0	3.52	295.36	4,627.8	122.9	-370.8	-363.9	1.29	-0.88	
4,742.0	5.05	282.53	4,722.5	125.0	-377.6	-370.5	1.89	1.61	
4,836.0	4.57	284.02	4,816.2	126.9	-385.2	-378.1	0.53	-0.51	
4,930.0	3.96	285.60	4,909.9	128.6	-392.0	-384.7	0.66	-0.65	
5,025.0	4.48	290.26	5,004.7	130.8	-398.6	-391.2	0.66	0.55	
5,120.0	5.36	277.43	5,099.3	132.7	-406.5	-399.0	1.48	0.93	
5,214.0	6.55	268.90	5,192.8	133.1	-416.2	-408.7	1.57	1.27	
5,308.0	6.94	279.01	5,286.2	133.9	-427.2	-419.6	1.33	0.41	
5,403.0	7.25	285.95	5,380.4	136.5	-438.6	-430.9	0.96	0.33	
5,497.0	6.64	277.60	5,473.7	138.8	-449.7	-441.8	1.25	-0.65	
5,591.0	5.45	288.59	5,567.2	140.9	-459.3	-451.3	1.76	-1.27	
5,686.0	5.01	288.50	5,661.8	143.7	-467.6	-459.4	0.46	-0.46	
5,780.0	4.53	288.24	5,755.5	146.2	-475.0	-466.7	0.51	-0.51	
5,875.0	3.96	287.53	5,850.2	148.3	-481.7	-473.2	0.60	-0.60	
5,969.0	3.52	299.22	5,944.0	150.7	-487.3	-478.7	0.93	-0.47	
6,063.0	4.61	293.25	6,037.8	153.6	-493.3	-484.5	1.24	1.16	
6,158.0	5.93	298.26	6,132.4	157.4	-501.1	-492.2	1.47	1.39	

# Survey Report

<b>Company:</b>	Crestone Peak Resources	<b>Local Co-ordinate Reference:</b>	Well MELBON RANCH 4G-17H-M265
<b>Project:</b>	Sec 17 T2N-R65W	<b>TVD Reference:</b>	WELL @ 4979.0ft (Original Well Elev)
<b>Site:</b>	Melbon Ranch Pad	<b>MD Reference:</b>	WELL @ 4979.0ft (Original Well Elev)
<b>Well:</b>	MELBON RANCH 4G-17H-M265	<b>North Reference:</b>	True
<b>Wellbore:</b>	Wellbore #1	<b>Survey Calculation Method:</b>	Minimum Curvature
<b>Design:</b>	FINAL	<b>Database:</b>	USA EDM 5000 Multi Users DB

Survey									
Measured Depth (ft)	Inclination (°)	Azimuth (°)	Vertical Depth (ft)	+N/-S (ft)	+E/-W (ft)	Vertical Section (ft)	Dogleg Rate (°/100ft)	Build Rate (°/100ft)	Formations / Comments
6,252.0	4.53	297.55	6,226.0	161.5	-508.7	-499.5	1.49	-1.49	
6,347.0	2.46	309.07	6,320.8	164.5	-513.6	-504.3	2.29	-2.18	
6,394.0	5.36	48.03	6,367.7	166.6	-512.7	-503.3	13.27	6.17	
6,442.0	11.43	72.38	6,415.2	169.5	-506.5	-496.9	14.39	12.65	
6,489.0	17.14	77.30	6,460.8	172.5	-495.3	-485.6	12.41	12.15	
6,536.0	21.40	82.22	6,505.1	175.1	-480.1	-470.2	9.69	9.06	
6,583.0	23.73	81.43	6,548.5	177.7	-462.2	-452.3	5.00	4.96	
6,630.0	26.10	82.66	6,591.1	180.4	-442.6	-432.5	5.16	5.04	
6,677.0	28.43	85.30	6,632.9	182.7	-421.2	-411.0	5.58	4.96	
6,725.0	29.14	88.99	6,675.0	183.8	-398.1	-387.9	3.99	1.48	
6,772.0	30.94	92.15	6,715.7	183.6	-374.6	-364.5	5.10	3.83	
6,819.0	33.97	90.04	6,755.3	183.1	-349.4	-339.3	6.88	6.45	
6,866.0	37.44	88.46	6,793.5	183.5	-322.0	-311.9	7.64	7.38	
6,914.0	39.86	90.57	6,831.0	183.7	-292.0	-282.0	5.74	5.04	
6,961.0	42.67	89.78	6,866.3	183.6	-261.0	-251.0	6.08	5.98	
7,008.0	45.79	86.70	6,900.0	184.7	-228.2	-218.3	8.06	6.64	
7,055.0	48.91	84.68	6,931.8	187.3	-193.8	-183.7	7.35	6.64	
7,103.0	52.78	84.07	6,962.1	190.9	-156.7	-146.5	8.12	8.06	
7,150.0	55.94	85.47	6,989.5	194.4	-118.7	-108.4	7.15	6.72	
7,197.0	58.27	86.70	7,015.0	197.1	-79.3	-68.9	5.42	4.96	
7,244.0	60.91	87.67	7,038.8	199.1	-38.9	-28.4	5.89	5.62	
7,292.0	63.28	88.81	7,061.3	200.4	3.5	14.0	5.36	4.94	
7,339.0	66.97	88.20	7,081.0	201.5	46.2	56.6	7.94	7.85	
7,386.0	71.24	88.02	7,097.8	202.9	90.0	100.5	9.09	9.09	
7,433.0	74.97	87.85	7,111.5	204.6	135.0	145.5	7.94	7.94	
7,480.0	77.92	87.67	7,122.5	206.4	180.6	191.2	6.29	6.28	
7,543.9	83.56	89.57	7,132.8	207.9	243.6	254.2	9.30	8.83	TPZ - 7543.9' MD (1439 FSL, 460 FWL)
7,575.0	86.31	90.48	7,135.5	207.8	274.6	285.1	9.30	8.84	
7,670.0	86.48	90.66	7,141.5	206.9	369.4	379.7	0.26	0.18	
7,764.0	86.97	87.85	7,146.8	208.1	463.2	473.5	3.03	0.52	
7,859.0	88.02	86.53	7,151.0	212.8	558.0	568.4	1.77	1.11	
7,953.0	87.23	85.74	7,154.9	219.1	651.7	662.3	1.19	-0.84	
8,048.0	87.54	87.67	7,159.2	224.6	746.5	757.2	2.06	0.33	
8,142.0	87.01	87.14	7,163.7	228.8	840.3	851.1	0.80	-0.56	
8,237.0	88.33	88.64	7,167.6	232.3	935.1	946.0	2.10	1.39	
8,331.0	89.34	90.13	7,169.5	233.3	1,029.1	1,039.9	1.91	1.07	
8,426.0	88.55	89.96	7,171.2	233.2	1,124.1	1,134.8	0.85	-0.83	
8,521.0	89.78	90.13	7,172.6	233.2	1,219.1	1,229.6	1.31	1.29	
8,615.0	91.98	90.48	7,171.2	232.7	1,313.1	1,323.4	2.37	2.34	
8,710.0	94.57	88.99	7,165.7	233.1	1,407.9	1,418.2	3.14	2.73	
8,804.0	94.44	87.58	7,158.4	235.9	1,501.6	1,511.8	1.50	-0.14	
8,898.0	93.52	86.53	7,151.8	240.7	1,595.2	1,605.6	1.48	-0.98	
8,992.0	93.52	87.94	7,146.1	245.3	1,688.9	1,699.4	1.50	0.00	
9,087.0	91.71	87.85	7,141.7	248.7	1,783.7	1,794.3	1.91	-1.91	
9,181.0	91.41	87.41	7,139.2	252.6	1,877.6	1,888.3	0.57	-0.32	
9,276.0	91.85	88.99	7,136.5	255.6	1,972.5	1,983.2	1.73	0.46	
9,371.0	91.54	89.78	7,133.7	256.6	2,067.5	2,078.1	0.89	-0.33	
9,466.0	91.41	89.08	7,131.2	257.6	2,162.5	2,173.0	0.75	-0.14	
9,560.0	93.34	89.61	7,127.3	258.6	2,256.4	2,266.8	2.13	2.05	
9,654.0	93.30	88.99	7,121.9	259.8	2,350.2	2,360.6	0.66	-0.04	
9,749.0	93.08	88.37	7,116.6	262.0	2,445.0	2,455.4	0.69	-0.23	
9,843.0	93.03	87.67	7,111.6	265.2	2,538.8	2,549.2	0.75	-0.05	
9,938.0	92.59	88.64	7,106.9	268.3	2,633.7	2,644.1	1.12	-0.46	

## Survey Report

<b>Company:</b>	Crestone Peak Resources	<b>Local Co-ordinate Reference:</b>	Well MELBON RANCH 4G-17H-M265
<b>Project:</b>	Sec 17 T2N-R65W	<b>TVD Reference:</b>	WELL @ 4979.0ft (Original Well Elev)
<b>Site:</b>	Melbon Ranch Pad	<b>MD Reference:</b>	WELL @ 4979.0ft (Original Well Elev)
<b>Well:</b>	MELBON RANCH 4G-17H-M265	<b>North Reference:</b>	True
<b>Wellbore:</b>	Wellbore #1	<b>Survey Calculation Method:</b>	Minimum Curvature
<b>Design:</b>	FINAL	<b>Database:</b>	USA EDM 5000 Multi Users DB

### Survey

Measured Depth (ft)	Inclination (°)	Azimuth (°)	Vertical Depth (ft)	+N/-S (ft)	+E/-W (ft)	Vertical Section (ft)	Dogleg Rate (°/100ft)	Build Rate (°/100ft)	Formations / Comments
10,032.0	92.20	90.40	7,103.0	269.1	2,727.6	2,737.9	1.92	-0.41	
10,126.0	91.63	91.10	7,099.8	267.8	2,821.5	2,831.7	0.96	-0.61	
10,221.0	90.44	92.33	7,098.1	265.0	2,916.5	2,926.3	1.80	-1.25	
10,314.0	90.97	92.15	7,097.0	261.4	3,009.4	3,018.9	0.60	0.57	
10,409.0	91.93	91.28	7,094.6	258.5	3,104.3	3,113.6	1.36	1.01	
10,504.0	89.21	91.98	7,093.6	255.8	3,199.3	3,208.3	2.96	-2.86	
10,598.0	88.81	91.54	7,095.3	252.9	3,293.2	3,301.9	0.63	-0.43	
10,693.0	88.46	91.10	7,097.5	250.7	3,388.1	3,396.6	0.59	-0.37	
10,787.0	87.85	91.01	7,100.5	249.0	3,482.1	3,490.3	0.66	-0.65	
10,881.0	89.03	90.22	7,103.1	248.0	3,576.0	3,584.1	1.51	1.26	
10,976.0	90.44	90.13	7,103.5	247.7	3,671.0	3,679.0	1.49	1.48	
11,071.0	90.35	89.78	7,102.9	247.8	3,766.0	3,773.8	0.38	-0.09	
11,165.0	90.84	89.34	7,101.9	248.5	3,860.0	3,867.7	0.70	0.52	
11,260.0	90.40	88.90	7,100.9	250.0	3,955.0	3,962.7	0.65	-0.46	
11,354.0	91.14	89.43	7,099.6	251.3	4,049.0	4,056.6	0.97	0.79	
11,449.0	91.32	88.81	7,097.6	252.8	4,144.0	4,151.5	0.68	0.19	
11,543.0	91.41	90.66	7,095.3	253.2	4,237.9	4,245.4	1.97	0.10	
11,638.0	91.14	89.96	7,093.2	252.7	4,332.9	4,340.2	0.79	-0.28	
11,732.0	89.69	90.40	7,092.5	252.4	4,426.9	4,434.0	1.61	-1.54	
11,826.0	89.39	91.01	7,093.3	251.3	4,520.9	4,527.8	0.72	-0.32	
11,866.0	89.30	90.66	7,093.8	250.7	4,560.9	4,567.7	0.90	-0.22	LAST SURVEY - 11866.0' MD
11,935.0	89.30	90.66	7,094.6	249.9	4,629.8	4,636.6	0.00	0.00	PTB - 11935.0' MD (1447 FSL, 465 FEL)

## Survey Report

<b>Company:</b>	Crestone Peak Resources	<b>Local Co-ordinate Reference:</b>	Well MELBON RANCH 4G-17H-M265
<b>Project:</b>	Sec 17 T2N-R65W	<b>TVD Reference:</b>	WELL @ 4979.0ft (Original Well Elev)
<b>Site:</b>	Melbon Ranch Pad	<b>MD Reference:</b>	WELL @ 4979.0ft (Original Well Elev)
<b>Well:</b>	MELBON RANCH 4G-17H-M265	<b>North Reference:</b>	True
<b>Wellbore:</b>	Wellbore #1	<b>Survey Calculation Method:</b>	Minimum Curvature
<b>Design:</b>	FINAL	<b>Database:</b>	USA EDM 5000 Multi Users DB

Targets									
Target Name - hit/miss target - Shape	Dip Angle (°)	Dip Dir. (°)	TVD (ft)	+N/-S (ft)	+E/-W (ft)	Northing (ft)	Easting (ft)	Latitude	Longitude
MR 4G 1019' VS - actual wellpath misses target center by 7.5ft at 8310.4ft MD (7169.2 TVD, 233.3 N, 1008.5 E) - Point	0.00	0.00	7,171.0	226.0	1,008.5	1,293,185.51	3,225,630.31	40.135363	-104.693029
MELBON RANCH 4G-1; - actual wellpath misses target center by 11.7ft at 7542.0ft MD (7132.5 TVD, 207.8 N, 241.7 E) - Point	0.00	0.52	7,121.0	207.8	243.6	1,293,160.32	3,224,865.57	40.135313	-104.695765
MELBON RANCH 4G 2; - actual wellpath misses target center by 24.9ft at 9534.6ft MD (7128.7 TVD, 258.4 N, 2231.0 E) - Point	0.00	0.00	7,104.0	255.2	2,230.0	1,293,225.74	3,226,851.47	40.135443	-104.688661
MR 4G 185' VS - actual wellpath misses target center by 28.2ft at 7480.0ft MD (7122.5 TVD, 206.4 N, 180.6 E) - Point	0.00	0.00	7,150.0	206.0	174.5	1,293,157.94	3,224,796.48	40.135308	-104.696012
MELBON RANCH 4G-1; - actual wellpath misses target center by 11.7ft at 11935.0ft MD (7094.6 TVD, 249.9 N, 4629.8 E) - Point	0.00	0.53	7,087.0	242.6	4,635.1	1,293,234.97	3,229,256.58	40.135407	-104.680059
MR 4G 2743' VS - actual wellpath misses target center by 8.2ft at 10037.7ft MD (7102.8 TVD, 269.0 N, 2733.3 E) - Point	0.00	0.00	7,100.0	261.3	2,733.1	1,293,236.43	3,227,354.50	40.135459	-104.686861
MELBON RANCH 4G 3; - actual wellpath misses target center by 12.8ft at 10824.6ft MD (7101.8 TVD, 248.4 N, 3519.7 E) - Point	0.00	0.00	7,089.0	248.4	3,520.0	1,293,230.58	3,228,141.47	40.135423	-104.684047

Design Annotations				
Measured Depth (ft)	Vertical Depth (ft)	Local Coordinates		Comment
		+N/-S (ft)	+E/-W (ft)	
7,543.9	7,132.8	207.9	243.6	TPZ - 7543.9' MD (1439 FSL, 460 FWL)
11,866.0	7,093.8	250.7	4,560.9	LAST SURVEY - 11866.0' MD
11,935.0	7,094.6	249.9	4,629.8	PTB - 11935.0' MD (1447 FSL, 465 FEL)

Checked By: \_\_\_\_\_ Approved By: \_\_\_\_\_ Date: \_\_\_\_\_