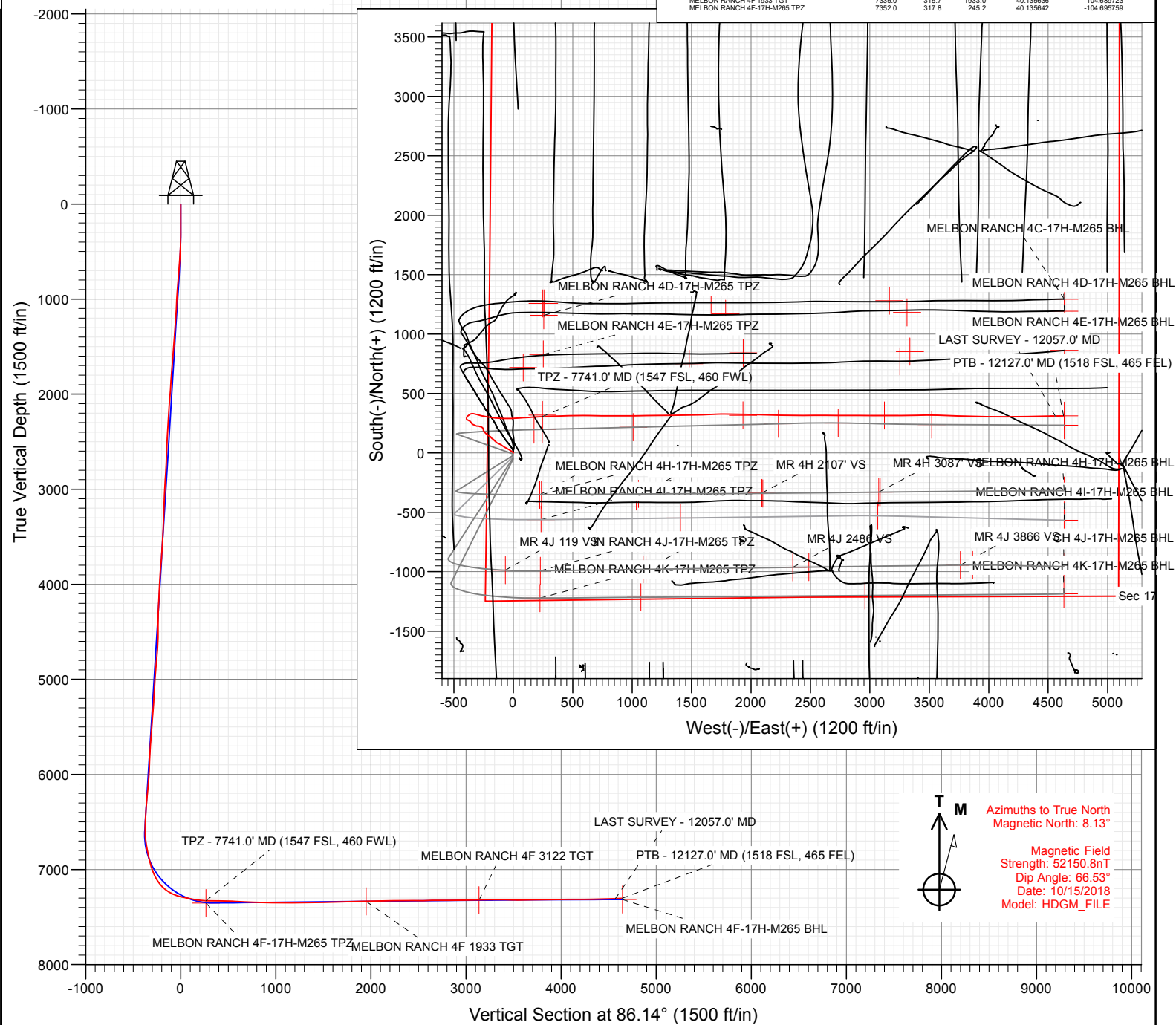


SECTION DETAILS										
Sec	MD	Inc	Azi	TVD	+N/-S	+E/-W	Dleg	TFace	V Sect	Target
1	0.0	0.00	0.00	0.0	0.0	0.0	0.00	0.00	0.0	
2	350.0	0.00	0.00	350.0	0.0	0.0	0.00	0.00	0.0	
3	578.3	4.57	305.36	578.0	5.3	-7.4	2.00	305.36	-7.0	
4	6608.7	4.57	305.36	6589.4	283.1	-398.9	0.00	0.00	-378.9	
5	7787.5	90.58	90.07	7351.2	317.7	323.1	8.00	144.60	343.7	
6	9397.5	90.58	90.07	7335.0	315.7	1933.0	0.00	0.00	1949.9	MELBON RANCH 4F 1933 TGT
7	9400.1	90.63	90.07	7335.0	315.7	1935.6	2.00	-6.50	1952.5	
8	10568.4	90.63	90.07	7322.1	314.3	3103.8	0.00	0.00	3117.9	
9	10586.6	90.27	90.06	7322.0	314.3	3122.0	2.00	-179.82	3136.1	MELBON RANCH 4F 3122 TGT
10	12099.7	90.27	90.06	7315.0	312.6	4635.1	0.00	0.00	4645.7	MELBON RANCH 4F-17H-M265 BHL

FINAL							
MELBON RANCH 4F-17H-M265							
429137 185300							
WELL @ 497.018 (Original Well Elev)							
Ground Level @ 495.6							
North American Datum 1983							
Well MELBON RANCH 4F-17H-M265, True North							
Type User	Target No Target (Freehand)	Azimuth 86.14	Origin Type Slot	N/S 0.0	E/W 0.0	From TVD 0.0	
Name		TVD	+N/S	+E/W	Latitude	Longitude	
MELBON RANCH 4F-17H-M265 BH15		7312.0	312.8	4635.1	43.96272	-104.68528	
MELBON RANCH 4F 3122 TGT		7322.0	314.3	3122.0	43.96362	-104.685470	
MELBON RANCH 4F 3123 TGT		7335.0	315.7	1933.0	43.96366	-104.689723	
MELBON RANCH 4F-17H-M265 TP2		7352.0	317.8	245.2	43.96462	-104.695759	



			4956.0		
+N/-S	+E/-W	Northing	Easting	Latitude	Longitude
0.0	0.0	1292960.35	3224623.87	40.134770	-104.696636





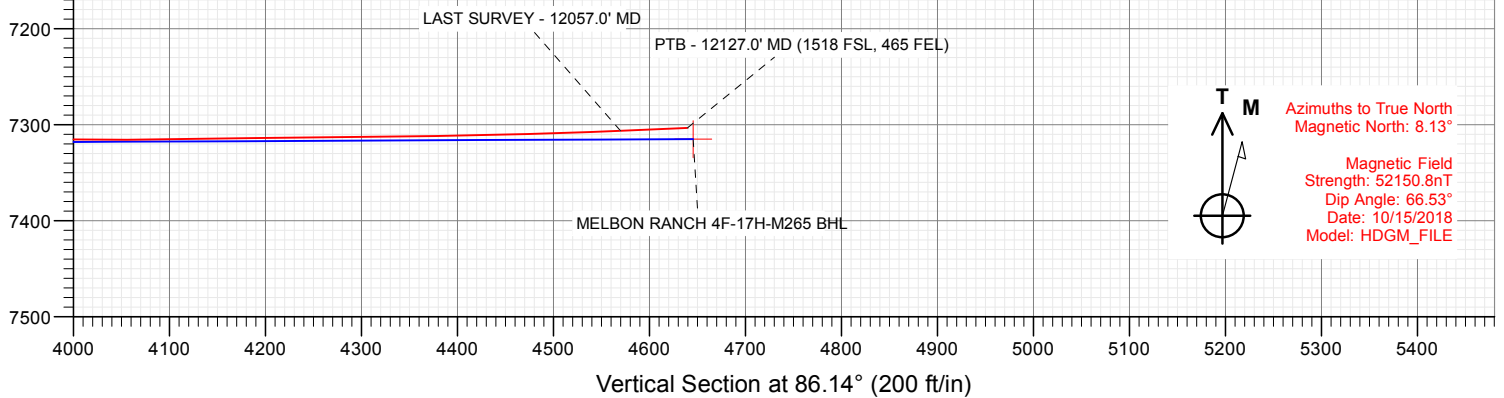
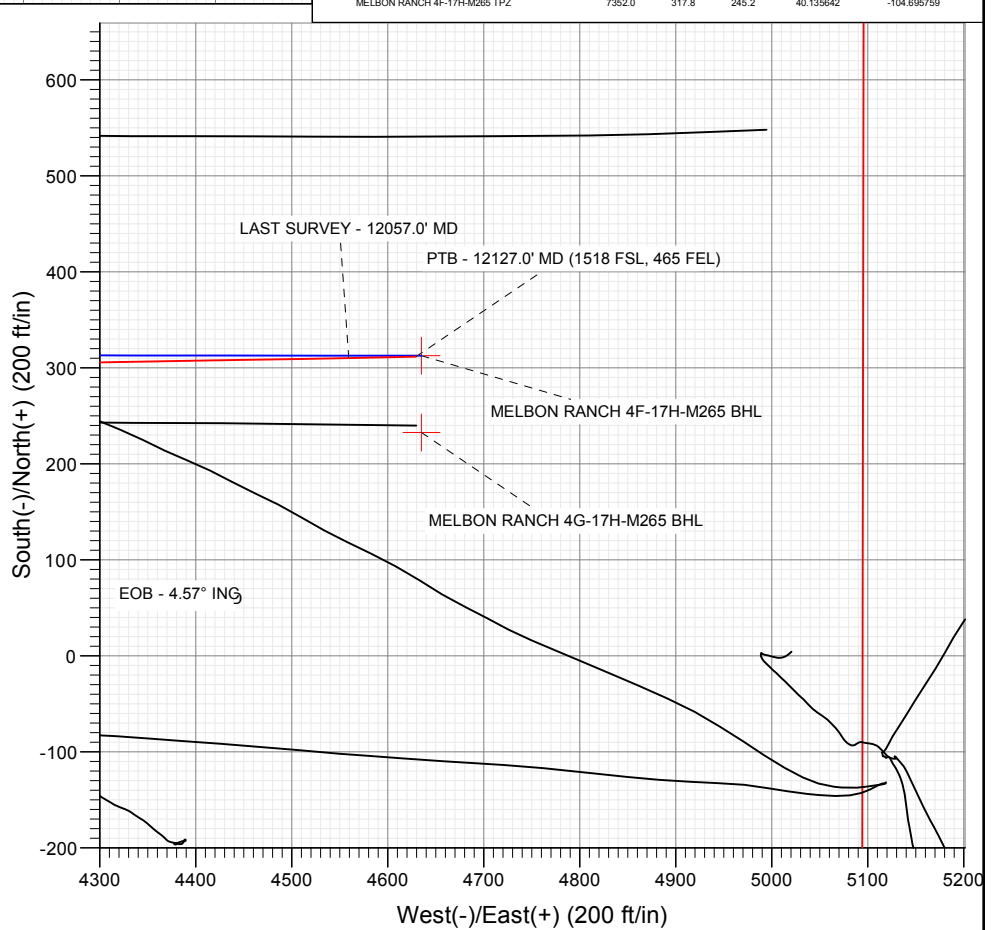
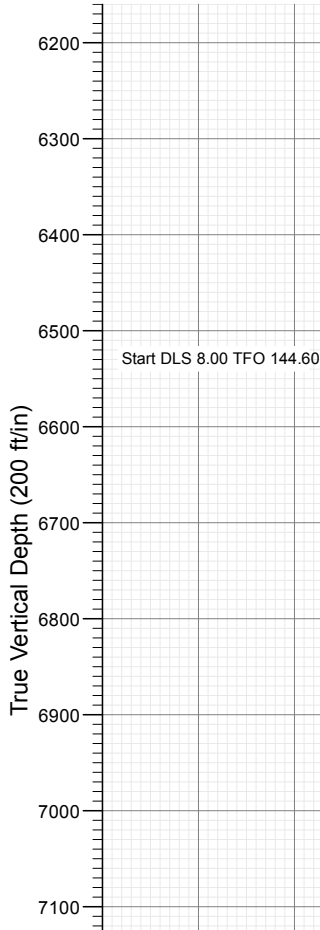
## SECTION DETAILS

Sec	MD	Inc	Azi	TVD	+N/-S	+E/-W	Dleg	TFace	Vsect	Target
1	5943.0	8.82	330.17	5887.6	665.6	-417.1	0.00	0.00	-291.7	
2	6135.5	10.00	80.00	6078.6	681.4	-407.9	8.00	142.03	-279.8	
3	6594.4	10.00	80.00	6530.5	695.3	-329.4	0.00	0.00	-200.1	
4	7579.5	88.69	88.76	7123.4	725.7	359.3	8.00	8.93	482.8	
5	8701.4	88.69	88.76	7149.0	750.0	1480.7	0.00	0.00	1590.0	MELBON RANCH 4E 1590 TGT
6	8872.3	92.02	89.57	7147.9	752.5	1651.6	2.00	13.69	1758.5	
7	10289.1	92.02	89.57	7098.1	763.1	3067.5	0.00	0.00	3153.0	
8	10474.2	90.54	86.18	7094.0	770.0	3252.3	2.00	-113.50	3336.0	MELBON RANCH 4E 3336 TGT
9	11861.0	90.54	86.18	7081.0	862.5	4636.0	0.00	0.00	4713.6	MELBON RANCH 4E-17H-M265 BHL

Project: Sec 17 T2N-R65W  
Site: Melbon Ranch Pad  
Well: MELBON RANCH 4F-17H-M265  
Wellbore: OH  
Design: FINAL

FINAL  
MELBON RANCH 4F-17H-M265  
429157 158330  
WELL @ 4979.0ft (Original Well Elev)  
Ground Level @ 4956.0  
North American Datum 1983  
Well MELBON RANCH 4F-17H-M265, True North

Type User	Target No Target (Freehand)	Azimuth 86.14	Origin Type	S/N 0.0	E/W 0.0	From TVD	
Name		TVD	In/S	+E/-W		Latitude	Longitude
MELBON RANCH 4F-17H-M265 BHL		7315.0	312.6	4635.1	40.135627	-104.686058	
MELBON RANCH 4F 3122 TGT		7322.0	314.3	3122.0	40.135632	-104.685470	
MELBON RANCH 4F 1933 TGT		7335.0	315.7	1933.0	40.135636	-104.689723	
MELBON RANCH 4F-17H-M265 TPZ		7352.0	317.8	245.2	40.135642	-104.695759	



Azimuths to True North  
Magnetic North: 8.13°

Magnetic Field  
Strength: 52150.8nT  
Dip Angle: 66.53°  
Date: 10/15/2018  
Model: HDGM\_FILE

## WELL DETAILS: MELBON RANCH 4F-17H-M265

+N/-S	+E/-W	Northing	Easting	Latitude	Longitude
0.0	0.0	1292960.35	3224623.87	40.134770	-104.696636

CATHEDRAL



## Survey Report

<b>Company:</b>	Crestone Peak Resources	<b>Local Co-ordinate Reference:</b>	Well MELBON RANCH 4F-17H-M265
<b>Project:</b>	Sec 17 T2N-R65W	<b>TVD Reference:</b>	WELL @ 4979.0ft (Original Well Elev)
<b>Site:</b>	Melbon Ranch Pad	<b>MD Reference:</b>	WELL @ 4979.0ft (Original Well Elev)
<b>Well:</b>	MELBON RANCH 4F-17H-M265	<b>North Reference:</b>	True
<b>Wellbore:</b>	OH	<b>Survey Calculation Method:</b>	Minimum Curvature
<b>Design:</b>	FINAL	<b>Database:</b>	USA EDM 5000 Multi Users DB

<b>Project</b>	Sec 17 T2N-R65W, Weld County, CO		
<b>Map System:</b>	US State Plane 1983	<b>System Datum:</b>	Mean Sea Level
<b>Geo Datum:</b>	North American Datum 1983		
<b>Map Zone:</b>	Colorado Northern Zone		

Site		Melbon Ranch Pad			
Site Position:		Northing:	1,292,990.36 ft	Latitude:	40.134852
From:	Map	Easting:	3,224,623.87 ft	Longitude:	-104.696635
Position Uncertainty:	0.0 ft	Slot Radius:	13.200 in	Grid Convergence:	0.52 °

Well	MELBON RANCH 4F-17H-M265					
Well Position	+N/-S	0.0 ft	Northing:	1,292,960.35 ft	Latitude:	40.134770
	+E/-W	0.0 ft	Easting:	3,224,623.87 ft	Longitude:	-104.696636
Position Uncertainty		0.0 ft	Wellhead Elevation:	ft	Ground Level:	4,956.0 ft

<b>Wellbore</b>	OH				
<b>Magnetics</b>	<b>Model Name</b>	<b>Sample Date</b>	<b>Declination (°)</b>	<b>Dip Angle (°)</b>	<b>Field Strength (nT)</b>
	HDGM_FILE	10/15/2018	8.13	66.53	52,150.80000000

<b>Design</b>	FINAL				
<b>Audit Notes:</b>					
<b>Version:</b>	1.0	<b>Phase:</b>	ACTUAL	<b>Tie On Depth:</b>	0.0
<b>Vertical Section:</b>	<b>Depth From (TVD)</b>	<b>+N/-S</b>	<b>+E/-W</b>	<b>Direction</b>	
	(ft)	(ft)	(ft)	(°)	
	0.0	0.0	0.0	86.14	

<b>Survey Program</b>	<b>Date</b>	10/28/2018			
<b>From (ft)</b>	<b>To (ft)</b>	<b>Survey (Wellbore)</b>	<b>Tool Name</b>	<b>Description</b>	
181.0	2,332.0	Survey #1 (OH)	GYRO-MWD	OWSG Gyro MWD	
2,451.0	12,127.0	Survey #2 (OH)	MWD+HDGM	OWSG MWD + HDGM	

<b>Survey</b>										
<b>Measured Depth (ft)</b>	<b>Inclination (°)</b>	<b>Azimuth (°)</b>	<b>Vertical Depth (ft)</b>	<b>+N/-S (ft)</b>	<b>+E/-W (ft)</b>	<b>Vertical Section (ft)</b>	<b>Dogleg Rate (°/100ft)</b>	<b>Build Rate (°/100ft)</b>	<b>Formations / Comments</b>	
0.0	0.00	0.00	0.0	0.0	0.0	0.0	0.00	0.00		
181.0	0.26	352.35	181.0	0.4	-0.1	0.0	0.14	0.14		
275.0	0.70	338.82	275.0	1.2	-0.3	-0.2	0.48	0.47		
369.0	2.20	313.51	369.0	2.9	-1.8	-1.6	1.70	1.60		
443.0	2.90	312.33	442.9	5.2	-4.2	-3.9	0.95	0.95		
537.0	4.22	306.97	536.7	8.9	-8.7	-8.1	1.45	1.40		
632.0	5.14	306.12	631.4	13.5	-15.0	-14.0	0.97	0.97		
726.0	5.99	304.08	724.9	18.7	-22.4	-21.1	0.93	0.90		
820.0	5.85	300.24	818.4	23.9	-30.6	-29.0	0.45	-0.15		
915.0	4.42	303.41	913.1	28.3	-37.9	-35.9	1.53	-1.51		
1,010.0	4.11	298.35	1,007.8	31.9	-43.9	-41.7	0.51	-0.33		
1,104.0	4.13	299.60	1,101.6	35.2	-49.8	-47.4	0.10	0.02		

## Survey Report

<b>Company:</b>	Crestone Peak Resources	<b>Local Co-ordinate Reference:</b>	Well MELBON RANCH 4F-17H-M265
<b>Project:</b>	Sec 17 T2N-R65W	<b>TVD Reference:</b>	WELL @ 4979.0ft (Original Well Elev)
<b>Site:</b>	Melbon Ranch Pad	<b>MD Reference:</b>	WELL @ 4979.0ft (Original Well Elev)
<b>Well:</b>	MELBON RANCH 4F-17H-M265	<b>North Reference:</b>	True
<b>Wellbore:</b>	OH	<b>Survey Calculation Method:</b>	Minimum Curvature
<b>Design:</b>	FINAL	<b>Database:</b>	USA EDM 5000 Multi Users DB

### Survey

Measured Depth (ft)	Inclination (°)	Azimuth (°)	Vertical Depth (ft)	+N/-S (ft)	+E/-W (ft)	Vertical Section (ft)	Dogleg Rate (°/100ft)	Build Rate (°/100ft)	Formations / Comments
1,198.0	4.29	300.82	1,195.3	38.7	-55.8	-53.1	0.20	0.17	
1,293.0	4.68	298.35	1,290.0	42.3	-62.3	-59.3	0.46	0.41	
1,387.0	5.47	293.06	1,383.6	45.9	-69.8	-66.5	0.98	0.84	
1,481.0	4.79	302.72	1,477.3	49.8	-77.2	-73.7	1.17	-0.72	
1,576.0	5.09	306.34	1,571.9	54.4	-83.9	-80.1	0.46	0.32	
1,670.0	6.27	306.59	1,665.5	60.0	-91.4	-87.1	1.26	1.26	
1,765.0	6.03	302.63	1,759.9	65.8	-99.8	-95.1	0.51	-0.25	
1,860.0	4.48	298.28	1,854.5	70.2	-107.2	-102.3	1.68	-1.63	
1,954.0	4.36	293.68	1,948.2	73.4	-113.7	-108.5	0.40	-0.13	
2,049.0	4.84	291.17	2,042.9	76.3	-120.8	-115.4	0.55	0.51	
2,143.0	4.82	292.23	2,136.6	79.2	-128.1	-122.5	0.10	-0.02	
2,238.0	4.63	303.41	2,231.3	82.8	-135.0	-129.1	0.99	-0.20	
2,332.0	4.47	307.68	2,325.0	87.1	-141.1	-134.9	0.40	-0.17	
2,451.0	4.31	316.11	2,443.6	93.2	-147.9	-141.3	0.56	-0.13	
2,545.0	4.04	313.12	2,537.4	98.0	-152.7	-145.8	0.37	-0.29	
2,639.0	3.47	309.61	2,631.2	102.1	-157.3	-150.1	0.65	-0.61	
2,734.0	3.87	322.26	2,726.0	106.5	-161.5	-154.0	0.95	0.42	
2,829.0	4.40	309.17	2,820.7	111.3	-166.3	-158.4	1.14	0.56	
2,923.0	4.26	308.90	2,914.5	115.8	-171.8	-163.6	0.15	-0.15	
3,028.0	3.91	306.97	3,019.2	120.4	-177.7	-169.2	0.36	-0.33	
3,123.0	3.43	304.77	3,114.0	123.9	-182.6	-173.9	0.53	-0.51	
3,217.0	3.96	325.95	3,207.8	128.2	-186.8	-177.7	1.55	0.56	
3,312.0	3.56	326.74	3,302.6	133.4	-190.2	-180.8	0.42	-0.42	
3,406.0	2.81	302.49	3,396.5	137.1	-193.8	-184.1	1.62	-0.80	
3,501.0	3.87	299.06	3,491.3	139.9	-198.5	-188.7	1.13	1.12	
3,595.0	4.48	303.89	3,585.1	143.5	-204.3	-194.2	0.75	0.65	
3,690.0	4.66	310.57	3,679.8	148.1	-210.4	-199.9	0.59	0.19	
3,785.0	6.24	303.72	3,774.3	153.4	-217.6	-206.8	1.80	1.66	
3,879.0	6.15	307.85	3,867.8	159.4	-225.8	-214.6	0.48	-0.10	
3,974.0	5.10	311.63	3,962.3	165.3	-233.0	-221.3	1.17	-1.11	
4,068.0	4.22	316.99	4,056.0	170.6	-238.5	-226.4	1.04	-0.94	
4,163.0	3.91	319.01	4,150.8	175.6	-243.0	-230.6	0.36	-0.33	
4,257.0	4.22	326.48	4,244.5	180.9	-247.0	-234.3	0.65	0.33	
4,351.0	3.69	337.55	4,338.3	186.6	-250.1	-236.9	0.99	-0.56	
4,446.0	3.21	352.85	4,433.1	192.1	-251.6	-238.1	1.09	-0.51	
4,540.0	5.89	352.14	4,526.8	199.4	-252.5	-238.5	2.85	2.85	
4,635.0	5.63	325.87	4,621.4	208.1	-255.8	-241.2	2.76	-0.27	
4,729.0	5.63	299.15	4,714.9	214.2	-262.4	-247.4	2.76	0.00	
4,823.0	6.02	296.60	4,808.4	218.6	-270.9	-255.5	0.50	0.41	
4,917.0	5.10	280.16	4,902.0	221.6	-279.4	-263.8	1.95	-0.98	
5,012.0	4.04	288.78	4,996.7	223.4	-286.7	-271.0	1.33	-1.12	
5,107.0	3.47	282.18	5,091.5	225.1	-292.7	-276.9	0.75	-0.60	
5,202.0	2.81	258.98	5,186.4	225.3	-297.8	-282.0	1.49	-0.69	
5,296.0	4.66	273.66	5,280.2	225.1	-303.9	-288.0	2.20	1.97	
5,390.0	4.61	288.69	5,373.9	226.5	-311.3	-295.3	1.29	-0.05	
5,484.0	5.49	297.39	5,467.5	229.8	-318.8	-302.6	1.24	0.94	
5,578.0	5.10	294.58	5,561.1	233.6	-326.6	-310.2	0.50	-0.41	
5,673.0	4.44	293.35	5,655.8	236.8	-333.8	-317.1	0.70	-0.69	
5,767.0	3.47	290.27	5,749.5	239.2	-339.8	-323.0	1.06	-1.03	
5,862.0	3.34	305.12	5,844.4	241.8	-344.8	-327.7	0.94	-0.14	
5,956.0	5.01	327.62	5,938.1	246.9	-349.2	-331.8	2.46	1.78	
6,050.0	6.50	325.16	6,031.7	254.7	-354.5	-336.5	1.61	1.59	
6,145.0	7.43	315.85	6,126.0	263.5	-361.8	-343.3	1.54	0.98	

# Survey Report

<b>Company:</b>	Crestone Peak Resources	<b>Local Co-ordinate Reference:</b>	Well MELBON RANCH 4F-17H-M265
<b>Project:</b>	Sec 17 T2N-R65W	<b>TVD Reference:</b>	WELL @ 4979.0ft (Original Well Elev)
<b>Site:</b>	Melbon Ranch Pad	<b>MD Reference:</b>	WELL @ 4979.0ft (Original Well Elev)
<b>Well:</b>	MELBON RANCH 4F-17H-M265	<b>North Reference:</b>	True
<b>Wellbore:</b>	OH	<b>Survey Calculation Method:</b>	Minimum Curvature
<b>Design:</b>	FINAL	<b>Database:</b>	USA EDM 5000 Multi Users DB

Survey									
Measured Depth (ft)	Inclination (°)	Azimuth (°)	Vertical Depth (ft)	+N/-S (ft)	+E/-W (ft)	Vertical Section (ft)	Dogleg Rate (°/100ft)	Build Rate (°/100ft)	Formations / Comments
6,240.0	6.90	296.07	6,220.2	270.4	-371.2	-352.2	2.64	-0.56	
6,334.0	5.27	293.87	6,313.7	274.7	-380.3	-360.9	1.75	-1.73	
6,429.0	3.69	293.08	6,408.4	277.6	-387.1	-367.5	1.66	-1.66	
6,523.0	3.03	321.12	6,502.2	280.8	-391.4	-371.6	1.86	-0.70	
6,570.0	4.00	330.00	6,549.2	283.1	-393.0	-373.0	2.36	2.06	
6,618.0	4.88	342.48	6,597.0	286.5	-394.5	-374.3	2.71	1.83	
6,665.0	9.49	11.92	6,643.6	292.2	-394.3	-373.7	12.25	9.81	
6,712.0	13.14	26.51	6,689.7	300.8	-391.1	-369.9	9.81	7.77	
6,759.0	13.14	46.99	6,735.5	309.2	-384.8	-363.1	9.86	0.00	
6,806.0	13.54	53.49	6,781.3	316.2	-376.4	-354.3	3.30	0.85	
6,853.0	13.76	54.37	6,826.9	322.7	-367.5	-344.9	0.64	0.47	
6,901.0	12.70	69.66	6,873.7	327.9	-357.9	-335.0	7.59	-2.21	
6,996.0	16.48	96.29	6,965.7	330.0	-334.7	-311.7	8.00	3.98	
7,043.0	21.31	107.11	7,010.2	326.8	-319.9	-297.1	12.66	10.28	
7,090.0	26.02	108.34	7,053.2	321.0	-301.9	-279.6	10.08	10.02	
7,103.0	27.38	106.75	7,064.8	319.2	-296.3	-274.2	11.80	10.45	
7,134.0	30.63	103.15	7,091.9	315.4	-281.8	-259.9	11.90	10.48	
7,165.0	33.71	101.48	7,118.2	311.9	-265.7	-244.1	10.34	9.94	
7,197.0	38.15	101.74	7,144.1	308.1	-247.3	-226.0	13.89	13.88	
7,244.0	45.35	99.99	7,179.1	302.2	-216.6	-195.7	15.51	15.31	
7,291.0	52.03	97.88	7,210.1	296.8	-181.7	-161.3	14.61	14.21	
7,338.0	58.89	95.24	7,236.8	292.4	-143.3	-123.3	15.31	14.60	
7,385.0	65.48	92.08	7,258.7	289.8	-101.8	-82.1	15.23	14.02	
7,432.0	71.76	90.41	7,275.8	288.9	-58.1	-38.5	13.76	13.36	
7,480.0	77.92	88.03	7,288.4	289.5	-11.8	7.7	13.70	12.83	
7,527.0	79.50	86.36	7,297.6	291.8	34.2	53.8	4.84	3.36	
7,574.0	79.50	85.92	7,306.1	294.9	80.3	100.0	0.92	0.00	
7,621.0	79.50	86.28	7,314.7	298.0	126.4	146.2	0.75	0.00	
7,669.0	81.91	86.01	7,322.4	301.2	173.7	193.6	5.05	5.02	
7,716.0	86.22	86.54	7,327.3	304.2	220.3	240.3	9.24	9.17	
7,741.0	87.55	87.05	7,328.7	305.6	245.2	265.3	5.68	5.31	TPZ - 7741.0' MD (1547 FSL, 460 FWL)
7,764.0	88.77	87.51	7,329.4	306.7	268.2	288.3	5.68	5.31	
7,858.0	90.70	88.21	7,329.8	310.2	362.2	382.2	2.18	2.05	
7,953.0	88.42	88.74	7,330.6	312.8	457.1	477.1	2.46	-2.40	
8,047.0	86.48	90.14	7,334.7	313.7	551.0	570.9	2.54	-2.06	
8,142.0	87.10	90.49	7,340.1	313.2	645.9	665.5	0.75	0.65	
8,236.0	87.80	89.97	7,344.2	312.8	739.8	759.1	0.93	0.74	
8,330.0	88.55	90.49	7,347.2	312.4	833.7	852.9	0.97	0.80	
8,425.0	89.17	89.88	7,349.1	312.1	928.7	947.6	0.92	0.65	
8,519.0	89.69	89.70	7,350.1	312.4	1,022.7	1,041.4	0.59	0.55	
8,614.0	89.91	89.44	7,350.4	313.2	1,117.7	1,136.2	0.36	0.23	
8,708.0	90.66	89.09	7,349.9	314.4	1,211.7	1,230.1	0.88	0.80	
8,803.0	90.92	89.09	7,348.6	315.9	1,306.7	1,325.0	0.27	0.27	
8,897.0	91.32	89.35	7,346.8	317.2	1,400.6	1,418.8	0.51	0.43	
8,991.0	91.54	89.35	7,344.4	318.2	1,494.6	1,512.6	0.23	0.23	
9,086.0	91.71	88.12	7,341.7	320.3	1,589.5	1,607.5	1.31	0.18	
9,180.0	92.20	87.33	7,338.5	324.0	1,683.4	1,701.4	0.99	0.52	
9,275.0	91.10	89.35	7,335.8	326.8	1,778.3	1,796.3	2.42	-1.16	
9,369.0	90.70	90.58	7,334.3	326.9	1,872.3	1,890.1	1.38	-0.43	
9,464.0	91.14	92.60	7,332.8	324.2	1,967.2	1,984.6	2.18	0.46	
9,558.0	91.36	92.43	7,330.7	320.1	2,061.1	2,078.0	0.30	0.23	
9,653.0	91.01	89.79	7,328.8	318.3	2,156.1	2,172.6	2.80	-0.37	
9,748.0	90.00	91.72	7,327.9	317.0	2,251.1	2,267.3	2.29	-1.06	

## Survey Report

<b>Company:</b>	Crestone Peak Resources	<b>Local Co-ordinate Reference:</b>	Well MELBON RANCH 4F-17H-M265
<b>Project:</b>	Sec 17 T2N-R65W	<b>TVD Reference:</b>	WELL @ 4979.0ft (Original Well Elev)
<b>Site:</b>	Melbon Ranch Pad	<b>MD Reference:</b>	WELL @ 4979.0ft (Original Well Elev)
<b>Well:</b>	MELBON RANCH 4F-17H-M265	<b>North Reference:</b>	True
<b>Wellbore:</b>	OH	<b>Survey Calculation Method:</b>	Minimum Curvature
<b>Design:</b>	FINAL	<b>Database:</b>	USA EDM 5000 Multi Users DB

### Survey

Measured Depth (ft)	Inclination (°)	Azimuth (°)	Vertical Depth (ft)	+N/-S (ft)	+E/-W (ft)	Vertical Section (ft)	Dogleg Rate (°/100ft)	Build Rate (°/100ft)	Formations / Comments
9,842.0	89.78	90.14	7,328.1	315.5	2,345.1	2,361.0	1.70	-0.23	
9,936.0	90.40	90.14	7,328.0	315.2	2,439.1	2,454.7	0.66	0.66	
10,031.0	91.36	89.70	7,326.5	315.4	2,534.0	2,549.5	1.11	1.01	
10,125.0	91.19	90.41	7,324.4	315.3	2,628.0	2,643.3	0.78	-0.18	
10,219.0	89.69	89.97	7,323.7	315.0	2,722.0	2,737.0	1.66	-1.60	
10,313.0	90.13	90.32	7,323.8	314.7	2,816.0	2,830.8	0.60	0.47	
10,408.0	90.75	90.41	7,323.1	314.1	2,911.0	2,925.5	0.66	0.65	
10,502.0	91.58	90.32	7,321.2	313.5	3,005.0	3,019.3	0.89	0.88	
10,597.0	90.79	89.97	7,319.2	313.3	3,100.0	3,114.0	0.91	-0.83	
10,691.0	91.36	90.14	7,317.5	313.2	3,193.9	3,207.8	0.63	0.61	
10,786.0	89.03	88.82	7,317.2	314.1	3,288.9	3,302.6	2.82	-2.45	
10,880.0	89.25	88.65	7,318.6	316.1	3,382.9	3,396.5	0.30	0.23	
10,975.0	88.90	89.18	7,320.1	317.9	3,477.9	3,491.4	0.67	-0.37	
11,069.0	90.26	91.99	7,320.8	317.0	3,571.9	3,585.1	3.32	1.45	
11,164.0	91.19	91.99	7,319.6	313.7	3,666.8	3,679.6	0.98	0.98	
11,258.0	92.07	92.25	7,316.9	310.2	3,760.7	3,773.0	0.98	0.94	
11,353.0	90.18	91.81	7,315.0	306.8	3,855.6	3,867.5	2.04	-1.99	
11,448.0	89.43	90.23	7,315.4	305.1	3,950.6	3,962.2	1.84	-0.79	
11,542.0	90.26	90.41	7,315.6	304.6	4,044.6	4,055.9	0.90	0.88	
11,636.0	91.27	90.41	7,314.4	304.0	4,138.6	4,149.6	1.07	1.07	
11,731.0	90.13	88.91	7,313.2	304.5	4,233.6	4,244.4	1.98	-1.20	
11,825.0	90.75	88.82	7,312.5	306.4	4,327.5	4,338.3	0.67	0.66	
11,919.0	91.36	89.26	7,310.8	308.0	4,421.5	4,432.2	0.80	0.65	
12,014.0	92.07	88.82	7,307.9	309.5	4,516.4	4,527.0	0.88	0.75	
12,057.0	92.42	88.91	7,306.2	310.4	4,559.4	4,569.9	0.84	0.81	LAST SURVEY - 12057.0' MD
12,127.0	92.42	88.91	7,303.3	311.7	4,629.3	4,639.8	0.00	0.00	PTB - 12127.0' MD (1518 FSL, 465 FEL)

## Survey Report

<b>Company:</b>	Crestone Peak Resources	<b>Local Co-ordinate Reference:</b>	Well MELBON RANCH 4F-17H-M265
<b>Project:</b>	Sec 17 T2N-R65W	<b>TVD Reference:</b>	WELL @ 4979.0ft (Original Well Elev)
<b>Site:</b>	Melbon Ranch Pad	<b>MD Reference:</b>	WELL @ 4979.0ft (Original Well Elev)
<b>Well:</b>	MELBON RANCH 4F-17H-M265	<b>North Reference:</b>	True
<b>Wellbore:</b>	OH	<b>Survey Calculation Method:</b>	Minimum Curvature
<b>Design:</b>	FINAL	<b>Database:</b>	USA EDM 5000 Multi Users DB

Targets									
Target Name	Dip Angle	Dip Dir.	TVD	+N/-S	+E/-W	Northing	Easting	Latitude	Longitude
- hit/miss target	(°)	(°)	(ft)	(ft)	(ft)	(ft)	(ft)		
- Shape									
MELBON RANCH 4F 19	0.00	0.00	7,335.0	315.7	1,933.0	1,293,293.52	3,226,553.93	40.135636	-104.689723
- actual wellpath misses target center by 10.0ft at 9430.0ft MD (7333.4 TVD, 325.5 N, 1933.2 E)									
- Point									
MELBON RANCH 4F-17	0.00	0.52	7,352.0	317.8	245.2	1,293,280.33	3,224,866.14	40.135642	-104.695759
- actual wellpath misses target center by 26.3ft at 7742.2ft MD (7328.7 TVD, 305.7 N, 246.5 E)									
- Point									
MELBON RANCH 4F-17	0.00	0.53	7,315.0	312.6	4,635.1	1,293,314.95	3,229,255.98	40.135627	-104.680058
- actual wellpath misses target center by 13.1ft at 12127.0ft MD (7303.3 TVD, 311.7 N, 4629.3 E)									
- Point									
MELBON RANCH 4F 31	0.00	0.00	7,322.0	314.3	3,122.0	1,293,302.93	3,227,742.89	40.135632	-104.685470
- actual wellpath misses target center by 3.2ft at 10619.0ft MD (7318.9 TVD, 313.3 N, 3121.9 E)									
- Point									

Design Annotations					
Measured Depth	Vertical Depth	Local Coordinates			
(ft)	(ft)	+N/-S (ft)	+E/-W (ft)	Comment	
7,741.0	7,328.7	305.6	245.2	TPZ - 7741.0' MD (1547 FSL, 460 FWL)	
12,057.0	7,306.2	310.4	4,559.4	LAST SURVEY - 12057.0' MD	
12,127.0	7,303.3	311.7	4,629.3	PTB - 12127.0' MD (1518 FSL, 465 FEL)	

Checked By: \_\_\_\_\_ Approved By: \_\_\_\_\_ Date: \_\_\_\_\_