



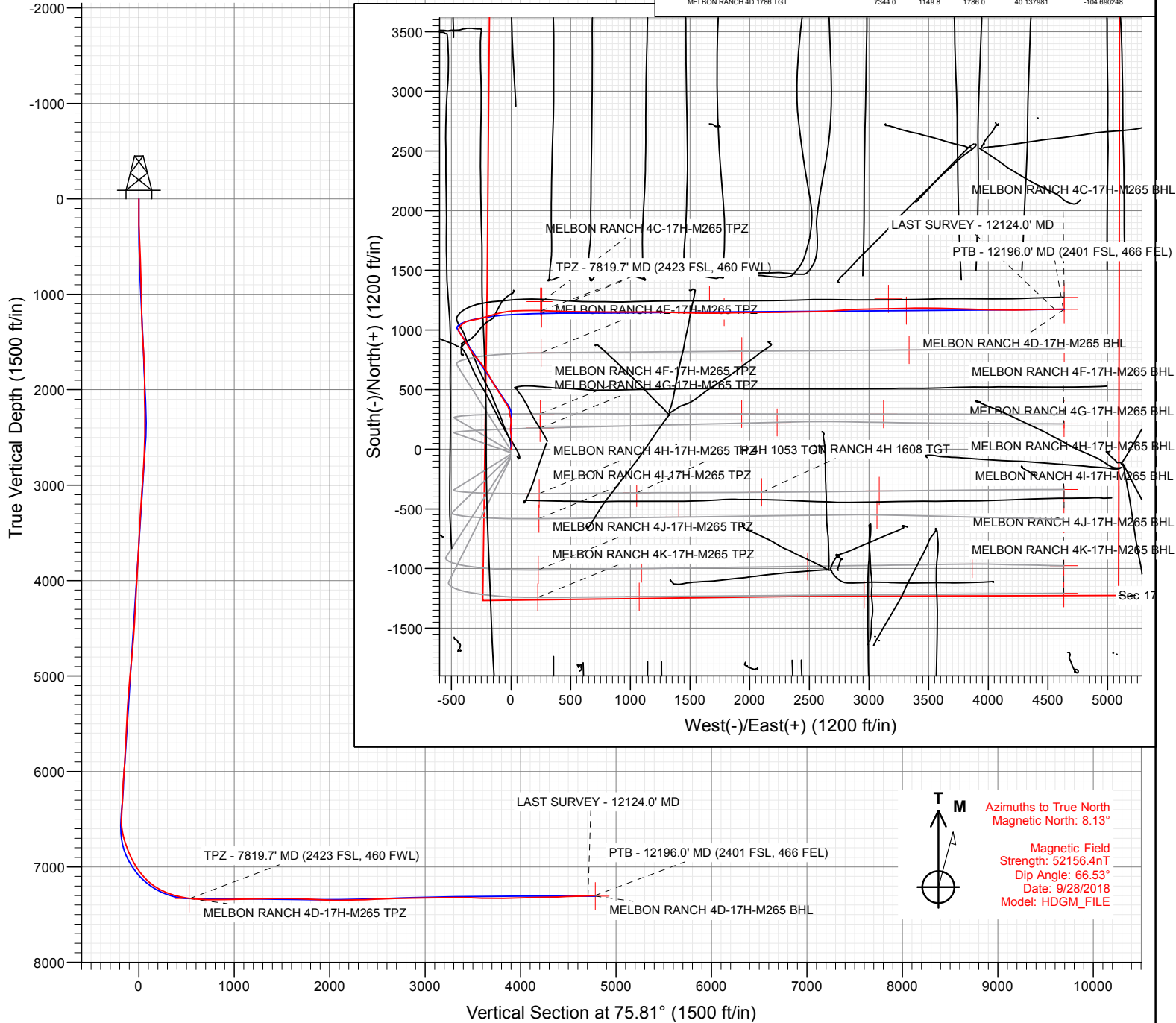
Project: Sec 17 T2N-R65W
 Site: Melbon Ranch Pad
 Well: MELBON RANCH 4D-17H-M265
 Wellbore: Wellbore #1
 Design: FINAL

SECTION DETAILS

Sec	MD	Inc	Azi	TVD	+N/-S	+E/-W	Dleg	TFace	Vsect	Target
1	0.0	0.00	0.00	0.0	0.0	0.0	0.00	0.00	0.0	
2	250.0	0.00	0.00	250.0	0.0	0.0	0.00	0.00	0.0	
3	750.0	10.00	0.00	747.5	43.5	0.0	2.00	0.00	10.7	
4	2250.0	10.00	0.00	2224.7	304.0	0.0	0.00	0.00	74.5	
5	2555.5	10.99	326.41	2525.3	354.8	-16.1	2.00	-97.56	71.3	
6	6655.7	10.99	326.41	6550.3	1006.2	-448.7	0.00	0.00	-188.4	
7	7849.5	89.51	89.55	7331.0	1137.8	256.5	8.00	122.73	527.6	MELBON RANCH 4D-17H-M265 TPZ
8	9379.0	89.51	89.55	7344.0	1149.8	1786.0	0.00	0.00	2013.4	MELBON RANCH 4D 1786 TGT
9	9475.5	91.44	89.55	7343.2	1150.6	1882.5	2.00	0.00	2107.1	
10	10837.7	91.44	89.55	7308.9	1161.4	3244.2	0.00	0.00	3429.9	
11	10905.5	90.09	89.55	7308.0	1161.9	3312.0	2.00	180.00	3495.8	MELBON RANCH 4D 3312 TGT
12	12229.9	90.09	89.55	7306.0	1172.4	4636.3	0.00	0.00	4782.2	MELBON RANCH 4D-17H-M265 BHL

FINAL
 MELBON RANCH 4D-17H-M265
 423357 185200
 WELL @ 4979.0ft (Original Well Elev)
 Ground Level @ 4956.0
 North American Datum 1983
 Well MELBON RANCH 4D-17H-M265, True North

Type	Target	Azimuth	Origin Type	N/S	E/W	From TVD
User	No Target (Freehand)	Slot				
Name		TVD	+N/-S	+E/-W	Latitude	Longitude
MELBON RANCH 4D-17H-M265 BHL		7306.0	1172.4	4636.3	40.138042	-104.696033
MELBON RANCH 4D 3312 TGT		7308.0	1161.9	3312.0	40.138014	-104.684789
MELBON RANCH 4D-17H-M265 TPZ		7331.0	1137.8	256.5	40.137948	-104.695718
MELBON RANCH 4D 1786 TGT		7344.0	1149.8	1786.0	40.137981	-104.690248



Azimuths to True North
 Magnetic North: 8.13°
 Magnetic Field
 Strength: 52156.4nT
 Dip Angle: 66.53°
 Date: 9/28/2018
 Model: HDGM_FILE



WELL DETAILS: MELBON RANCH 4D-17H-M265

+N/-S	+E/-W	Northing	Easting	Latitude	Longitude
0.0	0.0	1292980.36	3224623.87	40.134825	-104.696636





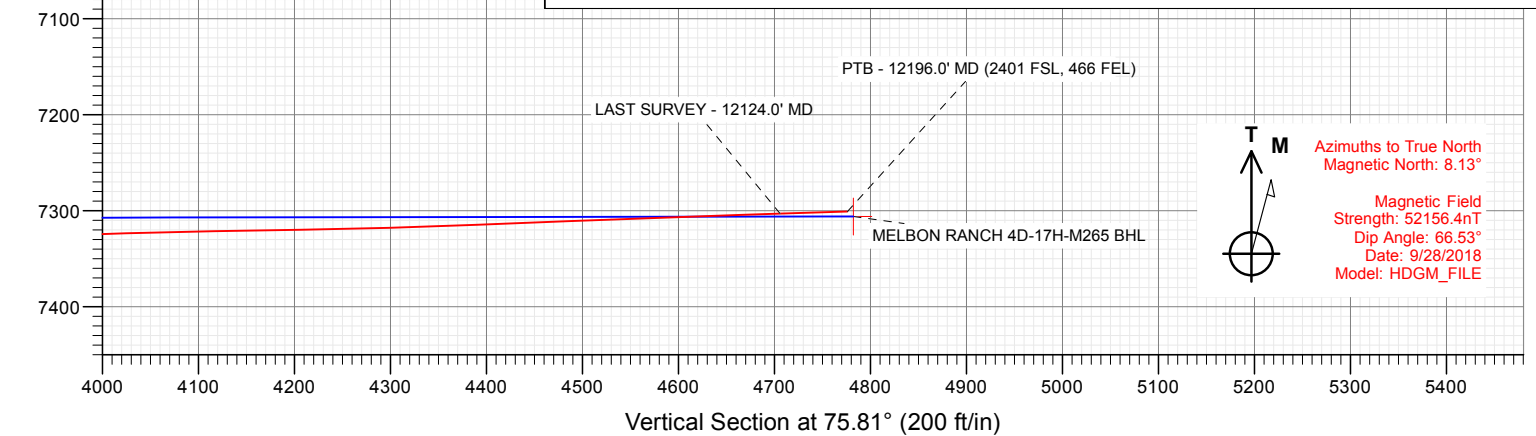
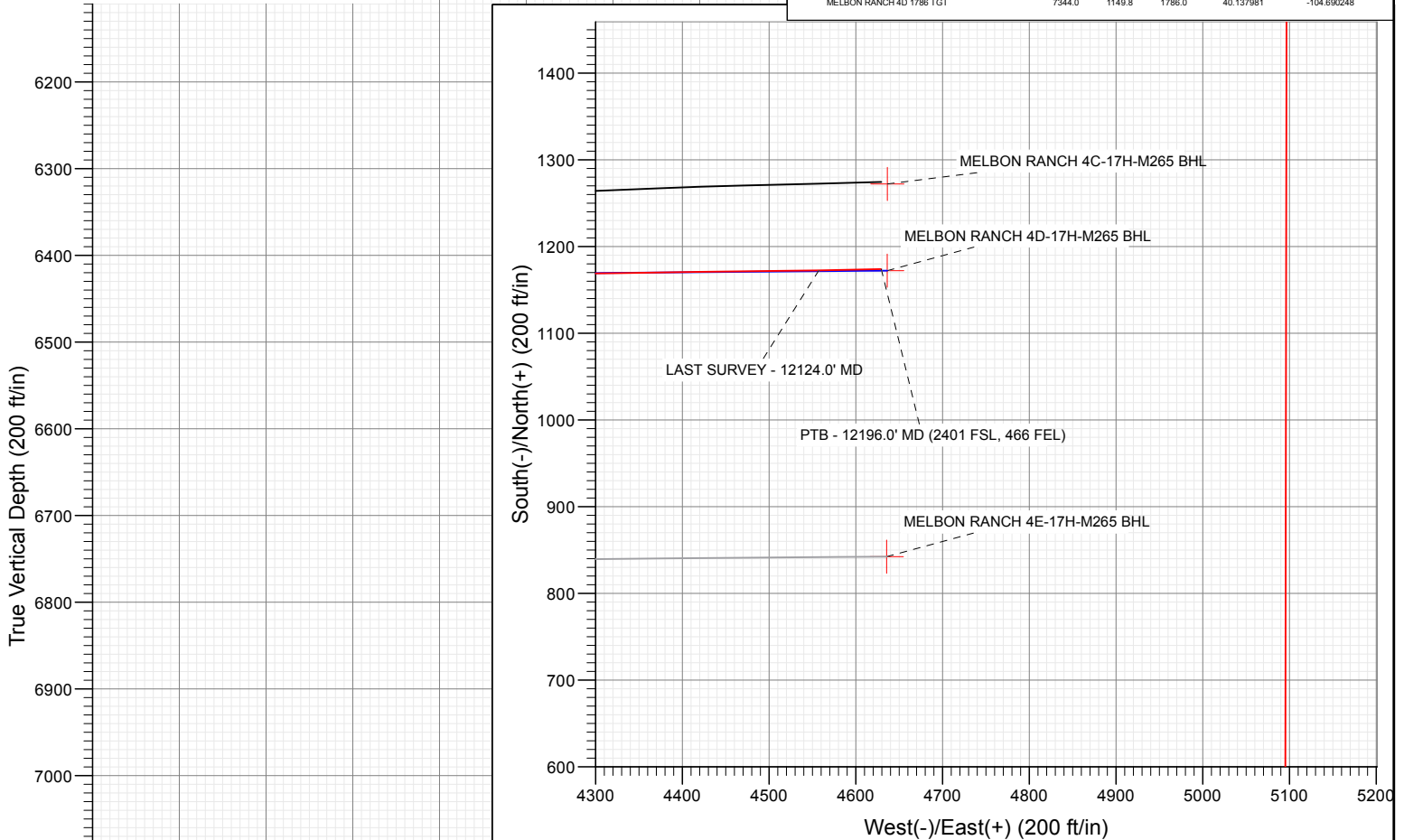
SECTION DETAILS

Sec	MD	Inc	Azi	TVD	+N/-S	+E/-W	Dleg	TFace	VSec	Target
1	0.0	0.00	0.00	0.0	0.0	0.0	0.00	0.00	0.0	
2	250.0	0.00	0.00	250.0	0.0	0.0	0.00	0.00	0.0	
3	750.0	10.00	0.00	747.5	43.5	0.0	2.00	0.00	10.7	
4	2250.0	10.00	0.00	2224.7	304.0	0.0	0.00	0.00	74.5	
5	2555.5	10.99	326.41	2525.3	354.8	-16.1	2.00	-97.56	71.3	
6	6655.7	10.99	326.41	6550.3	1006.2	-448.7	0.00	0.00	-188.4	
7	7849.5	89.51	89.55	7331.0	1137.8	256.5	8.00	122.73	527.6	MELBON RANCH 4D-17H-M265 TPZ
8	9379.0	89.51	89.55	7344.0	1149.8	1786.0	0.00	0.00	2013.4	MELBON RANCH 4D 1786 TGT
9	9475.5	91.44	89.55	7343.2	1150.6	1882.5	2.00	0.00	2107.1	
10	10837.7	91.44	89.55	7308.9	1161.4	3244.2	0.00	0.00	3429.9	
11	10905.5	90.09	89.55	7308.0	1161.9	3312.0	2.00	180.00	3495.8	MELBON RANCH 4D 3312 TGT
12	12229.9	90.09	89.55	7306.0	1172.4	4636.3	0.00	0.00	4782.2	MELBON RANCH 4D-17H-M265 BHL

Project: Sec 17 T2N-R65W
Site: Melbon Ranch Pad
Well: MELBON RANCH 4D-17H-M265
Wellbore: OH
Design: FINAL

FINAL
MELBON RANCH 4D-17H-M265
423357 185200
WELL @ 4979.0ft (Original Well Elev)
Ground Level @ 4956.0
North American Datum 1983
Well MELBON RANCH 4D-17H-M265, True North

Type	Target	Origin	Slot	N/S	E/W	From	TVD
Name	User	No	Target	Target	Target	Target	Target
MELBON RANCH 4D-17H-M265 BHL	7306.0	1172.4	4636.3	40.13842	-104.69636		
MELBON RANCH 4D 3312 TGT	7308.0	1161.9	3312.0	40.138014	-104.684789		
MELBON RANCH 4D-17H-M265 TPZ	7331.0	1137.8	256.5	40.137948	-104.695718		
MELBON RANCH 4D 1786 TGT	7344.0	1149.8	1786.0	40.137981	-104.690248		



Azimuths to True North
Magnetic North: 8.13°

Magnetic Field
Strength: 52156.4nT
Dip Angle: 66.53°
Date: 9/28/2018
Model: HDGM_FILE

WELL DETAILS: MELBON RANCH 4D-17H-M265

+N/-S	+E/-W	Northing	Easting	Latitude	Longitude
0.0	0.0	1292980.36	3224623.87	40.134825	-104.696636

CATHEDRAL



Survey Report

Company:	Crestone Peak Resources	Local Co-ordinate Reference:	Well MELBON RANCH 4D-17H-M265
Project:	Sec 17 T2N-R65W	TVD Reference:	WELL @ 4979.0ft (Original Well Elev)
Site:	Melbon Ranch Pad	MD Reference:	WELL @ 4979.0ft (Original Well Elev)
Well:	MELBON RANCH 4D-17H-M265	North Reference:	True
Wellbore:	Wellbore #1	Survey Calculation Method:	Minimum Curvature
Design:	FINAL	Database:	USA EDM 5000 Multi Users DB

Project	Sec 17 T2N-R65W, Weld County, CO		
Map System:	US State Plane 1983	System Datum:	Mean Sea Level
Geo Datum:	North American Datum 1983		
Map Zone:	Colorado Northern Zone		

Site		Melbon Ranch Pad			
Site Position:		Northing:	1,292,990.36 ft	Latitude:	40.134852
From:	Map	Easting:	3,224,623.87 ft	Longitude:	-104.696635
Position Uncertainty:	0.0 ft	Slot Radius:	13.200 in	Grid Convergence:	0.52 °

Well	MELBON RANCH 4D-17H-M265					
Well Position	+N/-S	0.0 ft	Northing:	1,292,980.36 ft	Latitude:	40.134825
	+E/-W	0.0 ft	Easting:	3,224,623.87 ft	Longitude:	-104.696636
Position Uncertainty		0.0 ft	Wellhead Elevation:	ft	Ground Level:	4,956.0 ft

Wellbore	Wellbore #1				
Magnetics	Model Name	Sample Date	Declination (°)	Dip Angle (°)	Field Strength (nT)
	HDGM_FILE	9/28/2018	8.13	66.53	52,156.40000000

Design	FINAL				
Audit Notes:					
Version:	1.0	Phase:	ACTUAL	Tie On Depth:	0.0
Vertical Section:	Depth From (TVD)	+N/-S	+E/-W	Direction	
	(ft)	(ft)	(ft)	(°)	
	0.0	0.0	0.0	75.81	

Survey Program	Date	10/3/2018			
From (ft)	To (ft)	Survey (Wellbore)	Tool Name	Description	
181.0	2,393.0	Survey #1 (Wellbore #1)	GYRO-MWD	OWSG Gyro MWD	
2,518.0	12,196.0	Survey #2 (Wellbore #1)	MWD+HDGM	OWSG MWD + HDGM	

Survey										
Measured Depth (ft)	Inclination (°)	Azimuth (°)	Vertical Depth (ft)	+N/-S (ft)	+E/-W (ft)	Vertical Section (ft)	Dogleg Rate (°/100ft)	Build Rate (°/100ft)	Formations / Comments	
0.0	0.00	0.00	0.0	0.0	0.0	0.0	0.00	0.00		
181.0	0.35	350.77	181.0	0.5	-0.1	0.0	0.19	0.19		
275.0	3.26	17.23	274.9	3.4	0.7	1.5	3.14	3.10		
370.0	4.84	17.31	369.7	9.8	2.6	5.0	1.66	1.66		
444.0	5.92	12.89	443.4	16.5	4.4	8.3	1.56	1.46		
558.0	7.30	7.56	556.6	29.4	6.7	13.7	1.32	1.21		
653.0	8.18	351.30	650.8	42.1	6.5	16.6	2.47	0.93		
747.0	8.89	359.47	743.7	55.9	5.4	18.9	1.49	0.76		
841.0	10.29	357.54	836.4	71.6	5.0	22.4	1.53	1.49		
916.0	9.37	358.78	910.3	84.4	4.5	25.1	1.26	-1.23		
1,010.0	8.71	354.40	1,003.1	99.1	3.7	27.9	1.01	-0.70		
1,105.0	8.20	348.93	1,097.1	112.9	1.7	29.3	1.00	-0.54		

Survey Report

Company:	Crestone Peak Resources	Local Co-ordinate Reference:	Well MELBON RANCH 4D-17H-M265
Project:	Sec 17 T2N-R65W	TVD Reference:	WELL @ 4979.0ft (Original Well Elev)
Site:	Melbon Ranch Pad	MD Reference:	WELL @ 4979.0ft (Original Well Elev)
Well:	MELBON RANCH 4D-17H-M265	North Reference:	True
Wellbore:	Wellbore #1	Survey Calculation Method:	Minimum Curvature
Design:	FINAL	Database:	USA EDM 5000 Multi Users DB

Survey

Measured Depth (ft)	Inclination (°)	Azimuth (°)	Vertical Depth (ft)	+N/-S (ft)	+E/-W (ft)	Vertical Section (ft)	Dogleg Rate (°/100ft)	Build Rate (°/100ft)	Formations / Comments
1,200.0	10.00	350.08	1,190.9	127.7	-1.0	30.3	1.90	1.89	
1,294.0	11.27	354.82	1,283.3	144.9	-3.3	32.3	1.64	1.35	
1,389.0	11.47	357.62	1,376.4	163.6	-4.5	35.7	0.62	0.21	
1,483.0	11.64	4.17	1,468.5	182.4	-4.2	40.6	1.41	0.18	
1,578.0	11.83	6.76	1,561.5	201.6	-2.4	47.1	0.59	0.20	
1,672.0	11.07	3.67	1,653.7	220.2	-0.6	53.3	1.04	-0.81	
1,767.0	10.70	357.63	1,747.0	238.1	-0.4	57.9	1.26	-0.39	
1,861.0	9.28	350.37	1,839.5	254.3	-2.1	60.3	2.02	-1.51	
1,955.0	8.55	342.51	1,932.4	268.4	-5.4	60.5	1.51	-0.78	
2,049.0	8.99	344.05	2,025.3	282.1	-9.5	59.9	0.53	0.47	
2,144.0	8.55	349.20	2,119.2	296.2	-12.9	60.1	0.95	-0.46	
2,238.0	8.81	358.09	2,212.1	310.3	-14.5	62.0	1.45	0.28	
2,333.0	8.60	353.05	2,306.0	324.6	-15.6	64.5	0.83	-0.22	
2,393.0	8.61	345.93	2,365.4	333.4	-17.2	65.1	1.77	0.02	
2,518.0	8.31	338.61	2,489.0	350.9	-22.8	63.9	0.89	-0.24	
2,613.0	9.14	327.10	2,582.9	363.6	-29.4	60.7	2.03	0.87	
2,707.0	7.78	328.24	2,675.9	375.3	-36.8	56.4	1.46	-1.45	
2,802.0	9.01	324.99	2,769.9	386.9	-44.4	51.8	1.39	1.29	
2,896.0	10.77	329.03	2,862.5	400.4	-53.2	46.6	2.01	1.87	
2,990.0	12.18	326.48	2,954.6	416.2	-63.2	40.8	1.59	1.50	
3,085.0	12.92	327.97	3,047.3	433.6	-74.3	34.2	0.85	0.78	
3,203.0	12.00	328.50	3,162.5	455.2	-87.7	26.5	0.79	-0.78	
3,298.0	10.95	327.80	3,255.6	471.3	-97.7	20.8	1.11	-1.11	
3,392.0	11.43	327.01	3,347.9	486.7	-107.5	15.0	0.54	0.51	
3,486.0	10.55	325.78	3,440.1	501.6	-117.4	9.1	0.97	-0.94	
3,581.0	10.37	330.70	3,533.6	516.2	-126.5	3.9	0.96	-0.19	
3,675.0	10.33	330.61	3,626.0	531.0	-134.8	-0.5	0.05	-0.04	
3,770.0	11.87	328.06	3,719.2	546.7	-144.1	-5.7	1.70	1.62	
3,864.0	10.07	327.97	3,811.5	561.8	-153.6	-11.2	1.91	-1.91	
3,959.0	10.59	330.79	3,905.0	576.5	-162.3	-16.0	0.76	0.55	
4,053.0	11.65	331.40	3,997.2	592.4	-171.0	-20.6	1.13	1.13	
4,147.0	12.84	329.91	4,089.1	609.7	-180.8	-25.8	1.31	1.27	
4,242.0	12.48	330.52	4,181.8	627.8	-191.2	-31.4	0.40	-0.38	
4,336.0	12.26	331.84	4,273.6	645.5	-200.9	-36.5	0.38	-0.23	
4,431.0	10.77	334.04	4,366.7	662.3	-209.5	-40.8	1.63	-1.57	
4,526.0	11.56	324.90	4,459.9	678.1	-218.9	-46.0	2.04	0.83	
4,620.0	11.43	323.49	4,552.0	693.3	-229.8	-52.9	0.33	-0.14	
4,715.0	10.29	322.26	4,645.3	707.6	-240.6	-59.8	1.22	-1.20	
4,809.0	11.56	319.36	4,737.6	721.3	-251.9	-67.4	1.47	1.35	
4,904.0	11.74	318.31	4,830.6	735.8	-264.5	-76.1	0.29	0.19	
4,999.0	10.37	316.28	4,923.9	749.2	-276.9	-84.8	1.50	-1.44	
5,093.0	11.25	317.43	5,016.2	762.1	-288.9	-93.3	0.96	0.94	
5,187.0	11.74	322.35	5,108.3	776.4	-301.0	-101.5	1.17	0.52	
5,282.0	10.37	319.62	5,201.6	790.5	-312.4	-109.1	1.54	-1.44	
5,376.0	11.25	326.57	5,293.9	804.6	-322.9	-115.8	1.67	0.94	
5,471.0	8.97	329.03	5,387.4	818.7	-331.9	-121.0	2.44	-2.40	
5,565.0	10.15	327.62	5,480.1	832.0	-340.1	-125.7	1.28	1.26	
5,660.0	10.20	324.99	5,573.6	846.0	-349.4	-131.3	0.49	0.05	
5,754.0	10.29	331.31	5,666.1	860.1	-358.2	-136.4	1.20	0.10	
5,848.0	10.95	332.81	5,758.5	875.5	-366.3	-140.5	0.76	0.70	
5,943.0	11.56	330.52	5,851.7	891.8	-375.1	-145.1	0.80	0.64	
6,038.0	12.44	324.99	5,944.6	908.4	-385.7	-151.2	1.52	0.93	
6,132.0	9.89	325.78	6,036.8	923.4	-396.0	-157.6	2.72	-2.71	

Survey Report

Company:	Crestone Peak Resources	Local Co-ordinate Reference:	Well MELBON RANCH 4D-17H-M265
Project:	Sec 17 T2N-R65W	TVD Reference:	WELL @ 4979.0ft (Original Well Elev)
Site:	Melbon Ranch Pad	MD Reference:	WELL @ 4979.0ft (Original Well Elev)
Well:	MELBON RANCH 4D-17H-M265	North Reference:	True
Wellbore:	Wellbore #1	Survey Calculation Method:	Minimum Curvature
Design:	FINAL	Database:	USA EDM 5000 Multi Users DB

Survey									
Measured Depth (ft)	Inclination (°)	Azimuth (°)	Vertical Depth (ft)	+N/-S (ft)	+E/-W (ft)	Vertical Section (ft)	Dogleg Rate (°/100ft)	Build Rate (°/100ft)	Formations / Comments
6,227.0	9.85	322.88	6,130.4	936.6	-405.5	-163.5	0.52	-0.04	
6,322.0	9.05	334.13	6,224.1	949.8	-413.7	-168.2	2.11	-0.84	
6,416.0	9.54	328.15	6,316.9	963.1	-421.0	-172.1	1.15	0.52	
6,510.0	10.99	325.25	6,409.4	977.1	-430.2	-177.6	1.64	1.54	
6,605.0	8.66	330.60	6,503.0	990.8	-438.9	-182.6	2.63	-2.45	
6,652.0	10.99	0.93	6,549.3	998.3	-440.6	-182.4	11.89	4.96	
6,699.0	14.02	17.28	6,595.2	1,008.2	-438.8	-178.2	9.85	6.45	
6,746.0	16.09	29.50	6,640.6	1,019.4	-433.9	-170.8	8.04	4.40	
6,794.0	18.46	38.46	6,686.5	1,031.1	-425.9	-160.1	7.41	4.94	
6,841.0	19.12	45.76	6,731.0	1,042.3	-415.7	-147.6	5.19	1.40	
6,889.0	21.27	52.44	6,776.0	1,053.1	-403.2	-132.8	6.56	4.48	
6,936.0	22.24	59.29	6,819.7	1,062.8	-388.8	-116.4	5.78	2.06	
6,983.0	23.47	69.14	6,863.0	1,070.7	-372.4	-98.6	8.54	2.62	
7,030.0	26.20	73.97	6,905.7	1,076.9	-353.7	-78.9	7.23	5.81	
7,078.0	28.00	79.68	6,948.4	1,081.9	-332.4	-57.1	6.59	3.75	
7,172.0	35.74	79.60	7,028.2	1,090.8	-283.6	-7.6	8.23	8.23	
7,267.0	41.45	74.50	7,102.4	1,104.2	-226.0	51.6	6.88	6.01	
7,314.0	45.27	74.15	7,136.6	1,112.9	-194.9	83.9	8.14	8.13	
7,361.0	50.24	72.48	7,168.2	1,122.9	-161.6	118.6	10.90	10.57	
7,408.0	54.51	74.06	7,196.8	1,133.6	-126.0	155.8	9.47	9.09	
7,456.0	59.25	78.10	7,223.1	1,143.3	-86.9	196.0	12.13	9.87	
7,503.0	63.69	80.12	7,245.5	1,151.0	-46.4	237.2	10.17	9.45	
7,550.0	69.10	83.64	7,264.3	1,157.1	-3.8	280.0	13.40	11.51	
7,597.0	70.37	88.12	7,280.6	1,160.3	40.2	323.4	9.34	2.70	
7,645.0	74.20	89.26	7,295.2	1,161.3	85.9	367.9	8.29	7.98	
7,692.0	76.13	88.47	7,307.3	1,162.2	131.3	412.2	4.42	4.11	
7,739.0	76.88	89.79	7,318.2	1,162.9	177.0	456.7	3.16	1.60	
7,786.0	81.41	90.93	7,327.1	1,162.6	223.1	501.3	9.93	9.64	
7,819.7	83.61	91.69	7,331.5	1,161.8	256.5	533.5	6.90	6.53	TPZ - 7819.7' MD (2423 FSL, 460 FWL)
7,833.0	84.48	91.99	7,332.8	1,161.4	269.8	546.2	6.90	6.53	
7,927.0	86.99	91.90	7,339.8	1,158.2	363.4	636.3	2.67	2.67	
8,022.0	88.92	92.43	7,343.2	1,154.6	458.3	727.4	2.11	2.03	
8,116.0	90.42	90.41	7,343.8	1,152.3	552.3	817.9	2.68	1.60	
8,210.0	91.78	90.67	7,342.0	1,151.4	646.2	908.8	1.47	1.45	
8,304.0	91.91	90.58	7,338.9	1,150.4	740.2	999.6	0.17	0.14	
8,399.0	90.59	89.09	7,336.9	1,150.7	835.2	1,091.8	2.10	-1.39	
8,493.0	90.77	90.41	7,335.7	1,151.1	929.2	1,183.0	1.42	0.19	
8,587.0	91.21	90.49	7,334.1	1,150.3	1,023.1	1,273.9	0.48	0.47	
8,682.0	91.30	89.88	7,332.0	1,150.0	1,118.1	1,365.9	0.65	0.09	
8,776.0	91.21	90.67	7,330.0	1,149.6	1,212.1	1,456.9	0.85	-0.10	
8,871.0	88.26	91.64	7,330.4	1,147.7	1,307.1	1,548.5	3.27	-3.11	
8,965.0	88.35	91.55	7,333.2	1,145.1	1,401.0	1,638.9	0.14	0.10	
9,060.0	88.48	91.72	7,335.8	1,142.3	1,495.9	1,730.3	0.23	0.14	
9,154.0	86.29	90.32	7,340.1	1,140.7	1,589.8	1,820.9	2.76	-2.33	
9,248.0	87.43	90.05	7,345.3	1,140.4	1,683.6	1,911.8	1.25	1.21	
9,343.0	88.84	88.91	7,348.4	1,141.2	1,778.6	2,004.1	1.91	1.48	
9,437.0	90.24	88.30	7,349.1	1,143.5	1,872.5	2,095.7	1.62	1.49	
9,532.0	91.47	89.53	7,347.7	1,145.3	1,967.5	2,188.2	1.83	1.29	
9,627.0	91.38	89.53	7,345.3	1,146.1	2,062.5	2,280.5	0.09	-0.09	
9,721.0	91.16	89.88	7,343.2	1,146.6	2,156.5	2,371.7	0.44	-0.23	
9,816.0	91.96	88.74	7,340.7	1,147.7	2,251.4	2,464.1	1.47	0.84	
9,910.0	92.57	88.82	7,336.9	1,149.7	2,345.3	2,555.6	0.65	0.65	
10,005.0	92.44	89.00	7,332.8	1,151.5	2,440.2	2,648.0	0.23	-0.14	

Survey Report

Company:	Crestone Peak Resources	Local Co-ordinate Reference:	Well MELBON RANCH 4D-17H-M265
Project:	Sec 17 T2N-R65W	TVD Reference:	WELL @ 4979.0ft (Original Well Elev)
Site:	Melbon Ranch Pad	MD Reference:	WELL @ 4979.0ft (Original Well Elev)
Well:	MELBON RANCH 4D-17H-M265	North Reference:	True
Wellbore:	Wellbore #1	Survey Calculation Method:	Minimum Curvature
Design:	FINAL	Database:	USA EDM 5000 Multi Users DB

Survey									
Measured Depth (ft)	Inclination (°)	Azimuth (°)	Vertical Depth (ft)	+N/-S (ft)	+E/-W (ft)	Vertical Section (ft)	Dogleg Rate (°/100ft)	Build Rate (°/100ft)	Formations / Comments
10,099.0	92.57	88.74	7,328.7	1,153.4	2,534.1	2,739.5	0.31	0.14	
10,193.0	91.47	87.94	7,325.4	1,156.1	2,628.0	2,831.2	1.45	-1.17	
10,288.0	89.05	85.84	7,324.9	1,161.3	2,722.9	2,924.4	3.37	-2.55	
10,382.0	89.32	86.19	7,326.3	1,167.8	2,816.6	3,016.9	0.47	0.29	
10,476.0	90.68	87.86	7,326.3	1,172.7	2,910.5	3,109.1	2.29	1.45	
10,570.0	91.96	89.00	7,324.1	1,175.2	3,004.4	3,200.8	1.82	1.36	
10,665.0	91.56	89.53	7,321.2	1,176.5	3,099.4	3,293.2	0.70	-0.42	
10,760.0	88.66	88.30	7,321.0	1,178.3	3,194.3	3,385.7	3.32	-3.05	
10,854.0	88.48	89.18	7,323.4	1,180.3	3,288.3	3,477.3	0.96	-0.19	
10,948.0	87.78	89.26	7,326.4	1,181.6	3,382.2	3,568.7	0.75	-0.74	
11,043.0	88.62	89.53	7,329.4	1,182.6	3,477.2	3,661.0	0.93	0.88	
11,137.0	90.29	90.76	7,330.3	1,182.4	3,571.2	3,752.0	2.21	1.78	
11,232.0	91.60	91.99	7,328.7	1,180.1	3,666.1	3,843.5	1.89	1.38	
11,326.0	91.52	92.16	7,326.2	1,176.7	3,760.0	3,933.8	0.20	-0.09	
11,421.0	91.74	92.51	7,323.5	1,172.8	3,854.9	4,024.8	0.44	0.23	
11,516.0	90.95	90.85	7,321.2	1,170.0	3,949.8	4,116.1	1.93	-0.83	
11,610.0	90.68	91.02	7,319.9	1,168.5	4,043.8	4,206.9	0.34	-0.29	
11,705.0	91.74	89.88	7,317.9	1,167.8	4,138.8	4,298.8	1.64	1.12	
11,799.0	92.18	89.44	7,314.7	1,168.3	4,232.7	4,390.0	0.66	0.47	
11,894.0	92.22	89.09	7,311.0	1,169.5	4,327.7	4,482.3	0.37	0.04	
11,988.0	91.96	89.18	7,307.6	1,170.9	4,421.6	4,573.7	0.29	-0.28	
12,082.0	91.96	89.35	7,304.4	1,172.2	4,515.5	4,665.1	0.18	0.00	
12,124.0	91.69	88.91	7,303.1	1,172.8	4,557.5	4,705.9	1.23	-0.64	LAST SURVEY - 12124.0' MD
12,196.0	91.69	88.91	7,300.9	1,174.2	4,629.4	4,776.0	0.00	0.00	PTB - 12196.0' MD (2401 FSL, 466 FEL)

Survey Report

Company:	Crestone Peak Resources	Local Co-ordinate Reference:	Well MELBON RANCH 4D-17H-M265
Project:	Sec 17 T2N-R65W	TVD Reference:	WELL @ 4979.0ft (Original Well Elev)
Site:	Melbon Ranch Pad	MD Reference:	WELL @ 4979.0ft (Original Well Elev)
Well:	MELBON RANCH 4D-17H-M265	North Reference:	True
Wellbore:	Wellbore #1	Survey Calculation Method:	Minimum Curvature
Design:	FINAL	Database:	USA EDM 5000 Multi Users DB

Targets									
Target Name	Dip Angle	Dip Dir.	TVD	+N/-S	+E/-W	Northing	Easting	Latitude	Longitude
- hit/miss target	(°)	(°)	(ft)	(ft)	(ft)	(ft)	(ft)		
- Shape									
MELBON RANCH 4D 33	0.00	0.00	7,308.0	1,161.9	3,312.0	1,294,172.22	3,227,925.21	40.138014	-104.684789
- actual wellpath misses target center by 24.7ft at 10877.0ft MD (7324.0 TVD, 1180.6 N, 3311.2 E)									
- Point									
MELBON RANCH 4D 17	0.00	0.00	7,344.0	1,149.8	1,786.0	1,294,146.33	3,226,399.38	40.137981	-104.690248
- actual wellpath misses target center by 9.6ft at 9350.6ft MD (7348.5 TVD, 1141.4 N, 1786.2 E)									
- Point									
MELBON RANCH 4D-17	0.00	0.53	7,306.0	1,172.4	4,636.3	1,294,194.69	3,229,249.36	40.138042	-104.680053
- actual wellpath misses target center by 8.7ft at 12196.0ft MD (7300.9 TVD, 1174.2 N, 4629.4 E)									
- Point									
MELBON RANCH 4D-17	0.00	0.52	7,331.0	1,137.8	256.5	1,294,120.39	3,224,870.09	40.137948	-104.695718
- actual wellpath misses target center by 24.1ft at 7820.4ft MD (7331.5 TVD, 1161.8 N, 257.3 E)									
- Point									

Design Annotations				
Measured Depth	Vertical Depth	Local Coordinates		Comment
(ft)	(ft)	+N/-S (ft)	+E/-W (ft)	
7,819.7	7,331.5	1,161.8	256.5	TPZ - 7819.7' MD (2423 FSL, 460 FWL)
12,124.0	7,303.1	1,172.8	4,557.5	LAST SURVEY - 12124.0' MD
12,196.0	7,300.9	1,174.2	4,629.4	PTB - 12196.0' MD (2401 FSL, 466 FEL)

Checked By: _____ Approved By: _____ Date: _____