

# BRAN-DEX

## WIRELINE SERVICES

## GAMMA RAY CEMENT BOND

Company  
Well  
Field  
Country  
State/Prv

DIVERSIFIED OPERATING  
HOFFMAN 34-1  
CROW  
WELD  
COLORADO

Company DIVERSIFIED OPERATING CORP.

Well HOFFMAN 34-1

Field CROW

Country WELD State/Prv COLORADO

Location

NE / NE  
605' FEL & 628' FNL  
SEC. 34 TWP. 8N RGE. 60W

Other Services

PERFORATE

Elevation

Permanent Datum

GL

Elevation 4896

Log Measured From

KB

Drilling Measured From

KB

K.B. 4906

D.F. 4905

G.L. 4896

Date	JUNE 12, 1966		
Run Number	ONE		
Depth Driller	7013		
Depth Logger	6987		
Bottom Logged Interval	6981		
Top Log Interval	5830		
Open Hole Size			
Type Fluid	WATER		
Density / Viscosity			
Max. Recorded Temp.	164		
Estimated Cement Top	5955		
Time Well Ready			
Time Logger on Bottom			
Equipment Number			
Location			
Recorded By	CLIFF KAISER		
Witnessed By	BILL SCOFIELD		

Borehole Record

Tubing Record

Run Number	Bit	From	To	Size	Weight	From	To

Casing Record	Size	Wgt/Ft	Top	Bottom
Surface String				
Prot. String				
Production String	4.5			
Liner				

>>> Fold Here <<<

All interpretations are opinions based on inferences from electrical or other measurements and we cannot and do not guarantee the accuracy or correctness of any interpretation, and we shall not, except in the case of gross or willful negligence on our part, be liable or responsible for any loss, costs, damages, or expenses incurred or sustained by anyone resulting from any interpretation made by any of our officers, agents or employees. These interpretations are also subject to our general terms and conditions set out in our current Price Schedule.

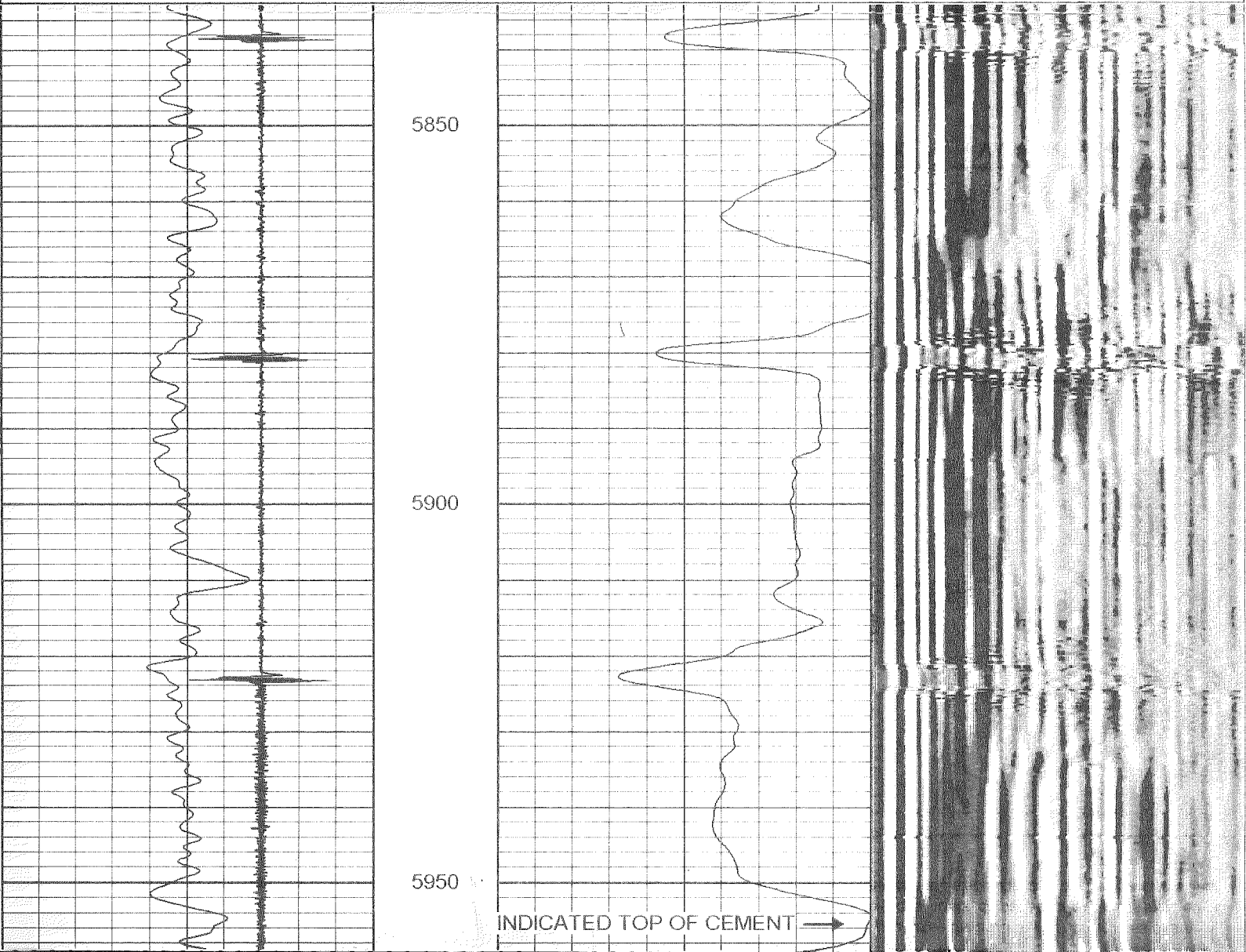
Comments

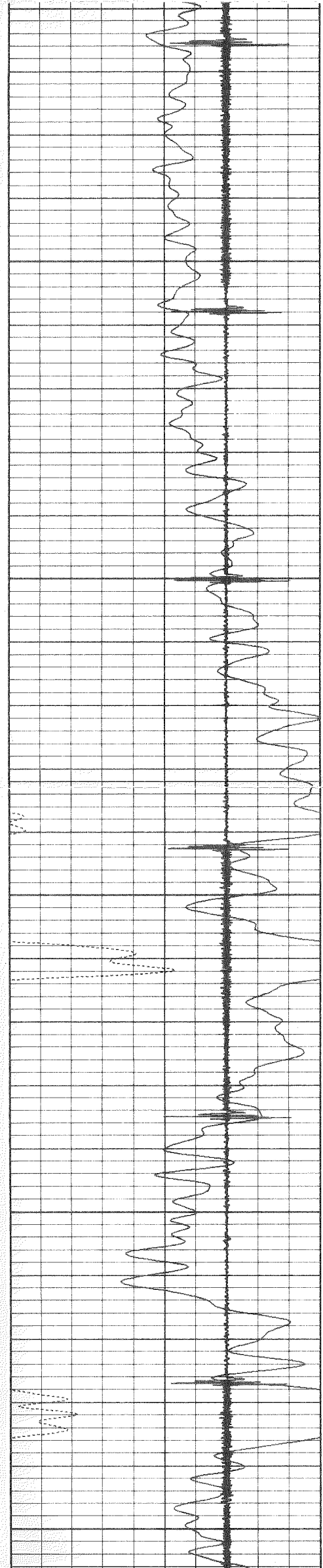
BRAN-DEX CORRECTED 12' UP HOLE TO CORROLATE  
THANK YOU FOR USING BRAN-DEX WIRELINE SERVICES

Database File: doc.db  
Dataset Pathname: pass2  
Presentation Format: cbl01  
Dataset Creation: Wed Jun 12 13:30:48 2002 by Log 6.2\_B4  
Charted by: Depth in Feet scaled 1:240

9	Collar Locator	-1
0	Gamma Ray (GAPI)	200
200	gr (GAPI)	300

0	Amplified Amplitude (mV)	20	200	Variable Density	1200
0	Amplitude (mV)	100			





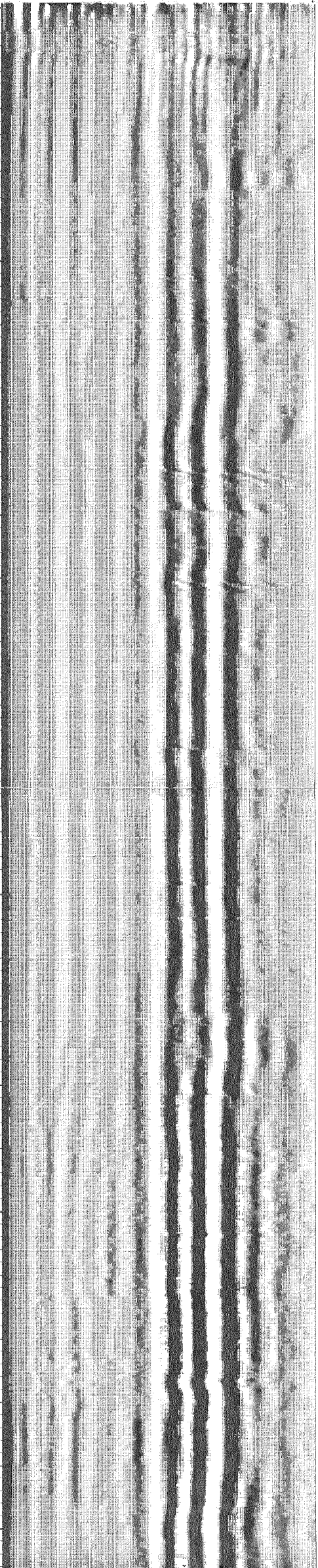
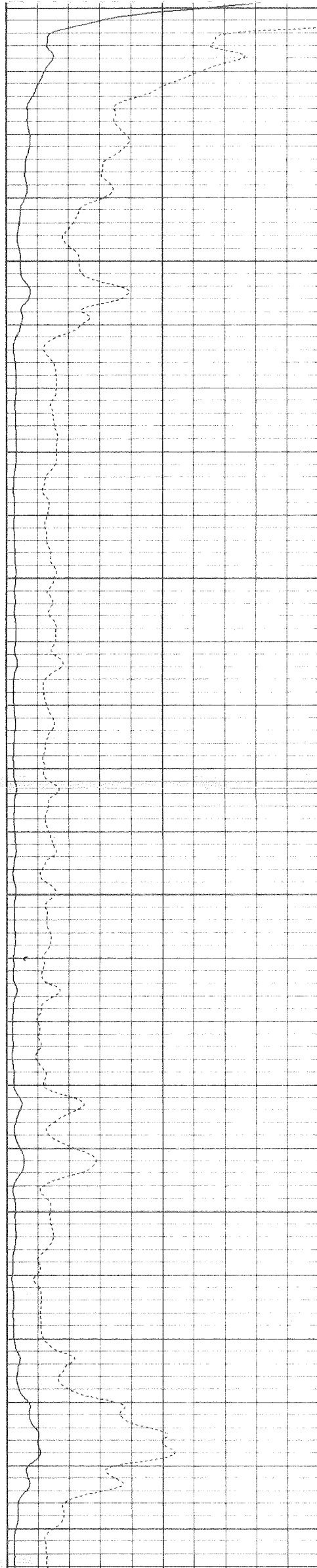
6000

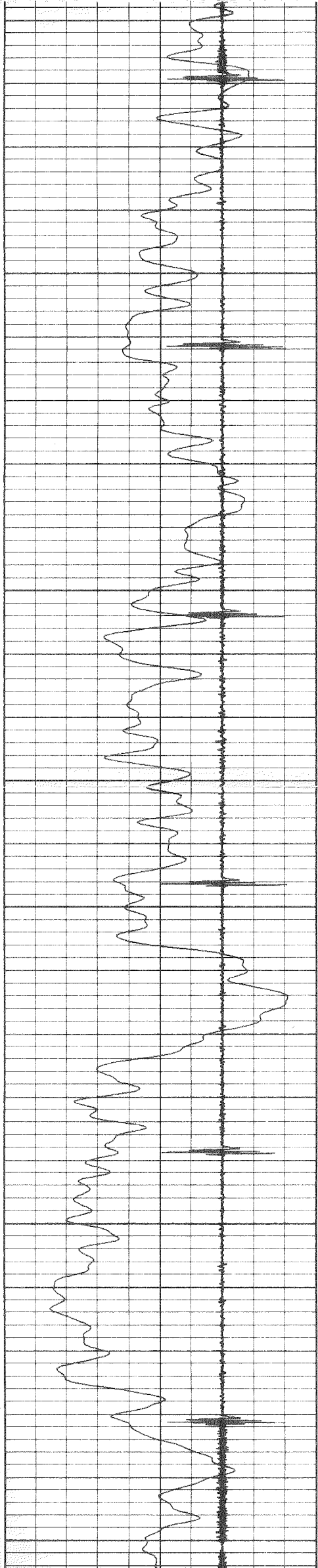
6050

6100

6150

6200





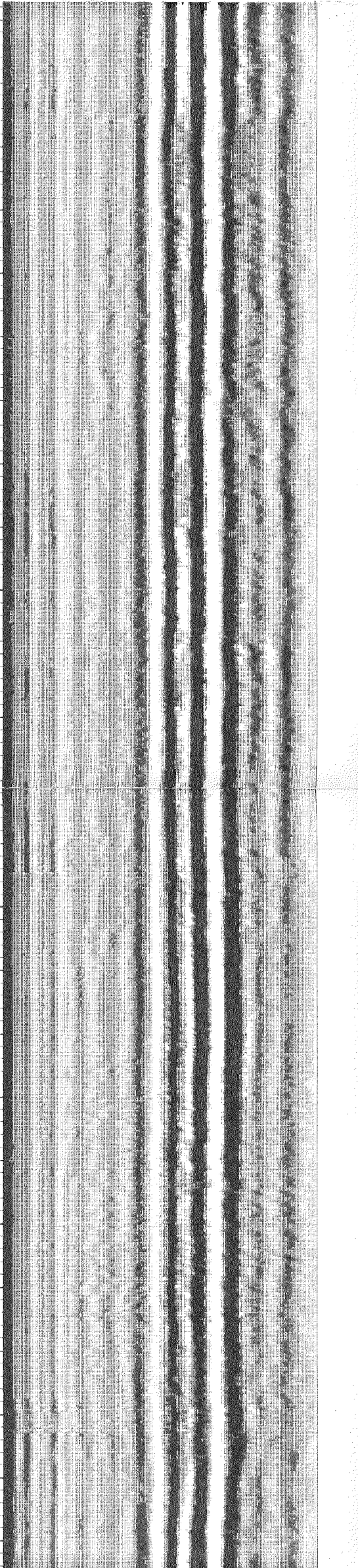
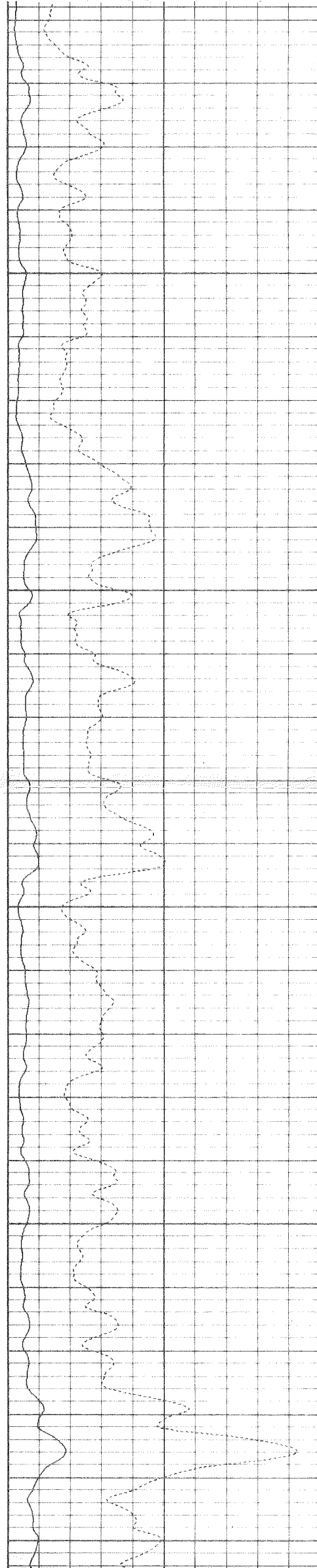
6250

6300

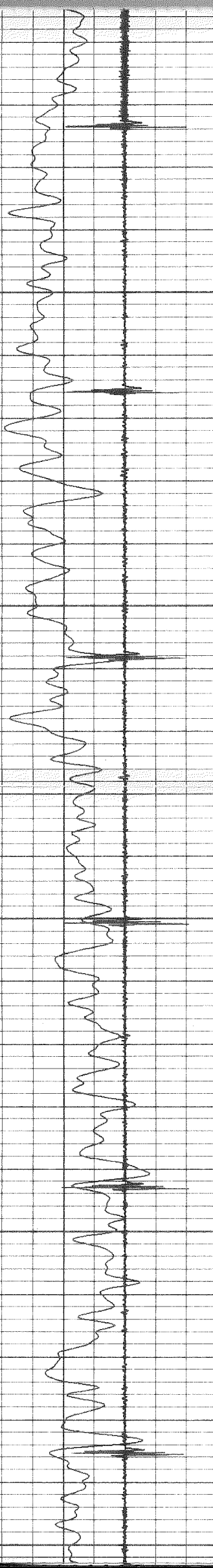
6350

6400

6450







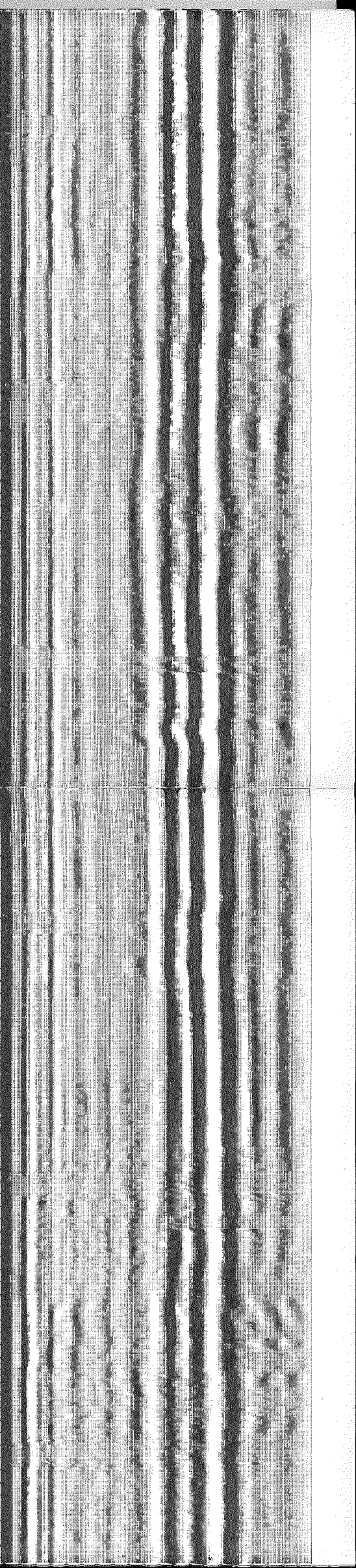
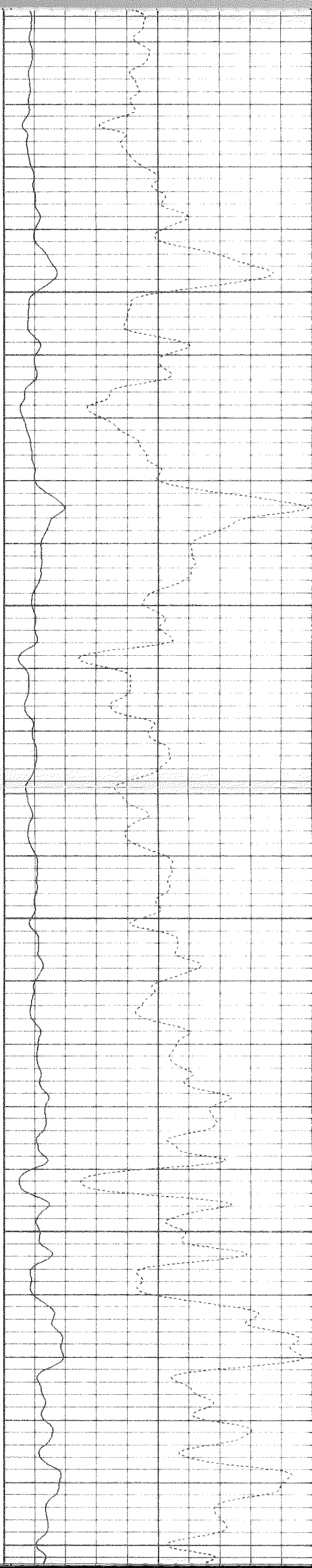
6500

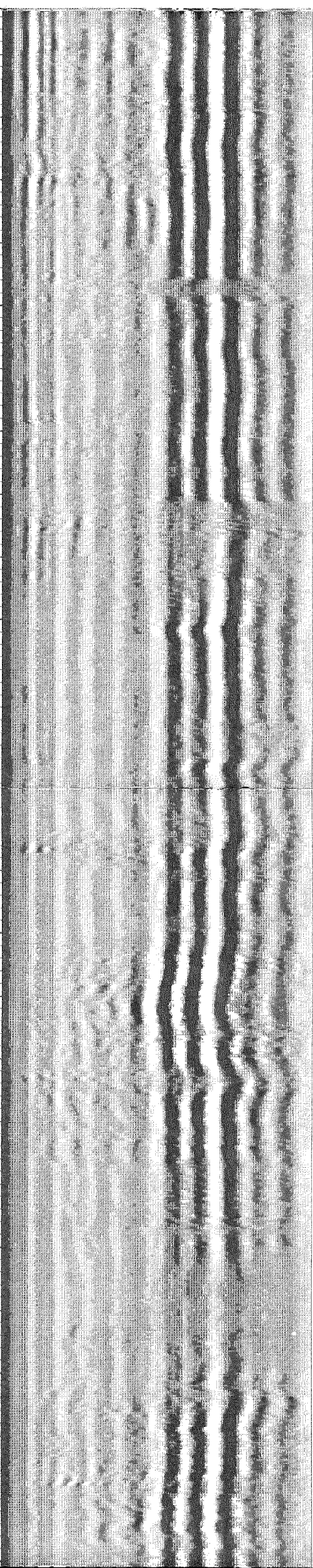
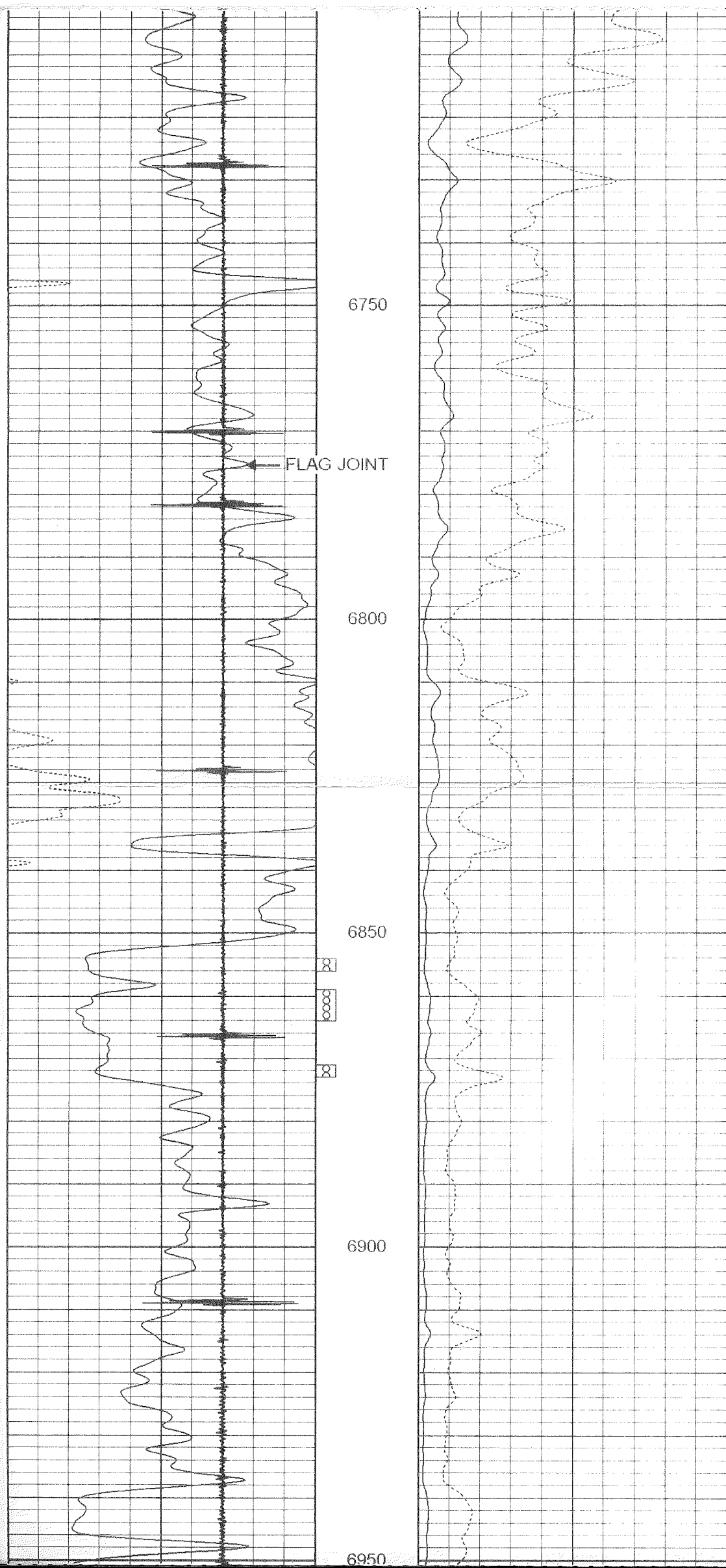
6550

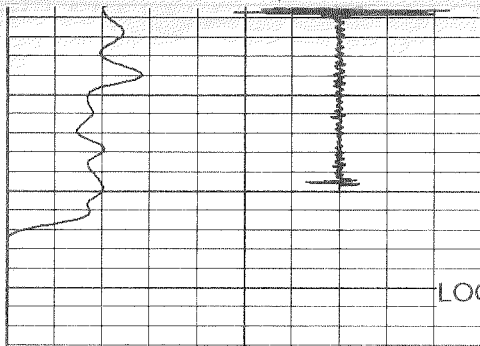
6600

6650

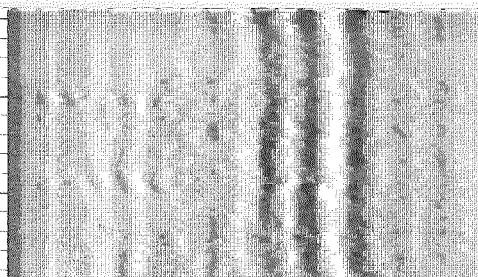
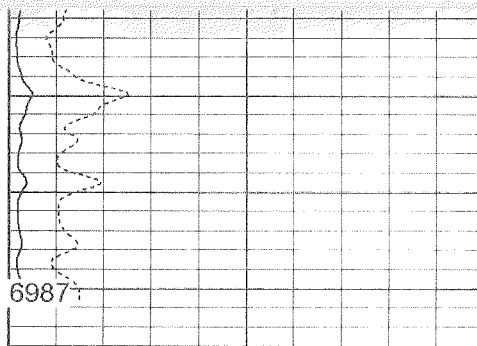
6700







LOGGERS T.D. 6987



9	Collar Locator	-1
0	Gamma Ray (GAPI)	200
200	gr (GAPI)	300

0	Amplified Amplitude (mV)	20
0	Amplitude (mV)	100

200	Variable Density	1200
-----	------------------	------