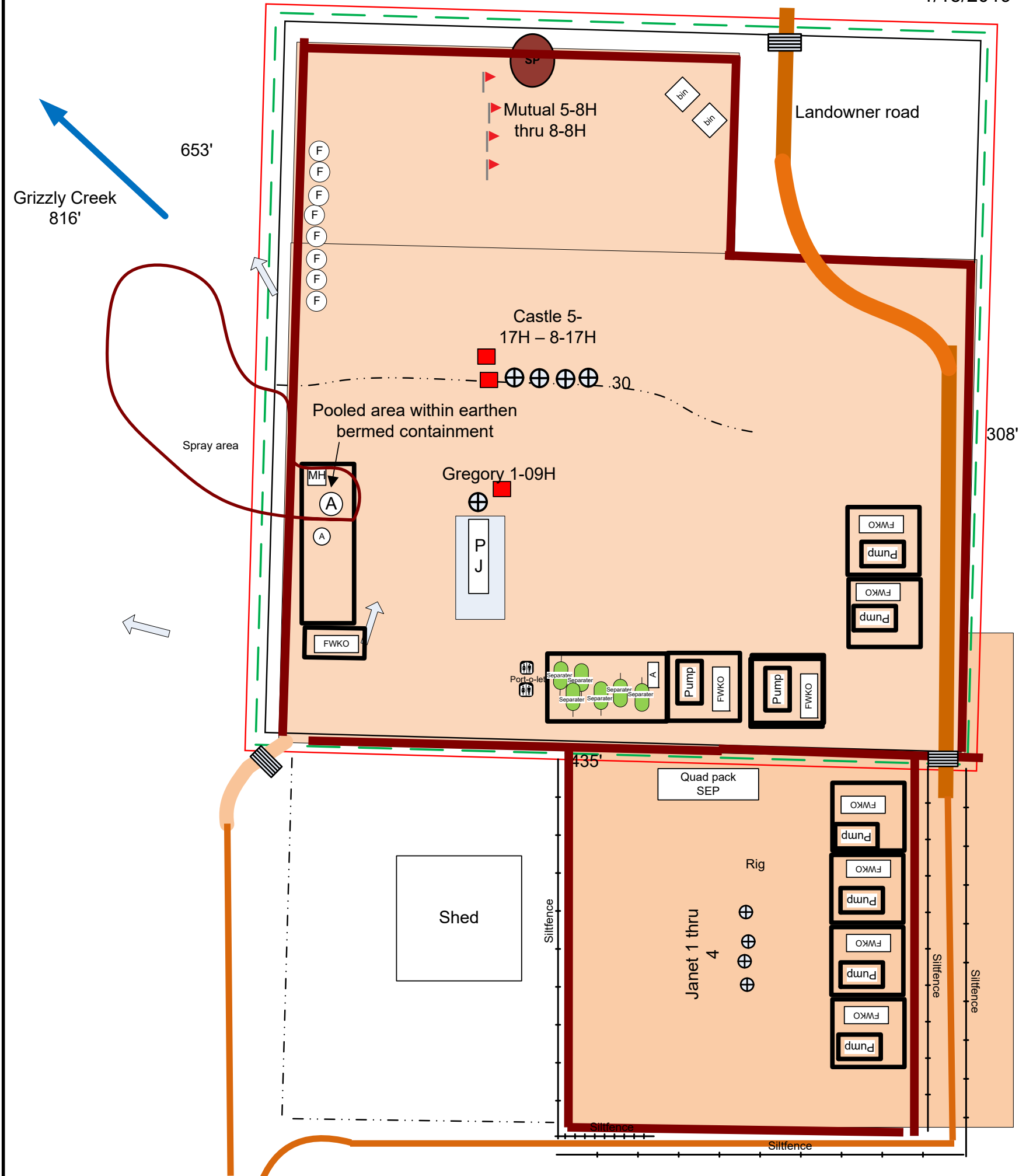


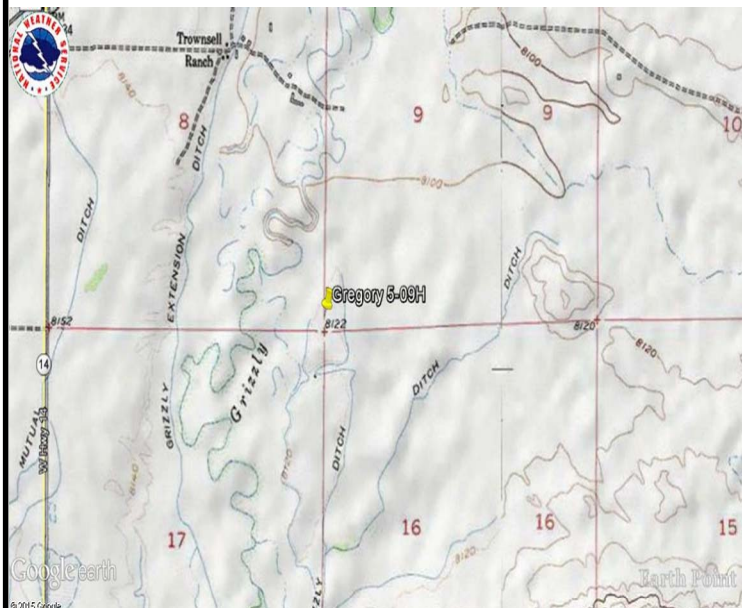
Lease/Name Gregory 0780 1-09H API: 439603 Qtr/Qtr: SWSW TWN: 7N RNG: 80W SEC: 9
 Land Use: Rangeland Lat/Long 40.585223/-106.387783
 Runoff Risk: low County: Jackson



Spill Date:
1/15/2019



Topographic Map: Courtesy of Google Earth 2015



- 1) Construction site boundaries include all ground surface disturbances and approximately 10-15 feet beyond perimeter BMPs. Boundaries are subject to change at any time for pad expansion, maintenance and addition of BMP structures, or new access roads.
- 2) Site is located in a rangeland field. Site will be stabilized after drilling operations and will remain until wells are plugged and abandoned.
- 3) Receiving Body of Water:
Grizzly Creek 816' Northwest
- 4) Pad will be graded as close to pre-existing conditions as practicable and seeded to match the pre-disturbance vegetation type.
- 5) Pad dimensions are approximate.

Created by:



Map Not to Scale