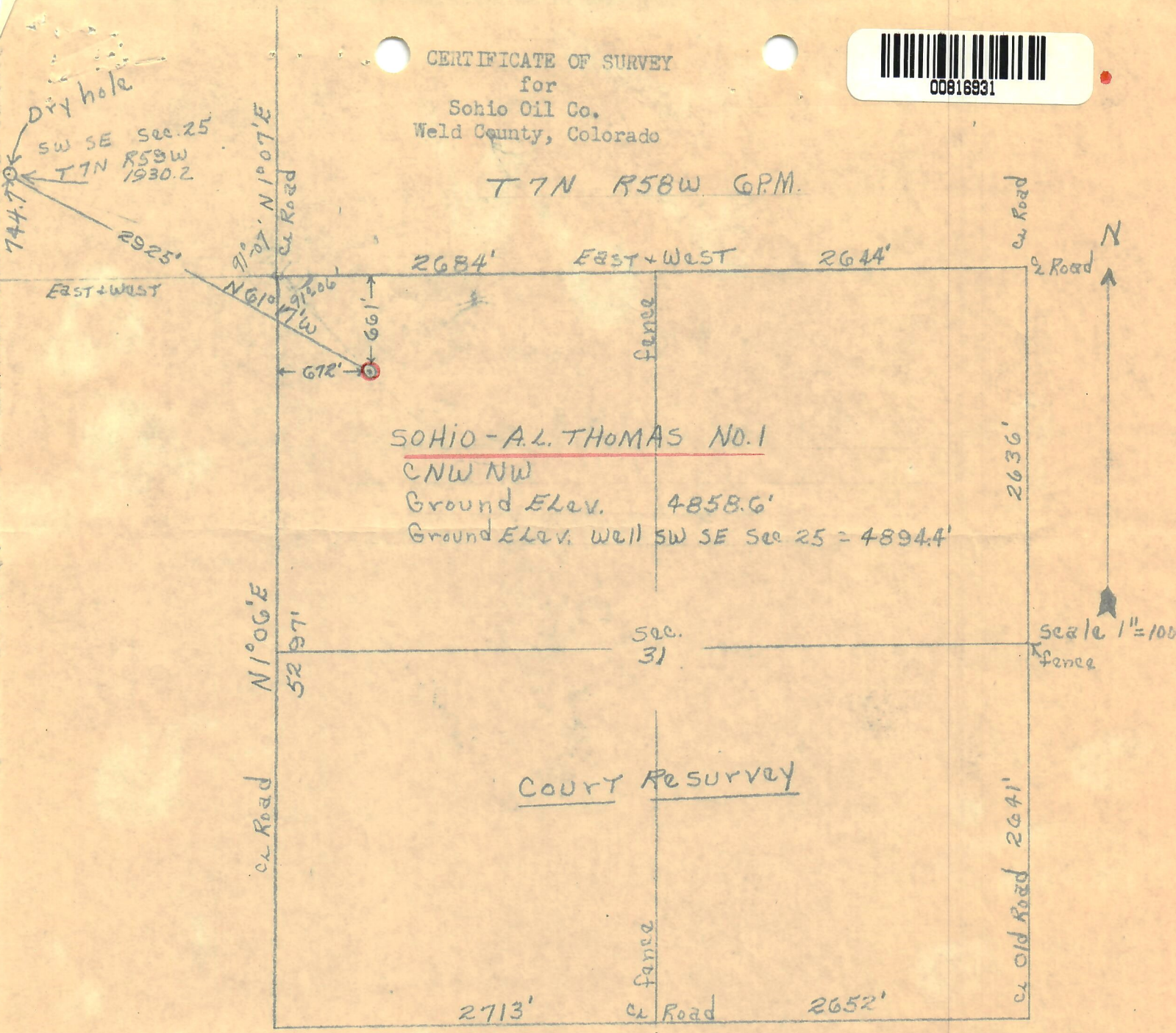


CERTIFICATE OF SURVEY
for
Sohio Oil Co.
Weld County, Colorado



00816931

T 7N R 58W 6PM.



I hereby certify that the above plat is an accurate representation of a correct survey showing the location of Sohio Oil Co.-A.L. Thomas No.1 Oilwell in CNW 1/4 NW 1/4 Sec. 31 T7N R58W 6PM. The elevation of the ground at the stake is 4858.6 feet above sea level from U.S.G.S. bench Mark.

Fort Morgan, Colorado
October 7, 1956.

Bevil J. Osborne
Registered Professional Engineer
State of Colorado.

RECEIVED
OCT 17 1956

OIL & GAS
CONSERVATION COMMISSION