

LEGEND:

- = PROPOSED WELLHEAD.
- ◆ = PRODUCTION INTERVAL.
- = TARGET BOTTOM HOLE.
- ▲ = SECTION CORNERS LOCATED. (NAD 83)

NOTE:

Distances referenced on plat to section lines are perpendicular.

T7N R59W 6th P.M.

LINE TABLE		
LINE	DIRECTION	LENGTH
L1	S70°31'54"E	1843.08'
L2	N00°11'52"W	600.01'
L3	N00°18'26"W	300.00'

SURFACE LOCATION
610' FSL 704' FWL
NAD 83 (SURFACE LOCATION)
LATITUDE = 40°35'01.75" (40.583818°)
LONGITUDE = 103°57'06.00" (103.951667°)
NAD 27 (SURFACE LOCATION)
LATITUDE = 40°35'01.79" (40.583831°)
LONGITUDE = 103°57'04.18" (103.951161°)
STATE PLANE NAD 83 (CO. NORTH)
N: 1459280.73' E: 3430035.67'
STATE PLANE NAD 27 (CO. NORTH)
N: 459279.87' E: 2430187.57'

BEG. PROD. INTERVAL	ENDING PROD. INTERVAL	TARGET BOTTOM HOLE
600' FSL 2440' FWL	600' FNL 2440' FWL	300' FNL 2440' FWL
NAD 83 (BEG. PROD. INTERVAL)	NAD 83 (ENDING PROD. INTERVAL)	NAD 83 (TARGET BOTTOM HOLE)
LATITUDE = 40°35'01.40" (40.583722°)	LATITUDE = 40°36'33.78" (40.609383°)	LATITUDE = 40°36'36.74" (40.610207°)
LONGITUDE = 103°56'43.52" (103.945421°)	LONGITUDE = 103°56'42.48" (103.945134°)	LONGITUDE = 103°56'42.46" (103.945127°)
NAD 27 (BEG. PROD. INTERVAL)	NAD 27 (ENDING PROD. INTERVAL)	NAD 27 (TARGET BOTTOM HOLE)
LATITUDE = 40°35'01.45" (40.583735°)	LATITUDE = 40°36'33.83" (40.609396°)	LATITUDE = 40°36'36.79" (40.610220°)
LONGITUDE = 103°56'41.70" (103.944915°)	LONGITUDE = 103°56'40.66" (103.944629°)	LONGITUDE = 103°56'40.64" (103.944622°)
STATE PLANE NAD 83 (CO. NORTH)	STATE PLANE NAD 83 (CO. NORTH)	STATE PLANE NAD 83 (CO. NORTH)
N: 1459276.11' E: 3431770.74'	N: 1468624.84' E: 3431686.57'	N: 1468924.72' E: 3431683.29'
STATE PLANE NAD 27 (CO. NORTH)	STATE PLANE NAD 27 (CO. NORTH)	STATE PLANE NAD 27 (CO. NORTH)
N: 459275.28' E: 2431922.69'	N: 468623.84' E: 2431838.35'	N: 468923.72' E: 2431835.08'

BASIS OF BEARINGS

TRANSVERSE MERCATOR PROJECTION WITH A CENTRAL MERIDIAN OF W105°00'00".

BASIS OF ELEVATION

OPUS SOLUTION GENERATED NAVD 88



UELS, LLC
Corporate Office * 85 South 200 East
Vernal, UT 84078 * (435) 789-1017

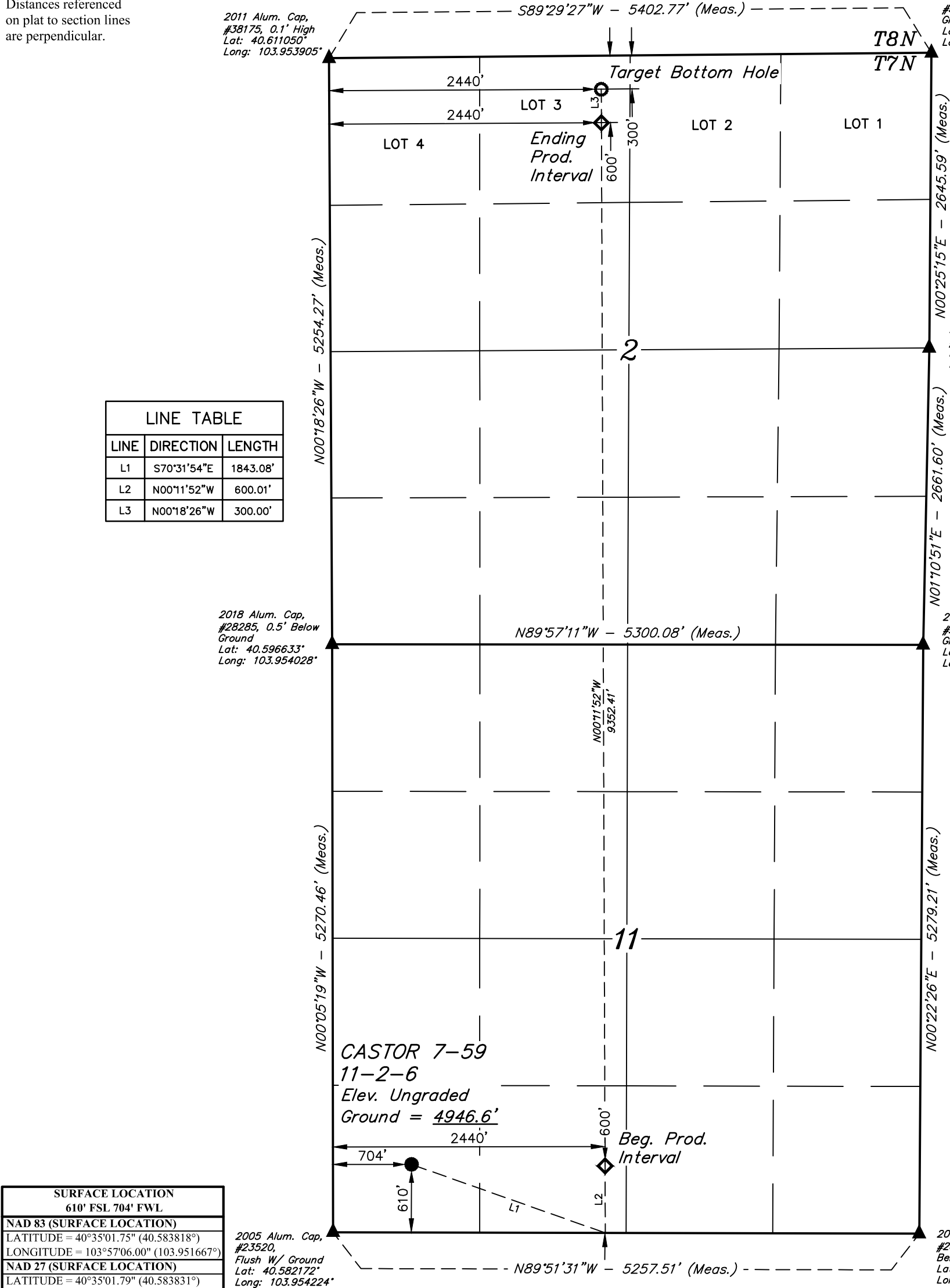


MORNING GUN EXPLORATION LLC

CASTOR 7-59 11-2-6
SW 1/4 SW 1/4, SECTION 11, T7N, R59W, 6th P.M.
WELD COUNTY, COLORADO

SURVEYED BY	JAMES FRESHWATER, D.E.	12-11-18	SCALE
DRAWN BY	C.IVIE	09-04-18	1" = 1000'

WELL LOCATION PLAT



2005 Alum. Cap,
#23520,
Flush W/ Ground
Lat: 40.582172°
Long: 103.954224°

PDOP = 1.6



CERTIFICATION

THIS IS TO CERTIFY THAT THE ABOVE PLAT WAS PREPARED FROM FIELD NOTES OF ACTUAL SURVEYS MADE BY ME OR UNDER MY SUPERVISION, AND THAT THE SAME ARE TRUE AND CORRECT TO THE BEST OF MY KNOWLEDGE AND BELIEF.

REGISTERED LAND SURVEYOR
REGISTRATION NO. 28285
STATE OF COLORADO

12-11-18

REV: 1 12-13-18 T.A. (Surface Hole Move)