

PHOTO: VIEW OF REFERENCE AREA

CAMERA ANGLE: NORTHERLY

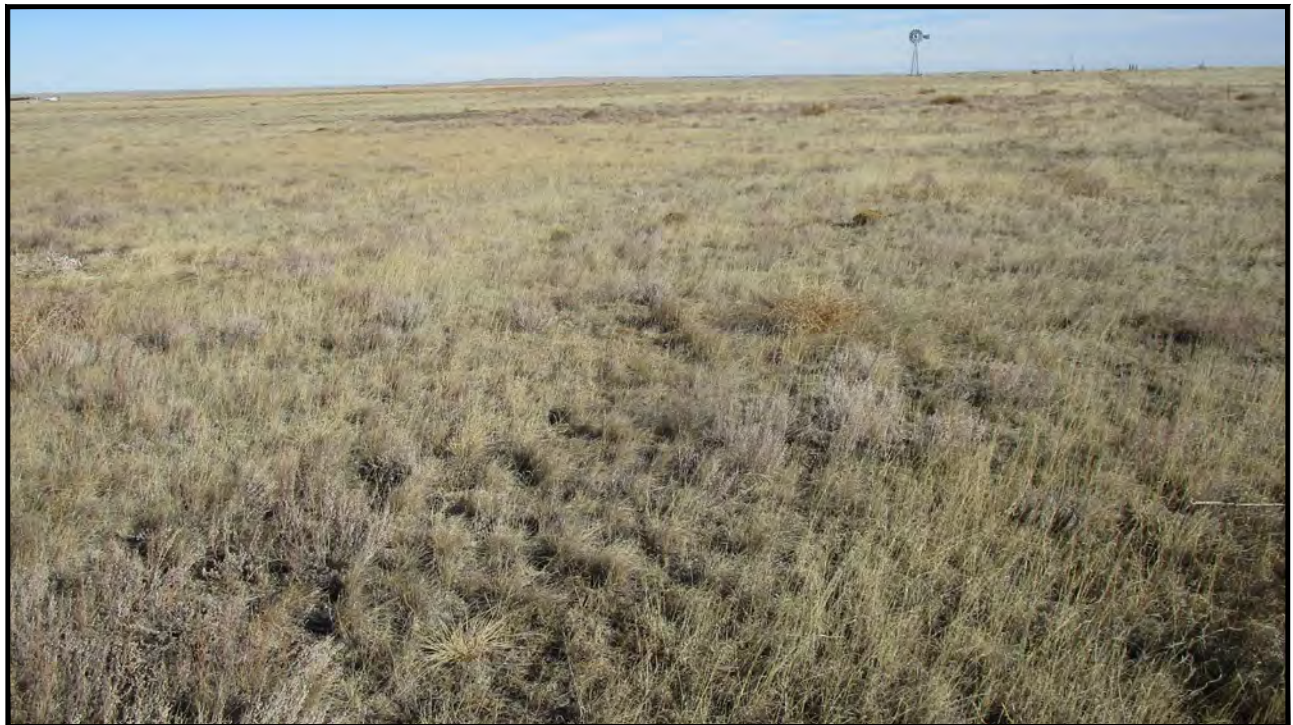


PHOTO: VIEW OF REFERENCE AREA

CAMERA ANGLE: EASTERLY

REV: 1 12-12-18 C.J.K. (PAD MOVE)

MORNING GUN EXPLORATION LLC

CASTOR 7-59 11 PAD
SW 1/4 SW 1/4, SECTION 11, T7N, R59W, 6th P.M.
WELD COUNTY, COLORADO



UELS, LLC
 Corporate Office * 85 South 200 East
 Vernal, UT 84078 * (435) 789-1017

TAKEN BY	J.F., D.E.	12-11-18	
DRAWN BY	J.L.G.	09-04-18	
REFERENCE AREA PHOTOS			REF 1



PHOTO: VIEW OF REFERENCE AREA

CAMERA ANGLE: SOUTHERLY

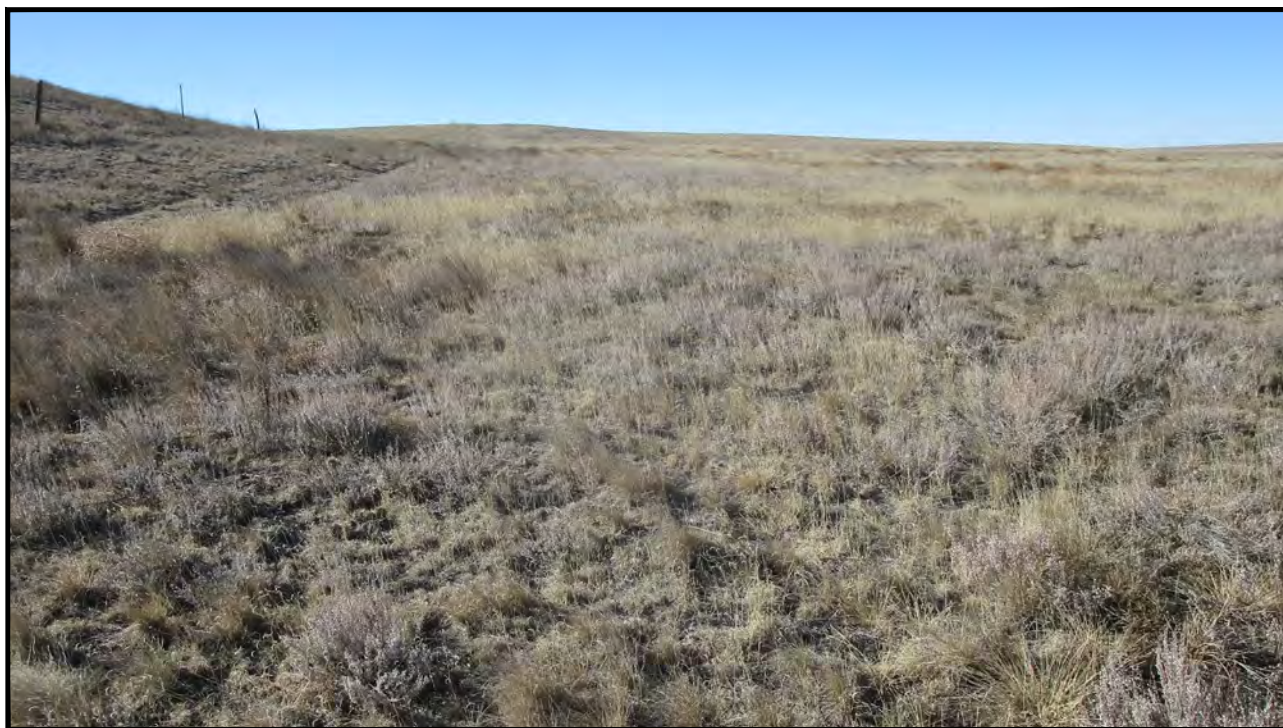


PHOTO: VIEW OF REFERENCE AREA

CAMERA ANGLE: WESTERLY

REV: 1 12-12-18 C.J.K. (PAD MOVE)

MORNING GUN EXPLORATION LLC

CASTOR 7-59 11 PAD
SW 1/4 SW 1/4, SECTION 11, T7N, R59W, 6th P.M.
WELD COUNTY, COLORADO



UELS, LLC
 Corporate Office * 85 South 200 East
 Vernal, UT 84078 * (435) 789-1017

TAKEN BY	J.F., D.E.	12-11-18	
DRAWN BY	J.L.G.	09-04-18	
REFERENCE AREA PHOTOS			REF 2