

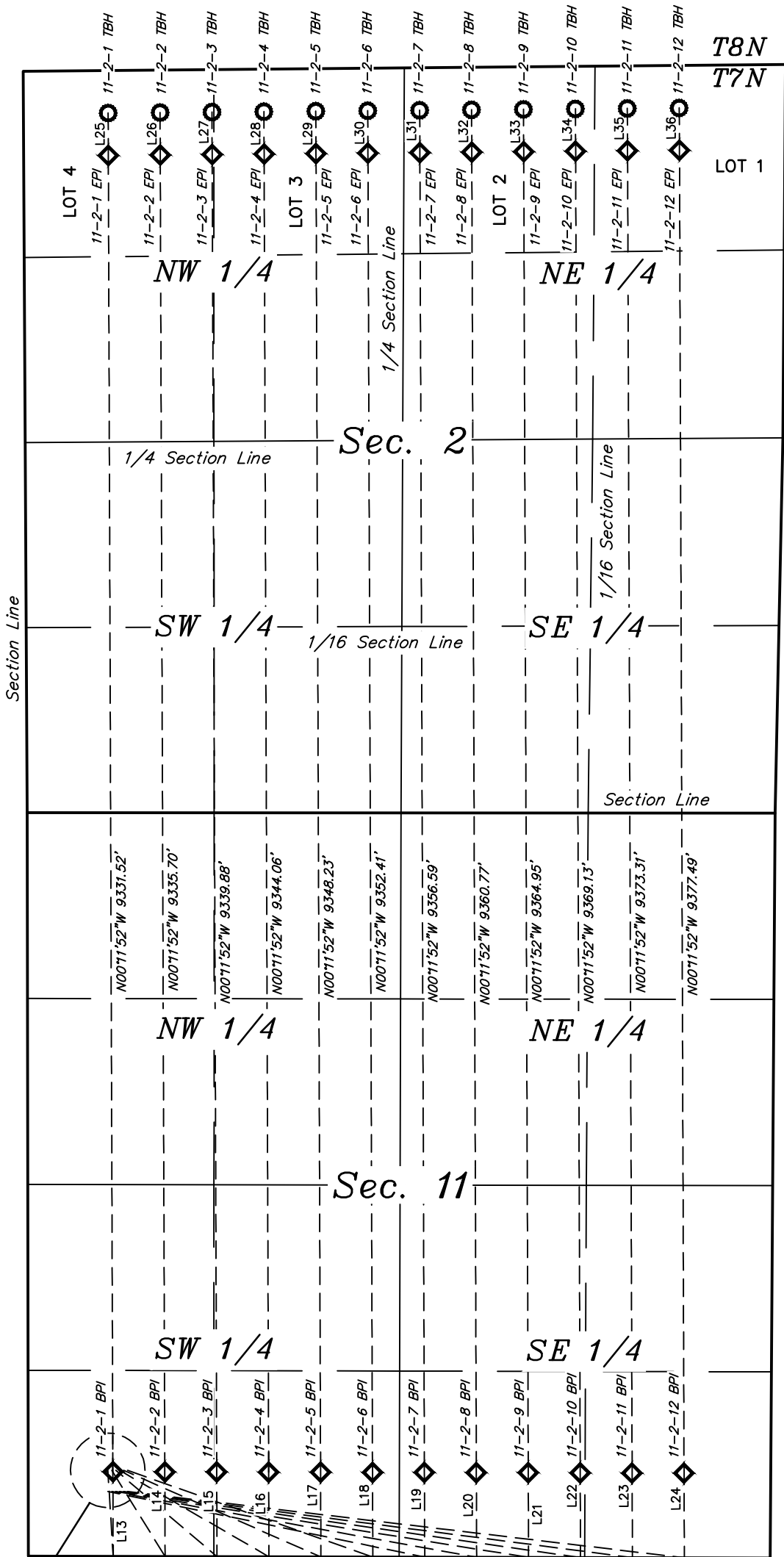


LEGEND:

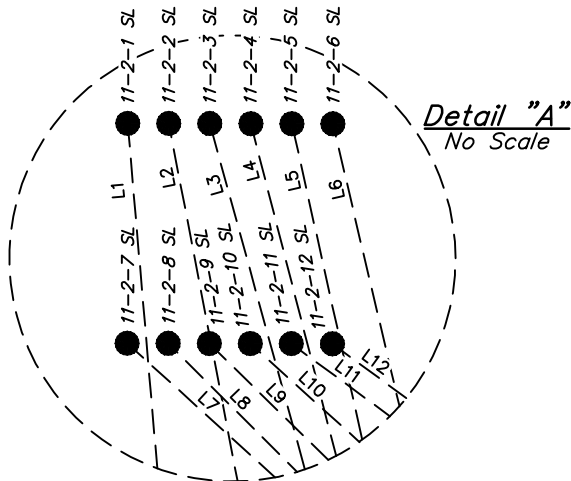
- = SURFACE LOCATION.
- ◆ = PRODUCTION INTERVAL.
- = TARGET BOTTOM HOLE.
- SL = SURFACE LOCATION.
- BPI = BEG. PROD. INTERVAL.
- EPI = ENDING PROD. INTERVAL.
- TBH = TARGET BOTTOM HOLE.



LINE TABLE		
LINE	DIRECTION	LENGTH
L1	S03°32'08"E	611.25'
L2	S31°43'33"E	718.25'
L3	S49°33'21"E	943.05'
L4	S59°55'17"E	1222.30'
L5	S66°18'14"E	1526.39'
L6	S70°31'54"E	1843.08'
L7	S78°17'25"E	2293.82'
L8	S79°46'38"E	2627.80'
L9	S80°55'41"E	2963.15'
L10	S81°50'41"E	3299.46'
L11	S82°35'30"E	3636.45'
L12	S83°12'42"E	3973.95'
L13	N00°11'52"W	600.01'
L14	N00°11'52"W	600.01'
L15	N00°11'52"W	600.01'
L16	N00°11'52"W	600.01'
L17	N00°11'52"W	600.01'
L18	N00°11'52"W	600.01'
L19	N00°11'52"W	600.01'
L20	N00°11'52"W	600.01'
L21	N00°11'52"W	600.01'
L22	N00°11'52"W	600.01'
L23	N00°11'52"W	600.01'
L24	N00°11'52"W	600.01'
L25	N00°18'26"W	300.00'
L26	N00°18'26"W	300.00'
L27	N00°18'26"W	300.00'
L28	N00°18'26"W	300.00'
L29	N00°18'26"W	300.00'
L30	N00°18'26"W	300.00'
L31	N00°18'26"W	300.00'
L32	N00°18'26"W	300.00'
L33	N00°18'26"W	300.00'
L34	N00°18'26"W	300.00'
L35	N00°18'26"W	300.00'
L36	N00°18'26"W	300.00'



See Detail "A"  
@ Below



REV: 1    12-13-18    T.A.    (Surface Hole Move)

NOTES:

MORNING GUN EXPLORATION LLC

CASTOR 7-59 11 PAD  
SW 1/4 SW 1/4, SECTION 11, T7N, R59W, 6th P.M.  
WELD COUNTY, COLORADO

SURVEYED BY	JAMES FRESHWATER, D.E.	12-11-18	SCALE
DRAWN BY	C.IVIE	09-04-18	1" = 1000'
MULTI-Well PLAN			FIGURE #3



UELS, LLC  
Corporate Office \* 85 South 200 East  
Vernal, UT 84078 \* (435) 789-1017