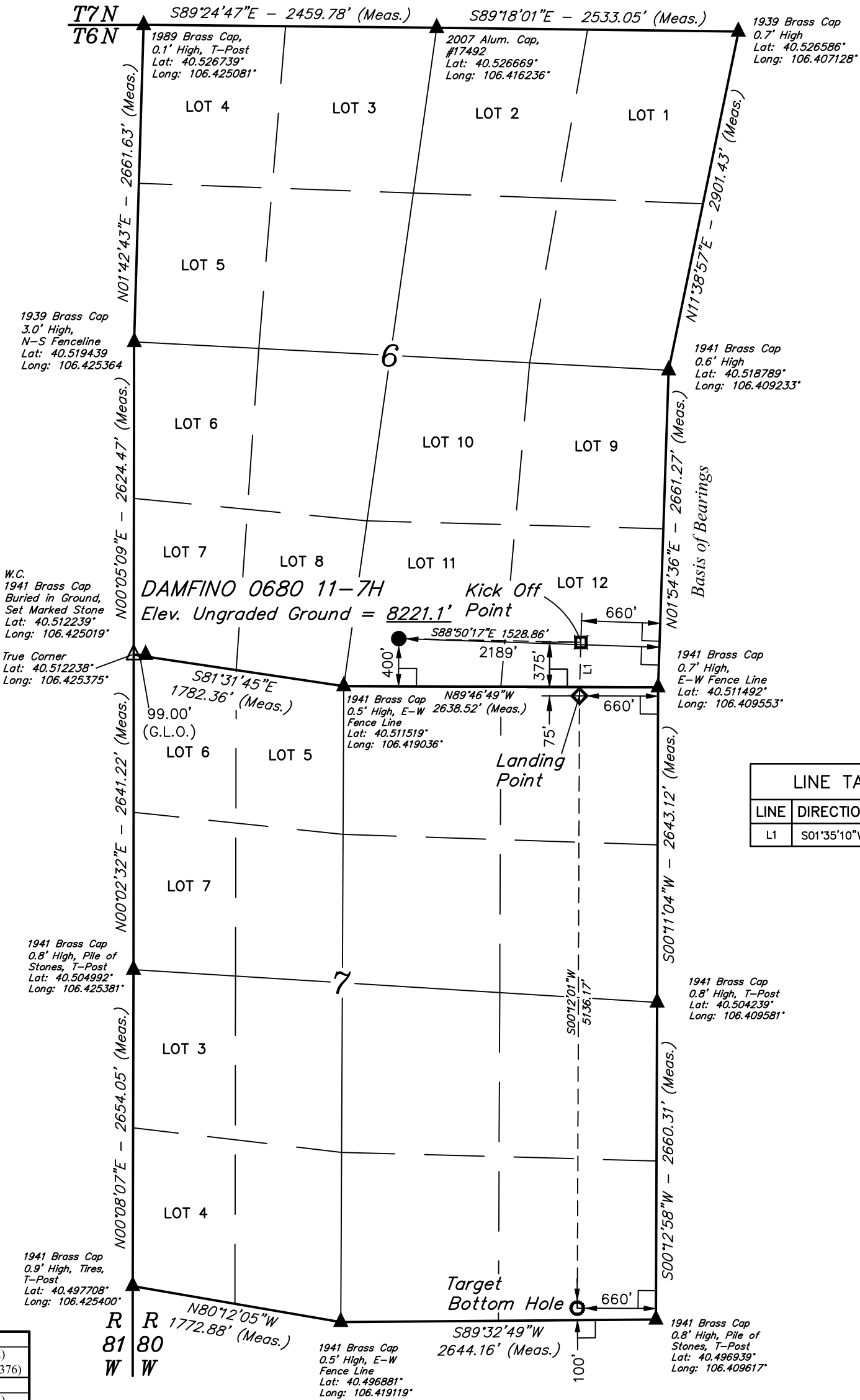


- LEGEND:**
- = 90° SYMBOL
 - = PROPOSED WELLHEAD.
 - = KICK OFF POINT.
 - ◇ = LANDING POINT.
 - = TARGET BOTTOM HOLE.
 - ▲ = SECTION CORNERS LOCATED. (NAD 83)
 - △ = SECTION CORNERS RE-ESTABLISHED. (Not Set on Ground.) (NAD 83)

T6N, R80W, 6th P.M.



LINE TABLE		
LINE	DIRECTION	LENGTH
L1	S01°35'10"W	450.13'

PDOP = 2.2

NAD 83 (SURFACE LOCATION)	
LATITUDE = 40°30'45.10" (40.512612)	LONGITUDE = 106°25'02.55" (106.417376)
NAD 27 (SURFACE LOCATION)	
LATITUDE = 40°30'45.47" (40.512631)	LONGITUDE = 106°25'00.44" (106.416789)
STATE PLANE NAD 83 (CO. NORTH)	
N: 1430904.38 E: 2744930.23	
STATE PLANE NAD 27 (CO. NORTH)	
N: 430902.12 E: 1745086.76	

NAD 83 (KICK OFF POINT)	NAD 83 (LANDING POINT)	NAD 83 (TARGET BOTTOM HOLE)
LATITUDE = 40°30'45.10" (40.512527)	LATITUDE = 40°30'40.65" (40.511293)	LATITUDE = 40°29'49.92" (40.497200)
LONGITUDE = 106°24'42.77" (106.411881)	LONGITUDE = 106°24'42.93" (106.411926)	LONGITUDE = 106°24'43.16" (106.411988)
NAD 27 (KICK OFF POINT)	NAD 27 (LANDING POINT)	NAD 27 (TARGET BOTTOM HOLE)
LATITUDE = 40°30'45.17" (40.512547)	LATITUDE = 40°30'40.72" (40.511312)	LATITUDE = 40°29'49.99" (40.497219)
LONGITUDE = 106°24'40.66" (106.411294)	LONGITUDE = 106°24'40.82" (106.411339)	LONGITUDE = 106°24'41.04" (106.411401)
STATE PLANE NAD 83 (CO. NORTH)	STATE PLANE NAD 83 (CO. NORTH)	STATE PLANE NAD 83 (CO. NORTH)
N: 1430857.84 E: 2746457.74	N: 1430408.23 E: 2746440.72	N: 1425274.70 E: 2746370.55
STATE PLANE NAD 27 (CO. NORTH)	STATE PLANE NAD 27 (CO. NORTH)	STATE PLANE NAD 27 (CO. NORTH)
N: 430855.61 E: 1746614.26	N: 430405.99 E: 1746597.23	N: 425272.46 E: 1746527.12

CERTIFICATE OF REGISTRATION
THIS IS TO CERTIFY THAT THE ABOVE PLAT WAS PREPARED FROM FIELD NOTES OF ACTUAL SURVEYS MADE BY ME OR UNDER MY SUPERVISION AND THAT THE SAME ARE TRUE AND CORRECT TO THE BEST OF MY KNOWLEDGE AND BELIEF.

REGISTERED LAND SURVEYOR
REGISTRATION NO. 28285
STATE OF COLORADO
08-16-18

REV: 1 09-26-18 M.D. (KOP AND LP CHANGE)

BASIS OF BEARINGS
BEARINGS ARE A BASED ASSUMPTION THAT THE EAST LINE OF THE SOUTHEAST 1/4 OF SECTION 6 BEARS N01°54'36"E. MONUMENTS DESCRIBED HEREON.

BASIS OF ELEVATION
SPOT ELEVATION AT THE SOUTHEAST CORNER OF SECTION 29, T7N, R80W, 6th P.M., TAKEN FROM THE COALMONT, QUADRANGLE, COLORADO, JACKSON COUNTY, 7.5 MINUTE QUAD. (TOPOGRAPHIC MAP) PUBLISHED BY THE UNITED STATES DEPARTMENT OF THE INTERIOR, GEOLOGICAL SURVEY. SAID ELEVATION IS MARKED AS BEING 8156 FEET.

UELS, LLC
Corporate Office * 85 South 200 East
Vernal, UT 84078 * (435) 789-1017

SandRidge Exploration & Production, LLC

DAMFINO 0680 11-7H
LOT 11, SECTION 6, T6N, R80W, 6th P.M.
JACKSON COUNTY, COLORADO

SURVEYED BY	JAMES FRESHWATER, N.W.	08-16-18	SCALE
DRAWN BY	M.D.	09-05-18	1" = 1000'

WELL LOCATION PLAT