

**GAMMA RAY
CEMENT BOND
VDL**

Company		Petroleum Development Corporation	
Well	Peterson 43-13		
Field	Wattenberg		
County	Weld	State	Colo.
Location	Sec-13, Twp-6N, Rge-65W 1974' FSL & 668' FEL NE/SE		
Permanent Datum	GL	Elevation	4685
Log Measured From	KB	Elevation	K.B. 4695 D.F. 4694 G.L. 4685
Drilling Measured From	KB	Other Services	perforate
Date	11-5-01		
Run Number	one		
Depth Driller	7175		
Depth Logger	7153		
Bottom Logged Interval	7148-6100		
Top Log Interval	4300-2880		
Open Hole Size	water		
Type Fluid	water		
Density / Viscosity			
Max. Recorded Temp	3050		
Estimated Cement Top			
Time Well Ready			
Time Logger on Bottom			
Equipment Number	T2 MGR4 B1		
Location	WCR49+HWY392,N1/2,W1/10,Sinto		
Recorded By	R H Weisner		
Witnessed By	Dirk Olsen		
Borehole Record		Tubing Record	
Run Number	Bit	From	To
		Size	Weight
			From
			To
Casing Record	Size	Wd/Ft	Top
Surface String			Bottom
Prot. String			
Production String	4.5		
Liner			

<<< Fold Here >>>

All interpretations are opinions based on inferences from electrical or other measurements and we cannot and do not guarantee the accuracy or correctness of any interpretation, and we shall not, except in the case of gross or wilful negligence on our part, be liable or responsible for any loss, costs, damages, or expenses incurred or sustained by anyone resulting from any interpretation made by any of our officers, agents or employees. These interpretations are also subject to our general terms and conditions set out in our current Price Schedule.

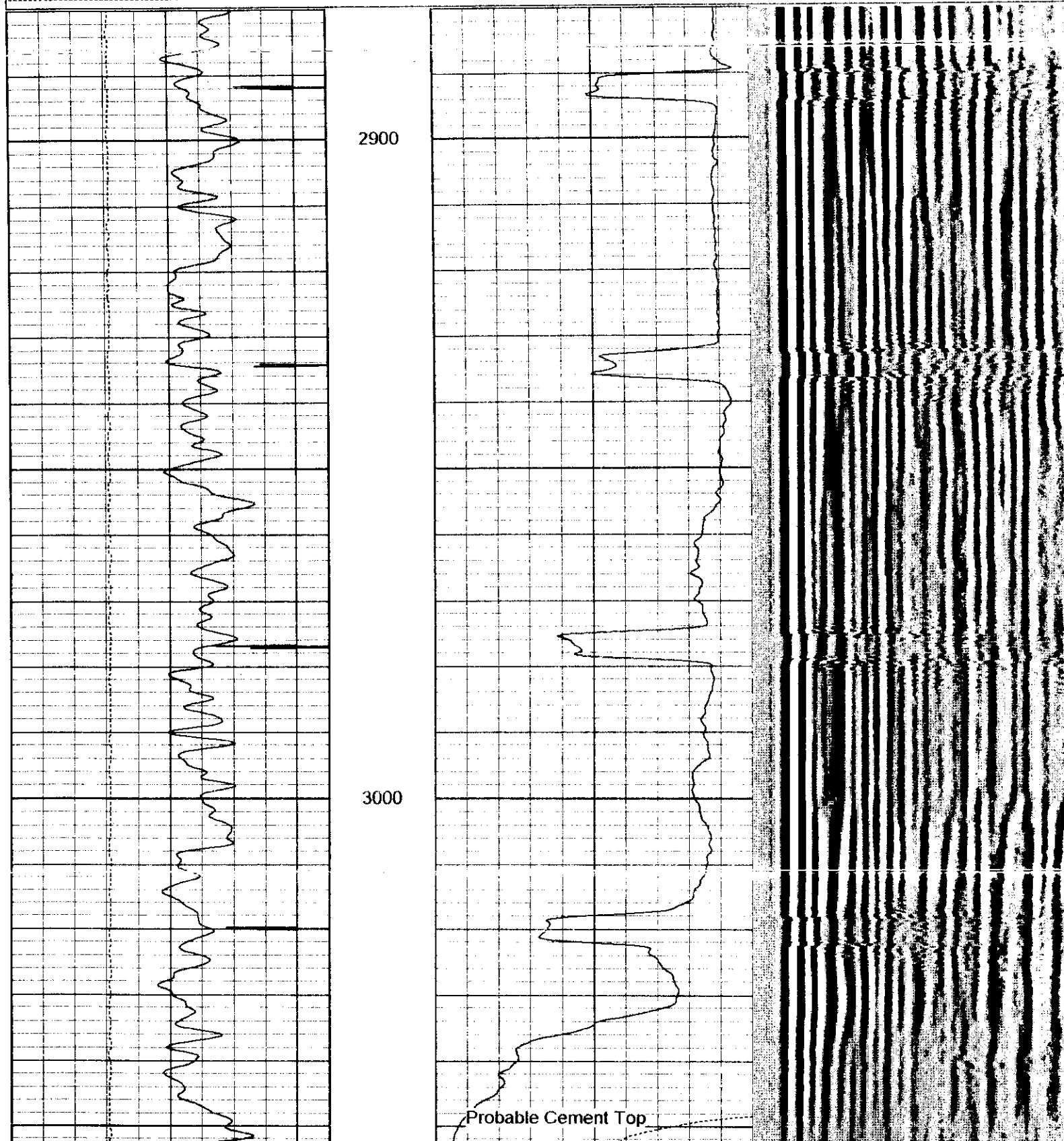
Comments

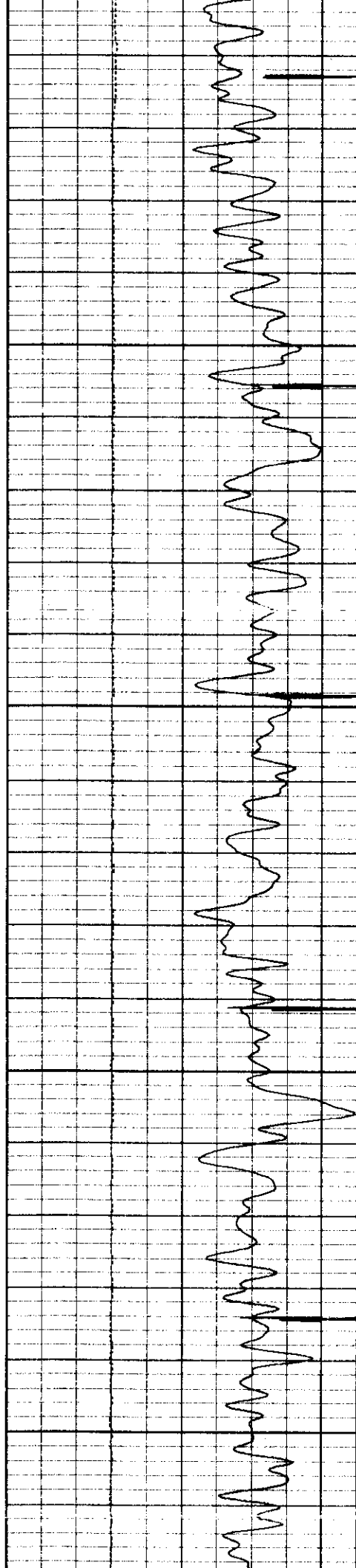
THANK-YOU FOR USING "NUEX" WIRELINE SERVICES INC. !!!
970.526.1084

Database File: pdc4313.db
Dataset Pathname: run2/pass2
Presentation Format: cbl01.prs
Dataset Creation: Mon Nov 05 10:33:59 2001
Charted by: Depth in Feet scaled 1:240

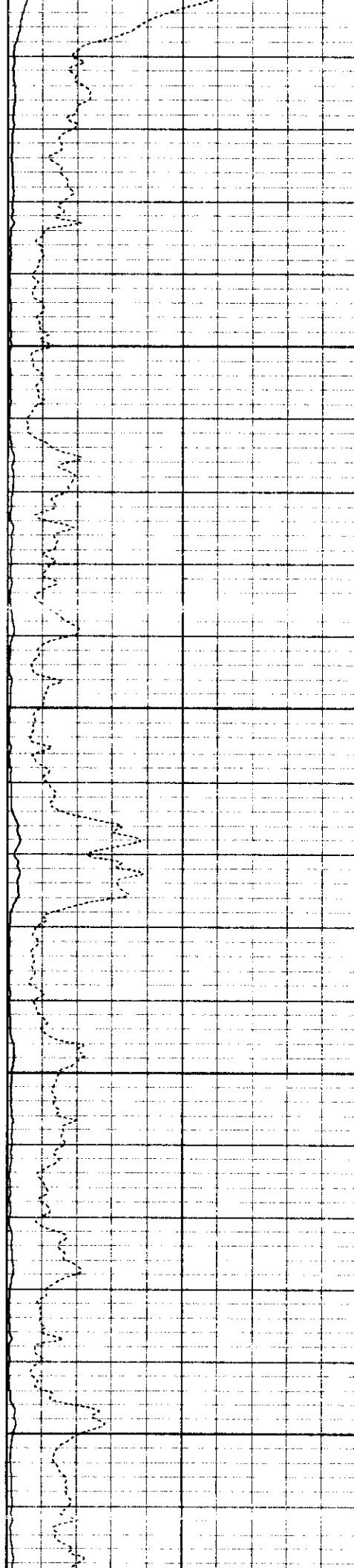
9	Collar Locator	-1
0	Gamma Ray (GAPI)	150
30	LSPD (ft/min)	230

0	Amplified Amplitude (mV)	10	200	Variable Density	1200
0	Amplitude (mV)	100			

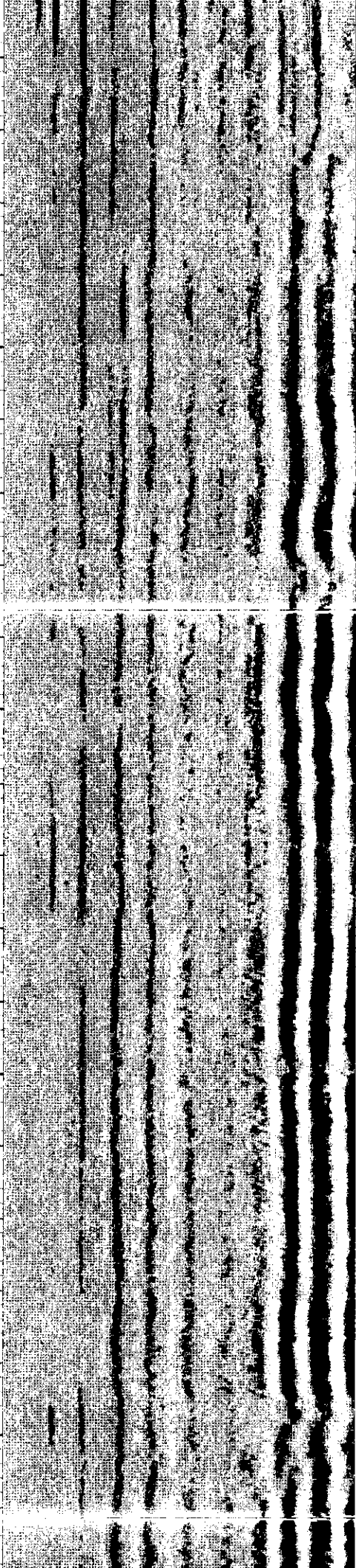


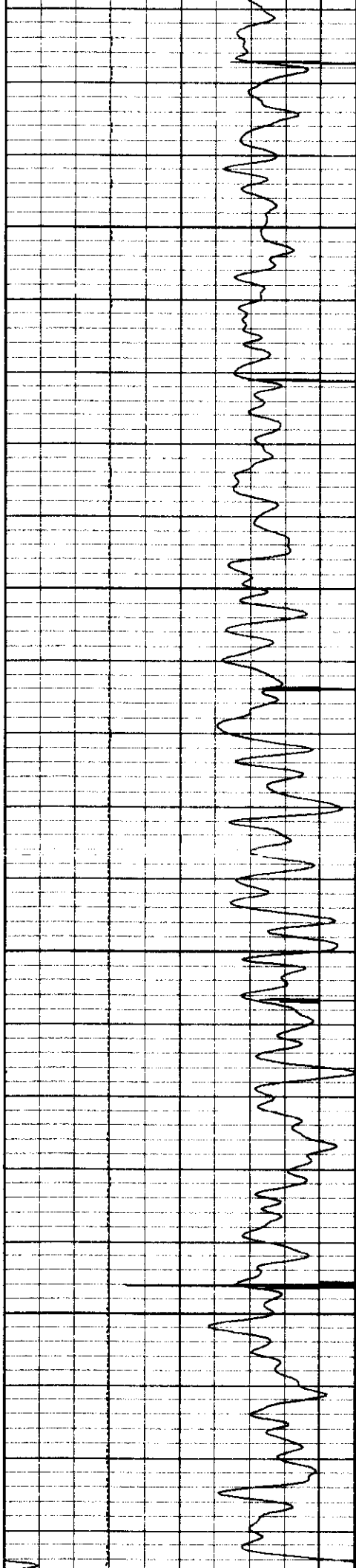


3100

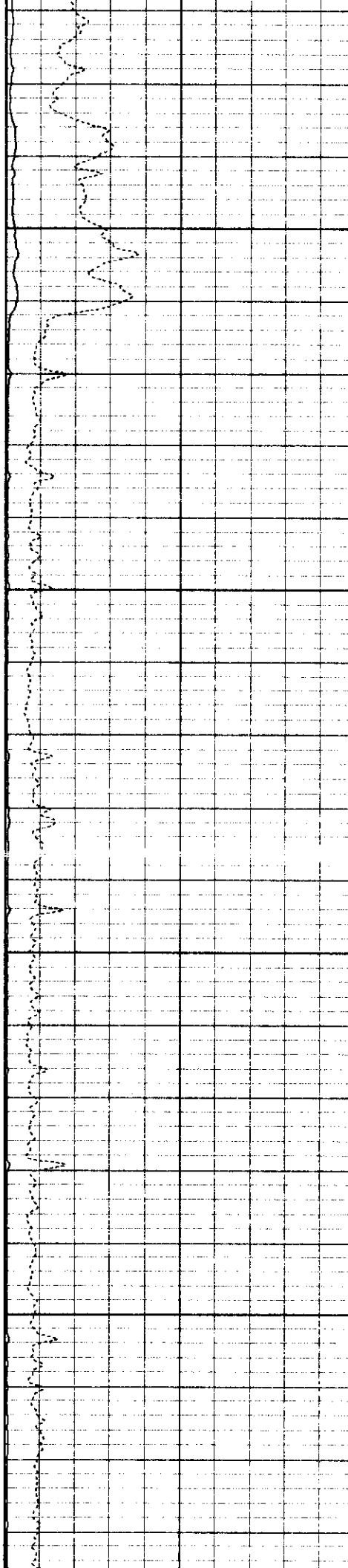


3200

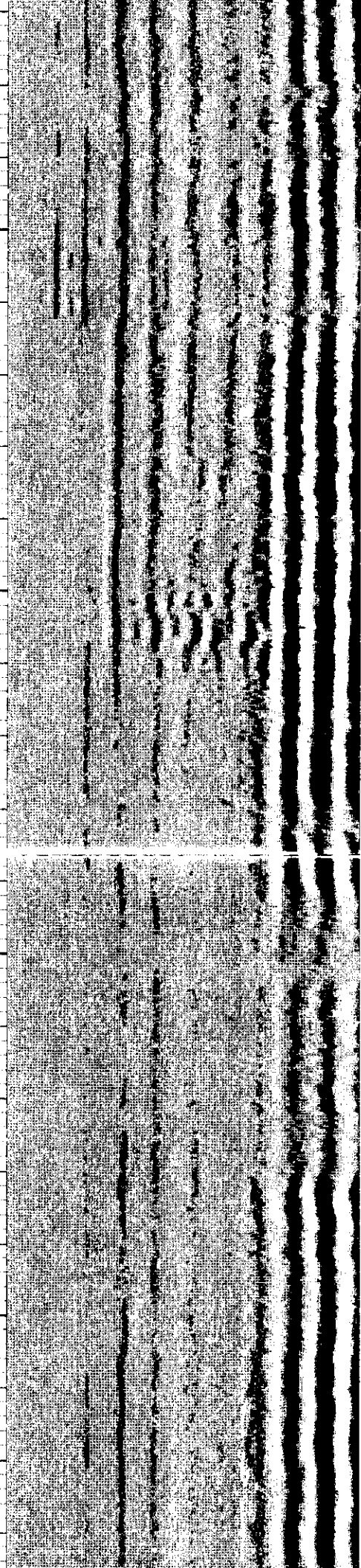


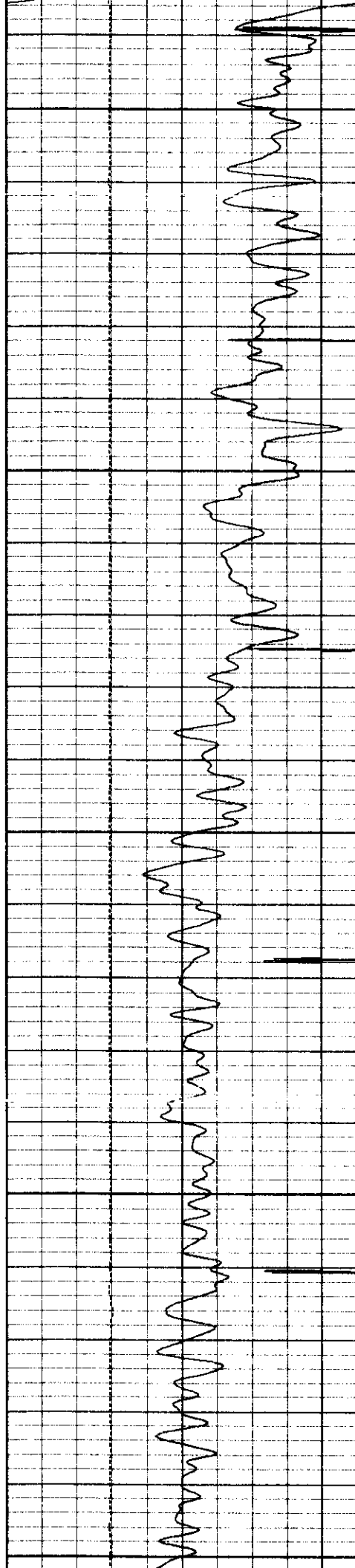


3300



3400

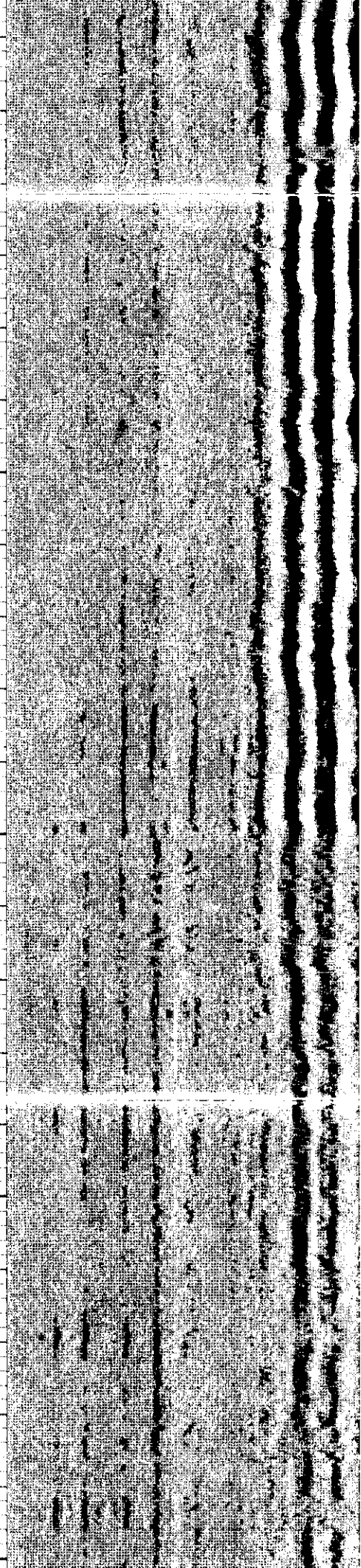
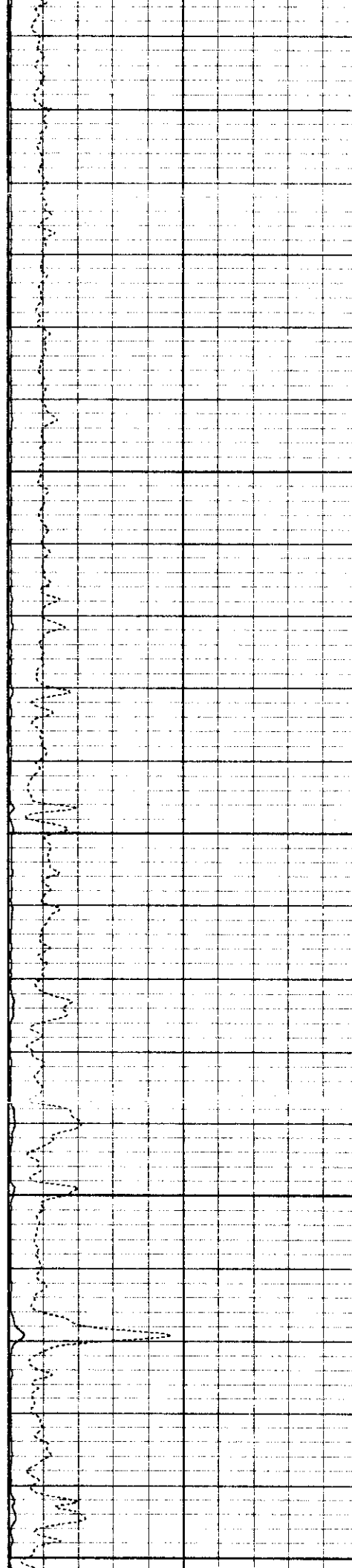


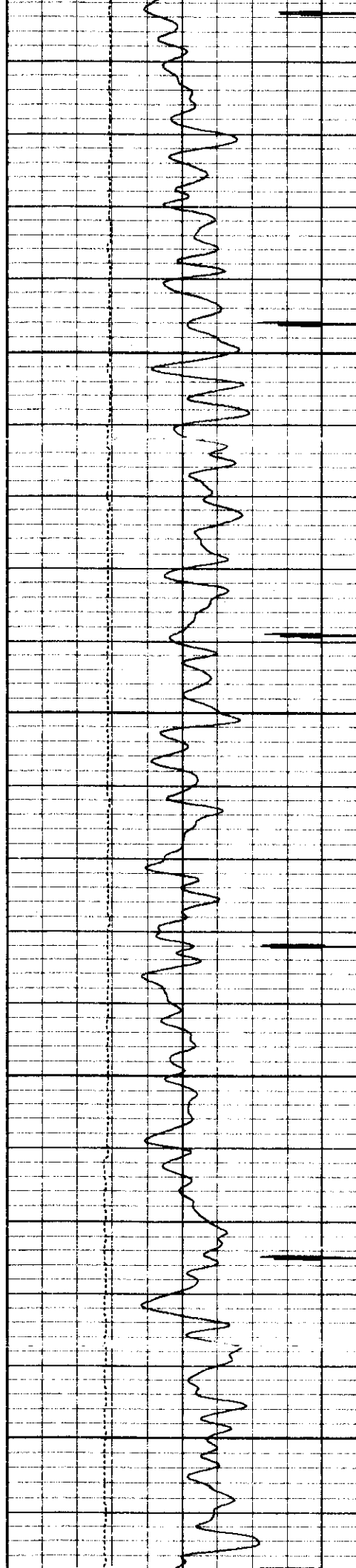


3500

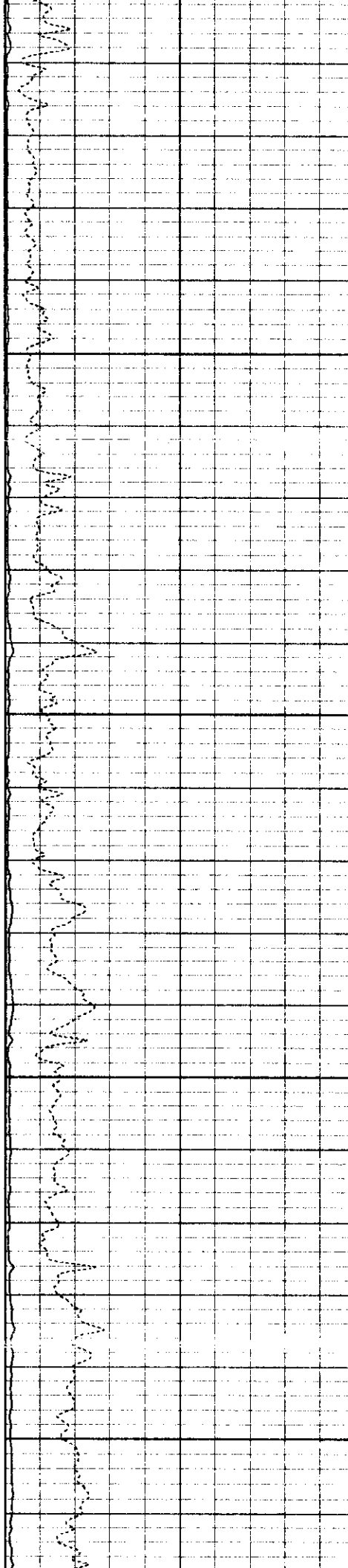
3600

3700



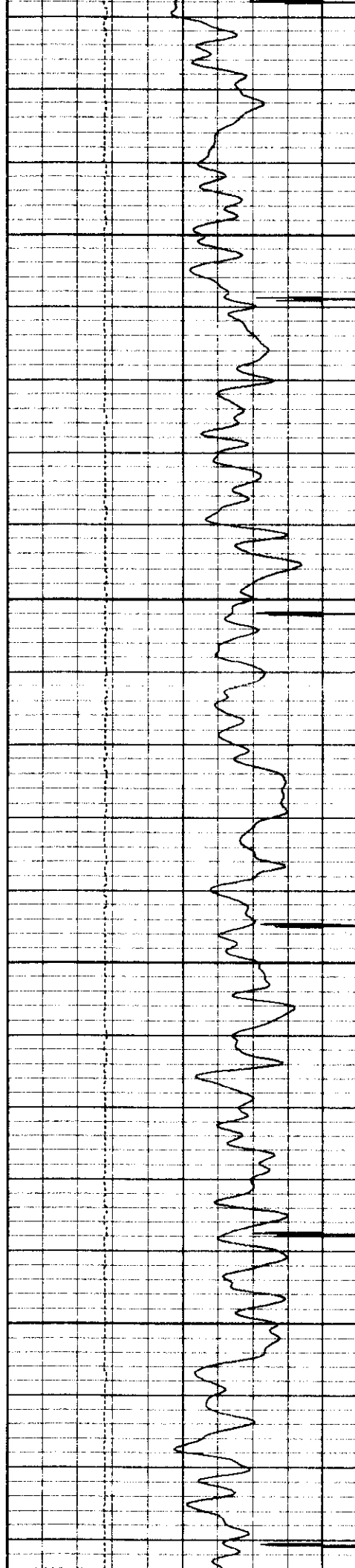


3800



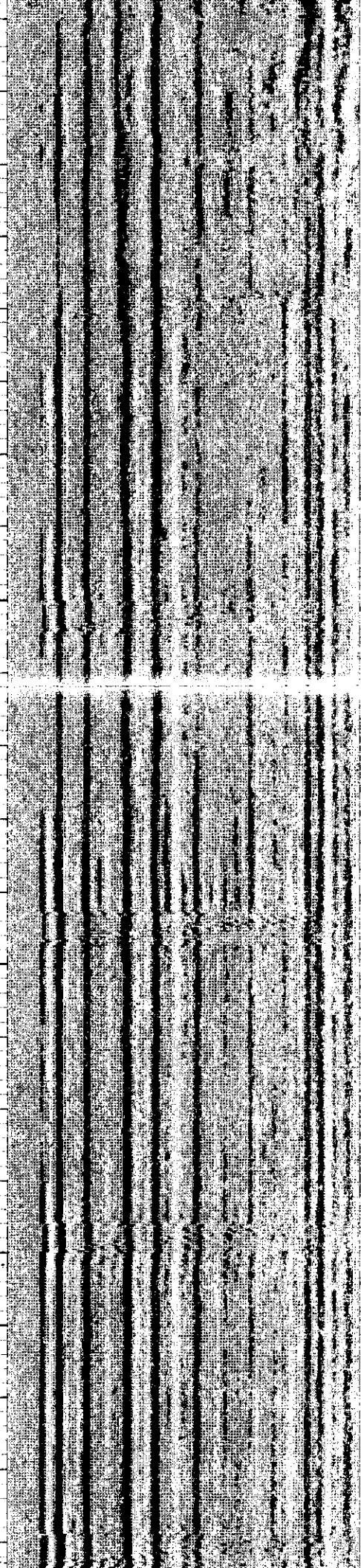
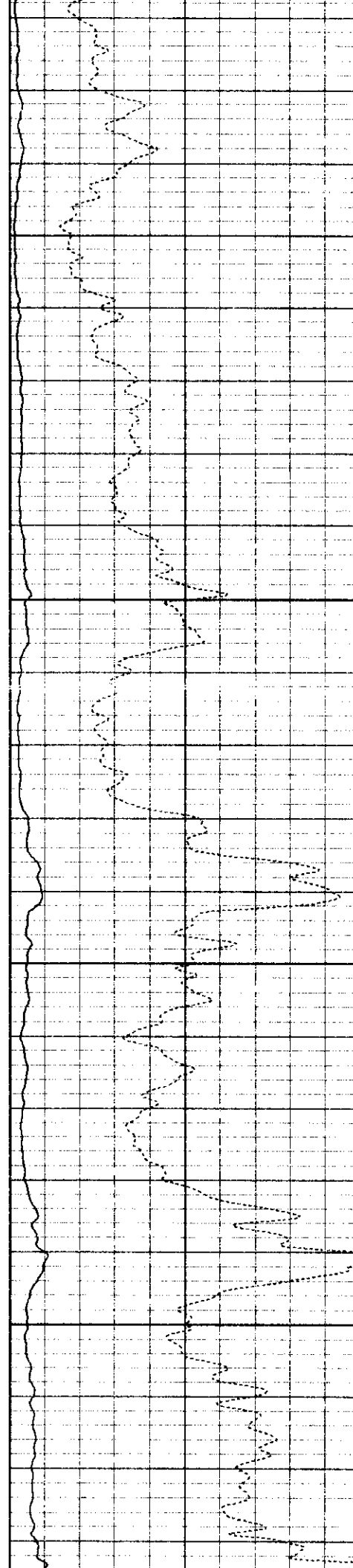
3900

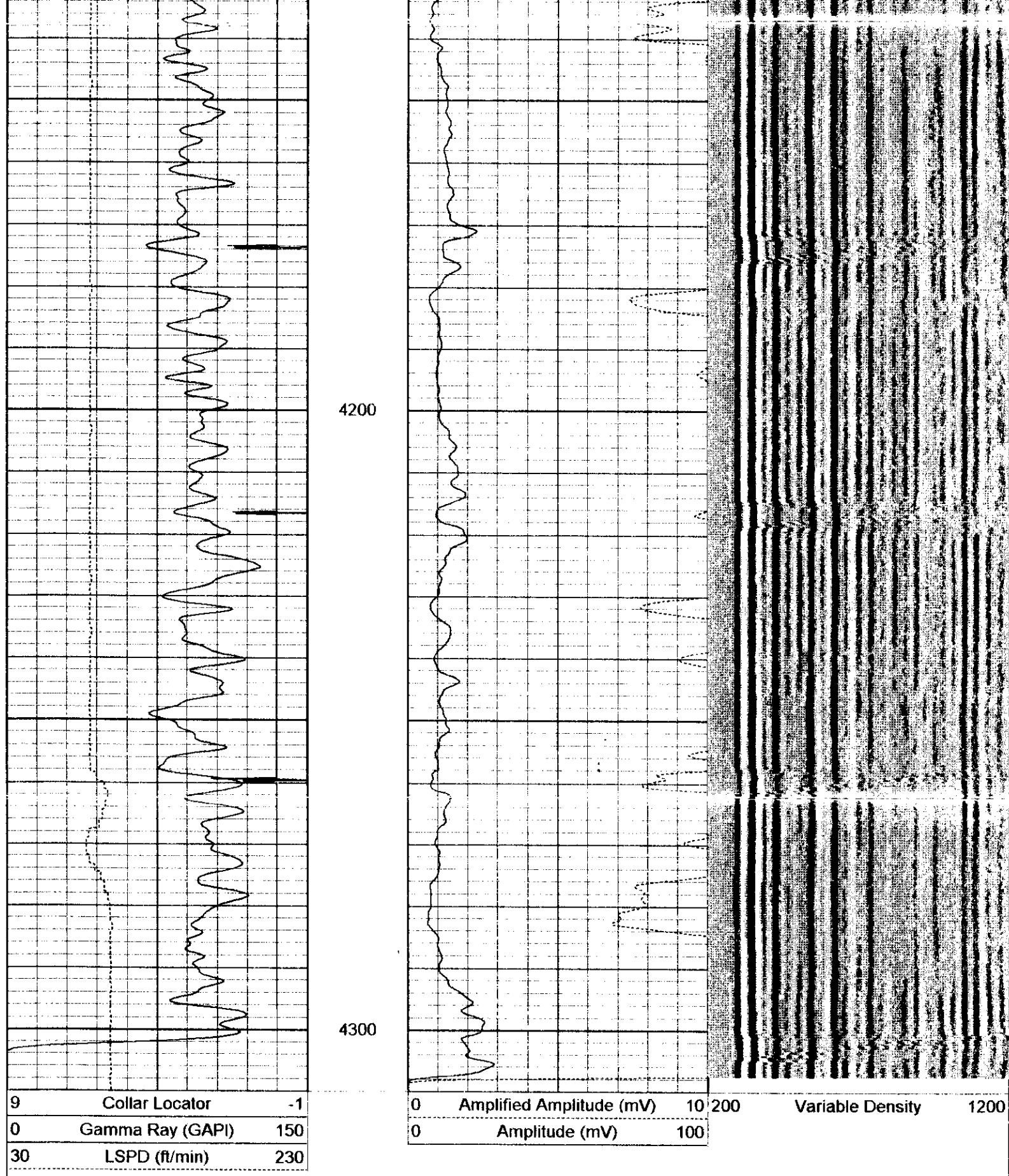




4000

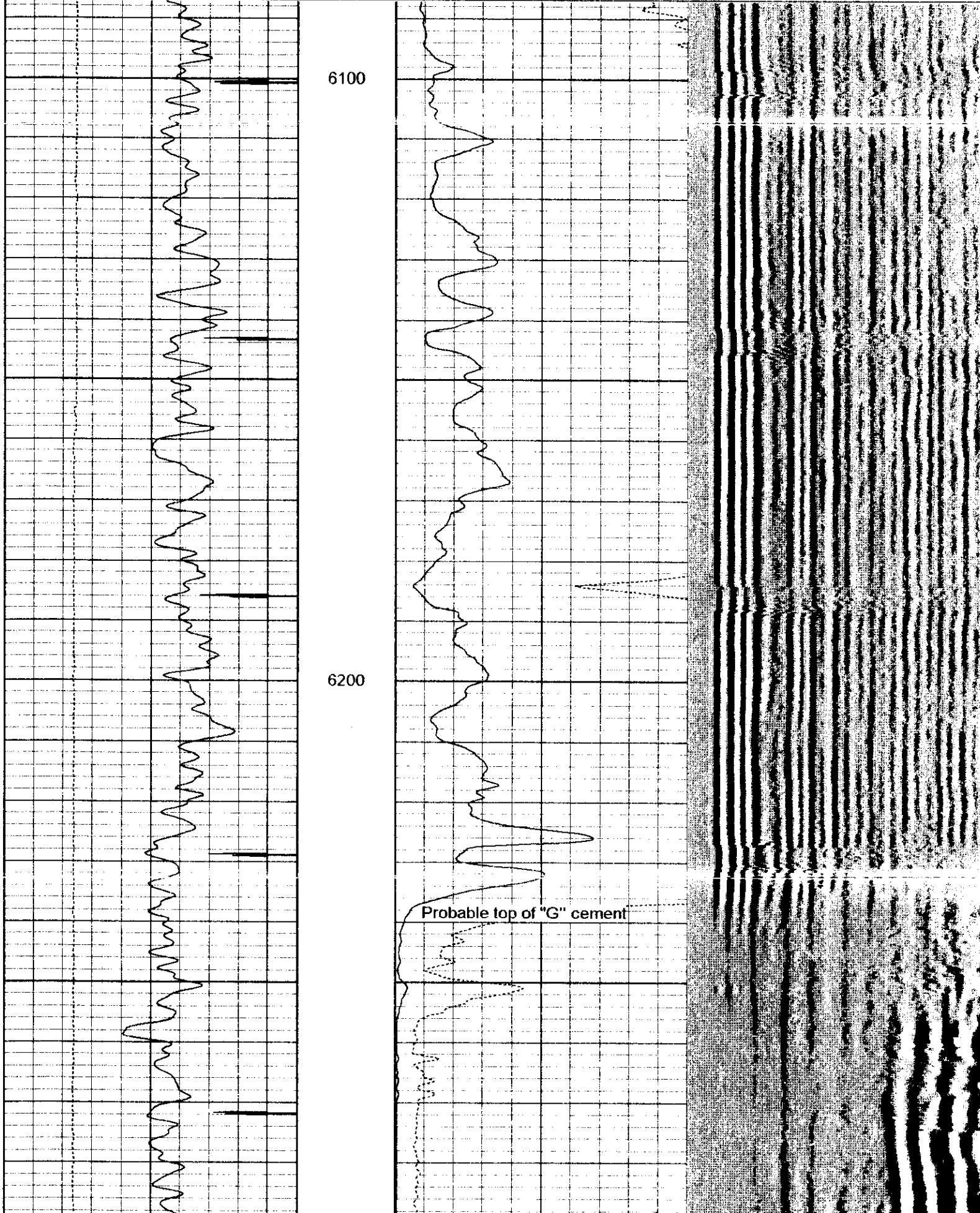
4100

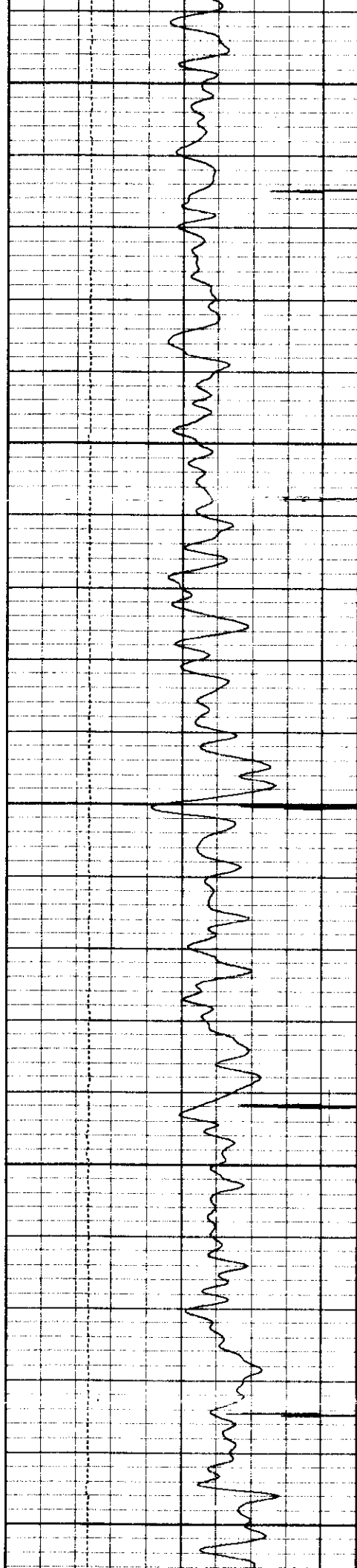




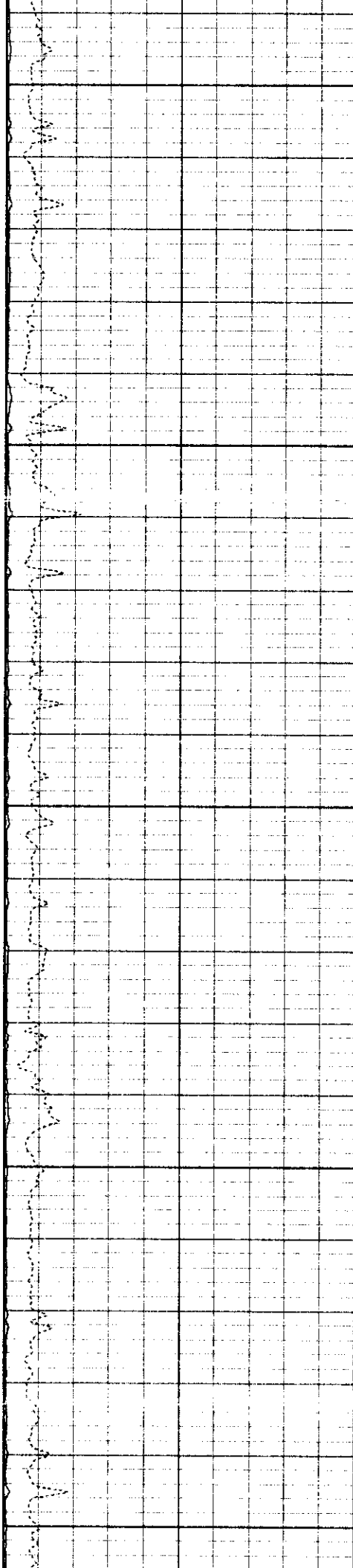
Database File: pdc4313.db
 Dataset Pathname: pass2
 Presentation Format: cbl01.prs
 Dataset Creation: Mon Nov 05 09:36:00 2001 by Log VER_5.4
 Charted by: Depth in Feet scaled 1:240

9	Collar Locator	-1	0	Amplified Amplitude (mV)	10	200	Variable Density	1200
0	Gamma Ray (GAPI)	150	0	Amplitude (mV)	100			
30	LSPD (ft/min)	230						

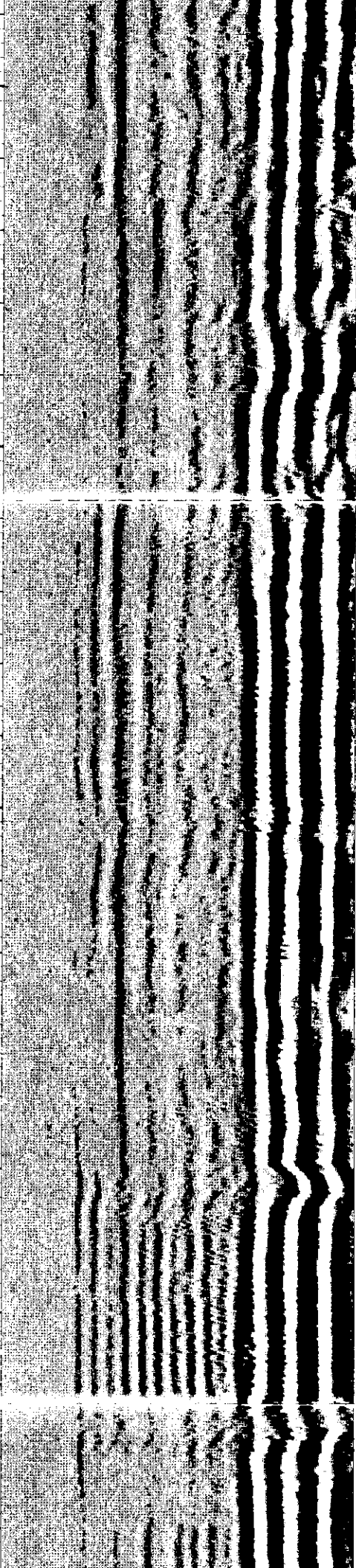




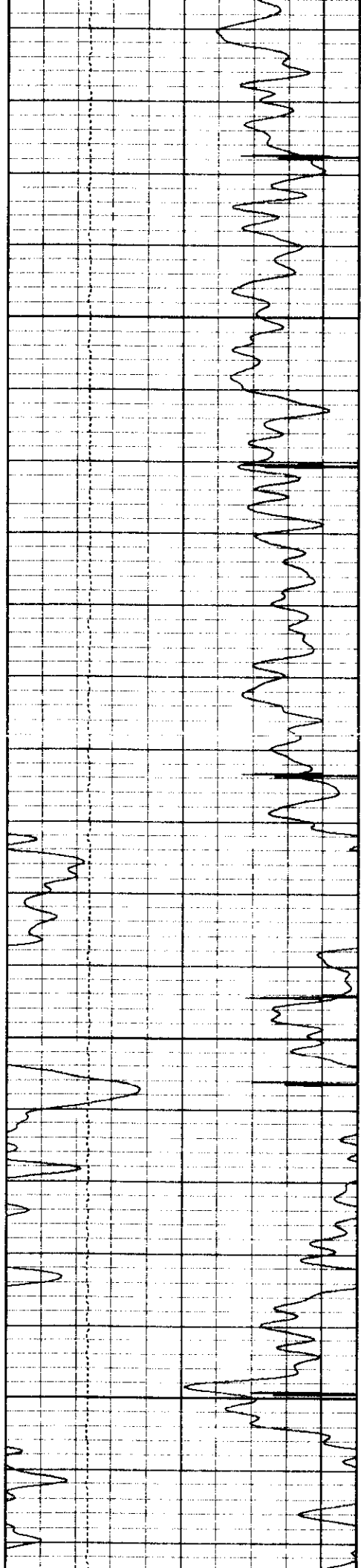
6300



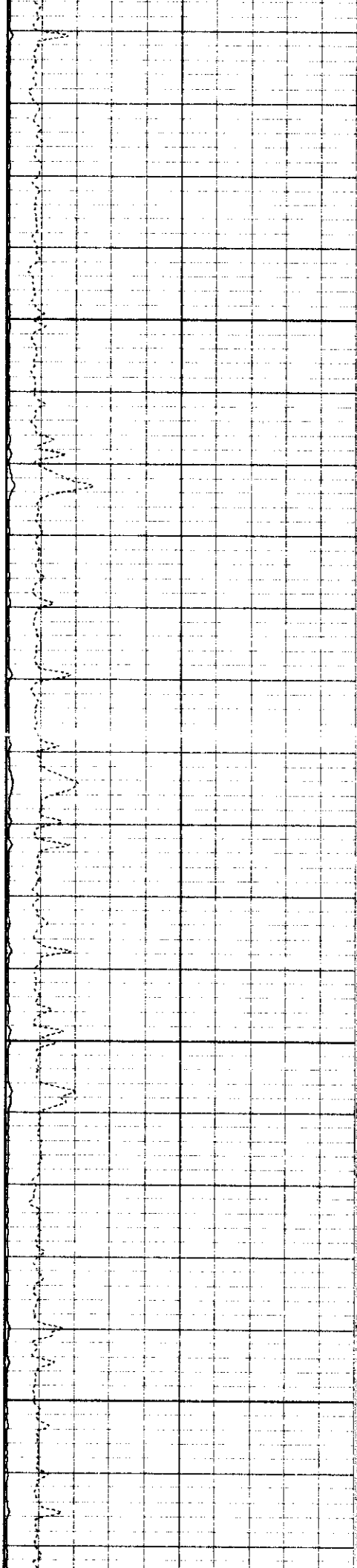
6400



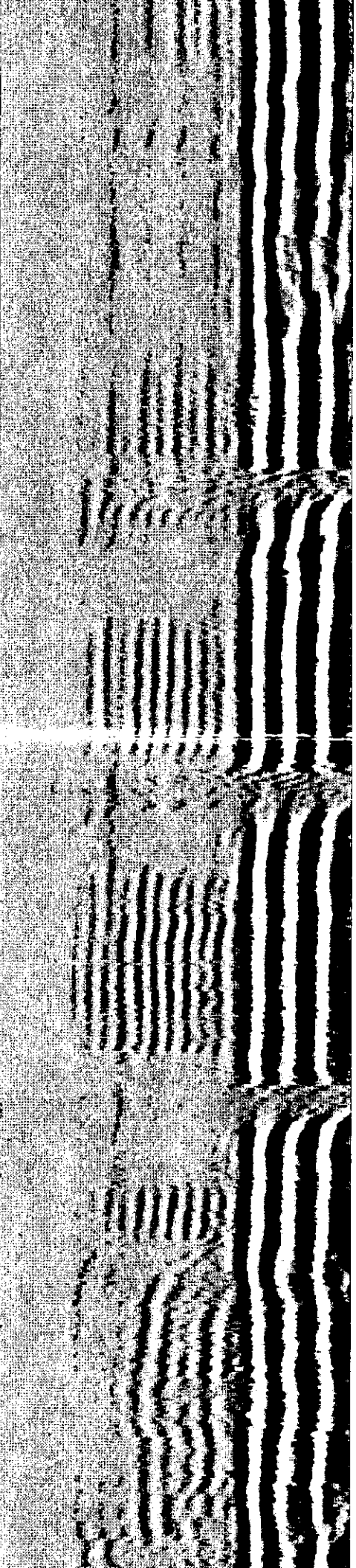
6500

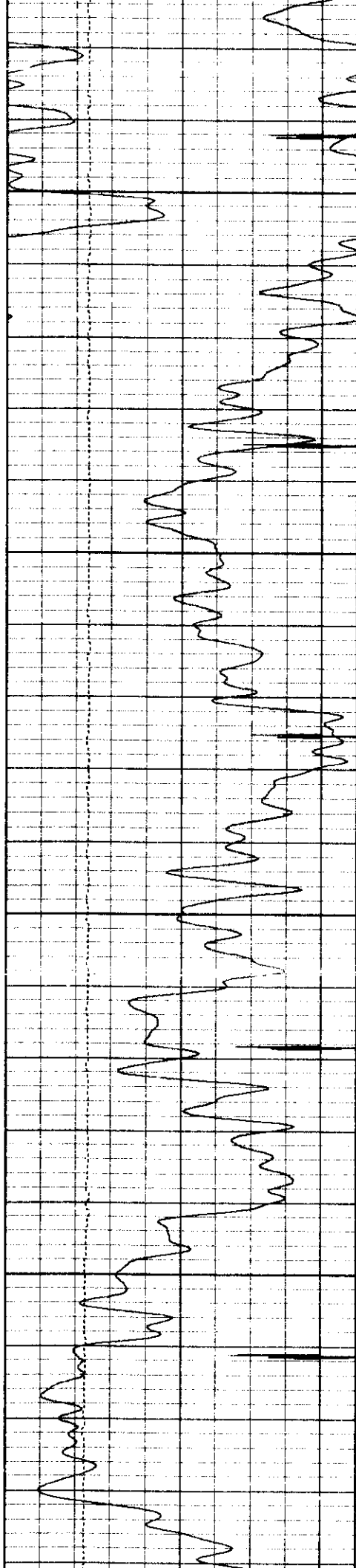


6600



6700





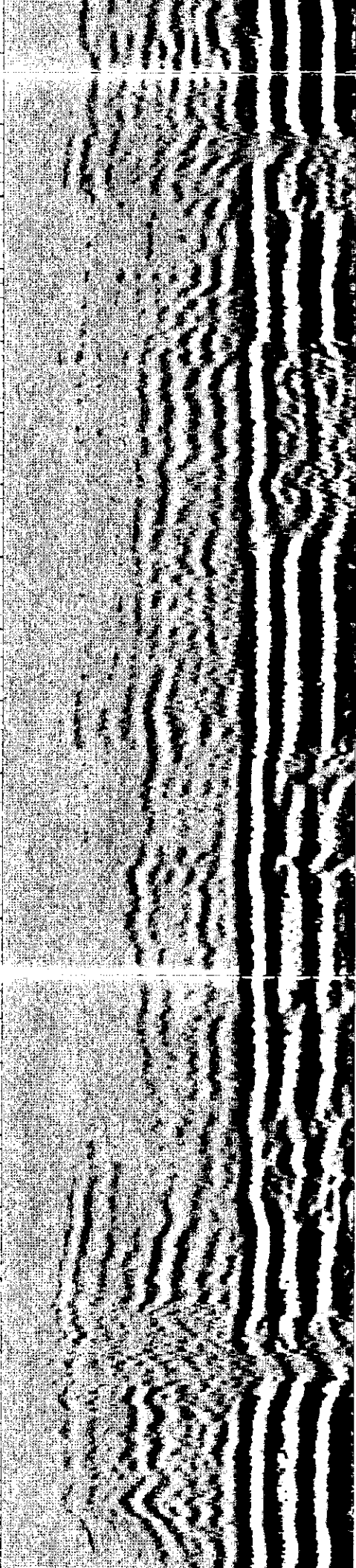
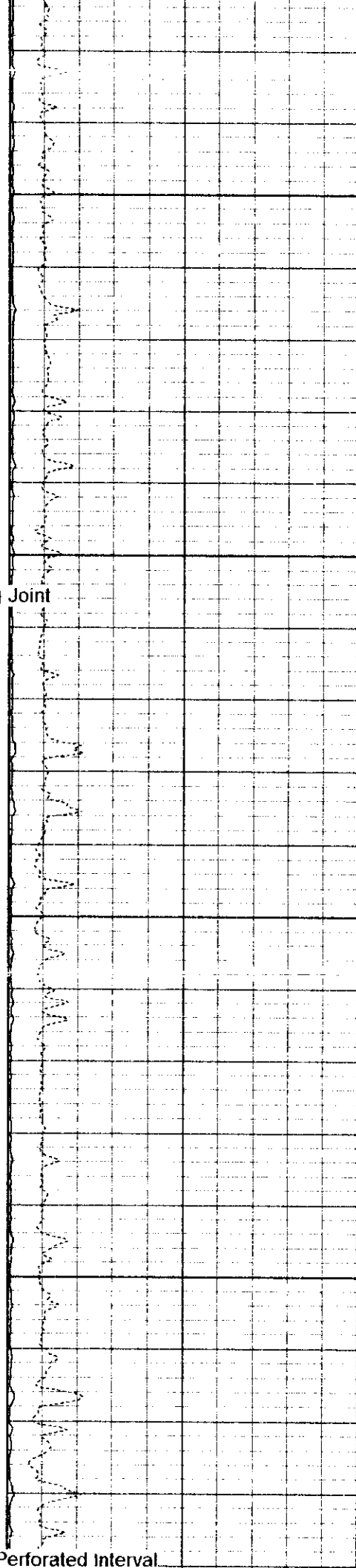
6800

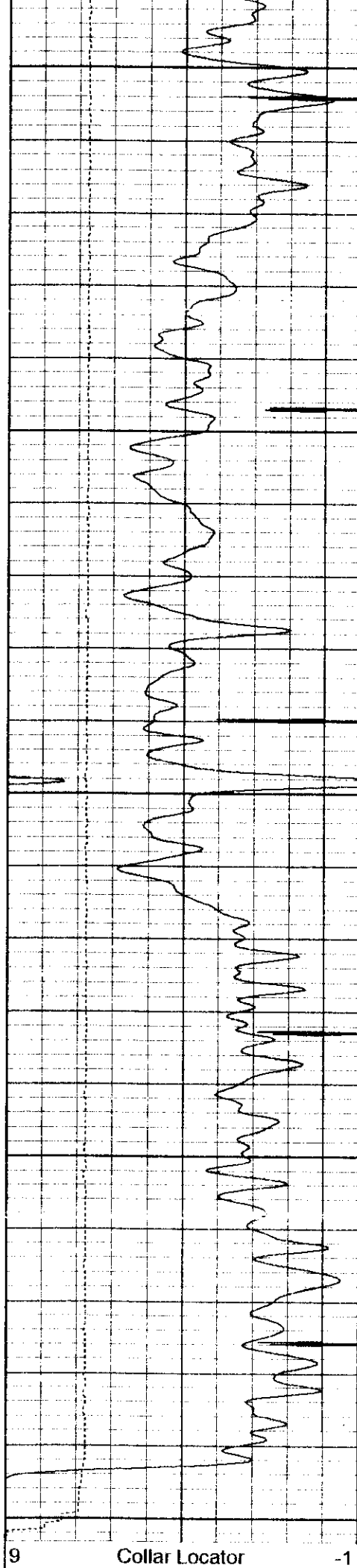
← Flag Joint

6900

0000

← Perforated Interval

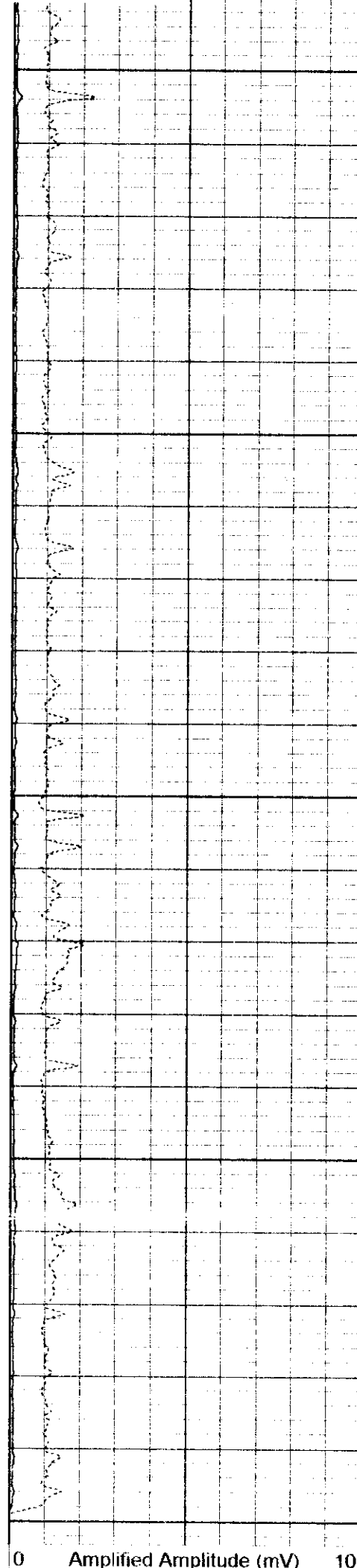




7000

7100

9 Collar Locator -1

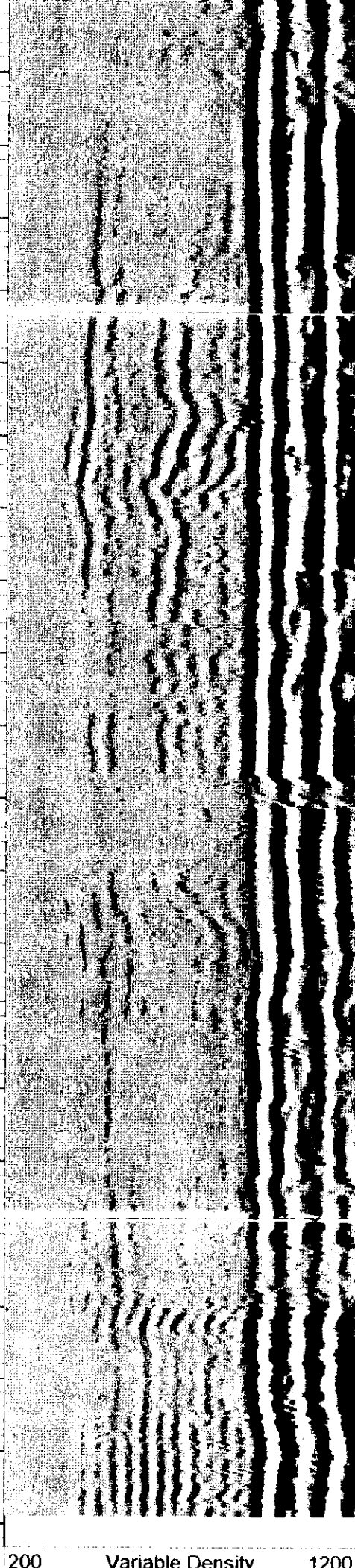


0 Amplified Amplitude (mV)

10 200

Variable Density

1200



0	Gamma Ray (GAPI)	150
30	LSPD (ft/min)	230

0	Amplitude (mV)	100
---	----------------	-----