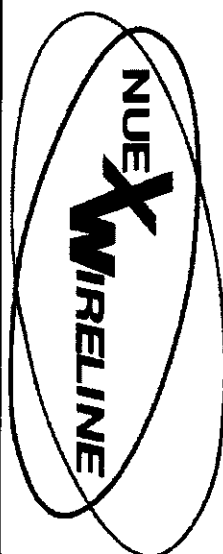


07/11/01

Wireline



GAMMA RAY / CCL CEMENT BOND VDL

Company Petroleum Development Corporation
Well Carmichael 43-26
Field Wattenberg
County Weld
State Colorado

Company Petroleum Development Corporation
Well Carmichael 43-26
Field Wattenberg
County Weld
State Colorado

Location: API #: 05-123-25023-00

1846' FSL & 470' FEL
NE / SE

Other Services
perforate

SEC 26 TWP 7N RGE 63W

Permanent Datum GL KB Elevation 4740'

Log Measured From KB

Drilling Measured From KB

Elevation
K.B. 4750'
D.F. 4749'
G.L. 4740'

Date November 16, 2007

Run Number 1

Depth Driller 6950'

Depth Logger 6802'

Bottom Logged Interval 6799'-5100'

Top Log Interval 5100'-0

Open Hole Size

Type Fluid water

Density / Viscosity

Max. Recorded Temp. 225 F

Estimated Cement Top

Time Well Ready

Time Logger on Bottom

Equipment Number T2 TEK2/TITAN1 TEKQCL1

Location HWY392+WCR71.N3/10.W1/10.Ninto.

Recorded By R Meisner

Witnessed By Dan Green

Borehole Record				Tubing Record			
Run Number	Bit	From	To	Size	Weight	From	To

Casing Record	Size	Wgt/Ft	Top	Bottom
Surface String				
Prot. String				
Production String	4.5"			
Liner				

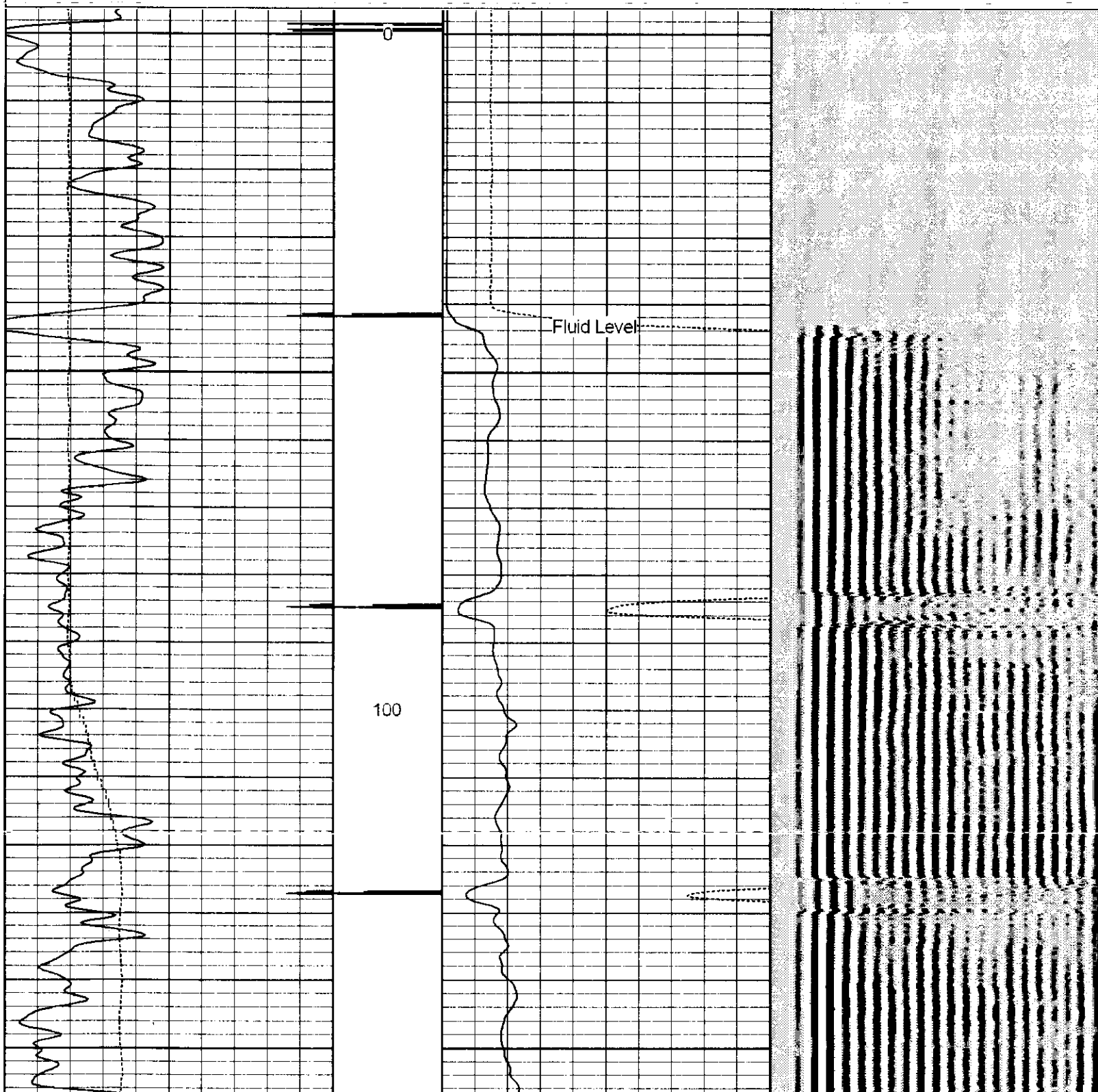
Comments

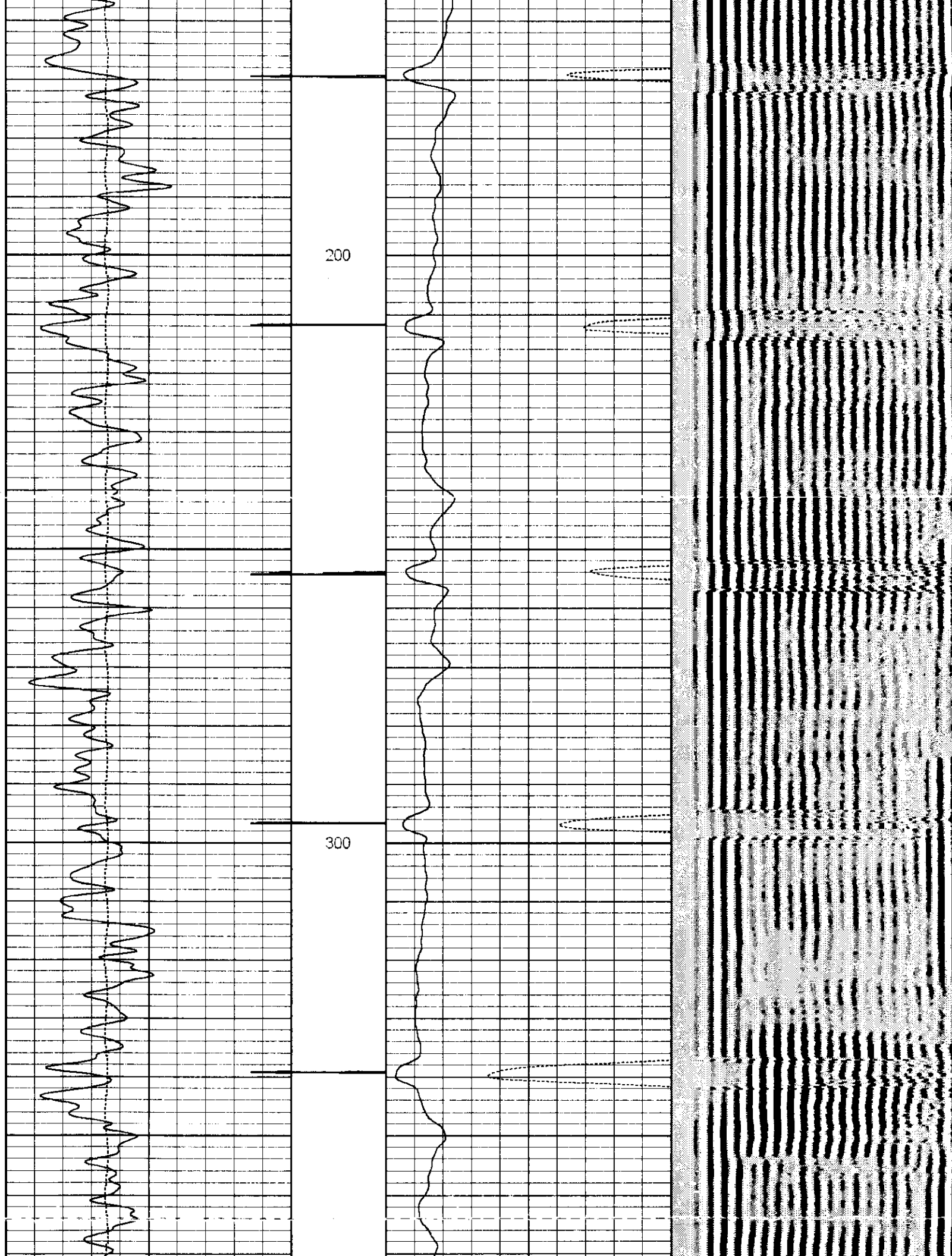
THANK-YOU FOR USING "NUEX" WIRELINE SERVICES INC. !!!
STERLING: 970.526.1084 FAX: 970.526.1085
FORT LUPTON: 970.785.0158 FAX: 970.785.0159

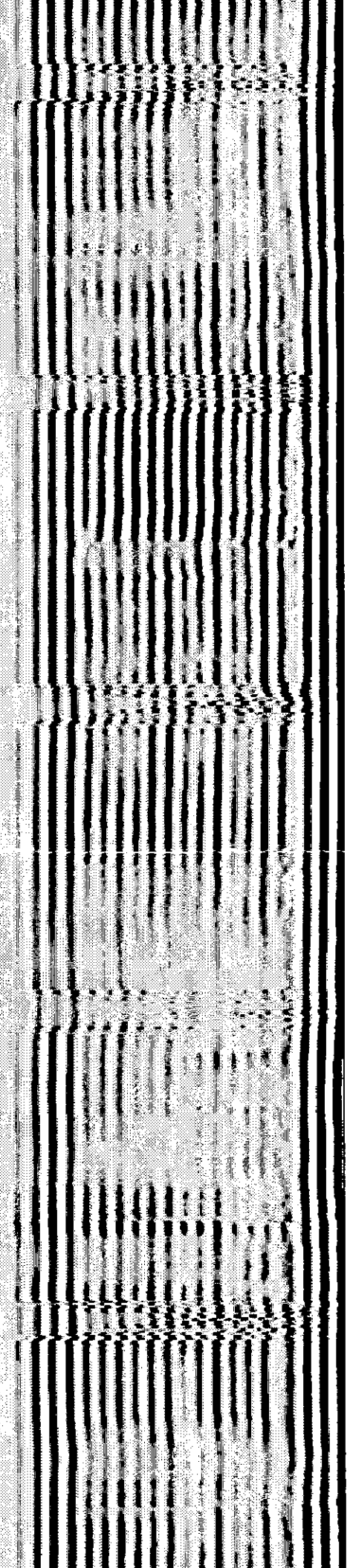
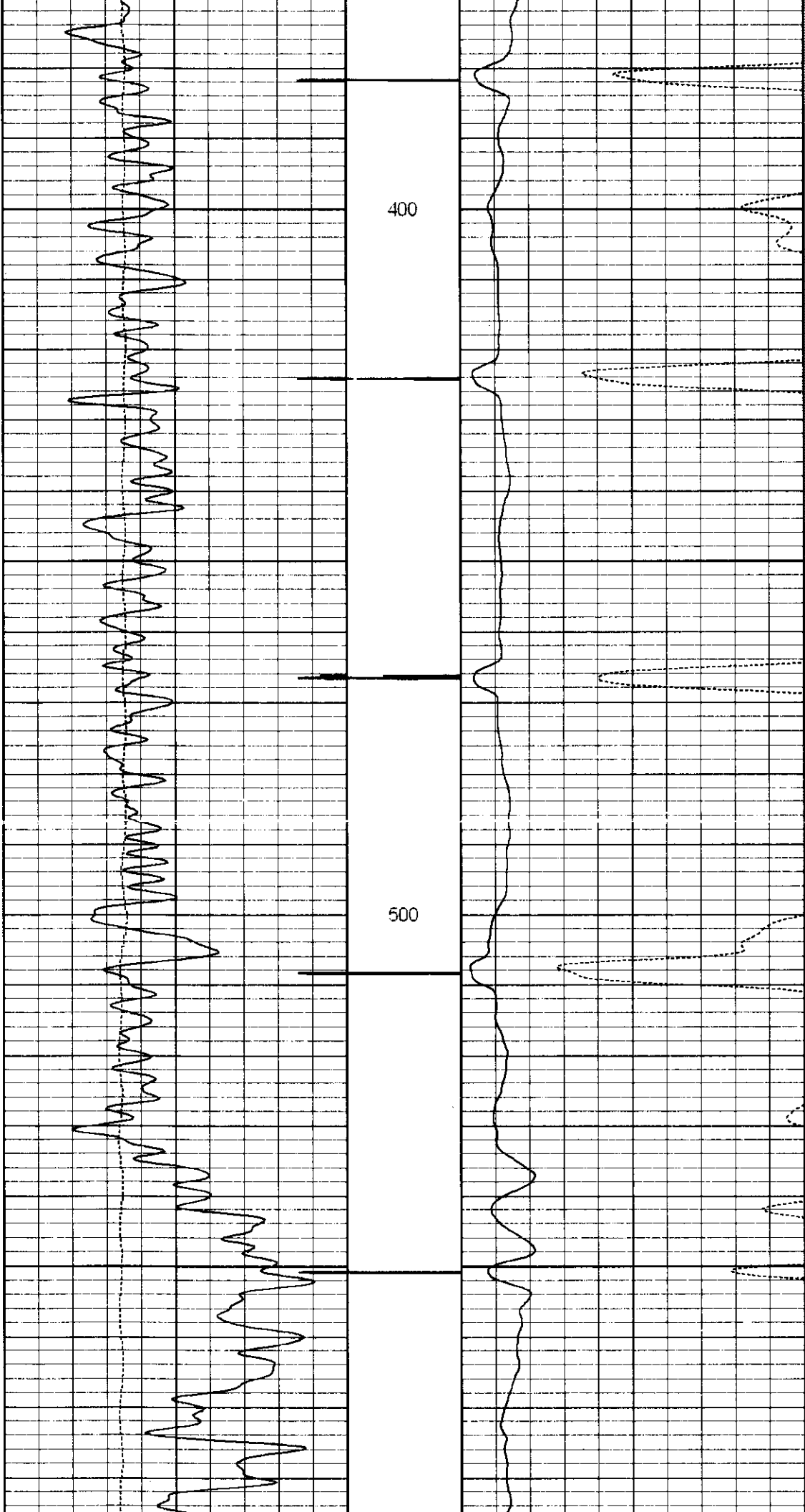
All interpretations are opinions based on inferences from electrical or other measurements and we cannot and do not guarantee the accuracy or correctness of any interpretation, and we shall not, except in the case of gross or willful negligence on our part, be liable or responsible for any loss, costs, damages, or expenses incurred or sustained by anyone resulting from any interpretation made by any of our officers, agents or employees. These interpretations are also subject to our general terms and conditions set out in our current Price Schedule.

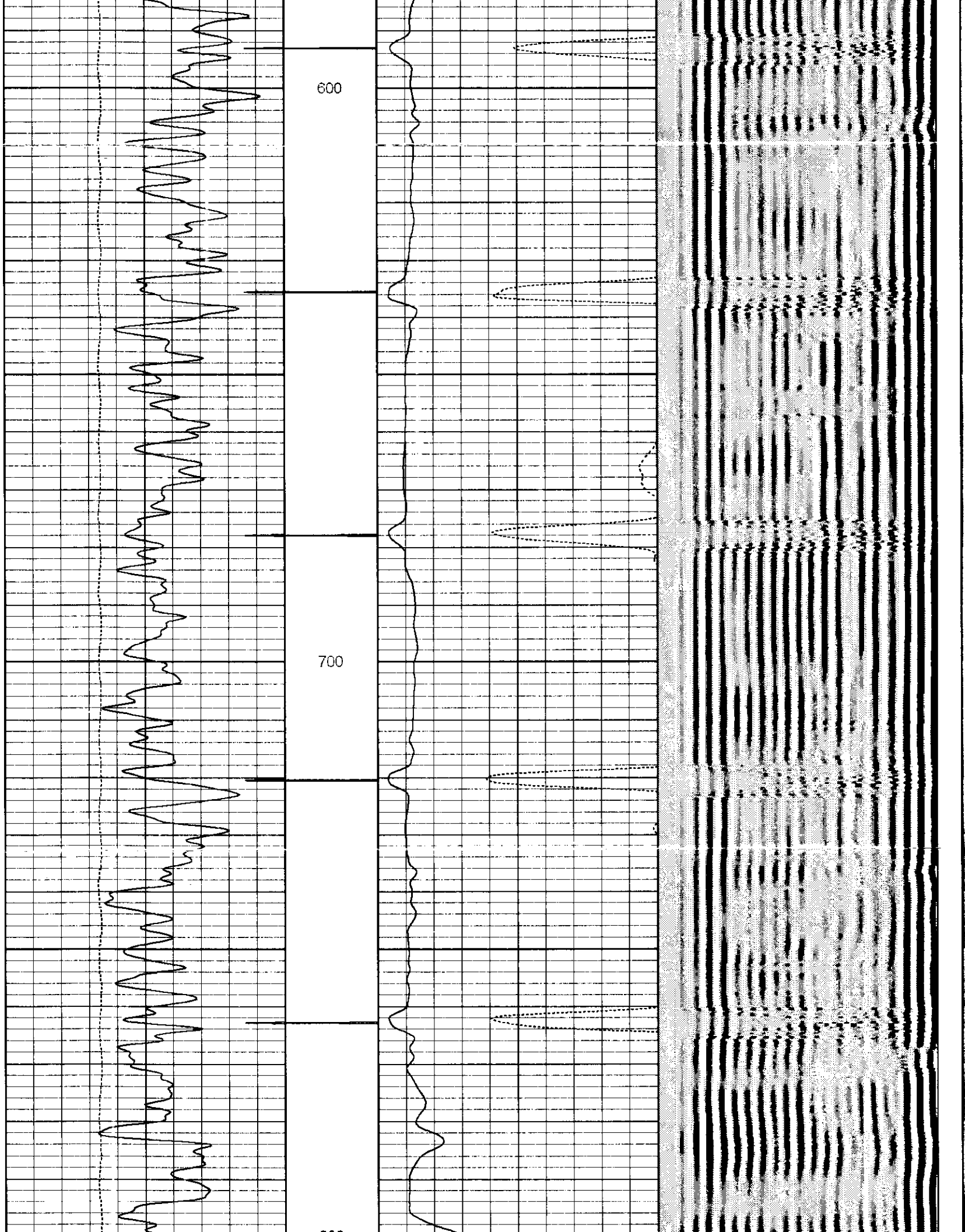
Database File: pdoc4326.db
 Dataset Pathname: pass4
 Presentation Format: bond
 Dataset Creation: Fri Nov 16 10:12:54 2007 by Log Std Casedhole 07051
 Charted by: Depth in Feet scaled 1:240

9	CCL	0	1	CCL	0	0	Amplitude (Pipe Bond) (mV)	100	300	Variable Density	1200
30	Gamma Ray (GAPI)	130				0	Amplified Amplitude (mV)	10			
-30	Line Speed (ft/min)	-230									



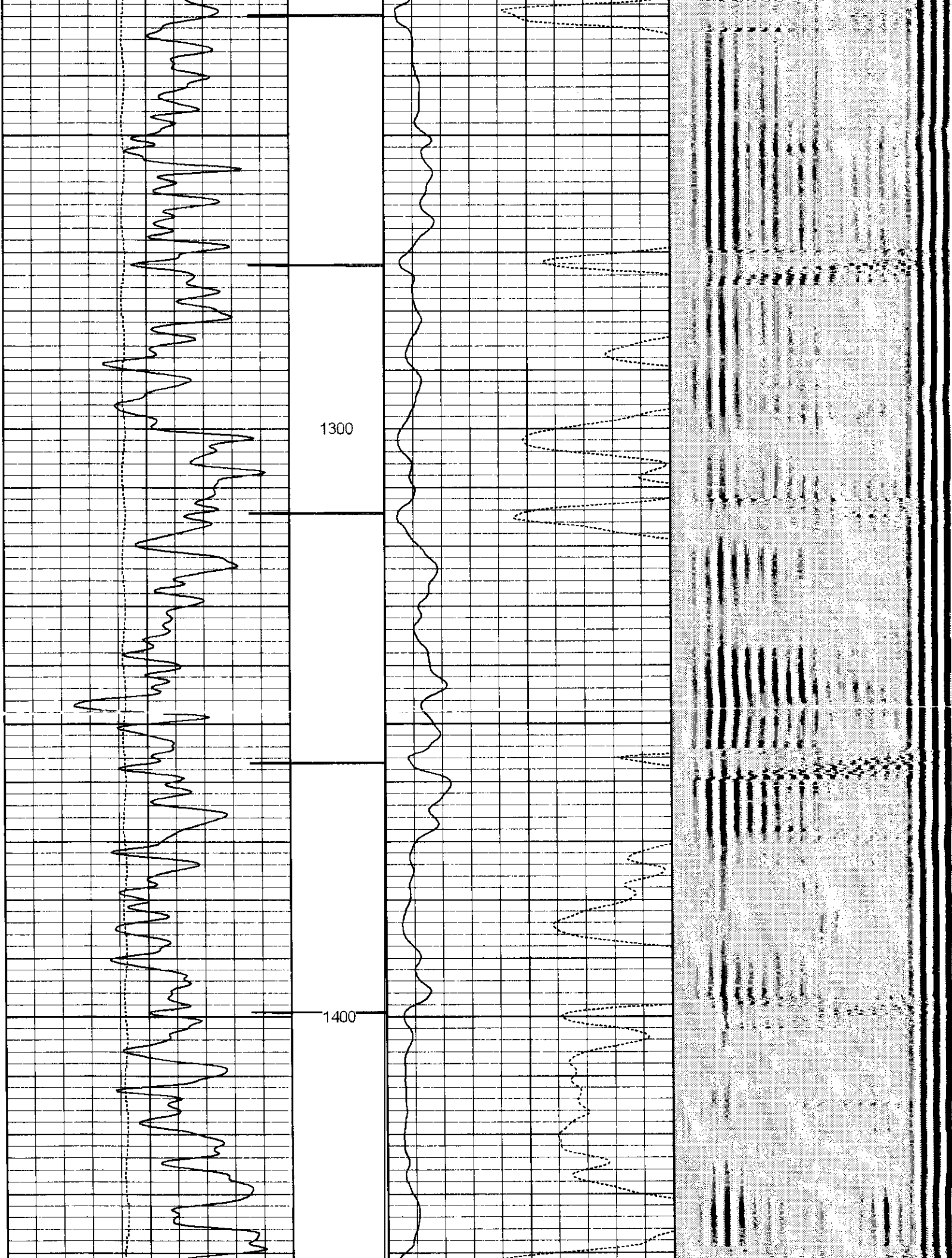


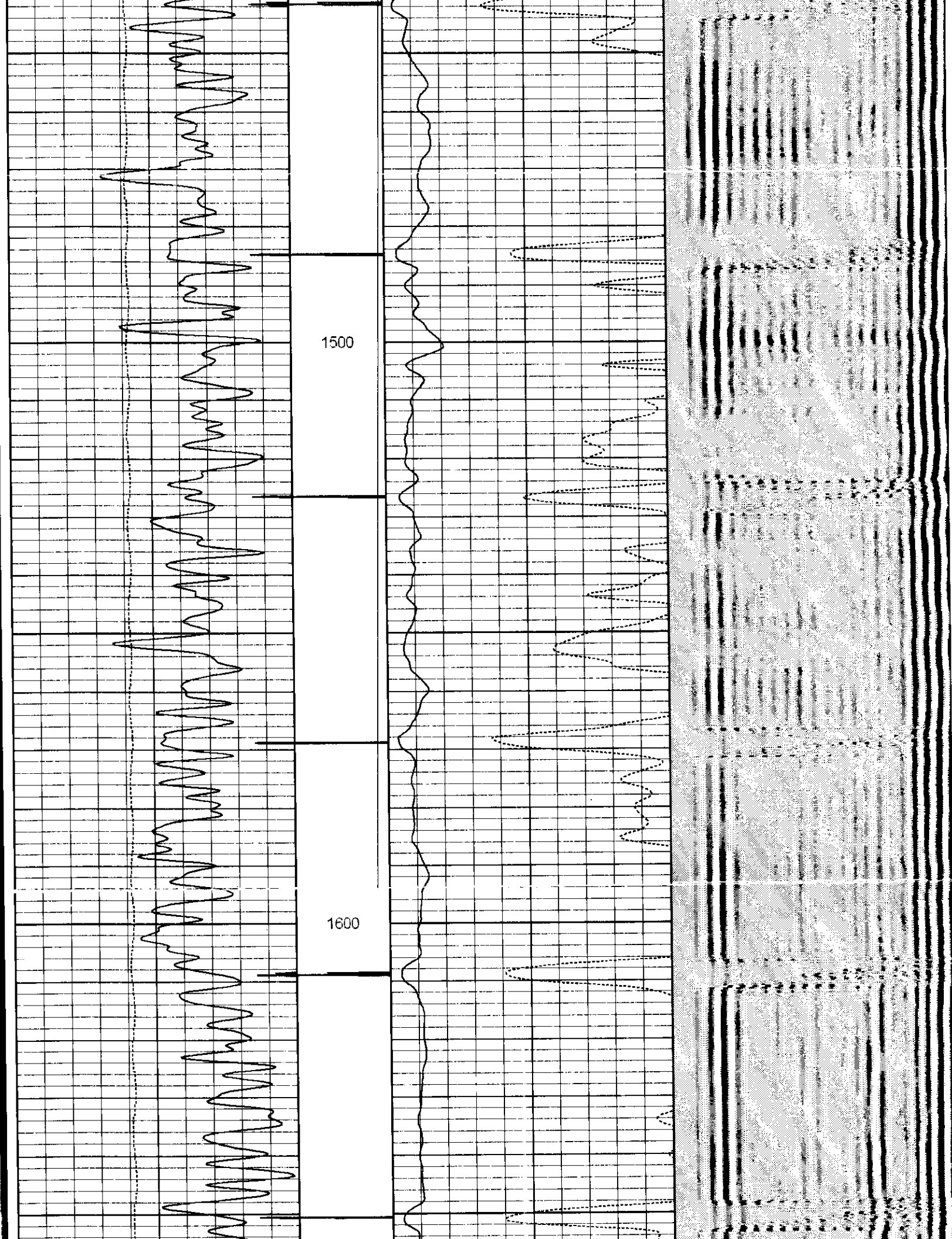


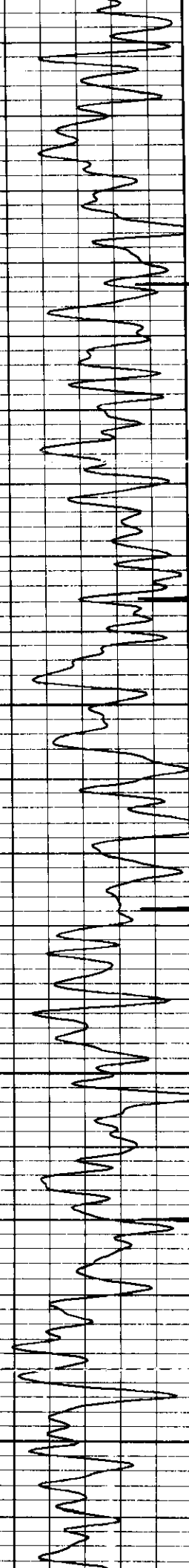






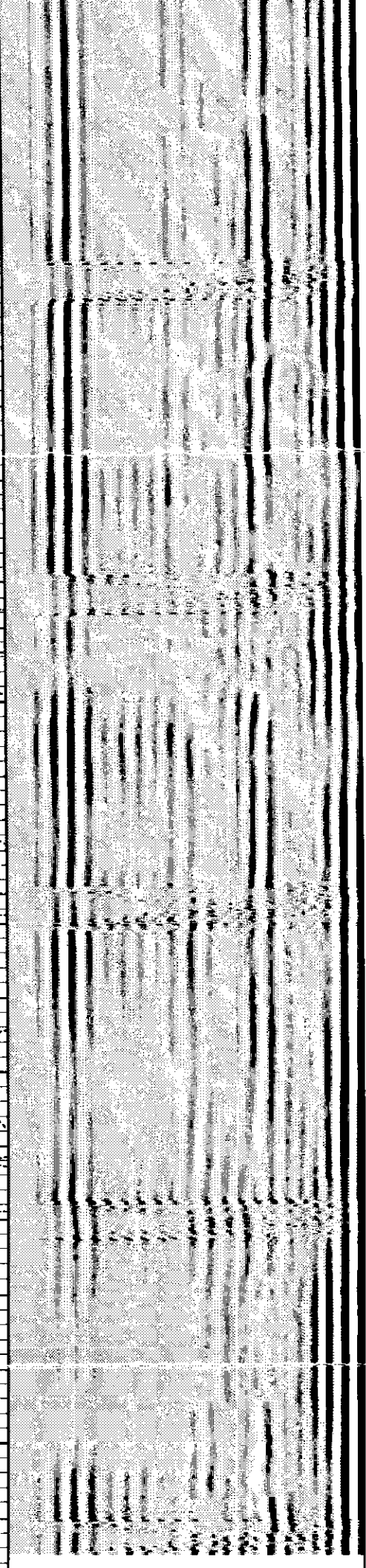
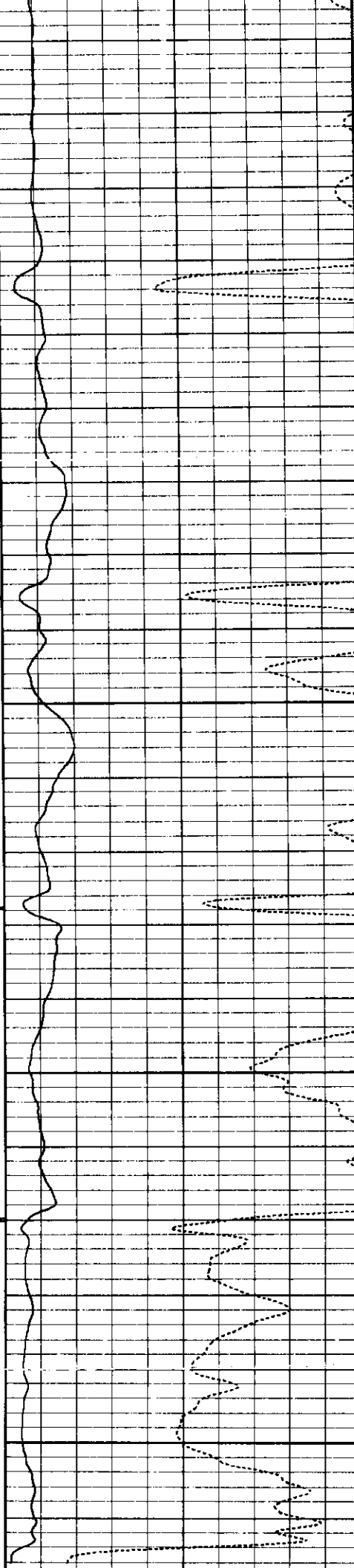


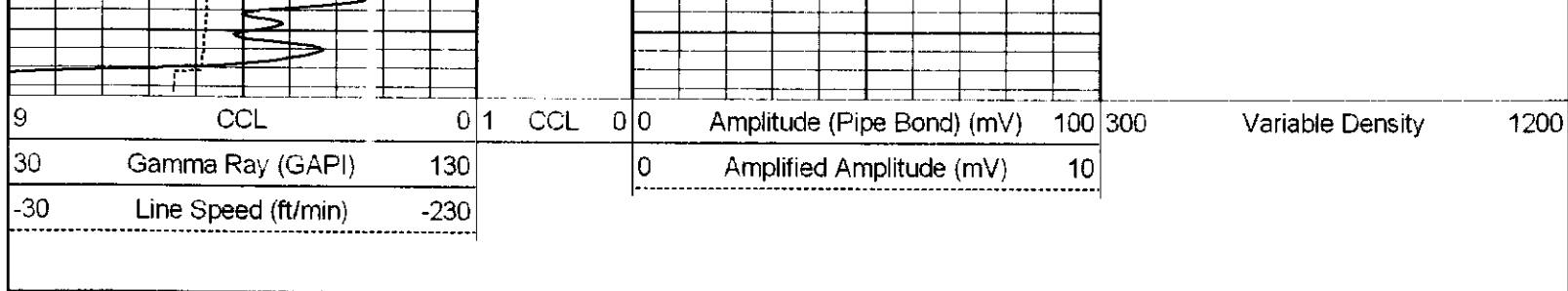




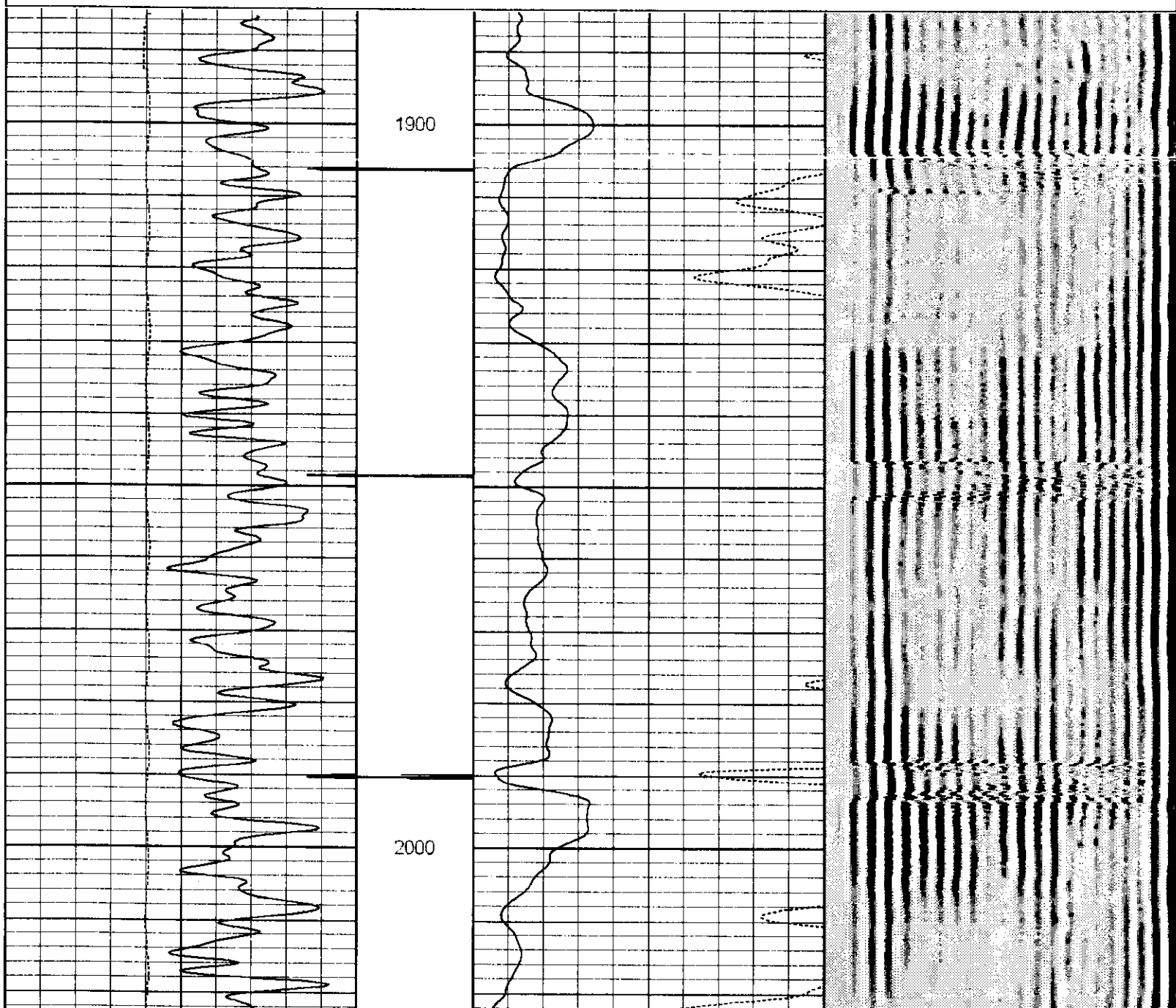
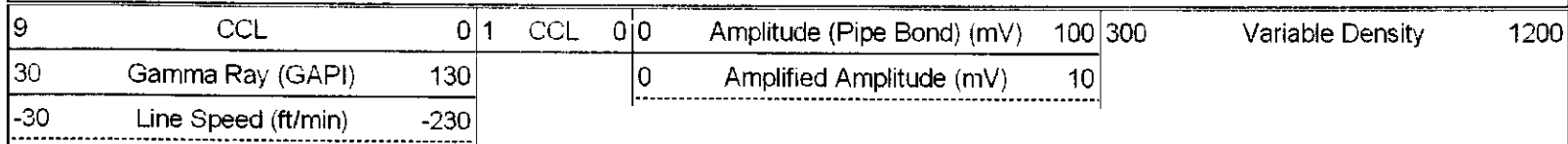
1700

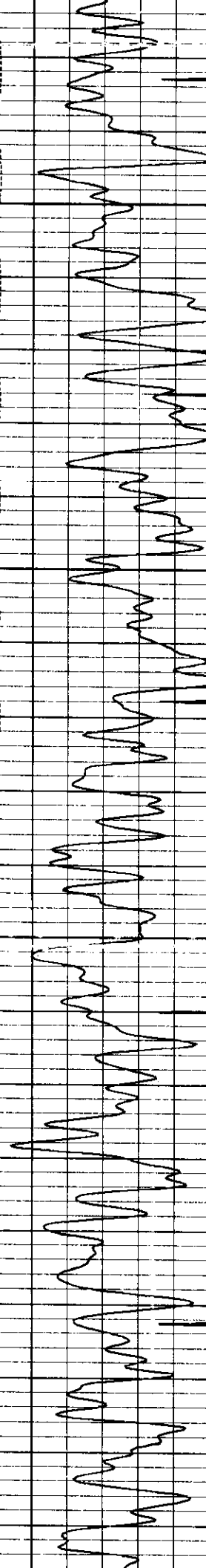
1800





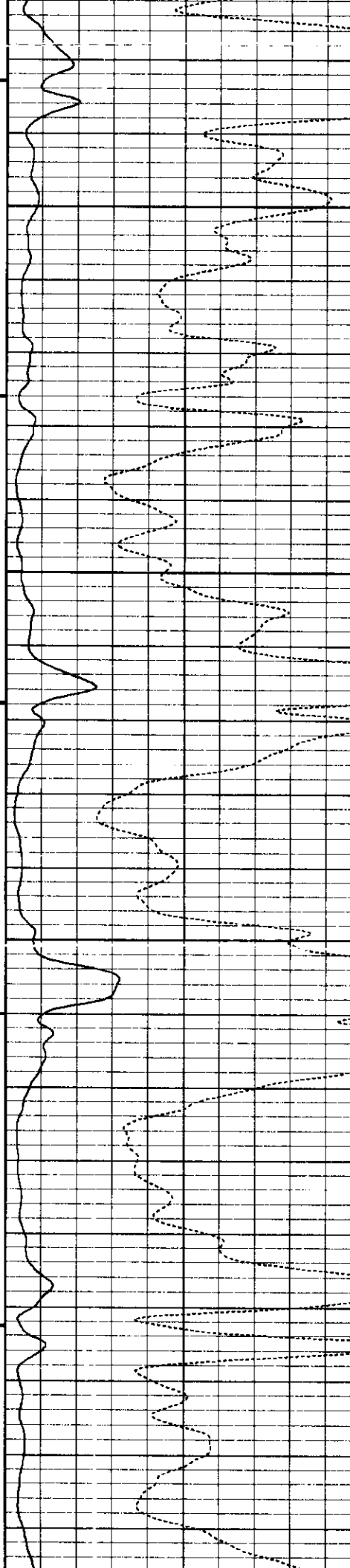
Database File: pdcc4326.db
 Dataset Pathname: pass3
 Presentation Format: bond
 Dataset Creation: Fri Nov 16 09:42:30 2007 by Log Std Casedhole 07051
 Charted by: Depth in Feet scaled 1:240

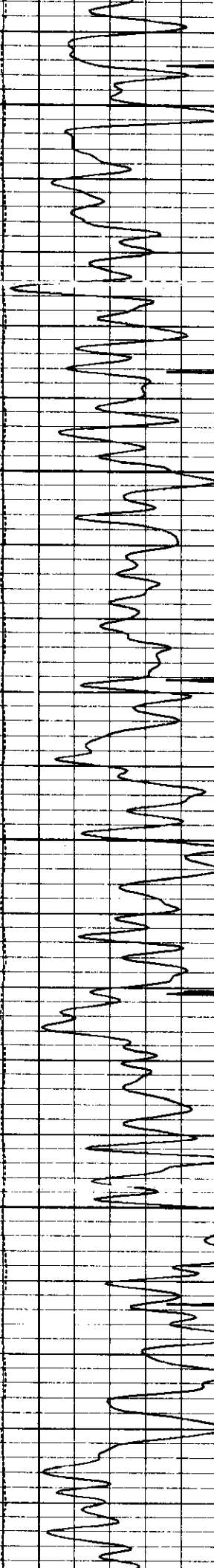




2100

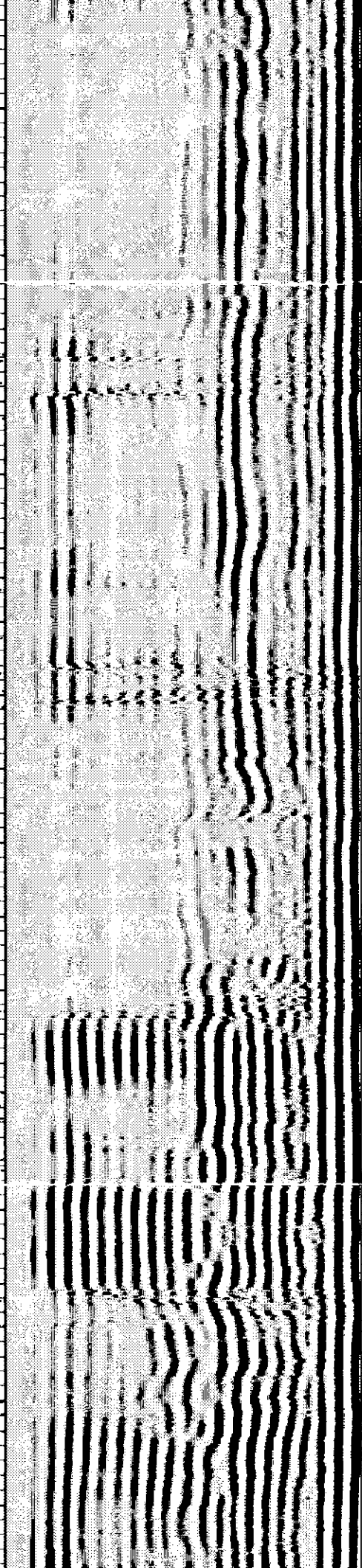
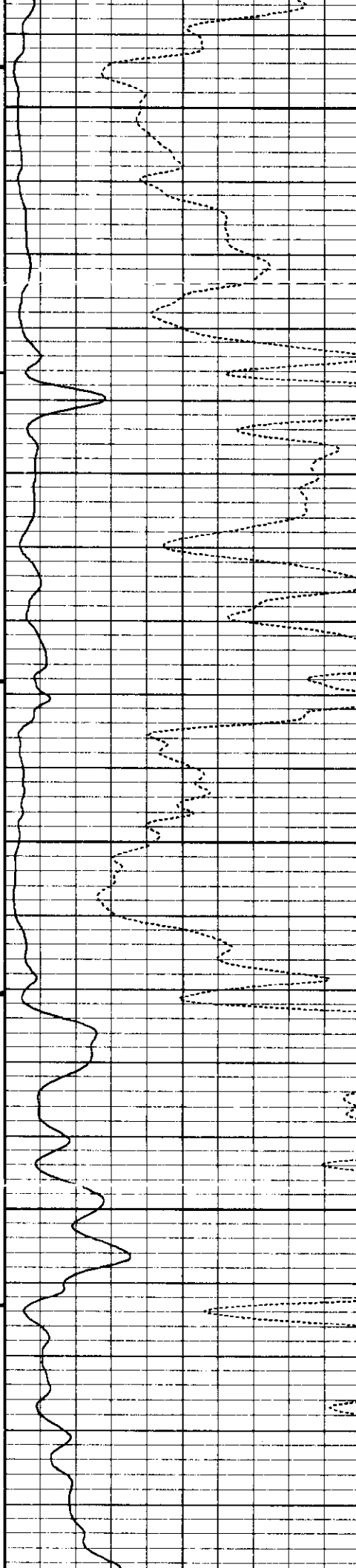
2200

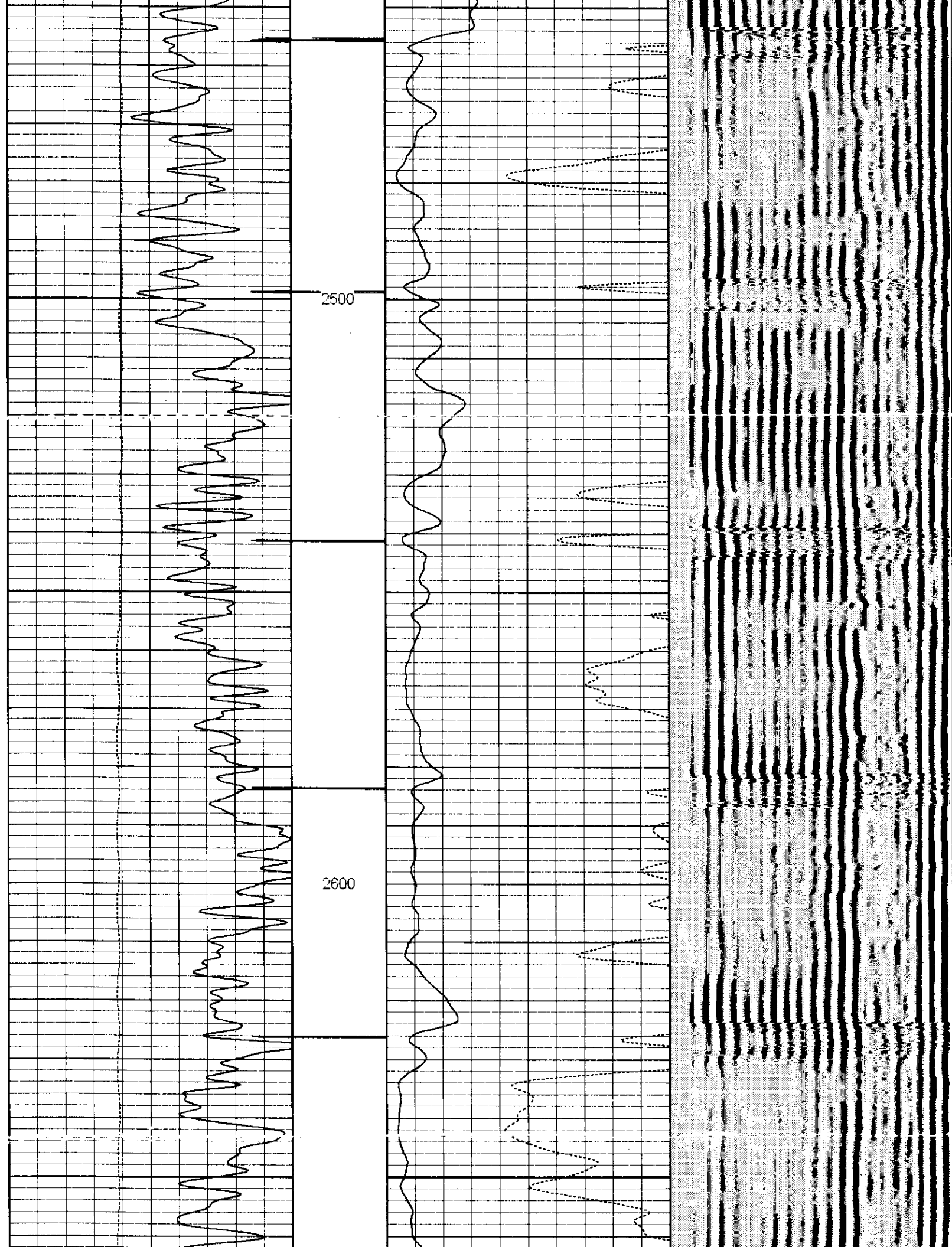


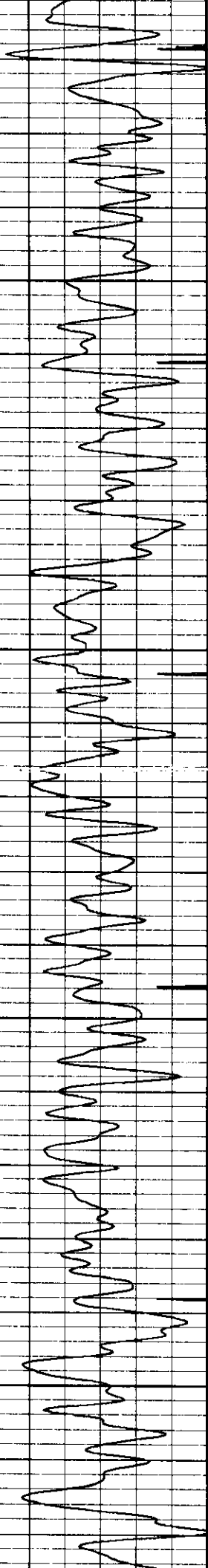


2300

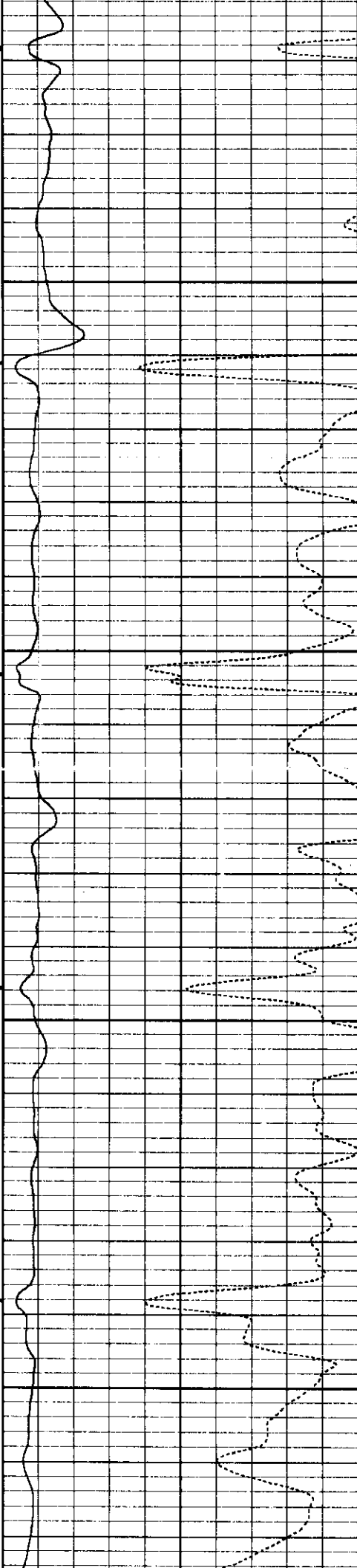
2400



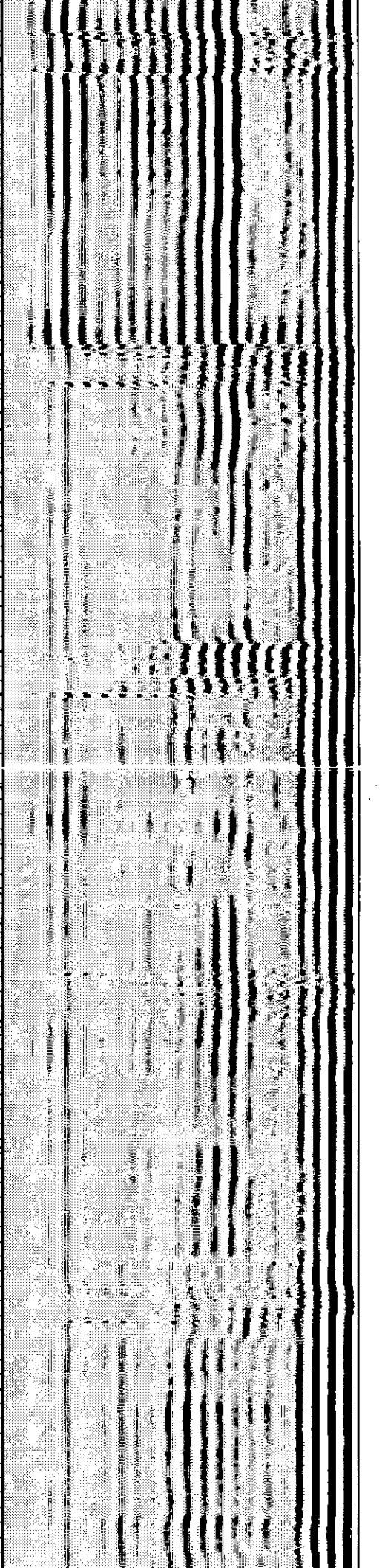
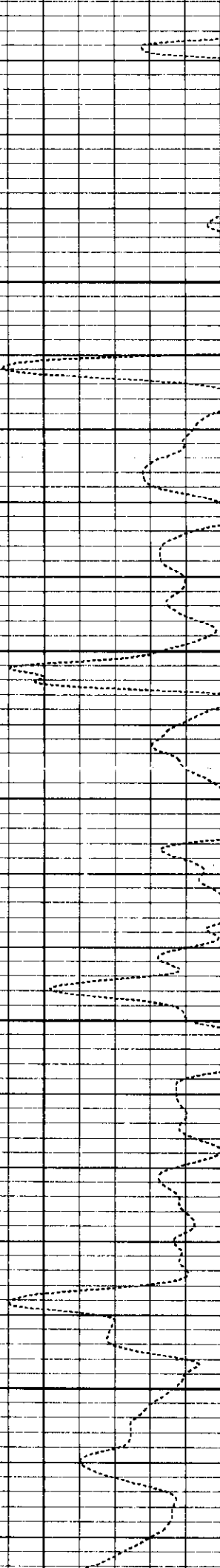


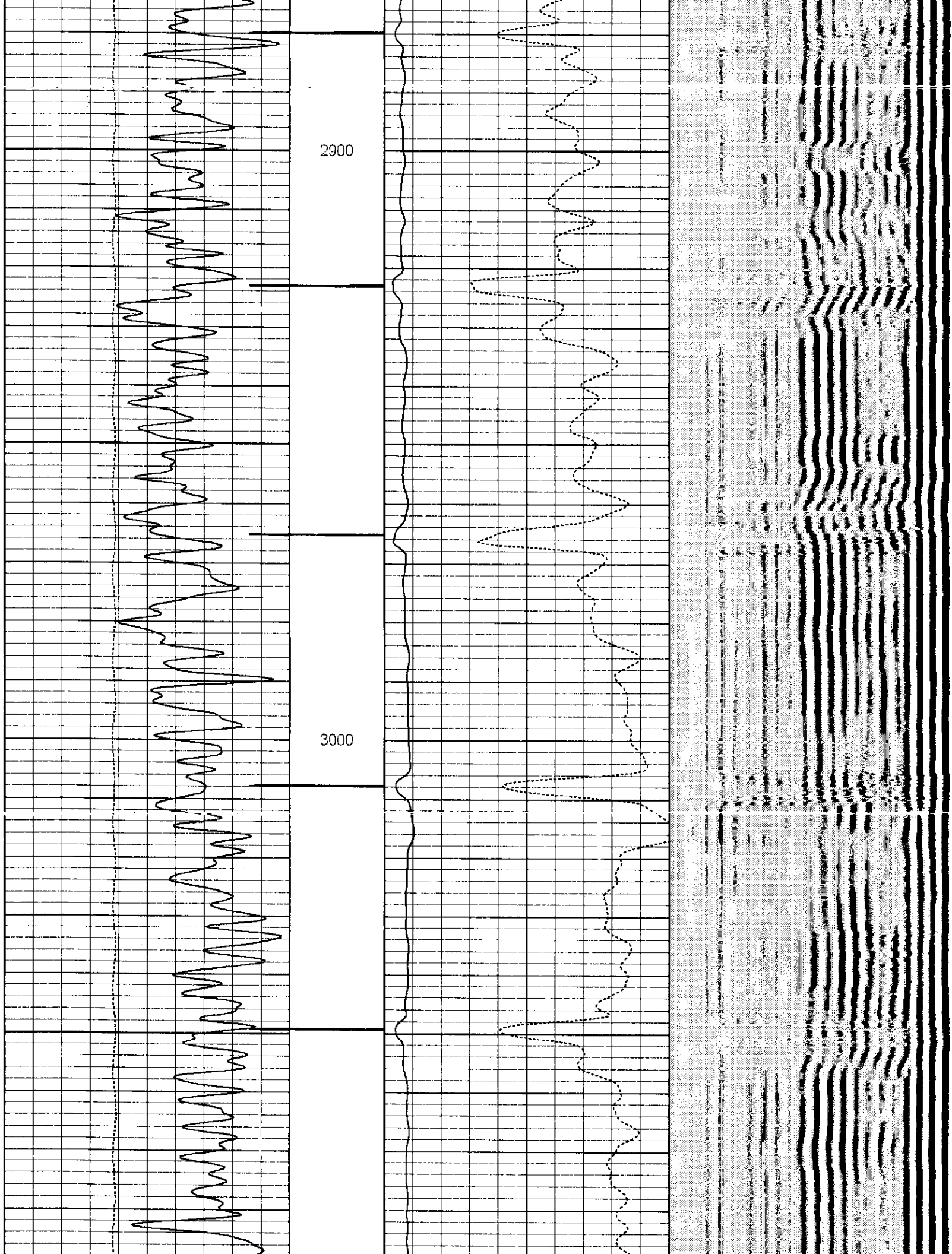


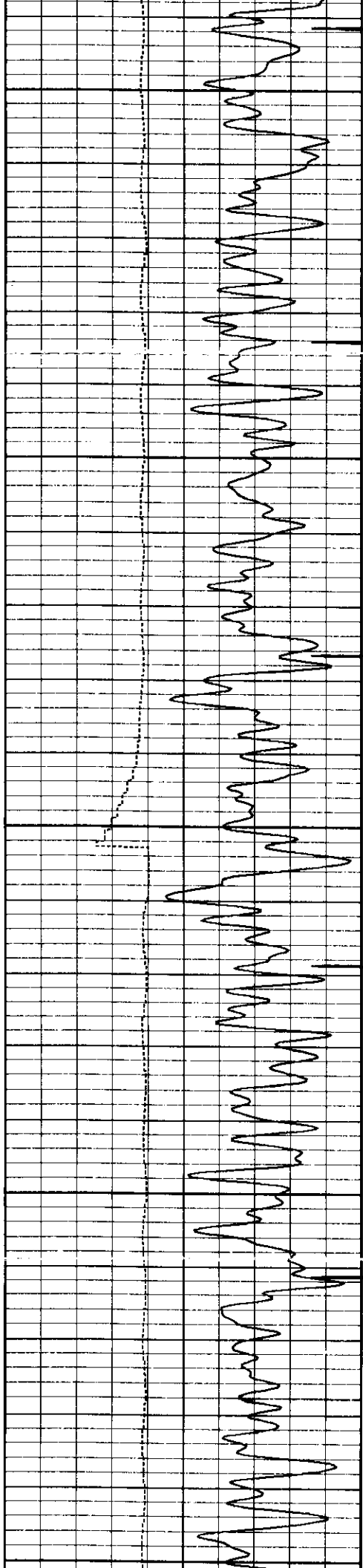
2700



2800



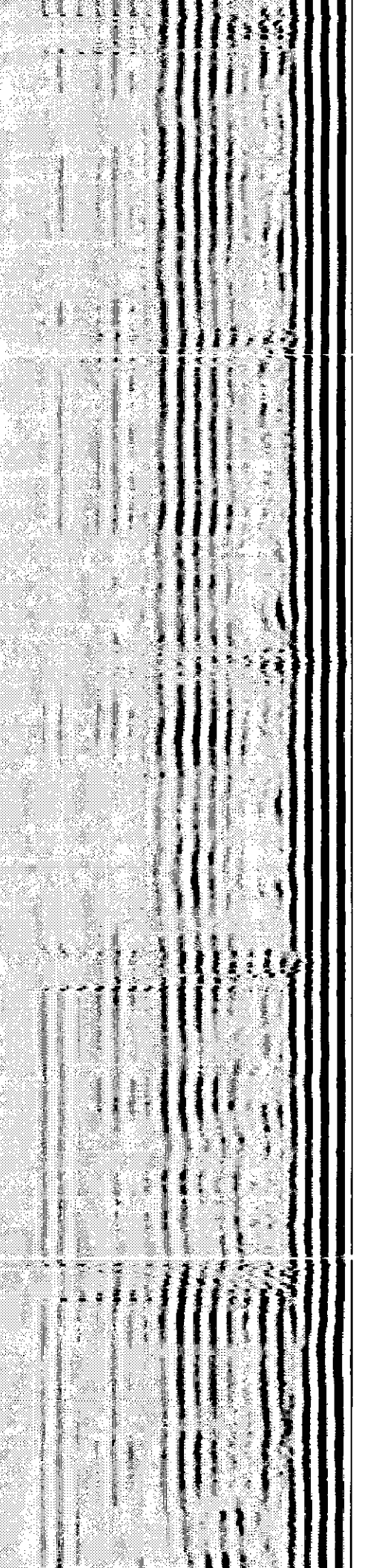
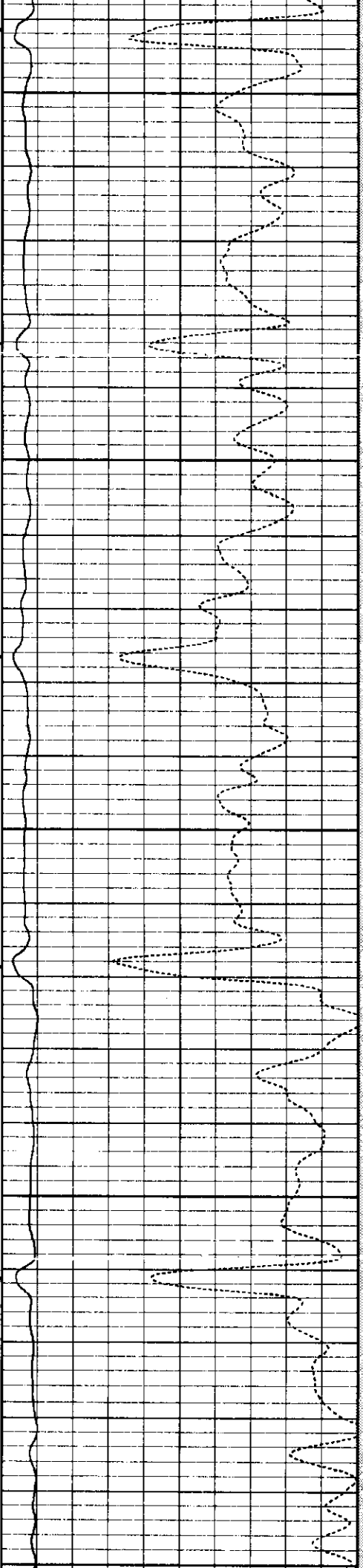




3100

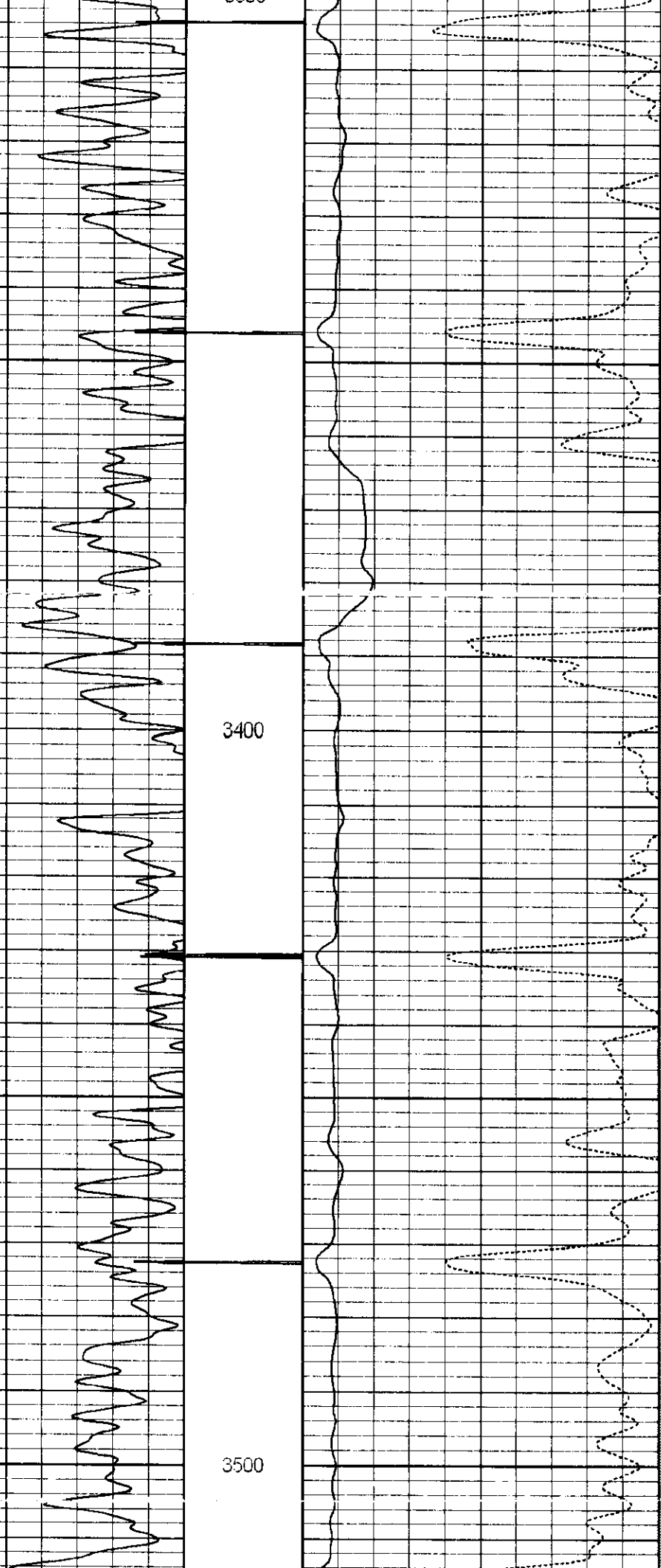
3200

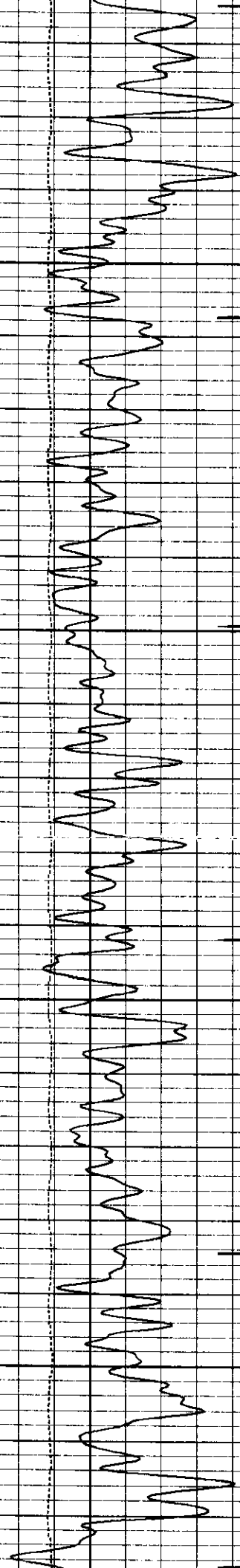
3300



3400

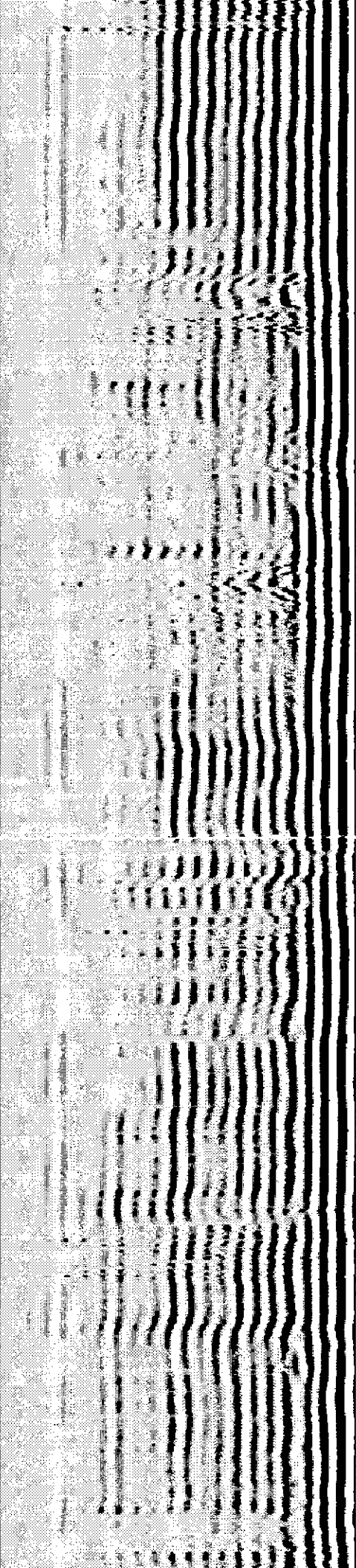
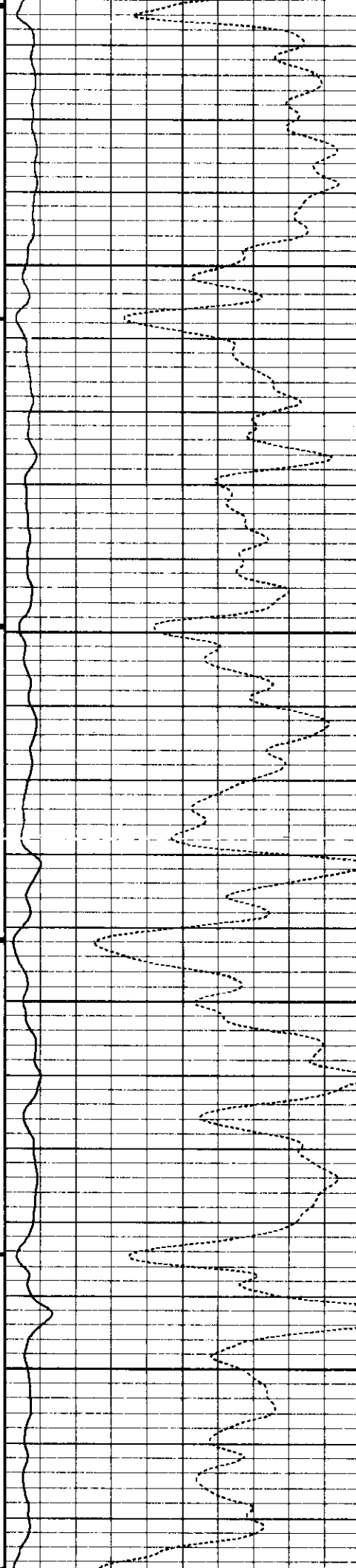
3500

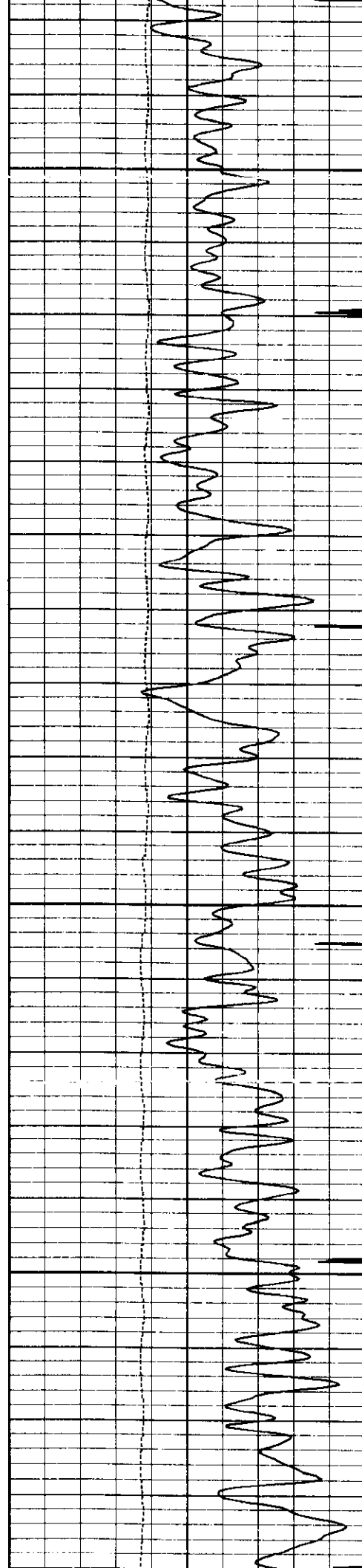




3600

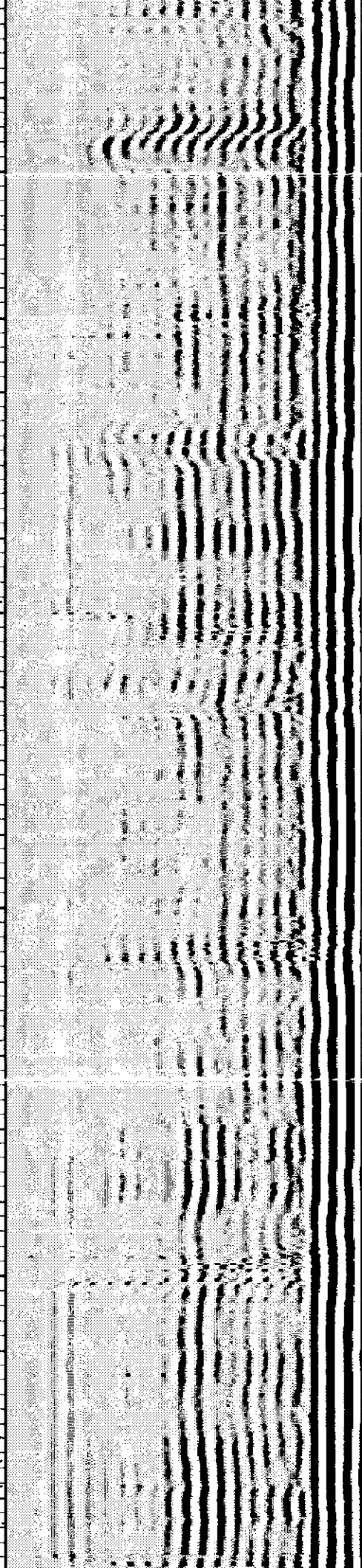
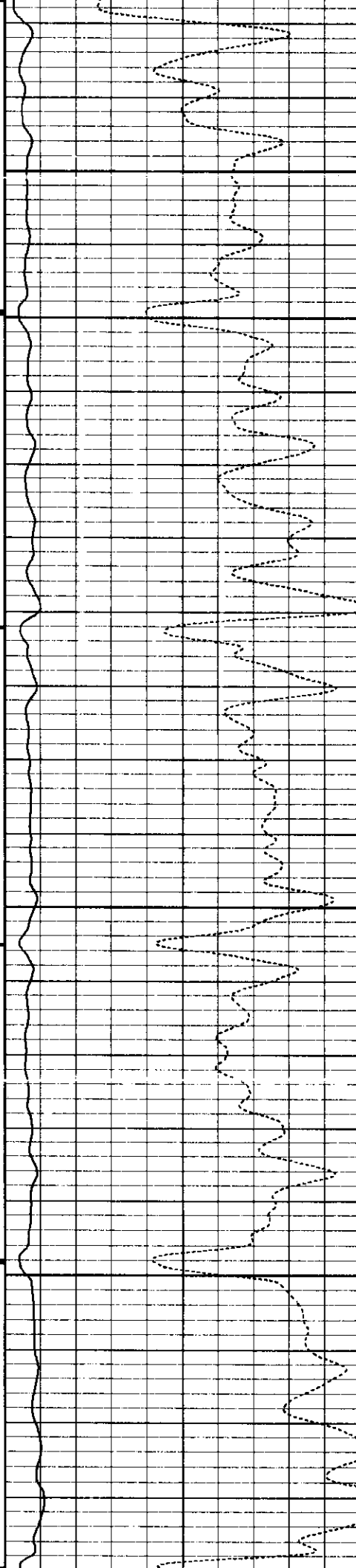
3700

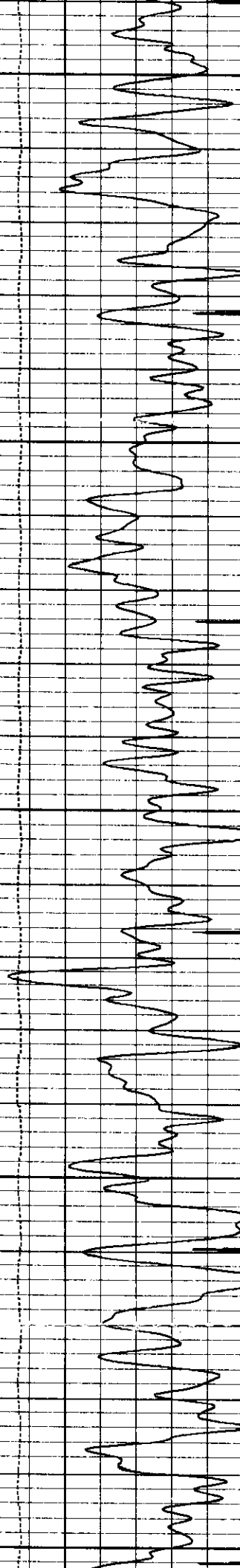




3800

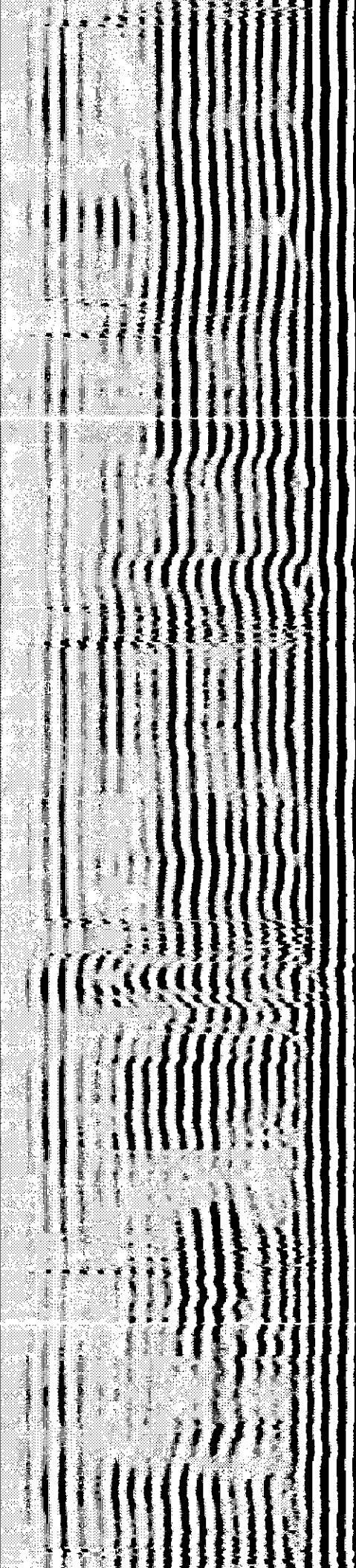
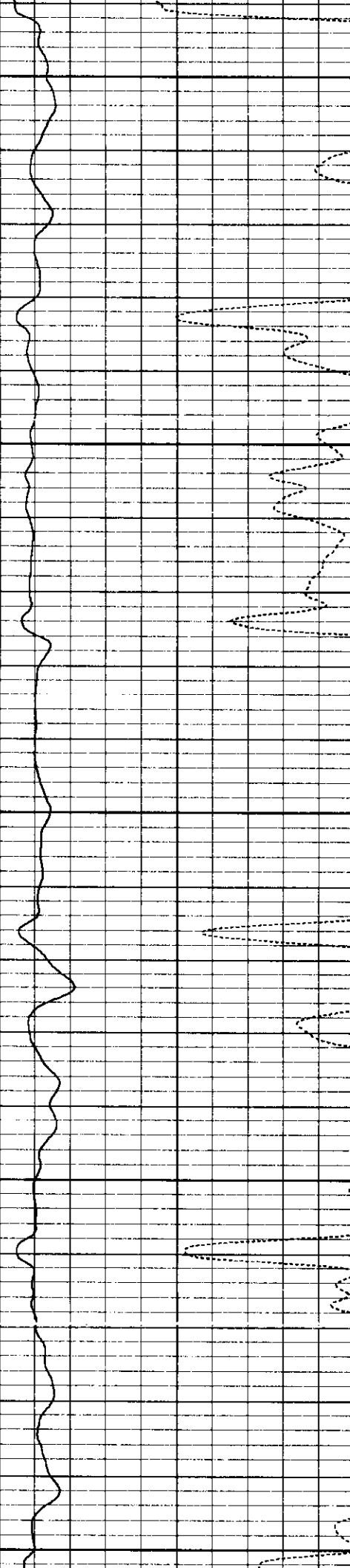
3900

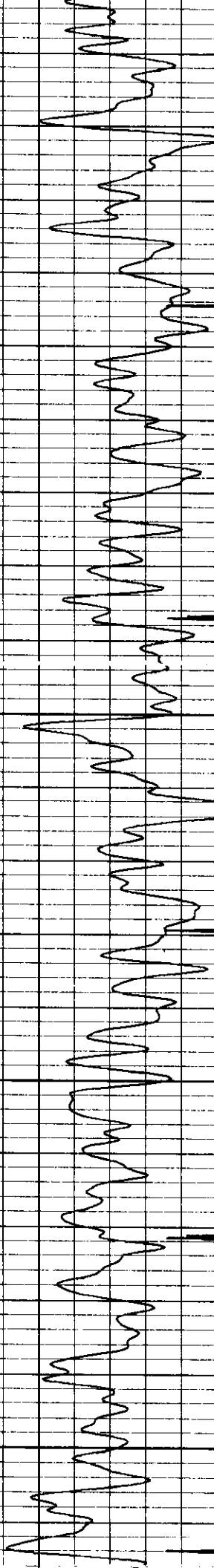




4000

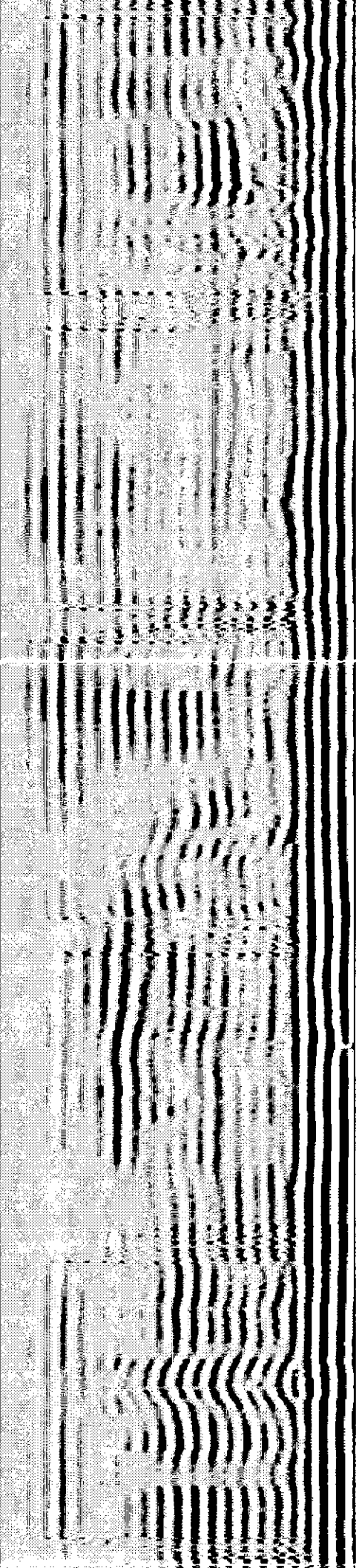
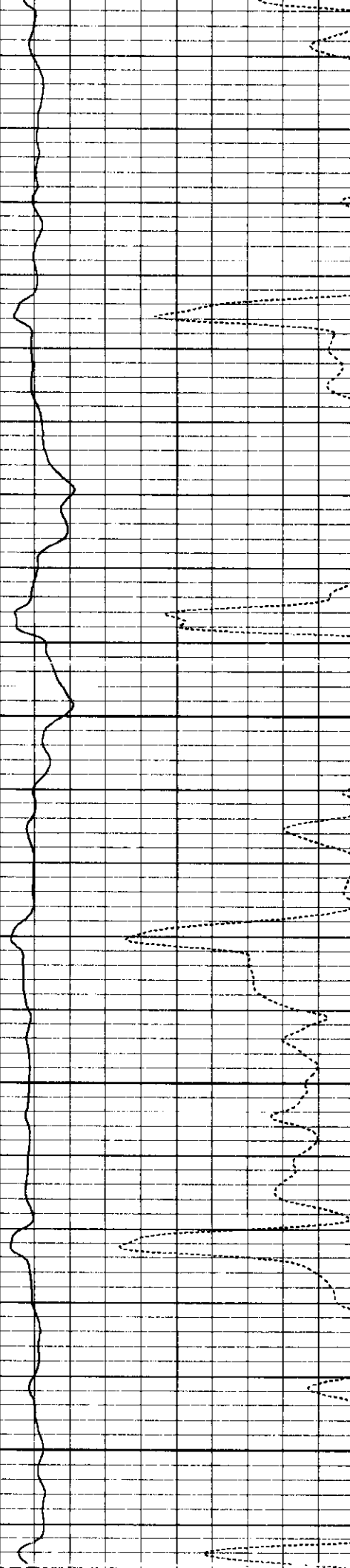
4100

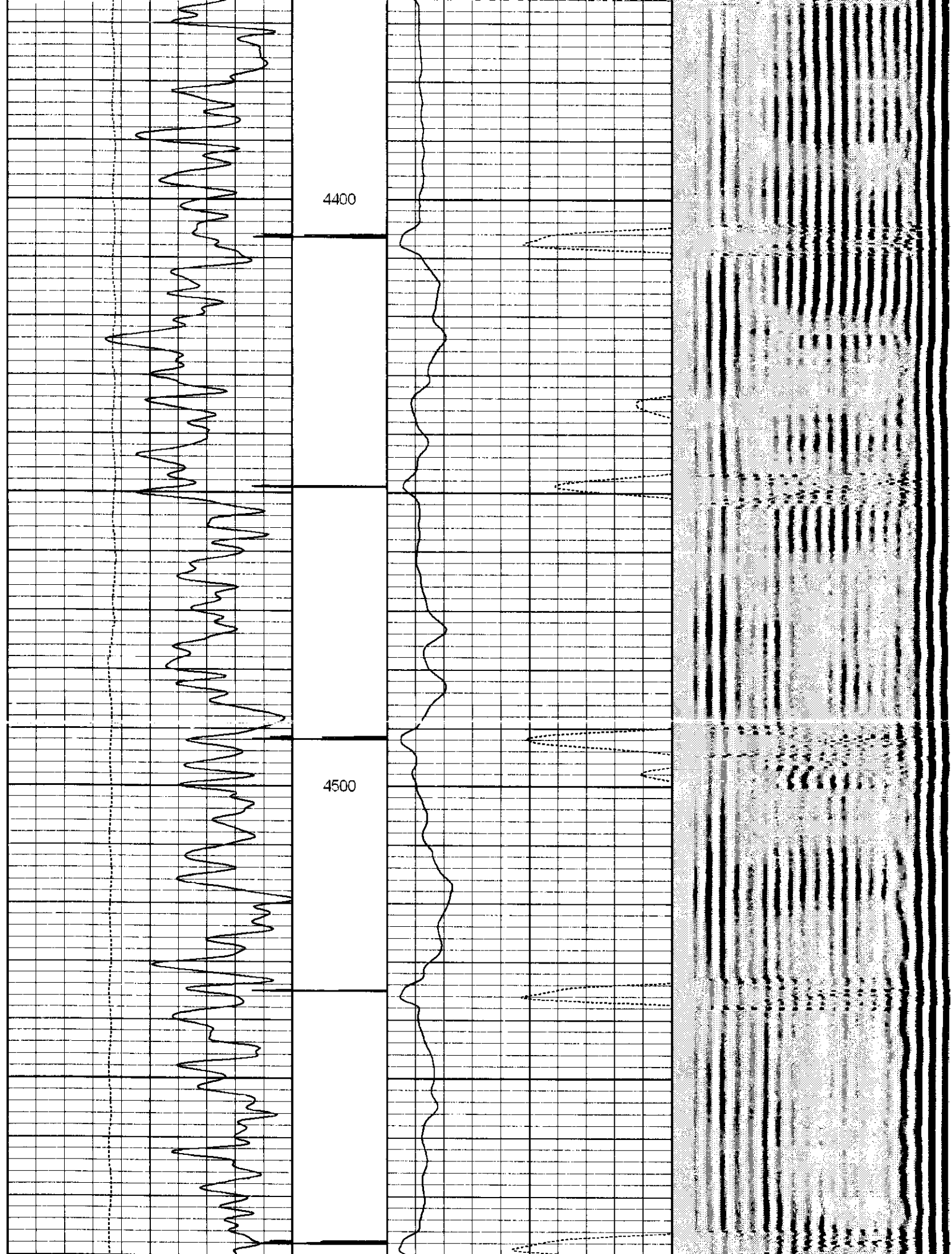




4200

4300

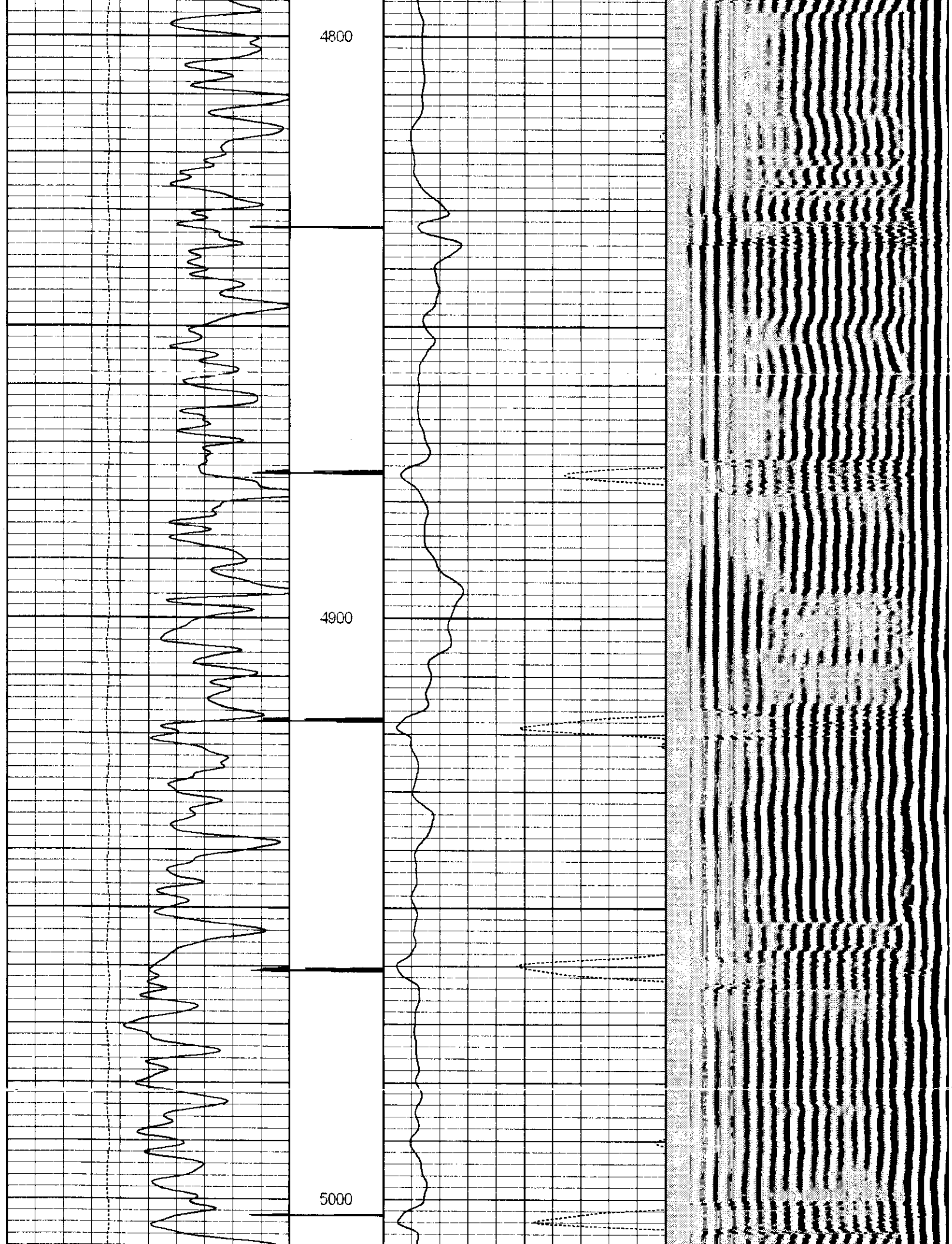


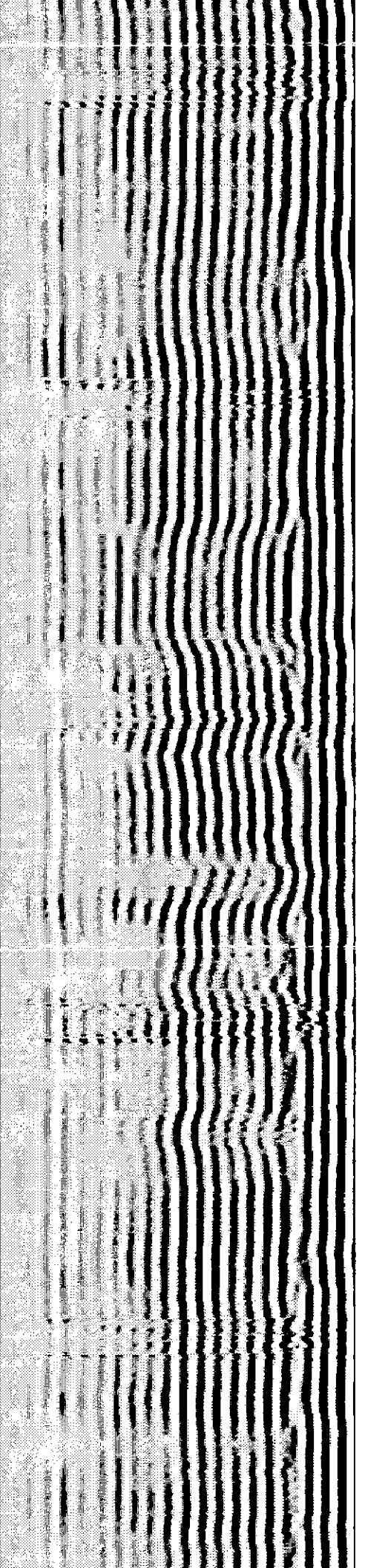
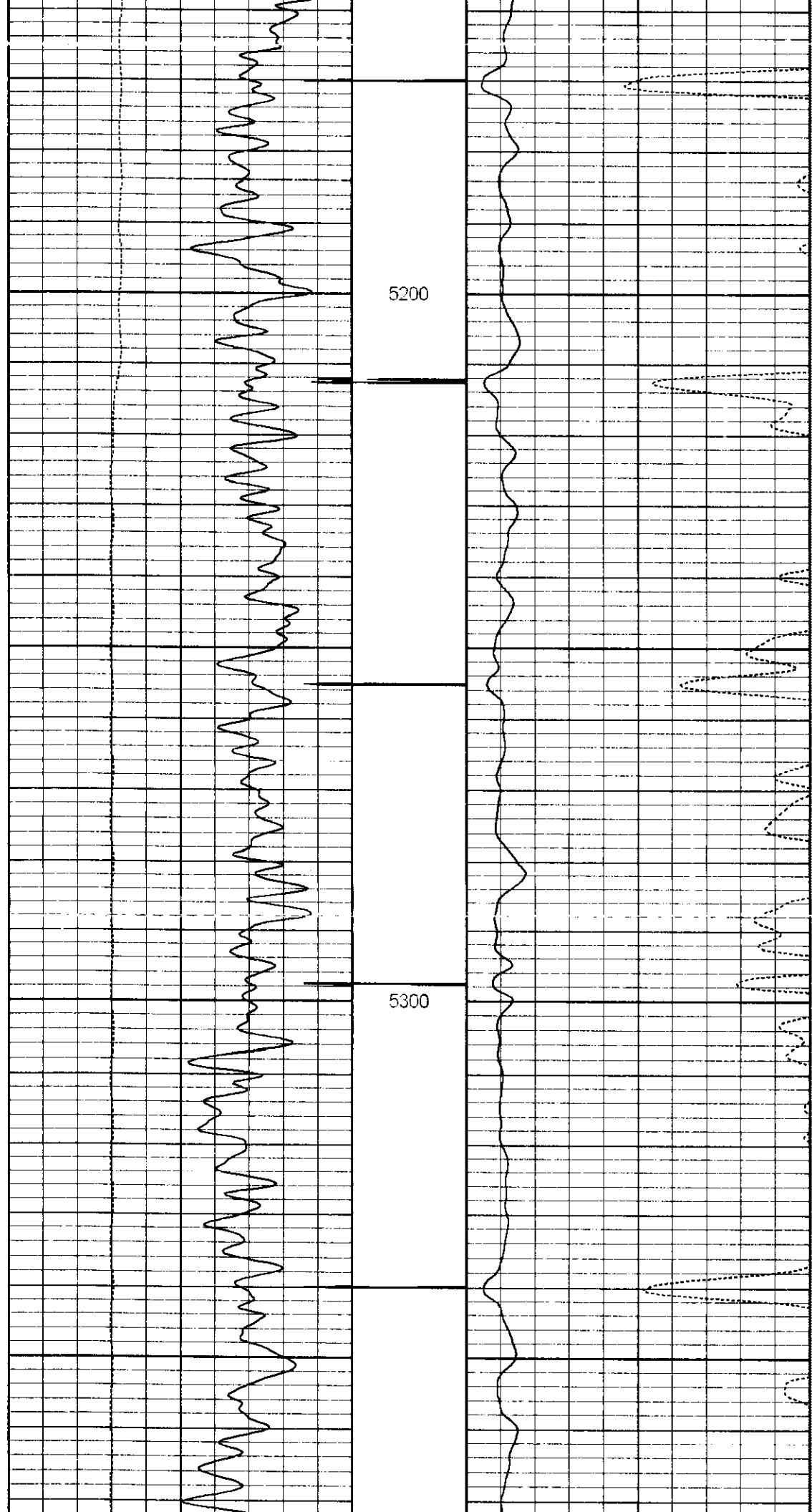


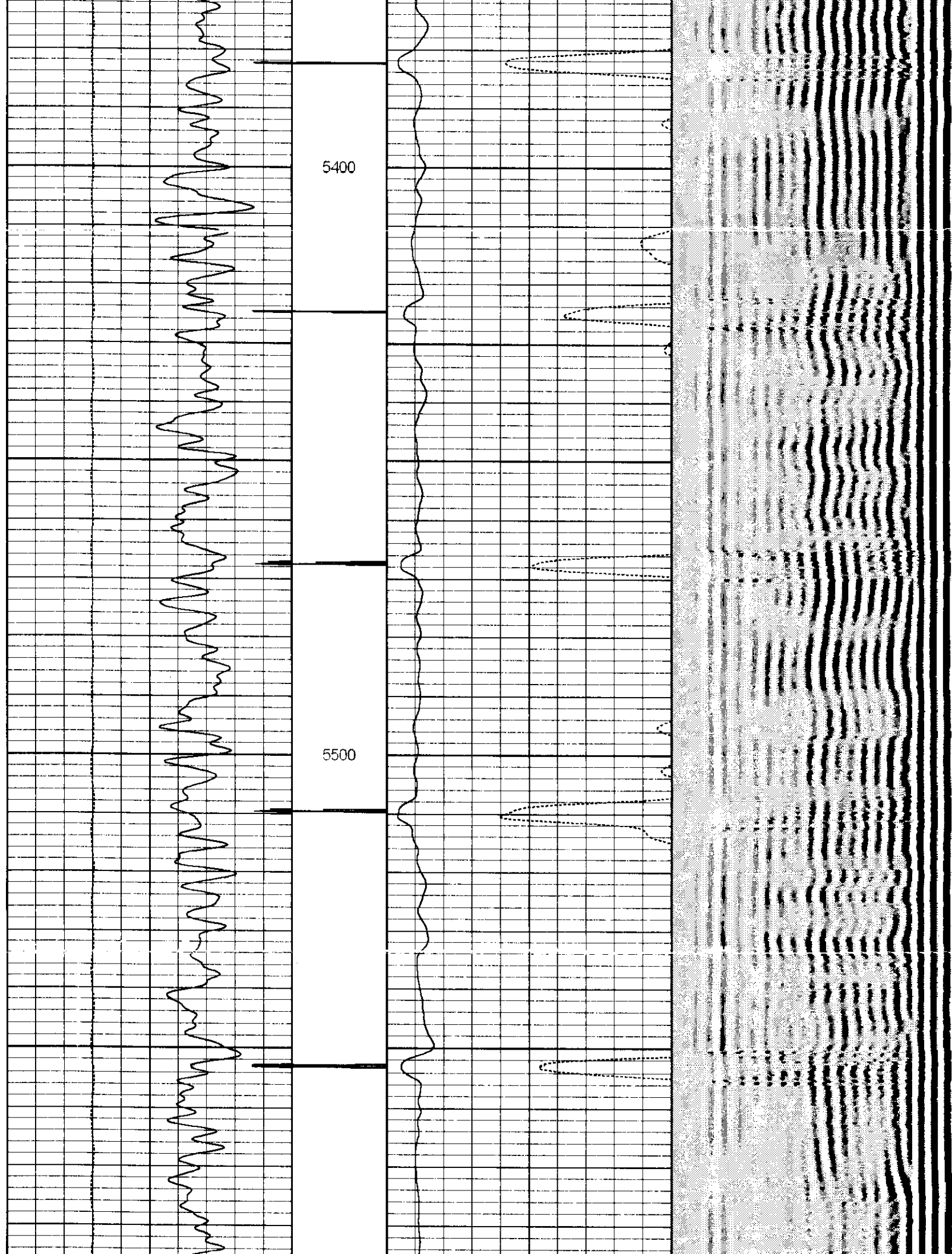
4600

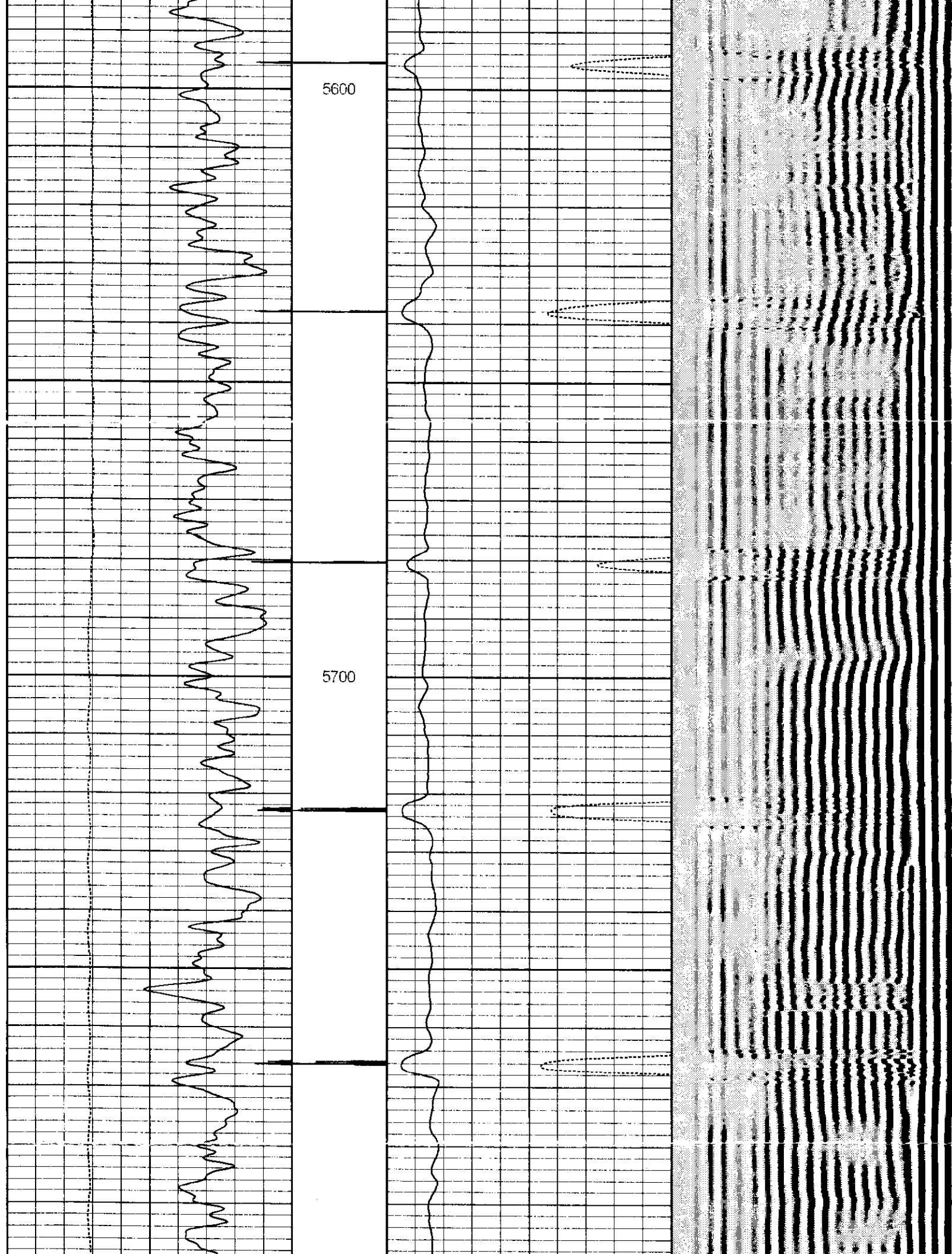
4700











5800

5900

6000

