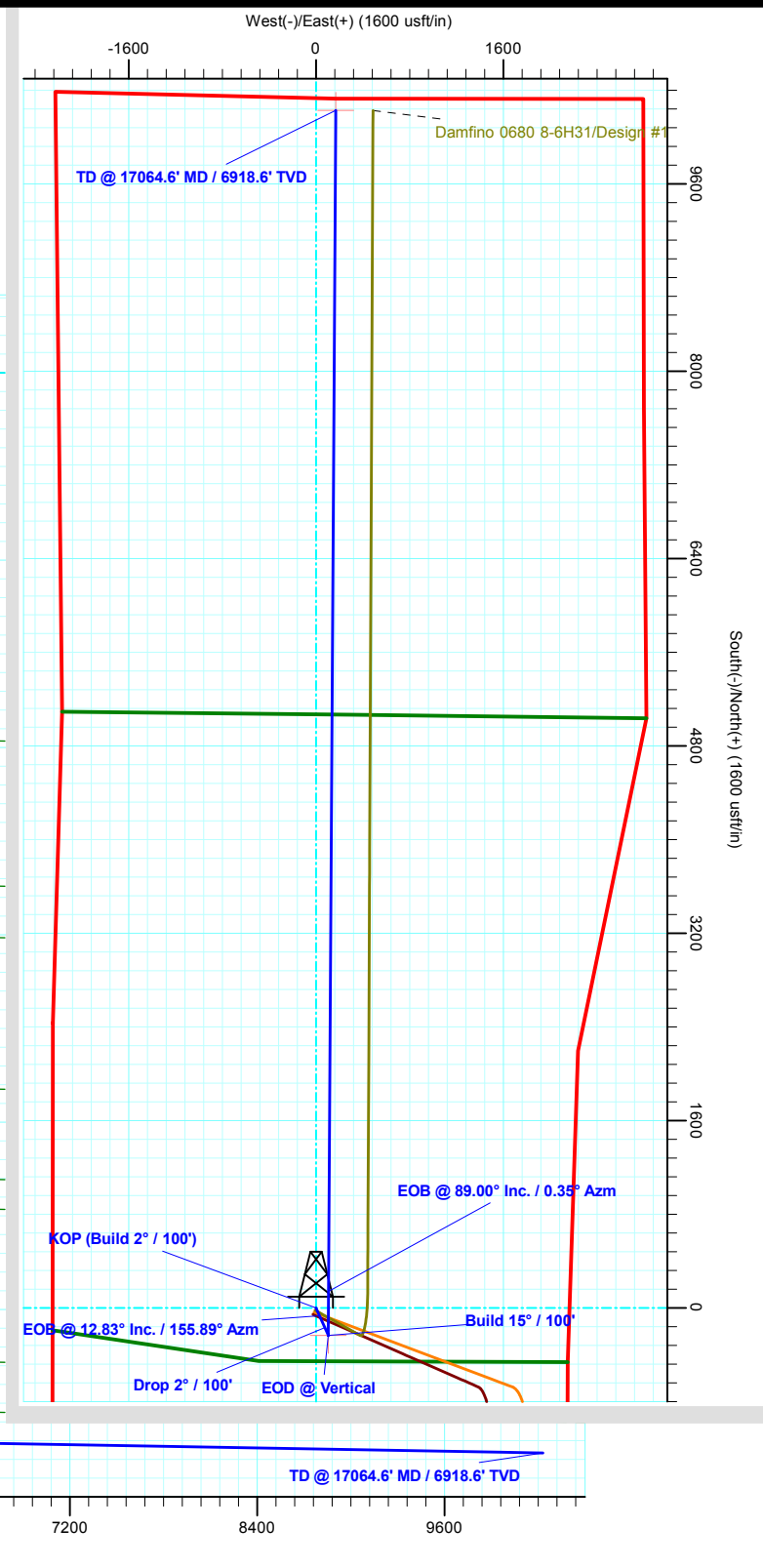
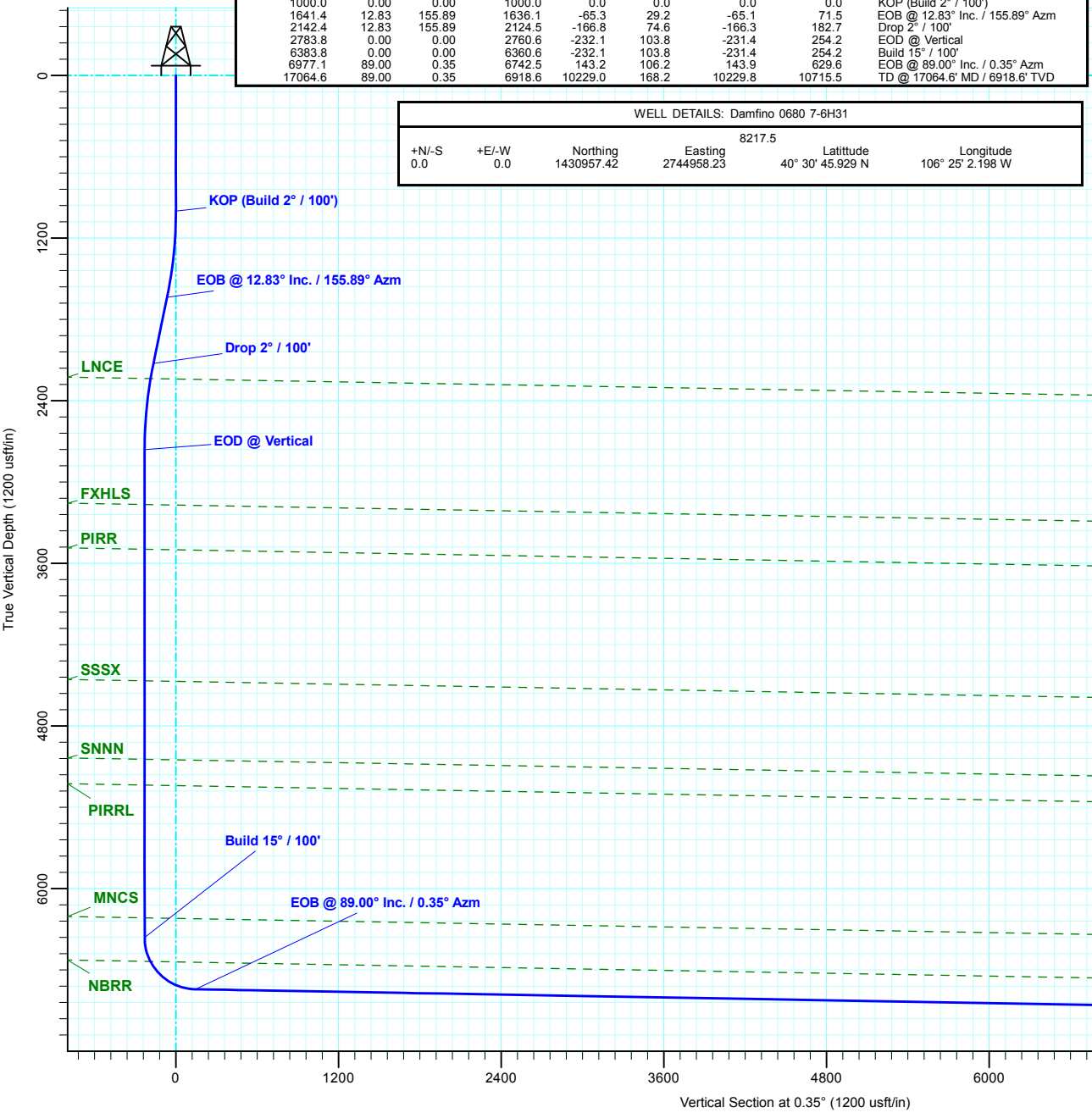




SandRidge Energy  
Jackson County, Colorado  
Sec 6, T6N, R80W, 6th PM  
Damfino 0680 7-6H31  
Design #1  
Cyclone #33

ANNOTATIONS									
MD	Inc	Azi	TVD	+N/-S	+E/-W	Vsect	Departure	Annotation	
1000.0	0.00	0.00	1000.0	0.0	0.0	0.0	0.0	KOP (Build 2° / 100')	
1641.4	12.83	155.89	1636.1	-65.3	29.2	-65.1	71.5	EOB @ 12.83° Inc. / 155.89° Azm	
2142.4	12.83	155.89	2124.5	-166.8	74.6	-166.3	182.7	Drop 2° / 100'	
2783.8	0.00	0.00	2760.6	-232.1	103.8	-231.4	254.2	EOD @ Vertical	
6383.8	0.00	0.00	6360.6	-232.1	103.8	-231.4	254.2	Build 15° / 100'	
6977.1	89.00	0.35	6742.5	143.2	106.2	143.9	629.6	EOB @ 89.00° Inc. / 0.35° Azm	
17064.6	89.00	0.35	6918.6	10229.0	168.2	10229.8	10715.5	TD @ 17064.6' MD / 6918.6' TVD	

WELL DETAILS: Damfino 0680 7-6H31						
				8217.5		
+N/-S	+E/-W	Northing	Easting	Latitude	Longitude	
0.0	0.0	1430957.42	2744958.23	40° 30' 45.929 N	106° 25' 2.198 W	





# **SandRidge Energy**

**Jackson County, Colorado  
Sec 6, T6N, R80W, 6th PM  
Damfino 0680 7-6H31**

**Wellbore #1**

**Plan: Design #1**

## **QES Well Planning Report**

**02 October, 2018**



<b>Database:</b>	EDM 5000.1 Single User Db	<b>Local Co-ordinate Reference:</b>	Well Damfino 0680 7-6H31
<b>Company:</b>	SandRidge Energy	<b>TVD Reference:</b>	well @ 8243.5usft (Cyclone #33)
<b>Project:</b>	Jackson County, Colorado	<b>MD Reference:</b>	well @ 8243.5usft (Cyclone #33)
<b>Site:</b>	Sec 6, T6N, R80W, 6th PM	<b>North Reference:</b>	True
<b>Well:</b>	Damfino 0680 7-6H31	<b>Survey Calculation Method:</b>	Minimum Curvature
<b>Wellbore:</b>	Wellbore #1		
<b>Design:</b>	Design #1		

Project	Jackson County, Colorado		
Map System:	US State Plane 1983	System Datum:	Mean Sea Level
Geo Datum:	North American Datum 1983		
Map Zone:	Colorado Northern Zone		

Site	Sec 6, T6N, R80W, 6th PM				
Site Position:		Northing:	1,430,957.42 usft	Latitude:	40° 30' 45.929 N
From:	Map	Easting:	2,744,958.23 usft	Longitude:	106° 25' 2.198 W
Position Uncertainty:	0.0 usft	Slot Radius:	13-3/16 "	Grid Convergence:	-0.59 °

Well	Damfino 0680 7-6H31					
Well Position	+N/-S	0.0 usft	Northing:	1,430,957.42 usft	Latitude:	40° 30' 45.929 N
	+E/-W	0.0 usft	Easting:	2,744,958.23 usft	Longitude:	106° 25' 2.198 W
Position Uncertainty	0.0 usft		Wellhead Elevation:		Ground Level:	8,217.5 usft

Wellbore	Wellbore #1				
Magnetics	Model Name	Sample Date	Declination (°)	Dip Angle (°)	Field Strength (nT)
	IGRF2015	9/27/2018	8.94	66.65	52,096.33717016

Design	Design #1			
Audit Notes:				
Version:	Phase:	PLAN	Tie On Depth:	0.0
Vertical Section:	Depth From (TVD) (usft)	+N/-S (usft)	+E/-W (usft)	Direction (°)
	0.0	0.0	0.0	0.35

Plan Sections										
Measured Depth (usft)	Inclination (°)	Azimuth (°)	Vertical Depth (usft)	+N/-S (usft)	+E/-W (usft)	Dogleg Rate (°/100usft)	Build Rate (°/100usft)	Turn Rate (°/100usft)	TFO (°)	Target
0.0	0.00	0.00	0.0	0.0	0.0	0.00	0.00	0.00	0.00	
1,000.0	0.00	0.00	1,000.0	0.0	0.0	0.00	0.00	0.00	0.00	
1,641.4	12.83	155.89	1,636.1	-65.3	29.2	2.00	2.00	0.00	155.89	
2,142.4	12.83	155.89	2,124.5	-166.8	74.6	0.00	0.00	0.00	0.00	
2,783.8	0.00	0.00	2,760.6	-232.1	103.8	2.00	-2.00	0.00	180.00	
6,383.8	0.00	0.00	6,360.6	-232.1	103.8	0.00	0.00	0.00	0.00	TOC - Damfino 068
6,977.1	89.00	0.35	6,742.5	143.2	106.2	15.00	15.00	0.06	0.35	
17,064.6	89.00	0.35	6,918.6	10,229.0	168.2	0.00	0.00	0.00	0.00	PBHL - Damfino 06

<b>Database:</b>	EDM 5000.1 Single User Db	<b>Local Co-ordinate Reference:</b>	Well Damfino 0680 7-6H31
<b>Company:</b>	SandRidge Energy	<b>TVD Reference:</b>	well @ 8243.5usft (Cyclone #33)
<b>Project:</b>	Jackson County, Colorado	<b>MD Reference:</b>	well @ 8243.5usft (Cyclone #33)
<b>Site:</b>	Sec 6, T6N, R80W, 6th PM	<b>North Reference:</b>	True
<b>Well:</b>	Damfino 0680 7-6H31	<b>Survey Calculation Method:</b>	Minimum Curvature
<b>Wellbore:</b>	Wellbore #1		
<b>Design:</b>	Design #1		

Planned Survey									
Measured Depth (usft)	Inclination (°)	Azimuth (°)	Vertical Depth (usft)	+N/-S (usft)	+E/-W (usft)	Vertical Section (usft)	Dogleg Rate (°/100usft)	Build Rate (°/100usft)	Turn Rate (°/100usft)
0.0	0.00	0.00	0.0	0.0	0.0	0.0	0.00	0.00	0.00
100.0	0.00	0.00	100.0	0.0	0.0	0.0	0.00	0.00	0.00
200.0	0.00	0.00	200.0	0.0	0.0	0.0	0.00	0.00	0.00
300.0	0.00	0.00	300.0	0.0	0.0	0.0	0.00	0.00	0.00
400.0	0.00	0.00	400.0	0.0	0.0	0.0	0.00	0.00	0.00
500.0	0.00	0.00	500.0	0.0	0.0	0.0	0.00	0.00	0.00
600.0	0.00	0.00	600.0	0.0	0.0	0.0	0.00	0.00	0.00
700.0	0.00	0.00	700.0	0.0	0.0	0.0	0.00	0.00	0.00
800.0	0.00	0.00	800.0	0.0	0.0	0.0	0.00	0.00	0.00
900.0	0.00	0.00	900.0	0.0	0.0	0.0	0.00	0.00	0.00
<b>KOP (Build 2° / 100')</b>									
1,000.0	0.00	0.00	1,000.0	0.0	0.0	0.0	0.00	0.00	0.00
1,100.0	2.00	155.89	1,100.0	-1.6	0.7	-1.6	2.00	2.00	0.00
1,200.0	4.00	155.89	1,199.8	-6.4	2.9	-6.4	2.00	2.00	0.00
1,300.0	6.00	155.89	1,299.5	-14.3	6.4	-14.3	2.00	2.00	0.00
1,400.0	8.00	155.89	1,398.7	-25.4	11.4	-25.4	2.00	2.00	0.00
1,500.0	10.00	155.89	1,497.5	-39.7	17.8	-39.6	2.00	2.00	0.00
1,600.0	12.00	155.89	1,595.6	-57.1	25.6	-57.0	2.00	2.00	0.00
<b>EOB @ 12.83° Inc. / 155.89° Azm</b>									
1,641.4	12.83	155.89	1,636.1	-65.3	29.2	-65.1	2.00	2.00	0.00
1,700.0	12.83	155.89	1,693.2	-77.1	34.5	-76.9	0.00	0.00	0.00
1,800.0	12.83	155.89	1,790.7	-97.4	43.6	-97.1	0.00	0.00	0.00
1,900.0	12.83	155.89	1,888.2	-117.7	52.7	-117.4	0.00	0.00	0.00
2,000.0	12.83	155.89	1,985.7	-137.9	61.7	-137.6	0.00	0.00	0.00
2,100.0	12.83	155.89	2,083.2	-158.2	70.8	-157.8	0.00	0.00	0.00
<b>Drop 2° / 100'</b>									
2,142.4	12.83	155.89	2,124.5	-166.8	74.6	-166.3	0.00	0.00	0.00
2,200.0	11.68	155.89	2,180.8	-178.0	79.6	-177.5	2.00	-2.00	0.00
<b>LNCE</b>									
2,257.0	10.54	155.89	2,236.7	-188.0	84.1	-187.5	2.00	-2.00	0.00
2,300.0	9.68	155.89	2,279.1	-194.9	87.2	-194.3	2.00	-2.00	0.00
2,400.0	7.68	155.89	2,378.0	-208.6	93.4	-208.1	2.00	-2.00	0.00
2,500.0	5.68	155.89	2,477.3	-219.2	98.1	-218.6	2.00	-2.00	0.00
2,600.0	3.68	155.89	2,576.9	-226.7	101.4	-226.1	2.00	-2.00	0.00
2,700.0	1.68	155.89	2,676.8	-230.9	103.3	-230.3	2.00	-2.00	0.00
<b>EOD @ Vertical</b>									
2,783.8	0.00	0.00	2,760.6	-232.1	103.8	-231.4	2.00	-2.00	-186.04
2,800.0	0.00	0.00	2,776.8	-232.1	103.8	-231.4	0.00	0.00	0.00
2,900.0	0.00	0.00	2,876.8	-232.1	103.8	-231.4	0.00	0.00	0.00
3,000.0	0.00	0.00	2,976.8	-232.1	103.8	-231.4	0.00	0.00	0.00
3,100.0	0.00	0.00	3,076.8	-232.1	103.8	-231.4	0.00	0.00	0.00
<b>FXHLS</b>									
3,189.2	0.00	0.00	3,166.0	-232.1	103.8	-231.4	0.00	0.00	0.00
3,200.0	0.00	0.00	3,176.8	-232.1	103.8	-231.4	0.00	0.00	0.00
3,300.0	0.00	0.00	3,276.8	-232.1	103.8	-231.4	0.00	0.00	0.00
3,400.0	0.00	0.00	3,376.8	-232.1	103.8	-231.4	0.00	0.00	0.00
3,500.0	0.00	0.00	3,476.8	-232.1	103.8	-231.4	0.00	0.00	0.00
<b>PIRR</b>									
3,519.2	0.00	0.00	3,496.0	-232.1	103.8	-231.4	0.00	0.00	0.00
3,600.0	0.00	0.00	3,576.8	-232.1	103.8	-231.4	0.00	0.00	0.00
3,700.0	0.00	0.00	3,676.8	-232.1	103.8	-231.4	0.00	0.00	0.00
3,800.0	0.00	0.00	3,776.8	-232.1	103.8	-231.4	0.00	0.00	0.00
3,900.0	0.00	0.00	3,876.8	-232.1	103.8	-231.4	0.00	0.00	0.00

<b>Database:</b>	EDM 5000.1 Single User Db	<b>Local Co-ordinate Reference:</b>	Well Damfino 0680 7-6H31
<b>Company:</b>	SandRidge Energy	<b>TVD Reference:</b>	well @ 8243.5usft (Cyclone #33)
<b>Project:</b>	Jackson County, Colorado	<b>MD Reference:</b>	well @ 8243.5usft (Cyclone #33)
<b>Site:</b>	Sec 6, T6N, R80W, 6th PM	<b>North Reference:</b>	True
<b>Well:</b>	Damfino 0680 7-6H31	<b>Survey Calculation Method:</b>	Minimum Curvature
<b>Wellbore:</b>	Wellbore #1		
<b>Design:</b>	Design #1		

Planned Survey									
Measured Depth (usft)	Inclination (°)	Azimuth (°)	Vertical Depth (usft)	+N/-S (usft)	+E/-W (usft)	Vertical Section (usft)	Dogleg Rate (°/100usft)	Build Rate (°/100usft)	Turn Rate (°/100usft)
4,000.0	0.00	0.00	3,976.8	-232.1	103.8	-231.4	0.00	0.00	0.00
4,100.0	0.00	0.00	4,076.8	-232.1	103.8	-231.4	0.00	0.00	0.00
4,200.0	0.00	0.00	4,176.8	-232.1	103.8	-231.4	0.00	0.00	0.00
4,300.0	0.00	0.00	4,276.8	-232.1	103.8	-231.4	0.00	0.00	0.00
4,400.0	0.00	0.00	4,376.8	-232.1	103.8	-231.4	0.00	0.00	0.00
<b>SSSX</b>									
4,489.2	0.00	0.00	4,466.0	-232.1	103.8	-231.4	0.00	0.00	0.00
4,500.0	0.00	0.00	4,476.8	-232.1	103.8	-231.4	0.00	0.00	0.00
4,600.0	0.00	0.00	4,576.8	-232.1	103.8	-231.4	0.00	0.00	0.00
4,700.0	0.00	0.00	4,676.8	-232.1	103.8	-231.4	0.00	0.00	0.00
4,800.0	0.00	0.00	4,776.8	-232.1	103.8	-231.4	0.00	0.00	0.00
4,900.0	0.00	0.00	4,876.8	-232.1	103.8	-231.4	0.00	0.00	0.00
5,000.0	0.00	0.00	4,976.8	-232.1	103.8	-231.4	0.00	0.00	0.00
<b>SNNN</b>									
5,069.2	0.00	0.00	5,046.0	-232.1	103.8	-231.4	0.00	0.00	0.00
5,100.0	0.00	0.00	5,076.8	-232.1	103.8	-231.4	0.00	0.00	0.00
5,200.0	0.00	0.00	5,176.8	-232.1	103.8	-231.4	0.00	0.00	0.00
<b>PIRRL</b>									
5,259.2	0.00	0.00	5,236.0	-232.1	103.8	-231.4	0.00	0.00	0.00
5,300.0	0.00	0.00	5,276.8	-232.1	103.8	-231.4	0.00	0.00	0.00
5,400.0	0.00	0.00	5,376.8	-232.1	103.8	-231.4	0.00	0.00	0.00
5,500.0	0.00	0.00	5,476.8	-232.1	103.8	-231.4	0.00	0.00	0.00
5,600.0	0.00	0.00	5,576.8	-232.1	103.8	-231.4	0.00	0.00	0.00
5,700.0	0.00	0.00	5,676.8	-232.1	103.8	-231.4	0.00	0.00	0.00
5,800.0	0.00	0.00	5,776.8	-232.1	103.8	-231.4	0.00	0.00	0.00
5,900.0	0.00	0.00	5,876.8	-232.1	103.8	-231.4	0.00	0.00	0.00
6,000.0	0.00	0.00	5,976.8	-232.1	103.8	-231.4	0.00	0.00	0.00
6,100.0	0.00	0.00	6,076.8	-232.1	103.8	-231.4	0.00	0.00	0.00
6,200.0	0.00	0.00	6,176.8	-232.1	103.8	-231.4	0.00	0.00	0.00
<b>MNCS</b>									
6,239.2	0.00	0.00	6,216.0	-232.1	103.8	-231.4	0.00	0.00	0.00
6,300.0	0.00	0.00	6,276.8	-232.1	103.8	-231.4	0.00	0.00	0.00
<b>Build 15° / 100'</b>									
6,383.8	0.00	0.00	6,360.6	-232.1	103.8	-231.4	0.00	0.00	0.00
6,400.0	2.43	0.35	6,376.8	-231.7	103.9	-231.1	15.00	15.00	0.00
6,425.0	6.18	0.35	6,401.7	-229.8	103.9	-229.2	15.00	15.00	0.00
6,450.0	9.93	0.35	6,426.5	-226.3	103.9	-225.7	15.00	15.00	0.00
6,475.0	13.68	0.35	6,450.9	-221.2	103.9	-220.6	15.00	15.00	0.00
6,500.0	17.43	0.35	6,475.0	-214.5	104.0	-213.9	15.00	15.00	0.00
6,525.0	21.18	0.35	6,498.6	-206.3	104.0	-205.6	15.00	15.00	0.00
6,550.0	24.93	0.35	6,521.6	-196.5	104.1	-195.8	15.00	15.00	0.00
<b>NBRR</b>									
6,566.8	27.46	0.35	6,536.7	-189.0	104.1	-188.4	15.00	15.00	0.00
6,575.0	28.68	0.35	6,543.9	-185.2	104.1	-184.6	15.00	15.00	0.00
6,600.0	32.43	0.35	6,565.4	-172.5	104.2	-171.9	15.00	15.00	0.00
6,625.0	36.18	0.35	6,586.1	-158.4	104.3	-157.8	15.00	15.00	0.00
6,650.0	39.93	0.35	6,605.8	-143.0	104.4	-142.4	15.00	15.00	0.00
6,675.0	43.68	0.35	6,624.4	-126.3	104.5	-125.7	15.00	15.00	0.00
6,700.0	47.43	0.35	6,641.9	-108.5	104.6	-107.9	15.00	15.00	0.00
6,725.0	51.18	0.35	6,658.2	-89.5	104.7	-88.9	15.00	15.00	0.00
6,750.0	54.93	0.35	6,673.2	-69.6	104.8	-68.9	15.00	15.00	0.00
6,775.0	58.68	0.35	6,686.9	-48.7	105.0	-48.0	15.00	15.00	0.00
6,800.0	62.43	0.35	6,699.2	-26.9	105.1	-26.2	15.00	15.00	0.00

<b>Database:</b>	EDM 5000.1 Single User Db	<b>Local Co-ordinate Reference:</b>	Well Damfino 0680 7-6H31
<b>Company:</b>	SandRidge Energy	<b>TVD Reference:</b>	well @ 8243.5usft (Cyclone #33)
<b>Project:</b>	Jackson County, Colorado	<b>MD Reference:</b>	well @ 8243.5usft (Cyclone #33)
<b>Site:</b>	Sec 6, T6N, R80W, 6th PM	<b>North Reference:</b>	True
<b>Well:</b>	Damfino 0680 7-6H31	<b>Survey Calculation Method:</b>	Minimum Curvature
<b>Wellbore:</b>	Wellbore #1		
<b>Design:</b>	Design #1		

Planned Survey									
Measured Depth (usft)	Inclination (°)	Azimuth (°)	Vertical Depth (usft)	+N/-S (usft)	+E/-W (usft)	Vertical Section (usft)	Dogleg Rate (°/100usft)	Build Rate (°/100usft)	Turn Rate (°/100usft)
6,825.0	66.18	0.35	6,710.0	-4.4	105.2	-3.7	15.00	15.00	0.00
6,850.0	69.93	0.35	6,719.4	18.8	105.4	19.5	15.00	15.00	0.00
6,875.0	73.68	0.35	6,727.2	42.6	105.5	43.2	15.00	15.00	0.00
6,900.0	77.43	0.35	6,733.4	66.8	105.7	67.4	15.00	15.00	0.00
6,925.0	81.18	0.35	6,738.1	91.3	105.8	92.0	15.00	15.00	0.00
6,950.0	84.93	0.35	6,741.1	116.1	106.0	116.8	15.00	15.00	0.00
<b>EOB @ 89.00° Inc. / 0.35° Azm</b>									
6,977.1	89.00	0.35	6,742.5	143.2	106.2	143.9	15.00	15.00	0.00
7,000.0	89.00	0.35	6,742.9	166.1	106.3	166.7	0.00	0.00	0.00
7,100.0	89.00	0.35	6,744.7	266.1	106.9	266.7	0.00	0.00	0.00
7,200.0	89.00	0.35	6,746.4	366.1	107.5	366.7	0.00	0.00	0.00
7,300.0	89.00	0.35	6,748.1	466.0	108.1	466.7	0.00	0.00	0.00
7,400.0	89.00	0.35	6,749.9	566.0	108.8	566.7	0.00	0.00	0.00
7,500.0	89.00	0.35	6,751.6	666.0	109.4	666.7	0.00	0.00	0.00
7,600.0	89.00	0.35	6,753.4	766.0	110.0	766.7	0.00	0.00	0.00
7,700.0	89.00	0.35	6,755.1	866.0	110.6	866.6	0.00	0.00	0.00
7,800.0	89.00	0.35	6,756.9	966.0	111.2	966.6	0.00	0.00	0.00
7,900.0	89.00	0.35	6,758.6	1,065.9	111.8	1,066.6	0.00	0.00	0.00
8,000.0	89.00	0.35	6,760.4	1,165.9	112.4	1,166.6	0.00	0.00	0.00
8,100.0	89.00	0.35	6,762.1	1,265.9	113.1	1,266.6	0.00	0.00	0.00
8,200.0	89.00	0.35	6,763.9	1,365.9	113.7	1,366.6	0.00	0.00	0.00
8,300.0	89.00	0.35	6,765.6	1,465.9	114.3	1,466.5	0.00	0.00	0.00
8,400.0	89.00	0.35	6,767.3	1,565.9	114.9	1,566.5	0.00	0.00	0.00
8,500.0	89.00	0.35	6,769.1	1,665.8	115.5	1,666.5	0.00	0.00	0.00
8,600.0	89.00	0.35	6,770.8	1,765.8	116.1	1,766.5	0.00	0.00	0.00
8,700.0	89.00	0.35	6,772.6	1,865.8	116.8	1,866.5	0.00	0.00	0.00
8,800.0	89.00	0.35	6,774.3	1,965.8	117.4	1,966.5	0.00	0.00	0.00
8,900.0	89.00	0.35	6,776.1	2,065.8	118.0	2,066.5	0.00	0.00	0.00
9,000.0	89.00	0.35	6,777.8	2,165.8	118.6	2,166.4	0.00	0.00	0.00
9,100.0	89.00	0.35	6,779.6	2,265.7	119.2	2,266.4	0.00	0.00	0.00
9,200.0	89.00	0.35	6,781.3	2,365.7	119.8	2,366.4	0.00	0.00	0.00
9,300.0	89.00	0.35	6,783.1	2,465.7	120.4	2,466.4	0.00	0.00	0.00
9,400.0	89.00	0.35	6,784.8	2,565.7	121.1	2,566.4	0.00	0.00	0.00
9,500.0	89.00	0.35	6,786.5	2,665.7	121.7	2,666.4	0.00	0.00	0.00
9,600.0	89.00	0.35	6,788.3	2,765.7	122.3	2,766.3	0.00	0.00	0.00
9,700.0	89.00	0.35	6,790.0	2,865.6	122.9	2,866.3	0.00	0.00	0.00
9,800.0	89.00	0.35	6,791.8	2,965.6	123.5	2,966.3	0.00	0.00	0.00
9,900.0	89.00	0.35	6,793.5	3,065.6	124.1	3,066.3	0.00	0.00	0.00
10,000.0	89.00	0.35	6,795.3	3,165.6	124.8	3,166.3	0.00	0.00	0.00
10,100.0	89.00	0.35	6,797.0	3,265.6	125.4	3,266.3	0.00	0.00	0.00
10,200.0	89.00	0.35	6,798.8	3,365.5	126.0	3,366.3	0.00	0.00	0.00
10,300.0	89.00	0.35	6,800.5	3,465.5	126.6	3,466.2	0.00	0.00	0.00
10,400.0	89.00	0.35	6,802.2	3,565.5	127.2	3,566.2	0.00	0.00	0.00
10,500.0	89.00	0.35	6,804.0	3,665.5	127.8	3,666.2	0.00	0.00	0.00
10,600.0	89.00	0.35	6,805.7	3,765.5	128.4	3,766.2	0.00	0.00	0.00
10,700.0	89.00	0.35	6,807.5	3,865.5	129.1	3,866.2	0.00	0.00	0.00
10,800.0	89.00	0.35	6,809.2	3,965.4	129.7	3,966.2	0.00	0.00	0.00
10,900.0	89.00	0.35	6,811.0	4,065.4	130.3	4,066.1	0.00	0.00	0.00
11,000.0	89.00	0.35	6,812.7	4,165.4	130.9	4,166.1	0.00	0.00	0.00
11,100.0	89.00	0.35	6,814.5	4,265.4	131.5	4,266.1	0.00	0.00	0.00
11,200.0	89.00	0.35	6,816.2	4,365.4	132.1	4,366.1	0.00	0.00	0.00
11,300.0	89.00	0.35	6,818.0	4,465.4	132.7	4,466.1	0.00	0.00	0.00
11,400.0	89.00	0.35	6,819.7	4,565.3	133.4	4,566.1	0.00	0.00	0.00

<b>Database:</b>	EDM 5000.1 Single User Db	<b>Local Co-ordinate Reference:</b>	Well Damfino 0680 7-6H31
<b>Company:</b>	SandRidge Energy	<b>TVD Reference:</b>	well @ 8243.5usft (Cyclone #33)
<b>Project:</b>	Jackson County, Colorado	<b>MD Reference:</b>	well @ 8243.5usft (Cyclone #33)
<b>Site:</b>	Sec 6, T6N, R80W, 6th PM	<b>North Reference:</b>	True
<b>Well:</b>	Damfino 0680 7-6H31	<b>Survey Calculation Method:</b>	Minimum Curvature
<b>Wellbore:</b>	Wellbore #1		
<b>Design:</b>	Design #1		

Planned Survey									
Measured Depth (usft)	Inclination (°)	Azimuth (°)	Vertical Depth (usft)	+N/-S (usft)	+E/-W (usft)	Vertical Section (usft)	Dogleg Rate (°/100usft)	Build Rate (°/100usft)	Turn Rate (°/100usft)
11,500.0	89.00	0.35	6,821.4	4,665.3	134.0	4,666.1	0.00	0.00	0.00
11,600.0	89.00	0.35	6,823.2	4,765.3	134.6	4,766.0	0.00	0.00	0.00
11,700.0	89.00	0.35	6,824.9	4,865.3	135.2	4,866.0	0.00	0.00	0.00
11,800.0	89.00	0.35	6,826.7	4,965.3	135.8	4,966.0	0.00	0.00	0.00
11,900.0	89.00	0.35	6,828.4	5,065.3	136.4	5,066.0	0.00	0.00	0.00
12,000.0	89.00	0.35	6,830.2	5,165.2	137.1	5,166.0	0.00	0.00	0.00
12,100.0	89.00	0.35	6,831.9	5,265.2	137.7	5,266.0	0.00	0.00	0.00
12,200.0	89.00	0.35	6,833.7	5,365.2	138.3	5,366.0	0.00	0.00	0.00
12,300.0	89.00	0.35	6,835.4	5,465.2	138.9	5,465.9	0.00	0.00	0.00
12,400.0	89.00	0.35	6,837.2	5,565.2	139.5	5,565.9	0.00	0.00	0.00
12,500.0	89.00	0.35	6,838.9	5,665.2	140.1	5,665.9	0.00	0.00	0.00
12,600.0	89.00	0.35	6,840.6	5,765.1	140.7	5,765.9	0.00	0.00	0.00
12,700.0	89.00	0.35	6,842.4	5,865.1	141.4	5,865.9	0.00	0.00	0.00
12,800.0	89.00	0.35	6,844.1	5,965.1	142.0	5,965.9	0.00	0.00	0.00
12,900.0	89.00	0.35	6,845.9	6,065.1	142.6	6,065.8	0.00	0.00	0.00
13,000.0	89.00	0.35	6,847.6	6,165.1	143.2	6,165.8	0.00	0.00	0.00
13,100.0	89.00	0.35	6,849.4	6,265.1	143.8	6,265.8	0.00	0.00	0.00
13,200.0	89.00	0.35	6,851.1	6,365.0	144.4	6,365.8	0.00	0.00	0.00
13,300.0	89.00	0.35	6,852.9	6,465.0	145.1	6,465.8	0.00	0.00	0.00
13,400.0	89.00	0.35	6,854.6	6,565.0	145.7	6,565.8	0.00	0.00	0.00
13,500.0	89.00	0.35	6,856.4	6,665.0	146.3	6,665.8	0.00	0.00	0.00
13,600.0	89.00	0.35	6,858.1	6,765.0	146.9	6,765.7	0.00	0.00	0.00
13,700.0	89.00	0.35	6,859.8	6,864.9	147.5	6,865.7	0.00	0.00	0.00
13,800.0	89.00	0.35	6,861.6	6,964.9	148.1	6,965.7	0.00	0.00	0.00
13,900.0	89.00	0.35	6,863.3	7,064.9	148.7	7,065.7	0.00	0.00	0.00
14,000.0	89.00	0.35	6,865.1	7,164.9	149.4	7,165.7	0.00	0.00	0.00
14,100.0	89.00	0.35	6,866.8	7,264.9	150.0	7,265.7	0.00	0.00	0.00
14,200.0	89.00	0.35	6,868.6	7,364.9	150.6	7,365.6	0.00	0.00	0.00
14,300.0	89.00	0.35	6,870.3	7,464.8	151.2	7,465.6	0.00	0.00	0.00
14,400.0	89.00	0.35	6,872.1	7,564.8	151.8	7,565.6	0.00	0.00	0.00
14,500.0	89.00	0.35	6,873.8	7,664.8	152.4	7,665.6	0.00	0.00	0.00
14,600.0	89.00	0.35	6,875.5	7,764.8	153.0	7,765.6	0.00	0.00	0.00
14,700.0	89.00	0.35	6,877.3	7,864.8	153.7	7,865.6	0.00	0.00	0.00
14,800.0	89.00	0.35	6,879.0	7,964.8	154.3	7,965.6	0.00	0.00	0.00
14,900.0	89.00	0.35	6,880.8	8,064.7	154.9	8,065.5	0.00	0.00	0.00
15,000.0	89.00	0.35	6,882.5	8,164.7	155.5	8,165.5	0.00	0.00	0.00
15,100.0	89.00	0.35	6,884.3	8,264.7	156.1	8,265.5	0.00	0.00	0.00
15,200.0	89.00	0.35	6,886.0	8,364.7	156.7	8,365.5	0.00	0.00	0.00
15,300.0	89.00	0.35	6,887.8	8,464.7	157.4	8,465.5	0.00	0.00	0.00
15,400.0	89.00	0.35	6,889.5	8,564.7	158.0	8,565.5	0.00	0.00	0.00
15,500.0	89.00	0.35	6,891.3	8,664.6	158.6	8,665.4	0.00	0.00	0.00
15,600.0	89.00	0.35	6,893.0	8,764.6	159.2	8,765.4	0.00	0.00	0.00
15,700.0	89.00	0.35	6,894.7	8,864.6	159.8	8,865.4	0.00	0.00	0.00
15,800.0	89.00	0.35	6,896.5	8,964.6	160.4	8,965.4	0.00	0.00	0.00
15,900.0	89.00	0.35	6,898.2	9,064.6	161.0	9,065.4	0.00	0.00	0.00
16,000.0	89.00	0.35	6,900.0	9,164.6	161.7	9,165.4	0.00	0.00	0.00
16,100.0	89.00	0.35	6,901.7	9,264.5	162.3	9,265.4	0.00	0.00	0.00
16,200.0	89.00	0.35	6,903.5	9,364.5	162.9	9,365.3	0.00	0.00	0.00
16,300.0	89.00	0.35	6,905.2	9,464.5	163.5	9,465.3	0.00	0.00	0.00
16,400.0	89.00	0.35	6,907.0	9,564.5	164.1	9,565.3	0.00	0.00	0.00
16,500.0	89.00	0.35	6,908.7	9,664.5	164.7	9,665.3	0.00	0.00	0.00
16,600.0	89.00	0.35	6,910.5	9,764.5	165.4	9,765.3	0.00	0.00	0.00
16,700.0	89.00	0.35	6,912.2	9,864.4	166.0	9,865.3	0.00	0.00	0.00
16,800.0	89.00	0.35	6,913.9	9,964.4	166.6	9,965.3	0.00	0.00	0.00



<b>Database:</b>	EDM 5000.1 Single User Db	<b>Local Co-ordinate Reference:</b>	Well Damfino 0680 7-6H31
<b>Company:</b>	SandRidge Energy	<b>TVD Reference:</b>	well @ 8243.5usft (Cyclone #33)
<b>Project:</b>	Jackson County, Colorado	<b>MD Reference:</b>	well @ 8243.5usft (Cyclone #33)
<b>Site:</b>	Sec 6, T6N, R80W, 6th PM	<b>North Reference:</b>	True
<b>Well:</b>	Damfino 0680 7-6H31	<b>Survey Calculation Method:</b>	Minimum Curvature
<b>Wellbore:</b>	Wellbore #1		
<b>Design:</b>	Design #1		

Planned Survey									
Measured Depth (usft)	Inclination (°)	Azimuth (°)	Vertical Depth (usft)	+N/-S (usft)	+E/-W (usft)	Vertical Section (usft)	Dogleg Rate (°/100usft)	Build Rate (°/100usft)	Turn Rate (°/100usft)
16,900.0	89.00	0.35	6,915.7	10,064.4	167.2	10,065.2	0.00	0.00	0.00
17,000.0	89.00	0.35	6,917.4	10,164.4	167.8	10,165.2	0.00	0.00	0.00
<b>TD @ 17064.6' MD / 6918.6' TVD</b>									
17,064.6	89.00	0.35	6,918.6	10,229.0	168.2	10,229.8	0.00	0.00	0.00

Design Targets									
Target Name	Dip Angle (°)	Dip Dir. (°)	TVD (usft)	+N/-S (usft)	+E/-W (usft)	Northing (usft)	Easting (usft)	Latitude	Longitude
TOC - Damfino 0680 - hit/miss target - Shape - Point	0.00	0.00	6,360.6	-232.1	103.8	1,430,724.29	2,745,059.67	40° 30' 43.635 N	106° 25' 0.854 W
PBHL - Damfino 0680 - plan hits target center - Point	0.00	0.00	6,918.6	10,229.0	168.2	1,441,184.13	2,745,232.24	40° 32' 27.009 N	106° 25' 0.020 W

Formations						
Measured Depth (usft)	Vertical Depth (usft)	Name	Lithology	Dip (°)	Dip Direction (°)	
2,257.0	2,236.7	LNCE		1.00	0.35	
3,189.2	3,166.0	FXHLS		1.00	0.35	
3,519.2	3,496.0	PIRR		1.00	0.35	
4,489.2	4,466.0	SSSX		1.00	0.35	
5,069.2	5,046.0	SNNN		1.00	0.35	
5,259.2	5,236.0	PIRRL		1.00	0.35	
6,239.2	6,216.0	MNCS		1.00	0.35	
6,566.8	6,536.7	NBRR		1.00	0.35	

Plan Annotations				
Measured Depth (usft)	Vertical Depth (usft)	Local Coordinates		Comment
		+N/-S (usft)	+E/-W (usft)	
1,000.0	1,000.0	0.0	0.0	KOP (Build 2° / 100')
1,641.4	1,636.1	-65.3	29.2	EOB @ 12.83° Inc. / 155.89° Azm
2,142.4	2,124.5	-166.8	74.6	Drop 2° / 100'
2,783.8	2,760.6	-232.1	103.8	EOD @ Vertical
6,383.8	6,360.6	-232.1	103.8	Build 15° / 100'
6,977.1	6,742.5	143.2	106.2	EOB @ 89.00° Inc. / 0.35° Azm
17,064.6	6,918.6	10,229.0	168.2	TD @ 17064.6' MD / 6918.6' TVD