

# Construction and Storm Water Inspection

January 8, 2019

Operator: KERR MCGEE OIL & GAS ONSHORE LP – 47120

Location ID: 460006

Inspection Document #: 674902400

Weld County, CO

SESE Section 15 T1N R66W

Russell Beam  
Reclamation Specialist, COGCC



**COLORADO**  
Oil & Gas Conservation  
Commission

Department of Natural Resources

## Inspection Photos

Location Name: KERR MCGEE OIL & GAS ONSHORE LP – 47120/1N66W15

Location ID: 460006



**Photo 1.** Photo taken from the entrance of the location off CR 8, facing South. Operator has installed gravel potentially to limit tracking onto the county road. BMPs in proper functioning condition at the time of this inspection.



**Photo 2.** Photo taken from the entrance of the location off CR 8, facing Northwest. See comments from Photo 1.

## Inspection Photos

Location Name: KERR MCGEE OIL & GAS ONSHORE LP – 47120/1N66W15

Location ID: 460006



**Photo 3.** Photo taken from the southeastern perimeter of the location, facing North. Photo illustrates the ditch and berm BMP that has been installed around the perimeter of the location.



**Photo 4.** Photo taken from the southeastern perimeter of the location, facing West. See comments from Photo 1.



## Inspection Photos

Location Name: KERR MCGEE OIL & GAS ONSHORE LP – 47120/1N66W15

Location ID: 460006



**Photo 5.** Photo taken from the northeastern perimeter of the location, facing West. See comments from Photo 1.



**Photo 6.** Photo taken from the northeastern perimeter of the location, facing South. See comments from Photo 1.

## Inspection Photos

Location Name: KERR MCGEE OIL & GAS ONSHORE LP – 47120/1N66W15

Location ID: 460006



**Photo 7.** Photo taken from the northwestern perimeter of the location, facing West. Operator has installed a sediment trap with a temporarily stabilized outlet.



**Photo 8.** Photo taken from the northwestern perimeter of the location, facing South. See comments from Photo 7.



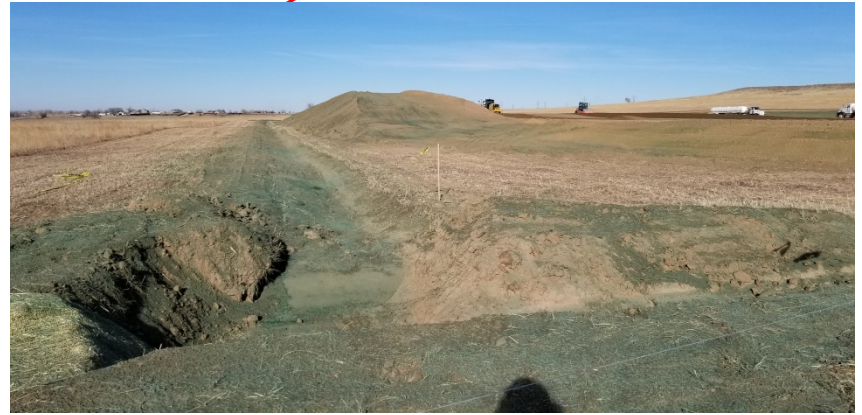
## Inspection Photos

Location Name: KERR MCGEE OIL & GAS ONSHORE LP – 47120/1N66W15

Location ID: 460006



**Photo 9.** Photo taken from the southwestern perimeter of the location, facing East. See comments from Photos 1 and 7.



**Photo 10.** Photo taken from the southwestern perimeter of the location, facing North. See comments from Photos 1 and 7.

## Inspection Photos

Location Name: KERR MCGEE OIL & GAS ONSHORE LP – 47120/1N66W15

Location ID: 460006



**Photo 11.** Photo taken from the Western perimeter of the location, facing South. The topsoil stockpile being stored along the western area has been temporarily stabilized with equipment tracking and hydroseed.



**Photo 12.** Photo taken from the Western perimeter of the location, facing South. See comments from Photo 11.