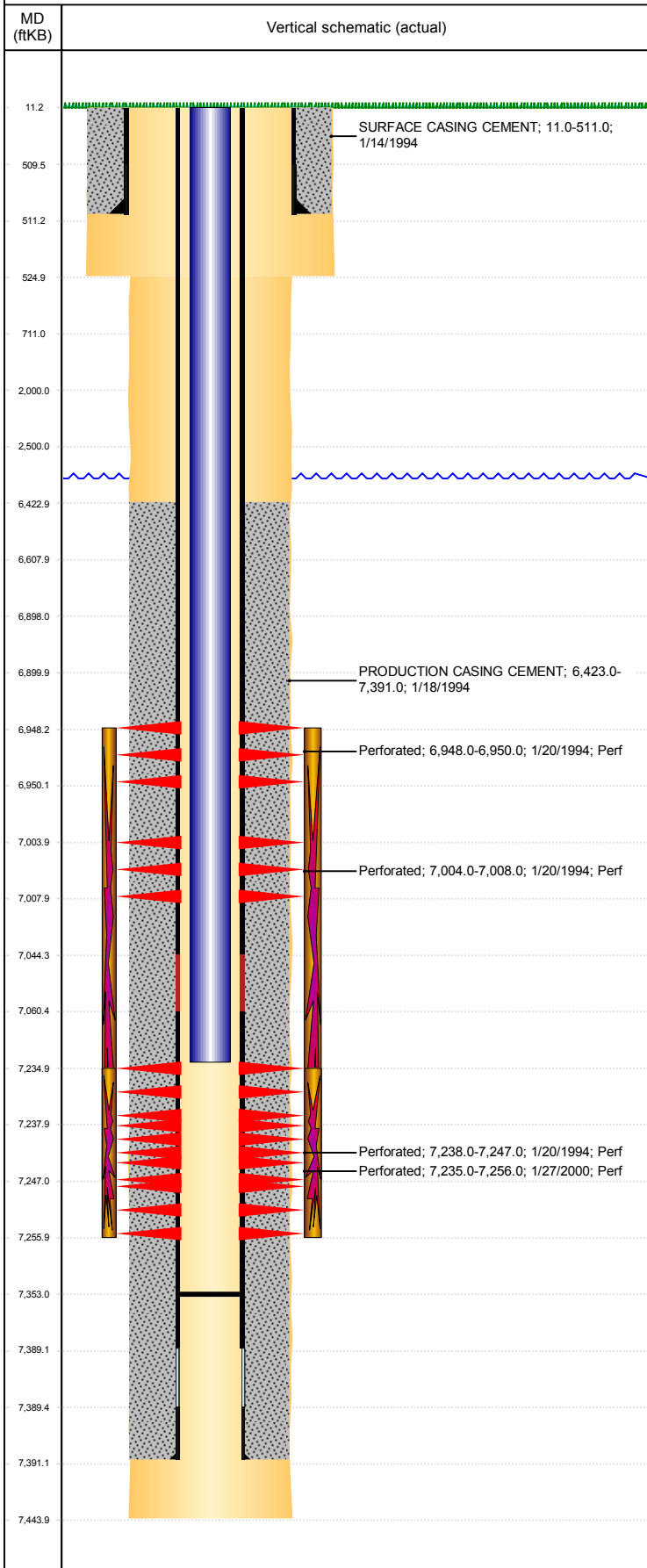


Well Name: UPRC 25-1217

VERTICAL, ORIGINAL HOLE, 1/10/2019 2:32:19 PM



Well Header									
API 05-123-17869		Business Unit DJ BASIN			District 15		Well Config VERTICAL		
KB - GL / MSL (ft... 11.00		Spud Date 1/13/1994		P & A Date		Well Production Status PR			SoRT No
Comment LIMITED ENTRY. NO CBL, TOC FROM SCHEMATIC. STATE SHOWS SHUT IN SINCE AUG 2017.									
Surface Location (Congressional)									
Qtr 3 NW	Qtr 4 SW	Section 25	Twonshp 4	Twonsh... N	Range 67	Rng E/... W	Actual Latitude (°) 40.28110459		Actual Longitude (°) -104.84700577
Wellbore Sections									
Section Des			Size (in)			Act Top, MD (ftKB)		Act Btm, MD (ftKB)	
SURFACE			12 1/4			11		525	
PRODUCTION			7 7/8			525		7,444	
Casing Strings									
Csg Des			Run Date		OD (in)	Wt/Len (lb/ft)	Grade	Top, MD (ftKB)	MD (ftKB)
Surface			1/14/1994		8 5/8	23.00	M-50	11.0	511.0
Production			1/18/1994		3 1/2	7.70	B-70	11.0	7,391.0
Cement									
Des					Start Date		Top (ftKB)		Btm (ftKB)
SURFACE CASING CEMENT					1/14/1994		11.0		511.0
PRODUCTION CASING CEMENT					1/18/1994		6,423.0		7,391.0
Zone Statuses									
Zone Name	Status Date	Status	Fluid Type		Job				Prod Method
NIOBRARA	2/7/1994	PR			DRILLING/COMPLETION - ORIGINAL, 1/13/1994...				Flowing
CODELL	2/12/2000	PR			RE-FRAC, 1/27/2000 00:00				Flowing
CODELL	2/5/2007	PR			TRI-FRAC, 12/6/2006 00:00				Flowing
Perforation Data									
Linked Zone		Bnch/Stg	Entered Shot Total	Top (ftKB)		Btm (ftKB)		Date	
NIOBRARA, ORIGINAL HOLE			2	6,948.00		6,950.00		1/20/1994	
NIOBRARA, ORIGINAL HOLE			4	7,004.00		7,008.00		1/20/1994	
CODELL, ORIGINAL HOLE			84	7,235.00		7,256.00		1/27/2000	
CODELL, ORIGINAL HOLE			9	7,238.00		7,247.00		1/20/1994	
Stimulation Intervals									
Zone				Start Date		Top (ftKB)		Btm (ftKB)	
NIOBRARA-CODELL, ORIGINAL HOLE				1/21/1994		6,948.0		7,247.0	
CODELL, ORIGINAL HOLE				2/10/2000		7,235.0		7,256.0	
CODELL, ORIGINAL HOLE				12/18/2006		7,235.0		7,256.0	
Other In Hole									
Run Date		Des				OD (in)	Top (ftKB)	Btm (ftKB)	
Logs									
Date		Type				Top, MD (ftKB)		Btm, MD (ftKB)	
1/17/1994		COMPENSATED DENSITY				4,090.0		7,442.0	
1/17/1994		INDUCTION				511.0		7,442.0	
1/20/1994		GAMMA RAY				6,850.0		7,355.0	
12/5/2018		GYRO				11.0		7,150.0	
Plug Back Total Depths									
Date		Type		Com				Depth (ftKB)	
1/18/1994		FLOAT COLLAR		TOP OF FLOAT COLLAR				7,364.0	
12/28/2006		FILL		TAG FILL				7,353.0	