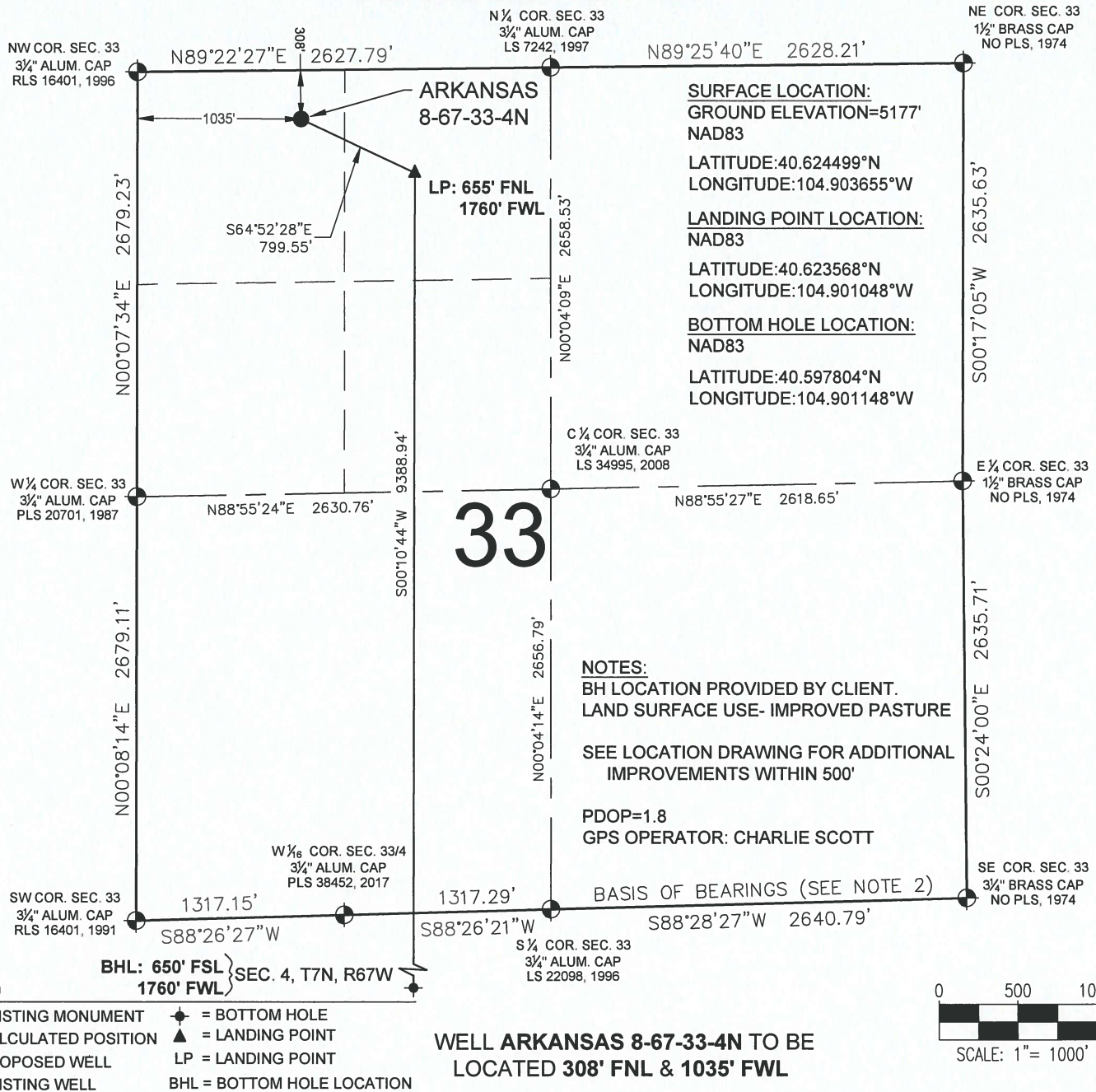


ARKANSAS 8-67-33-4N WELL LOCATION CERTIFICATE



LEGEND

- ⊕ = EXISTING MONUMENT
- = CALCULATED POSITION
- = PROPOSED WELL
- ◆ = EXISTING WELL
- ⬮ = BOTTOM HOLE
- ▲ = LANDING POINT
- LP = LANDING POINT
- BHL = BOTTOM HOLE LOCATION

NOTES:

- THIS FIELD SURVEY CONFORMS TO THE MINIMUM STANDARDS SET BY THE C.O.G.C.C., RULE NO. 215
- BEARINGS ARE BASED ON THE ASSUMPTION THAT THE SOUTH LINE OF THE SOUTHEAST QUARTER OF SECTION 33, BEARS S88°28'27"W BETWEEN THE MONUMENTS SHOWN HEREON.
- ALL DISTANCES AND BEARINGS SHOWN HEREON ARE GROUND VALUES AS GPS MEASURED IN THE FIELD, WITH TIES TO WELLS MEASURED PERPENDICULAR TO SECTION LINES. THIS LOW DISTORTION PROJECTION (LDP) IS BASED ON THE NORTH AMERICAN DATUM OF 1983, U.S. SURVEY FOOT WITH A LATITUDE ORIGIN OF 40.654362°N AND A LONGITUDE OF 104.887025°W AND A SCALE FACTOR ON THE CENTRAL MERIDIAN OF 1.000253 (EXACT). THE LDP BASIS OF BEARINGS IS GEODETIC NORTH.
- ELEVATIONS SHOWN ARE NAVD 88, AS DERIVED BY GPS OBSERVATIONS.
- FIELD VERIFICATION OF MONUMENTS COMPLETED WITHIN 1 YEAR OF SIGNATURE DATE.

NOTICE: ACCORDING TO COLORADO LAW YOU MUST COMMENCE ANY LEGAL ACTION BASED UPON ANY DEFECT IN THIS SURVEY WITHIN THREE YEARS AFTER YOU FIRST DISCOVER SUCH DEFECT. IN NO EVENT MAY ANY ACTION BASED UPON ANY DEFECT IN THIS SURVEY BE COMMENCED MORE THAN TEN YEARS FROM THIS SAID DATE OF THIS CERTIFICATION SHOWN HEREON.

WELL ARKANSAS 8-67-33-4N TO BE LOCATED 308' FNL & 1035' FWL

I, BRIAN C. RITZ, A LICENSED PROFESSIONAL LAND SURVEYOR IN THE STATE OF COLORADO DO HEREBY CERTIFY TO **ENERPLUS RESOURCES (USA) CORPORATION**, THAT THE SURVEY AND WELL LOCATION CERTIFICATE SHOWN HEREON WERE DONE BY ME OR UNDER MY DIRECT SUPERVISION AND THAT THE DRAWING SHOWN HEREON ACCURATELY DEPICTS THE PROPOSED LOCATION OF THE WELL. THIS CERTIFICATE DOES NOT REPRESENT A LAND SURVEY PLAT OR IMPROVEMENT SURVEY PLAT AS DEFINED BY C.R.S. 38-51-102 AND CANNOT BE RELIED UPON TO DETERMINE OWNERSHIP.

BRIAN C. RITZ, PLS 38452
COLORADO LICENSED PROFESSIONAL LAND SURVEYOR
FOR AND ON BEHALF OF P.F.S., LLC
d.b.a. ASCENT GEOMATICS SOLUTIONS



SHEET 1 OF 2



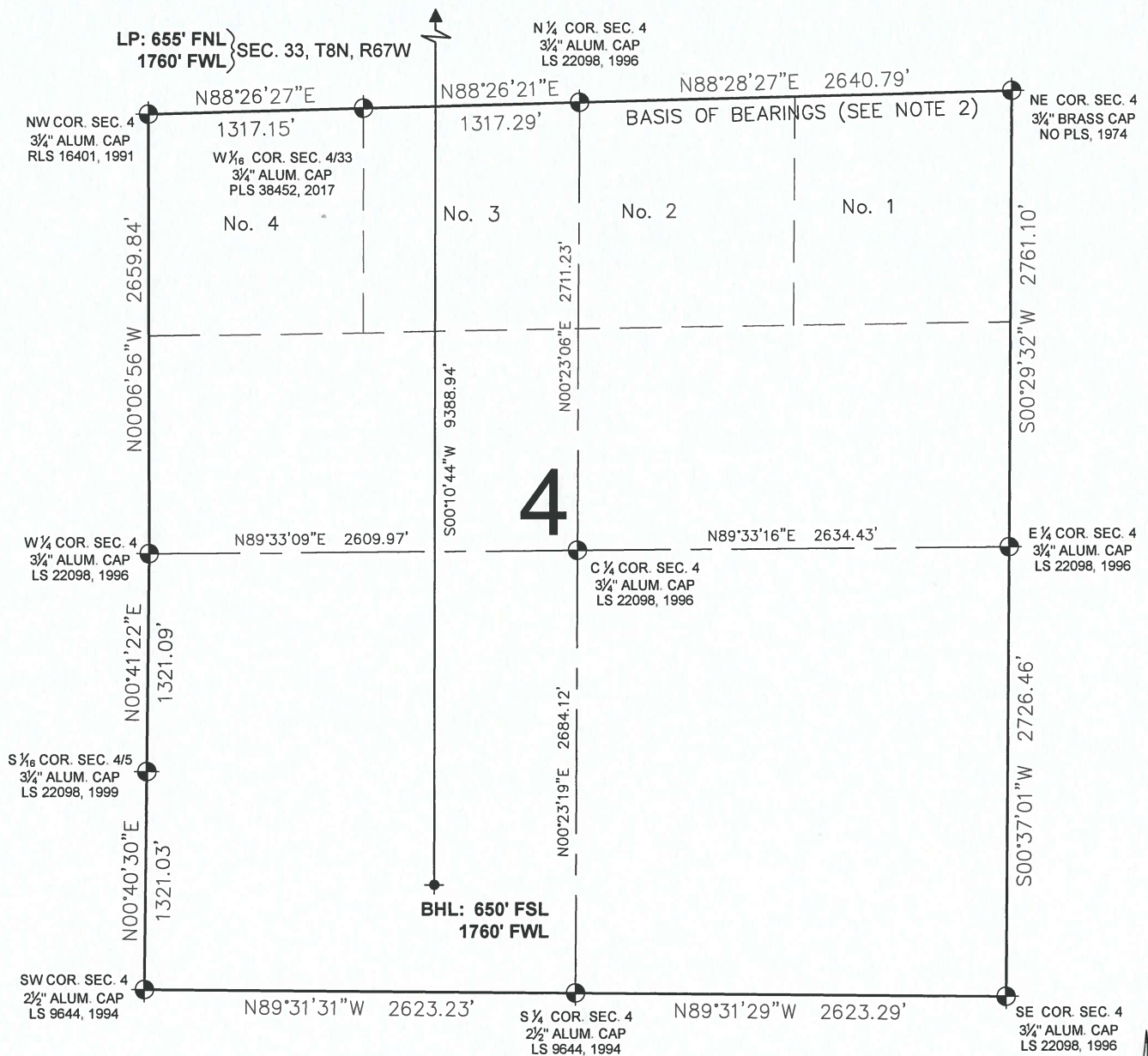
FIELD DATE:
06-30-17
DRAWING DATE:
08-14-17
BY:
DJP
CHECKED BY:
CSG

WELL NAME:
ARKANSAS 8-67-33-4N
SURFACE LOCATION:
NW 1/4 NW 1/4 SEC. 33, T8N, R67W, 6TH P.M.
WELD COUNTY, COLORADO

PREPARED FOR:

enerPLUS

ARKANSAS 8-67-33-4N WELL LOCATION CERTIFICATE



LEGEND

- ⊕ = EXISTING MONUMENT
- = CALCULATED POSITION
- = PROPOSED WELL
- ◆ = EXISTING WELL
- ⬮ = BOTTOM HOLE
- ▲ = LANDING POINT
- LP = LANDING POINT
- BHL = BOTTOM HOLE LOCATION

BRIAN C. RITZ, PLS 38452
COLORADO LICENSED PROFESSIONAL LAND SURVEYOR
FOR AND ON BEHALF OF P.F.S., LLC
d.b.a. ASCENT GEOMATICS SOLUTIONS



SHEET 2 OF 2



7535 Hilltop Circle
Denver, CO 80221
(303) 928-7128
www.ascentgeomatics.com

FIELD DATE: 06-30-17	WELL NAME: ARKANSAS 8-67-33-4N
DRAWING DATE: 08-14-17	SURFACE LOCATION: NW 1/4 NW 1/4 SEC. 33, T8N, R67W, 6TH P.M.
BY: DJP	CHECKED BY: CSG
	WELD COUNTY, COLORADO

PREPARED FOR:

enerPLUS