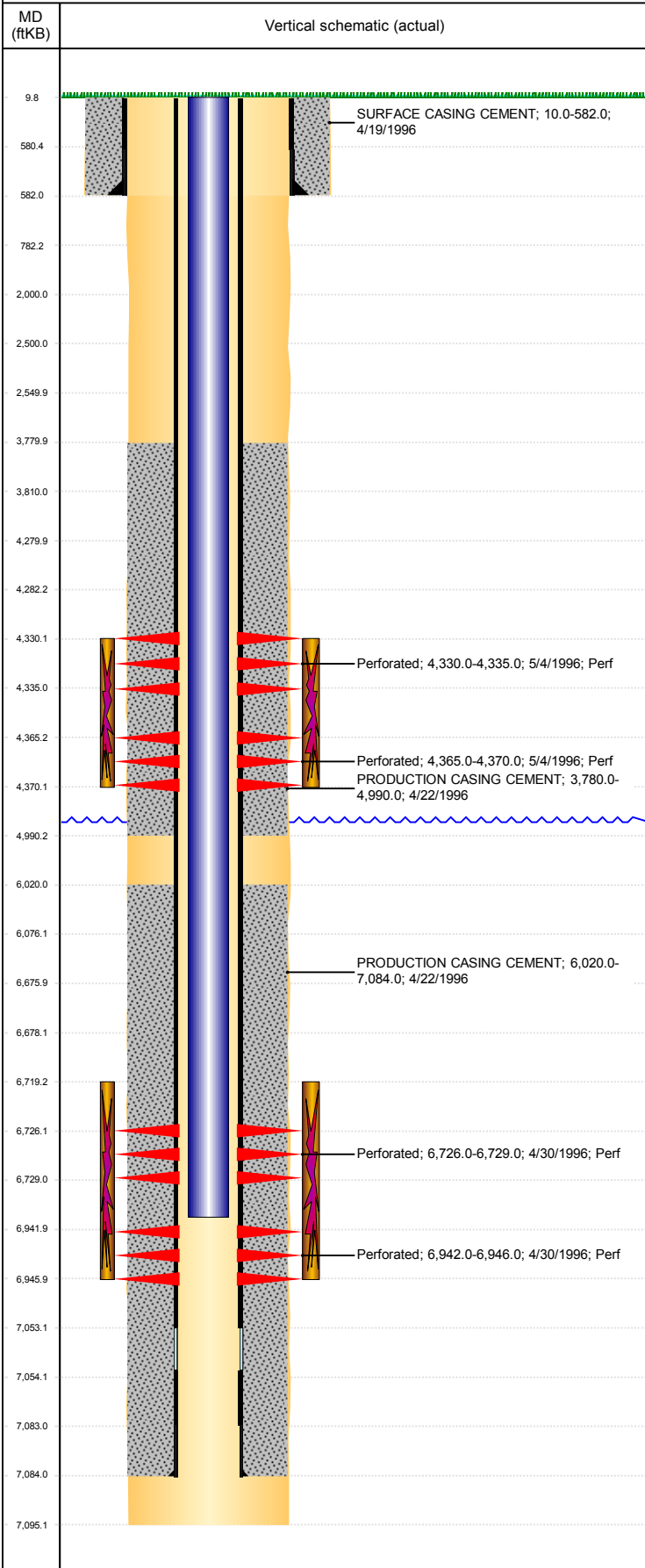


Well Name: HSR GUTTERSEN 03-15

VERTICAL, ORIGINAL HOLE, 1/9/2019 3:15:59 PM



Well Header	
API 05-123-19144	Business Unit DJ BASIN
District 15	Well Config VERTICAL
KB - GL / MSL (ft... 10.00	Spud Date 4/19/1996
P & A Date	Well Production Status PR
SoRT No	

Comment
LIMITED ENTRY

Surface Location (Congressional)

Qtr 3 NE	Qtr 4 NW	Section 15	Twshp 3	Twsh... N	Range 64	Rng E... W	Actual Latitude (°) 40.23089000	Actual Longitude (°) -104.53955000
-------------	-------------	---------------	------------	--------------	-------------	---------------	------------------------------------	---------------------------------------

Wellbore Sections

Section Des	Size (in)	Act Top, MD (ftKB)	Act Btm, MD (ftKB)
SURFACE	12 1/4	10	582
PRODUCTION	7 7/8	582	7,095

Casing Strings

Csg Des	Run Date	OD (in)	Wt/Len (lb/ft)	Grade	Top, MD (ftKB)	MD (ftKB)
Surface	4/19/1996	8 5/8	24.00	J-55	10.0	582.0
Production	4/22/1996	3 1/2	7.70	B-70	10.0	7,084.0

Cement

Des	Start Date	Top (ftKB)	Btm (ftKB)
SURFACE CASING CEMENT	4/19/1996	10.0	582.0
PRODUCTION CASING CEMENT	4/22/1996	3,780.0	4,990.0
PRODUCTION CASING CEMENT	4/22/1996	6,020.0	7,084.0

Zone Statuses

Zone Name	Status Date	Status	Fluid Type	Job	Prod Method
CODELL	5/14/1996	PR		DRILLING/COMPLETION - ORIGINAL, 4/19/1996...	Flowing
SUSSEX	5/14/1996	PR		DRILLING/COMPLETION - ORIGINAL, 4/19/1996...	Flowing
NIOBRARA	5/14/1996	PR		DRILLING/COMPLETION - ORIGINAL, 4/19/1996...	Flowing

Perforation Data

Linked Zone	Bnch/Stg	Entered Shot Total	Top (ftKB)	Btm (ftKB)	Date
SUSSEX, ORIGINAL HOLE		10	4,330.00	4,335.00	5/4/1996
SUSSEX, ORIGINAL HOLE		10	4,365.00	4,370.00	5/4/1996
NIOBRARA, ORIGINAL HOLE		7	6,726.00	6,729.00	4/30/1996
CODELL, ORIGINAL HOLE		8	6,942.00	6,946.00	4/30/1996

Stimulation Intervals

Zone	Start Date	Top (ftKB)	Btm (ftKB)
SUSSEX, ORIGINAL HOLE	5/6/1996	4,330.0	4,370.0
NIOBRARA-CODELL, ORIGINAL HOLE	5/1/1996	6,719.0	6,946.0

Other In Hole

Run Date	Des	OD (in)	Top (ftKB)	Btm (ftKB)

Logs

Date	Type	Top, MD (ftKB)	Btm, MD (ftKB)
4/22/1996	COMPENSATED DENSITY	4,100.0	7,093.0
4/22/1996	INDUCTION	582.0	7,095.0
4/30/1996	CEMENT BOND	3,650.0	7,017.0
8/16/2017	GYRO	0.0	6,800.0

Plug Back Total Depths

Date	Type	Com	Depth (ftKB)
4/30/1996	FILL	DEPTH LOGGER ON CBL	7,025.0
6/6/2005	FILL	BAIL AND SWAB BUT NO DEPTH GIVEN	