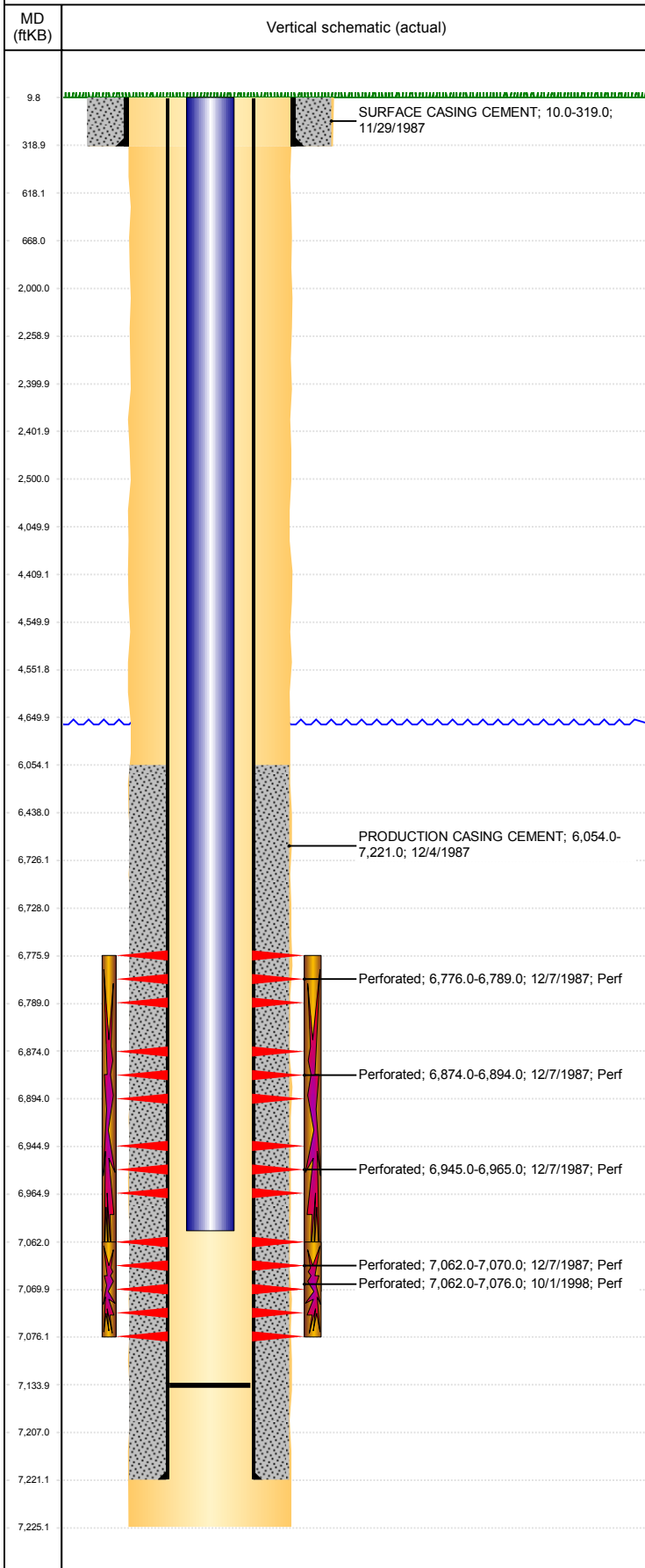


**Well Name: GEMINI B31-11**

VERTICAL, ORIGINAL HOLE, 1/4/2019 2:17:32 PM



Well Header									
API 05-123-13712		Business Unit DJ BASIN			District 15		Well Config VERTICAL		
KB - GL / MSL (ft... 10.00		Spud Date 11/29/1987		P & A Date		Well Production Status PR			SoRT No
Comment									
Surface Location (Congressional)									
Qtr 3 NE	Qtr 4 SW	Section 31	Twnshp 5	Twnsh... N	Range 64	Rng E/... W	Actual Latitude (°) 40.35386374	Actual Longitude (°) -104.59494979	
Wellbore Sections									
Section Des			Size (in)			Act Top, MD (ftKB)		Act Btm, MD (ftKB)	
SURFACE			12 1/4			10		319	
PRODUCTION			7 7/8			319		7,225	
Casing Strings									
Csg Des			Run Date		OD (in)	Wt/Len (lb/ft)	Grade	Top, MD (ftKB)	MD (ftKB)
Surface			11/29/1987		8 5/8	24.00	J-55	10.0	319.0
Production			12/4/1987		4 1/2	15.10		10.0	7,221.0
Cement									
Des					Start Date		Top (ftKB)		Btm (ftKB)
SURFACE CASING CEMENT					11/29/1987		10.0		319.0
PRODUCTION CASING CEMENT					12/4/1987		6,054.0		7,221.0
Zone Statuses									
Zone Name		Status Date	Status	Fluid Type	Job			Prod Method	
NIOBRARA		12/16/1987	PR		DRILLING/COMPLETION - ORIGINAL, 11/29/198...				
CODELL		12/16/1987	PR		DRILLING/COMPLETION - ORIGINAL, 11/29/198...				
Perforation Data									
Linked Zone			Bnch/Stg	Entered Shot Total	Top (ftKB)		Btm (ftKB)		Date
NIOBRARA, ORIGINAL HOLE			A	3	6,776.00		6,789.00		12/7/1987
NIOBRARA, ORIGINAL HOLE			B	5	6,874.00		6,894.00		12/7/1987
NIOBRARA, ORIGINAL HOLE			C		6,945.00		6,965.00		12/7/1987
CODELL, ORIGINAL HOLE				56	7,062.00		7,076.00		10/1/1998
CODELL, ORIGINAL HOLE				6	7,062.00		7,070.00		12/7/1987
Stimulation Intervals									
Zone					Start Date		Top (ftKB)		Btm (ftKB)
NIOBRARA-CODELL, ORIGINAL HOLE					12/8/1987		6,776.0		7,070.0
CODELL, ORIGINAL HOLE					10/8/1998		7,062.0		7,076.0
Other In Hole									
Run Date		Des				OD (in)	Top (ftKB)		Btm (ftKB)
Logs									
Date		Type				Top, MD (ftKB)		Btm, MD (ftKB)	
12/3/1987		COMPENSATED DENSITY				300.0		7,220.0	
12/3/1987		INDUCTION				300.0		7,220.0	
12/7/1987		ACOUSTIC				5,850.0		7,134.0	
5/27/2016		GYRO				0.0		6,900.0	
Plug Back Total Depths									
Date		Type		Com					Depth (ftKB)
12/7/1987				DEPTH LOGGER					7,207.0
									7,134.0