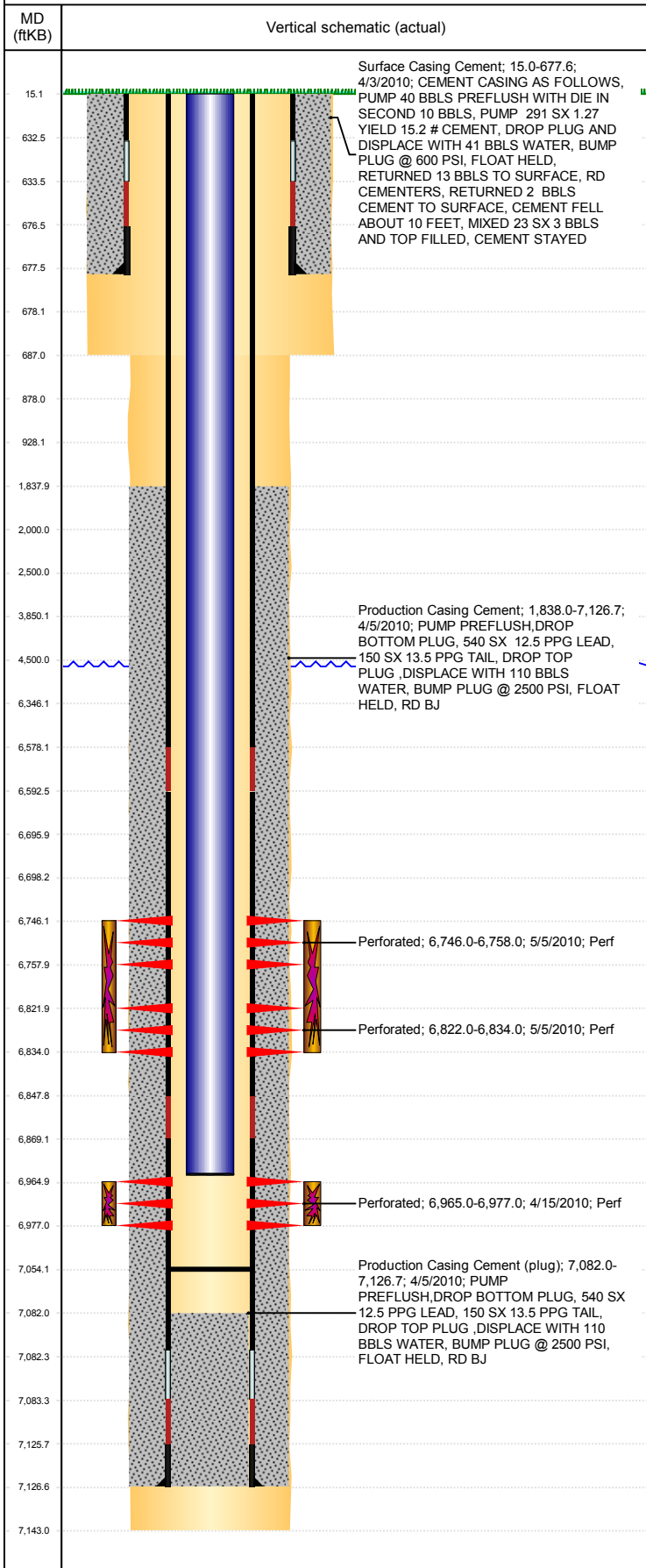


Well Name: GUTTERSEN D15-20

VERTICAL, ORIGINAL HOLE, 1/8/2019 11:19:46 AM



Well Header									
API 05-123-30692		Business Unit DJ BASIN			District 15		Well Config VERTICAL		
KB - GL / MSL (ft... 15.00		Spud Date 4/2/2010		P & A Date		Well Production Status PR		SoRT No	
Comment 318Ae LOCATION -									
Surface Location (Congressional)									
Qtr 3 SW	Qtr 4 NW	Section 15	Twnshp 3	Twنش... N	Range 64	Rng E/... W	Actual Latitude (°) 40.22571066	Actual Longitude (°) -104.54220893	
Wellbore Sections									
Section Des			Size (in)			Act Top, MD (ftKB)		Act Btm, MD (ftKB)	
SURFACE			12 1/4			15		687	
PRODUCTION			7 7/8			687		7,143	
Casing Strings									
Csg Des			Run Date		OD (in)	Wt/Len (lb/ft)	Grade	Top, MD (ftKB)	MD (ftKB)
Surface			4/2/2010		8 5/8	32.00	J-55	15.0	677.6
Production			4/5/2010		4 1/2	11.60	M-80	15.0	7,126.7
Cement									
Des					Start Date		Top (ftKB)		Btm (ftKB)
Surface Casing Cement					4/3/2010		15.0		677.6
Production Casing Cement					4/5/2010		1,838.0		7,126.7
Zone Statuses									
Zone Name	Status Date	Status	Fluid Type	Job				Prod Method	
NIOBRARA	5/7/2010	PR		DRILLING/COMPLETION - ORIGINAL, 4/2/2010...					
CODELL	5/7/2010	PR		DRILLING/COMPLETION - ORIGINAL, 4/2/2010...					
Perforation Data									
Linked Zone			Bnch/Stg	Entered Shot Total	Top (ftKB)		Btm (ftKB)		Date
NIOBRARA, ORIGINAL HOLE			B	24	6,746.00		6,758.00		5/5/2010
NIOBRARA, ORIGINAL HOLE			C	24	6,822.00		6,834.00		5/5/2010
CODELL, ORIGINAL HOLE			01	48	6,965.00		6,977.00		4/15/2010
Stimulation Intervals									
Zone				Start Date		Top (ftKB)		Btm (ftKB)	
NIOBRARA, ORIGINAL HOLE				5/5/2010		6,746.0		6,834.0	
CODELL, ORIGINAL HOLE				5/5/2010		6,965.0		6,977.0	
Other In Hole									
Run Date		Des				OD (in)	Top (ftKB)	Btm (ftKB)	
Logs									
Date		Type				Top, MD (ftKB)		Btm, MD (ftKB)	
4/5/2010		Caliper/Comp. Density/Neutron/GR/SP/ML				2,550.0		7,115.0	
4/5/2010		DIL/GR/SP/Caliper				677.0		7,135.0	
4/12/2010		CBL/CCL/GR				1,360.0		7,053.0	
8/9/2017		GYRO				0.0		6,850.0	
Plug Back Total Depths									
Date		Type		Com				Depth (ftKB)	
4/5/2010		FLOAT COLLAR		FLOAT COLLAR				7,082.0	
4/12/2010		FILL						7,054.0	