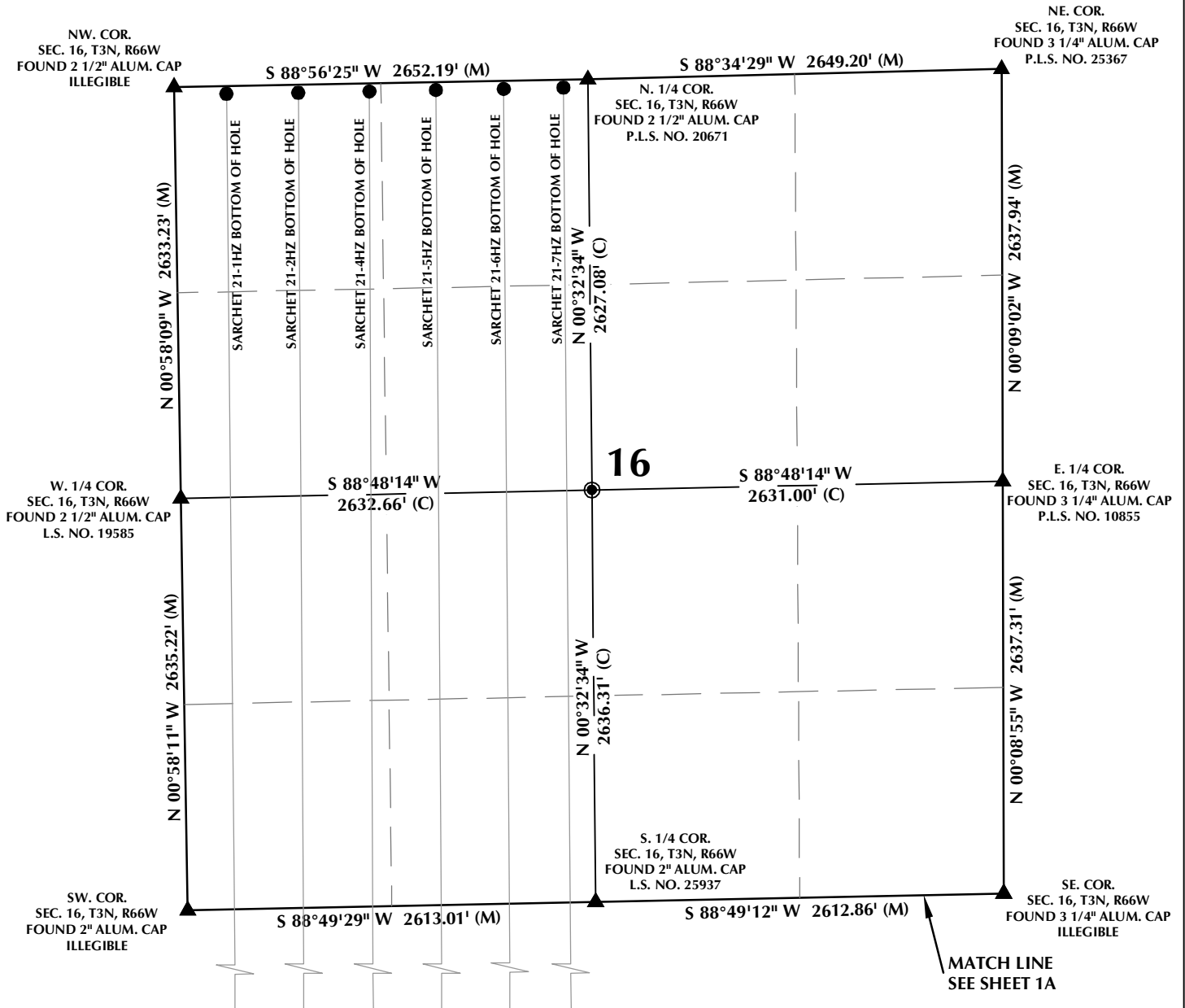




# MULTI-WELL PLAN SECTION 16, T3N, R66W



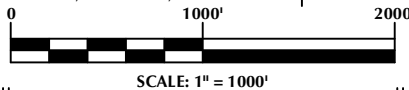
## WELL NOTES:

**SARCHET 21-1HZ**  
 SURFACE: 640' FSL, 341' FWL, SEC. 21  
 BOTTOM HOLE: 49' FNL, 335' FWL, SEC. 16  
**SARCHET 21-2HZ**  
 SURFACE: 625' FSL, 341' FWL, SEC. 21  
 BOTTOM HOLE: 51' FNL, 795' FWL, SEC. 16  
**SARCHET 21-3HZ**  
 SURFACE: 610' FSL, 340' FWL, SEC. 21  
 BOTTOM HOLE: 50' FSL, 921' FWL, SEC. 28  
**SARCHET 21-4HZ**  
 SURFACE: 595' FSL, 340' FWL, SEC. 21  
 BOTTOM HOLE: 50' FNL, 1251' FWL, SEC. 16

**SARCHET 21-5HZ**  
 SURFACE: 580' FSL, 340' FWL, SEC. 21  
 BOTTOM HOLE: 50' FNL, 1677' FWL, SEC. 16  
**SARCHET 21-6HZ**  
 SURFACE: 550' FSL, 339' FWL, SEC. 21  
 BOTTOM HOLE: 51' FNL, 2112' FWL, SEC. 16  
**SARCHET 21-7HZ**  
 SURFACE: 565' FSL, 339' FWL, SEC. 21  
 BOTTOM HOLE: 49' FNL, 2495' FWL, SEC. 16

## NOTES:

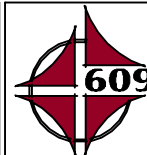
- ▲ INDICATES SECTION CORNER.
- INDICATES CALCULATED CORNER.
- BASIS OF BEARING DERIVED FROM COLORADO COORDINATE SYSTEM OF 1983 NORTH ZONE.
- ALL MEASURED DISTANCES ARE GRID.
- COMBINED SCALE FACTOR: .99972278 CALCULATED FROM THE W. 1/4 CORNER OF SECTION 21, T3N, R66W.
- WELL FOOTAGES ARE MEASURED AT RIGHT ANGLES TO THE SECTION LINES.



## WELL PAD - SARCHET 35-21HZ

MULTI-WELL PLAN  
 SARCHET 21-1HZ,  
 SARCHET 21-2HZ, SARCHET 21-3HZ,  
 SARCHET 21-4HZ, SARCHET 21-5HZ,  
 SARCHET 21-6HZ & SARCHET 21-7HZ  
 LOCATED IN SECTIONS 16, 21 & 28  
 T3N, R66W, 6TH P.M.  
 WELD COUNTY, COLORADO

**Kerr-McGee Oil &  
 Gas Onshore L.P.**  
 1099 18th Street  
 Denver, Colorado 80202



## CONSULTING, LLC

**SHERIDAN OFFICE**  
 1095 Saberton Avenue  
 Sheridan, Wyoming 82801  
 Phone 307-674-0609

**LOVELAND OFFICE**  
 6706 North Franklin Avenue  
 Loveland, Colorado 80538  
 Phone 970-776-4331

DRAFTED BY:	LMO	CHECKED BY:	RKF	SHEET NO:
DATE DRAFTED:	9/25/18	DATE SURVEYED:	9/3/18	<b>1B</b>
REVISED:		FILE NAME:	17-222	1B OF 1

## \\ANADARKO\2017\2017\_222\_NILES\_MILLER\_T3N\_R66W\_SEC\_20\PLATS\SARCHET 35-21HZ MW.dwg, 9/25/2018 10:26:56 AM, lisa

