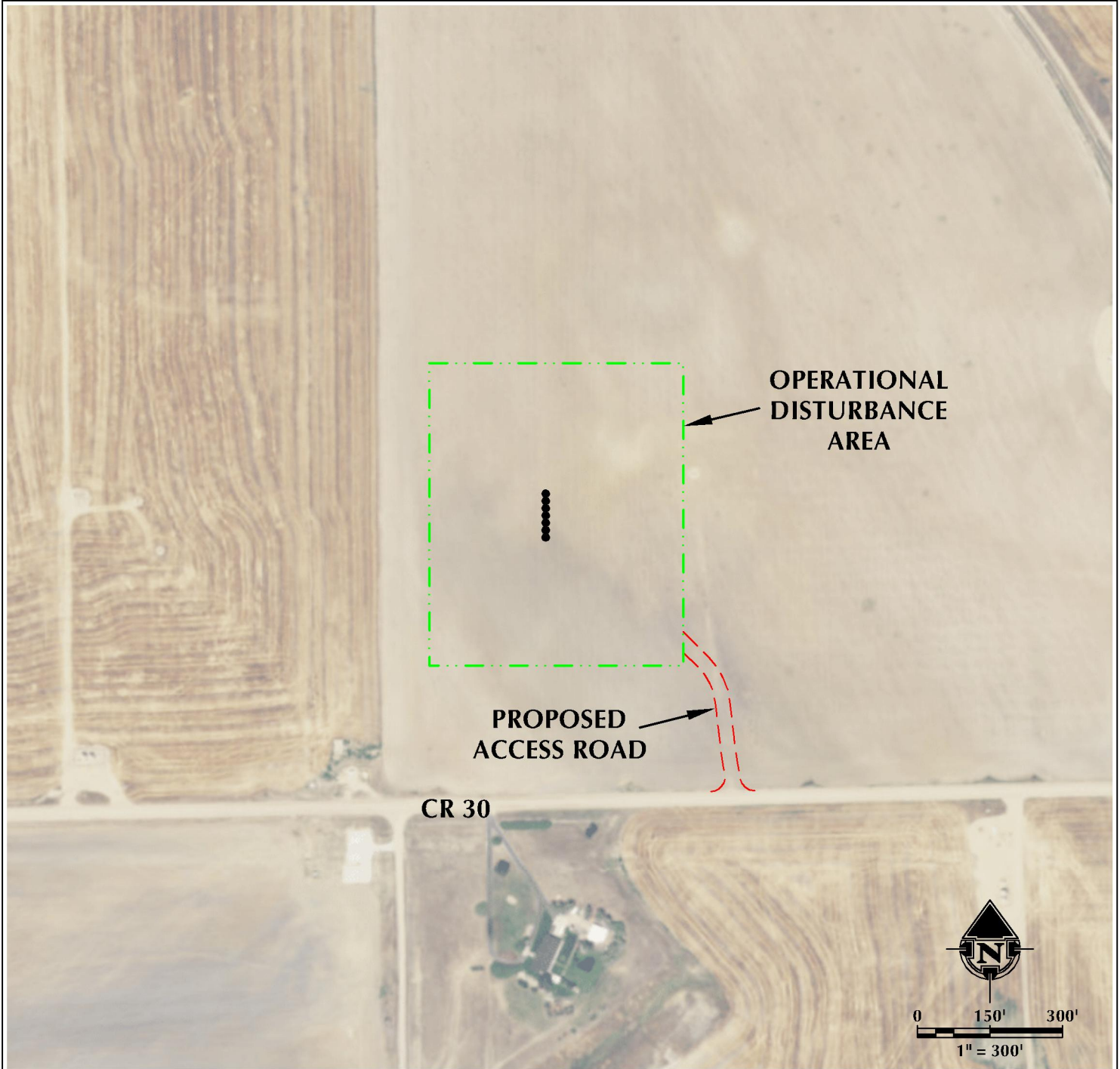


SARCHET 35-21HZ ACCESS MAP

SW1/4 SW1/4 SECTION 21, TOWNSHIP 3 NORTH, RANGE 66 WEST, 6TH P.M.



LEGEND

- PROPOSED WELL
- - - ACCESS
- - - DISTURBANCE BOUNDARY

INTERSECTION OF
ACCESS ROAD AND CR 30
LATITUDE: 40.203219°
LONGITUDE: -104.789008°



CONSULTING, LLC
LOVELAND OFFICE
6706 North Franklin Avenue
Loveland, Colorado 80538
Phone: 970-776-4331

SHERIDAN OFFICE
1095 Saberton Avenue
Sheridan, Wyoming 82801
Phone: 307-674-0609

DATE SURVEYED: 9/3/18
DATE: 9/26/18
DRAFTER: SCB
REVISED:

DATA SOURCES:
- AERIAL COURTESY OF ESRI, INC.

PREPARED FOR:
Kerr-McGee Oil & Gas Onshore L.P.