



December 20, 2018

Ms. Julie Murphy, Director  
Colorado Oil and Gas Conservation Commission  
1120 Lincoln Street, Suite 801  
Denver, CO 80203

**RE: COGCC Rule 318A.e.: Proposed Wellbore Spacing Unit**

Sanford 26N-27C-XR

5N-66W Sec 20; SESW, S2SE; Sec 21: S2S2; Sec 22: S2S2; Sec 27: N2N2; Sec 28: N2N2; Sec 29: N2NE, NENW  
878.140

Dear Director Murphy,

SRC Energy Inc. ("SRC Energy") is planning to drill the above referenced well in accordance with the provisions set out in COGCC Rule 318A.e. SRC Energy's proposed wellbore spacing unit consists of:

Sanford 26N-27C-XR

5N-66W Sec 20; SESW, S2SE; Sec 21: S2S2; Sec 22: S2S2; Sec 27: N2N2; Sec 28: N2N2; Sec 29: N2NE, NENW  
878.140

SRC Energy is not the only owner within the proposed wellbore spacing unit and hereby certifies to the Director that a thirty day (30-day) notice has been given by certified mail to all owners in the proposed wellbore spacing unit, as required by COGCC Rule 318A.e. (5). Copies of the required notification letters are on file at SRC Energy's office. The required thirty (30) day notice period has elapsed absent the receipt by SRC Energy of any objection to their proposal by the owner(s) within the proposed spacing unit for the subject well. We have not received any objections to such well location or proposed spacing unit, therefore, SRC Energy hereby requests the Director approve the well.

Enclosed is the Proposed Spacing Unit Plat to assist in your review and approval of SRC Energy's proposed Application for Permit to Drill (APD) for Sanford 26N-27C-XR well. SRC Energy respectfully requests the COGCC to review the enclosed information and approve the exception location waiver request per Surface Use Agreement and APD for Sanford 26N-27C-XR.

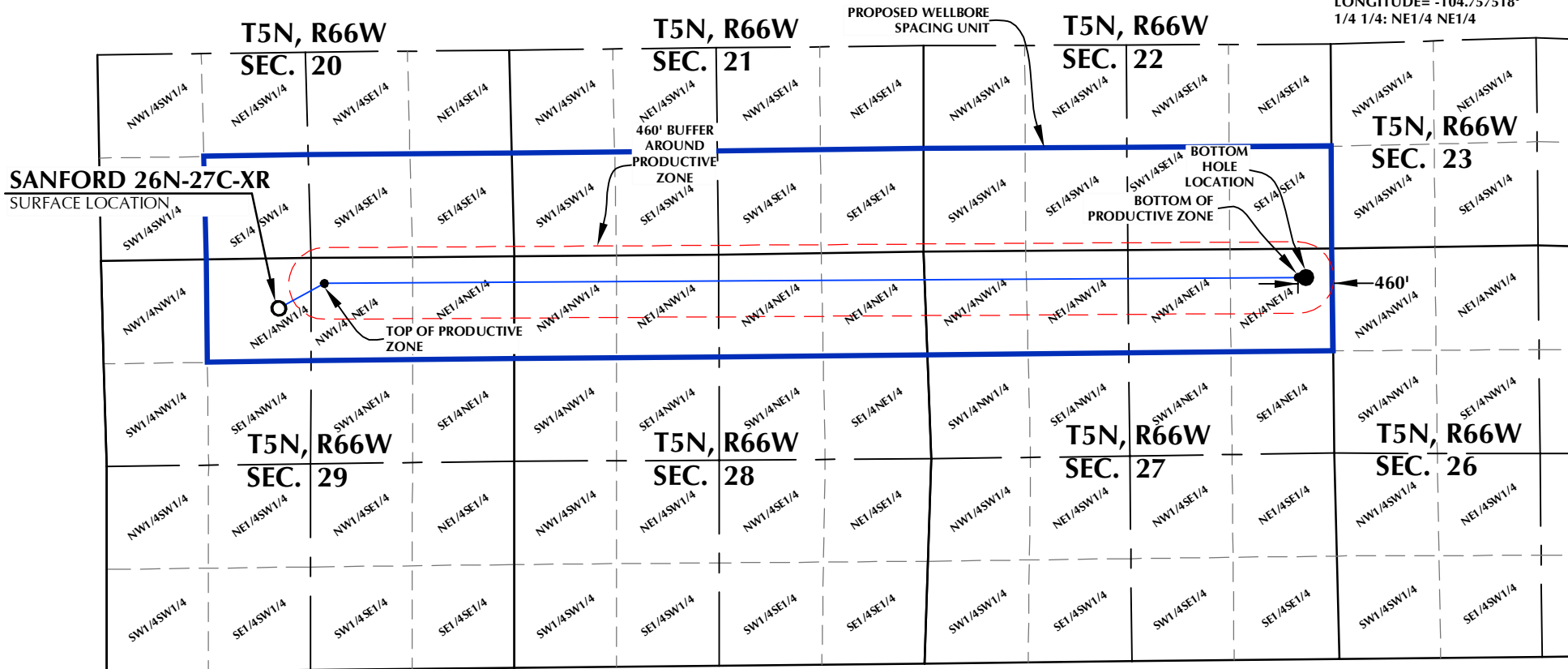
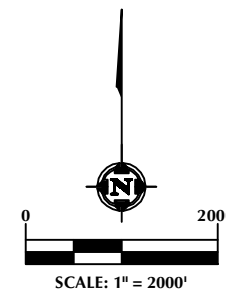
Thank you,  
*Erin Ekblad*  
Erin Ekblad  
Manager of Regulatory Affairs  
SRC Energy Inc.

Attachment: Proposed Spacing Unit Plat

DISTANCE FROM COMPLETED  
PORTION OF WELLBORE TO  
NEAREST UNIT BOUNDARY= 460'

# SANFORD 26N-27C-XR WELLBORE SPACING UNIT

**SURFACE HOLE LOCATION**  
GROUND ELEVATION= 4906.0'  
LATITUDE= 40.375965°  
LONGITUDE= -104.804913°  
1/4 1/4: NE1/4 NW1/4  
**TOP OF PRODUCTIVE ZONE**  
LATITUDE= 40.376833°  
LONGITUDE= -104.802798°  
1/4 1/4: NW1/4 NE1/4  
**BOTTOM OF PRODUCTIVE ZONE**  
LATITUDE= 40.376761°  
LONGITUDE= -104.757877°  
1/4 1/4: NE1/4 NE1/4  
**BOTTOM HOLE LOCATION**  
LATITUDE= 40.376761°  
LONGITUDE= -104.757518°  
1/4 1/4: NE1/4 NE1/4



## WELL PAD - SANFORD 21-29 PAD

SANFORD 26N-27C-XR  
WELLBORE SPACING UNIT  
651' FNL & 2244' FWL NENW (SURFACE HOLE LOCATION)  
338' FNL & 2461' FEL NWN (TOP OF PRODUCTIVE ZONE)  
LOCATED IN SECTION 29  
377' FNL & 460' FEL NENE (BOTTOM OF PRODUCTIVE ZONE)  
377' FNL & 360' FEL NENE (BOTTOM HOLE LOCATION)  
LOCATED IN SECTION 27  
T5N, R66W, 6TH P.M.  
WELD COUNTY, COLORADO



**SRC ENERGY**  
1675 Broadway, Suite 2600  
Denver, Colorado 80202



## CONSULTING, LLC

**SHERIDAN OFFICE**  
1095 Saberton Avenue  
Sheridan, Wyoming 82801  
Phone 307-674-0609

**LOVELAND OFFICE**  
6706 North Franklin Avenue  
Loveland, Colorado 80538  
Phone 970-776-4331

DRAFTED BY:	LMO	CHECKED BY:	RKF
DATE DRAFTED:	9/14/18	DATE SURVEYED:	8/30/18
REVISED:	11/7/18	FILE NAME:	17-232

## NOTES:

1. DRAWING LATITUDE AND LONGITUDE COORDINATES ARE NAD 83 (2011)(EPOCH:2010).
2. ELEVATION BASED ON NAVD88 (GEOID12B).
3. BASIS OF BEARING DERIVED FROM COLORADO COORDINATE SYSTEM OF 1983 NORTH ZONE.
4. ALL MEASURED DISTANCES ARE GRID. COMBINED SCALE FACTOR: .99972855 CALCULATED FROM THE E. 1/4 CORNER OF SECTION 29, T5N, R66W.