

SRC ENERGY

WELD COUNTY (NAD83, TRUE NORTH)

5N-66W-29 SANFORD 21-29 PAD

SANFORD 26N-27C-XR

Wellbore #1

Plan: Design #1

Standard Planning Report

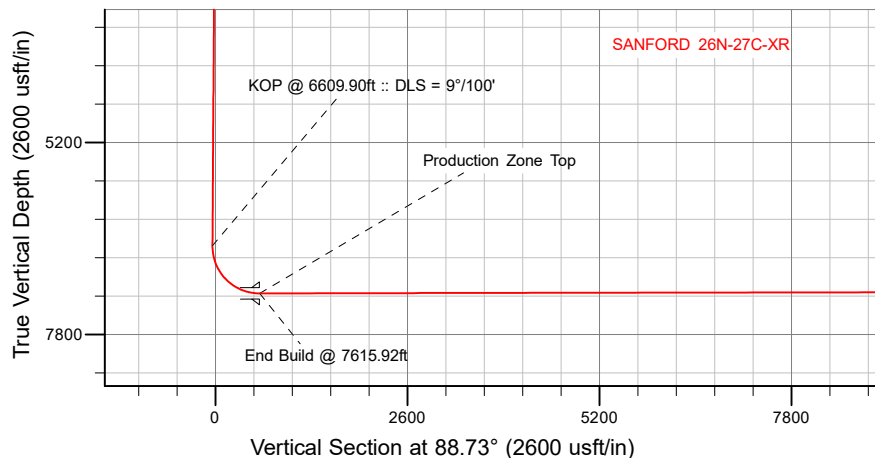
25 October, 2018

Project: WELD COUNTY (NAD83, TRUE NORTH)
Site: 5N-66W-29 SANFORD 21-29 PAD
Well: SANFORD 26N-27C-XR
Wellbore: Wellbore #1
Design: Design #1

SRC ENERGY

CASING DETAILS

TVD	MD	Name
1800.00	1801.62	9 5/8"
7244.00	7615.92	Production Zone Top



SECTION DETAILS

Sec	MD	Inc	Azi	TVD	+N/-S	+E/-W	Dleg	TFace	VSect	Target
1	0.00	0.00	0.00	0.00	0.00	0.00	0.00	0.00	0.00	
2	200.00	0.00	0.00	200.00	0.00	0.00	0.00	0.00	0.00	
3	332.50	2.65	350.50	332.45	3.02	-0.51	2.00	350.50	-0.44	
4	6609.90	2.65	350.50	6603.14	289.28	-48.41	0.00	0.00	-41.97	
5	7615.92	90.10	90.11	7244.00	317.37	589.36	9.00	99.59	596.26	
6	20231.13	90.10	90.11	7222.00	293.52	13204.52	0.00	0.00	13207.78	SANFORD 26N-27C-XR_BHL

WELLBORE TARGET DETAILS (LAT/LONG)

Name	TVD	+N/-S	+E/-W	Latitude	Longitude
SANFORD 26N-27C-XR_BPZ	0.00	293.47	13104.50	40.376761	-104.757877
SANFORD 26N-27C-XR_SHL	0.00	0.00	0.00	40.375965	-104.804913
SANFORD 26N-27C-XR_BHL	7222.00	293.52	13204.52	40.376761	-104.757518

WELL DETAILS: SANFORD 26N-27C-XR

GL = 4905'

RKB = 4' @ 4909.00usft (RIG)

Plan: Design #1 (SANFORD 26N-27C-XR/Wellbore #1)

Date: 10/25/2015

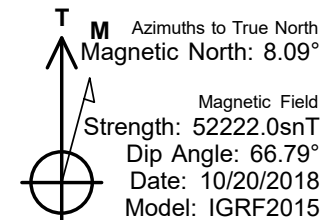
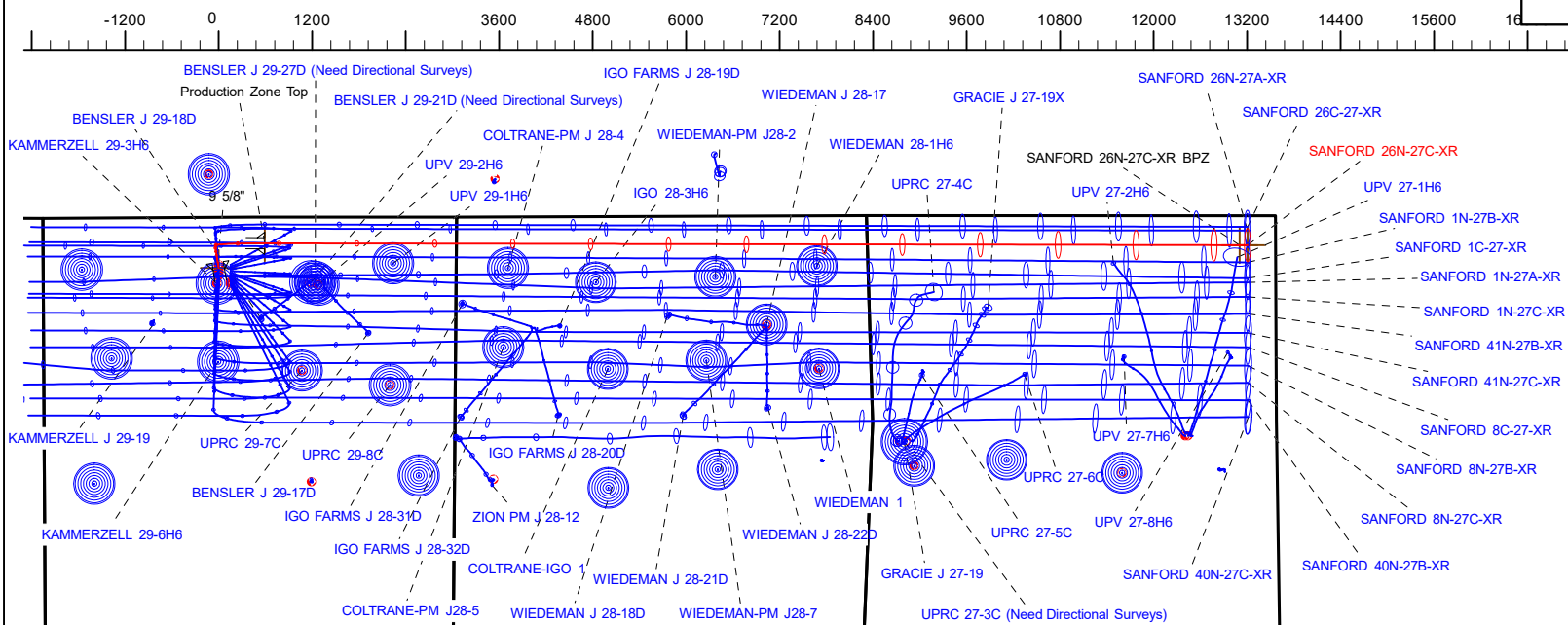
SHL
651' FNL
2244' FWL

LP
338' FNL
2461' FEL
40.376833° Lat
-104.802798° Long

BPZ
377' FNL
460' FEL

BHL
377' FNL
360' FEL

West(-)/East(+) (2400 usft/in)



South(-)/North(+) (2400 usft/in)

Hewlett-Packard

Planning Report

Database:	EDM 5000.14 Single User Db	Local Co-ordinate Reference:	Well SANFORD 26N-27C-XR
Company:	SRC ENERGY	TVD Reference:	RKB = 4' @ 4909.00usft (RIG)
Project:	WELD COUNTY (NAD83, TRUE NORTH)	MD Reference:	RKB = 4' @ 4909.00usft (RIG)
Site:	5N-66W-29 SANFORD 21-29 PAD	North Reference:	True
Well:	SANFORD 26N-27C-XR	Survey Calculation Method:	Minimum Curvature
Wellbore:	Wellbore #1		
Design:	Design #1		

Project	WELD COUNTY (NAD83, TRUE NORTH)		
Map System:	US State Plane 1983	System Datum:	Mean Sea Level
Geo Datum:	North American Datum 1983		
Map Zone:	Colorado Northern Zone		

Site	5N-66W-29 SANFORD 21-29 PAD			
Site Position:		Northing:	1,380,603.61 usft	Latitude: 40.376075
From:	Lat/Long	Easting:	3,193,654.99 usft	Longitude: -104.804914
Position Uncertainty:	0.00 usft	Slot Radius:	13-3/16 "	Grid Convergence: 0.45 °

Well	SANFORD 26N-27C-XR			
Well Position	+N/-S	-40.08 usft	Northing:	1,380,563.53 usft
	+E/-W	0.28 usft	Easting:	3,193,655.58 usft
Position Uncertainty		3.28 usft	Wellhead Elevation:	Latitude: 40.375965
				Longitude: -104.804913
				Ground Level: 4,905.00 usft

Wellbore	Wellbore #1				
Magnetics	Model Name	Sample Date	Declination (°)	Dip Angle (°)	Field Strength (nT)
	IGRF2015	10/20/2018	8.09	66.79	52,221.95414663

Design	Design #1			
Audit Notes:				
Version:	Phase:	PLAN	Tie On Depth:	0.00
Vertical Section:	Depth From (TVD) (usft)	+N/-S (usft)	+E/-W (usft)	Direction (°)
	0.00	0.00	0.00	88.73

Plan Survey Tool Program	Date	10/25/2018		
Depth From (usft)	Depth To (usft)	Survey (Wellbore)	Tool Name	Remarks
1	0.00	1,800.00	Design #1 (Wellbore #1)	SRC Energy_ISCWSA REV 2
				Fixed:v2:crustal field declinatio
2	7,664.00	20,231.13	Design #1 (Wellbore #1)	SRC Energy_ISCWSA REV 2
				Fixed:v2:Rockies, crustal dec +

Plan Sections										
Measured Depth (usft)	Inclination (°)	Azimuth (°)	Vertical Depth (usft)	+N/-S (usft)	+E/-W (usft)	Dogleg Rate (°/100usft)	Build Rate (°/100usft)	Turn Rate (°/100usft)	TFO (°)	Target
0.00	0.00	0.00	0.00	0.00	0.00	0.00	0.00	0.00	0.00	
200.00	0.00	0.00	200.00	0.00	0.00	0.00	0.00	0.00	0.00	
332.50	2.65	350.50	332.45	3.02	-0.51	2.00	2.00	0.00	350.50	
6,609.90	2.65	350.50	6,603.14	289.28	-48.41	0.00	0.00	0.00	0.00	
7,615.92	90.10	90.11	7,244.00	317.37	589.36	9.00	8.69	9.90	99.59	
20,231.13	90.10	90.11	7,222.00	293.52	13,204.52	0.00	0.00	0.00	0.00	SANFORD 26N-27C-XR

Hewlett-Packard

Planning Report

Database:	EDM 5000.14 Single User Db	Local Co-ordinate Reference:	Well SANFORD 26N-27C-XR
Company:	SRC ENERGY	TVD Reference:	RKB = 4' @ 4909.00usft (RIG)
Project:	WELD COUNTY (NAD83, TRUE NORTH)	MD Reference:	RKB = 4' @ 4909.00usft (RIG)
Site:	5N-66W-29 SANFORD 21-29 PAD	North Reference:	True
Well:	SANFORD 26N-27C-XR	Survey Calculation Method:	Minimum Curvature
Wellbore:	Wellbore #1		
Design:	Design #1		

Planned Survey									
Measured Depth (usft)	Inclination (°)	Azimuth (°)	Vertical Depth (usft)	+N/-S (usft)	+E/-W (usft)	Vertical Section (usft)	Dogleg Rate (°/100usft)	Build Rate (°/100usft)	Turn Rate (°/100usft)
0.00	0.00	0.00	0.00	0.00	0.00	0.00	0.00	0.00	0.00
100.00	0.00	0.00	100.00	0.00	0.00	0.00	0.00	0.00	0.00
200.00	0.00	0.00	200.00	0.00	0.00	0.00	0.00	0.00	0.00
Begin Nudge @ 200.00ft									
300.00	2.00	350.50	299.98	1.72	-0.29	-0.25	2.00	2.00	0.00
332.50	2.65	350.50	332.45	3.02	-0.51	-0.44	2.00	2.00	0.00
Hold Tangent @ 332.50ft									
400.00	2.65	350.50	399.88	6.10	-1.02	-0.88	0.00	0.00	0.00
500.00	2.65	350.50	499.77	10.66	-1.78	-1.55	0.00	0.00	0.00
600.00	2.65	350.50	599.67	15.22	-2.55	-2.21	0.00	0.00	0.00
700.00	2.65	350.50	699.56	19.78	-3.31	-2.87	0.00	0.00	0.00
800.00	2.65	350.50	799.45	24.34	-4.07	-3.53	0.00	0.00	0.00
900.00	2.65	350.50	899.35	28.90	-4.84	-4.19	0.00	0.00	0.00
1,000.00	2.65	350.50	999.24	33.46	-5.60	-4.85	0.00	0.00	0.00
1,100.00	2.65	350.50	1,099.13	38.02	-6.36	-5.52	0.00	0.00	0.00
1,200.00	2.65	350.50	1,199.03	42.58	-7.13	-6.18	0.00	0.00	0.00
1,300.00	2.65	350.50	1,298.92	47.14	-7.89	-6.84	0.00	0.00	0.00
1,400.00	2.65	350.50	1,398.81	51.70	-8.65	-7.50	0.00	0.00	0.00
1,500.00	2.65	350.50	1,498.70	56.26	-9.41	-8.16	0.00	0.00	0.00
1,600.00	2.65	350.50	1,598.60	60.82	-10.18	-8.82	0.00	0.00	0.00
1,700.00	2.65	350.50	1,698.49	65.38	-10.94	-9.49	0.00	0.00	0.00
1,800.00	2.65	350.50	1,798.38	69.94	-11.70	-10.15	0.00	0.00	0.00
1,801.62	2.65	350.50	1,800.00	70.01	-11.72	-10.16	0.00	0.00	0.00
9 5/8"									
1,900.00	2.65	350.50	1,898.28	74.50	-12.47	-10.81	0.00	0.00	0.00
2,000.00	2.65	350.50	1,998.17	79.06	-13.23	-11.47	0.00	0.00	0.00
2,100.00	2.65	350.50	2,098.06	83.62	-13.99	-12.13	0.00	0.00	0.00
2,200.00	2.65	350.50	2,197.96	88.18	-14.76	-12.79	0.00	0.00	0.00
2,300.00	2.65	350.50	2,297.85	92.74	-15.52	-13.45	0.00	0.00	0.00
2,400.00	2.65	350.50	2,397.74	97.30	-16.28	-14.12	0.00	0.00	0.00
2,500.00	2.65	350.50	2,497.63	101.86	-17.05	-14.78	0.00	0.00	0.00
2,600.00	2.65	350.50	2,597.53	106.42	-17.81	-15.44	0.00	0.00	0.00
2,700.00	2.65	350.50	2,697.42	110.98	-18.57	-16.10	0.00	0.00	0.00
2,800.00	2.65	350.50	2,797.31	115.54	-19.33	-16.76	0.00	0.00	0.00
2,900.00	2.65	350.50	2,897.21	120.10	-20.10	-17.42	0.00	0.00	0.00
3,000.00	2.65	350.50	2,997.10	124.66	-20.86	-18.09	0.00	0.00	0.00
3,100.00	2.65	350.50	3,096.99	129.22	-21.62	-18.75	0.00	0.00	0.00
3,200.00	2.65	350.50	3,196.89	133.78	-22.39	-19.41	0.00	0.00	0.00
3,300.00	2.65	350.50	3,296.78	138.34	-23.15	-20.07	0.00	0.00	0.00
3,400.00	2.65	350.50	3,396.67	142.90	-23.91	-20.73	0.00	0.00	0.00
3,500.00	2.65	350.50	3,496.57	147.46	-24.68	-21.39	0.00	0.00	0.00
3,600.00	2.65	350.50	3,596.46	152.02	-25.44	-22.06	0.00	0.00	0.00
3,700.00	2.65	350.50	3,696.35	156.58	-26.20	-22.72	0.00	0.00	0.00
3,800.00	2.65	350.50	3,796.24	161.14	-26.97	-23.38	0.00	0.00	0.00
3,900.00	2.65	350.50	3,896.14	165.70	-27.73	-24.04	0.00	0.00	0.00
4,000.00	2.65	350.50	3,996.03	170.26	-28.49	-24.70	0.00	0.00	0.00
4,100.00	2.65	350.50	4,095.92	174.82	-29.26	-25.36	0.00	0.00	0.00
4,200.00	2.65	350.50	4,195.82	179.38	-30.02	-26.02	0.00	0.00	0.00
4,300.00	2.65	350.50	4,295.71	183.94	-30.78	-26.69	0.00	0.00	0.00
4,400.00	2.65	350.50	4,395.60	188.50	-31.54	-27.35	0.00	0.00	0.00
4,500.00	2.65	350.50	4,495.50	193.06	-32.31	-28.01	0.00	0.00	0.00
4,600.00	2.65	350.50	4,595.39	197.62	-33.07	-28.67	0.00	0.00	0.00
4,700.00	2.65	350.50	4,695.28	202.18	-33.83	-29.33	0.00	0.00	0.00

Hewlett-Packard

Planning Report

Database:	EDM 5000.14 Single User Db	Local Co-ordinate Reference:	Well SANFORD 26N-27C-XR
Company:	SRC ENERGY	TVD Reference:	RKB = 4' @ 4909.00usft (RIG)
Project:	WELD COUNTY (NAD83, TRUE NORTH)	MD Reference:	RKB = 4' @ 4909.00usft (RIG)
Site:	5N-66W-29 SANFORD 21-29 PAD	North Reference:	True
Well:	SANFORD 26N-27C-XR	Survey Calculation Method:	Minimum Curvature
Wellbore:	Wellbore #1		
Design:	Design #1		

Planned Survey									
Measured Depth (usft)	Inclination (°)	Azimuth (°)	Vertical Depth (usft)	+N/-S (usft)	+E/-W (usft)	Vertical Section (usft)	Dogleg Rate (°/100usft)	Build Rate (°/100usft)	Turn Rate (°/100usft)
4,800.00	2.65	350.50	4,795.18	206.74	-34.60	-29.99	0.00	0.00	0.00
4,900.00	2.65	350.50	4,895.07	211.30	-35.36	-30.66	0.00	0.00	0.00
5,000.00	2.65	350.50	4,994.96	215.86	-36.12	-31.32	0.00	0.00	0.00
5,100.00	2.65	350.50	5,094.85	220.42	-36.89	-31.98	0.00	0.00	0.00
5,200.00	2.65	350.50	5,194.75	224.98	-37.65	-32.64	0.00	0.00	0.00
5,300.00	2.65	350.50	5,294.64	229.54	-38.41	-33.30	0.00	0.00	0.00
5,400.00	2.65	350.50	5,394.53	234.10	-39.18	-33.96	0.00	0.00	0.00
5,500.00	2.65	350.50	5,494.43	238.66	-39.94	-34.62	0.00	0.00	0.00
5,600.00	2.65	350.50	5,594.32	243.22	-40.70	-35.29	0.00	0.00	0.00
5,700.00	2.65	350.50	5,694.21	247.78	-41.46	-35.95	0.00	0.00	0.00
5,800.00	2.65	350.50	5,794.11	252.34	-42.23	-36.61	0.00	0.00	0.00
5,900.00	2.65	350.50	5,894.00	256.90	-42.99	-37.27	0.00	0.00	0.00
6,000.00	2.65	350.50	5,993.89	261.46	-43.75	-37.93	0.00	0.00	0.00
6,100.00	2.65	350.50	6,093.79	266.02	-44.52	-38.59	0.00	0.00	0.00
6,200.00	2.65	350.50	6,193.68	270.58	-45.28	-39.26	0.00	0.00	0.00
6,300.00	2.65	350.50	6,293.57	275.14	-46.04	-39.92	0.00	0.00	0.00
6,400.00	2.65	350.50	6,393.46	279.70	-46.81	-40.58	0.00	0.00	0.00
6,500.00	2.65	350.50	6,493.36	284.26	-47.57	-41.24	0.00	0.00	0.00
6,600.00	2.65	350.50	6,593.25	288.82	-48.33	-41.90	0.00	0.00	0.00
6,609.90	2.65	350.50	6,603.14	289.28	-48.41	-41.97	0.00	0.00	0.00
KOP @ 6609.90ft :: DLS = 9°/100'									
6,700.00	8.10	71.40	6,692.89	293.36	-42.73	-36.20	9.00	6.05	89.78
6,800.00	16.86	81.45	6,790.44	297.77	-21.67	-15.04	9.00	8.77	10.05
6,900.00	25.79	84.68	6,883.50	301.96	14.41	21.12	9.00	8.93	3.24
7,000.00	34.75	86.33	6,969.78	305.80	64.62	71.40	9.00	8.96	1.65
7,100.00	43.73	87.37	7,047.15	309.22	127.72	134.56	9.00	8.98	1.04
7,200.00	52.71	88.11	7,113.71	312.12	202.16	209.05	9.00	8.98	0.74
7,300.00	61.70	88.70	7,167.82	314.44	286.10	293.02	9.00	8.99	0.58
7,400.00	70.69	89.19	7,208.14	316.11	377.48	384.42	9.00	8.99	0.49
7,500.00	79.68	89.63	7,233.69	317.10	474.05	480.98	9.00	8.99	0.44
7,600.00	88.67	90.04	7,243.83	317.39	573.44	580.35	9.00	8.99	0.42
7,615.92	90.10	90.11	7,244.00	317.37	589.35	596.26	9.00	8.99	0.41
End Build @ 7615.92ft - Production Zone Top									
7,700.00	90.10	90.11	7,243.86	317.21	673.43	680.32	0.00	0.00	0.00
7,800.00	90.10	90.11	7,243.68	317.02	773.43	780.29	0.00	0.00	0.00
7,900.00	90.10	90.11	7,243.51	316.83	873.43	880.26	0.00	0.00	0.00
8,000.00	90.10	90.11	7,243.33	316.64	973.43	980.23	0.00	0.00	0.00
8,100.00	90.10	90.11	7,243.16	316.45	1,073.43	1,080.20	0.00	0.00	0.00
8,200.00	90.10	90.11	7,242.98	316.26	1,173.43	1,180.17	0.00	0.00	0.00
8,300.00	90.10	90.11	7,242.81	316.07	1,273.43	1,280.14	0.00	0.00	0.00
8,400.00	90.10	90.11	7,242.63	315.88	1,373.43	1,380.11	0.00	0.00	0.00
8,500.00	90.10	90.11	7,242.46	315.70	1,473.43	1,480.08	0.00	0.00	0.00
8,600.00	90.10	90.11	7,242.29	315.51	1,573.43	1,580.05	0.00	0.00	0.00
8,700.00	90.10	90.11	7,242.11	315.32	1,673.43	1,680.02	0.00	0.00	0.00
8,800.00	90.10	90.11	7,241.94	315.13	1,773.43	1,780.00	0.00	0.00	0.00
8,900.00	90.10	90.11	7,241.76	314.94	1,873.43	1,879.97	0.00	0.00	0.00
9,000.00	90.10	90.11	7,241.59	314.75	1,973.43	1,979.94	0.00	0.00	0.00
9,100.00	90.10	90.11	7,241.41	314.56	2,073.43	2,079.91	0.00	0.00	0.00
9,200.00	90.10	90.11	7,241.24	314.37	2,173.43	2,179.88	0.00	0.00	0.00
9,300.00	90.10	90.11	7,241.07	314.18	2,273.43	2,279.85	0.00	0.00	0.00
9,400.00	90.10	90.11	7,240.89	313.99	2,373.43	2,379.82	0.00	0.00	0.00
9,500.00	90.10	90.11	7,240.72	313.81	2,473.43	2,479.79	0.00	0.00	0.00
9,600.00	90.10	90.11	7,240.54	313.62	2,573.43	2,579.76	0.00	0.00	0.00
9,700.00	90.10	90.11	7,240.37	313.43	2,673.43	2,679.73	0.00	0.00	0.00

Hewlett-Packard

Planning Report

Database:	EDM 5000.14 Single User Db	Local Co-ordinate Reference:	Well SANFORD 26N-27C-XR
Company:	SRC ENERGY	TVD Reference:	RKB = 4' @ 4909.00usft (RIG)
Project:	WELD COUNTY (NAD83, TRUE NORTH)	MD Reference:	RKB = 4' @ 4909.00usft (RIG)
Site:	5N-66W-29 SANFORD 21-29 PAD	North Reference:	True
Well:	SANFORD 26N-27C-XR	Survey Calculation Method:	Minimum Curvature
Wellbore:	Wellbore #1		
Design:	Design #1		

Planned Survey										
Measured Depth (usft)	Inclination (°)	Azimuth (°)	Vertical Depth (usft)	+N/-S (usft)	+E/-W (usft)	Vertical Section (usft)	Dogleg Rate (°/100usft)	Build Rate (°/100usft)	Turn Rate (°/100usft)	
9,800.00	90.10	90.11	7,240.19	313.24	2,773.43	2,779.70	0.00	0.00	0.00	
9,900.00	90.10	90.11	7,240.02	313.05	2,873.43	2,879.67	0.00	0.00	0.00	
10,000.00	90.10	90.11	7,239.84	312.86	2,973.43	2,979.64	0.00	0.00	0.00	
10,100.00	90.10	90.11	7,239.67	312.67	3,073.43	3,079.62	0.00	0.00	0.00	
10,200.00	90.10	90.11	7,239.50	312.48	3,173.43	3,179.59	0.00	0.00	0.00	
10,300.00	90.10	90.11	7,239.32	312.29	3,273.43	3,279.56	0.00	0.00	0.00	
10,400.00	90.10	90.11	7,239.15	312.10	3,373.42	3,379.53	0.00	0.00	0.00	
10,500.00	90.10	90.11	7,238.97	311.91	3,473.42	3,479.50	0.00	0.00	0.00	
10,600.00	90.10	90.11	7,238.80	311.73	3,573.42	3,579.47	0.00	0.00	0.00	
10,700.00	90.10	90.11	7,238.62	311.54	3,673.42	3,679.44	0.00	0.00	0.00	
10,800.00	90.10	90.11	7,238.45	311.35	3,773.42	3,779.41	0.00	0.00	0.00	
10,900.00	90.10	90.11	7,238.27	311.16	3,873.42	3,879.38	0.00	0.00	0.00	
11,000.00	90.10	90.11	7,238.10	310.97	3,973.42	3,979.35	0.00	0.00	0.00	
11,100.00	90.10	90.11	7,237.93	310.78	4,073.42	4,079.32	0.00	0.00	0.00	
11,200.00	90.10	90.11	7,237.75	310.59	4,173.42	4,179.29	0.00	0.00	0.00	
11,300.00	90.10	90.11	7,237.58	310.40	4,273.42	4,279.26	0.00	0.00	0.00	
11,400.00	90.10	90.11	7,237.40	310.21	4,373.42	4,379.24	0.00	0.00	0.00	
11,500.00	90.10	90.11	7,237.23	310.02	4,473.42	4,479.21	0.00	0.00	0.00	
11,600.00	90.10	90.11	7,237.05	309.84	4,573.42	4,579.18	0.00	0.00	0.00	
11,700.00	90.10	90.11	7,236.88	309.65	4,673.42	4,679.15	0.00	0.00	0.00	
11,800.00	90.10	90.11	7,236.70	309.46	4,773.42	4,779.12	0.00	0.00	0.00	
11,900.00	90.10	90.11	7,236.53	309.27	4,873.42	4,879.09	0.00	0.00	0.00	
12,000.00	90.10	90.11	7,236.36	309.08	4,973.42	4,979.06	0.00	0.00	0.00	
12,100.00	90.10	90.11	7,236.18	308.89	5,073.42	5,079.03	0.00	0.00	0.00	
12,200.00	90.10	90.11	7,236.01	308.70	5,173.42	5,179.00	0.00	0.00	0.00	
12,300.00	90.10	90.11	7,235.83	308.51	5,273.42	5,278.97	0.00	0.00	0.00	
12,400.00	90.10	90.11	7,235.66	308.32	5,373.42	5,378.94	0.00	0.00	0.00	
12,500.00	90.10	90.11	7,235.48	308.13	5,473.42	5,478.91	0.00	0.00	0.00	
12,600.00	90.10	90.11	7,235.31	307.95	5,573.42	5,578.88	0.00	0.00	0.00	
12,700.00	90.10	90.11	7,235.14	307.76	5,673.42	5,678.86	0.00	0.00	0.00	
12,800.00	90.10	90.11	7,234.96	307.57	5,773.42	5,778.83	0.00	0.00	0.00	
12,900.00	90.10	90.11	7,234.79	307.38	5,873.42	5,878.80	0.00	0.00	0.00	
13,000.00	90.10	90.11	7,234.61	307.19	5,973.42	5,978.77	0.00	0.00	0.00	
13,100.00	90.10	90.11	7,234.44	307.00	6,073.42	6,078.74	0.00	0.00	0.00	
13,200.00	90.10	90.11	7,234.26	306.81	6,173.42	6,178.71	0.00	0.00	0.00	
13,300.00	90.10	90.11	7,234.09	306.62	6,273.42	6,278.68	0.00	0.00	0.00	
13,400.00	90.10	90.11	7,233.91	306.43	6,373.42	6,378.65	0.00	0.00	0.00	
13,500.00	90.10	90.11	7,233.74	306.24	6,473.41	6,478.62	0.00	0.00	0.00	
13,600.00	90.10	90.11	7,233.57	306.05	6,573.41	6,578.59	0.00	0.00	0.00	
13,700.00	90.10	90.11	7,233.39	305.87	6,673.41	6,678.56	0.00	0.00	0.00	
13,800.00	90.10	90.11	7,233.22	305.68	6,773.41	6,778.53	0.00	0.00	0.00	
13,900.00	90.10	90.11	7,233.04	305.49	6,873.41	6,878.50	0.00	0.00	0.00	
14,000.00	90.10	90.11	7,232.87	305.30	6,973.41	6,978.48	0.00	0.00	0.00	
14,100.00	90.10	90.11	7,232.69	305.11	7,073.41	7,078.45	0.00	0.00	0.00	
14,200.00	90.10	90.11	7,232.52	304.92	7,173.41	7,178.42	0.00	0.00	0.00	
14,300.00	90.10	90.11	7,232.34	304.73	7,273.41	7,278.39	0.00	0.00	0.00	
14,400.00	90.10	90.11	7,232.17	304.54	7,373.41	7,378.36	0.00	0.00	0.00	
14,500.00	90.10	90.11	7,232.00	304.35	7,473.41	7,478.33	0.00	0.00	0.00	
14,600.00	90.10	90.11	7,231.82	304.16	7,573.41	7,578.30	0.00	0.00	0.00	
14,700.00	90.10	90.11	7,231.65	303.98	7,673.41	7,678.27	0.00	0.00	0.00	
14,800.00	90.10	90.11	7,231.47	303.79	7,773.41	7,778.24	0.00	0.00	0.00	
14,900.00	90.10	90.11	7,231.30	303.60	7,873.41	7,878.21	0.00	0.00	0.00	
15,000.00	90.10	90.11	7,231.12	303.41	7,973.41	7,978.18	0.00	0.00	0.00	
15,100.00	90.10	90.11	7,230.95	303.22	8,073.41	8,078.15	0.00	0.00	0.00	

Planning Report

Planned Survey										
Measured Depth (usft)	Inclination (°)	Azimuth (°)	Vertical Depth (usft)	+N/-S (usft)	+E/-W (usft)	Vertical Section (usft)	Dogleg Rate (°/100usft)	Build Rate (°/100usft)	Turn Rate (°/100usft)	
15,200.00	90.10	90.11	7,230.77	303.03	8,173.41	8,178.12	0.00	0.00	0.00	
15,300.00	90.10	90.11	7,230.60	302.84	8,273.41	8,278.10	0.00	0.00	0.00	
15,400.00	90.10	90.11	7,230.43	302.65	8,373.41	8,378.07	0.00	0.00	0.00	
15,500.00	90.10	90.11	7,230.25	302.46	8,473.41	8,478.04	0.00	0.00	0.00	
15,600.00	90.10	90.11	7,230.08	302.27	8,573.41	8,578.01	0.00	0.00	0.00	
15,700.00	90.10	90.11	7,229.90	302.09	8,673.41	8,677.98	0.00	0.00	0.00	
15,800.00	90.10	90.11	7,229.73	301.90	8,773.41	8,777.95	0.00	0.00	0.00	
15,900.00	90.10	90.11	7,229.55	301.71	8,873.41	8,877.92	0.00	0.00	0.00	
16,000.00	90.10	90.11	7,229.38	301.52	8,973.41	8,977.89	0.00	0.00	0.00	
16,100.00	90.10	90.11	7,229.21	301.33	9,073.41	9,077.86	0.00	0.00	0.00	
16,200.00	90.10	90.11	7,229.03	301.14	9,173.41	9,177.83	0.00	0.00	0.00	
16,300.00	90.10	90.11	7,228.86	300.95	9,273.41	9,277.80	0.00	0.00	0.00	
16,400.00	90.10	90.11	7,228.68	300.76	9,373.41	9,377.77	0.00	0.00	0.00	
16,500.00	90.10	90.11	7,228.51	300.57	9,473.40	9,477.74	0.00	0.00	0.00	
16,600.00	90.10	90.11	7,228.33	300.38	9,573.40	9,577.72	0.00	0.00	0.00	
16,700.00	90.10	90.11	7,228.16	300.19	9,673.40	9,677.69	0.00	0.00	0.00	
16,800.00	90.10	90.11	7,227.98	300.01	9,773.40	9,777.66	0.00	0.00	0.00	
16,900.00	90.10	90.11	7,227.81	299.82	9,873.40	9,877.63	0.00	0.00	0.00	
17,000.00	90.10	90.11	7,227.64	299.63	9,973.40	9,977.60	0.00	0.00	0.00	
17,100.00	90.10	90.11	7,227.46	299.44	10,073.40	10,077.57	0.00	0.00	0.00	
17,200.00	90.10	90.11	7,227.29	299.25	10,173.40	10,177.54	0.00	0.00	0.00	
17,300.00	90.10	90.11	7,227.11	299.06	10,273.40	10,277.51	0.00	0.00	0.00	
17,400.00	90.10	90.11	7,226.94	298.87	10,373.40	10,377.48	0.00	0.00	0.00	
17,500.00	90.10	90.11	7,226.76	298.68	10,473.40	10,477.45	0.00	0.00	0.00	
17,600.00	90.10	90.11	7,226.59	298.49	10,573.40	10,577.42	0.00	0.00	0.00	
17,700.00	90.10	90.11	7,226.41	298.30	10,673.40	10,677.39	0.00	0.00	0.00	
17,800.00	90.10	90.11	7,226.24	298.12	10,773.40	10,777.37	0.00	0.00	0.00	
17,900.00	90.10	90.11	7,226.07	297.93	10,873.40	10,877.34	0.00	0.00	0.00	
18,000.00	90.10	90.11	7,225.89	297.74	10,973.40	10,977.31	0.00	0.00	0.00	
18,100.00	90.10	90.11	7,225.72	297.55	11,073.40	11,077.28	0.00	0.00	0.00	
18,200.00	90.10	90.11	7,225.54	297.36	11,173.40	11,177.25	0.00	0.00	0.00	
18,300.00	90.10	90.11	7,225.37	297.17	11,273.40	11,277.22	0.00	0.00	0.00	
18,400.00	90.10	90.11	7,225.19	296.98	11,373.40	11,377.19	0.00	0.00	0.00	
18,500.00	90.10	90.11	7,225.02	296.79	11,473.40	11,477.16	0.00	0.00	0.00	
18,600.00	90.10	90.11	7,224.85	296.60	11,573.40	11,577.13	0.00	0.00	0.00	
18,700.00	90.10	90.11	7,224.67	296.41	11,673.40	11,677.10	0.00	0.00	0.00	
18,800.00	90.10	90.11	7,224.50	296.23	11,773.40	11,777.07	0.00	0.00	0.00	
18,900.00	90.10	90.11	7,224.32	296.04	11,873.40	11,877.04	0.00	0.00	0.00	
19,000.00	90.10	90.11	7,224.15	295.85	11,973.40	11,977.01	0.00	0.00	0.00	
19,100.00	90.10	90.11	7,223.97	295.66	12,073.40	12,076.99	0.00	0.00	0.00	
19,200.00	90.10	90.11	7,223.80	295.47	12,173.40	12,176.96	0.00	0.00	0.00	
19,300.00	90.10	90.11	7,223.62	295.28	12,273.40	12,276.93	0.00	0.00	0.00	
19,400.00	90.10	90.11	7,223.45	295.09	12,373.40	12,376.90	0.00	0.00	0.00	
19,500.00	90.10	90.11	7,223.28	294.90	12,473.40	12,476.87	0.00	0.00	0.00	
19,600.00	90.10	90.11	7,223.10	294.71	12,573.39	12,576.84	0.00	0.00	0.00	
19,700.00	90.10	90.11	7,222.93	294.52	12,673.39	12,676.81	0.00	0.00	0.00	
19,800.00	90.10	90.11	7,222.75	294.33	12,773.39	12,776.78	0.00	0.00	0.00	
19,900.00	90.10	90.11	7,222.58	294.15	12,873.39	12,876.75	0.00	0.00	0.00	
20,000.00	90.10	90.11	7,222.40	293.96	12,973.39	12,976.72	0.00	0.00	0.00	
20,100.00	90.10	90.11	7,222.23	293.77	13,073.39	13,076.69	0.00	0.00	0.00	
20,200.00	90.10	90.11	7,222.05	293.58	13,173.39	13,176.66	0.00	0.00	0.00	
20,231.13	90.10	90.11	7,222.00	293.52	13,204.52	13,207.78	0.00	0.00	0.00	
TD Well @ 20231.13ft										

Hewlett-Packard

Planning Report

Database:	EDM 5000.14 Single User Db	Local Co-ordinate Reference:	Well SANFORD 26N-27C-XR
Company:	SRC ENERGY	TVD Reference:	RKB = 4' @ 4909.00usft (RIG)
Project:	WELD COUNTY (NAD83, TRUE NORTH)	MD Reference:	RKB = 4' @ 4909.00usft (RIG)
Site:	5N-66W-29 SANFORD 21-29 PAD	North Reference:	True
Well:	SANFORD 26N-27C-XR	Survey Calculation Method:	Minimum Curvature
Wellbore:	Wellbore #1		
Design:	Design #1		

Casing Points					
Measured Depth (usft)	Vertical Depth (usft)	Name		Casing Diameter (")	Hole Diameter (")
1,801.62	1,800.00	9 5/8"		9-5/8	13-1/2
7,615.92	7,244.00	Production Zone Top		5-1/2	8-1/2

Plan Annotations					
Measured Depth (usft)	Vertical Depth (usft)	Local Coordinates		Comment	
		+N/-S (usft)	+E/-W (usft)		
200.00	200.00	0.00	0.00	Begin Nudge @ 200.00ft	
332.50	332.45	3.02	-0.51	Hold Tangent @ 332.50ft	
6,609.90	6,603.14	289.28	-48.41	KOP @ 6609.90ft :: DLS = 9°/100'	
7,615.92	7,244.00	317.37	589.36	End Build @ 7615.92ft	
20,231.13	7,222.00	293.52	13,204.52	TD Well @ 20231.13ft	