


<div><div><div>BAKER HUGHES</div><div>a GE company</div></div><div></div></div>				LWD MEMORY LOG			
Scale: 1:240 TVD				Company: Noble Energy			
Depth Reference:				Well: Dorothy State LG16-757			
Driller's Depth				Field: Weld County			
				County: Weld			
				State: Colorado			
Status: Final Print		Surface Location:		Other Services:			
API No: 05-123-47612		Latitude:		040° 40' 59.520" N			
Job ID: 109454523		Longitude:		103° 59' 08.340" W			
Permanent Datum (P.D.): Ground Level		Elevation:		4855.00 ft		Elev. KB: N/A	
Log Measured From: Rig Floor		Above P.D.		30.00 ft		Elev. DF: 4885.00 ft	
						Elev. GL: 4855.00 ft	
Dates				Magnetic Field Reference			
Date From: 2018-11-16		Top: (ft) 1944.00		Azi Reference North: Grid		Dip Angle: (deg) 66.98	
Date To: 2018-11-19		Bottom: (ft) 16692.00		Total Magnetic Field Strength: (nT)		52343	
Spud Date: 2018-11-14				Mag to Reference North Correction: (deg)		6.93	
Borehole Record				Casing Record			
Hole Size (in)	From (ft)	To (ft)	Size (in)	Weight (lb/ft)	From (ft)	To (ft)	
13.500	30.00	1944.00	9.625	36.00	30.00	1934.00	
8.500	1944.00	16692.00					
Mud Record				Deviation Record			
Type	From (ft)	To (ft)	Hole Size (in)	Interval (ft)	Inc   Az (Start)	Inc   Az (End)	
Oil Based Mud	1944.00	16692.00	8.500	14748.00	0.35   299.23	90.52   177.53	
Acquisition System				Other			
Baker Hughes Cadence		RT 4.2		Rig: H&P 321		Contractor: Helmerich & Payne Drilling Co	
DeliverableGen		1.0.8107.2		Contractor: RMD		Unit: D&E	

© 2018 Baker Hughes, a GE company, LLC – All rights reserved. Baker Hughes, a GE company, LLC and its affiliates (“BHGE”) provides this information on an “as is” basis for general information purposes and believes it to be accurate as of the date of publication. BHGE does not make any representation as to the accuracy or completeness of the information and makes no warranties of any kind, specific, implied or oral, to the fullest extent permissible by law, including those of merchantability and fitness for a particular purpose or use. BHGE hereby disclaims any and all liability for any direct, indirect, consequential or special damages, claims for lost profits, or third party claims arising from the use of the information, whether a claim is asserted in contract, tort, or otherwise. The BHGE logo is a trademark of Baker Hughes, a GE company, LLC. GE and the GE monogram are trademarks of General Electric Company used under trademark license.

Log Run Summary												
Run No	Bit Run No.	Bit Size  (in)	Bit Type	Bit Gauge Length (in)	Assembly Type	Logged Interval		Bit Depth Interval		Date / Time		Circ. Hours  (h)
						Top	Bottom	From	To	Start Logging	End Logging	
						(ft)	(ft)	(ft)	(ft)			
1	1	8.500	PDC	2.00	AutoTrak Curve	1944.00	16678.00	1944.00	16692.00	2018-11-16 06:14	2018-11-18 23:22	57.46

Crew								
Name			Arrive Wellsite	Depart Wellsite	Name			Arrive Wellsite
Tien Bui			2018-11-14	2018-11-20				

Mud Properties Record												
Date / Time		Run No.	Measured Depth (ft)	Mud Type	Density (ppg)	Viscosity (cP)	pH	Fluid Loss (cm3)	Oil / Water	Source	Total Chlorides (ppm)	K+ (%)
2018-11-15 10:22		1	1944.00	Oil Based Mud	9.2	12	N/A	24.8	81.1/18.9	Active Pit	24000	0.00
2018-11-17 09:39		1	8873.00	Oil Based Mud	9.3	11	N/A	17.6	83.3/16.7	Active Pit	25000	0.00
2018-11-18 05:32		1	12760.00	Oil Based Mud	9.4	12	N/A	18.0	83.6/16.4	Active Pit	22500	0.00

Equipment and Service Data							
Run No.	Tool			Serial Number	Measurement		Sensor Offset (ft)
1	ATC_SU			14547138	Near Bit VSS		5.93
1	ATC_SU			14547138	Near Bit Inclination		5.93
1	ATC_MWD			14307439	Gamma (single)		2.77
1	ATC_MWD			14307439	Directional (mag)		12.27

Service and Tool Mnemonics		
Mnemonic	Name	Description
ATC_SU	ATC_SU	Auto Trak Curve Steering Unit
ATC_MWD	ATC_MWD	Auto Trak Curve MWD
ATC_LCPM	ATC_LCPM	Auto Trak Curve LCPM

Comments	
1	Depth measurements were obtained from a depth control system not supplied or operated by Baker Hughes. Due to lack of control by Baker Hughes logging engineers, depth calibrations and measurements could not be independently verified.
2	Baker Hughes LWD Run 1 utilized 6 ¾ inch NaviGamma service (Gamma Ray and Directional) behind an 8 1/2 inch bit and rotary steerable assembly from 1944 to 16692 feet MD (1944 to 6074 feet TVD).
3	The Gamma Ray Apparent (GRAM) data is presented 0 to 300 API, per the customer's request.

Remarks			
Number	Measured Depth (ft)	Hole Section (in)	Run No.
Remark			

Curve Mnemonics		
Presented Curves		Description
ROPA		Depth Averaged ROP 3 ft Average
WOBA		Weight On Bit, Average 1 ft Average
GRAM		Gamma Ray - Apparent - Memory 0.5 ft Average
TCDM		Directional Real-Time Survey Temperature

		Company	Noble Energy
--	--	---------	--------------



Well

Interval

Created

Dorothy State LG16-757

Date From: 2018-11-16 04:13

Date To: 2018-11-19 15:16

2018-11-19 15:28:17

Top: 1944.00 ft

Bottom: 16692.00 ft

Gamma Ray - Apparent 0.5 ft Average GRAM  
0 300

API

TVD 1:240 feet

Depth Averaged ROP 3 ft Average ROPA  
1000 0

ft/h

Weight On Bit, Average 1 ft Average WOBA  
0 50

klb

Downhole Temperature TCDM

0

300

degF

9 5/8" Casing

2000

2100

2200

ROPA

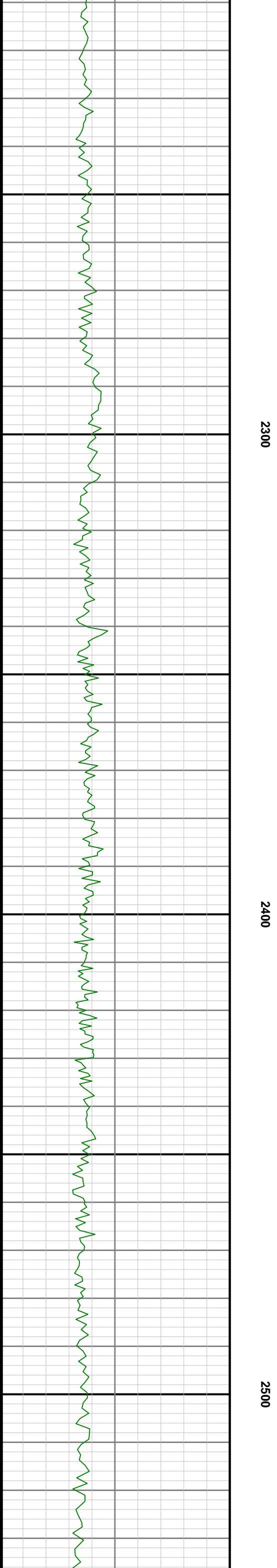
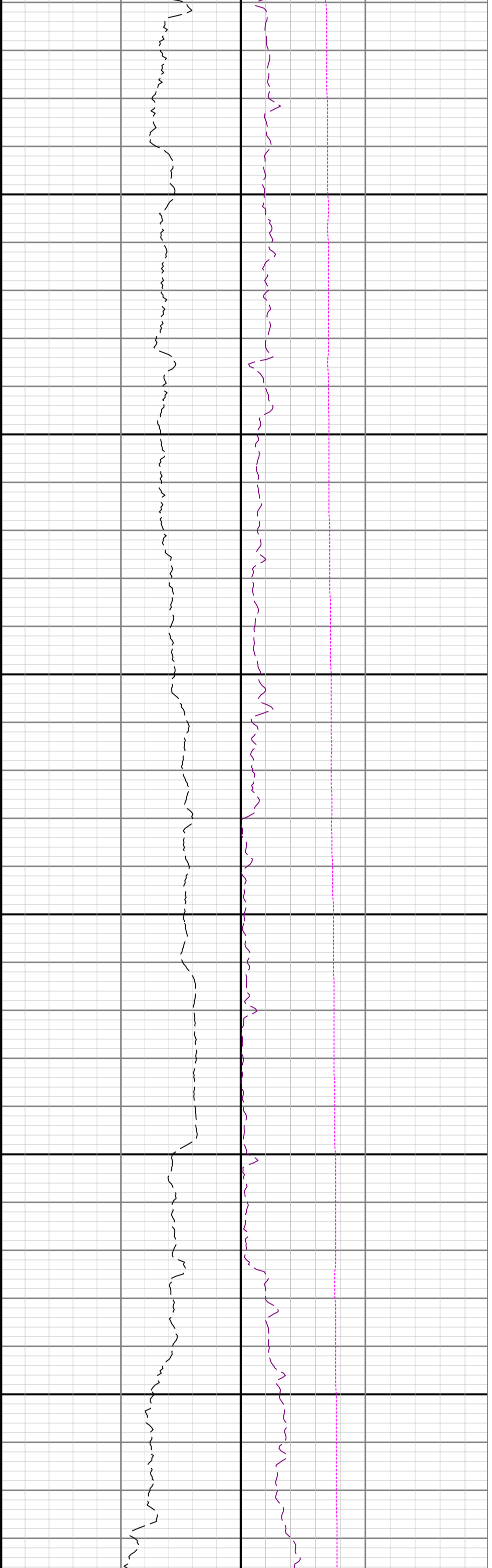
WOBA

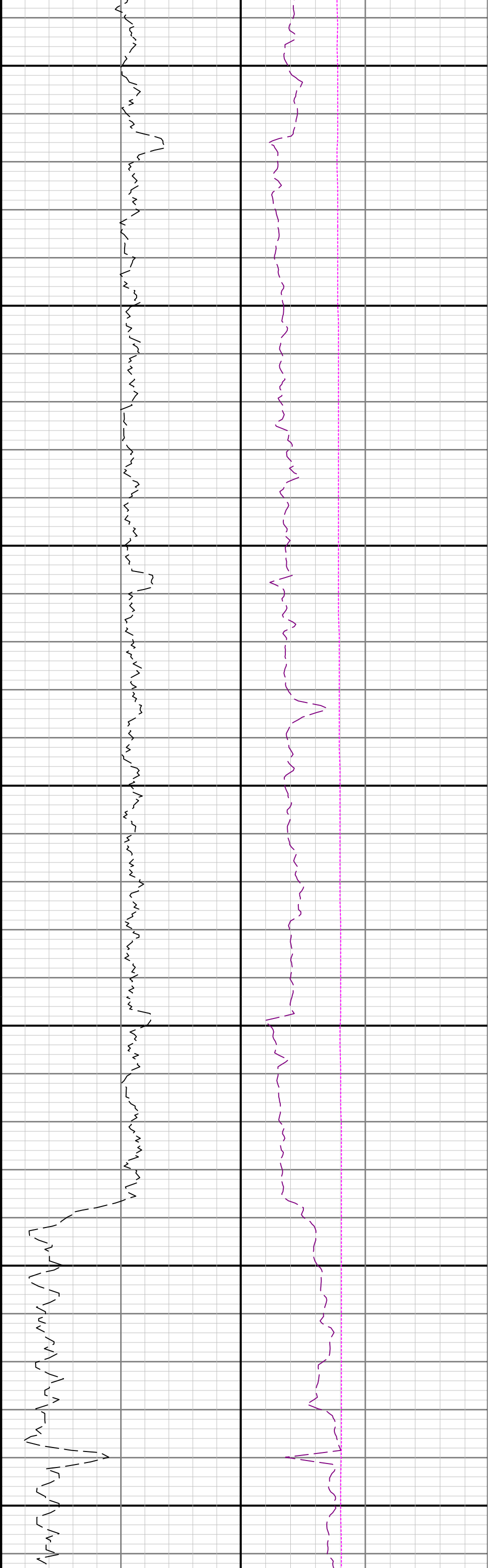
TCDM



GRAM



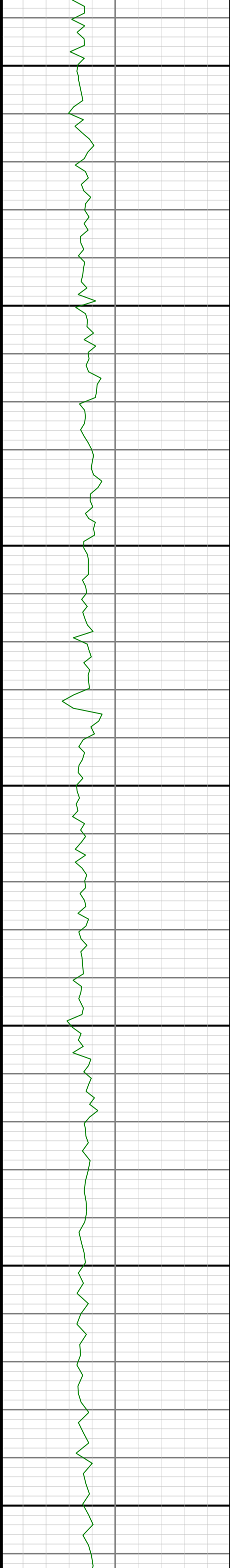


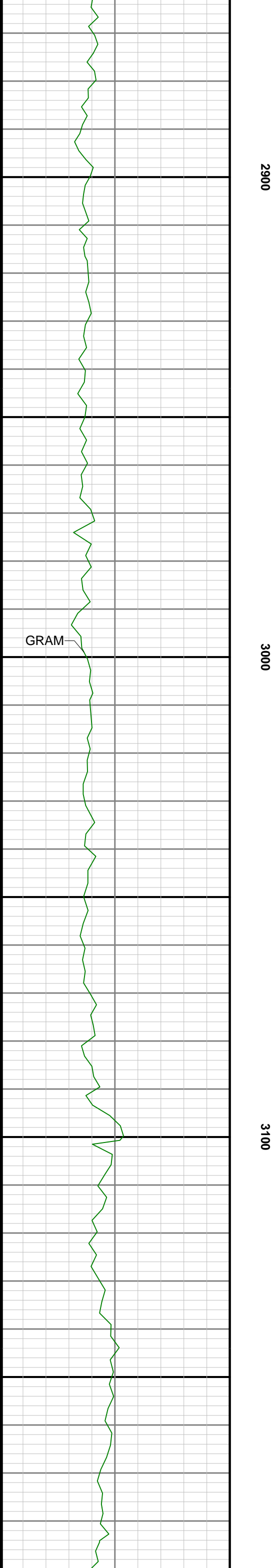
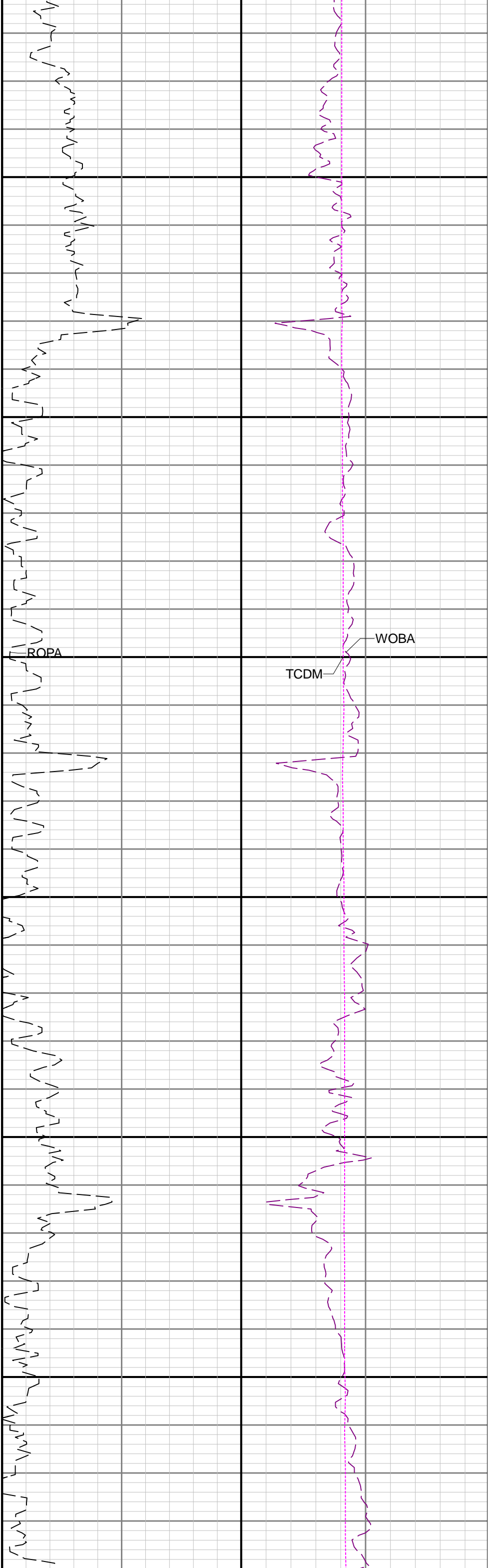


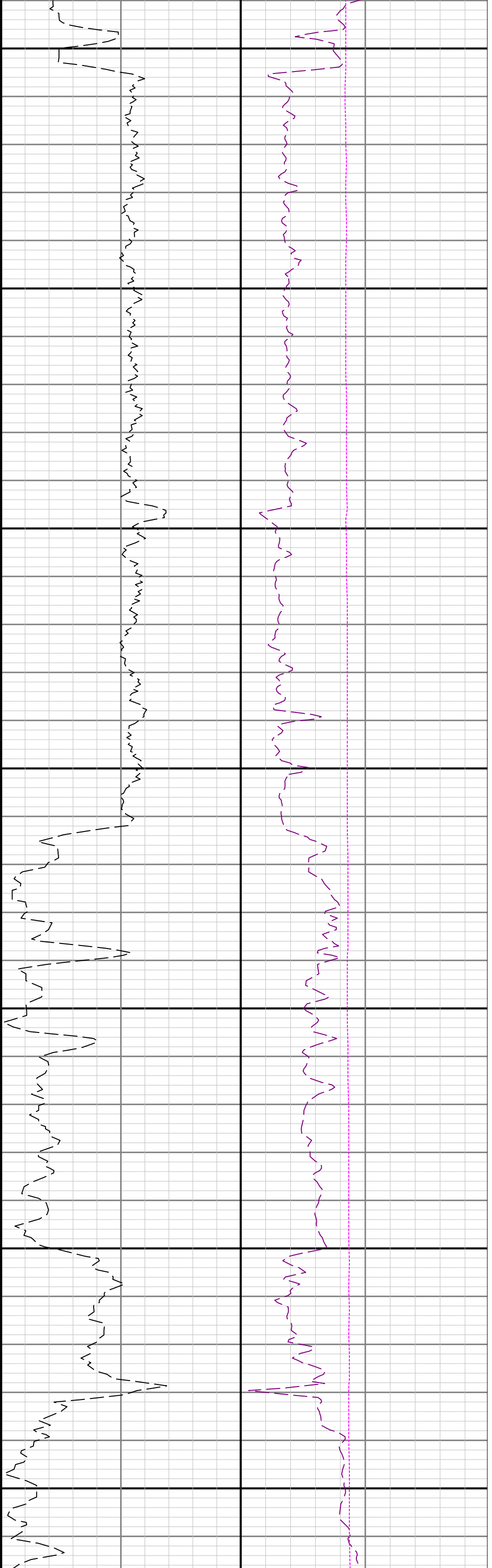
2600

2700

2800





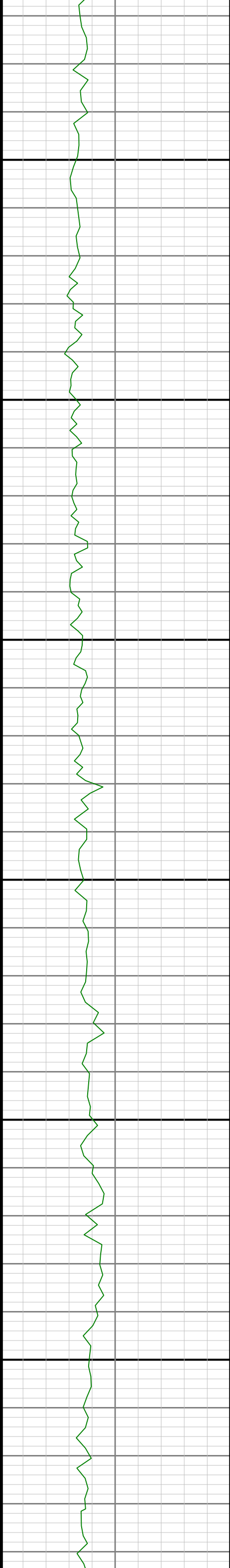


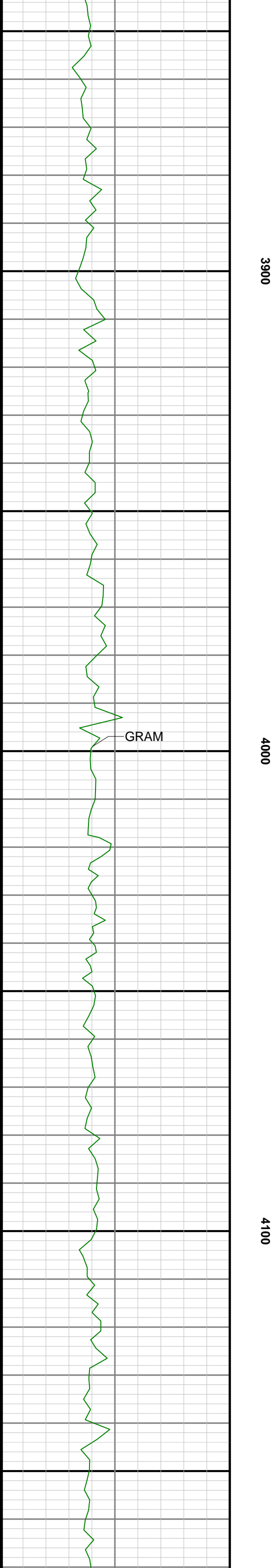
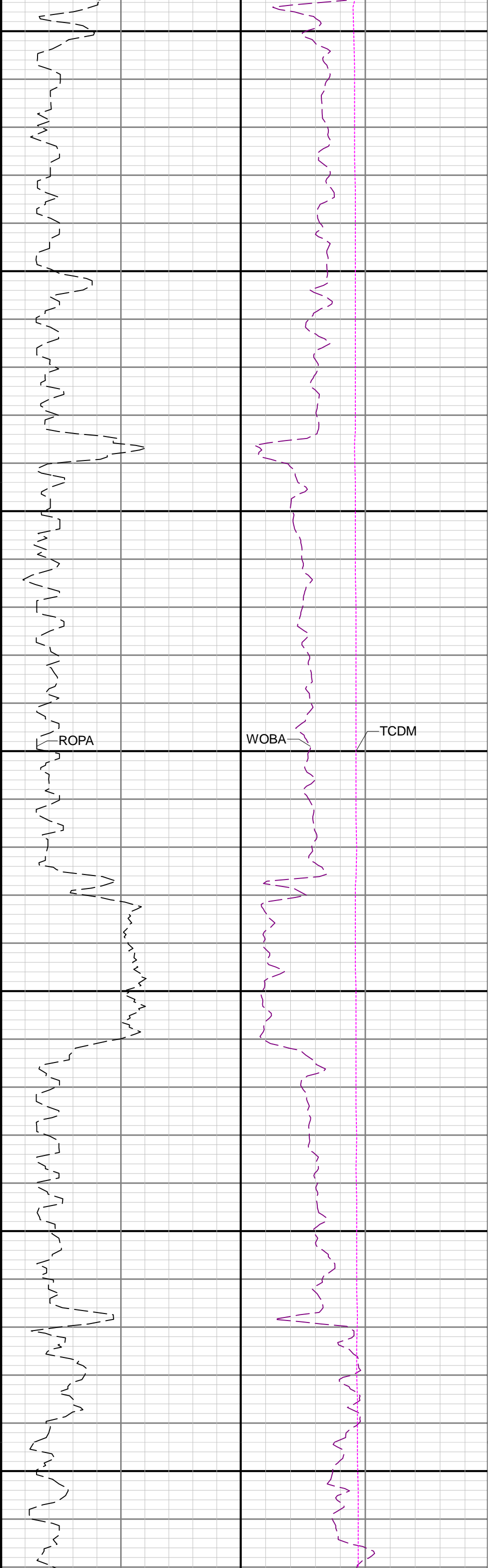


3600

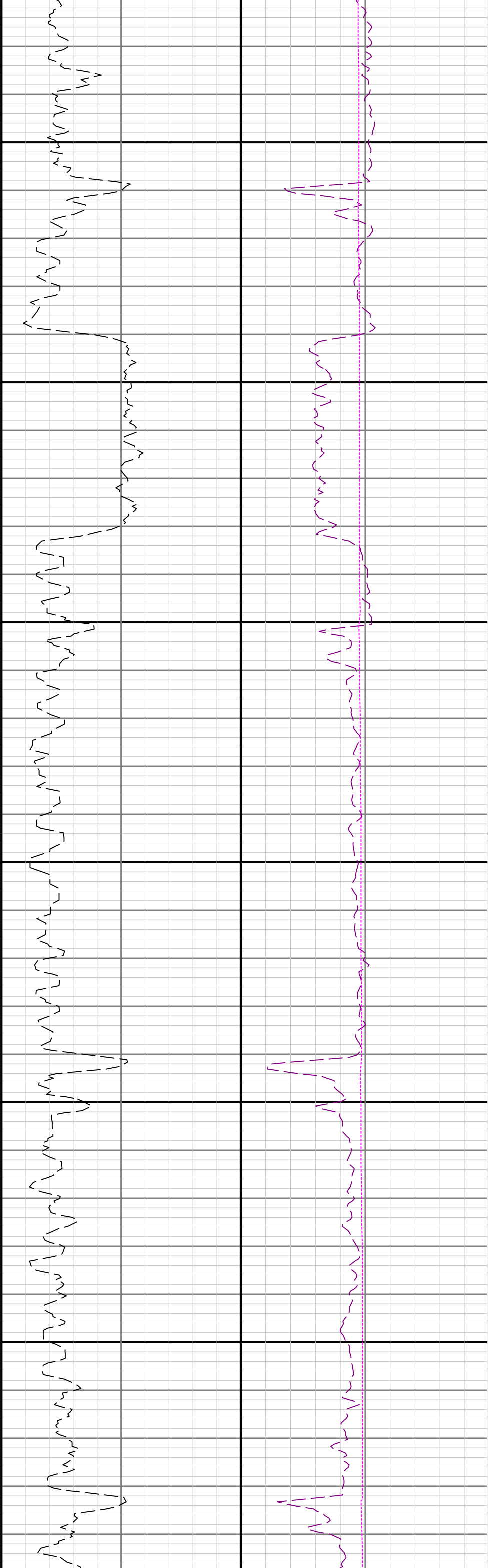
3700

3800





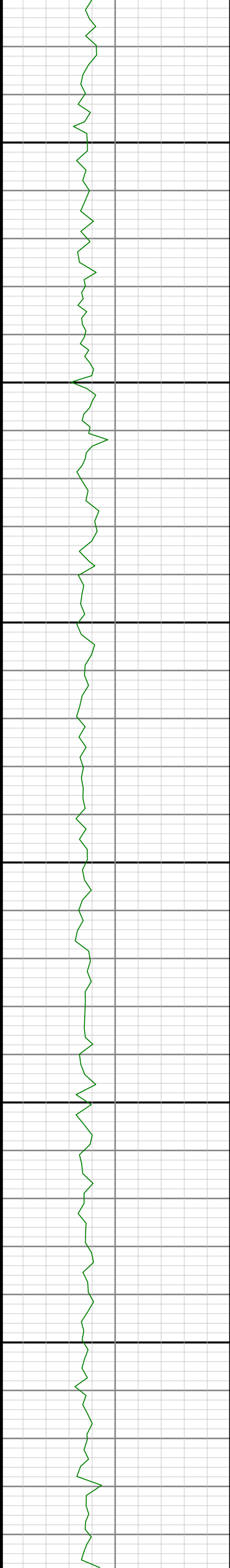


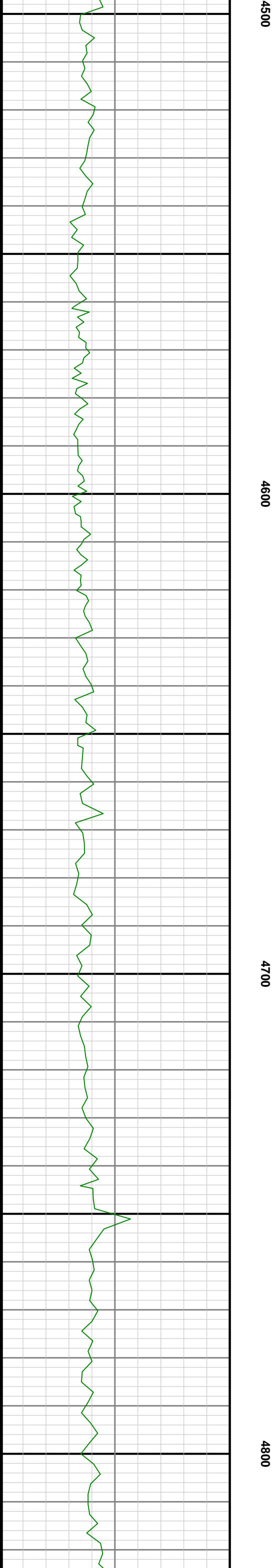
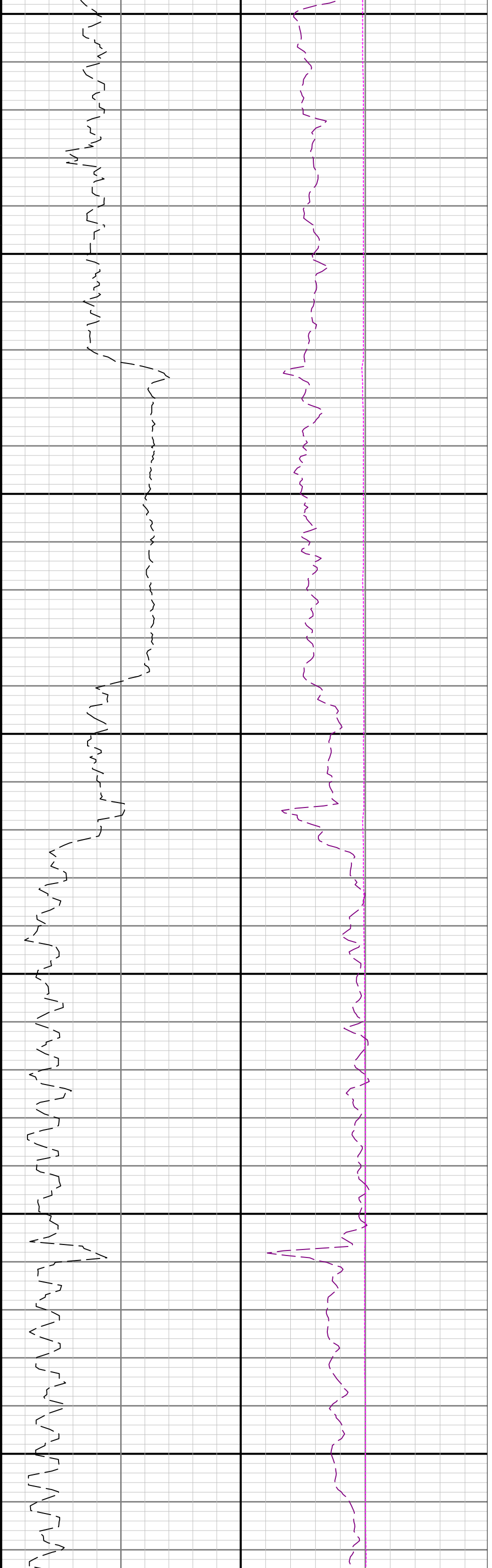


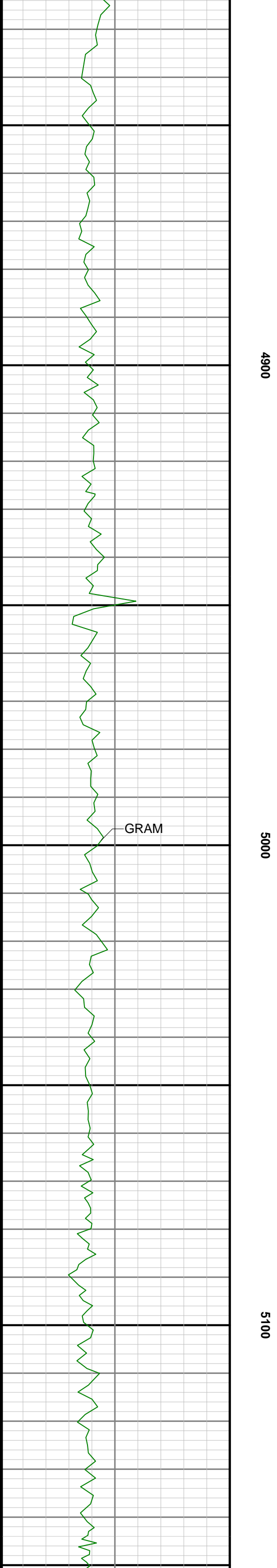
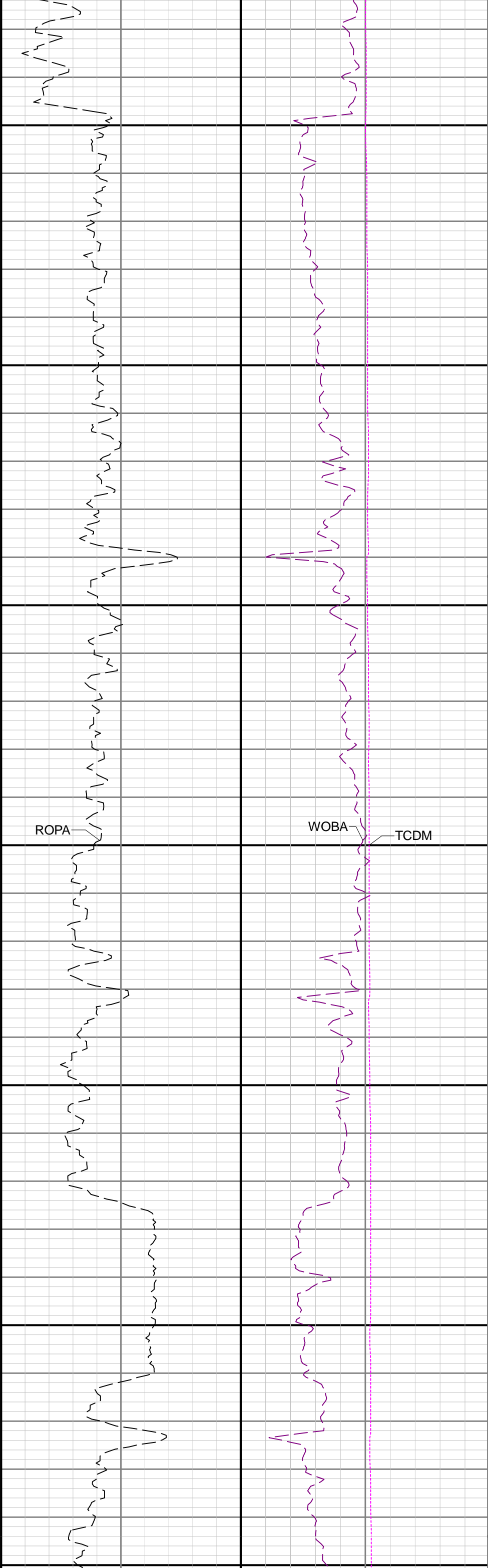
4200

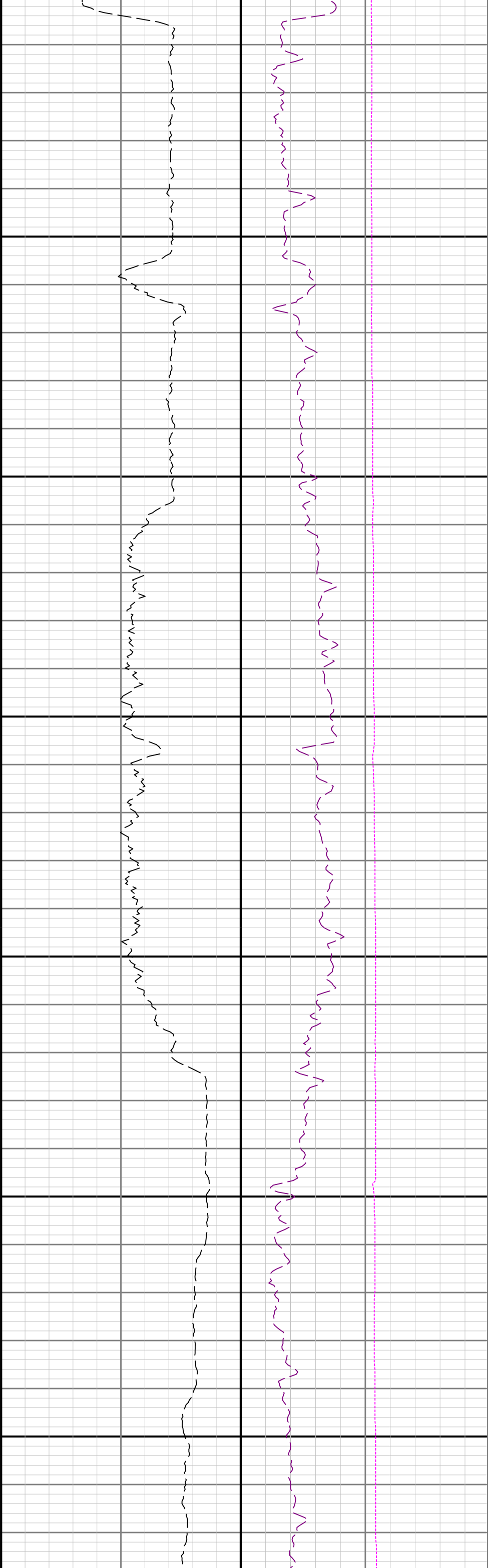
4300

4400







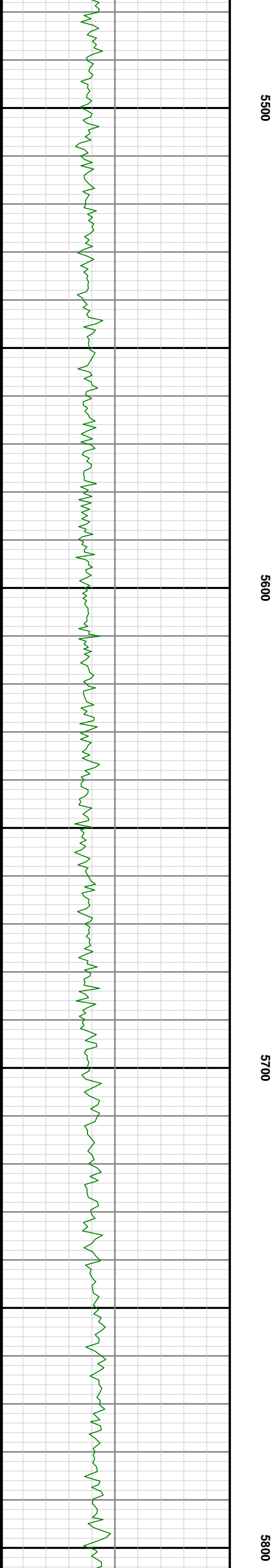
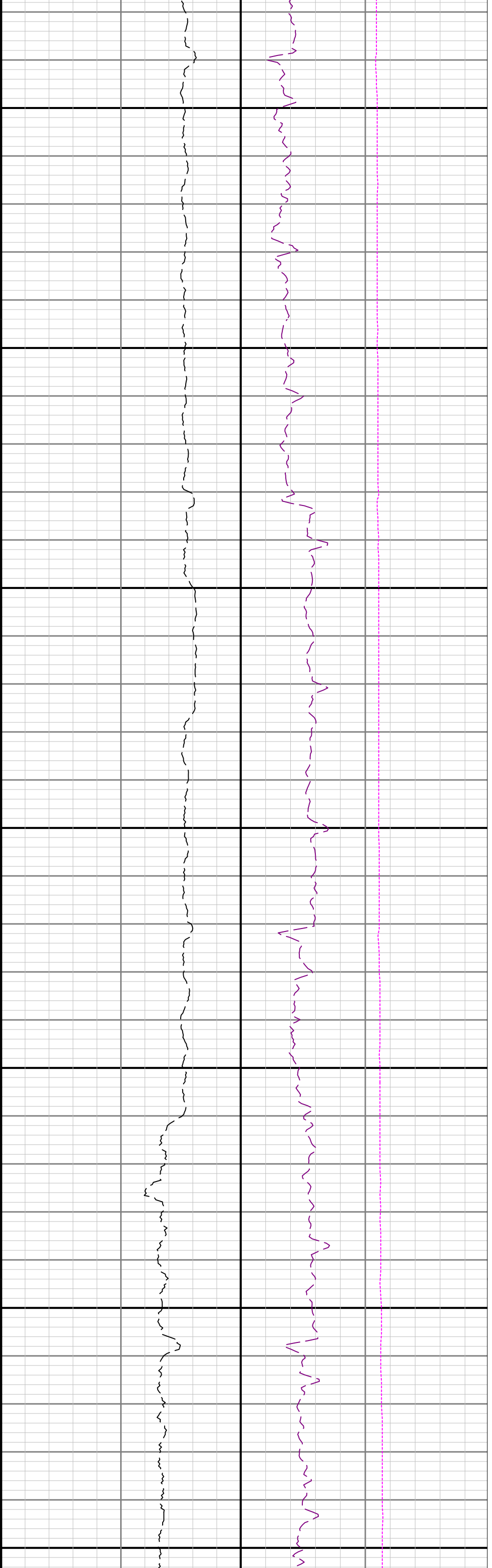


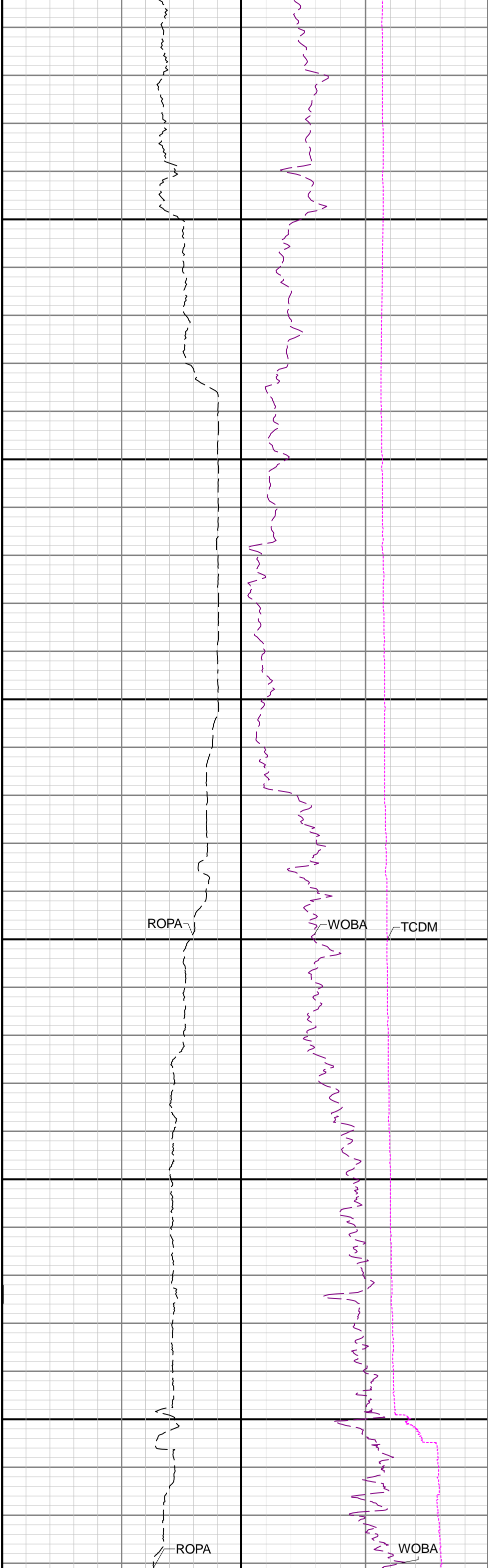
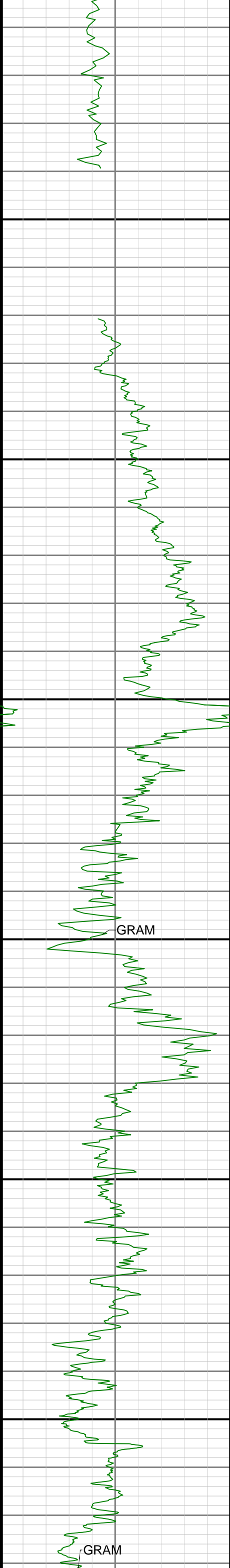
5200

5300

5400







### Directional Survey Summary

Directional Survey Summary			
Latitude:	040° 40' 59.520" N	Longitude:	103° 59' 08.340" W
North Reference:	Grid	Drill Depth Zero:	Rig Floor
Vertical Datum is:	Ground Level	Vertical Datum to DDZ: (ft)	30.00
Vertical Section North: (ft)	0.00	Vertical Section East: (ft)	0.00
Vertical Section Azimuth: (deg)	175.52		
Grid Convergence: (deg)	-0.98	Magnetic Declination: (deg)	7.91
Total Correction: (deg)	6.93	TVD Calculation Method:	Minimum Curvature
Magnetic Correction:	On	Local Magnetic Field: (nT)	52343

Local Magnetic Dip Angle: (deg)					66.98		Local Gravity Field: (m/s2)			9.801			
Tie-In / Projection	Measured Depth (ft)	Inclination (deg)	Azimuth (deg)	Temperature (degF)	North (ft)	East (ft)	True Vertical Depth (ft)	TVD Subsea (ft)	Vertical Section (ft)	Course Length (ft)	Dog Leg Severity (deg/100ft)	Build Rate (deg/100ft)	Turn Rate (deg/100ft)
Tie-In	0.00	0.00	0.00	N/A	0.00	0.00	0.00	-4885.00	0.00	0.00	0.00	0.00	0.00
	82.90	0.22	198.44	N/A	-0.15	-0.05	82.90	-4802.10	0.15	82.90	0.27	0.27	-194.89
	178.40	0.61	203.62	N/A	-0.79	-0.31	178.40	-4706.60	0.76	95.50	0.41	0.41	5.42
	269.70	0.43	157.11	N/A	-1.55	-0.37	269.69	-4615.31	1.52	91.30	0.48	-0.20	-50.94
	364.20	0.42	90.00	N/A	-1.88	0.11	364.19	-4520.81	1.88	94.50	0.50	-0.01	-71.02
	458.60	0.34	129.05	N/A	-2.05	0.67	458.59	-4426.41	2.10	94.40	0.28	-0.08	41.37
	553.30	0.43	135.70	N/A	-2.49	1.14	553.29	-4331.71	2.57	94.70	0.11	0.10	7.02
	647.70	0.15	99.76	N/A	-2.76	1.51	647.69	-4237.31	2.87	94.40	0.34	-0.30	-38.07
	742.10	0.08	41.83	N/A	-2.73	1.68	742.09	-4142.91	2.85	94.40	0.13	-0.07	-61.37
	836.70	0.11	221.73	N/A	-2.75	1.66	836.69	-4048.31	2.87	94.60	0.20	0.03	190.17
	930.90	0.16	153.63	N/A	-2.94	1.66	930.89	-3954.11	3.06	94.20	0.17	0.05	-72.29
	1025.70	0.15	174.05	N/A	-3.18	1.73	1025.69	-3859.31	3.30	94.80	0.06	-0.01	21.54
	1120.10	0.20	172.11	N/A	-3.46	1.76	1120.09	-3764.91	3.59	94.40	0.05	0.05	-2.06
	1214.40	0.14	194.71	N/A	-3.74	1.76	1214.38	-3670.62	3.86	94.30	0.09	-0.06	23.97
	1308.60	0.34	221.47	N/A	-4.06	1.54	1308.58	-3576.42	4.17	94.20	0.24	0.21	28.41
	1403.20	0.46	240.49	N/A	-4.46	1.03	1403.18	-3481.82	4.52	94.60	0.19	0.13	20.11
	1498.30	0.40	239.38	N/A	-4.81	0.41	1498.28	-3386.72	4.83	95.10	0.06	-0.06	-1.17
	1592.70	0.20	273.19	N/A	-4.97	-0.04	1592.68	-3292.32	4.95	94.40	0.27	-0.21	35.82
	1687.60	0.32	351.17	N/A	-4.70	-0.24	1687.58	-3197.42	4.67	94.90	0.36	0.13	82.17
	1782.30	0.45	333.98	N/A	-4.11	-0.45	1782.27	-3102.73	4.06	94.70	0.18	0.14	-18.15
	1876.60	0.49	319.25	N/A	-3.47	-0.87	1876.57	-3008.43	3.39	94.30	0.13	0.04	-15.62
	1930.00	0.35	299.23	N/A	-3.22	-1.17	1929.97	-2955.03	3.11	53.40	0.38	-0.26	-37.49
	1980.00	0.31	236.68	90.5	-3.22	-1.41	1979.97	-2905.03	3.09	50.00	0.69	-0.08	-125.10
	2074.00	2.08	60.86	93.2	-2.52	-0.13	2073.95	-2811.05	2.51	94.00	2.54	1.88	-187.04
	2169.00	4.05	70.61	101.4	-0.57	4.54	2168.81	-2716.19	0.92	95.00	2.14	2.07	10.26
	2263.00	5.59	79.46	104.1	1.37	12.17	2262.48	-2622.52	-0.41	94.00	1.81	1.64	9.41
	2358.00	7.72	73.29	106.8	4.05	22.83	2356.83	-2528.17	-2.25	95.00	2.36	2.24	-6.49
	2452.00	9.38	55.68	112.2	10.19	35.21	2449.80	-2435.20	-7.41	94.00	3.28	1.77	-18.73
	2547.00	11.92	52.34	114.9	20.55	49.37	2543.16	-2341.84	-16.63	95.00	2.75	2.67	-3.52
	2642.00	13.67	54.04	117.6	33.13	66.22	2635.80	-2249.20	-27.86	95.00	1.88	1.84	1.79
	2736.00	15.51	54.60	120.3	46.94	85.46	2726.76	-2158.24	-40.12	94.00	1.96	1.96	0.60
	2831.00	15.70	48.19	120.3	62.87	105.40	2818.27	-2066.73	-54.44	95.00	1.83	0.20	-6.75
	2925.00	15.65	43.11	120.3	80.60	123.54	2908.77	-1976.23	-70.71	94.00	1.46	-0.05	-5.40
	3020.00	15.04	44.22	123.0	98.79	140.90	3000.39	-1884.61	-87.48	95.00	0.71	-0.64	1.17
	3114.00	14.60	51.74	123.0	114.87	158.71	3091.27	-1793.73	-102.12	94.00	2.10	-0.47	8.00
	3209.00	13.38	58.62	125.7	128.01	177.49	3183.46	-1701.54	-113.75	95.00	2.17	-1.28	7.24
	3303.00	15.16	59.89	128.4	139.84	197.41	3274.55	-1610.45	-123.99	94.00	1.92	1.89	1.35
	3398.00	15.22	54.63	128.4	153.29	218.33	3366.24	-1518.76	-135.77	95.00	1.45	0.06	-5.54
	3492.00	15.26	46.99	98.7	168.87	237.44	3456.94	-1428.06	-149.81	94.00	2.14	0.04	-8.13
	3682.00	15.20	37.10	133.8	205.80	270.75	3640.30	-1244.70	-184.02	190.00	1.37	-0.03	-5.21
	3776.00	15.05	37.91	133.8	225.26	285.68	3731.04	-1153.96	-202.25	94.00	0.28	-0.16	0.86
	3871.00	15.03	40.25	136.5	244.39	301.22	3822.79	-1062.21	-220.11	95.00	0.64	-0.02	2.46
	3966.00	14.96	42.35	139.2	262.85	317.44	3914.55	-970.45	-237.25	95.00	0.58	-0.07	2.21
	4060.00	15.00	49.91	139.2	279.66	334.92	4005.37	-879.63	-252.64	94.00	2.08	0.04	8.04
	4155.00	15.00	53.12	139.2	294.95	354.16	4097.13	-787.87	-266.39	95.00	0.87	0.00	3.38
	4249.00	14.98	51.44	141.9	309.82	373.39	4187.94	-697.06	-279.71	94.00	0.46	-0.02	-1.79
	4343.00	15.02	47.93	141.9	325.56	391.93	4278.73	-606.27	-293.95	94.00	0.97	0.04	-3.73
	4438.00	15.38	48.06	144.6	342.23	410.44	4370.41	-514.59	-309.12	95.00	0.38	0.38	0.14
	4533.00	15.23	47.48	147.3	359.08	429.01	4462.04	-422.96	-324.47	95.00	0.23	-0.16	-0.61
	4628.00	15.49	46.85	147.3	376.19	447.46	4553.65	-331.35	-340.09	95.00	0.33	0.27	-0.66
	4817.00	15.10	55.33	150.0	407.46	486.13	4735.98	-149.02	-368.24	189.00	1.20	-0.21	4.49
	4911.00	14.77	60.40	150.0	420.34	506.62	4826.81	-58.19	-379.48	94.00	1.43	-0.35	5.39
	5006.00	14.70	63.12	152.7	431.77	527.90	4918.68	33.68	-389.22	95.00	0.73	-0.07	2.86
	5101.00	15.10	63.12	152.7	442.82	549.68	5010.49	125.49	-398.53	95.00	0.42	0.42	0.00
	5196.00	15.15	64.15	347.3	453.82	571.89	5102.20	217.20	-407.77	95.00	0.29	0.05	1.08
	5290.00	15.27	63.34	158.1	464.73	594.01	5192.90	307.90	-416.92	94.00	0.26	0.13	-0.86
	5384.00	15.09	59.07	158.1	476.58	615.57	5283.63	398.63	-427.04	94.00	1.20	-0.19	-4.54
	5479.00	15.05	56.58	158.1	489.73	636.47	5375.36	490.36	-438.51	95.00	0.68	-0.04	-2.62
	5574.00	11.20	86.15	163.5	497.15	656.00	5467.96	582.96	-444.39	95.00	8.02	-4.05	31.13
	5668.00	12.77	122.17	163.5	492.22	673.93	5560.04	675.04	-438.08	94.00	7.99	1.67	38.32
	5763.00	20.13	156.19	166.2	471.61	689.47	5651.29	766.29	-416.31	95.00	12.46	7.75	35.81
	5858.00	25.64	176.75	168.9	436.04	697.25	5738.91	853.91	-380.25	95.00	10.14	5.80	21.64
	5952.00	31.47	187.83	171.6	391.36	695.06	5821.50	936.50	-335.87	94.00	8.36	6.20	11.79
	6047.00	36.40	187.50	168.9	338.82	688.00	5900.30	1015.30	-284.04	95.00	5.19	5.19	-0.35
	6141.00	48.13	177.05	174.3	275.91	686.15	5969.83	1084.83	-221.48	94.00	14.51	12.48	-11.12
	6236.00	59.40	174.59	177.0	199.63	691.84	6025.89	1140.89	-144.98	95.00	12.04	11.86	-2.59
	6330.00	69.85	173.22	179.7	115.31	700.89	6066.12	1181.12	-60.21	94.00	11.19	11.12	-1.46
	6425.00	80.22	173.18	182.5	24.30	711.75	6090.62	1205.62	31.37	95.00	10.92	10.92	-0.04
	6519.00	89.78	175.83	185.2	-68.80	720.69	6098.81	1213.81	124.88	94.00	10.55	10.17	2.82
	6614.00	89.94	179.25	185.2	-163.70	724.76	6099.04	1214.04	219.81	95.00	3.60	0.17	3.60
	6708.00	90.00	180.75	187.9	-257.69	724.76	6099.09	1214.09	313.52	94.00	1.60	0.06	1.60
	6803.00	90.03	181.41	190.6	-352.68	722.97	6099.06	1214.06	408.07	95.00	0.70	0.03	0.69
	6898.00	89.91	179.29	196.0	-447.67	722.39	6099.11	1214.11	502.73	95.00	2.24	-0.13	-2.23
	6993.00	90.09	177.94	196.0	-542.64	724.69	6099.11	1214.11	597.59	95.00	1.43	0.19	-1.42
	7087.00	89.88	178.44	198.7	-636.59	727.66	6099.14	1214.14	691.48	94.00	0.58	-0.22	0.53
	7181.00	89.75	178.59	201.4	-730.56	730.09	6099.44	1214.44	785.36	94.00	0.21	-0.14	0.16
	7276.00	89.82	176.30	201.4	-825.46	734.33	6099.80	1214.80	880.29	95.00	2.41	0.07	-2.41

	7371.00	90.18	183.36	204.1	-920.40	734.61	6099.80	1214.80	974.97	95.00	7.44	0.38	7.43
	7465.00	89.75	190.57	204.1	-1013.64	723.22	6099.85	1214.85	1067.04	94.00	7.68	-0.46	7.67
	7560.00	89.69	189.37	198.7	-1107.20	706.77	6100.32	1215.32	1159.03	95.00	1.26	-0.06	-1.26
	7654.00	89.82	181.36	198.7	-1200.72	697.99	6100.72	1215.72	1251.57	94.00	8.52	0.14	-8.52
	7749.00	89.82	179.63	201.4	-1295.71	697.17	6101.02	1216.02	1346.21	95.00	1.82	0.00	-1.82
	7844.00	90.00	177.03	204.1	-1390.66	699.94	6101.17	1216.17	1441.08	95.00	2.74	0.19	-2.74
	7938.00	89.91	175.27	206.8	-1484.44	706.25	6101.24	1216.24	1535.07	94.00	1.87	-0.10	-1.87
	8032.00	89.78	175.64	209.5	-1578.15	713.70	6101.50	1216.50	1629.07	94.00	0.42	-0.14	0.39
	8127.00	89.82	176.34	209.5	-1672.91	720.34	6101.83	1216.83	1724.07	95.00	0.74	0.04	0.74
	8221.00	89.91	177.80	212.2	-1766.79	725.14	6102.05	1217.05	1818.03	94.00	1.56	0.10	1.55
	8316.00	89.69	177.78	212.2	-1861.72	728.81	6102.38	1217.38	1912.96	95.00	0.23	-0.23	-0.02
	8410.00	89.91	178.31	214.9	-1955.66	732.01	6102.71	1217.71	2006.86	94.00	0.61	0.23	0.56
	8505.00	89.72	178.00	214.9	-2050.61	735.07	6103.02	1218.02	2101.76	95.00	0.38	-0.20	-0.33
	8600.00	89.72	180.71	214.9	-2145.59	736.14	6103.48	1218.48	2196.54	95.00	2.85	0.00	2.85
	8694.00	89.51	181.43	217.6	-2239.58	734.39	6104.11	1219.11	2290.10	94.00	0.80	-0.22	0.77
	8788.00	89.91	182.41	220.3	-2333.52	731.24	6104.59	1219.59	2383.51	94.00	1.13	0.43	1.04
	8883.00	89.91	182.81	220.3	-2428.42	726.91	6104.74	1219.74	2477.78	95.00	0.42	0.00	0.42
	8977.00	89.97	182.36	220.3	-2522.33	722.67	6104.84	1219.84	2571.07	94.00	0.48	0.06	-0.48
	9072.00	90.28	185.29	223.0	-2617.10	716.34	6104.63	1219.63	2665.06	95.00	3.10	0.33	3.08
	9167.00	90.18	188.42	223.0	-2711.41	705.00	6104.25	1219.25	2758.20	95.00	3.30	-0.11	3.29
	9261.00	90.12	184.68	217.6	-2804.78	694.28	6104.00	1219.00	2850.44	94.00	3.98	-0.06	-3.98
	9355.00	90.03	175.86	217.6	-2898.69	693.84	6103.88	1218.88	2944.03	94.00	9.38	-0.10	-9.38
	9450.00	90.25	177.50	220.3	-2993.52	699.34	6103.65	1218.65	3039.00	95.00	1.74	0.23	1.73
	9545.00	90.12	179.59	223.0	-3088.49	701.75	6103.34	1218.34	3133.87	95.00	2.20	-0.14	2.20
	9639.00	90.25	179.97	220.3	-3182.49	702.11	6103.04	1218.04	3227.61	94.00	0.43	0.14	0.40
	9733.00	90.62	179.03	223.0	-3276.48	702.93	6102.32	1217.32	3321.37	94.00	1.07	0.39	-1.00
	9828.00	90.25	182.23	223.0	-3371.46	701.89	6101.60	1216.60	3415.98	95.00	3.39	-0.39	3.37
	9923.00	90.25	182.05	223.0	-3466.39	698.34	6101.19	1216.19	3510.35	95.00	0.19	0.00	-0.19
	10017.00	89.88	181.95	223.0	-3560.33	695.06	6101.08	1216.08	3603.75	94.00	0.41	-0.39	-0.11
	10112.00	89.82	180.08	225.7	-3655.31	693.37	6101.33	1216.33	3698.31	95.00	1.97	-0.06	-1.97
	10207.00	89.75	176.48	225.7	-3750.25	696.23	6101.68	1216.68	3793.18	95.00	3.79	-0.07	-3.79
	10301.00	90.00	174.75	223.0	-3843.98	703.41	6101.89	1216.89	3887.18	94.00	1.86	0.27	-1.84
	10396.00	89.97	175.49	217.6	-3938.63	711.49	6101.91	1216.91	3982.17	95.00	0.78	-0.03	0.78
	10490.00	89.82	176.83	225.7	-4032.42	717.79	6102.09	1217.09	4076.16	94.00	1.43	-0.16	1.43
	10584.00	90.28	181.80	228.4	-4126.38	718.91	6102.00	1217.00	4169.93	94.00	5.31	0.49	5.29
	10679.00	89.91	183.19	228.4	-4221.29	714.78	6101.85	1216.85	4264.22	95.00	1.51	-0.39	1.46
	10774.00	89.75	179.38	228.4	-4316.25	712.65	6102.13	1217.13	4358.72	95.00	4.01	-0.17	-4.01
	10868.00	90.00	178.23	231.1	-4410.22	714.61	6102.33	1217.33	4452.57	94.00	1.25	0.27	-1.22
	10963.00	89.82	177.79	231.1	-4505.17	717.91	6102.48	1217.48	4547.48	95.00	0.50	-0.19	-0.46
	11057.00	89.88	177.02	233.8	-4599.07	722.16	6102.73	1217.73	4641.43	94.00	0.82	0.06	-0.82
	11152.00	89.91	176.77	236.5	-4693.93	727.31	6102.90	1217.90	4736.40	95.00	0.27	0.03	-0.26
	11246.00	89.97	176.67	236.5	-4787.78	732.69	6103.00	1218.00	4830.38	94.00	0.12	0.06	-0.11
	11341.00	88.49	177.66	236.5	-4882.65	737.38	6104.28	1219.28	4925.33	95.00	1.87	-1.56	1.04
	11435.00	87.69	177.52	236.5	-4976.51	741.33	6107.41	1222.41	5019.21	94.00	0.86	-0.85	-0.15
	11529.00	87.69	177.48	239.2	-5070.34	745.43	6111.20	1226.20	5113.08	94.00	0.04	0.00	-0.04
	11624.00	87.84	177.71	236.5	-5165.19	749.42	6114.91	1229.91	5207.94	95.00	0.29	0.16	0.24
	11718.00	87.66	179.02	236.5	-5259.08	752.10	6118.60	1233.60	5301.75	94.00	1.41	-0.19	1.39
	11813.00	87.81	179.39	239.2	-5353.99	753.41	6122.35	1237.35	5396.48	95.00	0.42	0.16	0.39
	11908.00	87.88	180.11	239.2	-5448.92	753.83	6125.92	1240.92	5491.16	95.00	0.76	0.07	0.76
	12002.00	87.81	179.76	241.9	-5542.86	753.93	6129.46	1244.46	5584.81	94.00	0.38	-0.07	-0.37
	12097.00	87.54	178.49	241.9	-5637.77	755.38	6133.31	1248.31	5679.54	95.00	1.37	-0.28	-1.34
	12191.00	91.82	179.87	241.9	-5731.73	756.73	6133.84	1248.84	5773.33	94.00	4.78	4.55	1.47
	12380.00	92.22	180.03	241.9	-5920.61	756.89	6127.17	1242.17	5961.64	189.00	0.23	0.21	0.08
	12474.00	92.13	180.32	241.9	-6014.54	756.61	6123.61	1238.61	6055.27	94.00	0.32	-0.10	0.31
	12569.00	91.82	180.70	244.6	-6109.48	755.76	6120.33	1235.33	6149.85	95.00	0.52	-0.33	0.40
	12663.00	91.76	180.88	241.9	-6203.43	754.46	6117.40	1232.40	6243.41	94.00	0.20	-0.06	0.19
	12757.00	91.63	180.74	241.9	-6297.38	753.14	6114.62	1229.62	6336.97	94.00	0.20	-0.14	-0.15
	12852.00	91.66	179.93	244.6	-6392.34	752.58	6111.89	1226.89	6431.59	95.00	0.85	0.03	-0.85
	12947.00	91.88	179.11	244.6	-6487.29	753.38	6108.95	1223.95	6526.31	95.00	0.89	0.23	-0.86
	13041.00	91.88	178.36	244.6	-6581.21	755.45	6105.87	1220.87	6620.11	94.00	0.80	0.00	-0.80
	13136.00	91.63	178.72	244.6	-6676.14	757.87	6102.96	1217.96	6714.94	95.00	0.46	-0.26	0.38
	13230.00	91.85	178.63	244.6	-6770.07	760.04	6100.11	1215.11	6808.75	94.00	0.25	0.23	-0.10
	13325.00	90.28	179.42	244.6	-6865.03	761.66	6098.34	1213.34	6903.55	95.00	1.85	-1.65	0.83
	13420.00	90.55	183.17	247.3	-6959.99	759.51	6097.65	1212.65	6998.05	95.00	3.96	0.28	3.95
	13514.00	90.52	183.74	247.3	-7053.82	753.85	6096.78	1211.78	7091.15	94.00	0.61	-0.03	0.61
	13609.00	90.09	180.18	244.6	-7148.74	750.60	6096.27	1211.27	7185.53	95.00	3.77	-0.45	-3.75
	13703.00	90.00	179.29	301.4	-7242.74	751.03	6096.20	1211.20	7279.28	94.00	0.95	-0.10	-0.95
	13798.00	90.18	177.07	247.3	-7337.69	754.05	6096.05	1211.05	7374.17	95.00	2.34	0.19	-2.34
	13892.00	90.18	177.13	247.3	-7431.57	758.81	6095.75	1210.75	7468.13	94.00	0.06	0.00	0.06
	13987.00	90.15	174.81	247.3	-7526.32	765.48	6095.48	1210.48	7563.12	95.00	2.44	-0.03	-2.44
	14082.00	90.18	175.36	250.0	-7620.97	773.62	6095.20	1210.20	7658.12	95.00	0.58	0.03	0.58
	14176.00	90.09	176.40	250.0	-7714.73	780.38	6094.98	1209.98	7752.11	94.00	1.11	-0.10	1.11
	14271.00	90.31	179.40	250.0	-7809.65	783.86	6094.65	1209.65	7847.02	95.00	3.17	0.23	3.16
	14366.00	90.28	180.83	250.0	-7904.65	783.67	6094.16	1209.16	7941.71	95.00	1.51	-0.03	1.51
	14460.00	90.28	180.12	250.0	-7998.65	782.89	6093.70	1208.70	8035.36	94.00	0.76	0.00	-0.76
	14555.00	90.40	179.31	250.0	-8093.64	783.36	6093.14	1208.14	8130.10	95.00	0.86	0.13	-0.85
	14650.00	90.31	175.56	252.7	-8188.53	787.61	6092.55	1207.55	8225.03	95.00	3.95	-0.09	-3.95
	14744.00	90.59	176.50	252.7	-8282.30	794.12	6091.81	1206.81	8319.02	94.00	1.04	0.30	1.00
	14839.00	90.52	177.84	252.7	-8377.18	798.81	6090.89	1205.89	8413.98	95.00	1.41	-0.07	1.41
	14933.00	90.59	178.14	252.7	-8471.11	802.10	6089.98	1204.98	8507.88	94.00	0.33	0.07	0.32
	15028.00	90.62	176.98	252.7	-8566.02	806.15	6088.98	1203.98	8602.82	95.00	1.22	0.03	-1.22
	15122.00	90.58	176.55	252.7	-8659.87	811.45	6087.99	1202.99	8696.79	94.00	0.46	-0.04	-0.46
	15217.00	90.68	176.53	252.7	-8754.69	817.19	6086.95	1201.95	8791.77	95.00	0.11	0.11	-0.02
	15311.00	90.46	176.56	255.4	-8848.51	822.85	6086.01	1201.01	8885.				