



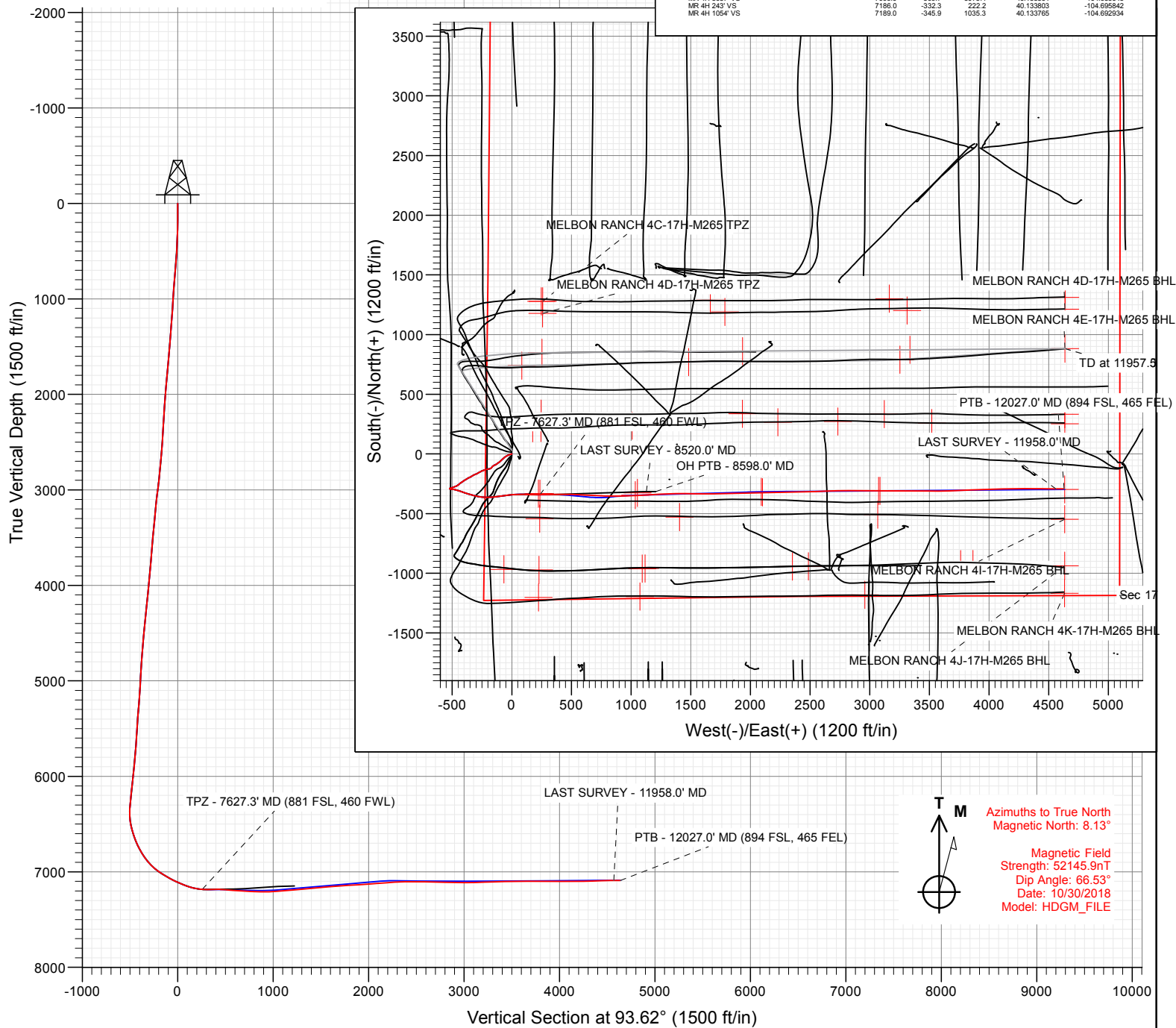
Project: Sec 17 T2N-R65W
Site: Melbon Ranch Pad
Well: MELBON RANCH 4H-17H-M265
Wellbore: STK
Design: FINAL

SECTION DETAILS

Sec	MD	Inc	Azi	TVD	+N/-S	+E/-W	Dleg	TFace	Vsect	Target
1	7711.0	90.78	88.32	7184.4	-341.2	319.7	0.00	0.00	340.9	
2	7855.6	88.00	95.00	7185.9	-345.4	464.2	5.00	112.61	485.3	
3	8055.6	88.00	95.00	7192.9	-362.8	663.3	0.00	0.00	685.2	
4	8233.0	89.78	83.41	7196.4	-360.4	840.4	6.61	-81.39	861.7	
5	8246.3	89.78	83.41	7196.4	-358.8	853.5	0.00	0.00	874.7	
6	8428.8	94.87	88.46	7189.0	-345.9	1035.3	3.92	44.67	1055.3	MR 4H 1054' VS
7	9488.6	94.87	88.46	7099.0	-317.5	2091.0	0.00	0.00	2107.0	MR 4H 2107' VS
8	9649.2	89.56	89.64	7092.8	-314.8	2251.3	3.39	167.41	2266.8	
9	10459.8	89.56	89.64	7099.0	-309.8	3061.9	0.00	0.00	3075.4	
10	10471.4	90.44	89.54	7099.0	-309.7	3073.4	7.64	-6.50	3087.0	MR 4H 3087' VS
11	12032.4	90.44	89.54	7087.0	-297.2	4634.3	0.00	0.00	4643.9	MELBON RANCH 4H-17H-M265 BHL

FINAL
MELBON RANCH 4H-17H-M265
WELL @ 4979.0ft (Original Well Elev)
Ground Level @ 4956.0
North American Datum 1983
Well MELBON RANCH 4H-17H-M265, True North

Name	Type	TD	Target	No	Target	Freehand	Azimuth	Origin	Type	N/S	E/W	From	TVD	Latitude	Longitude
MELBON RANCH 4H-17H-M265 BHL	TD	7087.0	-297.2	4634.3	40.13368	-104.68062	7087.0	-317.5	2091.0	40.133843	-104.689159				
MR 4H 2107' VS	TD	7099.0	-309.7	3073.4	40.133864	-104.685645	7099.0	-332.3	222.2	40.133803	-104.695942				
MR 4H 1054' VS	TD	7189.0	-345.9	1035.3	40.133765	-104.692934	7189.0	-345.9	1035.3	40.133765	-104.692934				



WELL DETAILS: MELBON RANCH 4H-17H-M265

+N/-S	+E/-W	Northing	Easting	Latitude	Longitude
0.0	0.0	1292940.36	3224623.87	40.134715	-104.696637



Survey Report

Company:	Crestone Peak Resources	Local Co-ordinate Reference:	Well MELBON RANCH 4H-17H-M265
Project:	Sec 17 T2N-R65W	TVD Reference:	WELL @ 4979.0ft (Original Well Elev)
Site:	Melbon Ranch Pad	MD Reference:	WELL @ 4979.0ft (Original Well Elev)
Well:	MELBON RANCH 4H-17H-M265	North Reference:	True
Wellbore:	STK	Survey Calculation Method:	Minimum Curvature
Design:	FINAL	Database:	USA EDM 5000 Multi Users DB

Project	Sec 17 T2N-R65W, Weld County, CO		
Map System:	US State Plane 1983	System Datum:	Mean Sea Level
Geo Datum:	North American Datum 1983		
Map Zone:	Colorado Northern Zone		

Site		Melbon Ranch Pad			
Site Position:		Northing:	1,292,990.36 ft	Latitude:	40.134852
From:	Map	Easting:	3,224,623.87 ft	Longitude:	-104.696635
Position Uncertainty:	0.0 ft	Slot Radius:	13.200 in	Grid Convergence:	0.52 °

Well		MELBON RANCH 4H-17H-M265				
Well Position	+N/-S	0.0 ft	Northing:	1,292,940.36 ft	Latitude:	40.134715
	+E/-W	0.0 ft	Easting:	3,224,623.87 ft	Longitude:	-104.696637
Position Uncertainty		0.0 ft	Wellhead Elevation:	ft	Ground Level:	4,956.0 ft

Wellbore	STK				
Magnetics	Model Name	Sample Date	Declination (°)	Dip Angle (°)	Field Strength (nT)
	HDGM_FILE	10/30/2018	8.13	66.53	52,145.90000000

Design	FINAL				
Audit Notes:					
Version:	1.0	Phase:	ACTUAL	Tie On Depth:	7,670.0
Vertical Section:	Depth From (TVD)	+N/-S	+E/-W	Direction	
	(ft)	(ft)	(ft)	(°)	
	0.0	0.0	0.0	93.62	

Survey Program	Date	11/13/2018			
From (ft)	To (ft)	Survey (Wellbore)	Tool Name	Description	
181.0	2,335.0	Survey #1 (OH)	GYRO-MWD	OWSG Gyro MWD	
2,450.0	7,670.0	Survey #2 (OH)	MWD+HDGM	OWSG MWD + HDGM	
7,764.0	12,027.0	Survey #1 (STK)	MWD+HDGM	OWSG MWD + HDGM	

Survey										
Measured			Vertical			Vertical	Dogleg	Build	Formations /	
Depth	Inclination	Azimuth	Depth	+N/-S	+E/-W	Section	Rate	Rate	Comments	
(ft)	(°)	(°)	(ft)	(ft)	(ft)	(ft)	(°/100ft)	(°/100ft)		
0.0	0.00	0.00	0.0	0.0	0.0	0.0	0.00	0.00		
181.0	0.70	227.20	181.0	-0.8	-0.8	-0.8	0.39	0.39		
276.0	1.23	268.42	276.0	-1.2	-2.3	-2.2	0.89	0.56		
370.0	2.11	271.32	369.9	-1.2	-5.0	-4.9	0.94	0.94		
465.0	2.73	253.30	464.9	-1.8	-8.9	-8.8	1.03	0.65		
559.0	4.49	250.40	558.7	-3.6	-14.5	-14.3	1.88	1.87		
653.0	5.37	247.50	652.3	-6.6	-22.1	-21.6	0.97	0.94		
748.0	6.33	241.17	746.8	-10.8	-30.7	-30.0	1.22	1.01		
822.0	5.02	245.78	820.5	-14.1	-37.3	-36.3	1.87	-1.77		
917.0	4.64	243.81	915.1	-17.5	-44.5	-43.3	0.44	-0.40		
1,012.0	3.72	235.96	1,009.9	-20.9	-50.5	-49.1	1.14	-0.97		

Survey Report

Company:	Crestone Peak Resources	Local Co-ordinate Reference:	Well MELBON RANCH 4H-17H-M265
Project:	Sec 17 T2N-R65W	TVD Reference:	WELL @ 4979.0ft (Original Well Elev)
Site:	Melbon Ranch Pad	MD Reference:	WELL @ 4979.0ft (Original Well Elev)
Well:	MELBON RANCH 4H-17H-M265	North Reference:	True
Wellbore:	STK	Survey Calculation Method:	Minimum Curvature
Design:	FINAL	Database:	USA EDM 5000 Multi Users DB

Survey

Measured Depth (ft)	Inclination (°)	Azimuth (°)	Vertical Depth (ft)	+N/-S (ft)	+E/-W (ft)	Vertical Section (ft)	Dogleg Rate (°/100ft)	Build Rate (°/100ft)	Formations / Comments
1,107.0	5.28	233.01	1,104.6	-25.3	-56.6	-54.9	1.66	1.64	
1,201.0	6.26	230.22	1,198.1	-31.1	-64.0	-61.9	1.08	1.04	
1,296.0	6.23	227.68	1,292.5	-37.9	-71.7	-69.2	0.29	-0.03	
1,390.0	6.66	227.09	1,385.9	-45.1	-79.5	-76.5	0.46	0.46	
1,484.0	7.15	222.88	1,479.3	-53.1	-87.5	-84.0	0.75	0.52	
1,579.0	6.40	232.15	1,573.6	-60.7	-95.7	-91.7	1.39	-0.79	
1,673.0	6.63	232.81	1,667.0	-67.2	-104.1	-99.7	0.26	0.24	
1,768.0	7.61	231.32	1,761.3	-74.4	-113.4	-108.5	1.05	1.03	
1,862.0	6.02	235.92	1,854.6	-81.1	-122.4	-117.0	1.79	-1.69	
1,957.0	5.46	232.38	1,949.1	-86.6	-130.1	-124.4	0.70	-0.59	
2,051.0	5.41	245.24	2,042.7	-91.2	-137.6	-131.6	1.29	-0.05	
2,146.0	4.96	245.58	2,137.3	-94.8	-145.4	-139.2	0.47	-0.47	
2,241.0	4.70	242.93	2,232.0	-98.2	-152.7	-146.2	0.36	-0.27	
2,335.0	4.49	234.03	2,325.7	-102.1	-159.1	-152.3	0.79	-0.22	
2,450.0	4.79	212.74	2,440.3	-108.8	-165.3	-158.1	1.51	0.26	
2,544.0	6.55	224.78	2,533.8	-115.9	-171.2	-163.5	2.25	1.87	
2,639.0	5.71	240.78	2,628.3	-122.1	-179.1	-171.1	2.00	-0.88	
2,733.0	6.59	258.62	2,721.8	-125.4	-188.5	-180.2	2.23	0.94	
2,828.0	4.92	261.17	2,816.3	-127.1	-197.9	-189.5	1.78	-1.76	
2,923.0	6.33	262.05	2,910.8	-128.5	-207.1	-198.6	1.49	1.48	
3,017.0	8.17	251.24	3,004.1	-131.4	-218.6	-209.8	2.43	1.96	
3,112.0	7.12	252.03	3,098.2	-135.3	-230.5	-221.5	1.11	-1.11	
3,229.0	5.32	252.03	3,214.5	-139.3	-242.6	-233.3	1.54	-1.54	
3,324.0	6.42	242.71	3,309.0	-143.0	-251.5	-242.0	1.53	1.16	
3,419.0	7.52	245.00	3,403.3	-148.1	-261.9	-252.0	1.19	1.16	
3,513.0	5.63	241.48	3,496.7	-152.9	-271.5	-261.3	2.05	-2.01	
3,607.0	6.33	239.28	3,590.2	-157.8	-280.0	-269.5	0.78	0.74	
3,702.0	4.48	235.15	3,684.8	-162.6	-287.5	-276.7	1.99	-1.95	
3,797.0	5.54	248.16	3,779.4	-166.4	-294.8	-283.8	1.63	1.12	
3,892.0	6.06	249.48	3,873.9	-169.8	-303.8	-292.5	0.57	0.55	
3,986.0	6.37	243.50	3,967.4	-173.9	-313.1	-301.5	0.76	0.33	
4,080.0	5.85	240.43	4,060.8	-178.6	-321.9	-310.0	0.65	-0.55	
4,175.0	8.00	239.11	4,155.2	-184.4	-331.8	-319.5	2.27	2.26	
4,269.0	7.73	239.02	4,248.3	-191.0	-342.9	-330.1	0.29	-0.29	
4,363.0	5.63	245.44	4,341.6	-196.2	-352.5	-339.4	2.37	-2.23	
4,458.0	5.76	250.62	4,436.2	-199.7	-361.2	-347.9	0.56	0.14	
4,552.0	7.34	234.80	4,529.5	-204.7	-370.6	-356.9	2.54	1.68	
4,647.0	6.06	236.03	4,623.9	-211.0	-379.7	-365.6	1.36	-1.35	
4,741.0	5.32	238.32	4,717.4	-216.1	-387.5	-373.1	0.82	-0.79	
4,836.0	4.92	242.89	4,812.1	-220.2	-394.9	-380.2	0.60	-0.42	
4,930.0	4.00	239.55	4,905.8	-223.7	-401.3	-386.4	1.02	-0.98	
5,025.0	3.08	230.23	5,000.6	-227.1	-406.1	-391.0	1.14	-0.97	
5,119.0	4.66	228.91	5,094.4	-231.2	-410.9	-395.5	1.68	1.68	
5,214.0	5.19	243.41	5,189.0	-235.6	-417.7	-402.0	1.42	0.56	
5,308.0	7.30	236.65	5,282.5	-240.8	-426.5	-410.4	2.37	2.24	
5,402.0	5.63	228.03	5,375.9	-247.2	-434.9	-418.4	2.05	-1.78	
5,496.0	5.71	226.10	5,469.4	-253.5	-441.7	-424.8	0.22	0.09	
5,591.0	4.48	240.60	5,564.0	-258.6	-448.3	-431.1	1.86	-1.29	
5,685.0	4.48	226.80	5,657.7	-262.9	-454.2	-436.7	1.14	0.00	
5,780.0	5.93	247.54	5,752.4	-267.3	-461.5	-443.7	2.48	1.53	
5,874.0	5.67	248.95	5,845.9	-270.9	-470.3	-452.3	0.32	-0.28	
5,968.0	6.46	245.70	5,939.4	-274.7	-479.4	-461.1	0.92	0.84	
6,063.0	7.65	250.27	6,033.6	-279.1	-490.3	-471.7	1.38	1.25	

Survey Report

Company:	Crestone Peak Resources	Local Co-ordinate Reference:	Well MELBON RANCH 4H-17H-M265
Project:	Sec 17 T2N-R65W	TVD Reference:	WELL @ 4979.0ft (Original Well Elev)
Site:	Melbon Ranch Pad	MD Reference:	WELL @ 4979.0ft (Original Well Elev)
Well:	MELBON RANCH 4H-17H-M265	North Reference:	True
Wellbore:	STK	Survey Calculation Method:	Minimum Curvature
Design:	FINAL	Database:	USA EDM 5000 Multi Users DB

Survey

Measured Depth (ft)	Inclination (°)	Azimuth (°)	Vertical Depth (ft)	+N/-S (ft)	+E/-W (ft)	Vertical Section (ft)	Dogleg Rate (°/100ft)	Build Rate (°/100ft)	Formations / Comments
6,157.0	5.93	253.17	6,127.0	-282.6	-500.8	-482.0	1.87	-1.83	
6,252.0	6.28	253.78	6,221.4	-285.4	-510.5	-491.5	0.37	0.37	
6,347.0	5.05	253.43	6,316.0	-288.1	-519.5	-500.3	1.30	-1.29	
6,441.0	3.52	149.28	6,409.8	-291.7	-522.0	-502.5	7.26	-1.63	
6,488.0	6.42	107.18	6,456.6	-293.8	-518.7	-499.2	9.53	6.17	
6,535.0	10.59	89.25	6,503.1	-294.5	-511.9	-492.3	10.41	8.87	
6,582.0	14.11	96.20	6,549.0	-295.0	-501.9	-482.3	8.12	7.49	
6,630.0	18.15	99.54	6,595.1	-296.9	-488.7	-469.0	8.63	8.42	
6,677.0	20.04	106.04	6,639.5	-300.4	-473.7	-453.8	6.05	4.02	
6,724.0	23.51	106.48	6,683.2	-305.2	-457.0	-436.8	7.39	7.38	
6,771.0	26.68	107.62	6,725.7	-311.1	-437.9	-417.4	6.82	6.74	
6,819.0	29.40	108.85	6,768.1	-318.2	-416.5	-395.6	5.79	5.67	
6,866.0	30.94	108.41	6,808.7	-325.7	-394.1	-372.8	3.31	3.28	
6,913.0	35.29	106.74	6,848.1	-333.4	-369.6	-347.9	9.46	9.26	
6,960.0	39.68	106.22	6,885.4	-341.6	-342.2	-320.0	9.36	9.34	
7,008.0	44.65	104.37	6,921.0	-350.0	-311.1	-288.5	10.67	10.35	
7,055.0	48.87	99.98	6,953.2	-357.2	-277.7	-254.6	11.26	8.98	
7,102.0	53.17	94.97	6,982.7	-361.9	-241.5	-218.2	12.34	9.15	
7,149.0	57.00	90.84	7,009.6	-363.8	-203.0	-179.7	10.88	8.15	
7,196.0	58.40	84.86	7,034.8	-362.3	-163.3	-140.2	11.16	2.98	
7,243.0	61.08	81.43	7,058.4	-357.4	-123.1	-100.3	8.50	5.70	
7,291.0	62.97	82.31	7,081.0	-351.5	-81.1	-58.8	4.26	3.94	
7,338.0	64.91	83.28	7,101.6	-346.2	-39.2	-17.3	4.52	4.13	
7,385.0	66.89	85.47	7,120.8	-342.0	3.5	25.0	5.99	4.21	
7,432.0	69.39	87.41	7,138.3	-339.3	47.0	68.3	6.55	5.32	
7,480.0	71.32	90.75	7,154.4	-338.5	92.2	113.4	7.69	4.02	
7,527.0	75.63	92.15	7,167.8	-339.7	137.2	158.4	9.60	9.17	
7,575.0	80.73	91.80	7,177.6	-341.3	184.2	205.3	10.65	10.62	
7,670.0	90.53	89.17	7,184.9	-342.1	278.8	299.8	10.68	10.32	
7,764.0	91.10	87.23	7,183.5	-339.1	372.7	393.4	2.15	0.61	
7,780.0	90.53	88.46	7,183.3	-338.5	388.7	409.3	8.47	-3.56	
7,796.0	89.43	89.17	7,183.3	-338.2	404.7	425.2	8.18	-6.87	
7,827.0	86.35	91.63	7,184.4	-338.4	435.7	456.1	12.71	-9.94	
7,859.0	85.52	91.28	7,186.7	-339.2	467.6	488.0	2.81	-2.59	
7,906.0	85.12	91.10	7,190.5	-340.2	514.4	534.8	0.93	-0.85	
7,953.0	86.48	92.33	7,194.0	-341.6	561.3	581.7	3.90	2.89	
8,000.0	86.05	92.86	7,197.1	-343.7	608.1	628.6	1.45	-0.91	
8,048.0	85.39	92.77	7,200.6	-346.1	655.9	676.4	1.39	-1.37	
8,142.0	87.98	92.86	7,206.1	-350.7	749.6	770.3	2.76	2.76	
8,237.0	88.81	91.01	7,208.7	-353.9	844.5	865.2	2.13	0.87	
8,331.0	91.54	87.94	7,208.4	-353.0	938.5	958.9	4.37	2.90	
8,426.0	94.70	87.58	7,203.3	-349.3	1,033.3	1,053.3	3.35	3.33	
8,520.0	94.48	85.21	7,195.8	-343.4	1,126.8	1,146.2	2.52	-0.23	
8,615.0	94.75	87.06	7,188.1	-337.1	1,221.3	1,240.1	1.96	0.28	
8,709.0	96.59	89.34	7,178.8	-334.1	1,314.8	1,333.2	3.11	1.96	
8,804.0	95.23	89.61	7,169.0	-333.3	1,409.2	1,427.5	1.46	-1.43	
8,898.0	94.53	90.57	7,161.0	-333.4	1,502.9	1,520.9	1.26	-0.74	
8,992.0	94.40	90.84	7,153.7	-334.6	1,596.6	1,614.5	0.32	-0.14	
9,087.0	93.34	89.61	7,147.3	-334.9	1,691.4	1,709.2	1.71	-1.12	
9,181.0	93.69	88.11	7,141.5	-333.1	1,785.2	1,802.6	1.64	0.37	
9,276.0	93.38	87.76	7,135.7	-329.6	1,880.0	1,897.0	0.49	-0.33	
9,370.0	94.31	89.61	7,129.4	-327.5	1,973.7	1,990.4	2.20	0.99	
9,465.0	94.22	88.90	7,122.3	-326.3	2,068.4	2,084.9	0.75	-0.09	

Survey Report

Company:	Crestone Peak Resources	Local Co-ordinate Reference:	Well MELBON RANCH 4H-17H-M265
Project:	Sec 17 T2N-R65W	TVD Reference:	WELL @ 4979.0ft (Original Well Elev)
Site:	Melbon Ranch Pad	MD Reference:	WELL @ 4979.0ft (Original Well Elev)
Well:	MELBON RANCH 4H-17H-M265	North Reference:	True
Wellbore:	STK	Survey Calculation Method:	Minimum Curvature
Design:	FINAL	Database:	USA EDM 5000 Multi Users DB

Survey

Measured Depth (ft)	Inclination (°)	Azimuth (°)	Vertical Depth (ft)	+N/-S (ft)	+E/-W (ft)	Vertical Section (ft)	Dogleg Rate (°/100ft)	Build Rate (°/100ft)	Formations / Comments
9,559.0	94.53	88.20	7,115.1	-323.9	2,162.1	2,178.3	0.81	0.33	
9,654.0	93.69	88.73	7,108.3	-321.3	2,256.9	2,272.6	1.04	-0.88	
9,749.0	91.76	88.99	7,103.8	-319.5	2,351.7	2,367.2	2.05	-2.03	
9,843.0	89.43	88.73	7,102.8	-317.6	2,445.7	2,460.9	2.49	-2.48	
9,937.0	88.68	88.11	7,104.4	-315.0	2,539.6	2,554.5	1.04	-0.80	
10,032.0	88.46	87.41	7,106.8	-311.3	2,634.5	2,648.9	0.77	-0.23	
10,126.0	88.99	88.73	7,108.9	-308.1	2,728.5	2,742.5	1.51	0.56	
10,220.0	89.17	90.13	7,110.4	-307.2	2,822.4	2,836.2	1.50	0.19	
10,314.0	88.86	90.48	7,112.0	-307.7	2,916.4	2,930.0	0.50	-0.33	
10,409.0	89.74	90.66	7,113.1	-308.6	3,011.4	3,024.9	0.95	0.93	
10,503.0	91.89	90.13	7,111.8	-309.3	3,105.4	3,118.7	2.36	2.29	
10,598.0	92.46	89.69	7,108.2	-309.1	3,200.3	3,213.5	0.76	0.60	
10,692.0	91.85	90.57	7,104.7	-309.3	3,294.3	3,307.2	1.14	-0.65	
10,787.0	91.01	89.96	7,102.3	-309.8	3,389.2	3,402.0	1.09	-0.88	
10,881.0	90.44	91.36	7,101.1	-310.9	3,483.2	3,495.9	1.61	-0.61	
10,976.0	91.45	89.17	7,099.5	-311.3	3,578.2	3,590.7	2.54	1.06	
11,070.0	89.74	88.20	7,098.6	-309.2	3,672.2	3,684.3	2.09	-1.82	
11,165.0	89.74	87.85	7,099.0	-305.9	3,767.1	3,778.9	0.37	0.00	
11,259.0	90.13	86.88	7,099.1	-301.6	3,861.0	3,872.3	1.11	0.41	
11,354.0	89.52	88.73	7,099.4	-297.9	3,955.9	3,966.8	2.05	-0.64	
11,449.0	89.47	87.76	7,100.2	-295.0	4,050.9	4,061.4	1.02	-0.05	
11,543.0	90.31	88.90	7,100.4	-292.3	4,144.8	4,155.0	1.51	0.89	
11,637.0	91.27	90.04	7,099.1	-291.4	4,238.8	4,248.8	1.59	1.02	
11,732.0	91.58	89.52	7,096.8	-291.0	4,333.8	4,343.5	0.64	0.33	
11,826.0	92.81	91.01	7,093.2	-291.5	4,427.7	4,437.3	2.05	1.31	
11,920.0	90.57	90.13	7,090.4	-292.4	4,521.7	4,531.1	2.56	-2.38	
11,958.0	90.22	90.04	7,090.1	-292.5	4,559.6	4,569.0	0.95	-0.92	LAST SURVEY - 11958.0' MD
12,027.0	90.22	90.04	7,089.9	-292.5	4,628.6	4,637.9	0.00	0.00	PTB - 12027.0' MD

Survey Report

Company:	Crestone Peak Resources	Local Co-ordinate Reference:	Well MELBON RANCH 4H-17H-M265
Project:	Sec 17 T2N-R65W	TVD Reference:	WELL @ 4979.0ft (Original Well Elev)
Site:	Melbon Ranch Pad	MD Reference:	WELL @ 4979.0ft (Original Well Elev)
Well:	MELBON RANCH 4H-17H-M265	North Reference:	True
Wellbore:	STK	Survey Calculation Method:	Minimum Curvature
Design:	FINAL	Database:	USA EDM 5000 Multi Users DB

Targets									
Target Name - hit/miss target - Shape	Dip Angle (°)	Dip Dir. (°)	TVD (ft)	+N/-S (ft)	+E/-W (ft)	Northing (ft)	Easting (ft)	Latitude	Longitude
MR 4H 3087' VS - actual wellpath misses target center by 13.7ft at 10471.3ft MD (7112.7 TVD, -309.2 N, 3073.6 E) - Point	0.00	0.00	7,099.0	-309.7	3,073.4	1,292,658.52	3,227,700.00	40.133864	-104.685645
MELBON RANCH 4H-17 - actual wellpath misses target center by 7.9ft at 12027.0ft MD (7089.9 TVD, -292.5 N, 4628.6 E) - Point	0.00	0.53	7,087.0	-297.2	4,634.3	1,292,685.13	3,229,260.72	40.133898	-104.680062
MR 4H 1054' VS - actual wellpath misses target center by 14.4ft at 8429.4ft MD (7203.0 TVD, -349.2 N, 1036.6 E) - Point	0.00	0.00	7,189.0	-345.9	1,035.3	1,292,603.85	3,225,662.26	40.133765	-104.692934
MR 4H 2107' VS - actual wellpath misses target center by 23.1ft at 9489.5ft MD (7120.5 TVD, -325.8 N, 2092.8 E) - Point	0.00	0.00	7,099.0	-317.5	2,091.0	1,292,641.82	3,226,717.61	40.133843	-104.689159
MR 4H 243' VS - actual wellpath misses target center by 10.4ft at 7613.6ft MD (7182.5 TVD, -342.2 N, 222.4 E) - Point	0.00	0.00	7,186.0	-332.3	222.2	1,292,610.06	3,224,849.09	40.133803	-104.695842

Design Annotations					
Measured Depth (ft)	Vertical Depth (ft)	Local Coordinates			
		+N/-S (ft)	+E/-W (ft)	Comment	
11,958.0	7,090.1	-292.5	4,559.6	LAST SURVEY - 11958.0' MD	
12,027.0	7,089.9	-292.5	4,628.6	PTB - 12027.0' MD	

Checked By: _____ Approved By: _____ Date: _____