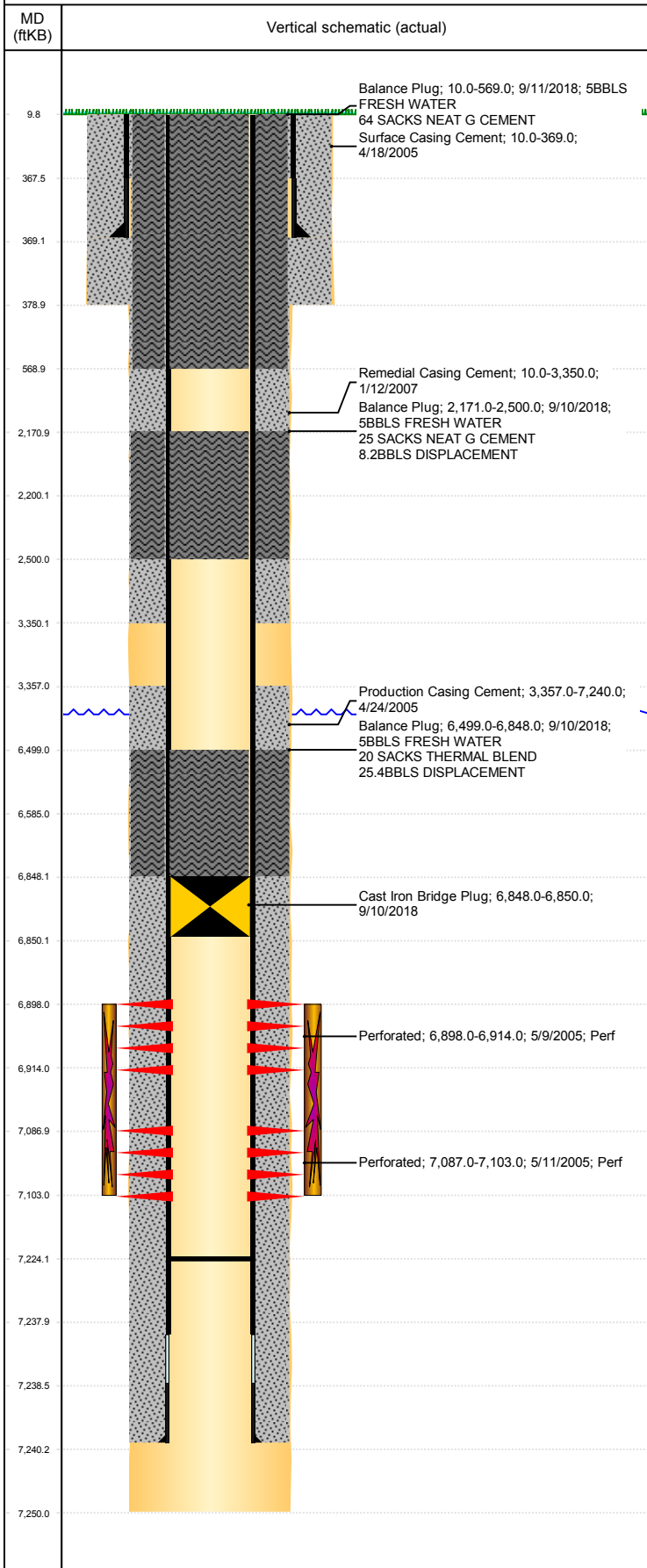


**Well Name: SWANSON 28-23**

VERTICAL, ORIGINAL HOLE, 12/28/2018 3:01:24 PM



Well Header									
API 05-123-22742		Business Unit DJ BASIN			District 15		Well Config VERTICAL		
KB - GL / MSL (ft... 10.00		Spud Date 4/17/2005		P & A Date 9/11/2018		Well Production Status PA			SoRT Yes
Comment									
Surface Location (Congressional)									
Qtr 3 SW	Qtr 4 NW	Section 28	Twonshp 6	Twonsh.... N	Range 66	Rng E/... W	Actual Latitude (°) 40.46156000	Actual Longitude (°) -104.79013000	
Wellbore Sections									
Section Des			Size (in)			Act Top, MD (ftKB)		Act Btm, MD (ftKB)	
SURFACE			12 1/4			10		379	
PRODUCTION			7 7/8			379		7,250	
Casing Strings									
Csg Des			Run Date	OD (in)	Wt/Len (lb/ft)	Grade	Top, MD (ftKB)	MD (ftKB)	
Surface			4/17/2005	8 5/8	24.00		10.0	369.0	
Production			4/24/2005	4 1/2	11.60	LT&C	10.0	7,240.0	
Cement									
Des				Start Date		Top (ftKB)		Btm (ftKB)	
Surface Casing Cement				4/18/2005		10.0		369.0	
Production Casing Cement				4/24/2005		3,357.0		7,240.0	
Remedial Casing Cement				1/12/2007		10.0		3,350.0	
Balance Plug				9/10/2018		6,499.0		6,848.0	
Balance Plug				9/10/2018		2,171.0		2,500.0	
Balance Plug				9/11/2018		10.0		569.0	
Zone Statuses									
Zone Name	Status Date	Status	Fluid Type	Job			Prod Method		
NIOBRARA-CO...	11/15/2010	PR	Water	ABANDON WELL, 9/7/2018 06:00			Flowing		
NIOBRARA-CO...	9/10/2018	P&A	Water						
CODELL	11/15/2010	PR	Water	ABANDON WELL, 9/7/2018 06:00			Flowing		
CODELL	9/10/2018	P&A	Water						
NIOBRARA	1/28/2016	PR		ABANDON WELL, 9/7/2018 06:00					
NIOBRARA	9/10/2018	P&A							
Perforation Data									
Linked Zone		Bnch/Stg	Entered Shot Total	Top (ftKB)		Btm (ftKB)		Date	
NIOBRARA, ORIGINAL HOLE		B	65	6,898.00		6,914.00		5/9/2005	
CODELL, ORIGINAL HOLE			65	7,087.00		7,103.00		5/11/2005	
Stimulation Intervals									
Zone				Start Date		Top (ftKB)		Btm (ftKB)	
NIOBRARA-CODELL, ORIGINAL HOLE				5/13/2005		6,898.0		7,103.0	
Other In Hole									
Run Date		Des				OD (in)	Top (ftKB)	Btm (ftKB)	
9/10/2018		Cast Iron Bridge Plug				4	6,848.0	6,850.0	
Logs									
Date		Type				Top, MD (ftKB)		Btm, MD (ftKB)	
4/23/2005		COMPENSATED DENSITY				3,000.0		7,239.0	
4/23/2005		DUAL INDUCTION				369.0		7,239.0	
5/5/2005		SONIC BOND/GR/CCL				3,200.0		4,800.0	
5/5/2005		SONIC BOND/GR/CCL				6,200.0		7,199.0	
3/27/2018		GYRO				10.0		7,000.0	
Plug Back Total Depths									
Date		Type		Com				Depth (ftKB)	
4/24/2005		FILL						7,224.0	