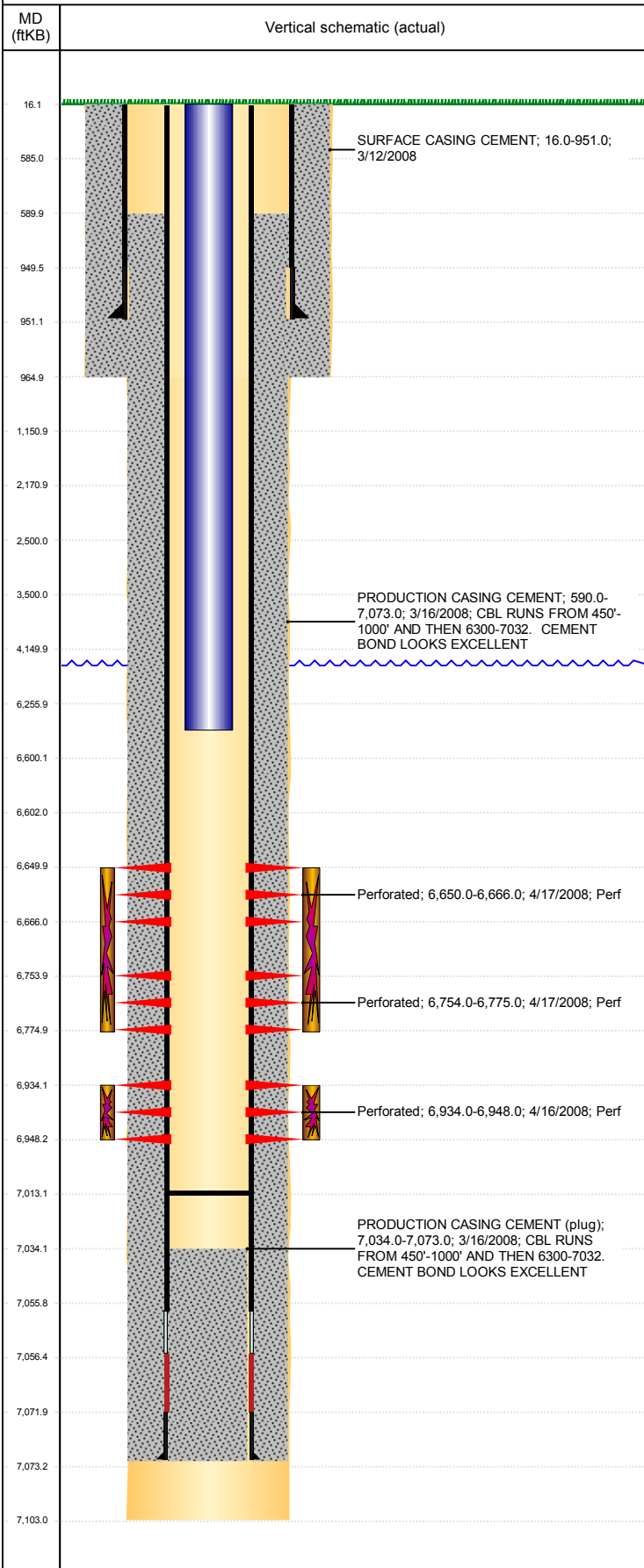


Well Name: CARPIO 22-4-19

VERTICAL, ORIGINAL HOLE, 12/30/2018 4:26:26 PM



Well Header									
API 05-123-25557		Business Unit DJ BASIN			District 15		Well Config VERTICAL		
KB - GL / MSL (ft... 16.00		Spud Date 3/11/2008		P & A Date		Well Production Status PR			SoRT No
Comment									
Surface Location (Congressional)									
Qtr 3 SW	Qtr 4 SE	Section 22	Twnshp 6	Twnsh.... N	Range 64	Rng E/... W	Actual Latitude (°) 40.46803558	Actual Longitude (°) -104.53480650	
Wellbore Sections									
Section Des			Size (in)			Act Top, MD (ftKB)		Act Btm, MD (ftKB)	
SURFACE			12 1/4			16		965	
PRODUCTION			7 7/8			965		7,103	
Casing Strings									
Csg Des			Run Date		OD (in)	Wt/Len (lb/ft)	Grade	Top, MD (ftKB)	MD (ftKB)
Surface			3/12/2008		8 5/8	24.00		16.0	951.0
Production			3/15/2008		4 1/2	11.60	M-80	16.0	7,073.0
Cement									
Des					Start Date		Top (ftKB)		Btm (ftKB)
SURFACE CASING CEMENT					3/12/2008		16.0		951.0
PRODUCTION CASING CEMENT					3/16/2008		590.0		7,073.0
Zone Statuses									
Zone Name	Status Date	Status	Fluid Type		Job			Prod Method	
CODELL	4/28/2008	PR			DRILLING/COMPLETION - ORIGINAL, 3/11/2008...				
NIOBRARA	4/28/2008	PR			DRILLING/COMPLETION - ORIGINAL, 3/11/2008...				
Perforation Data									
Linked Zone		Bnch/Stg	Entered Shot Total		Top (ftKB)		Btm (ftKB)		Date
NIOBRARA, ORIGINAL HOLE		A	32		6,650.00		6,666.00		4/17/2008
NIOBRARA, ORIGINAL HOLE		B	84		6,754.00		6,775.00		4/17/2008
CODELL, ORIGINAL HOLE			56		6,934.00		6,948.00		4/16/2008
Stimulation Intervals									
Zone				Start Date		Top (ftKB)		Btm (ftKB)	
NIOBRARA, ORIGINAL HOLE				4/17/2008		6,650.0		6,775.0	
CODELL, ORIGINAL HOLE				4/17/2008		6,934.0		6,948.0	
Other In Hole									
Run Date		Des				OD (in)	Top (ftKB)	Btm (ftKB)	
Logs									
Date		Type				Top, MD (ftKB)		Btm, MD (ftKB)	
3/15/2008		COMPENSATED DENSITY				3,540.0		7,077.0	
3/15/2008		INDUCTION				951.0		7,097.0	
4/11/2008		CBL/CCL/GR				450.0		7,032.0	
11/3/2015		GYRO				0.0		6,350.0	
Plug Back Total Depths									
Date		Type		Com				Depth (ftKB)	
4/11/2008		FILL		DEPTH LOGGER ON CBL				7,034.0	
11/23/2008		PLUG REMNANTS		DRILLED OUT CIBP				7,013.0	