

T5N, R66W

E. 1/16 COR.
SEC. 20 & SEC. 29, T5N, R66W
FOUND 3 1/4" ALUM. CAP
L.S. NO. 34995

NE. COR.
SEC. 29, T5N, R66W
FOUND 3 1/4" ALUM. CAP
L.S. NO. 22098

NW. COR.
SEC. 29, T5N, R66W
FOUND 2 1/2" ALUM. CAP
P.L.S. NO. 38230

N. 1/4 COR.
SEC. 29, T5N, R66W
FOUND 3 1/4" ALUM. CAP
L.S. NO. 22098

S 89°35'38" W
1305.33' (M)

S 89°35'48" W
1305.41' (M)

S 89°08'56" W 2699.27' (M)

N 01°30'59" W
1321.51' (M)

2243'

811'

N 00°06'04" E
2648.70' (M)

1877'

N. 1/16 COR.
SEC. 29 & SEC. 30
T5N, R66W
FOUND 3 1/4" ALUM. CAP
L.S. NO. 7242

SANFORD 8N-27B-XR
SURFACE HOLE LOCATION

TOP OF PRODUCTIVE ZONE

2464'

WELLBORE CONTINUES
INTO SECTION 28
T5N, R66W

W. 1/4 COR.
SEC. 29, T5N, R66W
FOUND 3 1/4" ALUM. CAP
P.L.S. NO. 10855

S 89°16'14" W
2624.55' (M)

CENTER 1/4 COR.
SEC. 29, T5N, R66W
FOUND 3 1/4" ALUM. CAP
L.S. NO. 7242

S 89°16'11" W
1307.58' (M)

E. 1/16 COR.
SEC. 29, T5N, R66W
FOUND 3 1/4" ALUM. CAP
L.S. NO. 34995

S 89°15'51" W
1307.60' (M)

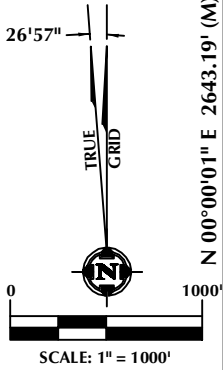
E. 1/4 COR.
SEC. 29, T5N, R66W
FOUND 3 1/4" ALUM. CAP
L.S. NO. 7242

SURFACE HOLE LOCATION
GROUND ELEVATION= 4905.0'
LATITUDE= 40.375526°
LONGITUDE= -104.804909°
1/4 1/4: NE1/4 NW1/4
TOP OF PRODUCTIVE ZONE
LATITUDE= 40.372608°
LONGITUDE= -104.802851°
1/4 1/4: SW1/4 NE1/4
BOTTOM OF PRODUCTIVE ZONE
LATITUDE= 40.372515°
LONGITUDE= -104.757858°
1/4 1/4: SE1/4 NE1/4
BOTTOM HOLE LOCATION
LATITUDE= 40.372514°
LONGITUDE= -104.757499°
1/4 1/4: SE1/4 NE1/4

N 00°05'49" E
2647.97' (M)

N 00°00'10" E 2652.61' (M)

MATCH LINE
SEE SHEET 2



SW. COR.
SEC. 29, T5N, R66W
FOUND 3 1/4" ALUM. CAP
P.L.S. NO. 10855

S 89°22'26" W 2620.03' (M)

S. 1/4 COR.
SEC. 29, T5N, R66W
FOUND 3 1/4" ALUM. CAP
L.S. NO. 7242

S 89°22'11" W 2619.48' (M)

SE. COR.
SEC. 29, T5N, R66W
FOUND 3 1/4" BRASS CAP
L.S. NO. 16415

CERTIFICATE OF SURVEYOR:

THIS IS TO CERTIFY THAT THE ABOVE PLAT WAS PREPARED FROM FIELD NOTES OF ACTUAL SURVEY MADE BY ME OR UNDER MY SUPERVISION AND THAT THE SAME ARE TRUE AND CORRECT TO THE BEST OF MY KNOWLEDGE AND BELIEF. THIS CERTIFICATE DOES NOT REPRESENT A LAND SURVEY PLAT OR IMPROVEMENT SURVEY PLAT AS DEFINED BY C.S. 19-51-302 AND CANNOT BE RELIED UPON TO DETERMINE OWNERSHIP.

Randall K. French
PROFESSIONAL LAND SURVEYOR
COLORADO REGISTRATION NUMBER 38512
9/14/18

NOTICE:
ACCORDING TO COLORADO STATE LAW YOU MUST COMMENCE A LEGAL ACTION BASED UPON ANY DEFECT IN THIS SURVEY WITHIN THREE YEARS AFTER YOU FIRST DISCOVER SUCH DEFECT. IN NO EVENT MAY ANY ACTION BASED UPON ANY DEFECT IN THIS SURVEY BE COMMENCED MORE THAN TEN YEARS FROM THE DATE ON THE CERTIFICATION SHOWN HEREON.

WELL DISTANCES:

BUILDING: ±595' N
BUILDING UNIT: ±2109' N
HIGH OCCUPANCY BUILDING UNIT: ±5072' E
DESIGNATED OUTSIDE ACTIVITY AREA: 5280'±
PUBLIC ROAD: ±419' E
ABOVE GROUND UTILITY: ±404' E
RAILROAD: 5280'±
PROPERTY LINE: ±434' E

NOTES:

- ▲ INDICATES SECTION CORNER.
- ⊙ INDICATES CALCULATED CORNER.
- DRAWING LATITUDE AND LONGITUDE COORDINATES ARE NAD 83 (2011)(EPOCH:2010).
- ELEVATION BASED ON NAVD88 (GEOID12B).
- BASIS OF BEARING DERIVED FROM COLORADO COORDINATE SYSTEM OF 1983 NORTH ZONE.
- ALL MEASURED DISTANCES ARE GRID.
COMBINED SCALE FACTOR: .99972855 CALCULATED FROM THE E. 1/4 CORNER OF SECTION 29, T5N, R66W.
- OPERATOR: ROB WILSON / PDOP = 1.6.
- SEE ADDENDUM TO WELL LOCATION CERTIFICATE FOR EXISTING IMPROVEMENTS WITHIN 500' OF THE WELL PAD.
- WELL FOOTAGES ARE MEASURED AT RIGHT ANGLES TO THE SECTION LINES.
- THE BOTTOM HOLE LOCATION BEARS N89°41'26"E, 12636' FROM THE TOP OF PRODUCTIVE ZONE.

WELL PAD - SANFORD 21-29 PAD

SANFORD 8N-27B-XR
WELL LOCATION CERTIFICATE
811' FNL & 2243' FWL NENW (SURFACE HOLE LOCATION)
1877' FNL & 2464' FEL SWNE (TOP OF PRODUCTIVE ZONE)
LOCATED IN SECTION 29
1924' FNL & 460' FEL SENE (BOTTOM OF PRODUCTIVE ZONE)
1924' FNL & 360' FEL SENE (BOTTOM HOLE LOCATION)
LOCATED IN SECTION 27
T5N, R66W, 6TH P.M.
WELD COUNTY, COLORADO



SRC ENERGY

1675 Broadway, Suite 2600
Denver, Colorado 80202



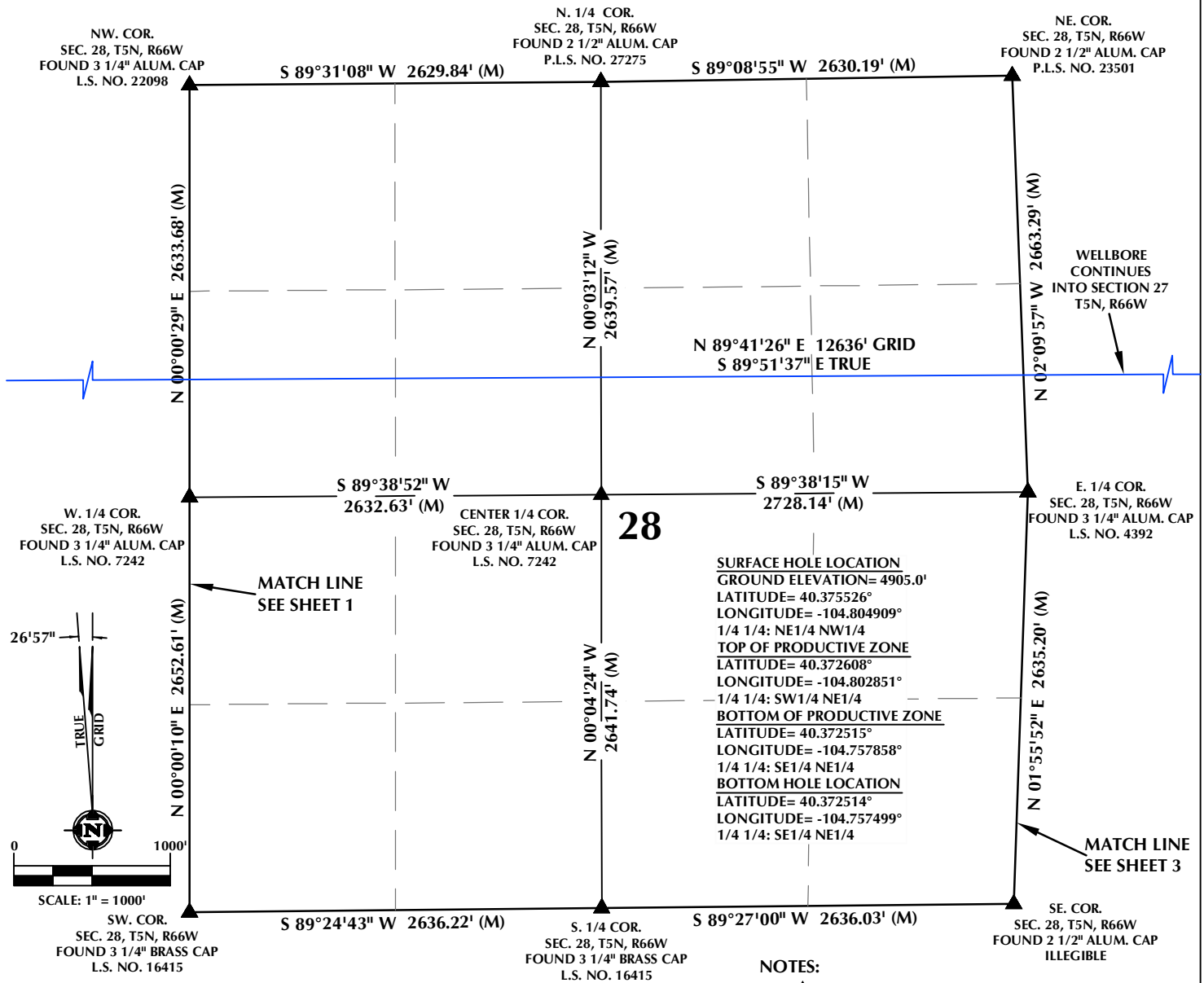
CONSULTING, LLC

SHERIDAN OFFICE
1095 Saberton Avenue
Sheridan, Wyoming 82801
Phone 307-674-0609

LOVELAND OFFICE
6706 North Franklin Avenue
Loveland, Colorado 80538
Phone 970-776-4331

DRAFTED BY:	LMO	CHECKED BY:	RKF	SHEET NO:
DATE DRAFTED:	9/14/18	DATE SURVEYED:	8/30/18	1
REVISED:		FILE NAME:	17-232	1 OF 3

T5N, R66W



CERTIFICATE OF SURVEYOR:

THIS IS TO CERTIFY THAT THE ABOVE PLAT WAS PREPARED FROM FIELD NOTES OF ACTUAL SURVEY MADE BY ME OR UNDER MY SUPERVISION AND THAT THE SAME ARE TRUE AND CORRECT TO THE BEST OF MY KNOWLEDGE AND BELIEF. THIS CERTIFICATE DOES NOT REPRESENT A LAND SURVEY PLAT OR IMPROVEMENT SURVEY PLAT AS DEFINED BY C.S. 19-51-302 AND CANNOT BE RELIED UPON TO DETERMINE OWNERSHIP.

Randall K. French
 RANDALL K. FRENCH
 PROFESSIONAL LAND SURVEYOR
 COLORADO REGISTRATION NUMBER: 38512

9/14/18
 RANDALL K. FRENCH
 PROFESSIONAL LAND SURVEYOR
 COLORADO REGISTRATION NUMBER: 38512

NOTICE:
 ACCORDING TO COLORADO STATE LAW YOU MUST COMMENCE A LEGAL ACTION BASED UPON ANY DEFECT IN THIS SURVEY WITHIN THREE YEARS AFTER YOU FIRST DISCOVER SUCH DEFECT. IN NO EVENT MAY ANY ACTION BASED UPON ANY DEFECT IN THIS SURVEY BE COMMENCED MORE THAN TEN YEARS FROM THE DATE ON THE CERTIFICATION SHOWN HEREON.

WELL DISTANCES:

BUILDING: ±595' N
 BUILDING UNIT: ±2109' N
 HIGH OCCUPANCY BUILDING UNIT: ±5072' E
 DESIGNATED OUTSIDE ACTIVITY AREA: 5280'+
 PUBLIC ROAD: ±419' E
 ABOVE GROUND UTILITY: ±404' E
 RAILROAD: 5280'+
 PROPERTY LINE: ±434' E

NOTES:

- ▲ INDICATES SECTION CORNER.
- INDICATES CALCULATED CORNER.
- DRAWING LATITUDE AND LONGITUDE COORDINATES ARE NAD 83 (2011)(EPOCH:2010).
- ELEVATION BASED ON NAVD88 (GEOID12B).
- BASIS OF BEARING DERIVED FROM COLORADO COORDINATE SYSTEM OF 1983 NORTH ZONE.
- ALL MEASURED DISTANCES ARE GRID.
COMBINED SCALE FACTOR: .99972855 CALCULATED FROM THE E. 1/4 CORNER OF SECTION 29, T5N, R66W.
- OPERATOR: ROB WILSON / PDOP = 1.6.
- SEE ADDENDUM TO WELL LOCATION CERTIFICATE FOR EXISTING IMPROVEMENTS WITHIN 500' OF THE WELL PAD.
- WELL FOOTAGES ARE MEASURED AT RIGHT ANGLES TO THE SECTION LINES.
- THE BOTTOM HOLE LOCATION BEARS N89°41'26"E, 12636' FROM THE TOP OF PRODUCTIVE ZONE.

WELL PAD - SANFORD 21-29 PAD

SANFORD 8N-27B-XR
 WELL LOCATION CERTIFICATE
 811' FNL & 2243' FEL NENW (SURFACE HOLE LOCATION)
 1877' FNL & 2464' FEL SWNE (TOP OF PRODUCTIVE ZONE)
 LOCATED IN SECTION 29
 1924' FNL & 460' FEL SENE (BOTTOM OF PRODUCTIVE ZONE)
 1924' FNL & 360' FEL SENE (BOTTOM HOLE LOCATION)
 LOCATED IN SECTION 27
 T5N, R66W, 6TH P.M.
 WELD COUNTY, COLORADO



SRC ENERGY

1675 Broadway, Suite 2600
 Denver, Colorado 80202



CONSULTING, LLC

SHERIDAN OFFICE
 1095 Saberton Avenue
 Sheridan, Wyoming 82801
 Phone 307-674-0609

LOVELAND OFFICE
 6706 North Franklin Avenue
 Loveland, Colorado 80538
 Phone 970-776-4331

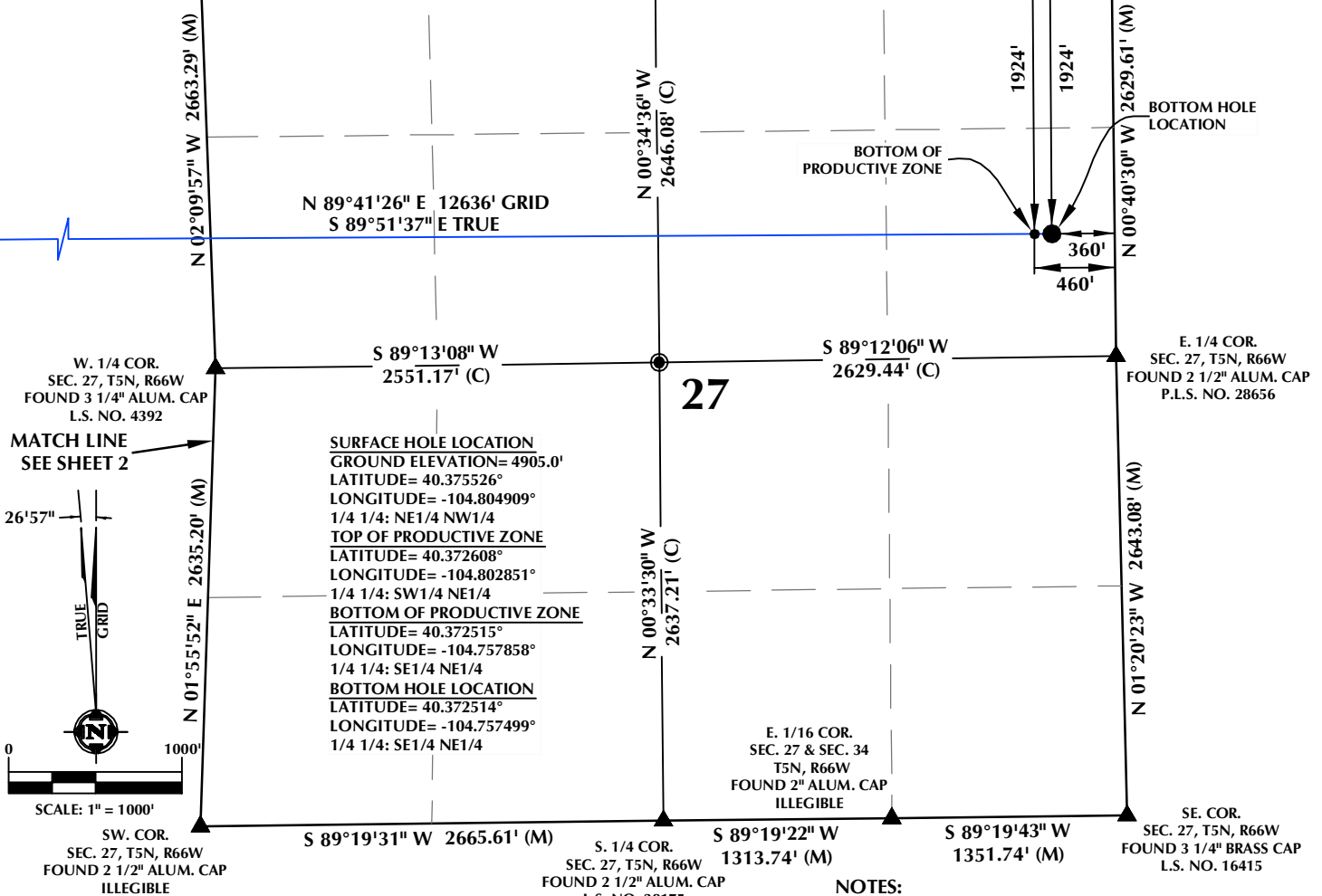
DRAFTED BY:	LMO	CHECKED BY:	RKF	SHEET NO:
DATE DRAFTED:	9/14/18	DATE SURVEYED:	8/30/18	2
REVISED:		FILE NAME:	17-232	2 OF 3

T5N, R66W

N. 1/4 COR.
SEC. 27, T5N, R66W
FOUND 2 1/2" ALUM. CAP
L.S. NO. 12374

NE. COR.
SEC. 27, T5N, R66W
FOUND 2 1/2" ALUM. CAP
P.L.S. NO. 37947

NW. COR.
SEC. 27, T5N, R66W
FOUND 2 1/2" ALUM. CAP
P.L.S. NO. 23501



CERTIFICATE OF SURVEYOR:

THIS IS TO CERTIFY THAT THE ABOVE PLAT WAS PREPARED FROM FIELD NOTES OF ACTUAL SURVEY MADE BY ME OR UNDER MY SUPERVISION AND THAT THE SAME ARE TRUE AND CORRECT TO THE BEST OF MY KNOWLEDGE AND BELIEF. THIS CERTIFICATE DOES NOT REPRESENT A LAND SURVEY PLAT OR IMPROVEMENT SURVEY PLAT AS DEFINED BY C.S. 38-51-302 AND CANNOT BE RELIED UPON TO DETERMINE OWNERSHIP.

Randall K. French
PROFESSIONAL LAND SURVEYOR
COLORADO REGISTRATION NUMBER: 38512
9/14/18

NOTICE:
ACCORDING TO COLORADO STATE LAW YOU MUST COMMENCE A LEGAL ACTION BASED UPON ANY DEFECT IN THIS SURVEY WITHIN THREE YEARS AFTER YOU FIRST DISCOVER SUCH DEFECT. IN NO EVENT MAY ANY ACTION BASED UPON ANY DEFECT IN THIS SURVEY BE COMMENCED MORE THAN TEN YEARS FROM THE DATE ON THE CERTIFICATION SHOWN HEREON.

WELL PAD - SANFORD 21-29 PAD

SANFORD 8N-27B-XR
WELL LOCATION CERTIFICATE
811' FNL & 2243' FWL NENW (SURFACE HOLE LOCATION)
1877' FNL & 2464' FEL SWNE (TOP OF PRODUCTIVE ZONE)
LOCATED IN SECTION 29
1924' FNL & 460' FEL SENE (BOTTOM OF PRODUCTIVE ZONE)
1924' FNL & 360' FEL SENE (BOTTOM HOLE LOCATION)
LOCATED IN SECTION 27
T5N, R66W, 6TH P.M.
WELD COUNTY, COLORADO



SRC ENERGY

1675 Broadway, Suite 2600
Denver, Colorado 80202



CONSULTING, LLC

SHERIDAN OFFICE
1095 Saberton Avenue
Sheridan, Wyoming 82801
Phone 307-674-0609

LOVELAND OFFICE
6706 North Franklin Avenue
Loveland, Colorado 80538
Phone 970-776-4331

DRAFTED BY:	LMO	CHECKED BY:	RKF	SHEET NO:
DATE DRAFTED:	9/14/18	DATE SURVEYED:	8/30/18	3
REVISED:		FILE NAME:	17-232	3 OF 3