

# FRYE NORTH 29W-15-7C WELL LOCATION EXHIBIT

2 1/2" ALUM. CAP  
PLS 24307, 2005  
(FIELD DATE 2-13-17)

3 1/4" ALUM. CAP  
LS 34995, 2016  
(FIELD DATE 2-13-17)

3 1/4" ALUM. CAP  
LS 22098, 1999  
(FIELD DATE 2-14-17)

**SURFACE LOCATION:**  
GROUND ELEVATION=4960'  
NAD83  
LATITUDE:40.541794° N  
LONGITUDE:104.918440° W

**LANDING POINT LOCATION:**  
NAD83  
LATITUDE:40.545328° N  
LONGITUDE:104.919138° W

**BOTTOM HOLE LOCATION:**  
NAD83  
LATITUDE:40.544587° N  
LONGITUDE:104.942540° W

**NOTES:**  
BH LOCATION PROVIDED BY CLIENT.  
LAND SURFACE USE- DRY LAND CROP  
SEE LOCATION DRAWING FOR ADDITIONAL  
IMPROVEMENTS WITHIN 500'

PDOP=1.8  
GPS OPERATOR: AARON RIVERA

LP: 2641' FNL  
2181' FWL

29

2 1/2" ALUM. CAP  
LS 24307, 2005  
(FIELD DATE 2-15-17)

3 1/4" ALUM. CAP  
LS 22098, 1999  
(FIELD DATE 2-14-17)

2 1/2" ALUM. CAP  
PLS 38304, 2014  
(FIELD DATE 2-13-17)

BHL: 2634' FSL  
460' FWL } SEC. 30

FRYE NORTH 29W-15-7C

3 1/4" ALUM. CAP  
LS 22098, 2001  
(FIELD DATE 2-13-17)

1322.97'

1322.94'

1322.73'

1322.70'

3 1/4" ALUM. CAP  
LS 22098, 1999  
(FIELD DATE 2-21-17)

3 1/4" ALUM. CAP  
LS 33642, 2005  
(FIELD DATE 2-13-17)

3 1/4" ALUM. CAP  
PLS 30310, 2017  
(FIELD DATE 4-11-17)

3 1/4" ALUM. CAP  
PLS 38304, 2017  
(FIELD DATE 4-11-17)

## LEGEND

- = EXISTING MONUMENT
- = CALCULATED POSITION
- = PROPOSED WELL
- ◆ = EXISTING WELL
- ▲ = BOTTOM HOLE
- ▲ = LANDING POINT
- LP = LANDING POINT
- BHL = BOTTOM HOLE LOCATION

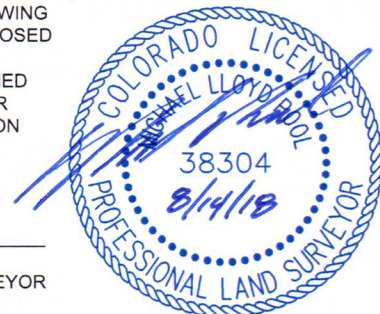
## NOTES:

- THIS FIELD SURVEY CONFORMS TO THE MINIMUM STANDARDS SET BY THE C.O.G.C.C., RULE NO. 215
- ALL DISTANCES AND BEARINGS SHOWN HEREON ARE GROUND VALUES AS GPS MEASURED IN THE FIELD, WITH TIES TO WELLS MEASURED PERPENDICULAR TO LINES SHOWN HEREON. THIS LOW DISTORTION PROJECTION (LDP) IS BASED ON THE NORTH AMERICAN DATUM OF 1983, U.S. SURVEY FOOT WITH A LATITUDE ORIGIN OF 40.574349°N, A CENTRAL MERIDIAN LONGITUDE OF 104.926734°W, AND A SCALE FACTOR ON THE CENTRAL MERIDIAN OF 1.000237 (EXACT). THE LDP BASIS OF BEARINGS IS GEODETIC NORTH.
- FIELD VERIFICATION OF MONUMENTS COMPLETED WITHIN 1 YEAR OF SIGNATURE DATE, UNLESS OTHERWISE NOTED.

## WELL FRYE NORTH 29W-15-7C TO BE LOCATED 1371' FSL & 2385' FWL

I, MICHAEL L. POOL, A LICENSED PROFESSIONAL LAND SURVEYOR IN THE STATE OF COLORADO, DO HEREBY STATE TO **EXTRACTION OIL & GAS** THAT THE WELL LOCATION EXHIBIT SHOWN HEREON WAS PREPARED BY ME OR UNDER MY DIRECT SUPERVISION AND THE DRAWING SHOWN HEREON ACCURATELY DEPICTS THE PROPOSED LOCATION OF THE WELL. THIS EXHIBIT MEETS THE REQUIREMENTS OF A GIS LAND POSITION AS DEFINED BY SECTION 38-51-102 (7.5) C.R.S. AND AS SUCH PER SECTION 38-51-109.3 C.R.S. CANNOT BE RELIED UPON TO DETERMINE OWNERSHIP.

MICHAEL L. POOL, PLS 38304  
COLORADO LICENSED PROFESSIONAL LAND SURVEYOR  
FOR AND ON BEHALF OF P.F.S., LLC  
d.b.a. ASCENT GEOMATICS SOLUTIONS



SHEET 1 OF 2

NOTICE: ACCORDING TO COLORADO LAW YOU MUST COMMENCE ANY LEGAL ACTION BASED UPON ANY DEFECT IN THIS SURVEY WITHIN THREE YEARS AFTER YOU FIRST DISCOVER SUCH DEFECT. IN NO EVENT MAY ANY ACTION BASED UPON ANY DEFECT IN THIS SURVEY BE COMMENCED MORE THAN TEN YEARS FROM THIS SAID DATE OF THIS CERTIFICATION SHOWN HEREON.



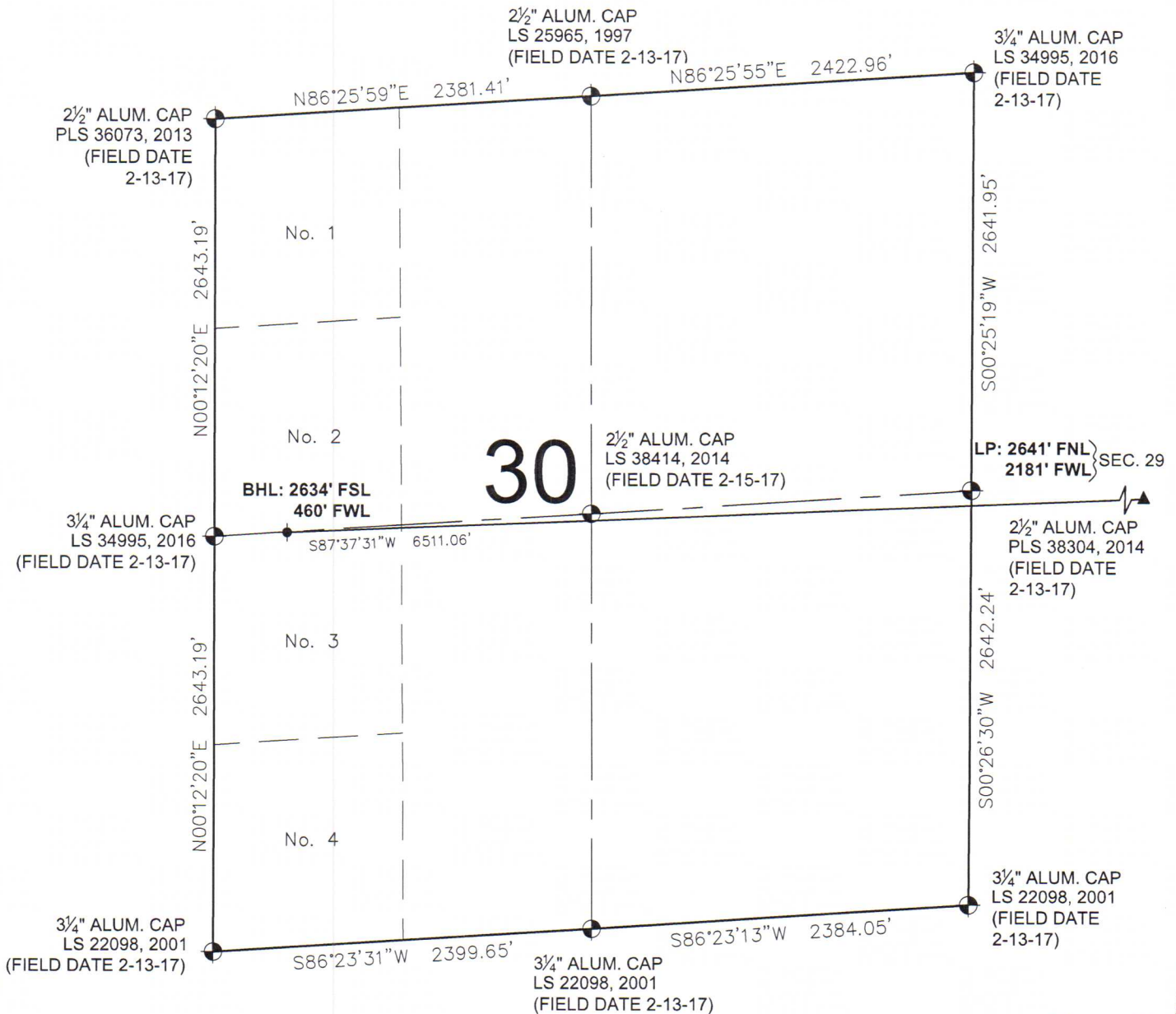
FIELD DATE:  
09-14-17  
DRAWING DATE:  
08-08-18  
BY:  
FWM  
CHECKED:  
VQD

WELL NAME:  
FRYE NORTH 29W-15-7C  
SURFACE LOCATION:  
NE 1/4 SW 1/4 SEC. 29, T7N, R67W, 6TH P.M.  
WELD COUNTY, COLORADO

PREPARED FOR:



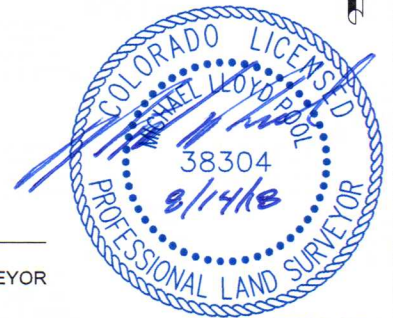
# FRYE NORTH 29W-15-7C WELL LOCATION EXHIBIT



## LEGEND

- ⊕ = EXISTING MONUMENT
- = CALCULATED POSITION
- = PROPOSED WELL
- ◆ = EXISTING WELL
- ⬮ = BOTTOM HOLE
- ▲ = LANDING POINT
- LP = LANDING POINT
- BHL = BOTTOM HOLE LOCATION

MICHAEL L. POOL, PLS 38304  
COLORADO LICENSED PROFESSIONAL LAND SURVEYOR  
FOR AND ON BEHALF OF P.F.S., LLC  
d.b.a. ASCENT GEOMATICS SOLUTIONS



SHEET 2 OF 2



FIELD DATE:  
09-14-17

DRAWING DATE:  
08-08-18

BY:  
FWM

CHECKED:  
VQD

WELL NAME:  
FRYE NORTH 29W-15-7C

SURFACE LOCATION:  
NE 1/4 SW 1/4 SEC. 29, T7N, R67W, 6TH P.M.  
WELD COUNTY, COLORADO

PREPARED FOR:

