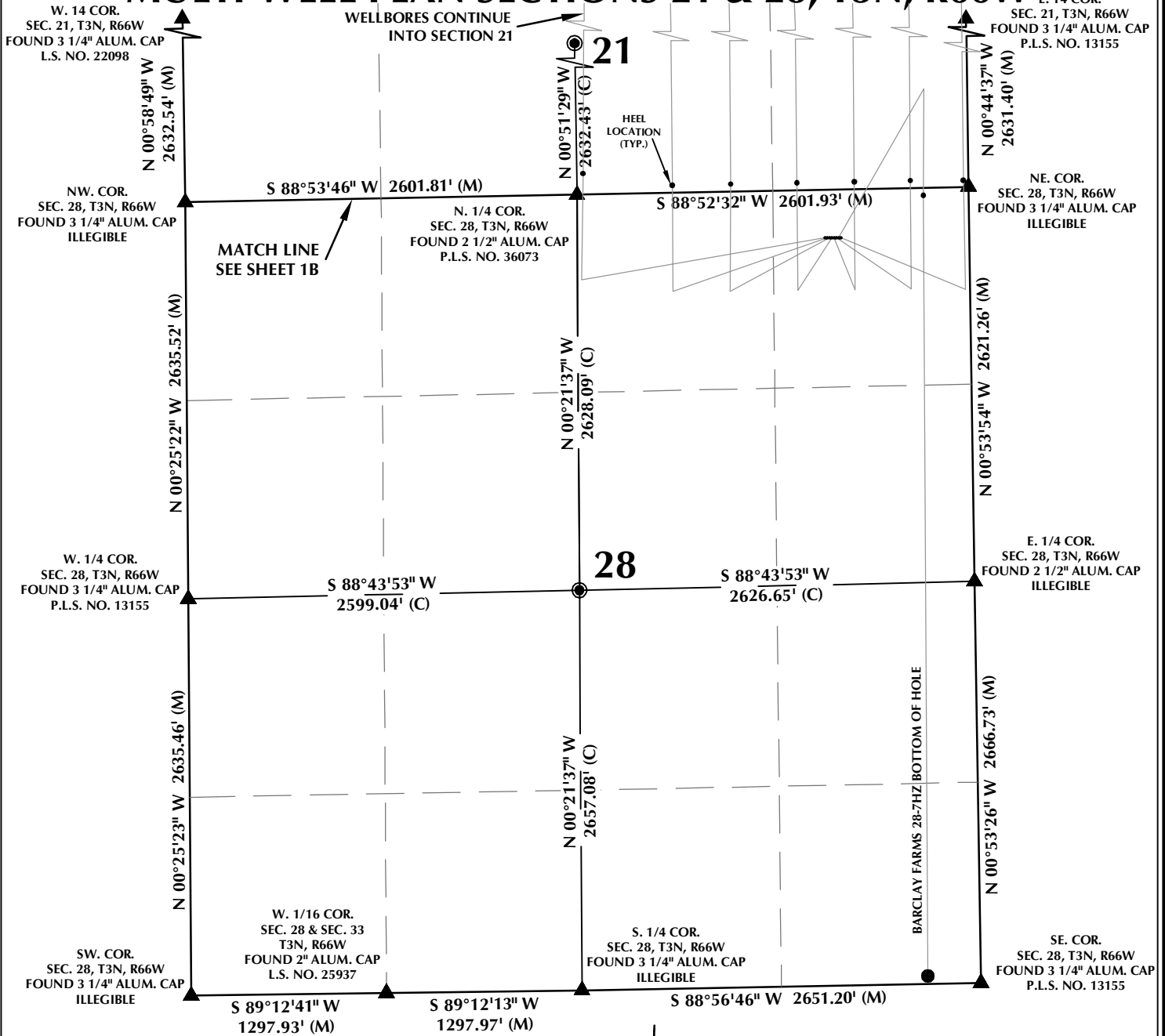


MULTI-WELL PLAN SECTIONS 21 & 28, T3N, R66W



WELL NOTES:

BARCLAY FARMS 28-1HZ
SURFACE: 319' FNL, 957' FEL, SEC. 28
BOTTOM HOLE: 50' FNL, 2411' FEL, SEC. 16
BARCLAY FARMS 28-2HZ
SURFACE: 319' FNL, 942' FEL, SEC. 28
BOTTOM HOLE: 50' FNL, 2000' FEL, SEC. 16
BARCLAY FARMS 28-3HZ
SURFACE: 320' FNL, 927' FEL, SEC. 28
BOTTOM HOLE: 50' FNL, 1587' FEL, SEC. 16
BARCLAY FARMS 28-4HZ
SURFACE: 320' FNL, 912' FEL, SEC. 28
BOTTOM HOLE: 49' FNL, 1199' FEL, SEC. 16

BARCLAY FARMS 28-5HZ
SURFACE: 320' FNL, 897' FEL, SEC. 28
BOTTOM HOLE: 50' FNL, 787' FEL, SEC. 16
BARCLAY FARMS 28-6HZ
SURFACE: 320' FNL, 882' FEL, SEC. 28
BOTTOM HOLE: 50' FNL, 383' FEL, SEC. 16
BARCLAY FARMS 28-7HZ
SURFACE: 321' FNL, 867' FEL, SEC. 28
BOTTOM HOLE: 50' FNL, 351' FEL, SEC. 28
BARCLAY FARMS 28-8HZ
SURFACE: 321' FNL, 852' FEL, SEC. 28
BOTTOM HOLE: 50' FNL, 57' FEL, SEC. 16

NOTES:

- ▲ INDICATES SECTION CORNER.
- INDICATES CALCULATED CORNER.
- BASIS OF BEARING DERIVED FROM COLORADO COORDINATE SYSTEM OF 1983 NORTH ZONE.
- ALL MEASURED DISTANCES ARE GRID.
- COMBINED SCALE FACTOR: .99972278 CALCULATED FROM THE W. 1/4 CORNER OF SECTION 21, T3N, R66W.
- SEE ADDENDUM TO WELL LOCATION CERTIFICATE FOR EXISTING IMPROVEMENTS WITHIN 500' OF THE WELL PAD.
- WELL FOOTAGES ARE MEASURED AT RIGHT ANGLES TO THE SECTION LINES.

WELL PAD - BARCLAY FARMS 37-28HZ

MULTI-WELL PLAN
BARCLAY FARMS 28-1HZ, BARCLAY FARMS 28-2HZ,
BARCLAY FARMS 28-3HZ, BARCLAY FARMS 28-4HZ,
BARCLAY FARMS 28-5HZ, BARCLAY FARMS 28-6HZ,
BARCLAY FARMS 28-7HZ & BARCLAY FARMS 28-8HZ
LOCATED IN SECTIONS 16, 21 & 28
T3N, R66W, 6TH P.M.
WELD COUNTY, COLORADO

**Kerr-McGee Oil &
Gas Onshore L.P.**
1099 18th Street
Denver, Colorado 80202



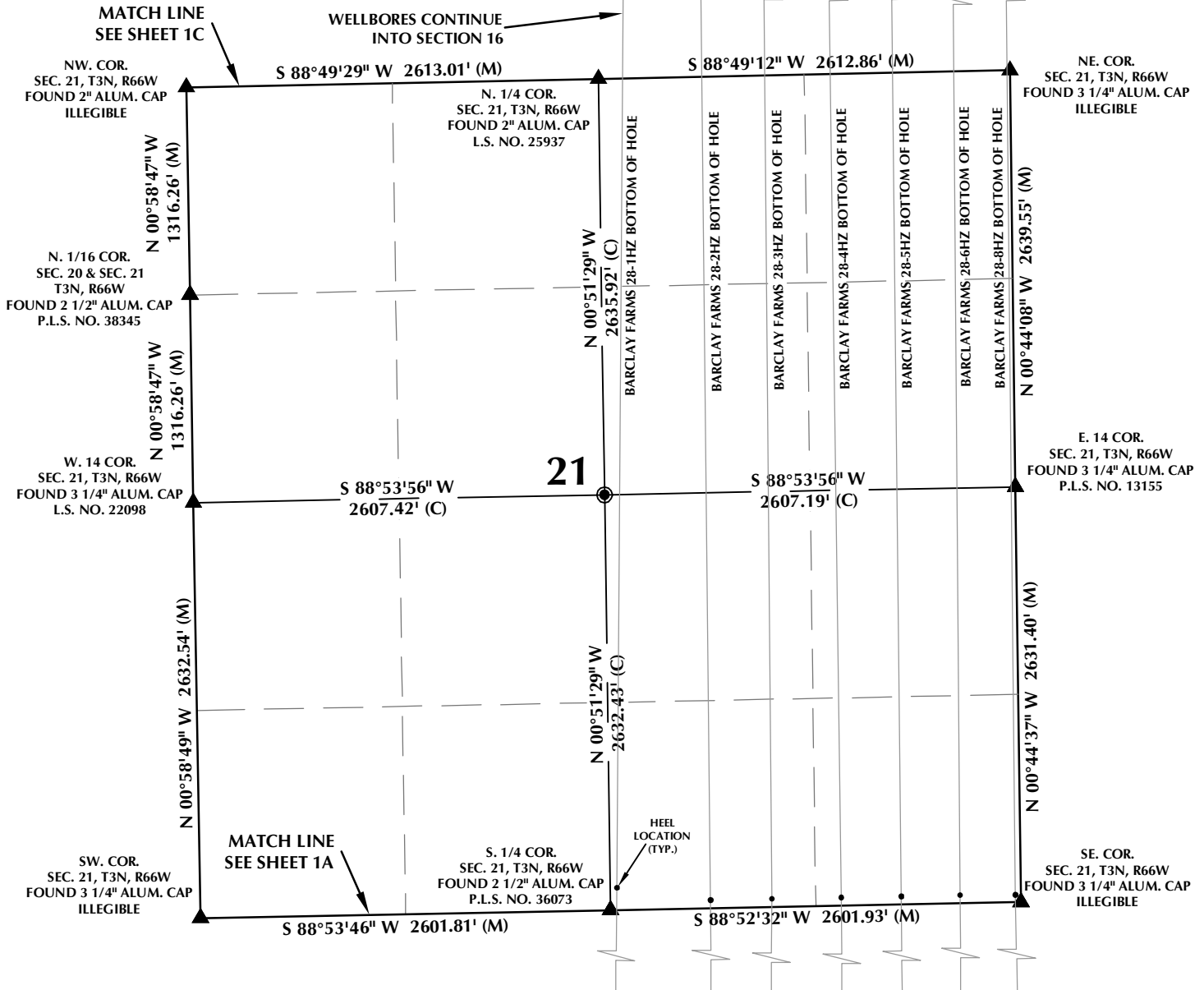
CONSULTING, LLC

SHERIDAN OFFICE
1095 Saberton Avenue
Sheridan, Wyoming 82801
Phone 307-674-0609

LOVELAND OFFICE
6706 North Franklin Avenue
Loveland, Colorado 80538
Phone 970-776-4331

DRAFTED BY:	LMO	CHECKED BY:	RKF	SHEET NO:
DATE DRAFTED:	10/17/18	DATE SURVEYED:	9/26/18	1A
REVISED:		FILE NAME:	18-95	1A OF 1

MULTI-WELL PLAN SECTION 21, T3N, R66W



WELL NOTES:

BARCLAY FARMS 28-1HZ
SURFACE: 319' FNL, 957' FEL, SEC. 28
BOTTOM HOLE: 50' FNL, 2411' FEL, SEC. 16

BARCLAY FARMS 28-2HZ
SURFACE: 319' FNL, 942' FEL, SEC. 28
BOTTOM HOLE: 50' FNL, 2000' FEL, SEC. 16

BARCLAY FARMS 28-3HZ
SURFACE: 320' FNL, 927' FEL, SEC. 28
BOTTOM HOLE: 50' FNL, 1587' FEL, SEC. 16

BARCLAY FARMS 28-4HZ
SURFACE: 320' FNL, 912' FEL, SEC. 28
BOTTOM HOLE: 49' FNL, 1199' FEL, SEC. 16

BARCLAY FARMS 28-5HZ
SURFACE: 320' FNL, 897' FEL, SEC. 28
BOTTOM HOLE: 50' FNL, 787' FEL, SEC. 16

BARCLAY FARMS 28-6HZ
SURFACE: 320' FNL, 882' FEL, SEC. 28
BOTTOM HOLE: 50' FNL, 383' FEL, SEC. 16

BARCLAY FARMS 28-7HZ
SURFACE: 321' FNL, 867' FEL, SEC. 28
BOTTOM HOLE: 50' FNL, 351' FEL, SEC. 28

BARCLAY FARMS 28-8HZ
SURFACE: 321' FNL, 852' FEL, SEC. 28
BOTTOM HOLE: 50' FNL, 57' FEL, SEC. 16

NOTES:

- ▲ INDICATES SECTION CORNER.
- INDICATES CALCULATED CORNER.
- BASIS OF BEARING DERIVED FROM COLORADO COORDINATE SYSTEM OF 1983 NORTH ZONE.
- ALL MEASURED DISTANCES ARE GRID.
- COMBINED SCALE FACTOR: .99972278 CALCULATED FROM THE W. 1/4 CORNER OF SECTION 21, T3N, R66W.
- SEE ADDENDUM TO WELL LOCATION CERTIFICATE FOR EXISTING IMPROVEMENTS WITHIN 500' OF THE WELL PAD.
- WELL FOOTAGES ARE MEASURED AT RIGHT ANGLES TO THE SECTION LINES.

WELL PAD - BARCLAY FARMS 37-28HZ

MULTI-WELL PLAN
BARCLAY FARMS 28-1HZ, BARCLAY FARMS 28-2HZ, BARCLAY FARMS 28-3HZ, BARCLAY FARMS 28-4HZ, BARCLAY FARMS 28-5HZ, BARCLAY FARMS 28-6HZ, BARCLAY FARMS 28-7HZ & BARCLAY FARMS 28-8HZ
LOCATED IN SECTIONS 16, 21 & 28
T3N, R66W, 6TH P.M.
WELD COUNTY, COLORADO

Kerr-McGee Oil & Gas Onshore L.P.
1099 18th Street
Denver, Colorado 80202



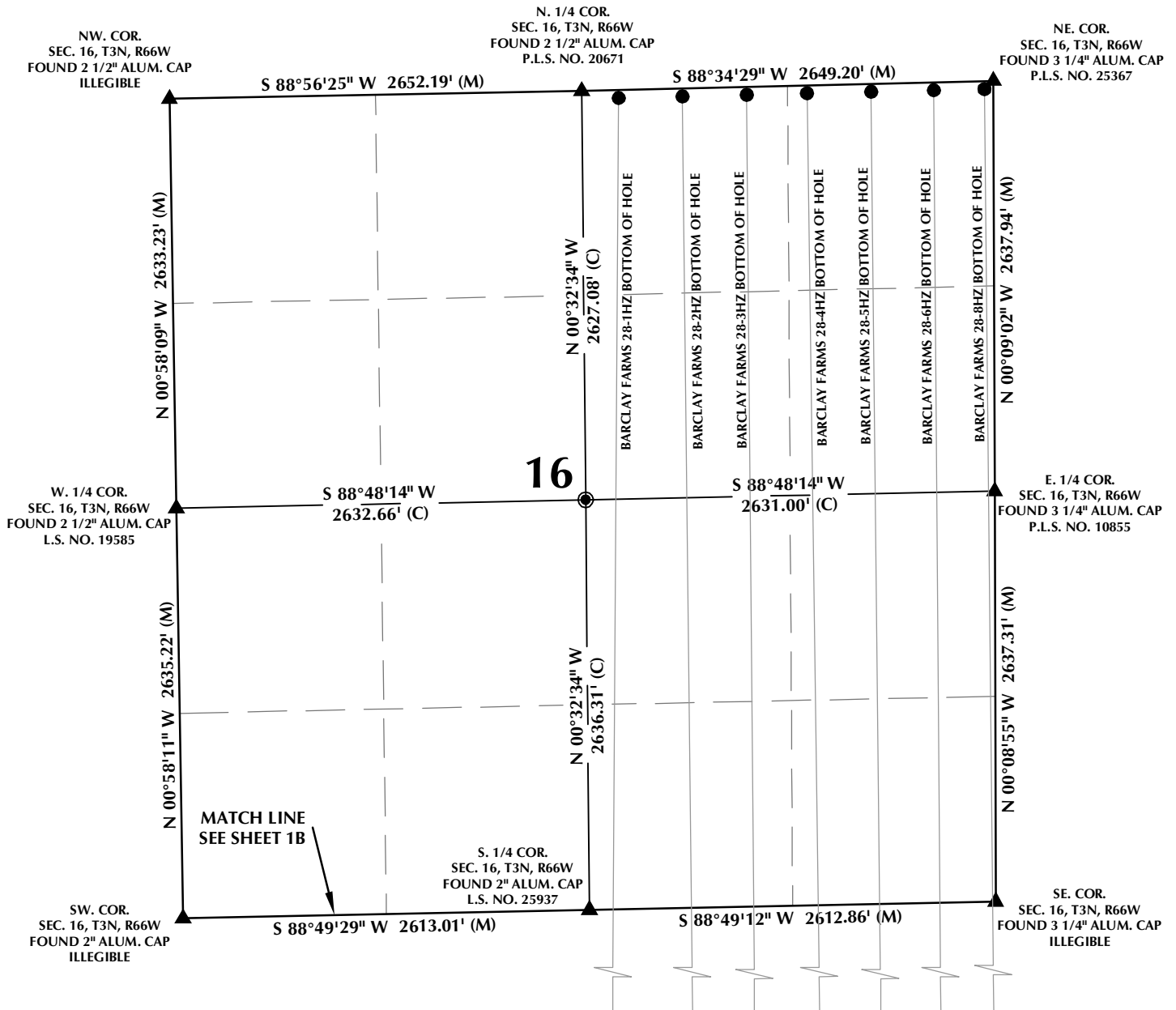
CONSULTING, LLC

SHERIDAN OFFICE
1095 Saberton Avenue
Sheridan, Wyoming 82801
Phone 307-674-0609

LOVELAND OFFICE
6706 North Franklin Avenue
Loveland, Colorado 80538
Phone 970-776-4331

DRAFTED BY:	LMO	CHECKED BY:	RKF	SHEET NO:
DATE DRAFTED:	10/17/18	DATE SURVEYED:	9/26/18	1B
REVISED:		FILE NAME:	18-95	1B OF 1

MULTI-WELL PLAN SECTION 16, T3N, R66W



WELL NOTES:

BARCLAY FARMS 28-1HZ
SURFACE: 319' FNL, 957' FEL, SEC. 28
BOTTOM HOLE: 50' FNL, 2411' FEL, SEC. 16
BARCLAY FARMS 28-2HZ
SURFACE: 319' FNL, 942' FEL, SEC. 28
BOTTOM HOLE: 50' FNL, 2000' FEL, SEC. 16
BARCLAY FARMS 28-3HZ
SURFACE: 320' FNL, 927' FEL, SEC. 28
BOTTOM HOLE: 50' FNL, 1587' FEL, SEC. 16
BARCLAY FARMS 28-4HZ
SURFACE: 320' FNL, 912' FEL, SEC. 28
BOTTOM HOLE: 49' FNL, 1199' FEL, SEC. 16

BARCLAY FARMS 28-5HZ
SURFACE: 320' FNL, 897' FEL, SEC. 28
BOTTOM HOLE: 50' FNL, 787' FEL, SEC. 16
BARCLAY FARMS 28-6HZ
SURFACE: 320' FNL, 882' FEL, SEC. 28
BOTTOM HOLE: 50' FNL, 383' FEL, SEC. 16
BARCLAY FARMS 28-7HZ
SURFACE: 321' FNL, 867' FEL, SEC. 28
BOTTOM HOLE: 50' FNL, 351' FEL, SEC. 28
BARCLAY FARMS 28-8HZ
SURFACE: 321' FNL, 852' FEL, SEC. 28
BOTTOM HOLE: 50' FNL, 57' FEL, SEC. 16

NOTES:

- ▲ INDICATES SECTION CORNER.
- INDICATES CALCULATED CORNER.
- BASIS OF BEARING DERIVED FROM COLORADO COORDINATE SYSTEM OF 1983 NORTH ZONE.
- ALL MEASURED DISTANCES ARE GRID.
- COMBINED SCALE FACTOR: .99972278 CALCULATED FROM THE W. 1/4 CORNER OF SECTION 21, T3N, R66W.
- SEE ADDENDUM TO WELL LOCATION CERTIFICATE FOR EXISTING IMPROVEMENTS WITHIN 500' OF THE WELL PAD.
- WELL FOOTAGES ARE MEASURED AT RIGHT ANGLES TO THE SECTION LINES.



WELL PAD - BARCLAY FARMS 37-28HZ

MULTI-WELL PLAN
BARCLAY FARMS 28-1HZ, BARCLAY FARMS 28-2HZ,
BARCLAY FARMS 28-3HZ, BARCLAY FARMS 28-4HZ,
BARCLAY FARMS 28-5HZ, BARCLAY FARMS 28-6HZ,
BARCLAY FARMS 28-7HZ & BARCLAY FARMS 28-8HZ
LOCATED IN SECTIONS 16, 21 & 28
T3N, R66W, 6TH P.M.
WELD COUNTY, COLORADO

**Kerr-McGee Oil &
Gas Onshore L.P.**
1099 18th Street
Denver, Colorado 80202



CONSULTING, LLC

SHERIDAN OFFICE
1095 Saberton Avenue
Sheridan, Wyoming 82801
Phone 307-674-0609

LOVELAND OFFICE
6706 North Franklin Avenue
Loveland, Colorado 80538
Phone 970-776-4331

DRAFTED BY:	LMO	CHECKED BY:	RKF	SHEET NO:
DATE DRAFTED:	10/17/18	DATE SURVEYED:	9/26/18	1C
REVISED:		FILE NAME:	18-95	1C OF 1