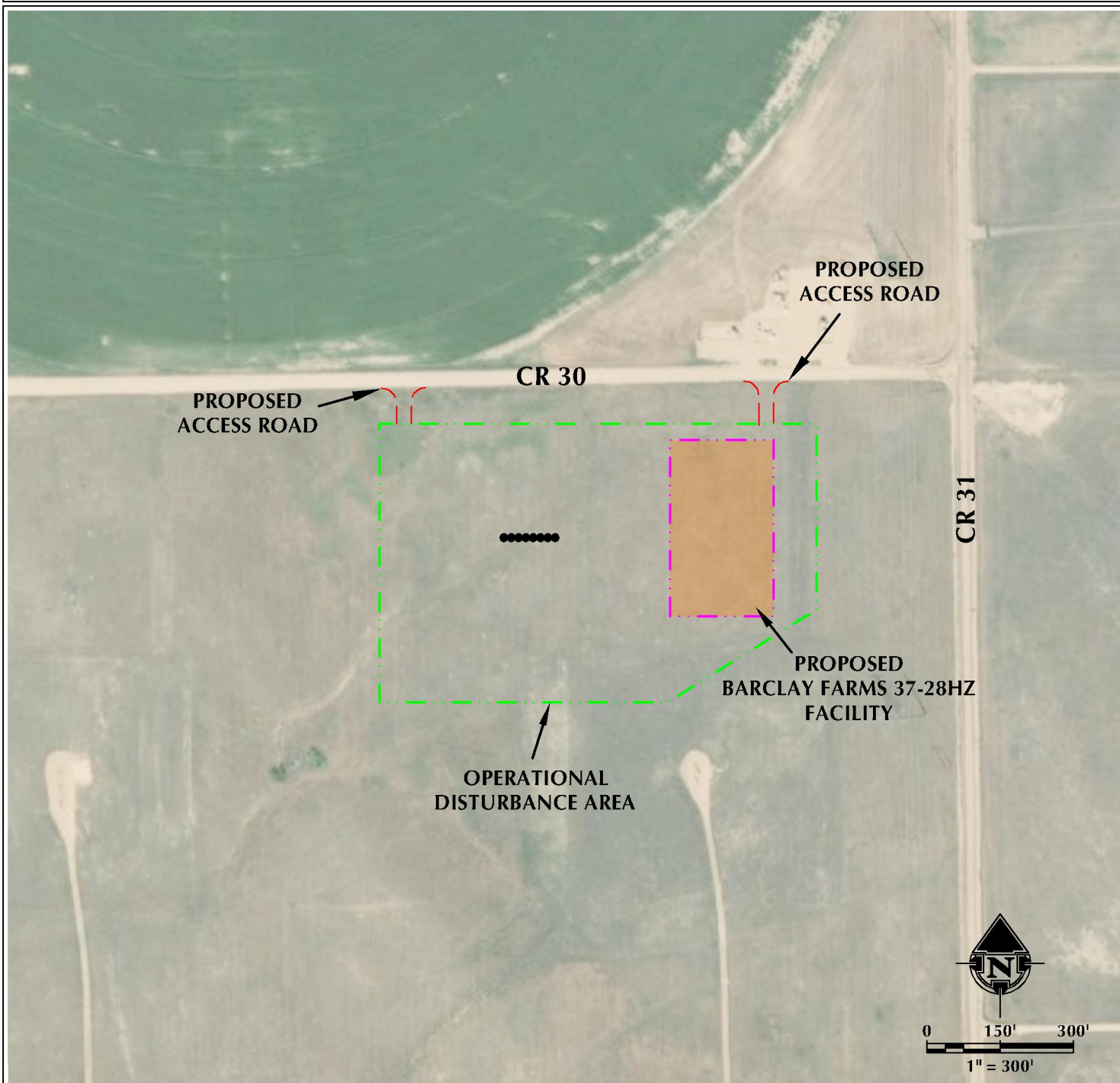


BARCLAY FARMS 37-28HZ ACCESS MAP

NE1/4 NE1/4 SECTION 28, TOWNSHIP 3 NORTH, RANGE 66 WEST, 6TH P.M.



LEGEND

- PROPOSED WELL
- - - ACCESS
- PROPOSED FACILITY
- - - DISTURBANCE BOUNDARY

ACCESS WEST

INTERSECTION OF
ACCESS ROAD AND CR 30
LATITUDE: 40.203243°
LONGITUDE: -104.777105°

ACCESS EAST

INTERSECTION OF
ACCESS ROAD AND CR 30
LATITUDE: 40.203265°
LONGITUDE: -104.774447°



609 CONSULTING, LLC
LOVELAND OFFICE
6706 North Franklin Avenue
Loveland, Colorado 80538
Phone: 970-776-4331

SHERIDAN OFFICE
1095 Saberton Avenue
Sheridan, Wyoming 82801
Phone: 307-674-0609

DATE SURVEYED: 9/26/18
DATE: 10/18/18
DRAFTER: DJD
REVISED:

DATA SOURCES:
- AERIAL COURTESY OF ESRI, INC.

PREPARED FOR:
Kerr-McGee Oil & Gas Onshore L.P.