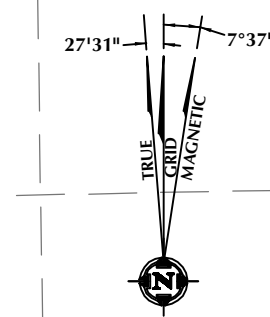


SURFACE LOCATION: NAD 83
 GROUND ELEVATION= 4981.7'
 LATITUDE= 40.204703°
 LONGITUDE= -104.790394°
 LATITUDE= 40°12'16.931"
 LONGITUDE= -104°47'25.418"
 HEEL LOCATION: NAD 83
 LATITUDE= 40.203353°
 LONGITUDE= -104.782986°
 LATITUDE= 40°12'12.071"
 LONGITUDE= -104°46'58.751"
 BOTTOM HOLE LOCATION: NAD 83
 LATITUDE= 40.231992°
 LONGITUDE= -104.782995°
 LATITUDE= 40°13'55.171"
 LONGITUDE= -104°46'58.782"

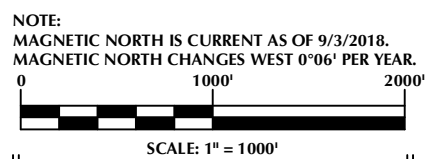


CERTIFICATE OF SURVEYOR:

THIS IS TO CERTIFY THAT THE ABOVE PLAT WAS PREPARED FROM FIELD NOTES OF ACTUAL SURVEYS MADE BY ME OR UNDER MY SUPERVISION AND THAT THE SAID NOTES ARE TRUE AND CORRECT TO THE BEST OF MY KNOWLEDGE AND BELIEF. THIS CERTIFICATE DOES NOT REPRESENT A LAND SURVEY THAT OR IMPROVEMENT SURVEY PLAT AS DEFINED BY C.R.S. 38-50-102 AND CANNOT BE RELIED UPON TO DETERMINE OWNERSHIP.

Randall K. French
 38512
 PROFESSIONAL LAND SURVEYOR
 9/25/18
 RANDALL K. FRENCH
 PROFESSIONAL LAND SURVEYOR
 COLORADO REGISTRATION NUMBER 38512

NOTICE: ACCORDING TO COLORADO STATE LAW YOU MUST COMMENCE LEGAL ACTION BASED UPON ANY DEFECT IN THIS SURVEY WITHIN THREE YEARS AFTER YOU FIRST DISCOVER SUCH DEFECT. IN NO EVENT MAY ANY ACTION BASED UPON ANY DEFECT IN THIS SURVEY BE COMMENCED MORE THAN TEN YEARS FROM THE DATE ON THE CERTIFICATION SHOWN HEREON.



NOTES:

- ▲ INDICATES SECTION CORNER.
- INDICATES CALCULATED CORNER.
- ELEVATION BASED ON NAVD88 (GEOID12B).
- BASIS OF BEARING DERIVED FROM COLORADO COORDINATE SYSTEM OF 1983 NORTH ZONE.
- ALL MEASURED DISTANCES ARE GRID.
- COMBINED SCALE FACTOR: .99972278 CALCULATED FROM THE W. 1/4 CORNER OF SECTION 21, T3N, R66W.
- OPERATOR: ROB WILSON / PDOP = 1.9.
- SEE ADDENDUM TO WELL LOCATION CERTIFICATE FOR EXISTING IMPROVEMENTS WITHIN 500' OF THE WELL PAD.
- WELL FOOTAGES ARE MEASURED AT RIGHT ANGLES TO THE SECTION LINES.
- THE BOTTOM OF HOLE BEARS N00°28'35"W, 10433' FROM THE HEEL LOCATION.

WELL PAD - SARCHET 35-21HZ

SARCHET 21-7HZ
 WELL LOCATION CERTIFICATE
 565' FSL & 339' FWL SWSW (SURFACE)
 50' FSL & 2404' FWL (SESW) (HEEL)
 LOCATED IN SECTION 21
 49' FNL & 2495' FWL NENW (BOTTOM)
 LOCATED IN SECTION 16
 T3N, R66W, 6TH P.M.
 WELD COUNTY, COLORADO

Kerr-McGee Oil & Gas Onshore L.P.
 1099 18th Street
 Denver, Colorado 80202



CONSULTING, LLC

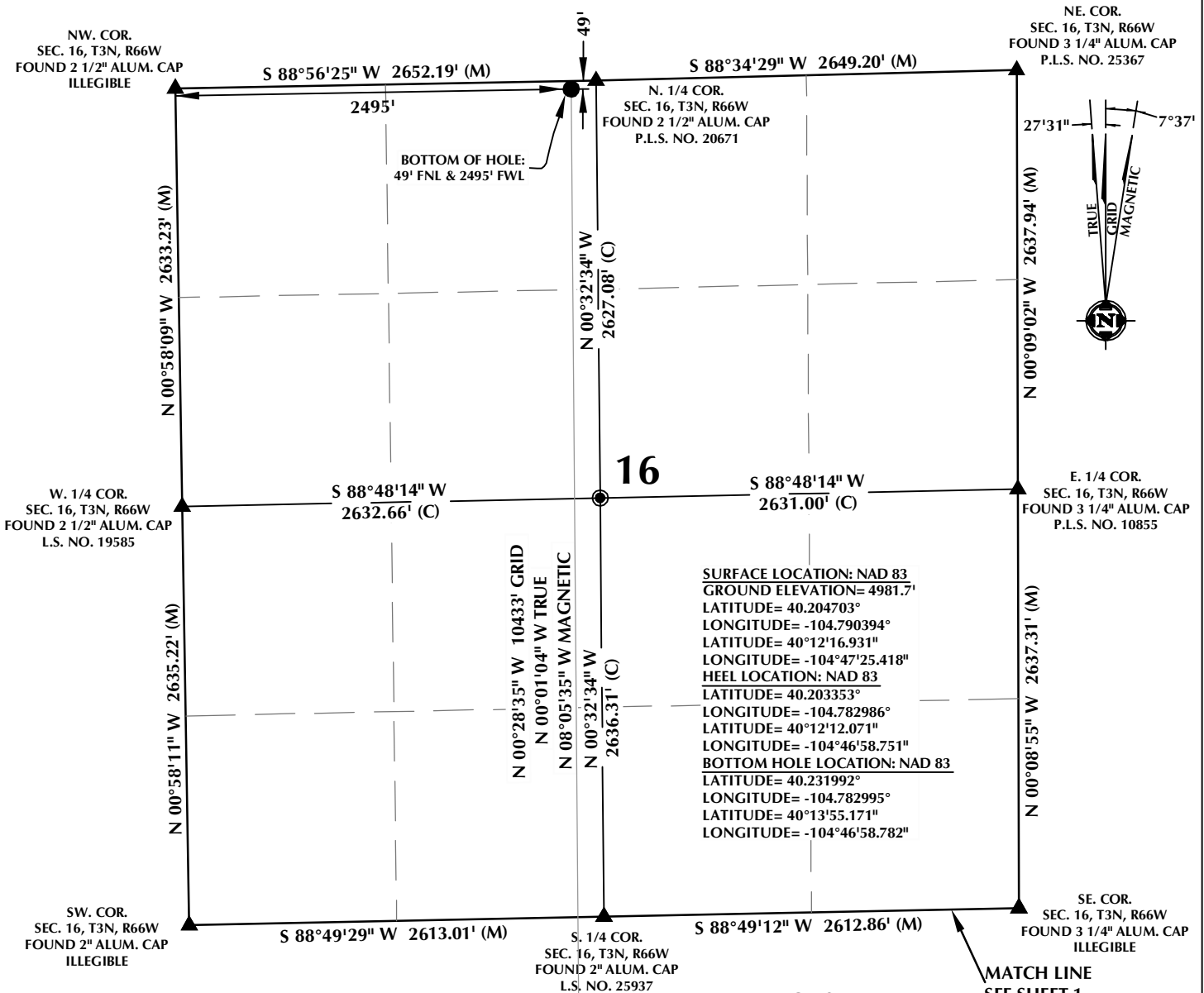
SHERIDAN OFFICE
 1095 Saberton Avenue
 Sheridan, Wyoming 82801
 Phone 307-674-0609

LOVELAND OFFICE
 6706 North Franklin Avenue
 Loveland, Colorado 80538
 Phone 970-776-4331

DRAFTED BY: LMO	CHECKED BY: RKF	SHEET NO: 1 1 OF 2
DATE DRAFTED: 9/25/18	DATE SURVEYED: 9/3/18	
REVISED:	FILE NAME: 17-222	

K:\AMADARKO\2017\222_MILES_MILLER_T3N_R66W_SEC_20\PLATS\SARCHET_35-21HZ\PLAT.dwg 9/25/2018 10:29:25 AM, lba

T3N, R66W



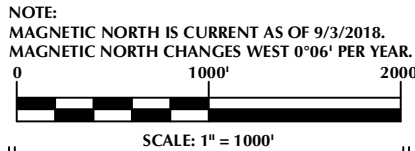
CERTIFICATE OF SURVEYOR:

THIS IS TO CERTIFY THAT THE ABOVE PLAT WAS PREPARED FROM FIELD NOTES OF ACTUAL SURVEYS MADE BY ME OR UNDER MY SUPERVISION AND THAT THE SAME ARE TRUE AND CORRECT TO THE BEST OF MY KNOWLEDGE AND BELIEF. THIS CERTIFICATE DOES NOT REPRESENT A LAND SURVEY PLAT OR IMPROVEMENT SURVEY PLAT AS DEFINED BY C.R.S. 38-5-102 AND CANNOT BE RELIED UPON TO DETERMINE OWNERSHIP.

Randall K. French
 RANDALL K. FRENCH
 PROFESSIONAL LAND SURVEYOR
 COLORADO REGISTRATION NUMBER 38512

9/25/18
 RANDALL K. FRENCH
 PROFESSIONAL LAND SURVEYOR
 COLORADO REGISTRATION NUMBER 38512

NOTICE:
 ACCORDING TO COLORADO STATE LAW YOU MUST COMMENCE LEGAL ACTION BASED UPON ANY DEFECT IN THIS SURVEY WITHIN THREE YEARS AFTER YOU FIRST DISCOVER SUCH DEFECT. IN NO EVENT MAY ANY ACTION BASED UPON ANY DEFECT IN THIS SURVEY BE COMMENCED MORE THAN TEN YEARS FROM THE DATE ON THE CERTIFICATION SHOWN HEREON.



NOTES:

- ▲ INDICATES SECTION CORNER.
- INDICATES CALCULATED CORNER.
- ELEVATION BASED ON NAVD88 (GEOID12B).
- BASIS OF BEARING DERIVED FROM COLORADO COORDINATE SYSTEM OF 1983 NORTH ZONE.
- ALL MEASURED DISTANCES ARE GRID.
- COMBINED SCALE FACTOR: .99972278 CALCULATED FROM THE W. 1/4 CORNER OF SECTION 21, T3N, R66W.
- OPERATOR: ROB WILSON / PDOP = 1.9.
- SEE ADDENDUM TO WELL LOCATION CERTIFICATE FOR EXISTING IMPROVEMENTS WITHIN 500' OF THE WELL PAD.
- WELL FOOTAGES ARE MEASURED AT RIGHT ANGLES TO THE SECTION LINES.
- THE BOTTOM OF HOLE BEARS N00°28'35"W, 10433' FROM THE HEEL LOCATION.

WELL PAD - SARCHET 35-21HZ

SARCHET 21-7HZ
 WELL LOCATION CERTIFICATE
 565' FSL & 339' FWL SWSW (SURFACE)
 50' FSL & 2404' FWL (SESW) (HEEL)
 LOCATED IN SECTION 21
 49' FNL & 2495' FWL NENW (BOTTOM)
 LOCATED IN SECTION 16
 T3N, R66W, 6TH P.M.
 WELD COUNTY, COLORADO

Kerr-McGee Oil & Gas Onshore L.P.
 1099 18th Street
 Denver, Colorado 80202



CONSULTING, LLC

SHERIDAN OFFICE
 1095 Saberton Avenue
 Sheridan, Wyoming 82801
 Phone 307-674-0609

LOVELAND OFFICE
 6706 North Franklin Avenue
 Loveland, Colorado 80538
 Phone 970-776-4331

DRAFTED BY: LMO	CHECKED BY: RKF	SHEET NO: 2 2 OF 2
DATE DRAFTED: 9/25/18	DATE SURVEYED: 9/3/18	
REVISED:	FILE NAME: 17-222	