



# Kerr-McGee Oil & Gas Onshore LP

A subsidiary of Anadarko Petroleum Corporation

1099 18<sup>th</sup> Street  
Denver, CO 80202  
720-929-6000

December 4, 2018

Julie Murphy  
Director, Colorado Oil and Gas Conservation Commission  
Department of Natural Resources  
The Chancery Building  
1120 Lincoln Street, Suite 801  
Denver, CO 80203

Re: **30 Day Certification Letter - 318A.e**  
SARCHET 21-2HZ (Doc No. 401782168)  
Township 3 North, Range 66 West  
Section 21: SWSW  
Unit Acreage: 400 Acres  
Proposed Spacing Unit:  
03N66W SEC 09: SWSW;  
03N66W SEC 16: W2W2;  
03N66W SEC 21: W2W2;  
03N66W SEC 28: NWNW  
Weld County, Colorado

Dear Director Murphy:

Kerr-McGee Oil and Gas Onshore LP (“KMG”) hereby certifies that a thirty (30) day notice has been given by certified mail to all mineral owners in the proposed wellbore spacing unit. We have not received any objections to this spacing unit or location. KMG hereby respectfully requests approval of this well.

If you have any questions or issues regarding this permit, please contact me at (720) 929-3242.

Sincerely,

**Kerr-McGee Oil and Gas Onshore LP**

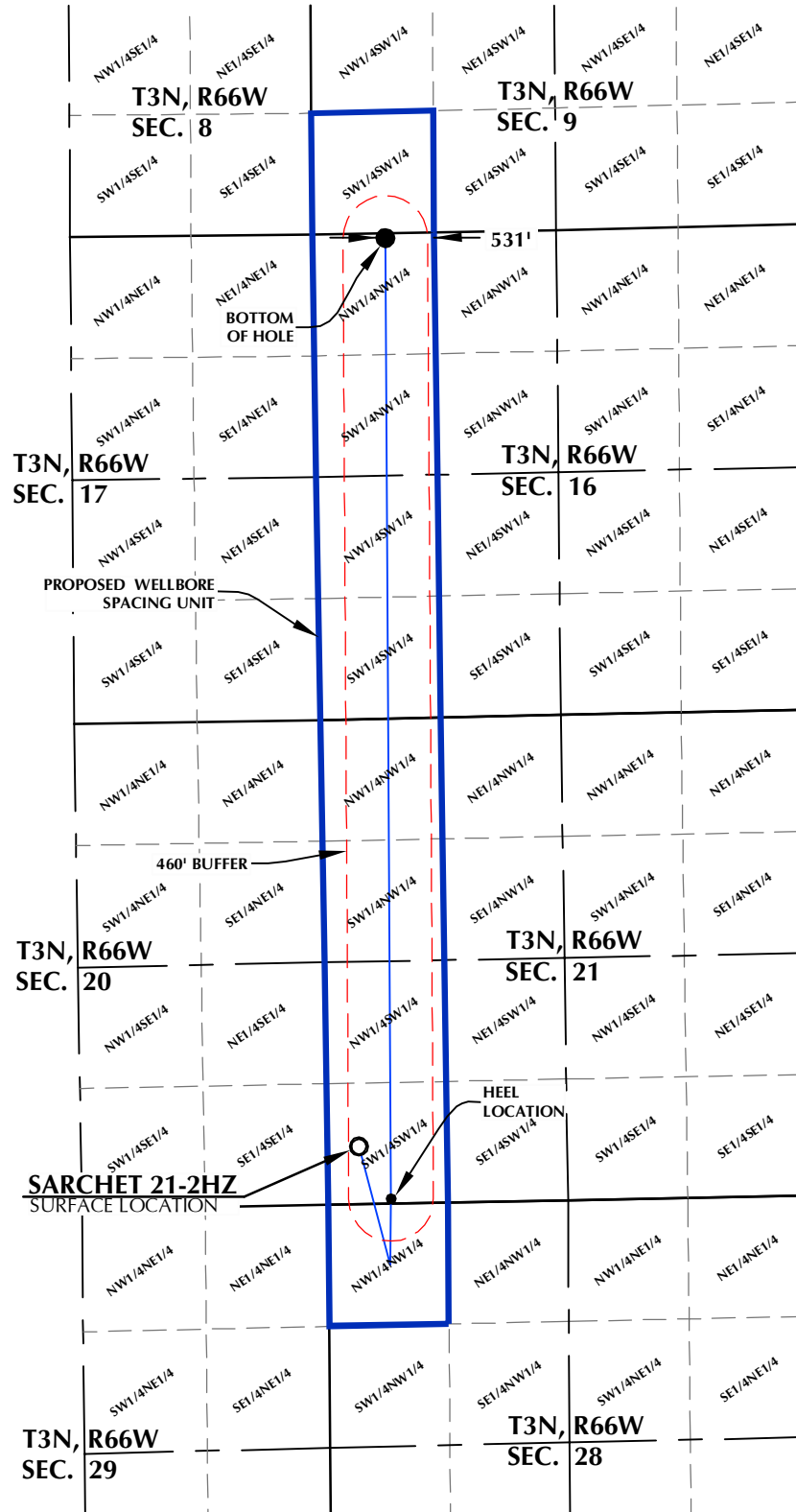
A handwritten signature in black ink, appearing to read 'EH'.

Erin Hampe  
Regulatory Analyst

Enclosure

DISTANCE FROM COMPLETED  
PORTION OF WELLBORE TO  
NEAREST UNIT BOUNDARY= 531'

# SARCHET 21-2HZ WELLBORE SPACING UNIT



**SURFACE LOCATION: NAD 83**  
GROUND ELEVATION= 4983.4'  
LATITUDE= 40.204868°  
LONGITUDE= -104.790392°  
LATITUDE= 40°12'17.524"  
LONGITUDE= -104°47'25.412"  
**HEEL LOCATION: NAD 83**  
LATITUDE= 40.203300°  
LONGITUDE= -104.789155°  
LATITUDE= 40°12'11.880"  
LONGITUDE= -104°47'20.957"  
**BOTTOM HOLE LOCATION: NAD 83**  
LATITUDE= 40.231940°  
LONGITUDE= -104.789082°  
LATITUDE= 40°13'54.984"  
LONGITUDE= -104°47'20.695"

**NOTES:**

1. DRAWING LATITUDE AND LONGITUDE COORDINATES ARE NAD 83 (2011)(EPOCH:2010).
2. ELEVATION BASED ON NAVD88 (GEOID12B).
3. BASIS OF BEARING DERIVED FROM COLORADO COORDINATE SYSTEM OF 1983 NORTH ZONE.
4. ALL MEASURED DISTANCES ARE GRID. COMBINED SCALE FACTOR: .99972278 CALCULATED FROM THE W. 1/4 CORNER OF SECTION 21, T3N, R66W.

**WELL PAD - SARCHET 35-21HZ**

SARCHET 21-2HZ  
WELLBORE SPACING UNIT  
625' FSL & 341' FWL SWSW (SURFACE)  
50' FSL & 681' FWL (SWSW) (HEEL)  
LOCATED IN SECTION 21  
51' FNL & 795' FWL NWNW (BOTTOM)  
LOCATED IN SECTION 16  
T3N, R66W, 6TH P.M.  
WELD COUNTY, COLORADO

**Kerr-McGee Oil &  
Gas Onshore L.P.**  
1099 18th Street  
Denver, Colorado 80202



**CONSULTING, LLC**

**SHERIDAN OFFICE**  
1095 Saberton Avenue  
Sheridan, Wyoming 82801  
Phone 307-674-0609

**LOVELAND OFFICE**  
6706 North Franklin Avenue  
Loveland, Colorado 80538  
Phone 970-776-4331

DRAFTED BY:	LMO	CHECKED BY:	RKF
DATE DRAFTED:	9/25/18	DATE SURVEYED:	9/3/18
REVISED:		FILE NAME:	17-222