



Kerr-McGee Oil & Gas Onshore LP

A subsidiary of Anadarko Petroleum Corporation

1099 18th Street
Denver, CO 80202
720-929-6000

December 4, 2018

Julie Murphy
Director, Colorado Oil and Gas Conservation Commission
Department of Natural Resources
The Chancery Building
1120 Lincoln Street, Suite 801
Denver, CO 80203

Re: 30 Day Certification Letter - 318A.e

SARCHET 21-1HZ (Doc No. 401782167)

Township 3 North, Range 66 West

Section 21: SWSW

Unit Acreage: 800 Acres

Proposed Spacing Unit:

03N66W SEC 08: SESE;

03N66W SEC 09: SWSW;

03N66W SEC 16: W2W2;

03N66W SEC 17: E2E2;

03N66W SEC 20: E2E2;

03N66W SEC 21: W2W2;

03N66W SEC 28: NWNW;

03N66W SEC 29: NENE

Weld County, Colorado

Dear Director Murphy:

Kerr-McGee Oil and Gas Onshore LP (“KMG”) hereby certifies that a thirty (30) day notice has been given by certified mail to all mineral owners in the proposed wellbore spacing unit. We have not received any objections to this spacing unit or location. KMG hereby respectfully requests approval of this well.

If you have any questions or issues regarding this permit, please contact me at (720) 929-3242.

Sincerely,

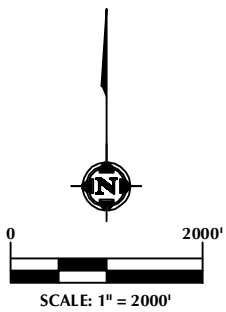
Kerr-McGee Oil and Gas Onshore LP

Erin Hampe
Regulatory Analyst

Enclosure

DISTANCE FROM COMPLETED
PORTION OF WELLBORE TO
NEAREST UNIT BOUNDARY= 991'

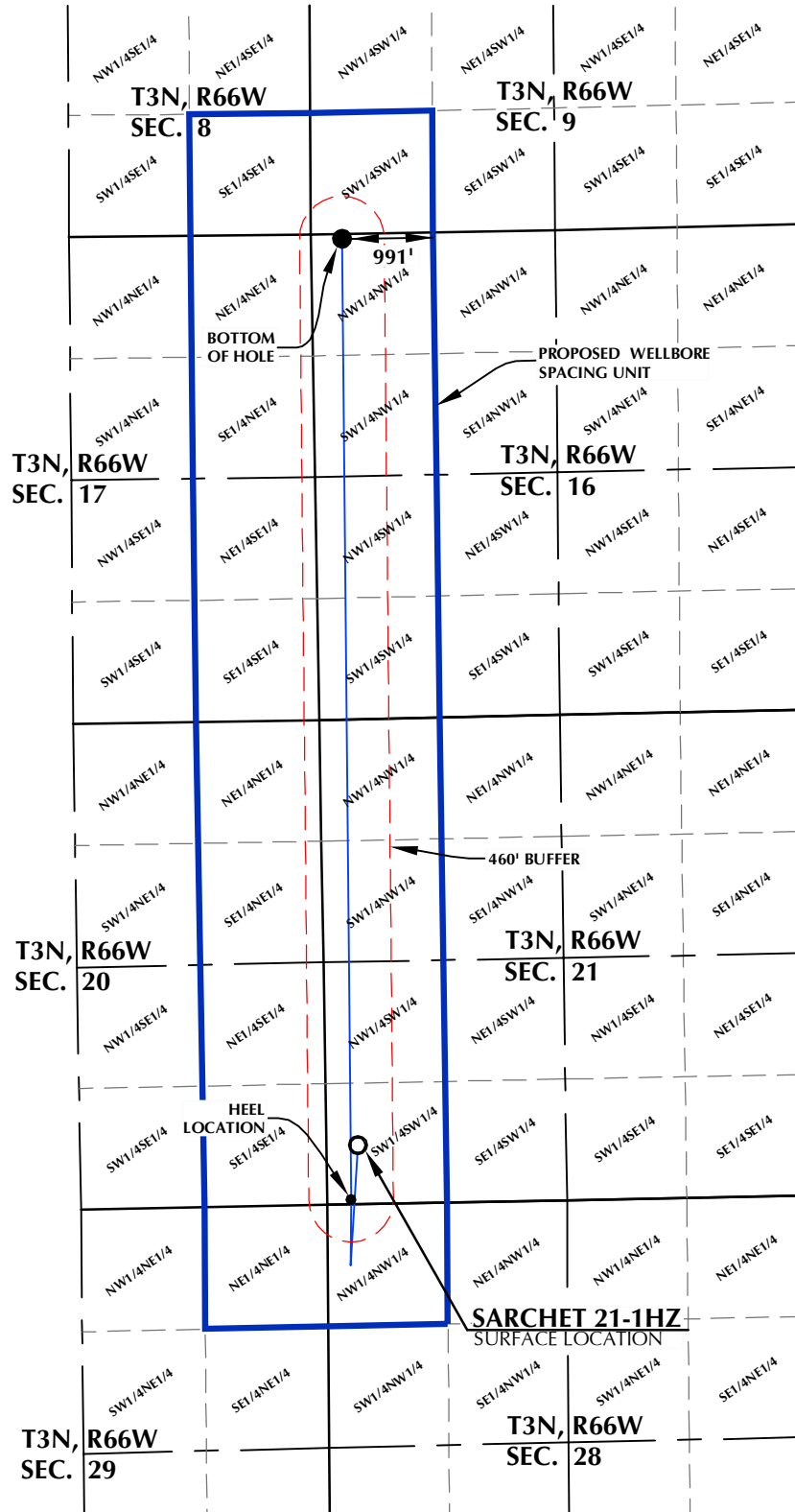
SARCHET 21-1HZ WELLBORE SPACING UNIT



SURFACE LOCATION: NAD 83
GROUND ELEVATION= 4984.0'
LATITUDE= 40.204909°
LONGITUDE= -104.790392°
LATITUDE= 40°12'17.672"
LONGITUDE= -104°47'25.411"
HEEL LOCATION: NAD 83
LATITUDE= 40.203287°
LONGITUDE= -104.790672°
LATITUDE= 40°12'11.833"
LONGITUDE= -104°47'26.421"
BOTTOM HOLE LOCATION: NAD 83
LATITUDE= 40.231930°
LONGITUDE= -104.790731°
LATITUDE= 40°13'54.948"
LONGITUDE= -104°47'26.632"

NOTES:

1. DRAWING LATITUDE AND LONGITUDE COORDINATES ARE NAD 83 (2011)(EPOCH:2010).
2. ELEVATION BASED ON NAVD88 (GEOID12B).
3. BASIS OF BEARING DERIVED FROM COLORADO COORDINATE SYSTEM OF 1983 NORTH ZONE.
4. ALL MEASURED DISTANCES ARE GRID.
COMBINED SCALE FACTOR: .99972278
CALCULATED FROM THE W. 1/4 CORNER OF SECTION 21, T3N, R66W.



WELL PAD - SARCHET 35-21HZ

SARCHET 21-1HZ
WELLBORE SPACING UNIT
640' FSL & 341' FWL SWSW (SURFACE)
50' FSL & 257' FWL (SWSW) (HEEL)
LOCATED IN SECTION 21
49' FNL & 335' FWL NWNW (BOTTOM)
LOCATED IN SECTION 16
T3N, R66W, 6TH P.M.
WELD COUNTY, COLORADO

**Kerr-McGee Oil &
Gas Onshore L.P.**
1099 18th Street
Denver, Colorado 80202



CONSULTING, LLC

SHERIDAN OFFICE
1095 Saberton Avenue
Sheridan, Wyoming 82801
Phone 307-674-0609

LOVELAND OFFICE
6706 North Franklin Avenue
Loveland, Colorado 80538
Phone 970-776-4331

DRAFTED BY:	LMO	CHECKED BY:	RKF
DATE DRAFTED:	9/25/18	DATE SURVEYED:	9/3/18
REVISED:		FILE NAME:	17-222