

SRC ENERGY

WELD COUNTY (NAD83, TRUE NORTH)

5N-66W-29 SANFORD 21-29 PAD

SANFORD 40N-27B-XR

Wellbore #1

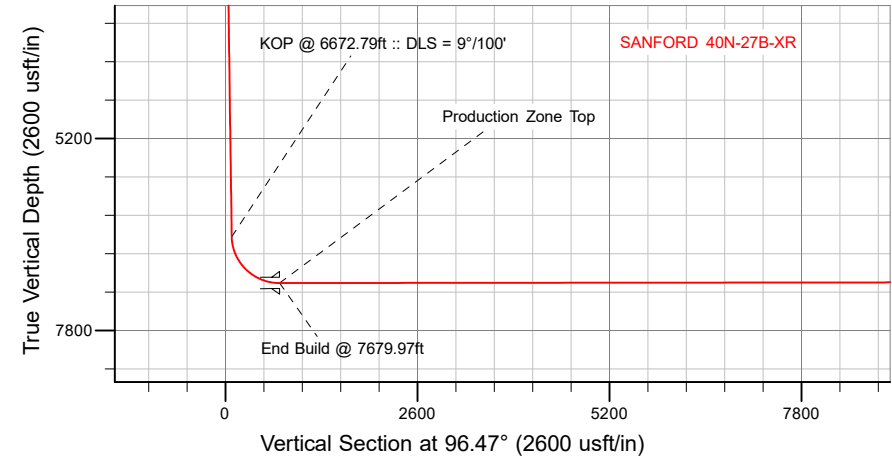
Plan: Design #1

Standard Planning Report

25 October, 2018

SRC ENERGY

CASING DETAILS		
TVD	MD	Name
1800.00	1828.43	9 5/8"
7159.00	7679.97	Production Zone Top



SECTION DETAILS										
Sec	MD	Inc	Azi	TVD	+N/-S	+E/-W	Dleg	TFace	VSect	Target
1	0.00	0.00	0.00	0.00	0.00	0.00	0.00	0.00	0.00	
2	200.00	0.00	0.00	200.00	0.00	0.00	0.00	0.00	0.00	
3	821.00	12.42	182.85	816.15	-66.96	-3.33	2.00	182.85	4.23	
4	6672.79	12.42	182.85	6530.99	-1323.99	-65.91	0.00	0.00	83.65	
5	7679.97	90.07	90.15	7159.00	-1464.01	571.04	9.00	-92.62	732.32	
6	20320.42	90.07	90.15	7144.00	-1497.72	13211.44	0.00	0.00	13296.06	Sanford 40N-27B-XR_BHL

WELLBORE TARGET DETAILS (LAT/LONG)					
Name	TVD	+N/-S	+E/-W	Latitude	Longitude
Sanford 40N-27B-XR BPZ	0.00	-1497.41	13111.41	40.371296	-104.757852
Sanford 40N-27B-XR_SHL	0.00	0.00	0.00	40.375416	-104.804909
Sanford 40N-27B-XR_BHL	7144.00	-1497.72	13211.44	40.371295	-104.757493

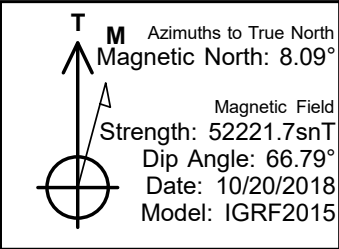
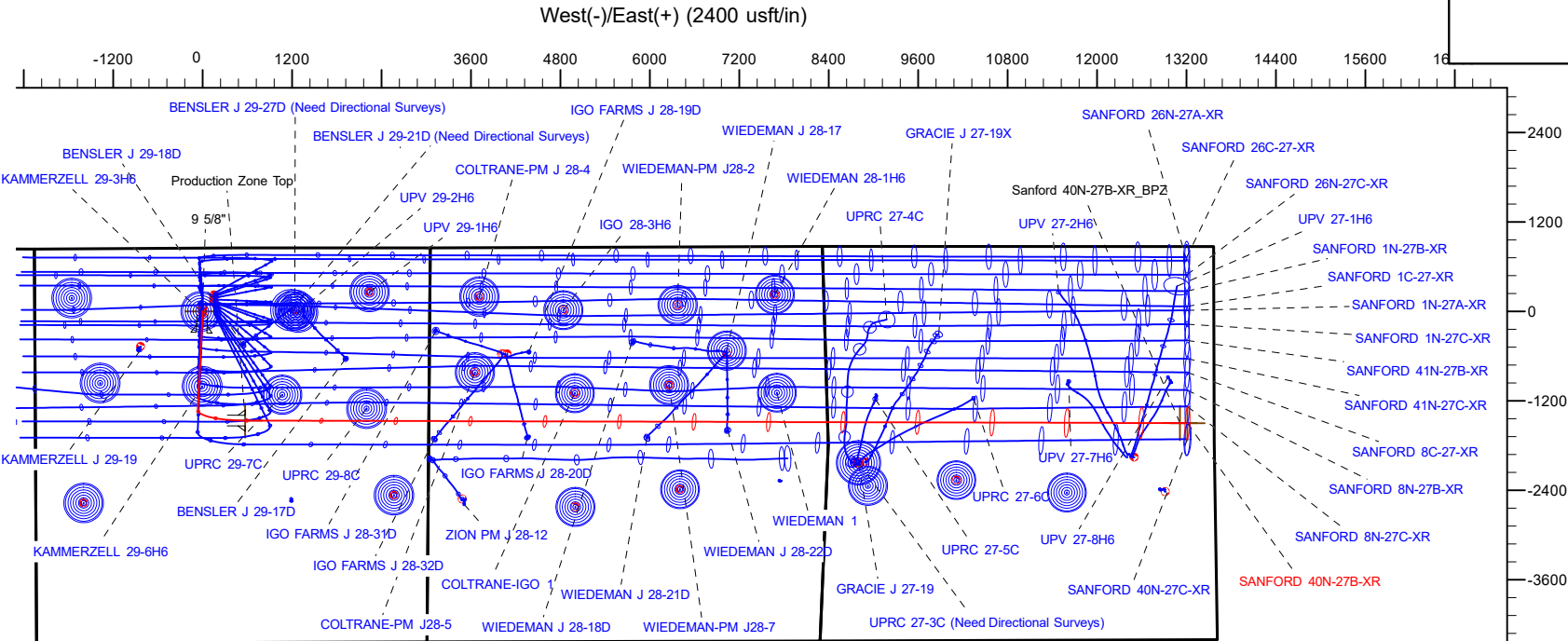
SHL
851' FNL
2242' FWL

LP
2318' FNL
2464' FEL
40.371398° Lat
-104.802866° Long

BPZ
2368' FNL
460' FEL

BHL
2368' FNL
360' FEL

WELL DETAILS: SANFORD 40N-27B-XR
GL = 4905'
RKB = 4' @ 4909.00usft (RIG)
Plan: Design #1 (SANFORD 40N-27B-XR/Wellbore #1)
Date: 10/25/2015



Hewlett-Packard

Planning Report

Database:	EDM 5000.14 Single User Db	Local Co-ordinate Reference:	Well SANFORD 40N-27B-XR
Company:	SRC ENERGY	TVD Reference:	RKB = 4' @ 4909.00usft (RIG)
Project:	WELD COUNTY (NAD83, TRUE NORTH)	MD Reference:	RKB = 4' @ 4909.00usft (RIG)
Site:	5N-66W-29 SANFORD 21-29 PAD	North Reference:	True
Well:	SANFORD 40N-27B-XR	Survey Calculation Method:	Minimum Curvature
Wellbore:	Wellbore #1		
Design:	Design #1		

Project	WELD COUNTY (NAD83, TRUE NORTH)		
Map System:	US State Plane 1983	System Datum:	Mean Sea Level
Geo Datum:	North American Datum 1983		
Map Zone:	Colorado Northern Zone		

Site	5N-66W-29 SANFORD 21-29 PAD			
Site Position:		Northing:	1,380,603.61 usft	Latitude: 40.376075
From:	Lat/Long	Easting:	3,193,654.99 usft	Longitude: -104.804914
Position Uncertainty:	0.00 usft	Slot Radius:	13-3/16 "	Grid Convergence: 0.45 °

Well	SANFORD 40N-27B-XR					
Well Position	+N/-S	-240.08 usft	Northing:	1,380,363.55 usft	Latitude:	40.375416
	+E/-W	1.39 usft	Easting:	3,193,658.26 usft	Longitude:	-104.804909
Position Uncertainty		3.28 usft	Wellhead Elevation:		Ground Level:	4,905.00 usft

Wellbore	Wellbore #1				
Magnetics	Model Name	Sample Date	Declination (°)	Dip Angle (°)	Field Strength (nT)
	IGRF2015	10/20/2018	8.09	66.79	52,221.67022364

Design	Design #1			
Audit Notes:				
Version:		Phase:	PLAN	Tie On Depth: 0.00
Vertical Section:	Depth From (TVD) (usft)	+N/-S (usft)	+E/-W (usft)	Direction (°)
	0.00	0.00	0.00	96.47

Plan Survey Tool Program	Date	10/25/2018		
Depth From (usft)	Depth To (usft)	Survey (Wellbore)	Tool Name	Remarks
1	0.00	1,800.00	Design #1 (Wellbore #1)	SRC Energy_ISCWSA REV 2 Fixed:v2:crustal field declinatio
2	1,800.00	20,320.42	Design #1 (Wellbore #1)	SRC Energy_ISCWSA REV 2 Fixed:v2:Rockies, crustal dec +

Plan Sections										
Measured Depth (usft)	Inclination (°)	Azimuth (°)	Vertical Depth (usft)	+N/-S (usft)	+E/-W (usft)	Dogleg Rate (°/100usft)	Build Rate (°/100usft)	Turn Rate (°/100usft)	TFO (°)	Target
0.00	0.00	0.00	0.00	0.00	0.00	0.00	0.00	0.00	0.00	
200.00	0.00	0.00	200.00	0.00	0.00	0.00	0.00	0.00	0.00	
821.00	12.42	182.85	816.15	-66.96	-3.33	2.00	2.00	0.00	182.85	
6,672.79	12.42	182.85	6,530.99	-1,323.99	-65.91	0.00	0.00	0.00	0.00	
7,679.97	90.07	90.15	7,159.00	-1,464.01	571.04	9.00	7.71	-9.20	-92.62	
20,320.42	90.07	90.15	7,144.00	-1,497.72	13,211.44	0.00	0.00	0.00	0.00	Sanford 40N-27B-XR

Hewlett-Packard

Planning Report

Database:	EDM 5000.14 Single User Db	Local Co-ordinate Reference:	Well SANFORD 40N-27B-XR
Company:	SRC ENERGY	TVD Reference:	RKB = 4' @ 4909.00usft (RIG)
Project:	WELD COUNTY (NAD83, TRUE NORTH)	MD Reference:	RKB = 4' @ 4909.00usft (RIG)
Site:	5N-66W-29 SANFORD 21-29 PAD	North Reference:	True
Well:	SANFORD 40N-27B-XR	Survey Calculation Method:	Minimum Curvature
Wellbore:	Wellbore #1		
Design:	Design #1		

Planned Survey									
Measured Depth (usft)	Inclination (°)	Azimuth (°)	Vertical Depth (usft)	+N/-S (usft)	+E/-W (usft)	Vertical Section (usft)	Dogleg Rate (°/100usft)	Build Rate (°/100usft)	Turn Rate (°/100usft)
0.00	0.00	0.00	0.00	0.00	0.00	0.00	0.00	0.00	0.00
100.00	0.00	0.00	100.00	0.00	0.00	0.00	0.00	0.00	0.00
200.00	0.00	0.00	200.00	0.00	0.00	0.00	0.00	0.00	0.00
Begin Nudge @ 200.00ft									
300.00	2.00	182.85	299.98	-1.74	-0.09	0.11	2.00	2.00	0.00
400.00	4.00	182.85	399.84	-6.97	-0.35	0.44	2.00	2.00	0.00
500.00	6.00	182.85	499.45	-15.67	-0.78	0.99	2.00	2.00	0.00
600.00	8.00	182.85	598.70	-27.85	-1.39	1.76	2.00	2.00	0.00
700.00	10.00	182.85	697.47	-43.47	-2.16	2.75	2.00	2.00	0.00
800.00	12.00	182.85	795.62	-62.53	-3.11	3.95	2.00	2.00	0.00
821.00	12.42	182.85	816.15	-66.96	-3.33	4.23	2.00	2.00	0.00
Hold Tangent @ 821.00ft									
900.00	12.42	182.85	893.30	-83.93	-4.18	5.30	0.00	0.00	0.00
1,000.00	12.42	182.85	990.96	-105.41	-5.25	6.66	0.00	0.00	0.00
1,100.00	12.42	182.85	1,088.62	-126.89	-6.32	8.02	0.00	0.00	0.00
1,200.00	12.42	182.85	1,186.28	-148.37	-7.39	9.37	0.00	0.00	0.00
1,300.00	12.42	182.85	1,283.94	-169.86	-8.46	10.73	0.00	0.00	0.00
1,400.00	12.42	182.85	1,381.60	-191.34	-9.53	12.09	0.00	0.00	0.00
1,500.00	12.42	182.85	1,479.26	-212.82	-10.59	13.45	0.00	0.00	0.00
1,600.00	12.42	182.85	1,576.92	-234.30	-11.66	14.80	0.00	0.00	0.00
1,700.00	12.42	182.85	1,674.58	-255.78	-12.73	16.16	0.00	0.00	0.00
1,800.00	12.42	182.85	1,772.24	-277.26	-13.80	17.52	0.00	0.00	0.00
1,828.43	12.42	182.85	1,800.00	-283.37	-14.11	17.90	0.00	0.00	0.00
9 5/8"									
1,900.00	12.42	182.85	1,869.90	-298.74	-14.87	18.87	0.00	0.00	0.00
2,000.00	12.42	182.85	1,967.56	-320.22	-15.94	20.23	0.00	0.00	0.00
2,100.00	12.42	182.85	2,065.22	-341.70	-17.01	21.59	0.00	0.00	0.00
2,200.00	12.42	182.85	2,162.88	-363.18	-18.08	22.95	0.00	0.00	0.00
2,300.00	12.42	182.85	2,260.54	-384.67	-19.15	24.30	0.00	0.00	0.00
2,400.00	12.42	182.85	2,358.20	-406.15	-20.22	25.66	0.00	0.00	0.00
2,500.00	12.42	182.85	2,455.85	-427.63	-21.29	27.02	0.00	0.00	0.00
2,600.00	12.42	182.85	2,553.51	-449.11	-22.36	28.37	0.00	0.00	0.00
2,700.00	12.42	182.85	2,651.17	-470.59	-23.43	29.73	0.00	0.00	0.00
2,800.00	12.42	182.85	2,748.83	-492.07	-24.50	31.09	0.00	0.00	0.00
2,900.00	12.42	182.85	2,846.49	-513.55	-25.57	32.44	0.00	0.00	0.00
3,000.00	12.42	182.85	2,944.15	-535.03	-26.64	33.80	0.00	0.00	0.00
3,100.00	12.42	182.85	3,041.81	-556.51	-27.70	35.16	0.00	0.00	0.00
3,200.00	12.42	182.85	3,139.47	-577.99	-28.77	36.52	0.00	0.00	0.00
3,300.00	12.42	182.85	3,237.13	-599.48	-29.84	37.87	0.00	0.00	0.00
3,400.00	12.42	182.85	3,334.79	-620.96	-30.91	39.23	0.00	0.00	0.00
3,500.00	12.42	182.85	3,432.45	-642.44	-31.98	40.59	0.00	0.00	0.00
3,600.00	12.42	182.85	3,530.11	-663.92	-33.05	41.94	0.00	0.00	0.00
3,700.00	12.42	182.85	3,627.77	-685.40	-34.12	43.30	0.00	0.00	0.00
3,800.00	12.42	182.85	3,725.43	-706.88	-35.19	44.66	0.00	0.00	0.00
3,900.00	12.42	182.85	3,823.09	-728.36	-36.26	46.02	0.00	0.00	0.00
4,000.00	12.42	182.85	3,920.75	-749.84	-37.33	47.37	0.00	0.00	0.00
4,100.00	12.42	182.85	4,018.41	-771.32	-38.40	48.73	0.00	0.00	0.00
4,200.00	12.42	182.85	4,116.07	-792.80	-39.47	50.09	0.00	0.00	0.00
4,300.00	12.42	182.85	4,213.73	-814.29	-40.54	51.44	0.00	0.00	0.00
4,400.00	12.42	182.85	4,311.39	-835.77	-41.61	52.80	0.00	0.00	0.00
4,500.00	12.42	182.85	4,409.05	-857.25	-42.68	54.16	0.00	0.00	0.00
4,600.00	12.42	182.85	4,506.71	-878.73	-43.75	55.52	0.00	0.00	0.00
4,700.00	12.42	182.85	4,604.37	-900.21	-44.82	56.87	0.00	0.00	0.00

Hewlett-Packard

Planning Report

Database:	EDM 5000.14 Single User Db	Local Co-ordinate Reference:	Well SANFORD 40N-27B-XR
Company:	SRC ENERGY	TVD Reference:	RKB = 4' @ 4909.00usft (RIG)
Project:	WELD COUNTY (NAD83, TRUE NORTH)	MD Reference:	RKB = 4' @ 4909.00usft (RIG)
Site:	5N-66W-29 SANFORD 21-29 PAD	North Reference:	True
Well:	SANFORD 40N-27B-XR	Survey Calculation Method:	Minimum Curvature
Wellbore:	Wellbore #1		
Design:	Design #1		

Planned Survey									
Measured Depth (usft)	Inclination (°)	Azimuth (°)	Vertical Depth (usft)	+N/-S (usft)	+E/-W (usft)	Vertical Section (usft)	Dogleg Rate (°/100usft)	Build Rate (°/100usft)	Turn Rate (°/100usft)
4,800.00	12.42	182.85	4,702.03	-921.69	-45.88	58.23	0.00	0.00	0.00
4,900.00	12.42	182.85	4,799.69	-943.17	-46.95	59.59	0.00	0.00	0.00
5,000.00	12.42	182.85	4,897.35	-964.65	-48.02	60.94	0.00	0.00	0.00
5,100.00	12.42	182.85	4,995.01	-986.13	-49.09	62.30	0.00	0.00	0.00
5,200.00	12.42	182.85	5,092.67	-1,007.61	-50.16	63.66	0.00	0.00	0.00
5,300.00	12.42	182.85	5,190.33	-1,029.10	-51.23	65.02	0.00	0.00	0.00
5,400.00	12.42	182.85	5,287.99	-1,050.58	-52.30	66.37	0.00	0.00	0.00
5,500.00	12.42	182.85	5,385.65	-1,072.06	-53.37	67.73	0.00	0.00	0.00
5,600.00	12.42	182.85	5,483.31	-1,093.54	-54.44	69.09	0.00	0.00	0.00
5,700.00	12.42	182.85	5,580.97	-1,115.02	-55.51	70.44	0.00	0.00	0.00
5,800.00	12.42	182.85	5,678.63	-1,136.50	-56.58	71.80	0.00	0.00	0.00
5,900.00	12.42	182.85	5,776.29	-1,157.98	-57.65	73.16	0.00	0.00	0.00
6,000.00	12.42	182.85	5,873.95	-1,179.46	-58.72	74.52	0.00	0.00	0.00
6,100.00	12.42	182.85	5,971.61	-1,200.94	-59.79	75.87	0.00	0.00	0.00
6,200.00	12.42	182.85	6,069.26	-1,222.43	-60.86	77.23	0.00	0.00	0.00
6,300.00	12.42	182.85	6,166.92	-1,243.91	-61.93	78.59	0.00	0.00	0.00
6,400.00	12.42	182.85	6,264.58	-1,265.39	-62.99	79.94	0.00	0.00	0.00
6,500.00	12.42	182.85	6,362.24	-1,286.87	-64.06	81.30	0.00	0.00	0.00
6,600.00	12.42	182.85	6,459.90	-1,308.35	-65.13	82.66	0.00	0.00	0.00
6,672.79	12.42	182.85	6,530.99	-1,323.99	-65.91	83.65	0.00	0.00	0.00
KOP @ 6672.79ft :: DLS = 9°/100'									
6,700.00	12.55	171.52	6,557.56	-1,329.83	-65.62	84.59	9.00	0.46	-41.65
6,800.00	16.44	138.37	6,654.52	-1,351.19	-54.60	97.95	9.00	3.89	-33.14
6,900.00	23.29	120.90	6,748.60	-1,371.97	-28.18	126.55	9.00	6.85	-17.48
7,000.00	31.21	111.46	6,837.47	-1,391.64	12.99	169.67	9.00	7.92	-9.44
7,100.00	39.56	105.61	6,918.94	-1,409.72	67.89	226.25	9.00	8.35	-5.84
7,200.00	48.11	101.55	6,991.02	-1,425.78	135.17	294.91	9.00	8.55	-4.06
7,300.00	56.77	98.45	7,051.93	-1,439.40	213.17	373.95	9.00	8.66	-3.09
7,400.00	65.50	95.92	7,100.16	-1,450.27	299.97	461.43	9.00	8.72	-2.53
7,500.00	74.26	93.72	7,134.53	-1,458.10	393.44	555.19	9.00	8.76	-2.20
7,600.00	83.04	91.71	7,154.20	-1,462.72	491.28	652.92	9.00	8.78	-2.02
7,679.97	90.07	90.15	7,159.00	-1,464.01	571.04	732.32	9.00	8.79	-1.94
End Build @ 7679.97ft - Production Zone Top									
7,700.00	90.07	90.15	7,158.98	-1,464.06	591.07	752.23	0.00	0.00	0.00
7,800.00	90.07	90.15	7,158.86	-1,464.33	691.07	851.62	0.00	0.00	0.00
7,900.00	90.07	90.15	7,158.74	-1,464.59	791.07	951.01	0.00	0.00	0.00
8,000.00	90.07	90.15	7,158.62	-1,464.86	891.07	1,050.41	0.00	0.00	0.00
8,100.00	90.07	90.15	7,158.50	-1,465.13	991.07	1,149.80	0.00	0.00	0.00
8,200.00	90.07	90.15	7,158.38	-1,465.39	1,091.07	1,249.19	0.00	0.00	0.00
8,300.00	90.07	90.15	7,158.26	-1,465.66	1,191.07	1,348.58	0.00	0.00	0.00
8,400.00	90.07	90.15	7,158.15	-1,465.93	1,291.07	1,447.98	0.00	0.00	0.00
8,500.00	90.07	90.15	7,158.03	-1,466.19	1,391.07	1,547.37	0.00	0.00	0.00
8,600.00	90.07	90.15	7,157.91	-1,466.46	1,491.07	1,646.76	0.00	0.00	0.00
8,700.00	90.07	90.15	7,157.79	-1,466.73	1,591.07	1,746.16	0.00	0.00	0.00
8,800.00	90.07	90.15	7,157.67	-1,466.99	1,691.07	1,845.55	0.00	0.00	0.00
8,900.00	90.07	90.15	7,157.55	-1,467.26	1,791.07	1,944.94	0.00	0.00	0.00
9,000.00	90.07	90.15	7,157.43	-1,467.53	1,891.07	2,044.34	0.00	0.00	0.00
9,100.00	90.07	90.15	7,157.32	-1,467.79	1,991.06	2,143.73	0.00	0.00	0.00
9,200.00	90.07	90.15	7,157.20	-1,468.06	2,091.06	2,243.12	0.00	0.00	0.00
9,300.00	90.07	90.15	7,157.08	-1,468.33	2,191.06	2,342.52	0.00	0.00	0.00
9,400.00	90.07	90.15	7,156.96	-1,468.59	2,291.06	2,441.91	0.00	0.00	0.00
9,500.00	90.07	90.15	7,156.84	-1,468.86	2,391.06	2,541.30	0.00	0.00	0.00
9,600.00	90.07	90.15	7,156.72	-1,469.13	2,491.06	2,640.70	0.00	0.00	0.00
9,700.00	90.07	90.15	7,156.60	-1,469.39	2,591.06	2,740.09	0.00	0.00	0.00

Hewlett-Packard

Planning Report

Database:	EDM 5000.14 Single User Db	Local Co-ordinate Reference:	Well SANFORD 40N-27B-XR
Company:	SRC ENERGY	TVD Reference:	RKB = 4' @ 4909.00usft (RIG)
Project:	WELD COUNTY (NAD83, TRUE NORTH)	MD Reference:	RKB = 4' @ 4909.00usft (RIG)
Site:	5N-66W-29 SANFORD 21-29 PAD	North Reference:	True
Well:	SANFORD 40N-27B-XR	Survey Calculation Method:	Minimum Curvature
Wellbore:	Wellbore #1		
Design:	Design #1		

Planned Survey										
Measured Depth (usft)	Inclination (°)	Azimuth (°)	Vertical Depth (usft)	+N/-S (usft)	+E/-W (usft)	Vertical Section (usft)	Dogleg Rate (°/100usft)	Build Rate (°/100usft)	Turn Rate (°/100usft)	
9,800.00	90.07	90.15	7,156.48	-1,469.66	2,691.06	2,839.48	0.00	0.00	0.00	
9,900.00	90.07	90.15	7,156.37	-1,469.93	2,791.06	2,938.88	0.00	0.00	0.00	
10,000.00	90.07	90.15	7,156.25	-1,470.19	2,891.06	3,038.27	0.00	0.00	0.00	
10,100.00	90.07	90.15	7,156.13	-1,470.46	2,991.06	3,137.66	0.00	0.00	0.00	
10,200.00	90.07	90.15	7,156.01	-1,470.73	3,091.06	3,237.06	0.00	0.00	0.00	
10,300.00	90.07	90.15	7,155.89	-1,470.99	3,191.06	3,336.45	0.00	0.00	0.00	
10,400.00	90.07	90.15	7,155.77	-1,471.26	3,291.06	3,435.84	0.00	0.00	0.00	
10,500.00	90.07	90.15	7,155.65	-1,471.53	3,391.06	3,535.23	0.00	0.00	0.00	
10,600.00	90.07	90.15	7,155.54	-1,471.79	3,491.06	3,634.63	0.00	0.00	0.00	
10,700.00	90.07	90.15	7,155.42	-1,472.06	3,591.06	3,734.02	0.00	0.00	0.00	
10,800.00	90.07	90.15	7,155.30	-1,472.33	3,691.06	3,833.41	0.00	0.00	0.00	
10,900.00	90.07	90.15	7,155.18	-1,472.59	3,791.06	3,932.81	0.00	0.00	0.00	
11,000.00	90.07	90.15	7,155.06	-1,472.86	3,891.06	4,032.20	0.00	0.00	0.00	
11,100.00	90.07	90.15	7,154.94	-1,473.13	3,991.06	4,131.59	0.00	0.00	0.00	
11,200.00	90.07	90.15	7,154.82	-1,473.39	4,091.06	4,230.99	0.00	0.00	0.00	
11,300.00	90.07	90.15	7,154.70	-1,473.66	4,191.06	4,330.38	0.00	0.00	0.00	
11,400.00	90.07	90.15	7,154.59	-1,473.93	4,291.06	4,429.77	0.00	0.00	0.00	
11,500.00	90.07	90.15	7,154.47	-1,474.19	4,391.05	4,529.17	0.00	0.00	0.00	
11,600.00	90.07	90.15	7,154.35	-1,474.46	4,491.05	4,628.56	0.00	0.00	0.00	
11,700.00	90.07	90.15	7,154.23	-1,474.73	4,591.05	4,727.95	0.00	0.00	0.00	
11,800.00	90.07	90.15	7,154.11	-1,474.99	4,691.05	4,827.35	0.00	0.00	0.00	
11,900.00	90.07	90.15	7,153.99	-1,475.26	4,791.05	4,926.74	0.00	0.00	0.00	
12,000.00	90.07	90.15	7,153.87	-1,475.53	4,891.05	5,026.13	0.00	0.00	0.00	
12,100.00	90.07	90.15	7,153.76	-1,475.79	4,991.05	5,125.53	0.00	0.00	0.00	
12,200.00	90.07	90.15	7,153.64	-1,476.06	5,091.05	5,224.92	0.00	0.00	0.00	
12,300.00	90.07	90.15	7,153.52	-1,476.33	5,191.05	5,324.31	0.00	0.00	0.00	
12,400.00	90.07	90.15	7,153.40	-1,476.59	5,291.05	5,423.70	0.00	0.00	0.00	
12,500.00	90.07	90.15	7,153.28	-1,476.86	5,391.05	5,523.10	0.00	0.00	0.00	
12,600.00	90.07	90.15	7,153.16	-1,477.13	5,491.05	5,622.49	0.00	0.00	0.00	
12,700.00	90.07	90.15	7,153.04	-1,477.39	5,591.05	5,721.88	0.00	0.00	0.00	
12,800.00	90.07	90.15	7,152.92	-1,477.66	5,691.05	5,821.28	0.00	0.00	0.00	
12,900.00	90.07	90.15	7,152.81	-1,477.93	5,791.05	5,920.67	0.00	0.00	0.00	
13,000.00	90.07	90.15	7,152.69	-1,478.19	5,891.05	6,020.06	0.00	0.00	0.00	
13,100.00	90.07	90.15	7,152.57	-1,478.46	5,991.05	6,119.46	0.00	0.00	0.00	
13,200.00	90.07	90.15	7,152.45	-1,478.73	6,091.05	6,218.85	0.00	0.00	0.00	
13,300.00	90.07	90.15	7,152.33	-1,478.99	6,191.05	6,318.24	0.00	0.00	0.00	
13,400.00	90.07	90.15	7,152.21	-1,479.26	6,291.05	6,417.64	0.00	0.00	0.00	
13,500.00	90.07	90.15	7,152.09	-1,479.53	6,391.05	6,517.03	0.00	0.00	0.00	
13,600.00	90.07	90.15	7,151.98	-1,479.80	6,491.05	6,616.42	0.00	0.00	0.00	
13,700.00	90.07	90.15	7,151.86	-1,480.06	6,591.05	6,715.82	0.00	0.00	0.00	
13,800.00	90.07	90.15	7,151.74	-1,480.33	6,691.04	6,815.21	0.00	0.00	0.00	
13,900.00	90.07	90.15	7,151.62	-1,480.60	6,791.04	6,914.60	0.00	0.00	0.00	
14,000.00	90.07	90.15	7,151.50	-1,480.86	6,891.04	7,014.00	0.00	0.00	0.00	
14,100.00	90.07	90.15	7,151.38	-1,481.13	6,991.04	7,113.39	0.00	0.00	0.00	
14,200.00	90.07	90.15	7,151.26	-1,481.40	7,091.04	7,212.78	0.00	0.00	0.00	
14,300.00	90.07	90.15	7,151.14	-1,481.66	7,191.04	7,312.17	0.00	0.00	0.00	
14,400.00	90.07	90.15	7,151.03	-1,481.93	7,291.04	7,411.57	0.00	0.00	0.00	
14,500.00	90.07	90.15	7,150.91	-1,482.20	7,391.04	7,510.96	0.00	0.00	0.00	
14,600.00	90.07	90.15	7,150.79	-1,482.46	7,491.04	7,610.35	0.00	0.00	0.00	
14,700.00	90.07	90.15	7,150.67	-1,482.73	7,591.04	7,709.75	0.00	0.00	0.00	
14,800.00	90.07	90.15	7,150.55	-1,483.00	7,691.04	7,809.14	0.00	0.00	0.00	
14,900.00	90.07	90.15	7,150.43	-1,483.26	7,791.04	7,908.53	0.00	0.00	0.00	
15,000.00	90.07	90.15	7,150.31	-1,483.53	7,891.04	8,007.93	0.00	0.00	0.00	
15,100.00	90.07	90.15	7,150.20	-1,483.80	7,991.04	8,107.32	0.00	0.00	0.00	

Planning Report

Planned Survey									
Measured Depth (usft)	Inclination (°)	Azimuth (°)	Vertical Depth (usft)	+N/-S (usft)	+E/-W (usft)	Vertical Section (usft)	Dogleg Rate (°/100usft)	Build Rate (°/100usft)	Turn Rate (°/100usft)
15,200.00	90.07	90.15	7,150.08	-1,484.06	8,091.04	8,206.71	0.00	0.00	0.00
15,300.00	90.07	90.15	7,149.96	-1,484.33	8,191.04	8,306.11	0.00	0.00	0.00
15,400.00	90.07	90.15	7,149.84	-1,484.60	8,291.04	8,405.50	0.00	0.00	0.00
15,500.00	90.07	90.15	7,149.72	-1,484.86	8,391.04	8,504.89	0.00	0.00	0.00
15,600.00	90.07	90.15	7,149.60	-1,485.13	8,491.04	8,604.29	0.00	0.00	0.00
15,700.00	90.07	90.15	7,149.48	-1,485.40	8,591.04	8,703.68	0.00	0.00	0.00
15,800.00	90.07	90.15	7,149.36	-1,485.66	8,691.04	8,803.07	0.00	0.00	0.00
15,900.00	90.07	90.15	7,149.25	-1,485.93	8,791.04	8,902.47	0.00	0.00	0.00
16,000.00	90.07	90.15	7,149.13	-1,486.20	8,891.04	9,001.86	0.00	0.00	0.00
16,100.00	90.07	90.15	7,149.01	-1,486.46	8,991.04	9,101.25	0.00	0.00	0.00
16,200.00	90.07	90.15	7,148.89	-1,486.73	9,091.03	9,200.65	0.00	0.00	0.00
16,300.00	90.07	90.15	7,148.77	-1,487.00	9,191.03	9,300.04	0.00	0.00	0.00
16,400.00	90.07	90.15	7,148.65	-1,487.26	9,291.03	9,399.43	0.00	0.00	0.00
16,500.00	90.07	90.15	7,148.53	-1,487.53	9,391.03	9,498.82	0.00	0.00	0.00
16,600.00	90.07	90.15	7,148.42	-1,487.80	9,491.03	9,598.22	0.00	0.00	0.00
16,700.00	90.07	90.15	7,148.30	-1,488.06	9,591.03	9,697.61	0.00	0.00	0.00
16,800.00	90.07	90.15	7,148.18	-1,488.33	9,691.03	9,797.00	0.00	0.00	0.00
16,900.00	90.07	90.15	7,148.06	-1,488.60	9,791.03	9,896.40	0.00	0.00	0.00
17,000.00	90.07	90.15	7,147.94	-1,488.86	9,891.03	9,995.79	0.00	0.00	0.00
17,100.00	90.07	90.15	7,147.82	-1,489.13	9,991.03	10,095.18	0.00	0.00	0.00
17,200.00	90.07	90.15	7,147.70	-1,489.40	10,091.03	10,194.58	0.00	0.00	0.00
17,300.00	90.07	90.15	7,147.58	-1,489.66	10,191.03	10,293.97	0.00	0.00	0.00
17,400.00	90.07	90.15	7,147.47	-1,489.93	10,291.03	10,393.36	0.00	0.00	0.00
17,500.00	90.07	90.15	7,147.35	-1,490.20	10,391.03	10,492.76	0.00	0.00	0.00
17,600.00	90.07	90.15	7,147.23	-1,490.46	10,491.03	10,592.15	0.00	0.00	0.00
17,700.00	90.07	90.15	7,147.11	-1,490.73	10,591.03	10,691.54	0.00	0.00	0.00
17,800.00	90.07	90.15	7,146.99	-1,491.00	10,691.03	10,790.94	0.00	0.00	0.00
17,900.00	90.07	90.15	7,146.87	-1,491.26	10,791.03	10,890.33	0.00	0.00	0.00
18,000.00	90.07	90.15	7,146.75	-1,491.53	10,891.03	10,989.72	0.00	0.00	0.00
18,100.00	90.07	90.15	7,146.64	-1,491.80	10,991.03	11,089.12	0.00	0.00	0.00
18,200.00	90.07	90.15	7,146.52	-1,492.06	11,091.03	11,188.51	0.00	0.00	0.00
18,300.00	90.07	90.15	7,146.40	-1,492.33	11,191.03	11,287.90	0.00	0.00	0.00
18,400.00	90.07	90.15	7,146.28	-1,492.60	11,291.03	11,387.29	0.00	0.00	0.00
18,500.00	90.07	90.15	7,146.16	-1,492.86	11,391.02	11,486.69	0.00	0.00	0.00
18,600.00	90.07	90.15	7,146.04	-1,493.13	11,491.02	11,586.08	0.00	0.00	0.00
18,700.00	90.07	90.15	7,145.92	-1,493.40	11,591.02	11,685.47	0.00	0.00	0.00
18,800.00	90.07	90.15	7,145.80	-1,493.66	11,691.02	11,784.87	0.00	0.00	0.00
18,900.00	90.07	90.15	7,145.69	-1,493.93	11,791.02	11,884.26	0.00	0.00	0.00
19,000.00	90.07	90.15	7,145.57	-1,494.20	11,891.02	11,983.65	0.00	0.00	0.00
19,100.00	90.07	90.15	7,145.45	-1,494.46	11,991.02	12,083.05	0.00	0.00	0.00
19,200.00	90.07	90.15	7,145.33	-1,494.73	12,091.02	12,182.44	0.00	0.00	0.00
19,300.00	90.07	90.15	7,145.21	-1,495.00	12,191.02	12,281.83	0.00	0.00	0.00
19,400.00	90.07	90.15	7,145.09	-1,495.26	12,291.02	12,381.23	0.00	0.00	0.00
19,500.00	90.07	90.15	7,144.97	-1,495.53	12,391.02	12,480.62	0.00	0.00	0.00
19,600.00	90.07	90.15	7,144.86	-1,495.80	12,491.02	12,580.01	0.00	0.00	0.00
19,700.00	90.07	90.15	7,144.74	-1,496.06	12,591.02	12,679.41	0.00	0.00	0.00
19,800.00	90.07	90.15	7,144.62	-1,496.33	12,691.02	12,778.80	0.00	0.00	0.00
19,900.00	90.07	90.15	7,144.50	-1,496.60	12,791.02	12,878.19	0.00	0.00	0.00
20,000.00	90.07	90.15	7,144.38	-1,496.86	12,891.02	12,977.59	0.00	0.00	0.00
20,100.00	90.07	90.15	7,144.26	-1,497.13	12,991.02	13,076.98	0.00	0.00	0.00
20,200.00	90.07	90.15	7,144.14	-1,497.40	13,091.02	13,176.37	0.00	0.00	0.00
20,300.00	90.07	90.15	7,144.02	-1,497.66	13,191.02	13,275.76	0.00	0.00	0.00
20,320.42	90.07	90.15	7,144.00	-1,497.72	13,211.44	13,296.06	0.00	0.00	0.00
TD Well @ 20320.42ft									

Hewlett-Packard

Planning Report

Database:	EDM 5000.14 Single User Db	Local Co-ordinate Reference:	Well SANFORD 40N-27B-XR
Company:	SRC ENERGY	TVD Reference:	RKB = 4' @ 4909.00usft (RIG)
Project:	WELD COUNTY (NAD83, TRUE NORTH)	MD Reference:	RKB = 4' @ 4909.00usft (RIG)
Site:	5N-66W-29 SANFORD 21-29 PAD	North Reference:	True
Well:	SANFORD 40N-27B-XR	Survey Calculation Method:	Minimum Curvature
Wellbore:	Wellbore #1		
Design:	Design #1		

Planned Survey									
Measured Depth (usft)	Inclination (°)	Azimuth (°)	Vertical Depth (usft)	+N/-S (usft)	+E/-W (usft)	Vertical Section (usft)	Dogleg Rate (°/100usft)	Build Rate (°/100usft)	Turn Rate (°/100usft)

Casing Points					
Measured Depth (usft)	Vertical Depth (usft)	Name		Casing Diameter (")	Hole Diameter (")
1,828.43	1,800.00	9 5/8"		9-5/8	13-1/2
7,679.97	7,159.00	Production Zone Top		5-1/2	8-1/2

Plan Annotations				
Measured Depth (usft)	Vertical Depth (usft)	Local Coordinates		Comment
		+N/-S (usft)	+E/-W (usft)	
200.00	200.00	0.00	0.00	Begin Nudge @ 200.00ft
821.00	816.15	-66.96	-3.33	Hold Tangent @ 821.00ft
6,672.79	6,530.99	-1,323.99	-65.91	KOP @ 6672.79ft :: DLS = 9°/100'
7,679.97	7,159.00	-1,464.01	571.04	End Build @ 7679.97ft
20,320.42	7,144.00	-1,497.72	13,211.44	TD Well @ 20320.42ft