

SRC ENERGY

WELD COUNTY (NAD83, TRUE NORTH)

5N-66W-29 SANFORD 21-29 PAD

SANFORD 31N-30B-M

Wellbore #1

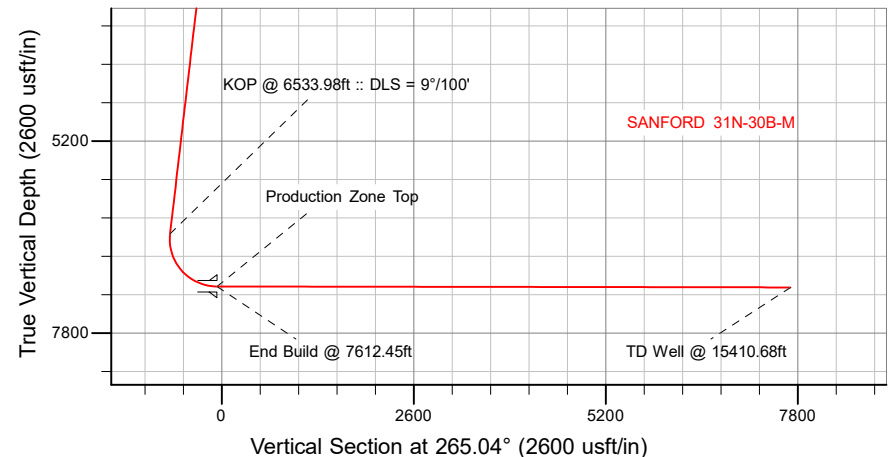
Plan: Design #1

Standard Planning Report

25 October, 2018

SRC ENERGY

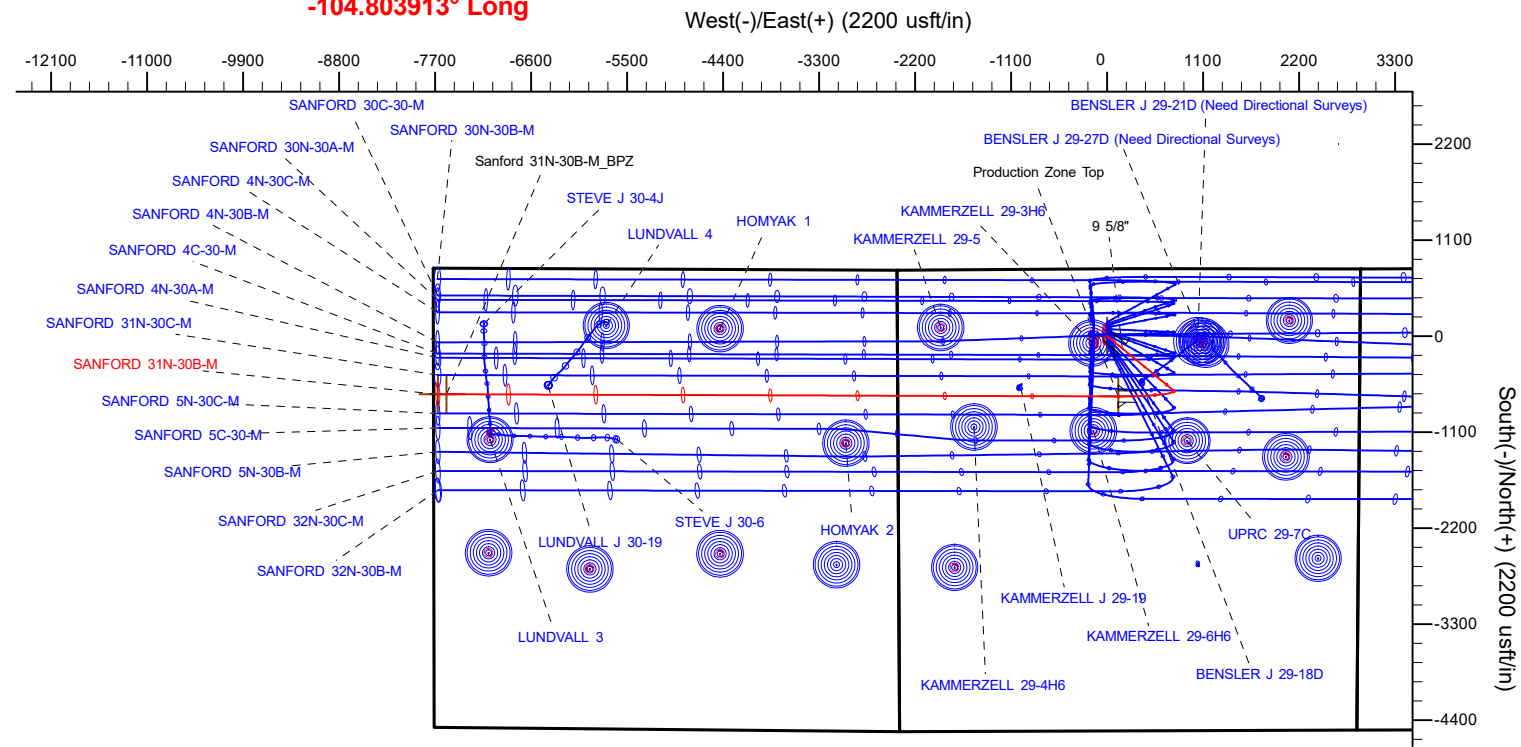
CASING DETAILS		
TVD	MD	Name
1800.00	1816.99	9 5/8"
7168.00	7612.45	Production Zone Top



SECTION DETAILS										
Sec	MD	Inc	Azi	TVD	+N/-S	+E/-W	Dleg	TFace	VSect	Target
1	0.00	0.00	0.00	0.00	0.00	0.00	0.00	0.00	0.00	
2	200.00	0.00	0.00	200.00	0.00	0.00	0.00	0.00	0.00	
3	662.00	9.24	129.30	660.00	-23.54	28.77	2.00	129.30	-26.62	
4	6533.98	9.24	129.30	6455.79	-620.74	758.39	0.00	0.00	-701.87	
5	7612.45	89.90	270.19	7168.00	-691.62	127.55	9.00	140.53	-67.27	
6	15410.68	89.90	270.19	7181.00	-665.83	-7670.63	0.00	0.00	7699.47	Sanford 31N-30B-M_BHL

WELLBORE TARGET DETAILS (LAT/LONG)					
Name	TVD	+N-S	+E/-W	Latitude	Longitude
Sanford 31N-30B-M_BPZ	0.00	-665.86	-7570.61	40.373807	-104.831544
Sanford 31N-30B-M_SHL	0.00	0.00	0.00	40.375638	-104.804372
Sanford 31N-30B-M_BHL	7181.00	-665.83	-7670.63	40.373807	-104.831903

SHL	LP	BPZ	BHL
771' FNL	1463' FNL	1444' FNL	1444' FNL
2393' FWL	2508' FWL	150' FWL	50' FWL
	40.373739° Lat		
	-104.803913° Long		
		West (-) / East (+) (2000 usft/in)	



WELL DETAILS: SANFORD 31N-30B-M
GL = 4904'
RKB = 4' @ 4908.00usft (RIG)
Plan: Design #1 (SANFORD 31N-30B-M/Wellbore #1)
Date: 10/25/2015

T **M** Azimuths to True North
 Magnetic North: 8.09°
 Magnetic Field
 Strength: 52221.8snT
 Dip Angle: 66.79°
 Date: 10/20/2018
 Model: IGRF2015

Hewlett-Packard

Planning Report

Database:	EDM 5000.14 Single User Db	Local Co-ordinate Reference:	Well SANFORD 31N-30B-M
Company:	SRC ENERGY	TVD Reference:	RKB = 4' @ 4908.00usft (RIG)
Project:	WELD COUNTY (NAD83, TRUE NORTH)	MD Reference:	RKB = 4' @ 4908.00usft (RIG)
Site:	5N-66W-29 SANFORD 21-29 PAD	North Reference:	True
Well:	SANFORD 31N-30B-M	Survey Calculation Method:	Minimum Curvature
Wellbore:	Wellbore #1		
Design:	Design #1		

Project	WELD COUNTY (NAD83, TRUE NORTH)		
Map System:	US State Plane 1983	System Datum:	Mean Sea Level
Geo Datum:	North American Datum 1983		
Map Zone:	Colorado Northern Zone		

Site	5N-66W-29 SANFORD 21-29 PAD			
Site Position:		Northing:	1,380,603.61 usft	Latitude: 40.376075
From:	Lat/Long	Easting:	3,193,654.99 usft	Longitude: -104.804914
Position Uncertainty:	0.00 usft	Slot Radius:	13-3/16 "	Grid Convergence: 0.45 °

Well	SANFORD 31N-30B-M			
Well Position	+N/-S	-159.20 usft	Northing:	1,380,445.59 usft
	+E/-W	151.01 usft	Easting:	3,193,807.24 usft
Position Uncertainty		3.28 usft	Wellhead Elevation:	Latitude: 40.375638
				Longitude: -104.804372
				Ground Level: 4,904.00 usft

Wellbore	Wellbore #1				
Magnetics	Model Name	Sample Date	Declination (°)	Dip Angle (°)	Field Strength (nT)
	IGRF2015	10/20/2018	8.09	66.79	52,221.84952825

Design	Design #1			
Audit Notes:				
Version:	Phase:	PLAN	Tie On Depth:	0.00
Vertical Section:	Depth From (TVD) (usft)	+N/-S (usft)	+E/-W (usft)	Direction (°)
	0.00	0.00	0.00	265.04

Plan Survey Tool Program	Date	10/25/2018		
Depth From (usft)	Depth To (usft)	Survey (Wellbore)	Tool Name	Remarks
1	0.00	1,800.00	Design #1 (Wellbore #1)	SRC Energy_ISCWSA REV 2
				Fixed:v2:crustal field declinatio
2	1,800.00	15,410.68	Design #1 (Wellbore #1)	SRC Energy_ISCWSA REV 2
				Fixed:v2:Rockies, crustal dec +

Plan Sections										
Measured Depth (usft)	Inclination (°)	Azimuth (°)	Vertical Depth (usft)	+N/-S (usft)	+E/-W (usft)	Dogleg Rate (°/100usft)	Build Rate (°/100usft)	Turn Rate (°/100usft)	TFO (°)	Target
0.00	0.00	0.00	0.00	0.00	0.00	0.00	0.00	0.00	0.00	
200.00	0.00	0.00	200.00	0.00	0.00	0.00	0.00	0.00	0.00	
662.00	9.24	129.30	660.00	-23.54	28.77	2.00	2.00	0.00	129.30	
6,533.98	9.24	129.30	6,455.79	-620.74	758.39	0.00	0.00	0.00	0.00	
7,612.45	89.90	270.19	7,168.00	-691.62	127.55	9.00	7.48	13.06	140.53	
15,410.68	89.90	270.19	7,181.00	-665.83	-7,670.63	0.00	0.00	0.00	0.00	Sanford 31N-30B-M_I

Hewlett-Packard

Planning Report

Database:	EDM 5000.14 Single User Db	Local Co-ordinate Reference:	Well SANFORD 31N-30B-M
Company:	SRC ENERGY	TVD Reference:	RKB = 4' @ 4908.00usft (RIG)
Project:	WELD COUNTY (NAD83, TRUE NORTH)	MD Reference:	RKB = 4' @ 4908.00usft (RIG)
Site:	5N-66W-29 SANFORD 21-29 PAD	North Reference:	True
Well:	SANFORD 31N-30B-M	Survey Calculation Method:	Minimum Curvature
Wellbore:	Wellbore #1		
Design:	Design #1		

Planned Survey									
Measured Depth (usft)	Inclination (°)	Azimuth (°)	Vertical Depth (usft)	+N/-S (usft)	+E/-W (usft)	Vertical Section (usft)	Dogleg Rate (°/100usft)	Build Rate (°/100usft)	Turn Rate (°/100usft)
0.00	0.00	0.00	0.00	0.00	0.00	0.00	0.00	0.00	0.00
100.00	0.00	0.00	100.00	0.00	0.00	0.00	0.00	0.00	0.00
200.00	0.00	0.00	200.00	0.00	0.00	0.00	0.00	0.00	0.00
Begin Nudge @ 200.00ft									
300.00	2.00	129.30	299.98	-1.11	1.35	-1.25	2.00	2.00	0.00
400.00	4.00	129.30	399.84	-4.42	5.40	-5.00	2.00	2.00	0.00
500.00	6.00	129.30	499.45	-9.94	12.14	-11.24	2.00	2.00	0.00
600.00	8.00	129.30	598.70	-17.66	21.57	-19.97	2.00	2.00	0.00
662.00	9.24	129.30	660.00	-23.54	28.77	-26.62	2.00	2.00	0.00
Hold Tangent @ 662.00ft									
700.00	9.24	129.30	697.51	-27.41	33.49	-30.99	0.00	0.00	0.00
800.00	9.24	129.30	796.21	-37.58	45.91	-42.49	0.00	0.00	0.00
900.00	9.24	129.30	894.91	-47.75	58.34	-53.99	0.00	0.00	0.00
1,000.00	9.24	129.30	993.61	-57.92	70.76	-65.49	0.00	0.00	0.00
1,100.00	9.24	129.30	1,092.32	-68.09	83.19	-76.99	0.00	0.00	0.00
1,200.00	9.24	129.30	1,191.02	-78.26	95.62	-88.49	0.00	0.00	0.00
1,300.00	9.24	129.30	1,289.72	-88.43	108.04	-99.99	0.00	0.00	0.00
1,400.00	9.24	129.30	1,388.42	-98.60	120.47	-111.49	0.00	0.00	0.00
1,500.00	9.24	129.30	1,487.13	-108.77	132.89	-122.99	0.00	0.00	0.00
1,600.00	9.24	129.30	1,585.83	-118.94	145.32	-134.49	0.00	0.00	0.00
1,700.00	9.24	129.30	1,684.53	-129.11	157.74	-145.99	0.00	0.00	0.00
1,800.00	9.24	129.30	1,783.23	-139.28	170.17	-157.49	0.00	0.00	0.00
1,816.99	9.24	129.30	1,800.00	-141.01	172.28	-159.44	0.00	0.00	0.00
9 5/8"									
1,900.00	9.24	129.30	1,881.94	-149.45	182.59	-168.99	0.00	0.00	0.00
2,000.00	9.24	129.30	1,980.64	-159.62	195.02	-180.49	0.00	0.00	0.00
2,100.00	9.24	129.30	2,079.34	-169.79	207.45	-191.99	0.00	0.00	0.00
2,200.00	9.24	129.30	2,178.04	-179.96	219.87	-203.48	0.00	0.00	0.00
2,300.00	9.24	129.30	2,276.75	-190.13	232.30	-214.98	0.00	0.00	0.00
2,400.00	9.24	129.30	2,375.45	-200.30	244.72	-226.48	0.00	0.00	0.00
2,500.00	9.24	129.30	2,474.15	-210.47	257.15	-237.98	0.00	0.00	0.00
2,600.00	9.24	129.30	2,572.85	-220.64	269.57	-249.48	0.00	0.00	0.00
2,700.00	9.24	129.30	2,671.56	-230.81	282.00	-260.98	0.00	0.00	0.00
2,800.00	9.24	129.30	2,770.26	-240.98	294.42	-272.48	0.00	0.00	0.00
2,900.00	9.24	129.30	2,868.96	-251.15	306.85	-283.98	0.00	0.00	0.00
3,000.00	9.24	129.30	2,967.66	-261.32	319.28	-295.48	0.00	0.00	0.00
3,100.00	9.24	129.30	3,066.37	-271.49	331.70	-306.98	0.00	0.00	0.00
3,200.00	9.24	129.30	3,165.07	-281.66	344.13	-318.48	0.00	0.00	0.00
3,300.00	9.24	129.30	3,263.77	-291.83	356.55	-329.98	0.00	0.00	0.00
3,400.00	9.24	129.30	3,362.47	-302.00	368.98	-341.48	0.00	0.00	0.00
3,500.00	9.24	129.30	3,461.18	-312.17	381.40	-352.98	0.00	0.00	0.00
3,600.00	9.24	129.30	3,559.88	-322.35	393.83	-364.48	0.00	0.00	0.00
3,700.00	9.24	129.30	3,658.58	-332.52	406.25	-375.98	0.00	0.00	0.00
3,800.00	9.24	129.30	3,757.28	-342.69	418.68	-387.48	0.00	0.00	0.00
3,900.00	9.24	129.30	3,855.99	-352.86	431.11	-398.98	0.00	0.00	0.00
4,000.00	9.24	129.30	3,954.69	-363.03	443.53	-410.48	0.00	0.00	0.00
4,100.00	9.24	129.30	4,053.39	-373.20	455.96	-421.98	0.00	0.00	0.00
4,200.00	9.24	129.30	4,152.09	-383.37	468.38	-433.48	0.00	0.00	0.00
4,300.00	9.24	129.30	4,250.79	-393.54	480.81	-444.97	0.00	0.00	0.00
4,400.00	9.24	129.30	4,349.50	-403.71	493.23	-456.47	0.00	0.00	0.00
4,500.00	9.24	129.30	4,448.20	-413.88	505.66	-467.97	0.00	0.00	0.00
4,600.00	9.24	129.30	4,546.90	-424.05	518.08	-479.47	0.00	0.00	0.00
4,700.00	9.24	129.30	4,645.60	-434.22	530.51	-490.97	0.00	0.00	0.00

Hewlett-Packard

Planning Report

Database:	EDM 5000.14 Single User Db	Local Co-ordinate Reference:	Well SANFORD 31N-30B-M
Company:	SRC ENERGY	TVD Reference:	RKB = 4' @ 4908.00usft (RIG)
Project:	WELD COUNTY (NAD83, TRUE NORTH)	MD Reference:	RKB = 4' @ 4908.00usft (RIG)
Site:	5N-66W-29 SANFORD 21-29 PAD	North Reference:	True
Well:	SANFORD 31N-30B-M	Survey Calculation Method:	Minimum Curvature
Wellbore:	Wellbore #1		
Design:	Design #1		

Planned Survey									
Measured Depth (usft)	Inclination (°)	Azimuth (°)	Vertical Depth (usft)	+N/-S (usft)	+E/-W (usft)	Vertical Section (usft)	Dogleg Rate (°/100usft)	Build Rate (°/100usft)	Turn Rate (°/100usft)
4,800.00	9.24	129.30	4,744.31	-444.39	542.94	-502.47	0.00	0.00	0.00
4,900.00	9.24	129.30	4,843.01	-454.56	555.36	-513.97	0.00	0.00	0.00
5,000.00	9.24	129.30	4,941.71	-464.73	567.79	-525.47	0.00	0.00	0.00
5,100.00	9.24	129.30	5,040.41	-474.90	580.21	-536.97	0.00	0.00	0.00
5,200.00	9.24	129.30	5,139.12	-485.07	592.64	-548.47	0.00	0.00	0.00
5,300.00	9.24	129.30	5,237.82	-495.24	605.06	-559.97	0.00	0.00	0.00
5,400.00	9.24	129.30	5,336.52	-505.41	617.49	-571.47	0.00	0.00	0.00
5,500.00	9.24	129.30	5,435.22	-515.58	629.91	-582.97	0.00	0.00	0.00
5,600.00	9.24	129.30	5,533.93	-525.75	642.34	-594.47	0.00	0.00	0.00
5,700.00	9.24	129.30	5,632.63	-535.92	654.77	-605.97	0.00	0.00	0.00
5,800.00	9.24	129.30	5,731.33	-546.09	667.19	-617.47	0.00	0.00	0.00
5,900.00	9.24	129.30	5,830.03	-556.26	679.62	-628.97	0.00	0.00	0.00
6,000.00	9.24	129.30	5,928.74	-566.43	692.04	-640.47	0.00	0.00	0.00
6,100.00	9.24	129.30	6,027.44	-576.60	704.47	-651.97	0.00	0.00	0.00
6,200.00	9.24	129.30	6,126.14	-586.77	716.89	-663.47	0.00	0.00	0.00
6,300.00	9.24	129.30	6,224.84	-596.94	729.32	-674.97	0.00	0.00	0.00
6,400.00	9.24	129.30	6,323.55	-607.11	741.74	-686.47	0.00	0.00	0.00
6,500.00	9.24	129.30	6,422.25	-617.28	754.17	-697.96	0.00	0.00	0.00
6,533.98	9.24	129.30	6,455.79	-620.74	758.39	-701.87	0.00	0.00	0.00
KOP @ 6533.98ft :: DLS = 9°/100'									
6,600.00	5.98	168.45	6,521.26	-627.47	763.19	-706.07	9.00	-4.93	59.30
6,700.00	9.73	233.45	6,620.47	-637.63	757.43	-699.45	9.00	3.75	65.00
6,800.00	17.75	251.50	6,717.57	-647.52	736.14	-677.39	9.00	8.02	18.05
6,900.00	26.40	258.27	6,810.17	-656.89	699.85	-640.42	9.00	8.65	6.77
7,000.00	35.21	261.84	6,895.98	-665.52	649.44	-589.46	9.00	8.82	3.57
7,100.00	44.09	264.12	6,972.90	-673.19	586.16	-525.75	9.00	8.88	2.28
7,200.00	53.01	265.77	7,039.03	-679.72	511.57	-450.88	9.00	8.92	1.65
7,300.00	61.94	267.06	7,092.74	-684.94	427.50	-366.67	9.00	8.93	1.30
7,400.00	70.89	268.16	7,132.71	-688.72	336.03	-275.21	9.00	8.94	1.10
7,500.00	79.84	269.15	7,157.96	-690.98	239.40	-178.75	9.00	8.95	0.98
7,600.00	88.79	270.08	7,167.85	-691.65	140.00	-79.66	9.00	8.95	0.93
7,612.45	89.90	270.19	7,168.00	-691.62	127.55	-67.26	9.00	8.95	0.92
End Build @ 7612.45ft - Production Zone Top									
7,700.00	89.90	270.19	7,168.14	-691.33	40.00	19.93	0.00	0.00	0.00
7,800.00	89.90	270.19	7,168.31	-691.00	-60.00	119.53	0.00	0.00	0.00
7,900.00	89.90	270.19	7,168.48	-690.67	-160.00	219.13	0.00	0.00	0.00
8,000.00	89.90	270.19	7,168.64	-690.33	-260.00	318.72	0.00	0.00	0.00
8,100.00	89.90	270.19	7,168.81	-690.00	-360.00	418.32	0.00	0.00	0.00
8,200.00	89.90	270.19	7,168.98	-689.67	-460.00	517.91	0.00	0.00	0.00
8,300.00	89.90	270.19	7,169.14	-689.34	-560.00	617.51	0.00	0.00	0.00
8,400.00	89.90	270.19	7,169.31	-689.01	-660.00	717.11	0.00	0.00	0.00
8,500.00	89.90	270.19	7,169.48	-688.68	-759.99	816.70	0.00	0.00	0.00
8,600.00	89.90	270.19	7,169.64	-688.35	-859.99	916.30	0.00	0.00	0.00
8,700.00	89.90	270.19	7,169.81	-688.02	-959.99	1,015.89	0.00	0.00	0.00
8,800.00	89.90	270.19	7,169.98	-687.69	-1,059.99	1,115.49	0.00	0.00	0.00
8,900.00	89.90	270.19	7,170.14	-687.36	-1,159.99	1,215.09	0.00	0.00	0.00
9,000.00	89.90	270.19	7,170.31	-687.03	-1,259.99	1,314.68	0.00	0.00	0.00
9,100.00	89.90	270.19	7,170.48	-686.70	-1,359.99	1,414.28	0.00	0.00	0.00
9,200.00	89.90	270.19	7,170.64	-686.37	-1,459.99	1,513.87	0.00	0.00	0.00
9,300.00	89.90	270.19	7,170.81	-686.04	-1,559.99	1,613.47	0.00	0.00	0.00
9,400.00	89.90	270.19	7,170.98	-685.70	-1,659.99	1,713.07	0.00	0.00	0.00
9,500.00	89.90	270.19	7,171.14	-685.37	-1,759.99	1,812.66	0.00	0.00	0.00
9,600.00	89.90	270.19	7,171.31	-685.04	-1,859.99	1,912.26	0.00	0.00	0.00
9,700.00	89.90	270.19	7,171.48	-684.71	-1,959.99	2,011.86	0.00	0.00	0.00

Hewlett-Packard

Planning Report

Database:	EDM 5000.14 Single User Db	Local Co-ordinate Reference:	Well SANFORD 31N-30B-M
Company:	SRC ENERGY	TVD Reference:	RKB = 4' @ 4908.00usft (RIG)
Project:	WELD COUNTY (NAD83, TRUE NORTH)	MD Reference:	RKB = 4' @ 4908.00usft (RIG)
Site:	5N-66W-29 SANFORD 21-29 PAD	North Reference:	True
Well:	SANFORD 31N-30B-M	Survey Calculation Method:	Minimum Curvature
Wellbore:	Wellbore #1		
Design:	Design #1		

Planned Survey									
Measured Depth (usft)	Inclination (°)	Azimuth (°)	Vertical Depth (usft)	+N/-S (usft)	+E/-W (usft)	Vertical Section (usft)	Dogleg Rate (°/100usft)	Build Rate (°/100usft)	Turn Rate (°/100usft)
9,800.00	89.90	270.19	7,171.64	-684.38	-2,059.99	2,111.45	0.00	0.00	0.00
9,900.00	89.90	270.19	7,171.81	-684.05	-2,159.98	2,211.05	0.00	0.00	0.00
10,000.00	89.90	270.19	7,171.98	-683.72	-2,259.98	2,310.64	0.00	0.00	0.00
10,100.00	89.90	270.19	7,172.14	-683.39	-2,359.98	2,410.24	0.00	0.00	0.00
10,200.00	89.90	270.19	7,172.31	-683.06	-2,459.98	2,509.84	0.00	0.00	0.00
10,300.00	89.90	270.19	7,172.48	-682.73	-2,559.98	2,609.43	0.00	0.00	0.00
10,400.00	89.90	270.19	7,172.64	-682.40	-2,659.98	2,709.03	0.00	0.00	0.00
10,500.00	89.90	270.19	7,172.81	-682.07	-2,759.98	2,808.62	0.00	0.00	0.00
10,600.00	89.90	270.19	7,172.98	-681.74	-2,859.98	2,908.22	0.00	0.00	0.00
10,700.00	89.90	270.19	7,173.14	-681.40	-2,959.98	3,007.82	0.00	0.00	0.00
10,800.00	89.90	270.19	7,173.31	-681.07	-3,059.98	3,107.41	0.00	0.00	0.00
10,900.00	89.90	270.19	7,173.48	-680.74	-3,159.98	3,207.01	0.00	0.00	0.00
11,000.00	89.90	270.19	7,173.65	-680.41	-3,259.98	3,306.60	0.00	0.00	0.00
11,100.00	89.90	270.19	7,173.81	-680.08	-3,359.98	3,406.20	0.00	0.00	0.00
11,200.00	89.90	270.19	7,173.98	-679.75	-3,459.98	3,505.80	0.00	0.00	0.00
11,300.00	89.90	270.19	7,174.15	-679.42	-3,559.98	3,605.39	0.00	0.00	0.00
11,400.00	89.90	270.19	7,174.31	-679.09	-3,659.97	3,704.99	0.00	0.00	0.00
11,500.00	89.90	270.19	7,174.48	-678.76	-3,759.97	3,804.59	0.00	0.00	0.00
11,600.00	89.90	270.19	7,174.65	-678.43	-3,859.97	3,904.18	0.00	0.00	0.00
11,700.00	89.90	270.19	7,174.81	-678.10	-3,959.97	4,003.78	0.00	0.00	0.00
11,800.00	89.90	270.19	7,174.98	-677.77	-4,059.97	4,103.37	0.00	0.00	0.00
11,900.00	89.90	270.19	7,175.15	-677.44	-4,159.97	4,202.97	0.00	0.00	0.00
12,000.00	89.90	270.19	7,175.31	-677.11	-4,259.97	4,302.57	0.00	0.00	0.00
12,100.00	89.90	270.19	7,175.48	-676.77	-4,359.97	4,402.16	0.00	0.00	0.00
12,200.00	89.90	270.19	7,175.65	-676.44	-4,459.97	4,501.76	0.00	0.00	0.00
12,300.00	89.90	270.19	7,175.81	-676.11	-4,559.97	4,601.35	0.00	0.00	0.00
12,400.00	89.90	270.19	7,175.98	-675.78	-4,659.97	4,700.95	0.00	0.00	0.00
12,500.00	89.90	270.19	7,176.15	-675.45	-4,759.97	4,800.55	0.00	0.00	0.00
12,600.00	89.90	270.19	7,176.31	-675.12	-4,859.97	4,900.14	0.00	0.00	0.00
12,700.00	89.90	270.19	7,176.48	-674.79	-4,959.97	4,999.74	0.00	0.00	0.00
12,800.00	89.90	270.19	7,176.65	-674.46	-5,059.96	5,099.33	0.00	0.00	0.00
12,900.00	89.90	270.19	7,176.81	-674.13	-5,159.96	5,198.93	0.00	0.00	0.00
13,000.00	89.90	270.19	7,176.98	-673.80	-5,259.96	5,298.53	0.00	0.00	0.00
13,100.00	89.90	270.19	7,177.15	-673.47	-5,359.96	5,398.12	0.00	0.00	0.00
13,200.00	89.90	270.19	7,177.31	-673.14	-5,459.96	5,497.72	0.00	0.00	0.00
13,300.00	89.90	270.19	7,177.48	-672.81	-5,559.96	5,597.32	0.00	0.00	0.00
13,400.00	89.90	270.19	7,177.65	-672.48	-5,659.96	5,696.91	0.00	0.00	0.00
13,500.00	89.90	270.19	7,177.81	-672.14	-5,759.96	5,796.51	0.00	0.00	0.00
13,600.00	89.90	270.19	7,177.98	-671.81	-5,859.96	5,896.10	0.00	0.00	0.00
13,700.00	89.90	270.19	7,178.15	-671.48	-5,959.96	5,995.70	0.00	0.00	0.00
13,800.00	89.90	270.19	7,178.31	-671.15	-6,059.96	6,095.30	0.00	0.00	0.00
13,900.00	89.90	270.19	7,178.48	-670.82	-6,159.96	6,194.89	0.00	0.00	0.00
14,000.00	89.90	270.19	7,178.65	-670.49	-6,259.96	6,294.49	0.00	0.00	0.00
14,100.00	89.90	270.19	7,178.81	-670.16	-6,359.96	6,394.08	0.00	0.00	0.00
14,200.00	89.90	270.19	7,178.98	-669.83	-6,459.96	6,493.68	0.00	0.00	0.00
14,300.00	89.90	270.19	7,179.15	-669.50	-6,559.95	6,593.28	0.00	0.00	0.00
14,400.00	89.90	270.19	7,179.31	-669.17	-6,659.95	6,692.87	0.00	0.00	0.00
14,500.00	89.90	270.19	7,179.48	-668.84	-6,759.95	6,792.47	0.00	0.00	0.00
14,600.00	89.90	270.19	7,179.65	-668.51	-6,859.95	6,892.06	0.00	0.00	0.00
14,700.00	89.90	270.19	7,179.82	-668.18	-6,959.95	6,991.66	0.00	0.00	0.00
14,800.00	89.90	270.19	7,179.98	-667.84	-7,059.95	7,091.26	0.00	0.00	0.00
14,900.00	89.90	270.19	7,180.15	-667.51	-7,159.95	7,190.85	0.00	0.00	0.00
15,000.00	89.90	270.19	7,180.32	-667.18	-7,259.95	7,290.45	0.00	0.00	0.00
15,100.00	89.90	270.19	7,180.48	-666.85	-7,359.95	7,390.05	0.00	0.00	0.00

Hewlett-Packard

Planning Report

Database:	EDM 5000.14 Single User Db	Local Co-ordinate Reference:	Well SANFORD 31N-30B-M
Company:	SRC ENERGY	TVD Reference:	RKB = 4' @ 4908.00usft (RIG)
Project:	WELD COUNTY (NAD83, TRUE NORTH)	MD Reference:	RKB = 4' @ 4908.00usft (RIG)
Site:	5N-66W-29 SANFORD 21-29 PAD	North Reference:	True
Well:	SANFORD 31N-30B-M	Survey Calculation Method:	Minimum Curvature
Wellbore:	Wellbore #1		
Design:	Design #1		

Planned Survey									
Measured Depth (usft)	Inclination (°)	Azimuth (°)	Vertical Depth (usft)	+N/-S (usft)	+E/-W (usft)	Vertical Section (usft)	Dogleg Rate (°/100usft)	Build Rate (°/100usft)	Turn Rate (°/100usft)
15,200.00	89.90	270.19	7,180.65	-666.52	-7,459.95	7,489.64	0.00	0.00	0.00
15,300.00	89.90	270.19	7,180.82	-666.19	-7,559.95	7,589.24	0.00	0.00	0.00
15,400.00	89.90	270.19	7,180.98	-665.86	-7,659.95	7,688.83	0.00	0.00	0.00
15,410.68	89.90	270.19	7,181.00	-665.83	-7,670.63	7,699.47	0.00	0.00	0.00
TD Well @ 15410.68ft									

Casing Points					
Measured Depth (usft)	Vertical Depth (usft)	Name	Casing Diameter (")	Hole Diameter (")	
1,816.99	1,800.00	9 5/8"	9-5/8	13-1/2	
7,612.45	7,168.00	Production Zone Top	5-1/2	8-1/2	

Plan Annotations				
Measured Depth (usft)	Vertical Depth (usft)	Local Coordinates		Comment
		+N/-S (usft)	+E/-W (usft)	
200.00	200.00	0.00	0.00	Begin Nudge @ 200.00ft
662.00	660.00	-23.54	28.77	Hold Tangent @ 662.00ft
6,533.98	6,455.79	-620.74	758.39	KOP @ 6533.98ft :: DLS = 9°/100'
7,612.45	7,168.00	-691.62	127.55	End Build @ 7612.45ft
15,410.68	7,181.00	-665.83	-7,670.63	TD Well @ 15410.68ft