

SRC ENERGY

WELD COUNTY (NAD83, TRUE NORTH)

5N-66W-29 SANFORD 21-29 PAD

SANFORD 4C-30-M

Wellbore #1

Plan: Design #1

Standard Planning Report

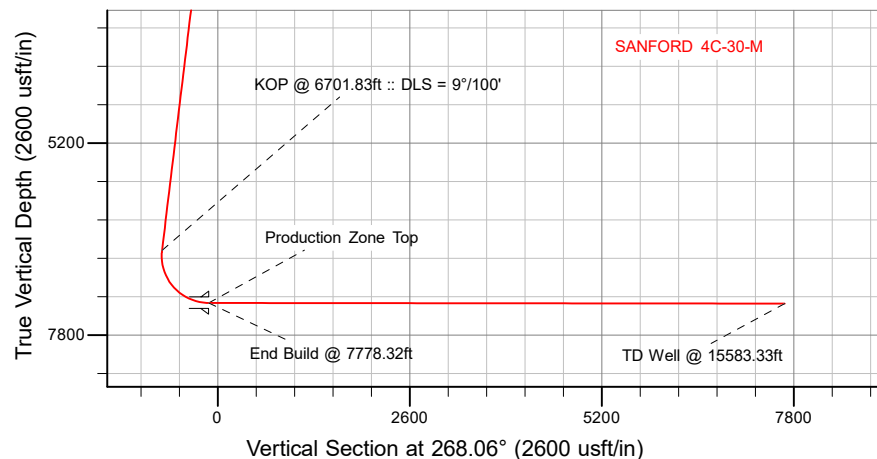
25 October, 2018

Project: WELD COUNTY (NAD83, TRUE NORTH)
Site: 5N-66W-29 SANFORD 21-29 PAD
Well: SANFORD 4C-30-M
Wellbore: Wellbore #1
Design: Design #1

SRC ENERGY

CASING DETAILS

TVD	MD	Name
1800.00	1811.14	9 5/8"
7364.00	7778.32	Production Zone Top



SECTION DETAILS

Sec	MD	Inc	Azi	TVD	+N/-S	+E/-W	Dleg	TFace	VSect	Target
1	0.00	0.00	0.00	0.00	0.00	0.00	0.00	0.00	0.00	
2	200.00	0.00	0.00	200.00	0.00	0.00	0.00	0.00	0.00	
3	566.00	7.32	108.20	565.01	-7.29	22.18	2.00	108.20	-21.92	
4	6701.83	7.32	108.20	6650.83	-251.47	764.84	0.00	0.00	-755.88	
5	7778.32	89.93	270.13	7364.00	-278.35	133.66	9.00	161.80	-124.15	
6	15583.33	89.93	270.13	7374.00	-260.00	-7671.32	0.00	0.00	7675.73	SANFORD 4C-30-M_BHL

WELLBORE TARGET DETAILS (LAT/LONG)

Name	TVD	+N/-S	+E/-W	Latitude	Longitude
SANFORD 4C-30-M_BPZ	0.00	-260.03	-7571.30	40.375086	-104.831548
SANFORD 4C-30-M_SHL	0.00	0.00	0.00	40.375803	-104.804373
SANFORD 4C-30-M_BHL	7374.00	-260.00	-7671.32	40.375086	-104.831907

WELL DETAILS: SANFORD 4C-30-M

GL = 4904'

RKB = 4' @ 4908.00usft (RIG)

Plan: Design #1 (SANFORD 4C-30-M/Wellbore #1)

Date: 10/25/2015

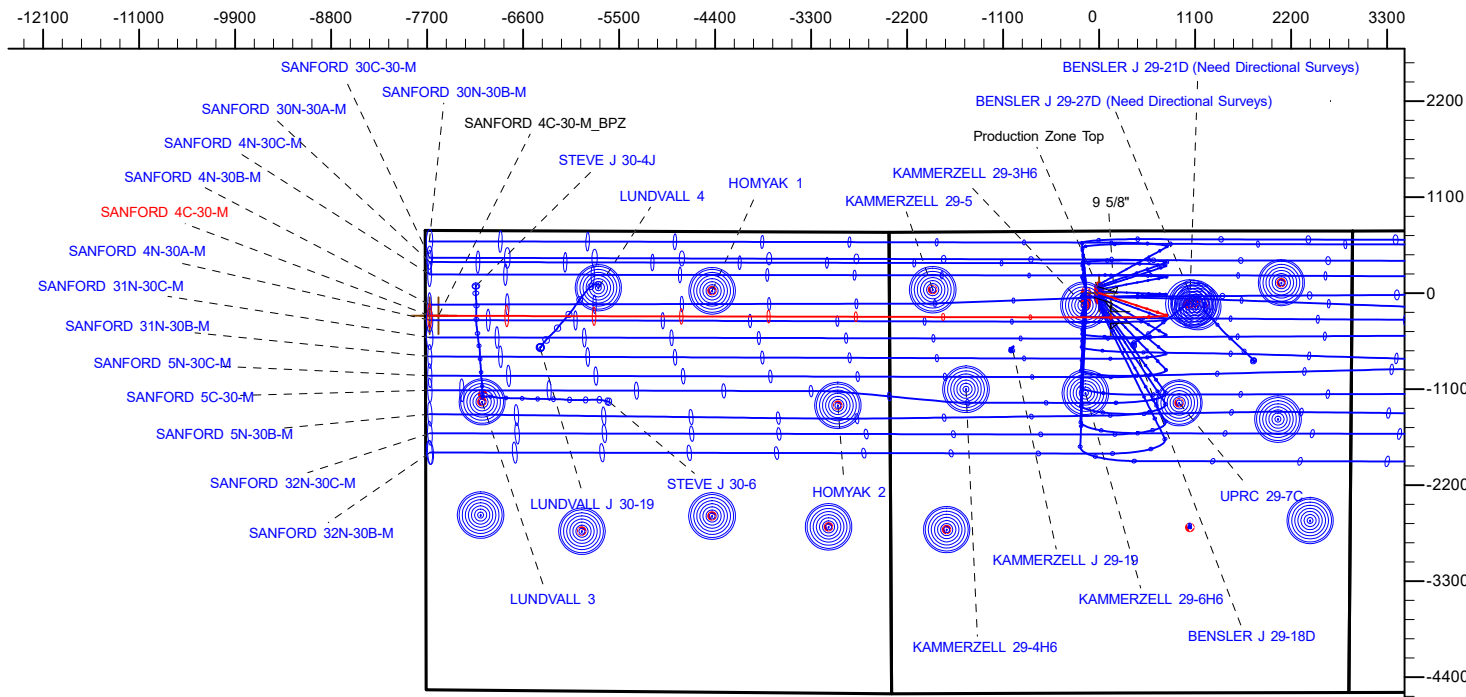
SHL
711' FNL
2394' FWL

LP
989' FNL
2521' FWL
40.375043° Lat
-104.803897° Long

BPZ
978' FNL
150' FWL

BHL
978' FNL
50' FWL

West(-)/East(+) (2200 usft/in)



T M Azimuths to True North
Magnetic North: 8.09°
Magnetic Field
Strength: 52221.9snT
Dip Angle: 66.79°
Date: 10/20/2018
Model: IGRF2015

Hewlett-Packard

Planning Report

Database:	EDM 5000.14 Single User Db	Local Co-ordinate Reference:	Well SANFORD 4C-30-M
Company:	SRC ENERGY	TVD Reference:	RKB = 4' @ 4908.00usft (RIG)
Project:	WELD COUNTY (NAD83, TRUE NORTH)	MD Reference:	RKB = 4' @ 4908.00usft (RIG)
Site:	5N-66W-29 SANFORD 21-29 PAD	North Reference:	True
Well:	SANFORD 4C-30-M	Survey Calculation Method:	Minimum Curvature
Wellbore:	Wellbore #1		
Design:	Design #1		

Project	WELD COUNTY (NAD83, TRUE NORTH)		
Map System:	US State Plane 1983	System Datum:	Mean Sea Level
Geo Datum:	North American Datum 1983		
Map Zone:	Colorado Northern Zone		

Site	5N-66W-29 SANFORD 21-29 PAD			
Site Position:		Northing:	1,380,603.61 usft	Latitude: 40.376075
From:	Lat/Long	Easting:	3,193,654.99 usft	Longitude: -104.804914
Position Uncertainty:	0.00 usft	Slot Radius:	13-3/16 "	Grid Convergence: 0.45 °

Well	SANFORD 4C-30-M			
Well Position	+N/-S	-99.10 usft	Northing:	1,380,505.70 usft
	+E/-W	150.73 usft	Easting:	3,193,806.49 usft
Position Uncertainty		3.28 usft	Wellhead Elevation:	Latitude: 40.375803
				Longitude: -104.804373
				Ground Level: 4,904.00 usft

Wellbore	Wellbore #1				
Magnetics	Model Name	Sample Date	Declination (°)	Dip Angle (°)	Field Strength (nT)
	IGRF2015	10/20/2018	8.09	66.79	52,221.93487715

Design	Design #1			
Audit Notes:				
Version:	Phase:	PLAN	Tie On Depth:	0.00
Vertical Section:	Depth From (TVD) (usft)	+N/-S (usft)	+E/-W (usft)	Direction (°)
	0.00	0.00	0.00	268.06

Plan Survey Tool Program	Date	10/25/2018		
Depth From (usft)	Depth To (usft)	Survey (Wellbore)	Tool Name	Remarks
1	0.00	1,800.00	Design #1 (Wellbore #1)	SRC Energy_ISCWSA REV 2
				Fixed:v2:crustal field declinatio
2	1,800.00	15,583.33	Design #1 (Wellbore #1)	SRC Energy_ISCWSA REV 2
				Fixed:v2:Rockies, crustal dec +

Plan Sections										
Measured Depth (usft)	Inclination (°)	Azimuth (°)	Vertical Depth (usft)	+N/-S (usft)	+E/-W (usft)	Dogleg Rate (°/100usft)	Build Rate (°/100usft)	Turn Rate (°/100usft)	TFO (°)	Target
0.00	0.00	0.00	0.00	0.00	0.00	0.00	0.00	0.00	0.00	
200.00	0.00	0.00	200.00	0.00	0.00	0.00	0.00	0.00	0.00	
566.00	7.32	108.20	565.01	-7.29	22.18	2.00	2.00	0.00	108.20	
6,701.83	7.32	108.20	6,650.83	-251.47	764.84	0.00	0.00	0.00	0.00	
7,778.32	89.93	270.13	7,364.00	-278.35	133.66	9.00	7.67	15.04	161.80	
15,583.33	89.93	270.13	7,374.00	-260.00	-7,671.32	0.00	0.00	0.00	0.00	SANFORD 4C-30-M_

Hewlett-Packard

Planning Report

Database:	EDM 5000.14 Single User Db	Local Co-ordinate Reference:	Well SANFORD 4C-30-M
Company:	SRC ENERGY	TVD Reference:	RKB = 4' @ 4908.00usft (RIG)
Project:	WELD COUNTY (NAD83, TRUE NORTH)	MD Reference:	RKB = 4' @ 4908.00usft (RIG)
Site:	5N-66W-29 SANFORD 21-29 PAD	North Reference:	True
Well:	SANFORD 4C-30-M	Survey Calculation Method:	Minimum Curvature
Wellbore:	Wellbore #1		
Design:	Design #1		

Planned Survey									
Measured Depth (usft)	Inclination (°)	Azimuth (°)	Vertical Depth (usft)	+N/-S (usft)	+E/-W (usft)	Vertical Section (usft)	Dogleg Rate (°/100usft)	Build Rate (°/100usft)	Turn Rate (°/100usft)
0.00	0.00	0.00	0.00	0.00	0.00	0.00	0.00	0.00	0.00
100.00	0.00	0.00	100.00	0.00	0.00	0.00	0.00	0.00	0.00
200.00	0.00	0.00	200.00	0.00	0.00	0.00	0.00	0.00	0.00
Begin Nudge @ 200.00ft									
300.00	2.00	108.20	299.98	-0.55	1.66	-1.64	2.00	2.00	0.00
400.00	4.00	108.20	399.84	-2.18	6.63	-6.55	2.00	2.00	0.00
500.00	6.00	108.20	499.45	-4.90	14.91	-14.73	2.00	2.00	0.00
566.00	7.32	108.20	565.01	-7.29	22.18	-21.92	2.00	2.00	0.00
Hold Tangent @ 566.00ft									
600.00	7.32	108.20	598.73	-8.65	26.30	-25.99	0.00	0.00	0.00
700.00	7.32	108.20	697.91	-12.62	38.40	-37.95	0.00	0.00	0.00
800.00	7.32	108.20	797.10	-16.60	50.50	-49.91	0.00	0.00	0.00
900.00	7.32	108.20	896.28	-20.58	62.61	-61.87	0.00	0.00	0.00
1,000.00	7.32	108.20	995.47	-24.56	74.71	-73.83	0.00	0.00	0.00
1,100.00	7.32	108.20	1,094.65	-28.54	86.81	-85.80	0.00	0.00	0.00
1,200.00	7.32	108.20	1,193.84	-32.52	98.92	-97.76	0.00	0.00	0.00
1,300.00	7.32	108.20	1,293.02	-36.50	111.02	-109.72	0.00	0.00	0.00
1,400.00	7.32	108.20	1,392.21	-40.48	123.12	-121.68	0.00	0.00	0.00
1,500.00	7.32	108.20	1,491.39	-44.46	135.23	-133.64	0.00	0.00	0.00
1,600.00	7.32	108.20	1,590.58	-48.44	147.33	-145.61	0.00	0.00	0.00
1,700.00	7.32	108.20	1,689.76	-52.42	159.44	-157.57	0.00	0.00	0.00
1,800.00	7.32	108.20	1,788.95	-56.40	171.54	-169.53	0.00	0.00	0.00
1,811.14	7.32	108.20	1,800.00	-56.84	172.89	-170.86	0.00	0.00	0.00
9 5/8"									
1,900.00	7.32	108.20	1,888.13	-60.38	183.64	-181.49	0.00	0.00	0.00
2,000.00	7.32	108.20	1,987.32	-64.36	195.75	-193.45	0.00	0.00	0.00
2,100.00	7.32	108.20	2,086.50	-68.34	207.85	-205.42	0.00	0.00	0.00
2,200.00	7.32	108.20	2,185.69	-72.32	219.95	-217.38	0.00	0.00	0.00
2,300.00	7.32	108.20	2,284.87	-76.30	232.06	-229.34	0.00	0.00	0.00
2,400.00	7.32	108.20	2,384.06	-80.28	244.16	-241.30	0.00	0.00	0.00
2,500.00	7.32	108.20	2,483.24	-84.26	256.26	-253.26	0.00	0.00	0.00
2,600.00	7.32	108.20	2,582.43	-88.24	268.37	-265.23	0.00	0.00	0.00
2,700.00	7.32	108.20	2,681.61	-92.21	280.47	-277.19	0.00	0.00	0.00
2,800.00	7.32	108.20	2,780.80	-96.19	292.58	-289.15	0.00	0.00	0.00
2,900.00	7.32	108.20	2,879.98	-100.17	304.68	-301.11	0.00	0.00	0.00
3,000.00	7.32	108.20	2,979.17	-104.15	316.78	-313.07	0.00	0.00	0.00
3,100.00	7.32	108.20	3,078.35	-108.13	328.89	-325.04	0.00	0.00	0.00
3,200.00	7.32	108.20	3,177.54	-112.11	340.99	-337.00	0.00	0.00	0.00
3,300.00	7.32	108.20	3,276.72	-116.09	353.09	-348.96	0.00	0.00	0.00
3,400.00	7.32	108.20	3,375.91	-120.07	365.20	-360.92	0.00	0.00	0.00
3,500.00	7.32	108.20	3,475.09	-124.05	377.30	-372.88	0.00	0.00	0.00
3,600.00	7.32	108.20	3,574.28	-128.03	389.41	-384.85	0.00	0.00	0.00
3,700.00	7.32	108.20	3,673.46	-132.01	401.51	-396.81	0.00	0.00	0.00
3,800.00	7.32	108.20	3,772.65	-135.99	413.61	-408.77	0.00	0.00	0.00
3,900.00	7.32	108.20	3,871.83	-139.97	425.72	-420.73	0.00	0.00	0.00
4,000.00	7.32	108.20	3,971.02	-143.95	437.82	-432.69	0.00	0.00	0.00
4,100.00	7.32	108.20	4,070.20	-147.93	449.92	-444.65	0.00	0.00	0.00
4,200.00	7.32	108.20	4,169.39	-151.91	462.03	-456.62	0.00	0.00	0.00
4,300.00	7.32	108.20	4,268.57	-155.89	474.13	-468.58	0.00	0.00	0.00
4,400.00	7.32	108.20	4,367.76	-159.87	486.23	-480.54	0.00	0.00	0.00
4,500.00	7.32	108.20	4,466.94	-163.85	498.34	-492.50	0.00	0.00	0.00
4,600.00	7.32	108.20	4,566.13	-167.82	510.44	-504.46	0.00	0.00	0.00
4,700.00	7.32	108.20	4,665.31	-171.80	522.55	-516.43	0.00	0.00	0.00

Hewlett-Packard

Planning Report

Database:	EDM 5000.14 Single User Db	Local Co-ordinate Reference:	Well SANFORD 4C-30-M
Company:	SRC ENERGY	TVD Reference:	RKB = 4' @ 4908.00usft (RIG)
Project:	WELD COUNTY (NAD83, TRUE NORTH)	MD Reference:	RKB = 4' @ 4908.00usft (RIG)
Site:	5N-66W-29 SANFORD 21-29 PAD	North Reference:	True
Well:	SANFORD 4C-30-M	Survey Calculation Method:	Minimum Curvature
Wellbore:	Wellbore #1		
Design:	Design #1		

Planned Survey									
Measured Depth (usft)	Inclination (°)	Azimuth (°)	Vertical Depth (usft)	+N/-S (usft)	+E/-W (usft)	Vertical Section (usft)	Dogleg Rate (°/100usft)	Build Rate (°/100usft)	Turn Rate (°/100usft)
4,800.00	7.32	108.20	4,764.50	-175.78	534.65	-528.39	0.00	0.00	0.00
4,900.00	7.32	108.20	4,863.68	-179.76	546.75	-540.35	0.00	0.00	0.00
5,000.00	7.32	108.20	4,962.87	-183.74	558.86	-552.31	0.00	0.00	0.00
5,100.00	7.32	108.20	5,062.05	-187.72	570.96	-564.27	0.00	0.00	0.00
5,200.00	7.32	108.20	5,161.24	-191.70	583.06	-576.24	0.00	0.00	0.00
5,300.00	7.32	108.20	5,260.42	-195.68	595.17	-588.20	0.00	0.00	0.00
5,400.00	7.32	108.20	5,359.61	-199.66	607.27	-600.16	0.00	0.00	0.00
5,500.00	7.32	108.20	5,458.79	-203.64	619.38	-612.12	0.00	0.00	0.00
5,600.00	7.32	108.20	5,557.98	-207.62	631.48	-624.08	0.00	0.00	0.00
5,700.00	7.32	108.20	5,657.16	-211.60	643.58	-636.05	0.00	0.00	0.00
5,800.00	7.32	108.20	5,756.35	-215.58	655.69	-648.01	0.00	0.00	0.00
5,900.00	7.32	108.20	5,855.53	-219.56	667.79	-659.97	0.00	0.00	0.00
6,000.00	7.32	108.20	5,954.72	-223.54	679.89	-671.93	0.00	0.00	0.00
6,100.00	7.32	108.20	6,053.90	-227.52	692.00	-683.89	0.00	0.00	0.00
6,200.00	7.32	108.20	6,153.09	-231.50	704.10	-695.86	0.00	0.00	0.00
6,300.00	7.32	108.20	6,252.27	-235.48	716.20	-707.82	0.00	0.00	0.00
6,400.00	7.32	108.20	6,351.46	-239.46	728.31	-719.78	0.00	0.00	0.00
6,500.00	7.32	108.20	6,450.64	-243.44	740.41	-731.74	0.00	0.00	0.00
6,600.00	7.32	108.20	6,549.83	-247.41	752.52	-743.70	0.00	0.00	0.00
6,700.00	7.32	108.20	6,649.01	-251.39	764.62	-755.66	0.00	0.00	0.00
6,701.83	7.32	108.20	6,650.83	-251.47	764.84	-755.88	0.00	0.00	0.00
KOP @ 6701.83ft :: DLS = 9°/100'									
6,800.00	2.95	219.62	6,748.73	-255.38	769.18	-760.09	9.00	-4.45	113.50
6,900.00	11.11	258.44	6,847.93	-259.30	758.07	-748.85	9.00	8.16	38.82
7,000.00	20.00	263.86	6,944.17	-263.07	731.57	-722.24	9.00	8.89	5.42
7,100.00	28.96	266.01	7,035.09	-266.59	690.33	-680.90	9.00	8.96	2.15
7,200.00	37.94	267.21	7,118.44	-269.78	635.36	-625.86	9.00	8.98	1.20
7,300.00	46.92	268.00	7,192.18	-272.56	568.02	-558.46	9.00	8.98	0.79
7,400.00	55.91	268.59	7,254.49	-274.85	489.97	-480.38	9.00	8.99	0.59
7,500.00	64.90	269.07	7,303.82	-276.61	403.12	-393.52	9.00	8.99	0.48
7,600.00	73.89	269.48	7,338.98	-277.78	309.62	-300.04	9.00	8.99	0.41
7,700.00	82.88	269.85	7,359.09	-278.35	211.77	-202.22	9.00	8.99	0.37
7,778.32	89.93	270.13	7,364.00	-278.35	133.66	-124.15	9.00	8.99	0.36
End Build @ 7778.32ft - Production Zone Top									
7,800.00	89.93	270.13	7,364.03	-278.30	111.98	-102.49	0.00	0.00	0.00
7,900.00	89.93	270.13	7,364.15	-278.07	11.98	-2.55	0.00	0.00	0.00
8,000.00	89.93	270.13	7,364.28	-277.83	-88.02	97.38	0.00	0.00	0.00
8,100.00	89.93	270.13	7,364.41	-277.60	-188.02	197.32	0.00	0.00	0.00
8,200.00	89.93	270.13	7,364.54	-277.36	-288.02	297.25	0.00	0.00	0.00
8,300.00	89.93	270.13	7,364.67	-277.13	-388.02	397.19	0.00	0.00	0.00
8,400.00	89.93	270.13	7,364.79	-276.89	-488.02	497.12	0.00	0.00	0.00
8,500.00	89.93	270.13	7,364.92	-276.66	-588.02	597.05	0.00	0.00	0.00
8,600.00	89.93	270.13	7,365.05	-276.42	-688.02	696.99	0.00	0.00	0.00
8,700.00	89.93	270.13	7,365.18	-276.19	-788.02	796.92	0.00	0.00	0.00
8,800.00	89.93	270.13	7,365.31	-275.95	-888.02	896.86	0.00	0.00	0.00
8,900.00	89.93	270.13	7,365.43	-275.72	-988.02	996.79	0.00	0.00	0.00
9,000.00	89.93	270.13	7,365.56	-275.48	-1,088.02	1,096.73	0.00	0.00	0.00
9,100.00	89.93	270.13	7,365.69	-275.25	-1,188.02	1,196.66	0.00	0.00	0.00
9,200.00	89.93	270.13	7,365.82	-275.01	-1,288.02	1,296.59	0.00	0.00	0.00
9,300.00	89.93	270.13	7,365.95	-274.78	-1,388.02	1,396.53	0.00	0.00	0.00
9,400.00	89.93	270.13	7,366.08	-274.54	-1,488.02	1,496.46	0.00	0.00	0.00
9,500.00	89.93	270.13	7,366.20	-274.31	-1,588.02	1,596.40	0.00	0.00	0.00
9,600.00	89.93	270.13	7,366.33	-274.07	-1,688.02	1,696.33	0.00	0.00	0.00
9,700.00	89.93	270.13	7,366.46	-273.84	-1,788.02	1,796.27	0.00	0.00	0.00

Hewlett-Packard

Planning Report

Database:	EDM 5000.14 Single User Db	Local Co-ordinate Reference:	Well SANFORD 4C-30-M
Company:	SRC ENERGY	TVD Reference:	RKB = 4' @ 4908.00usft (RIG)
Project:	WELD COUNTY (NAD83, TRUE NORTH)	MD Reference:	RKB = 4' @ 4908.00usft (RIG)
Site:	5N-66W-29 SANFORD 21-29 PAD	North Reference:	True
Well:	SANFORD 4C-30-M	Survey Calculation Method:	Minimum Curvature
Wellbore:	Wellbore #1		
Design:	Design #1		

Planned Survey										
Measured Depth (usft)	Inclination (°)	Azimuth (°)	Vertical Depth (usft)	+N/-S (usft)	+E/-W (usft)	Vertical Section (usft)	Dogleg Rate (°/100usft)	Build Rate (°/100usft)	Turn Rate (°/100usft)	
9,800.00	89.93	270.13	7,366.59	-273.60	-1,888.02	1,896.20	0.00	0.00	0.00	
9,900.00	89.93	270.13	7,366.72	-273.37	-1,988.02	1,996.13	0.00	0.00	0.00	
10,000.00	89.93	270.13	7,366.84	-273.13	-2,088.01	2,096.07	0.00	0.00	0.00	
10,100.00	89.93	270.13	7,366.97	-272.90	-2,188.01	2,196.00	0.00	0.00	0.00	
10,200.00	89.93	270.13	7,367.10	-272.66	-2,288.01	2,295.94	0.00	0.00	0.00	
10,300.00	89.93	270.13	7,367.23	-272.42	-2,388.01	2,395.87	0.00	0.00	0.00	
10,400.00	89.93	270.13	7,367.36	-272.19	-2,488.01	2,495.81	0.00	0.00	0.00	
10,500.00	89.93	270.13	7,367.49	-271.95	-2,588.01	2,595.74	0.00	0.00	0.00	
10,600.00	89.93	270.13	7,367.61	-271.72	-2,688.01	2,695.67	0.00	0.00	0.00	
10,700.00	89.93	270.13	7,367.74	-271.48	-2,788.01	2,795.61	0.00	0.00	0.00	
10,800.00	89.93	270.13	7,367.87	-271.25	-2,888.01	2,895.54	0.00	0.00	0.00	
10,900.00	89.93	270.13	7,368.00	-271.01	-2,988.01	2,995.48	0.00	0.00	0.00	
11,000.00	89.93	270.13	7,368.13	-270.78	-3,088.01	3,095.41	0.00	0.00	0.00	
11,100.00	89.93	270.13	7,368.25	-270.54	-3,188.01	3,195.35	0.00	0.00	0.00	
11,200.00	89.93	270.13	7,368.38	-270.31	-3,288.01	3,295.28	0.00	0.00	0.00	
11,300.00	89.93	270.13	7,368.51	-270.07	-3,388.01	3,395.21	0.00	0.00	0.00	
11,400.00	89.93	270.13	7,368.64	-269.84	-3,488.01	3,495.15	0.00	0.00	0.00	
11,500.00	89.93	270.13	7,368.77	-269.60	-3,588.01	3,595.08	0.00	0.00	0.00	
11,600.00	89.93	270.13	7,368.90	-269.37	-3,688.01	3,695.02	0.00	0.00	0.00	
11,700.00	89.93	270.13	7,369.02	-269.13	-3,788.01	3,794.95	0.00	0.00	0.00	
11,800.00	89.93	270.13	7,369.15	-268.90	-3,888.01	3,894.89	0.00	0.00	0.00	
11,900.00	89.93	270.13	7,369.28	-268.66	-3,988.01	3,994.82	0.00	0.00	0.00	
12,000.00	89.93	270.13	7,369.41	-268.43	-4,088.01	4,094.75	0.00	0.00	0.00	
12,100.00	89.93	270.13	7,369.54	-268.19	-4,188.01	4,194.69	0.00	0.00	0.00	
12,200.00	89.93	270.13	7,369.66	-267.96	-4,288.01	4,294.62	0.00	0.00	0.00	
12,300.00	89.93	270.13	7,369.79	-267.72	-4,388.01	4,394.56	0.00	0.00	0.00	
12,400.00	89.93	270.13	7,369.92	-267.49	-4,488.01	4,494.49	0.00	0.00	0.00	
12,500.00	89.93	270.13	7,370.05	-267.25	-4,588.01	4,594.43	0.00	0.00	0.00	
12,600.00	89.93	270.13	7,370.18	-267.02	-4,688.01	4,694.36	0.00	0.00	0.00	
12,700.00	89.93	270.13	7,370.30	-266.78	-4,788.01	4,794.29	0.00	0.00	0.00	
12,800.00	89.93	270.13	7,370.43	-266.55	-4,888.00	4,894.23	0.00	0.00	0.00	
12,900.00	89.93	270.13	7,370.56	-266.31	-4,988.00	4,994.16	0.00	0.00	0.00	
13,000.00	89.93	270.13	7,370.69	-266.08	-5,088.00	5,094.10	0.00	0.00	0.00	
13,100.00	89.93	270.13	7,370.82	-265.84	-5,188.00	5,194.03	0.00	0.00	0.00	
13,200.00	89.93	270.13	7,370.95	-265.61	-5,288.00	5,293.97	0.00	0.00	0.00	
13,300.00	89.93	270.13	7,371.07	-265.37	-5,388.00	5,393.90	0.00	0.00	0.00	
13,400.00	89.93	270.13	7,371.20	-265.13	-5,488.00	5,493.83	0.00	0.00	0.00	
13,500.00	89.93	270.13	7,371.33	-264.90	-5,588.00	5,593.77	0.00	0.00	0.00	
13,600.00	89.93	270.13	7,371.46	-264.66	-5,688.00	5,693.70	0.00	0.00	0.00	
13,700.00	89.93	270.13	7,371.59	-264.43	-5,788.00	5,793.64	0.00	0.00	0.00	
13,800.00	89.93	270.13	7,371.71	-264.19	-5,888.00	5,893.57	0.00	0.00	0.00	
13,900.00	89.93	270.13	7,371.84	-263.96	-5,988.00	5,993.51	0.00	0.00	0.00	
14,000.00	89.93	270.13	7,371.97	-263.72	-6,088.00	6,093.44	0.00	0.00	0.00	
14,100.00	89.93	270.13	7,372.10	-263.49	-6,188.00	6,193.37	0.00	0.00	0.00	
14,200.00	89.93	270.13	7,372.23	-263.25	-6,288.00	6,293.31	0.00	0.00	0.00	
14,300.00	89.93	270.13	7,372.36	-263.02	-6,388.00	6,393.24	0.00	0.00	0.00	
14,400.00	89.93	270.13	7,372.48	-262.78	-6,488.00	6,493.18	0.00	0.00	0.00	
14,500.00	89.93	270.13	7,372.61	-262.55	-6,588.00	6,593.11	0.00	0.00	0.00	
14,600.00	89.93	270.13	7,372.74	-262.31	-6,688.00	6,693.05	0.00	0.00	0.00	
14,700.00	89.93	270.13	7,372.87	-262.08	-6,788.00	6,792.98	0.00	0.00	0.00	
14,800.00	89.93	270.13	7,373.00	-261.84	-6,888.00	6,892.91	0.00	0.00	0.00	
14,900.00	89.93	270.13	7,373.12	-261.61	-6,988.00	6,992.85	0.00	0.00	0.00	
15,000.00	89.93	270.13	7,373.25	-261.37	-7,088.00	7,092.78	0.00	0.00	0.00	
15,100.00	89.93	270.13	7,373.38	-261.14	-7,188.00	7,192.72	0.00	0.00	0.00	

Hewlett-Packard

Planning Report

Database:	EDM 5000.14 Single User Db	Local Co-ordinate Reference:	Well SANFORD 4C-30-M
Company:	SRC ENERGY	TVD Reference:	RKB = 4' @ 4908.00usft (RIG)
Project:	WELD COUNTY (NAD83, TRUE NORTH)	MD Reference:	RKB = 4' @ 4908.00usft (RIG)
Site:	5N-66W-29 SANFORD 21-29 PAD	North Reference:	True
Well:	SANFORD 4C-30-M	Survey Calculation Method:	Minimum Curvature
Wellbore:	Wellbore #1		
Design:	Design #1		

Planned Survey									
Measured Depth (usft)	Inclination (°)	Azimuth (°)	Vertical Depth (usft)	+N/-S (usft)	+E/-W (usft)	Vertical Section (usft)	Dogleg Rate (°/100usft)	Build Rate (°/100usft)	Turn Rate (°/100usft)
15,200.00	89.93	270.13	7,373.51	-260.90	-7,288.00	7,292.65	0.00	0.00	0.00
15,300.00	89.93	270.13	7,373.64	-260.67	-7,388.00	7,392.59	0.00	0.00	0.00
15,400.00	89.93	270.13	7,373.77	-260.43	-7,488.00	7,492.52	0.00	0.00	0.00
15,500.00	89.93	270.13	7,373.89	-260.20	-7,588.00	7,592.45	0.00	0.00	0.00
15,583.33	89.93	270.13	7,374.00	-260.00	-7,671.32	7,675.73	0.00	0.00	0.00
TD Well @ 15583.33ft									

Casing Points					
Measured Depth (usft)	Vertical Depth (usft)	Name		Casing Diameter (")	Hole Diameter (")
1,811.14	1,800.00	9 5/8"		9-5/8	13-1/2
7,778.32	7,364.00	Production Zone Top		5-1/2	8-1/2

Plan Annotations				
Measured Depth (usft)	Vertical Depth (usft)	Local Coordinates		Comment
		+N/-S (usft)	+E/-W (usft)	
200.00	200.00	0.00	0.00	Begin Nudge @ 200.00ft
566.00	565.01	-7.29	22.18	Hold Tangent @ 566.00ft
6,701.83	6,650.83	-251.47	764.84	KOP @ 6701.83ft :: DLS = 9°/100'
7,778.32	7,364.00	-278.35	133.66	End Build @ 7778.32ft
15,583.33	7,374.00	-260.00	-7,671.32	TD Well @ 15583.33ft