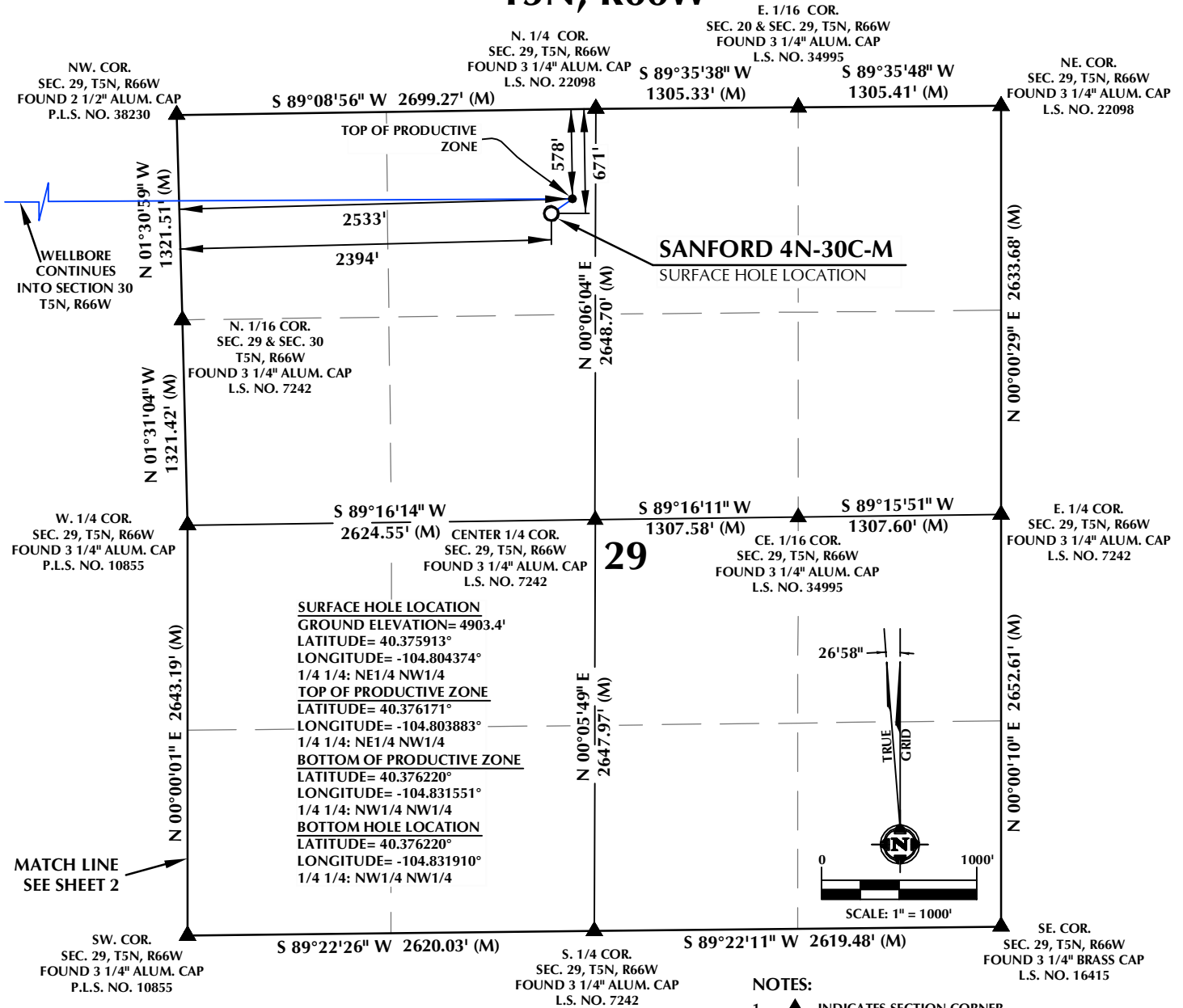


# T5N, R66W



## CERTIFICATE OF SURVEYOR:

THIS IS TO CERTIFY THAT THE ABOVE PLAT WAS PREPARED FROM FIELD NOTES OF ACTUAL SURVEY MADE BY ME OR UNDER MY SUPERVISION AND THAT THE SAME ARE TRUE AND CORRECT TO THE BEST OF MY KNOWLEDGE AND BELIEF.

THIS CERTIFICATE DOES NOT REPRESENT A LAND SURVEY PLAT OR IMPROVEMENT SURVEY PLAT AS DEFINED BY C.S. 19-51-302 AND CANNOT BE RELIED UPON TO DETERMINE OWNERSHIP.

*Randall K. French*  
 RANDALL K. FRENCH  
 PROFESSIONAL LAND SURVEYOR  
 COLORADO REGISTRATION NUMBER: 38512

9/14/18  
 RANDALL K. FRENCH  
 PROFESSIONAL LAND SURVEYOR  
 COLORADO REGISTRATION NUMBER: 38512

**NOTICE:**  
 ACCORDING TO COLORADO STATE LAW YOU MUST COMMENCE A LEGAL ACTION BASED UPON ANY DEFECT IN THIS SURVEY WITHIN THREE YEARS AFTER YOU FIRST DISCOVER SUCH DEFECT. IN NO EVENT MAY ANY ACTION BASED UPON ANY DEFECT IN THIS SURVEY BE COMMENCED MORE THAN TEN YEARS FROM THE DATE ON THE CERTIFICATION SHOWN HEREON.

## NOTES:

- ▲ INDICATES SECTION CORNER.
- ⊙ INDICATES CALCULATED CORNER.
- DRAWING LATITUDE AND LONGITUDE COORDINATES ARE NAD 83 (2011)(EPOCH:2010).
- ELEVATION BASED ON NAVD88 (GEOID12B).
- BASIS OF BEARING DERIVED FROM COLORADO COORDINATE SYSTEM OF 1983 NORTH ZONE.
- ALL MEASURED DISTANCES ARE GRID.
- COMBINED SCALE FACTOR: .99972855 CALCULATED FROM THE E. 1/4 CORNER OF SECTION 29, T5N, R66W.
- OPERATOR: ROB WILSON / PDOP = 1.5.
- SEE ADDENDUM TO WELL LOCATION CERTIFICATE FOR EXISTING IMPROVEMENTS WITHIN 500' OF THE WELL PAD.
- WELL FOOTAGES ARE MEASURED AT RIGHT ANGLES TO THE SECTION LINES.
- THE BOTTOM HOLE LOCATION BEARS S89°41'24"W, 7809' FROM THE TOP OF PRODUCTIVE ZONE.

## WELL PAD - SANFORD 21-29 PAD

SANFORD 4N-30C-M  
 WELL LOCATION CERTIFICATE  
 671' FNL & 2394' FWL NENW (SURFACE HOLE LOCATION)  
 578' FNL & 2533' FWL NENW (TOP OF PRODUCTIVE ZONE)  
 LOCATED IN SECTION 29  
 565' FNL & 150' FWL LOT 2 (NWNW) (BOTTOM OF PRODUCTIVE ZONE)  
 565' FNL & 50' FWL LOT 2 (NWNW) (BOTTOM HOLE LOCATION)  
 LOCATED IN SECTION 30  
 T5N, R66W, 6TH P.M.  
 WELD COUNTY, COLORADO



**SRC ENERGY**

1675 Broadway, Suite 2600  
 Denver, Colorado 80202



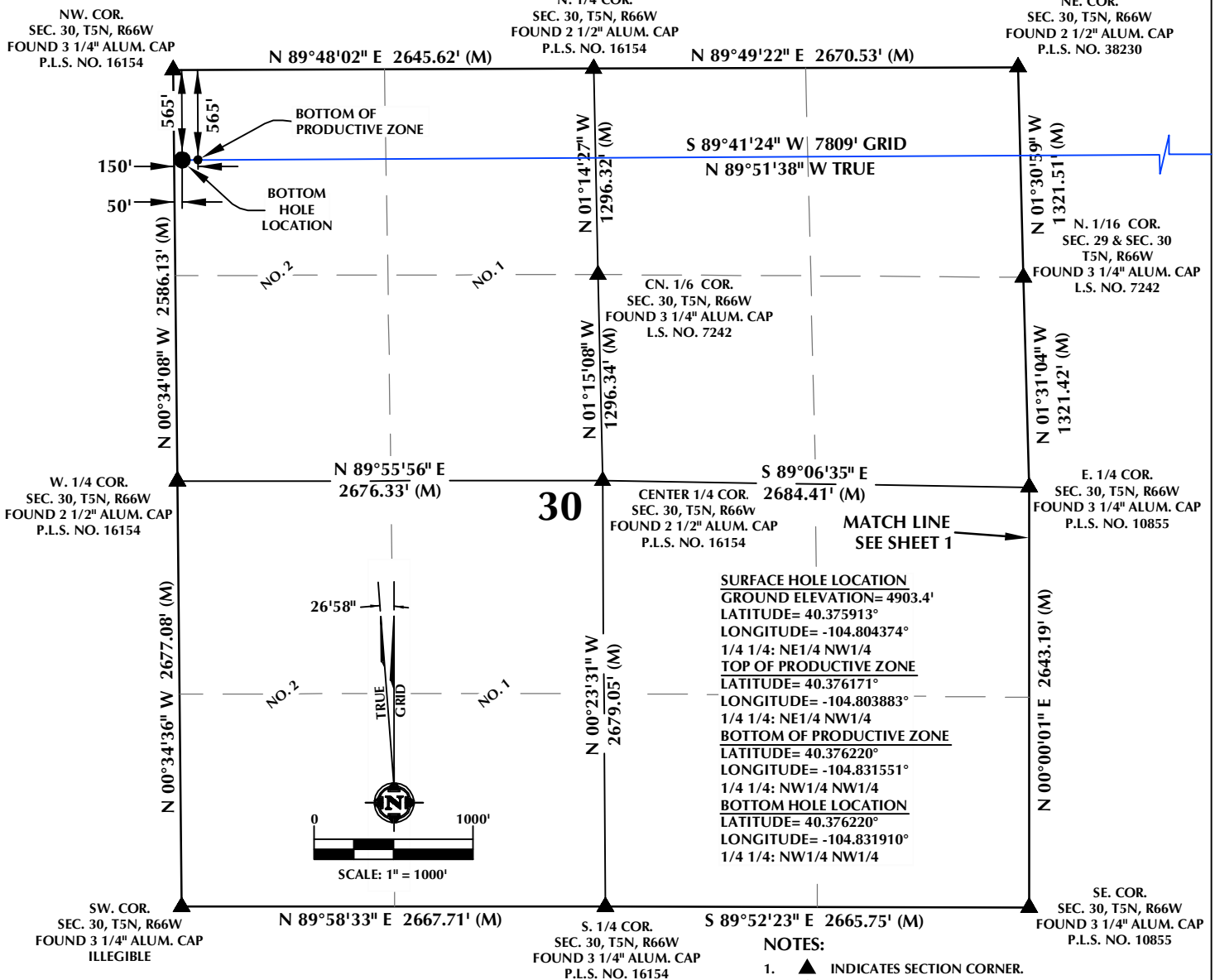
## CONSULTING, LLC

**SHERIDAN OFFICE**  
 1095 Saberton Avenue  
 Sheridan, Wyoming 82801  
 Phone 307-674-0609

**LOVELAND OFFICE**  
 6706 North Franklin Avenue  
 Loveland, Colorado 80538  
 Phone 970-776-4331

|               |         |                |         |           |
|---------------|---------|----------------|---------|-----------|
| DRAFTED BY:   | LMO     | CHECKED BY:    | RKF     | SHEET NO: |
| DATE DRAFTED: | 9/14/18 | DATE SURVEYED: | 8/30/18 | 1         |
| REVISED:      |         | FILE NAME:     | 17-232  | 1 OF 2    |

# T5N, R66W



## CERTIFICATE OF SURVEYOR:

THIS IS TO CERTIFY THAT THE ABOVE PLAT WAS PREPARED FROM FIELD NOTES OF ACTUAL SURVEY MADE BY ME OR UNDER MY SUPERVISION AND THAT THE SAME IS TRUE AND CORRECT TO THE BEST OF MY KNOWLEDGE AND BELIEF. THIS CERTIFICATE DOES NOT REPRESENT A LAND SURVEY PLAT OR IMPROVEMENT SURVEY PLAT AS DEFINED BY C.R.S. 19-51-102 AND CANNOT BE RELIED UPON TO DETERMINE OWNERSHIP.

*Randall K. French*  
 RANDALL K. FRENCH  
 PROFESSIONAL LAND SURVEYOR  
 COLORADO REGISTRATION NUMBER: 38512  
 9/14/18

**NOTICE:**  
 ACCORDING TO COLORADO STATE LAW YOU MUST COMMENCE A LEGAL ACTION BASED UPON ANY DEFECT IN THIS SURVEY WITHIN THREE YEARS AFTER YOU FIRST DISCOVER SUCH DEFECT. IN NO EVENT MAY ANY ACTION BASED UPON ANY DEFECT IN THIS SURVEY BE COMMENCED MORE THAN TEN YEARS FROM THE DATE ON THE CERTIFICATION SHOWN HEREON.

## WELL DISTANCES:

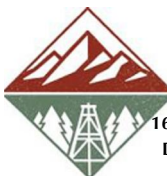
BUILDING: ±439' N  
 BUILDING UNIT: ±1934' N  
 HIGH OCCUPANCY BUILDING UNIT: ±4933' E  
 DESIGNATED OUTSIDE ACTIVITY AREA: 5280'+  
 PUBLIC ROAD: ±272' E  
 ABOVE GROUND UTILITY: ±255' E  
 RAILROAD: 5280'+  
 PROPERTY LINE: ±286' E

## NOTES:

- ▲ INDICATES SECTION CORNER.
- INDICATES CALCULATED CORNER.
- DRAWING LATITUDE AND LONGITUDE COORDINATES ARE NAD 83 (2011)(EPOCH:2010).
- ELEVATION BASED ON NAVD88 (GEOID12B).
- BASIS OF BEARING DERIVED FROM COLORADO COORDINATE SYSTEM OF 1983 NORTH ZONE.
- ALL MEASURED DISTANCES ARE GRID.
- COMBINED SCALE FACTOR: .99972855 CALCULATED FROM THE E. 1/4 CORNER OF SECTION 29, T5N, R66W.
- OPERATOR: ROB WILSON / PDOP = 1.5.
- SEE ADDENDUM TO WELL LOCATION CERTIFICATE FOR EXISTING IMPROVEMENTS WITHIN 500' OF THE WELL PAD.
- WELL FOOTAGES ARE MEASURED AT RIGHT ANGLES TO THE SECTION LINES.
- THE BOTTOM HOLE LOCATION BEARS S89°41'24"W, 7809' FROM THE TOP OF PRODUCTIVE ZONE.
- NO. 1 & NO. 2 AS SHOWN HEREON ARE GOVERNMENT LOTS 1 & 2 PER THE ORIGINAL GLO SURVEY.

## WELL PAD - SANFORD 21-29 PAD

SANFORD 4N-30C-M  
 WELL LOCATION CERTIFICATE  
 671' FNL & 2394' FWL LOT 2 (NWNW) (SURFACE HOLE LOCATION)  
 578' FNL & 2533' FWL LOT 2 (NWNW) (TOP OF PRODUCTIVE ZONE)  
 LOCATED IN SECTION 29  
 565' FNL & 150' FWL LOT 2 (NWNW) (BOTTOM OF PRODUCTIVE ZONE)  
 565' FNL & 50' FWL LOT 2 (NWNW) (BOTTOM HOLE LOCATION)  
 LOCATED IN SECTION 30  
 T5N, R66W, 6TH P.M.  
 WELD COUNTY, COLORADO



**SRC ENERGY**

1675 Broadway, Suite 2600  
 Denver, Colorado 80202



## CONSULTING, LLC

**SHERIDAN OFFICE**  
 1095 Saberton Avenue  
 Sheridan, Wyoming 82801  
 Phone 307-674-0609

**LOVELAND OFFICE**  
 6706 North Franklin Avenue  
 Loveland, Colorado 80538  
 Phone 970-776-4331

|               |         |                |         |           |
|---------------|---------|----------------|---------|-----------|
| DRAFTED BY:   | LMO     | CHECKED BY:    | RKF     | SHEET NO: |
| DATE DRAFTED: | 9/14/18 | DATE SURVEYED: | 8/30/18 | 2         |
| REVISED:      |         | FILE NAME:     | 17-232  | 2 OF 2    |