



Kerr-McGee Oil & Gas Onshore LP

A subsidiary of Anadarko Petroleum Corporation

1099 18th Street
Denver, CO 80202
720-929-6000

December 18, 2018

Julie Murphy
Director, Colorado Oil and Gas Conservation Commission
Department of Natural Resources
The Chancery Building
1120 Lincoln Street, Suite 801
Denver, CO 80203

Re: **30 Day Certification Letter - 318A.e**
FARLEY 23-3HZ (Doc No. 401807293)
Township 3 North, Range 66 West
Section 23: SWSW
Unit Acreage: 240 Acres
Proposed Spacing Unit:
03N66W SEC 23: SWSW;
03N66W SEC 26: W2W2;
03N66W SEC 35: NWNW
Weld County, Colorado

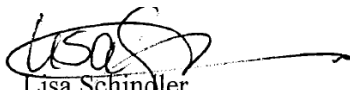
Dear Director Murphy:

Kerr McGee Oil and Gas Onshore LP ("KMG") hereby certifies that KMG owns one hundred percent (100%) of the leasehold interest in the mineral rights in the proposed spacing unit. KMG hereby respectfully requests approval of this boundary well.

If you have any questions or issues regarding this permit, please contact me at (720) 929-3091.

Sincerely,

Kerr-McGee Oil and Gas Onshore LP

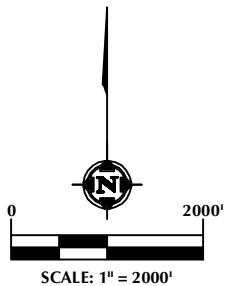
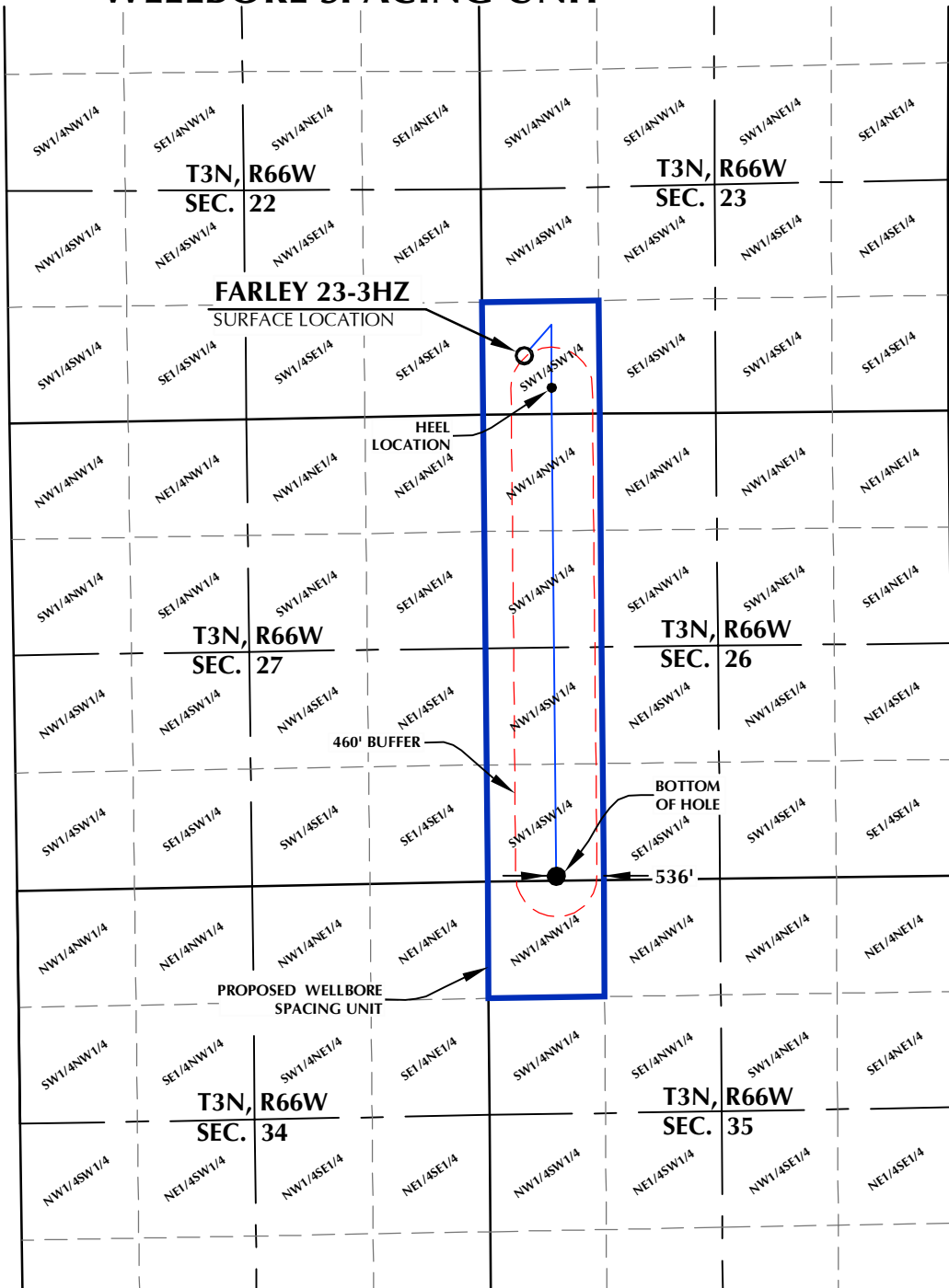

Lisa Schindler
Sr. Regulatory Analyst

Enclosure

DISTANCE FROM COMPLETED
PORTION OF WELLBORE TO
NEAREST UNIT BOUNDARY= 536'

FARLEY 23-3HZ WELLBORE SPACING UNIT

SURFACE LOCATION: NAD 83
GROUND ELEVATION= 4940.3'
LATITUDE= 40.205288°
LONGITUDE= -104.752102°
HEEL LOCATION: NAD 83
LATITUDE= 40.204284°
LONGITUDE= -104.750998°
BOTTOM HOLE LOCATION: NAD 83
LATITUDE= 40.189102°
LONGITUDE= -104.750974°
LATITUDE= 40°11'20.767"
LONGITUDE= -104°45'03.506"



NOTES:

1. DRAWING LATITUDE AND LONGITUDE COORDINATES ARE NAD 83 (2011)(EPOCH:2010).
2. ELEVATION BASED ON NAVD88 (GEOID12B).
3. BASIS OF BEARING DERIVED FROM COLORADO COORDINATE SYSTEM OF 1983 NORTH ZONE.
4. ALL MEASURED DISTANCES ARE GRID.
COMBINED SCALE FACTOR: .99972399 CALCULATED FROM THE SW. CORNER OF SECTION 23, T3N, R66W.

WELL PAD - FARLEY 34-23HZ

FARLEY 23-3HZ
WELLBORE SPACING UNIT
666' FSL & 470' FWL SWSW (SURFACE)
300' FSL & 778' FWL SWSW (HEEL)
LOCATED IN SECTION 23
50' FSL & 780' FWL SWSW (BOTTOM)
LOCATED IN SECTION 26
T3N, R66W, 6TH P.M.
WELD COUNTY, COLORADO

**Kerr-McGee Oil &
Gas Onshore L.P.**
1099 18th Street
Denver, Colorado 80202



CONSULTING, LLC

SHERIDAN OFFICE
1095 Saberton Avenue
Sheridan, Wyoming 82801
Phone 307-674-0609

LOVELAND OFFICE
6706 North Franklin Avenue
Loveland, Colorado 80538
Phone 970-776-4331

DRAFTED BY:	LMO	CHECKED BY:	RKF
DATE DRAFTED:	10/16/18	DATE SURVEYED:	9/26/18
REVISED:		FILE NAME:	18-102