



# Kerr-McGee Oil & Gas Onshore LP

A subsidiary of Anadarko Petroleum Corporation

1099 18<sup>th</sup> Street  
Denver, CO 80202  
720-929-6000

December 18, 2018

Julie Murphy  
Director, Colorado Oil and Gas Conservation Commission  
Department of Natural Resources  
The Chancery Building  
1120 Lincoln Street, Suite 801  
Denver, CO 80203

**Re: 30 Day Certification Letter - 318A.e**

FARLEY 23-1HZ (Doc No. 401807291)

Township 3 North, Range 66 West

Section 23: SWSW

Unit Acreage: 480 Acres

Proposed Spacing Unit:

03N66W SEC 22: SESE;

03N66W SEC 23: SWSW;

03N66W SEC 26: W2W2;

03N66W SEC 27: E2E2;

03N66W SEC 34: NENE;

03N66W SEC 35: NWNW

Weld County, Colorado

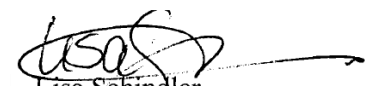
Dear Director Murphy:

Kerr-McGee Oil and Gas Onshore LP ("KMG") hereby certifies that a thirty (30) day notice has been given by certified mail to all mineral owners in the proposed wellbore spacing unit. We have not received any objections to this spacing unit or location. KMG hereby respectfully requests approval of this well.

If you have any questions or issues regarding this permit, please contact me at (720) 929-3091.

Sincerely,

**Kerr-McGee Oil and Gas Onshore LP**

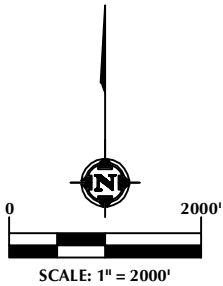
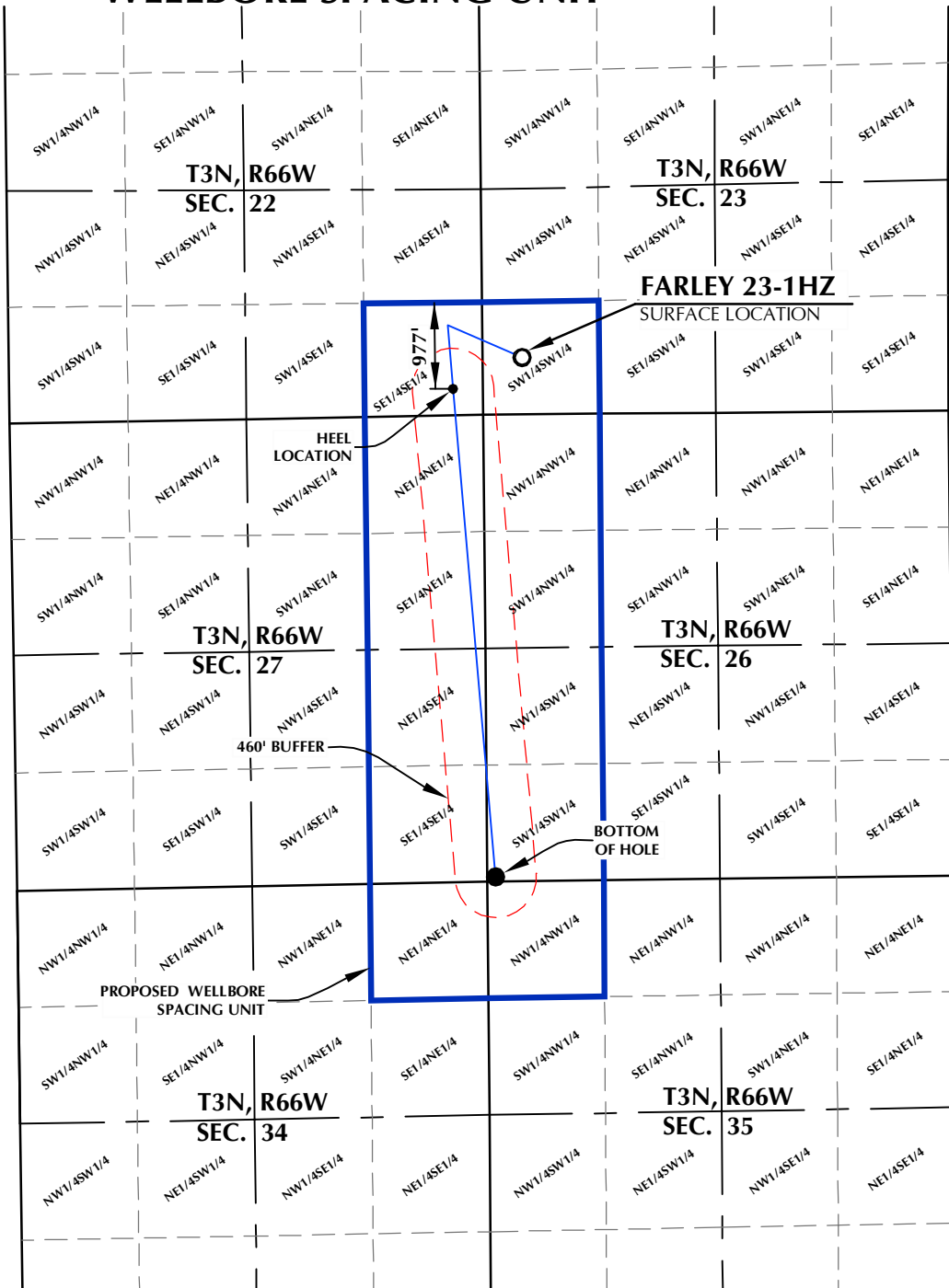
  
Lisa Schindler  
Sr. Regulatory Analyst

Enclosure

DISTANCE FROM COMPLETED  
PORTION OF WELLBORE TO  
NEAREST UNIT BOUNDARY= 977'

# FARLEY 23-1HZ WELLBORE SPACING UNIT

SURFACE LOCATION: NAD 83  
GROUND ELEVATION= 4939.9'  
LATITUDE= 40.205233°  
LONGITUDE= -104.752181°  
LATITUDE= 40°12'18.839"  
LONGITUDE= -104°45'07.853"  
HEEL LOCATION: NAD 83  
LATITUDE= 40.204274°  
LONGITUDE= -104.754997°  
LATITUDE= 40°12'15.387"  
LONGITUDE= -104°45'17.989"  
BOTTOM HOLE LOCATION: NAD 83  
LATITUDE= 40.189094°  
LONGITUDE= -104.753434°  
LATITUDE= 40°11'20.738"  
LONGITUDE= -104°45'12.362"



## NOTES:

1. DRAWING LATITUDE AND LONGITUDE COORDINATES ARE NAD 83 (2011)(EPOCH:2010).
2. ELEVATION BASED ON NAVD88 (GEOID12B).
3. BASIS OF BEARING DERIVED FROM COLORADO COORDINATE SYSTEM OF 1983 NORTH ZONE.
4. ALL MEASURED DISTANCES ARE GRID. COMBINED SCALE FACTOR: .99972399 CALCULATED FROM THE SW. CORNER OF SECTION 23, T3N, R66W.

## WELL PAD - FARLEY 34-23HZ

FARLEY 23-1HZ  
WELLBORE SPACING UNIT  
646' FSL & 448' FWL SWSW (SURFACE)  
LOCATED IN SECTION 23  
300' FSL & 339' FEL SESE (HEEL)  
LOCATED IN SECTION 22  
50' FSL & 93' FWL SWSW (BOTTOM)  
LOCATED IN SECTION 26  
T3N, R66W, 6TH P.M.  
WELD COUNTY, COLORADO

**Kerr-McGee Oil &  
Gas Onshore L.P.**  
1099 18th Street  
Denver, Colorado 80202



## CONSULTING, LLC

SHERIDAN OFFICE  
1095 Saberton Avenue  
Sheridan, Wyoming 82801  
Phone 307-674-0609

LOVELAND OFFICE  
6706 North Franklin Avenue  
Loveland, Colorado 80538  
Phone 970-776-4331

DRAFTED BY:	LMO	CHECKED BY:	RKF
DATE DRAFTED:	10/16/18	DATE SURVEYED:	9/26/18
REVISED:		FILE NAME:	18-102