



410 17th Street, Suite 1400  
Denver, CO 80202  
(720) 440-6100 phone  
(720) 305-0804 fax

[Bonanzacrk.com](http://Bonanzacrk.com)

November 16, 2018

State of Colorado  
Oil and Gas Conservation Commission  
1120 Lincoln Street, Suite 801  
Denver, CO 80203

**RE: Proposed Wellbore Spacing Unit**  
Latham K21-1-12XRLNB  
Niobrara New Drill  
SESE Section 36, Township 5N, Range 63W, 6<sup>th</sup> PM  
Weld County, Colorado

Dear Director Murphy,

Bonanza Creek Energy Operating Company, LLC. ("Bonanza Creek") is planning to drill the above captioned well in accordance with the provisions of Colorado Oil and Gas Conservation Commission (COGCC) Rule 318A.e.

Bonanza Creek's proposed wellbore spacing unit consists of:

Township 5N, Range 63W (Weld County):

Section 36: S2SW

Township 4N, Range 63W (Weld County):

Section 1: W2E2, E2W2

Section 12: W2E2, E2W2

Section 13: NENW

Total acres: 760 ac

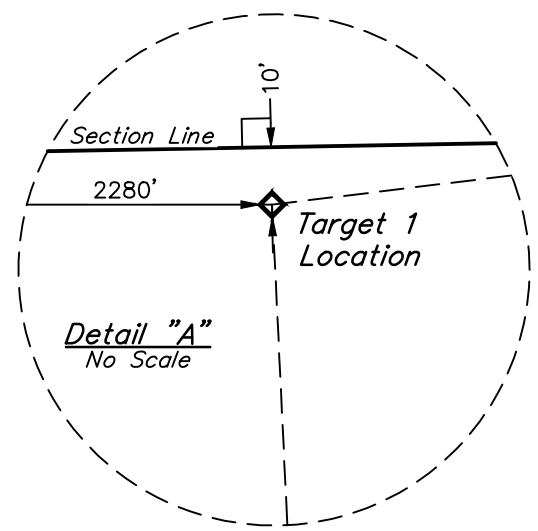
The 30 day notification time period has passed and we have not yet received any objections to such well locations or proposed spacing unit, therefore Bonanza Creek hereby requests the Director to approve the above mentioned well. Bonanza Creek respectfully requests the COGCC review the enclosed map illustrating the proposed wellbore spacing unit.

Regards,  
Bonanza Creek Energy Operating Company, LLC.

Brian Dodek, P.G.  
Manager – Environmental & Regulatory Compliance

L = 90° SYMBOL  
 ● = PROPOSED WELLHEAD.  
 ◆ = TARGET 1 LOCATION.  
 ○ = TARGET BOTTOM HOLE  
 ▲ = SECTION CORNERS  
 LOCATED. (NAD 83)  
 △ = SECTION CORNERS  
 RE-ESTABLISHED.  
 (Not Set on Ground.)  
 (NAD 83)

Figure 1 is an aerial photograph of the study area. It shows a landscape with a river, a road, and some vegetation. A red dot marks the study site (S), and a red rectangle marks the study area (A). A scale bar indicates 1000 feet. A north arrow is also present.



LINE TABLE		
LINE	DIRECTION	LENGTH
L1	S83°02'09"W	2684.42'

# Wellbore Spacing Unit Outline

<b>NAD 83 (SURFACE LOCATION)</b>	<b>NAD 83 (TARGET 1 LOCATION)</b>
LATITUDE = 40°20'59.34" (40.349816°)	LATITUDE = 40°20'56.31" (40.348974°)
LONGITUDE = 104°22'41.68" (104.378245°)	LONGITUDE = 104°23'16.12" (104.387811°)
<b>STATE PLANE NAD 83 (CO. NORTH)</b>	<b>STATE PLANE NAD 83 (CO. NORTH)</b>
N: 1372256.19' E: 3312643.18'	N: 1371915.82' E: 3309981.26'
	<b>NAD 83 (TARGET BOTTOM HOLE)</b>
	LATITUDE = 40°19'14.21" (40.320614°)
	LONGITUDE = 104°23'19.32" (104.388701°)
	<b>STATE PLANE NAD 83 (CO. NORTH)</b>
	N: 1361582.16' E: 3309862.57'

THIS IS TO CERTIFY THAT THE ABOVE AND FOREGOING PARCELS HAVE BEEN  
NOTES OF ACTUAL SURVEYS MADE AND UNDER MY SUPERVISION  
AND THAT THE SAME ARE TRUE AND CORRECT TO THE BEST OF MY  
KNOWLEDGE AND BELIEF:

*[Signature]* 28288-28

REGISTERED LAND SURVEYOR  
REGISTRATION NO. 28285  
STATE OF TEXAS

28288-18

REV: 1 10-18-18 C.IVIE (SURFACE LOCATION MOVE)

**BASIS OF BEARINGS**  
TRANSVERSE MERCATOR PROJECTION WITH  
A CENTRAL MERIDIAN OF W105°00'00".

**BASIS OF ELEVATION**  
OPUS SOLUTION GENERATED NAVD 88

**UELS, LLC**  
Corporate Office \* 85 South 200 East  
Vernal, UT 84078 \* (435) 789-1017



**BONANZA CREEK ENERGY  
OPERATING COMPANY, LLC**

**LATHAM K21-1-12XRLNB**  
**SE 1/4 SE 1/4, SECTION 36, T5N, R63W, 6th P.M.**  
**WELD COUNTY, COLORADO**

<b>SURVEYED BY</b>	RYAN WILLIAMS, D.E.	07-18-18	<b>SCALE</b>
<b>DRAWN BY</b>	C.IVIE	09-27-18	1" = 1000'
<b>WELL LOCATION PLAT</b>			