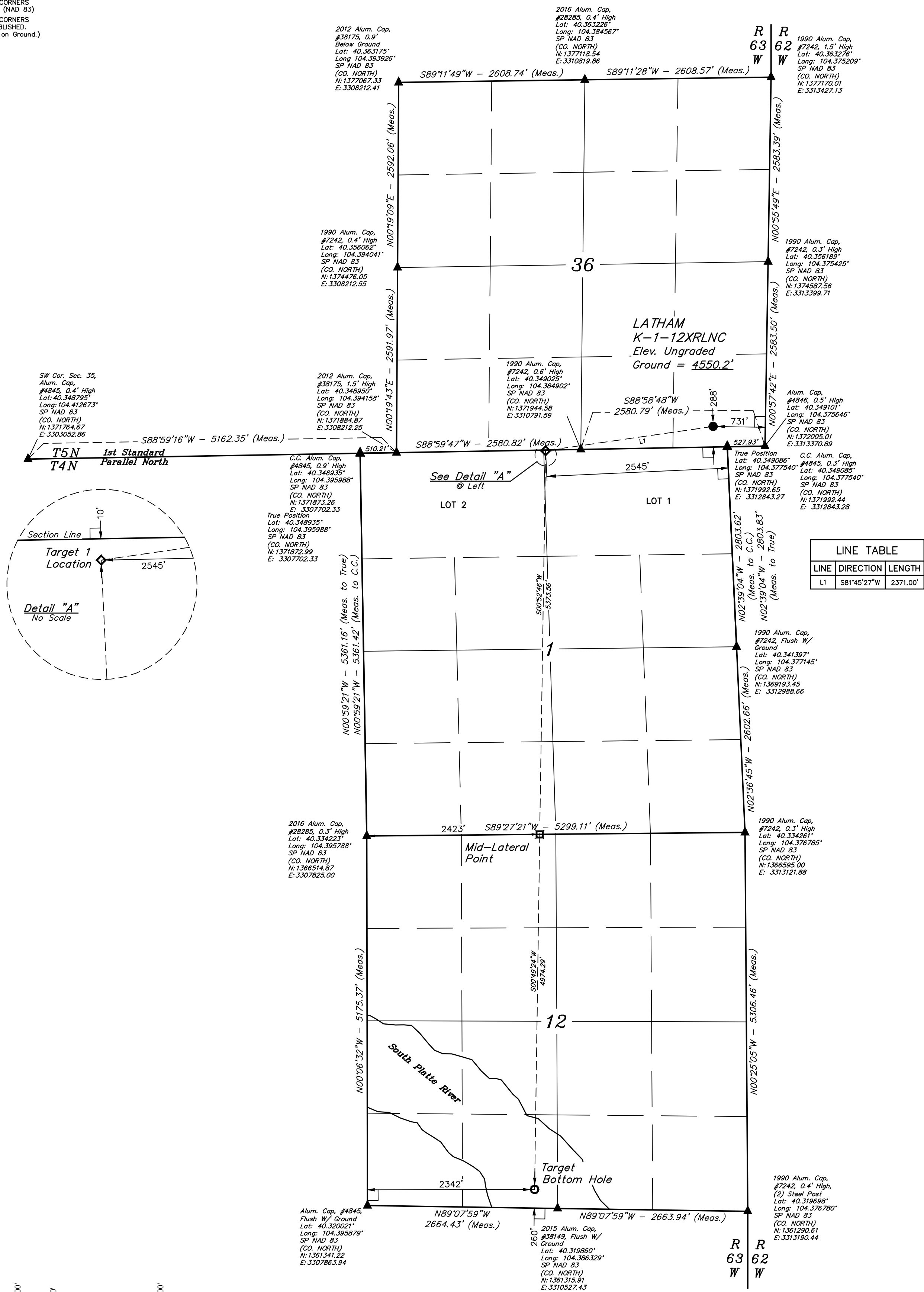


## LEGEND:

- = 90° SYMBOL  
● = PROPOSED WELLHEAD.  
◆ = TARGET 1 LOCATION.  
□ = MID-LATERAL TARGET.  
○ = TARGET BOTTOM HOLE.  
▲ = SECTION CORNERS LOCATED. (NAD 83)  
△ = SECTION CORNERS RE-ESTABLISHED. (Not Set on Ground.) (NAD 83)

T5N, R63W, 6th P.M.



LINE TABLE		
LINE	DIRECTION	LENGTH
L1	S81°45'27"W	2371.00'

PDOP = 1.9



NAD 83 (SURFACE LOCATION)	NAD 83 (TARGET 1 LOCATION)
LATITUDE = 40°20'59.54" (40.349871°)	LATITUDE = 40°20'56.34" (40.348983°)
LONGITUDE = 104°22'41.68" (104.378245°)	LONGITUDE = 104°23'12.01" (104.386670°)
STATE PLANE NAD 83 (CO. NORTH)	STATE PLANE NAD 83 (CO. NORTH)
N: 1372276.18' E: 3312643.07'	N: 1371923.18' E: 3310299.23'
NAD 83 (MID-LATERAL TARGET)	NAD 83 (TARGET BOTTOM HOLE)
LATITUDE = 40°20'03.27" (40.334241°)	LATITUDE = 40°19'14.14" (40.320593°)
LONGITUDE = 104°23'13.56" (104.387099°)	LONGITUDE = 104°23'14.92" (104.387479°)
STATE PLANE NAD 83 (CO. NORTH)	STATE PLANE NAD 83 (CO. NORTH)
N: 1366551.51' E: 3310246.98'	N: 1361578.92' E: 3310203.50'

BASIS OF BEARINGS  
TRANSVERSE MERCATOR PROJECTION WITH  
A CENTRAL MERIDIAN OF W105°00'00".

BASIS OF ELEVATION  
OPUS SOLUTION GENERATED NAVD 88

UELS, LLC

Corporate Office \* 85 South 200 East  
Vernal, UT 84078 \* (435) 789-1017



REV: 1 10-18-18 CIVIE (SURFACE LOCATION MOVE)

BONANZA CREEK ENERGY  
OPERATING COMPANY, LLC

LATHAM K-1-12XRLNC  
SE 1/4 SE 1/4, SECTION 36, T5N, R63W, 6th P.M.  
WELD COUNTY, COLORADO

SURVEYED BY	RYAN WILLIAMS, D.E.	07-18-18	SCALE
DRAWN BY	CIVIE	09-27-18	1" = 1000'

WELL LOCATION PLAT

CERTIFICATE OF REGISTRATION  
THIS IS TO CERTIFY THAT THE ABOVE SURVEY WAS MADE IN ACCORDANCE WITH THE  
NOTES OF ACTUAL SURVEYS MADE BY ME OR UNDER MY SUPERVISION  
AND THAT THE SAME ARE TRUE AND CORRECT TO THE BEST OF MY  
KNOWLEDGE AND BELIEF.

