



410 17th Street, Suite 1400
Denver, CO 80202
(720) 440-6100 phone
(720) 305-0804 fax

BonanzaCrk.com

November 16, 2018

State of Colorado
Oil and Gas Conservation Commission
1120 Lincoln Street, Suite 801
Denver, CO 80203

RE: Proposed Wellbore Spacing Unit
Latham K31-1-12XRLNB
Niobrara New Drill
SESE Section 36, Township 5N, Range 63W, 6th PM
Weld County, Colorado

Dear Director Murphy,

Bonanza Creek Energy Operating Company, LLC. ("Bonanza Creek") is planning to drill the above captioned well in accordance with the provisions of Colorado Oil and Gas Conservation Commission (COGCC) Rule 318A.e.

Bonanza Creek's proposed wellbore spacing unit consists of:

Township 5N, Range 63W (Weld County):
Section 36: SWSE, SESW
Township 4N, Range 63W (Weld County):
Section 1: W2E2, E2W2
Section 12: W2E2, E2W2
Section 13: NWNE, NENW

Total acres: 800 ac

The 30 day notification time period has passed and we have not yet received any objections to such well locations or proposed spacing unit, therefore Bonanza Creek hereby requests the Director to approve the above mentioned well. Bonanza Creek respectfully requests the COGCC review the enclosed map illustrating the proposed wellbore spacing unit.

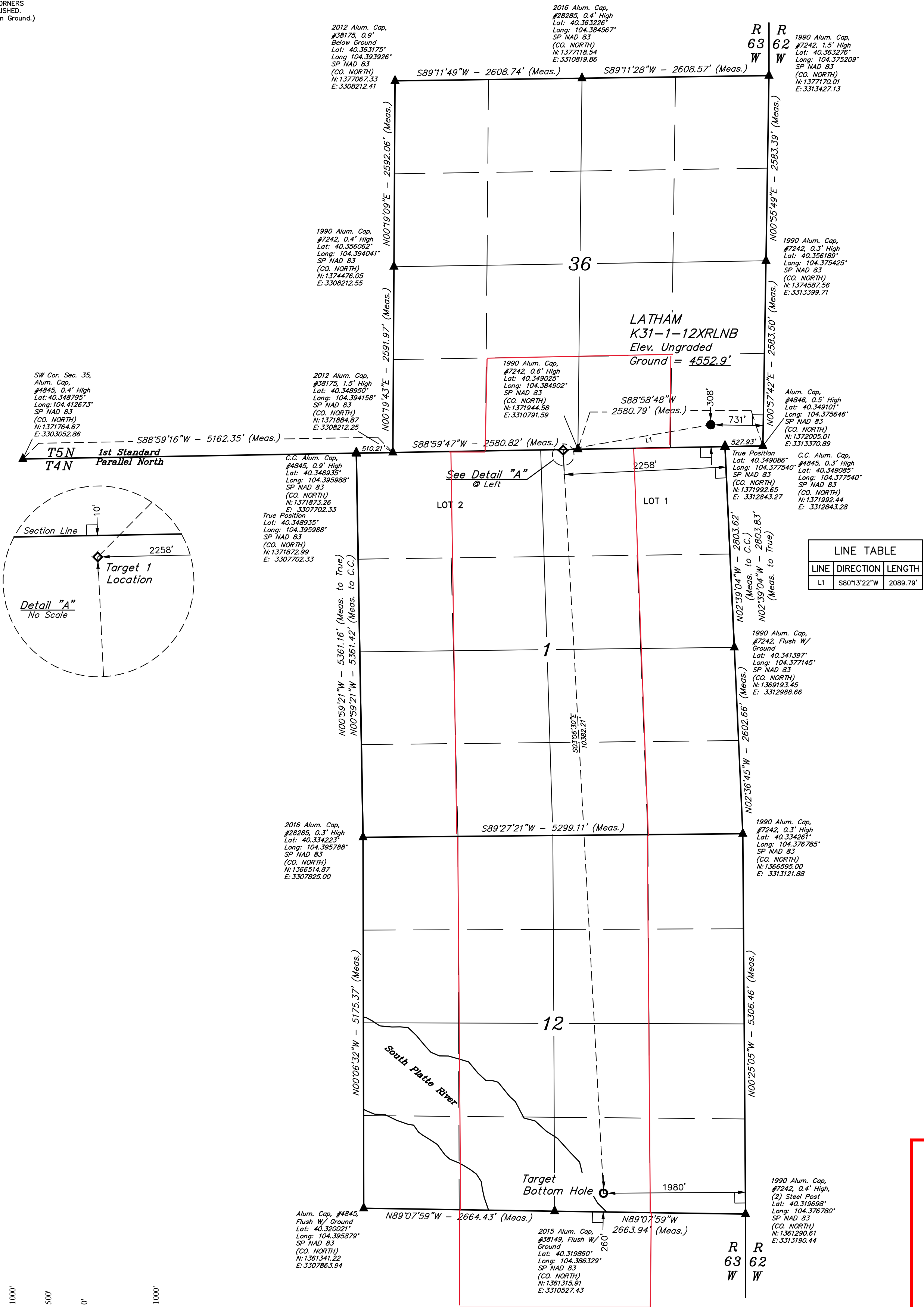
Regards,
Bonanza Creek Energy Operating Company, LLC.

Brian Dodek, P.G.
Manager – Environmental & Regulatory Compliance

LEGEND:

- 90° SYMBOL
- PROPOSED WELLHEAD.
- TARGET 1 LOCATION.
- TARGET BOTTOM HOLE.
- SECTION CORNERS LOCATED. (NAD 83)
- SECTION CORNERS RE-ESTABLISHED. (Not Set on Ground.) (NAD 83)

T5N, R63W, 6th P.M.



Wellbore
Spacing
Unit Outline

PDOP = 1.9	
NAD 83 (SURFACE LOCATION)	NAD 83 (TARGET 1 LOCATION)
LATITUDE = 40°20'59.73" (40.349926°)	LATITUDE = 40°20'56.37" (40.348992°)
LONGITUDE = 104°22'41.68" (104.378244°)	LONGITUDE = 104°23'08.30" (104.385640°)
STATE PLANE NAD 83 (CO. NORTH)	STATE PLANE NAD 83 (CO. NORTH)
N: 1372296.17' E: 3312642.96'	N: 1371929.82' E: 3310586.18'
	NAD 83 (TARGET BOTTOM HOLE)
	LATITUDE = 40°19'13.92" (40.320532°)
	LONGITUDE = 104°23'01.97" (104.383880°)
	STATE PLANE NAD 83 (CO. NORTH)
	N: 1361569.39' E: 3311207.28'

CERTIFICATE OF RECORDING

THIS IS TO CERTIFY THAT THE ABOVE DESCRIBED SURVEY WAS MADE IN ACCORDANCE WITH THE RULES AND REGULATIONS OF THE BOARD OF LAND SURVEYORS, STATE OF COLORADO, AND THAT THE SAME ARE TRUE AND CORRECT TO THE BEST OF MY KNOWLEDGE AND BELIEF.

RECORDED LAND SURVEYOR
REGISTRATION NO. 28285
STATE OF COLORADO

2018