



410 17th Street, Suite 1400
Denver, CO 80202
(720) 440-6100 phone
(720) 305-0804 fax

Bonanzacrk.com

November 16, 2018

State of Colorado
Oil and Gas Conservation Commission
1120 Lincoln Street, Suite 801
Denver, CO 80203

RE: Proposed Wellbore Spacing Unit
Latham P-1-12XRLNC
Niobrara New Drill
SESE Section 36, Township 5N, Range 63W, 6th PM
Weld County, Colorado

Dear Director Murphy,

Bonanza Creek Energy Operating Company, LLC. ("Bonanza Creek") is planning to drill the above captioned well in accordance with the provisions of Colorado Oil and Gas Conservation Commission (COGCC) Rule 318A.e.

Bonanza Creek's proposed wellbore spacing unit consists of:

Township 5N, Range 63W (Weld County):
Section 36: SWSE
Township 4N, Range 63W (Weld County):
Section: E2
Section 12: E2
Section 13: N2NE

Total acres: 760ac

The 30 day notification time period has passed and we have not yet received any objections to such well locations or proposed spacing unit, therefore Bonanza Creek hereby requests the Director to approve the above mentioned well. Bonanza Creek respectfully requests the COGCC review the enclosed map illustrating the proposed wellbore spacing unit.

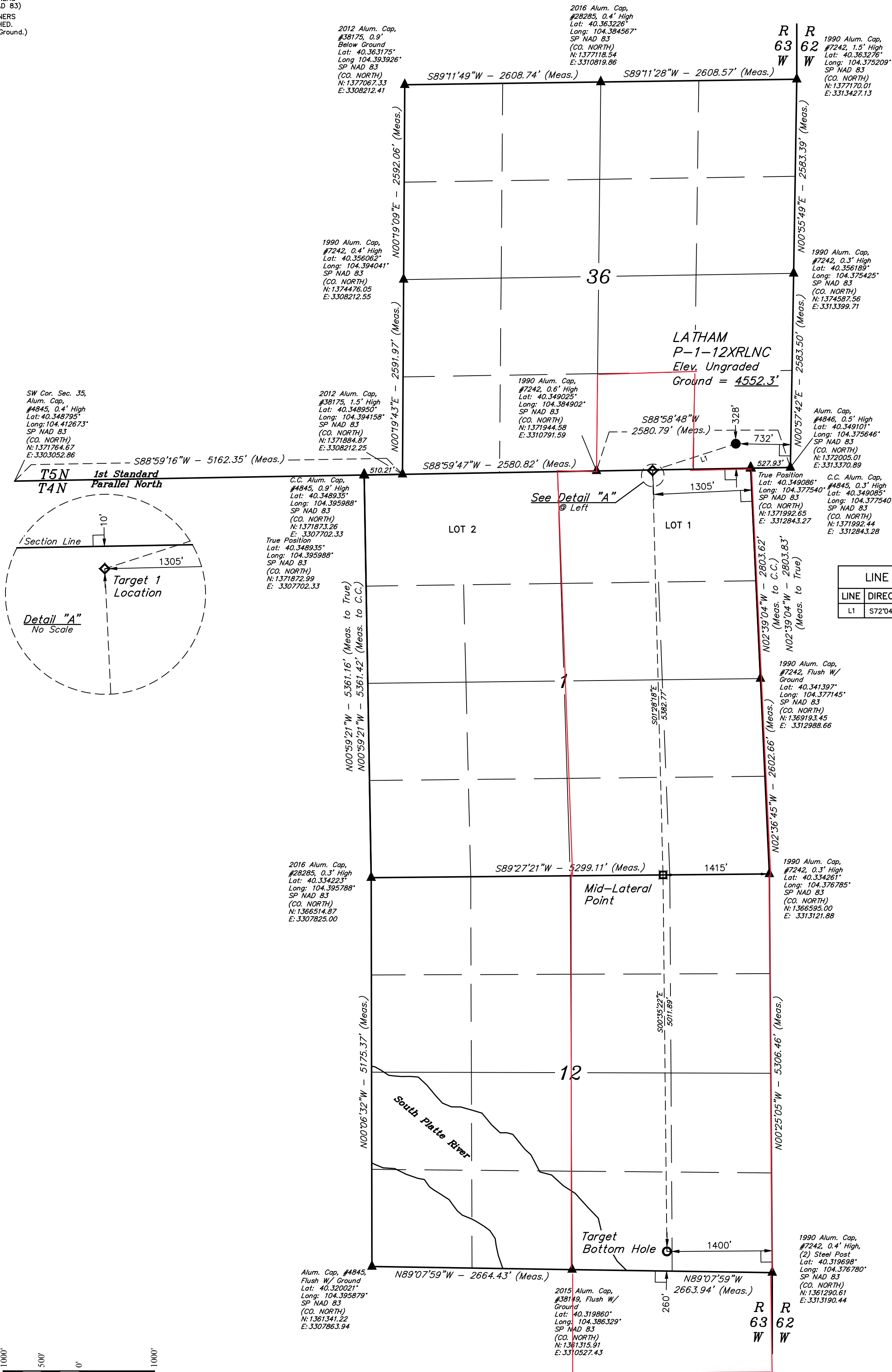
Regards,
Bonanza Creek Energy Operating Company, LLC.

Brian Dodek, P.G.
Manager – Environmental & Regulatory Compliance

LEGEND:

- 90° SYMBOL
- PROPOSED WELLHEAD.
- TARGET 1 LOCATION.
- MID-LATERAL TARGET.
- TARGET BOTTOM HOLE.
- SECTION CORNERS LOCATED. (NAD 83)
- SECTION CORNERS RE-ESTABLISHED. (Not Set on Ground.) (NAD 83)

T5N, R63W, 6th P.M.



LINE TABLE		
LINE	DIRECTION	LENGTH
L1	S72°04'05"W	1162.67'

Wellbore
Spacing
Unit Outline



NAD 83 (SURFACE LOCATION)	NAD 83 (TARGET 1 LOCATION)
LATITUDE = 40°20'59.93" (40.349981°)	LATITUDE = 40°20'56.47" (40.349020°)
LONGITUDE = 104°22'41.68" (104.378244°)	LONGITUDE = 104°22'55.99" (104.382221°)
STATE PLANE NAD 83 (CO. NORTH)	STATE PLANE NAD 83 (CO. NORTH)
N: 1372316.17' E: 3312642.85'	N: 1371952.09' E: 3311539.02'
NAD 83 (MID-LATERAL TARGET)	NAD 83 (TARGET BOTTOM HOLE)
LATITUDE = 40°20'03.30" (40.334251°)	LATITUDE = 40°19'13.79" (40.320497°)
LONGITUDE = 104°22'54.69" (104.381859°)	LONGITUDE = 104°22'54.48" (104.381800°)
STATE PLANE NAD 83 (CO. NORTH)	STATE PLANE NAD 83 (CO. NORTH)
N: 1366573.60' E: 3311707.48'	N: 1361563.88' E: 3311787.22'

BASIS OF BEARINGS
TRANSVERSE MERCATOR PROJECTION WITH
A CENTRAL MERIDIAN OF W105°00'00".

BASIS OF ELEVATION
OPUS SOLUTION GENERATED NAVD 88

UELS, LLC
Corporate Office * 85 South 200 East
Vernal, UT 84078 * (435) 789-1017



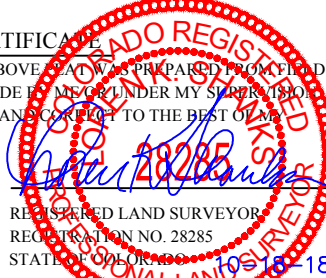
BONANZA CREEK ENERGY
OPERATING COMPANY, LLC

LATHAM P-1-12XRLNC
SE 1/4 SE 1/4, SECTION 36, T5N, R63W, 6th P.M.
WELD COUNTY, COLORADO

SURVEYED BY	RYAN WILLIAMS, D.E.	07-18-18	SCALE
DRAWN BY	CIVIL	09-27-18	1" = 1000'

WELL LOCATION PLAT

CERTIFICATE OF RECORD
THIS IS TO CERTIFY THAT THE ABOVE SURVEY WAS CONDUCTED IN ACCORDANCE WITH THE RULES AND REGULATIONS OF THE BOARD OF LAND SURVEYORS OF THE STATE OF COLORADO, AND THAT THE SAME ARE TRUE AND CORRECT TO THE BEST OF MY KNOWLEDGE AND BELIEF.



REV: 1 10-18-18 CIVIL (SURFACE LOCATION MOVE)