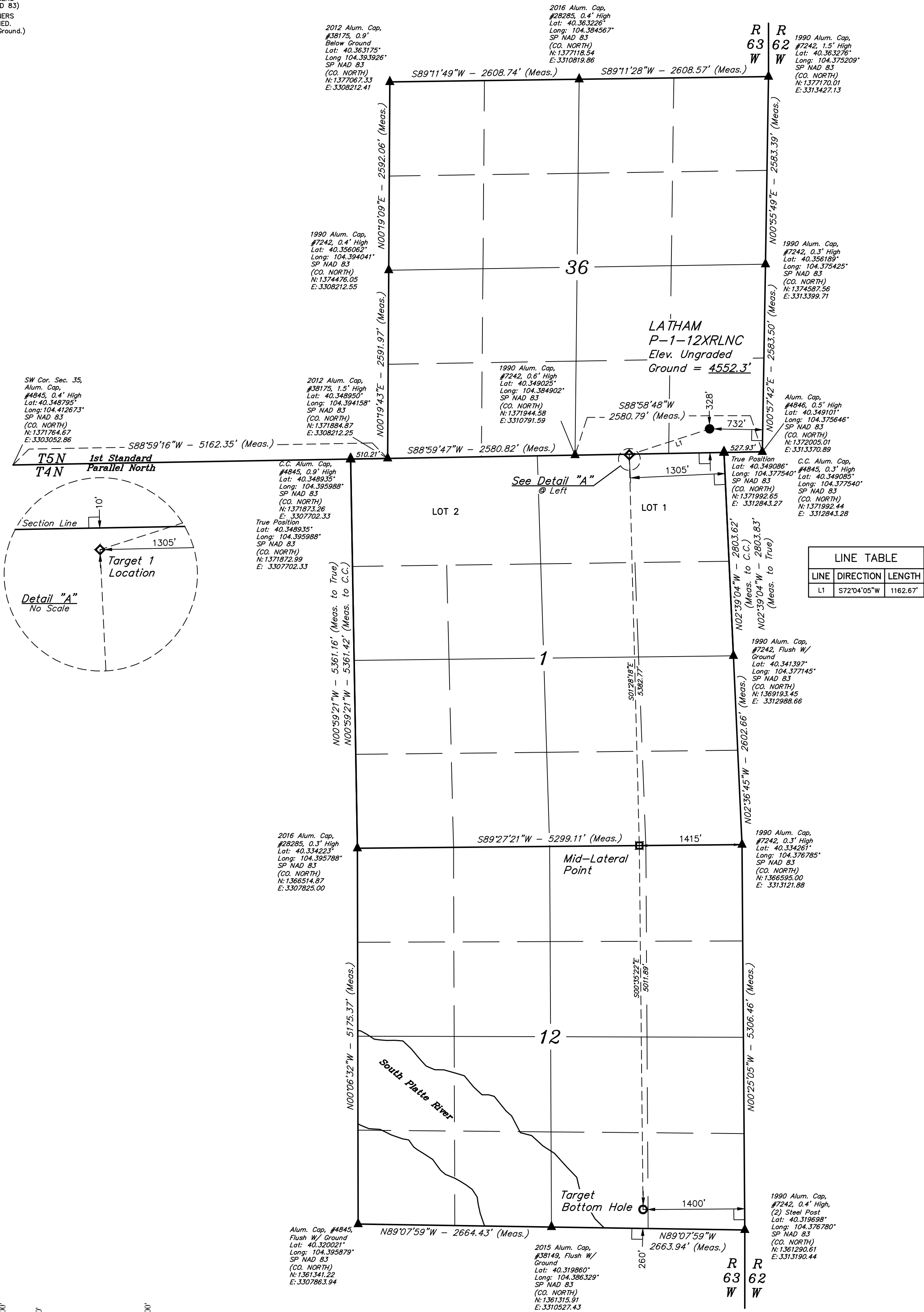


LEGEND:

- = 90° SYMBOL
● = PROPOSED WELLHEAD.
◆ = TARGET 1 LOCATION.
□ = MID-LATERAL TARGET.
○ = TARGET BOTTOM HOLE.
▲ = SECTION CORNERS LOCATED. (NAD 83)
△ = SECTION CORNERS RE-ESTABLISHED. (Not Set on Ground.) (NAD 83)

T5N, R63W, 6th P.M.



NAD 83 (SURFACE LOCATION)	NAD 83 (TARGET 1 LOCATION)
LATITUDE = 40°20'59.93" (40.349981°)	LATITUDE = 40°20'56.47" (40.349020°)
LONGITUDE = 104°22'41.68" (104.378244°)	LONGITUDE = 104°22'55.99" (104.382221°)
STATE PLANE NAD 83 (CO. NORTH)	STATE PLANE NAD 83 (CO. NORTH)
N: 1372316.17' E: 3312642.85'	N: 1371952.09' E: 3311539.02'
NAD 83 (MID-LATERAL TARGET)	NAD 83 (TARGET BOTTOM HOLE)
LATITUDE = 40°20'03.30" (40.334251°)	LATITUDE = 40°19'13.79" (40.320497°)
LONGITUDE = 104°22'54.69" (104.381859°)	LONGITUDE = 104°22'54.48" (104.381800°)
STATE PLANE NAD 83 (CO. NORTH)	STATE PLANE NAD 83 (CO. NORTH)
N: 1366573.60' E: 3311707.48'	N: 1361563.88' E: 3311787.22'

CERTIFICATE OF SURVEY

THIS IS TO CERTIFY THAT THE ABOVE SURVEY WAS CONDUCTED IN ACCORDANCE WITH THE RULES AND REGULATIONS OF THE BOARD OF LAND SURVEYORS OF THE STATE OF COLORADO, AND THAT THE SAME ARE TRUE AND CORRECT TO THE BEST OF MY KNOWLEDGE AND BELIEF.

REGISTERED LAND SURVEYOR
RECEIVED SURVEY NO. 28285
STATE OF COLORADO
JAN 18 2018

REV: 1 10-18-18 CIVIE (SURFACE LOCATION MOVE)

BONANZA CREEK ENERGY
OPERATING COMPANY, LLC

LATHAM P-1-12XRLNC
SE 1/4 SE 1/4, SECTION 36, T5N, R63W, 6th P.M.
WELD COUNTY, COLORADO

SURVEYED BY	RYAN WILLIAMS, D.E.	07-18-18	SCALE
DRAWN BY	CIVIE	09-27-18	1" = 1000'

WELL LOCATION PLAT



UELS, LLC
Corporate Office * 85 South 200 East
Vernal, UT 84078 * (435) 789-1017

