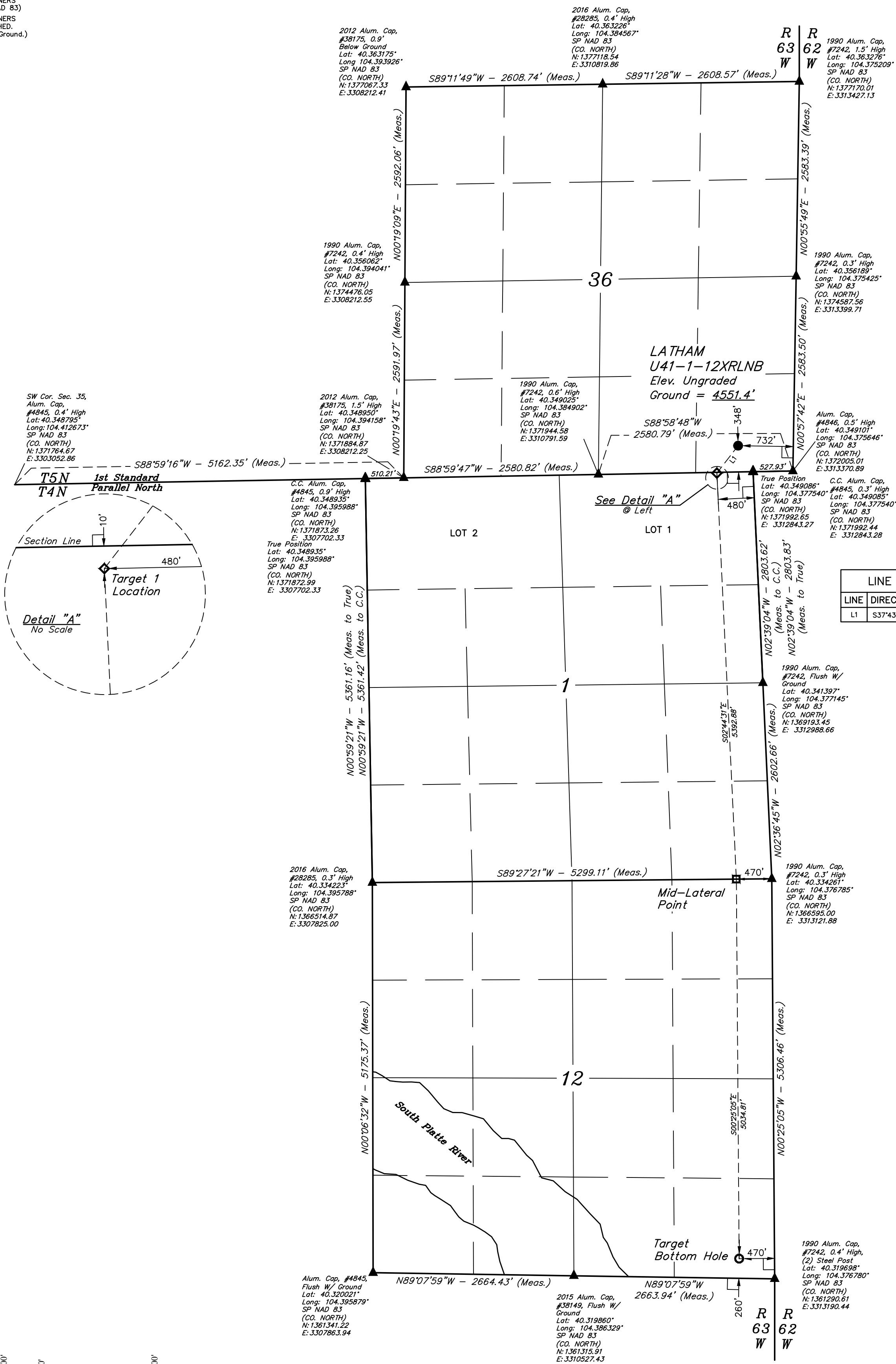


LEGEND:

- = 90° SYMBOL
● = PROPOSED WELLHEAD.
◆ = TARGET 1 LOCATION.
□ = MID-LATERAL TARGET.
○ = TARGET BOTTOM HOLE.
▲ = SECTION CORNERS LOCATED. (NAD 83)
△ = SECTION CORNERS RE-ESTABLISHED. (Not Set on Ground.) (NAD 83)

T5N, R63W, 6th P.M.



LINE TABLE		
LINE	DIRECTION	LENGTH
L1	S37°43'17"W	459.27'

PDOP = 1.9



NAD 83 (SURFACE LOCATION)	NAD 83 (TARGET 1 LOCATION)
LATITUDE = 40°21'00.13\"/>	LATITUDE = 40°20'56.56\"/>
LONGITUDE = 104°22'41.68\"/>	LONGITUDE = 104°22'45.34\"/>
STATE PLANE NAD 83 (CO. NORTH)	STATE PLANE NAD 83 (CO. NORTH)
N: 1372336.16' E: 3312642.73'	N: 1371971.42' E: 3312363.88'
NAD 83 (MID-LATERAL TARGET)	NAD 83 (TARGET BOTTOM HOLE)
LATITUDE = 40°20'03.33\"/>	LATITUDE = 40°19'13.59\"/>
LONGITUDE = 104°22'42.49\"/>	LONGITUDE = 104°22'42.48\"/>
STATE PLANE NAD 83 (CO. NORTH)	STATE PLANE NAD 83 (CO. NORTH)
N: 1366587.89' E: 3312652.08'	N: 1361555.04' E: 3312717.13'

CERTIFICATE OF REGISTRATION
THIS IS TO CERTIFY THAT THE ABOVE NAMED SURVEYOR HAS BEEN REGISTERED UNDER MY SUPERVISION AND THAT THE SAME ARE TRUE AND CORRECT TO THE BEST OF MY KNOWLEDGE AND BELIEF.

REGISTERED LAND SURVEYOR
REGISTRATION NO. 28285
STATE OF COLORADO
JANUARY 1, 2018 - JANUARY 1, 2019

REV: 1 10-18-18 CIVIE (SURFACE LOCATION MOVE)

BONANZA CREEK ENERGY
OPERATING COMPANY, LLC

LATHAM U41-1-12XRLNB
SE 1/4 SE 1/4, SECTION 36, T5N, R63W, 6th P.M.
WELD COUNTY, COLORADO

SURVEYED BY	RYAN WILLIAMS, D.E.	07-18-18	SCALE
DRAWN BY	CIVIE	09-27-18	1" = 1000'

WELL LOCATION PLAT

BASIS OF BEARINGS
TRANSVERSE MERCATOR PROJECTION WITH
A CENTRAL MERIDIAN OF W105°00'00\"/>

BASIS OF ELEVATION
OPUS SOLUTION GENERATED NAVD 88

UELS, LLC
Corporate Office * 85 South 200 East
Vernal, UT 84078 * (435) 789-1017

