



---

December 19, 2018

Ms. Julie Murphy, Director  
Colorado Oil & Gas Conservation Commission  
1120 Lincoln Street, Ste. 801  
Denver, Colorado 80203

RE: Rule 318.A.e.  
**Interchange B S22-30-20N**

Surface Location: NESW, Section 10, Township 1 South, Range 68 West, Broomfield County, CO

Dear Ms. Murphy

Extraction Oil and Gas is planning to drill the captioned horizontal wells in accordance with the provision of COGCC Rule 318A.e.

The proposed wellbore spacing unit consists of:

Section 2: SWSW  
Section 3: SESE  
Section 10: E2E2  
Section 11: W2W2  
Section 14: W2W2  
Section 15: E2E2  
Section 22: E2E2  
Section 23: W2W2

The spacing unit is a 1040-acre wellbore spacing unit for the Niobrara formation.

Extraction Oil and Gas hereby certifies to the Director that all Owners within the proposed spacing unit above were notified and 30 days have passed without objection.

If you have any questions or issues regarding this permit, please contact Jason Rayburn at (720) 974-7798.

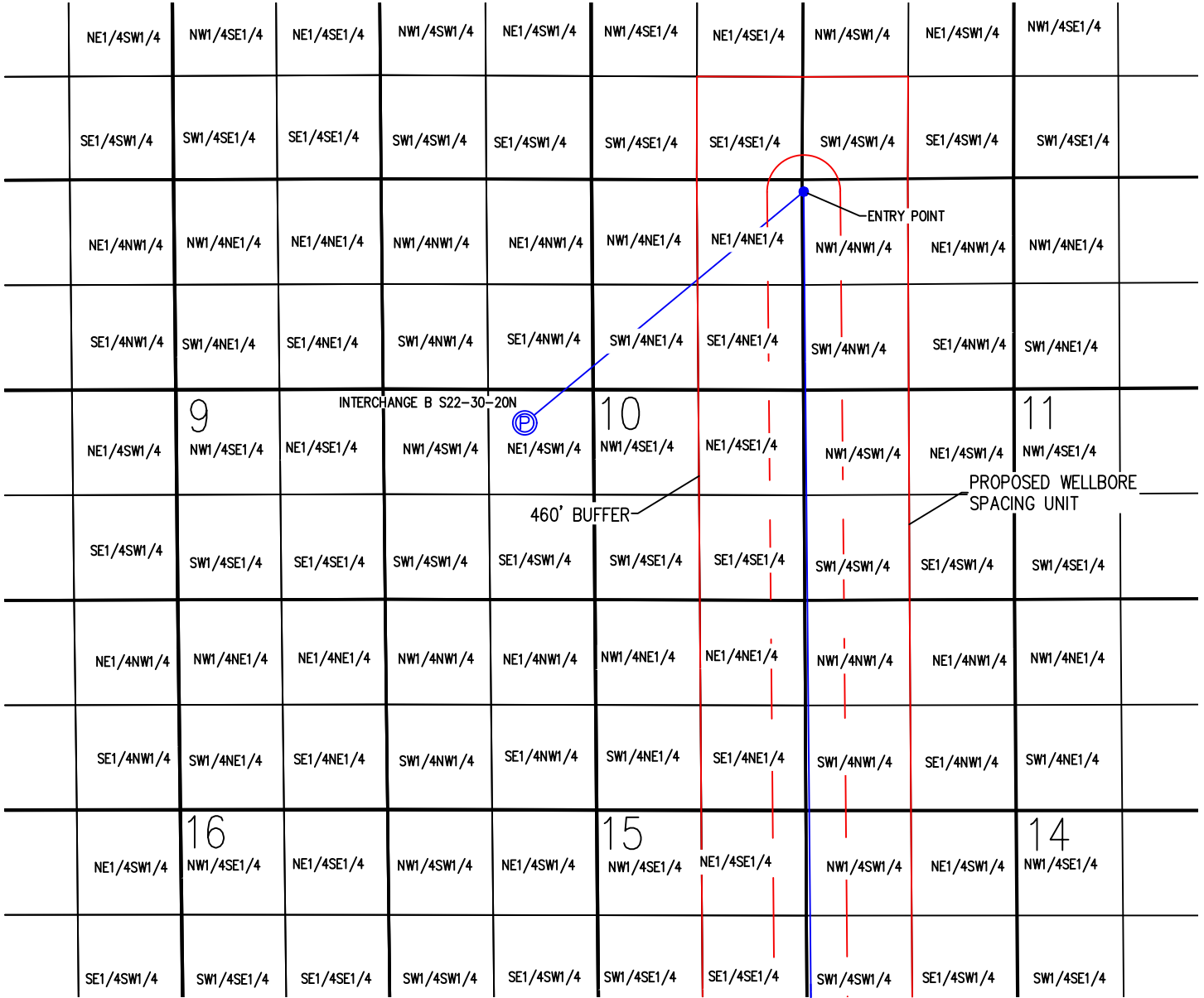
Sincerely,



Extraction Oil & Gas, Inc.

# WELL BORE SPACING UNIT INTERCHANGE B S22-30-20N

NE1/4 SW1/4 SEC. 10, T1S, R 68 W, 6TH P.M.



0 2000'  
Scale 1" = 2000' ft

WELL BORE  
CONTINUES ON TO  
SHEET 2

INTERCHANGE B S22-30-20N

SURFACE LOCATION  
LATITUDE = 39.978220°  
LONGITUDE = -104.990845°

ENTRY POINT LOCATION  
LATITUDE = 39.986146°  
LONGITUDE = -104.978275°

BOTTOM HOLE LOCATION  
LATITUDE = 39.944291°  
LONGITUDE = -104.978108°

## NOTES:

- 1) THIS SKETCH DOES NOT REPRESENT A BOUNDARY SURVEY.
- 2) THE DATUM FOR THE LATITUDES AND LONGITUDES ON THIS SKETCH IS NAD83.

## LEGEND

- ⊙ - PROPOSED WELL HEAD
- ⊙ - PROPOSED BOTTOM HOLE
- - CALCULATED DIMENSION



DRAWN BY RPM	CHECKED BY AAD
INITIAL SUBMITTAL 2/9/2018	REVISED N/A
DRAWING SIZE 8.5" X 11"	JOB NO. EXT01588W10-03
SHEET 1	OF 2



# WELL BORE SPACING UNIT INTERCHANGE B S22-30-20N

NE1/4 SW1/4 SEC. 10, T1N, R 68 W, 6TH P.M.

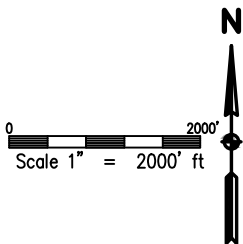
WELL BORE  
CONTINUES ON TO  
SHEET 2

SE1/4SW1/4	SW1/4SE1/4	SE1/4SE1/4	SW1/4SW1/4	SE1/4SW1/4	SW1/4SE1/4	SE1/4SE1/4	SW1/4SW1/4	SE1/4SW1/4	SW1/4SE1/4	
NE1/4NW1/4	NW1/4NE1/4	NE1/4NE1/4	NW1/4NW1/4	NE1/4NW1/4	NW1/4NE1/4	NE1/4NE1/4	NW1/4NW1/4	NE1/4NW1/4	NW1/4NE1/4	
SE1/4NW1/4	SW1/4NE1/4	SE1/4NE1/4	SW1/4NW1/4	SE1/4NW1/4	SW1/4NE1/4	SE1/4NE1/4	SW1/4NW1/4	SE1/4NW1/4	SW1/4NE1/4	
NE1/4SW1/4	21 NW1/4SE1/4	NE1/4SE1/4	NW1/4SW1/4	NE1/4SW1/4	22 NW1/4SE1/4	NE1/4SE1/4	NW1/4SW1/4	NE1/4SW1/4	23 NW1/4SE1/4	
SE1/4SW1/4	SW1/4SE1/4	SE1/4SE1/4	SW1/4SW1/4	SE1/4SW1/4	SW1/4SE1/4	SE1/4SE1/4	SW1/4SW1/4	SE1/4SW1/4	SW1/4SE1/4	
NE1/4NW1/4	NW1/4NE1/4	NE1/4NE1/4	NW1/4NW1/4	NE1/4NW1/4	NW1/4NE1/4	NE1/4NE1/4	NW1/4NW1/4	NE1/4NW1/4	NW1/4NE1/4	
SE1/4NW1/4	SW1/4NE1/4	SE1/4NE1/4	SW1/4NW1/4	SE1/4NW1/4	SW1/4NE1/4	SE1/4NE1/4	SW1/4NW1/4	SE1/4NW1/4	SW1/4NE1/4	
NE1/4SW1/4	28 NW1/4SE1/4	NE1/4SE1/4	NW1/4SW1/4	NE1/4SW1/4	27 NW1/4SE1/4	NE1/4SE1/4	NW1/4SW1/4	NE1/4SW1/4	26 NW1/4SE1/4	
SE1/4SW1/4	SW1/4SE1/4	SE1/4SE1/4	SW1/4SW1/4	SE1/4SW1/4	SW1/4SE1/4	SE1/4SE1/4	SW1/4SW1/4	SE1/4SW1/4	SW1/4SE1/4	

460' BUFFER

PROPOSED WELLBORE  
SPACING UNIT

BOTTOM HOLE  
INTERCHANGE B S22-30-20N



INTERCHANGE B S22-30-20N

SURFACE LOCATION

LATITUDE = 39.978220°

LONGITUDE = -104.990845°

ENTRY POINT LOCATION

LATITUDE = 39.986146°

LONGITUDE = -104.978275°

BOTTOM HOLE LOCATION

LATITUDE = 39.944291°

LONGITUDE = -104.978108°

NOTES:

- 1) THIS SKETCH DOES NOT REPRESENT A BOUNDARY SURVEY.
- 2) THE DATUM FOR THE LATITUDES AND LONGITUDES ON THIS SKETCH IS NAD83.

**LEGEND**

- ⊙ - PROPOSED WELL HEAD
- ⊙ - PROPOSED BOTTOM HOLE
- - CALCULATED DIMENSION



DRAWN BY RPM	CHECKED BY AAD
INITIAL SUBMITTAL 2/9/2018	
REVISED N/A	
DRAWING SIZE 8.5" X 11"	
JOB NO. EXT0158BW10-03	
SHEET 2 of 2	

**BASELINE**  
Engineering - Planning - Surveying

4007 S. LINCOLN AVENUE, SUITE 405 - LOVELAND, COLORADO 80537  
P: 970.353.7800 - F: 970.353.7801 - www.baselinecorp.com