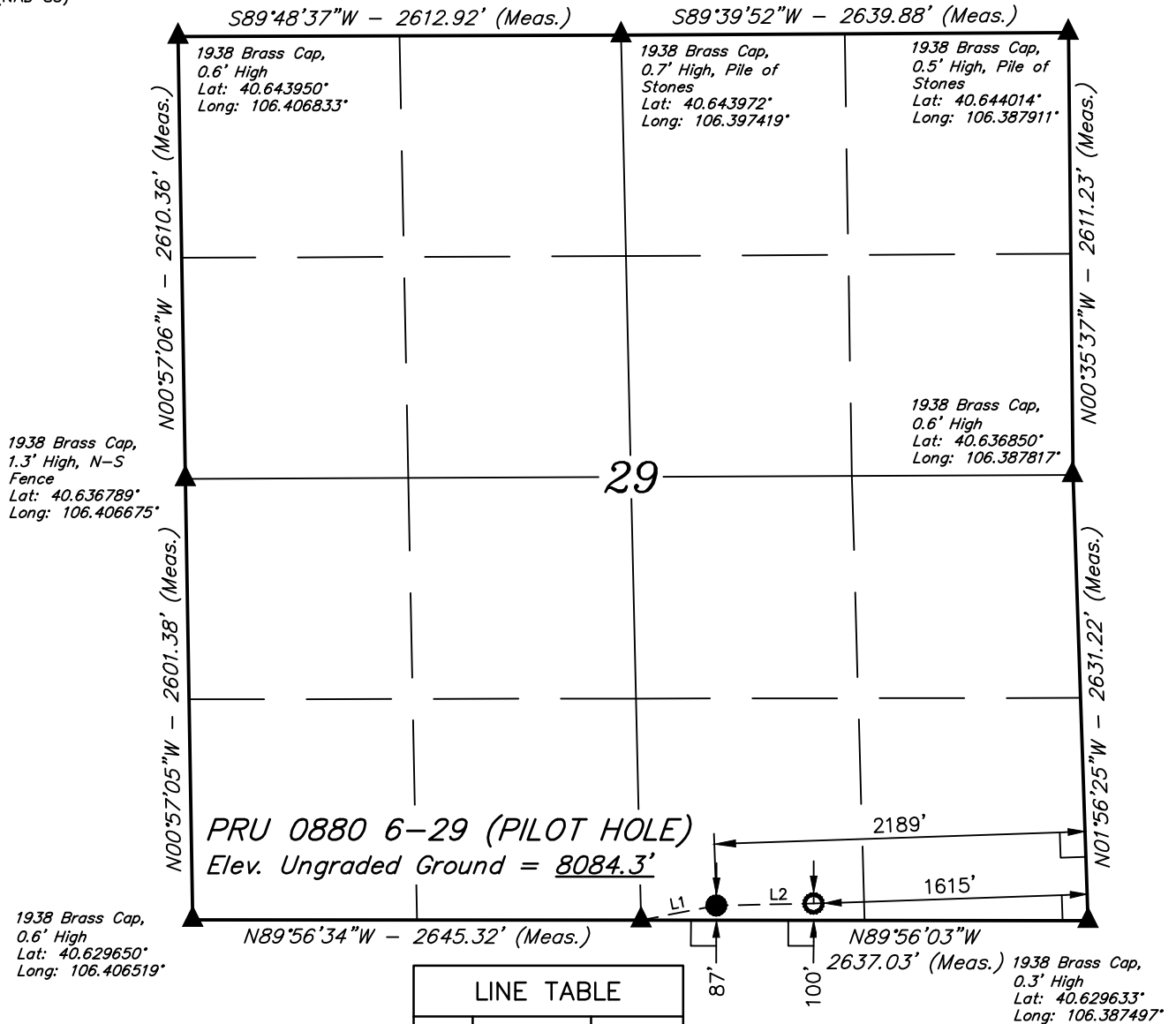


# LEGEND:

- = 90° SYMBOL
- = PROPOSED WELLHEAD.
- = TARGET BOTTOM HOLE.
- = SECTION CORNERS LOCATED. (NAD 83)

## T8N, R80W, 6th P.M.



### LINE TABLE

LINE	DIRECTION	LENGTH
L1	N78°55'55"E	452.57'
L2	N88°48'23"E	573.62'

PDOP = 1.5



NAD 83 (SURFACE LOCATION)	NAD 83 (TARGET BOTTOM HOLE)
LATITUDE = 40°37'47.58" (40.629882)	LATITUDE = 40°37'47.69" (40.629915)
LONGITUDE = 106°23'43.42" (106.395394)	LONGITUDE = 106°23'35.98" (106.393329)
NAD 27 (SURFACE LOCATION)	NAD 27 (TARGET BOTTOM HOLE)
LATITUDE = 40°37'47.65" (40.629904)	LATITUDE = 40°37'47.77" (40.629937)
LONGITUDE = 106°23'41.31" (106.394808)	LONGITUDE = 106°23'33.87" (106.392743)
STATE PLANE NAD 83 (CO. NORTH)	STATE PLANE NAD 83 (CO. NORTH)
N: 1473562.81 E: 2751473.40	N: 1473568.92 E: 2752046.75
STATE PLANE NAD 27 (CO. NORTH)	STATE PLANE NAD 27 (CO. NORTH)
N: 473560.78 E: 1751629.48	N: 473566.90 E: 1752202.83

THIS IS TO CERTIFY THAT THE ABOVE PLAT WAS PREPARED FROM FIELD NOTES OF ACTUAL SURVEYS MADE BY ME OR UNDER MY SUPERVISION AND THAT THE SAME ARE TRUE AND CORRECT TO THE BEST OF MY KNOWLEDGE AND BELIEF.

### CERTIFICATE

REGISTERED LAND SURVEYOR  
REGISTRATION NO. 28285  
STATE OF COLORADO

### BASIS OF BEARINGS

BASIS OF BEARINGS IS A G.P.S. OBSERVATION

### BASIS OF ELEVATION

SPOT ELEVATION AT THE SOUTHEAST CORNER OF SECTION 29, T7N, R80W, 6th P.M., TAKEN FROM THE COALMONT QUADRANGLE, COLORADO, JACKSON COUNTY, 7.5 MINUTE QUAD (TOPOGRAPHIC MAP) PUBLISHED BY THE UNITED STATES DEPARTMENT OF THE INTERIOR, GEOLOGICAL SURVEY. SAID ELEVATION IS MARKED AS BEING 8156 FEET.

UELS, LLC

Corporate Office \* 85 South 200 East  
Vernal, UT 84078 \* (435) 789-1017



## SandRidge Exploration & Production, LLC

**PRU 0880 6-29 (PILOT HOLE)**  
**SW 1/4 SE 1/4, SECTION 29, T8N, R80W, 6th P.M.**  
**JACKSON COUNTY, COLORADO**

SURVEYED BY	JARED CHRISTOPHER, G.W.	04-10-17	SCALE
DRAWN BY	M.D.	07-02-18	1" = 1000'

### WELL LOCATION PLAT