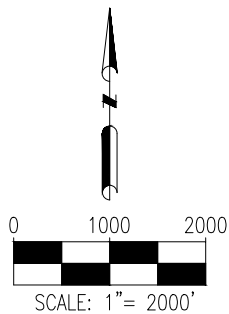
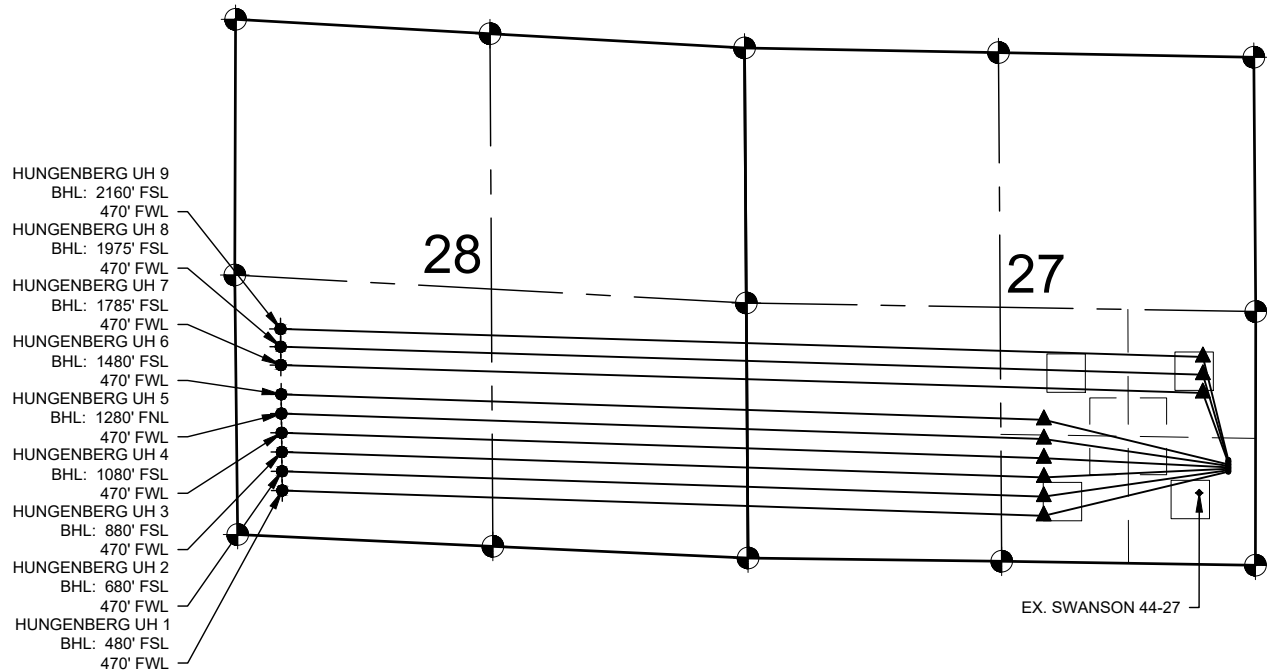


# HUNGENBERG PAD MULTI-WELL PLAN



## LEGEND

- = EXISTING MONUMENT
- = CALCULATED POSITION
- = PROPOSED WELL
- ◆ = EXISTING WELL
- ▲ = BOTTOM HOLE
- ▲ = LANDING POINT
- BHL = BOTTOM HOLE LOCATION

## NOTES:

- THIS FIELD SURVEY CONFORMS TO THE MINIMUM STANDARDS SET BY THE C.O.G.C.C., RULE NO. 215
- ALL DISTANCES AND BEARINGS SHOWN HEREON ARE GROUND VALUES AS GPS MEASURED IN THE FIELD, WITH TIES TO WELLS MEASURED PERPENDICULAR TO SECTION LINES. THIS LOW DISTORTION PROJECTION (LDP) IS BASED ON THE NORTH AMERICAN DATUM OF 1983, U.S. SURVEY FOOT WITH A LATITUDE ORIGIN OF 40.478994°N, A CENTRAL MERIDIAN LONGITUDE OF 104.659055°W, AND A SCALE FACTOR ON THE CENTRAL MERIDIAN OF 1.000224 (EXACT) THE LDP BASIS OF BEARINGS IS GEODETIC NORTH.
- FIELD VERIFICATION OF MONUMENTS COMPLETED WITHIN 1 YEAR OF SIGNATURE DATE.

## NOTES:

- HUNGENBERG UH 1 TO BE AT 970' FSL & 283' FEL.
- BOTTOM HOLE AT 480' FSL & 470' FWL, SEC. 28.
- HUNGENBERG UH 2 TO BE AT 985' FSL & 283' FEL.
- BOTTOM HOLE AT 680' FSL & 470' FWL, SEC. 28.
- HUNGENBERG UH 3 TO BE AT 1000' FSL & 283' FEL.
- BOTTOM HOLE AT 880' FSL & 470' FWL, SEC. 28.
- HUNGENBERG UH 4 TO BE AT 1015' FSL & 283' FEL.
- BOTTOM HOLE AT 1080' FSL & 470' FWL, SEC. 28.
- HUNGENBERG UH 5 TO BE AT 1030' FSL & 283' FEL.
- BOTTOM HOLE AT 1280' FSL & 470' FWL, SEC. 28.
- HUNGENBERG UH 6 TO BE AT 1045' FSL & 283' FEL.
- BOTTOM HOLE AT 1480' FSL & 470' FWL, SEC. 28.
- HUNGENBERG UH 7 TO BE AT 1060' FSL & 282' FEL.
- BOTTOM HOLE AT 1785' FSL & 470' FSL, SEC. 28.
- HUNGENBERG UH 8 TO BE AT 1075' FSL & 282' FEL.
- BOTTOM HOLE AT 1975' FSL & 470' FSL, SEC. 28.
- HUNGENBERG UH 9 TO BE AT 1090' FSL & 282' FEL.
- BOTTOM HOLE AT 2160' FSL & 470' FWL, SEC. 28.

EX. SWANSON 44-27 IS AT 745' FNL & 584' FEL.



7535 Hilltop Circle  
Denver, CO 80221  
(303) 928-7128  
www.ascentgeomatics.com

FIELD DATE:  
07-02-18

DRAWING DATE:  
07-05-18

BY:  
MJH

CHECKED:  
MMP

SITE NAME:  
HUNGENBERG PAD

SURFACE LOCATION:  
SE 1/4 SE 1/4 SEC. 27 T6N, R65W, 6TH P.M.  
WELD COUNTY, COLORADO

PREPARED FOR:

